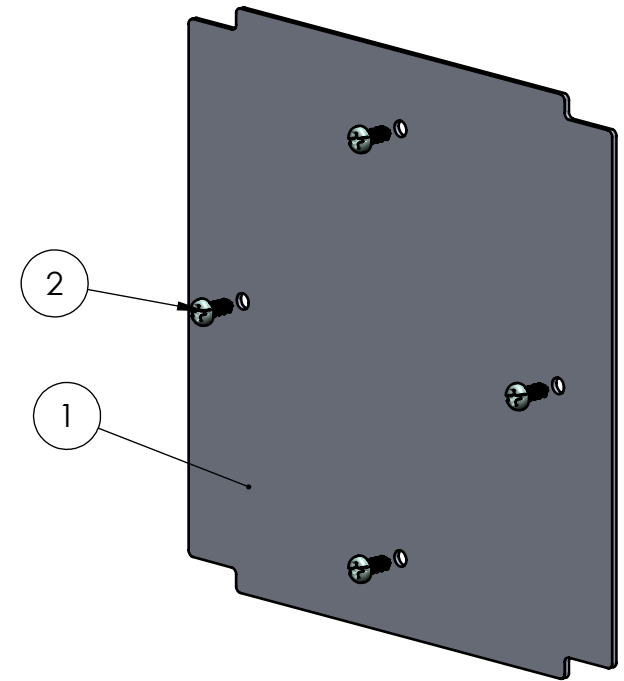
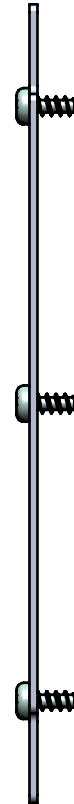
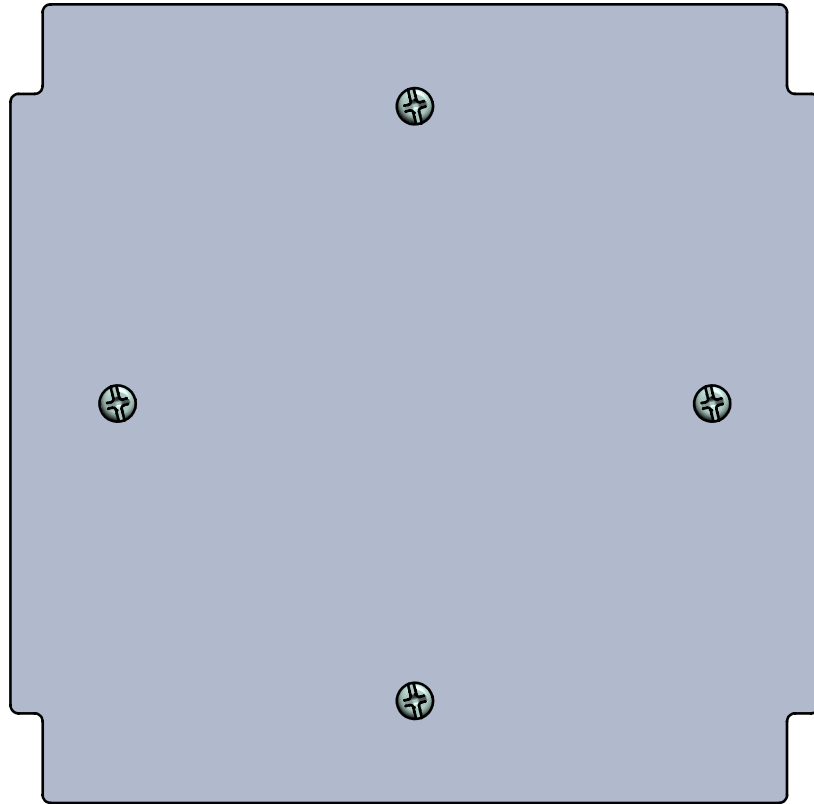




BOM Table					
ITEM NO.	PART NUMBER	Rev.	Description	Material	QTY.
1	SK-19P	1	MOUNTING PANEL	AL 5052-H32	1
2	SCREWS-022	-.01	M3.85x1.8 SPAX X 9mm LG, PAN HEAD, PHILLIPS	QSt36-3	4



SCALE 1 : 2

UNLESS OTHERWISE SPECIFIED: DIMENSIONS ARE IN: INCHES[mm] TOLERANCES: ANGULAR: ±2° TWO PLACE DECIMAL: ±.010 THREE PLACE DECIMAL: ±.005 PRINTED GRAPHICS: ±.010	PART NO. SK-19K		 <small>1305 CHESTER IND. PARKWAY AVON, OHIO 44011-1083 U.S.A. PH#: 1-800-248-1233, 440-934-0444 FAX#: 440-934-0088</small>
	MATERIAL		
PROPRIETARY AND CONFIDENTIAL THE INFORMATION CONTAINED IN THIS DRAWING IS THE SOLE PROPERTY OF POLYCASE. ANY REPRODUCTION IN PART OR AS A WHOLE WITHOUT THE WRITTEN PERMISSION OF POLYCASE IS PROHIBITED. CAD FILE: SK-19K	FLAME RATING		SIZE <b>A</b>
	DRAWN D.M.F. 10/16/2015 CHECKED B.M.B. 10/22/2015		MOUNTING PLATE KIT
REVISIONS			REV <b>1</b>
SHEET 1 OF 1			

REV.	DESCRIPTION	ZONE	BY	APPR'D	DATE
1	REVISED PANEL		C.C.B.	C.C.B.	10/2/2017

5

4

3

2

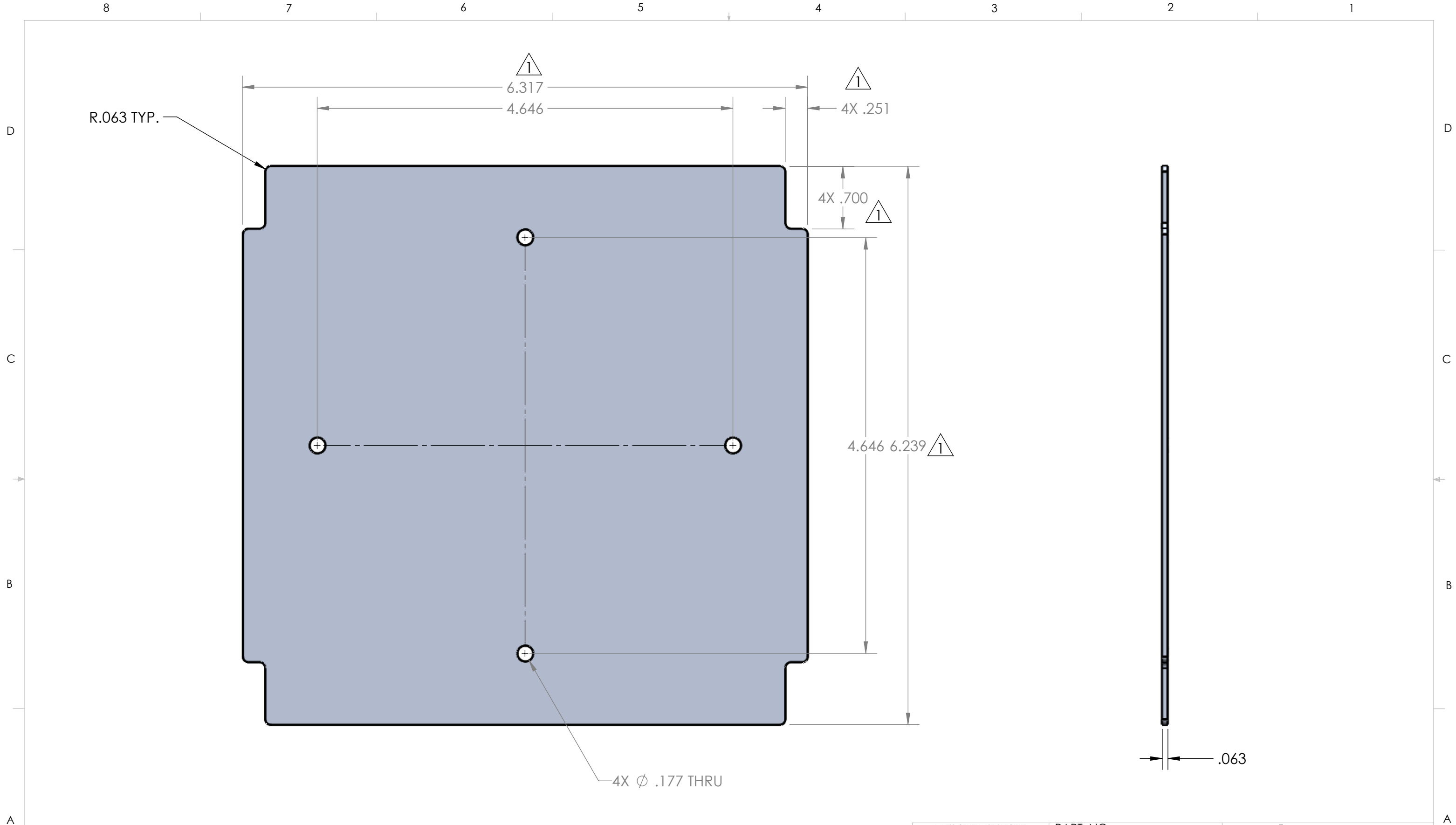
1

D

C

B

A



NOTES:  
1. BREAK ALL EDGES .005 MAX

REV.	DESCRIPTION	ZONE	BY	APPR'D	DATE
1	6.239 WAS 6.750 .700 WAS 4X .956, .251 WAS 4X .507 6.317 WAS 6.829	C3, D4, D6	C.C.B.	C.C.B.	9/12/2017
REVISIONS					

UNLESS OTHERWISE SPECIFIED:  
DIMENSIONS ARE IN: INCHES[mm]  
TOLERANCES: ANGULAR: ±2°  
TWO PLACE DECIMAL: ±.010  
THREE PLACE DECIMAL: ±.005  
PRINTED GRAPHICS: ±.010

PROPRIETARY AND CONFIDENTIAL  
THE INFORMATION CONTAINED IN THIS  
DRAWING IS THE SOLE PROPERTY OF  
POLYCASE. ANY REPRODUCTION IN PART  
OR AS A WHOLE WITHOUT THE WRITTEN  
PERMISSION OF POLYCASE IS PROHIBITED.  
CAD FILE: SK-19P

PART NO. SK-19P		
MATERIAL AL 5052-H32		
FLAME RATING	SIZE <b>B</b>	REV <b>1</b>
DRAWN D.M.F.	NAME B.M.B.	DATE 9/11/2015
CHECKED		10/22/2015

**polycase**  
1305 CHESTER IND. PARKWAY AVON, OHIO 44011-1083 U.S.A.  
PH#: 1-800-248-1233, 440-934-0444 FAX#: 440-934-0088

MOUNTING PANEL

SCALE: 1:1

SHEET 1 OF 1