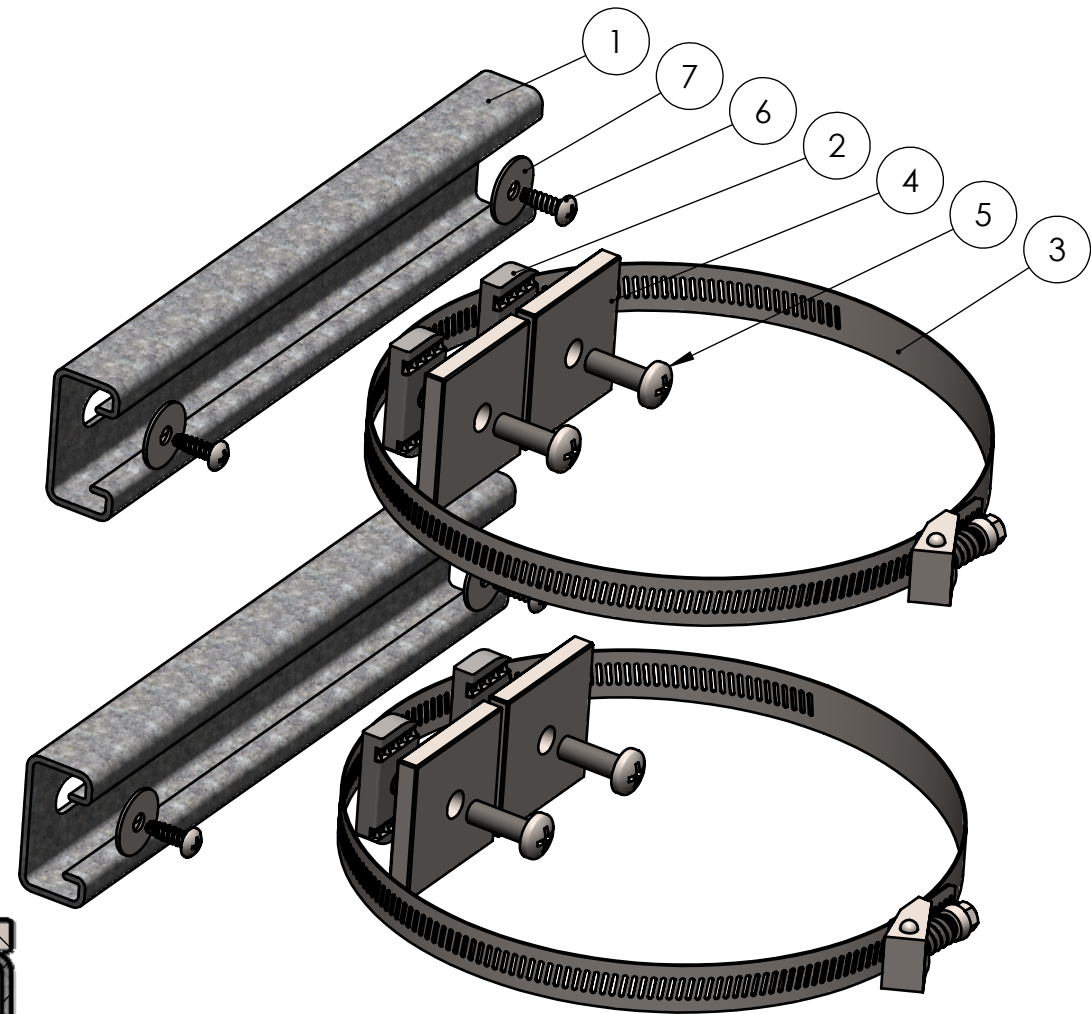
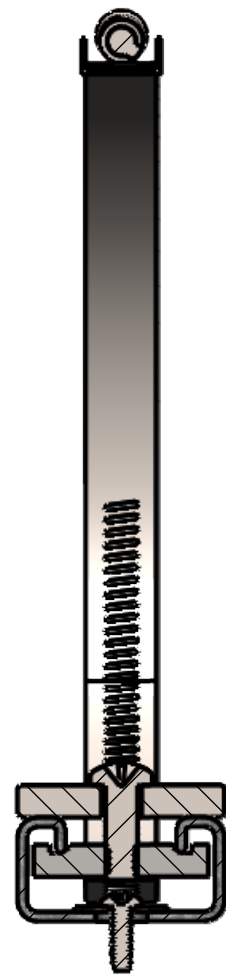
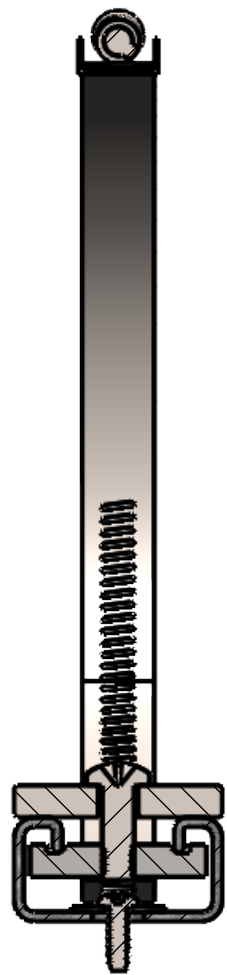
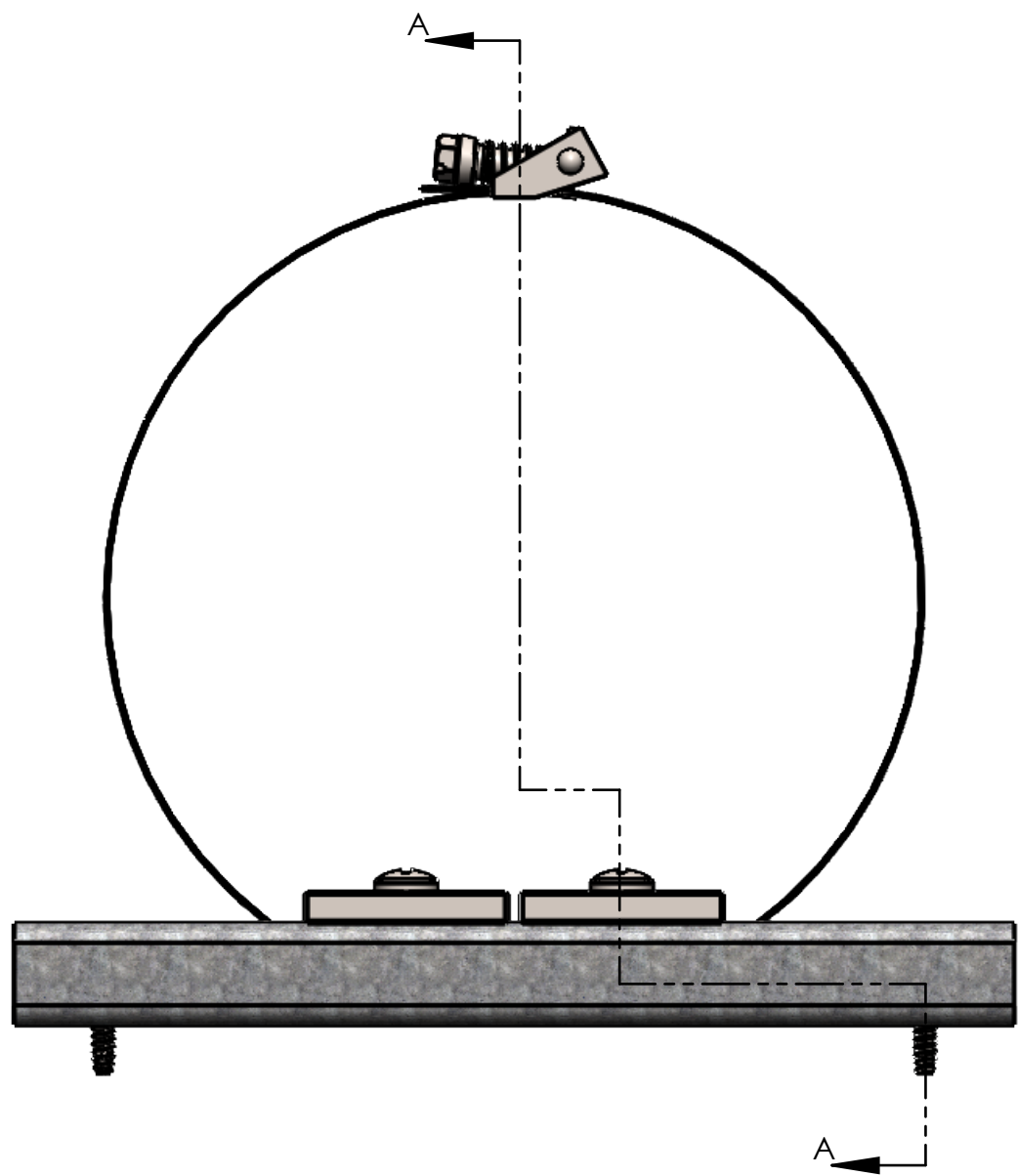


8 7 6 5 4 3 2 1

BOM Table					
ITEM NO.	PART NUMBER	Rev.	Description	Material	QTY.
1	SC-080	-	Strut Channel P4100SLPG	PRE-GALV STEEL	2
2	SN-001	-	Strut Channel NUT 1/4-20	316 SST	4
3	CL-01	-	Hose Clamp, 2" to 12.25" ID, 35 in.-lbs. Max Torque	201 SST, ZINC SCREW	2
4	SW-001	-	Strut Channel Washer 1/4	304 SST	4
5	SCREWS-031		CR PHMS 0.25-20x0.75	SST	4
6	SCREWS-044	-	#8-16X1/2	SST	4
7	W-002		WASHER #10 X .734 X .04	SST	4

D
C
B
A

D
C
B
A



SECTION A-A

UNLESS OTHERWISE SPECIFIED:
 DIMENSIONS ARE IN: INCHES [mm]
 TOLERANCES: ANGULAR: ±2°
 TWO PLACE DECIMAL: ±.010
 THREE PLACE DECIMAL: ±.005
 PRINTED GRAPHICS: ±.010
 PROPRIETARY AND CONFIDENTIAL
 THE INFORMATION CONTAINED IN THIS
 DRAWING IS THE SOLE PROPERTY OF
 POLYCASE. ANY REPRODUCTION IN PART
 OR AS A WHOLE WITHOUT THE WRITTEN
 PERMISSION OF POLYCASE IS PROHIBITED.
 CAD FILE: PK-084

PART NO. PK-084		MATERIAL	
FLAME RATING		SIZE B	POLE MOUNT KIT
DRAWN	R.W.H.	DATE	10/19/2017
CHECKED	C.C.B.	DATE	10/20/2017

polycase
 1305 CHESTER IND. PARKWAY AVON, OHIO 44011-1083 U.S.A.
 PH#: 1-800-248-1233, 440-934-0444 FAX#: 440-934-0088

SCALE: 1:1.5

SHEET 1 OF 1

REV.	DESCRIPTION	ZONE	BY	APPR'D	DATE
	REVISIONS				

8 7 6 5 4 3 2 1