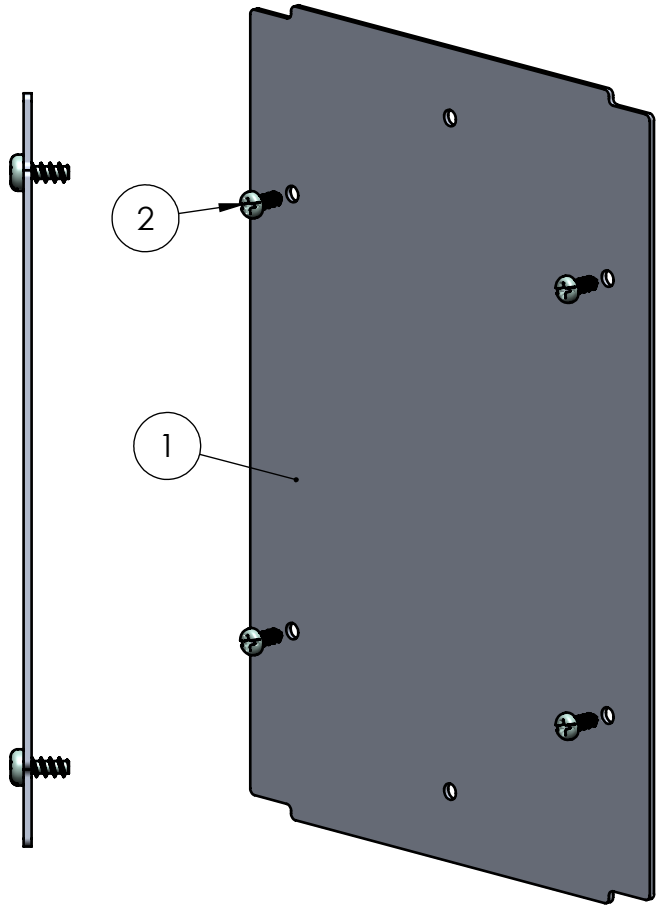
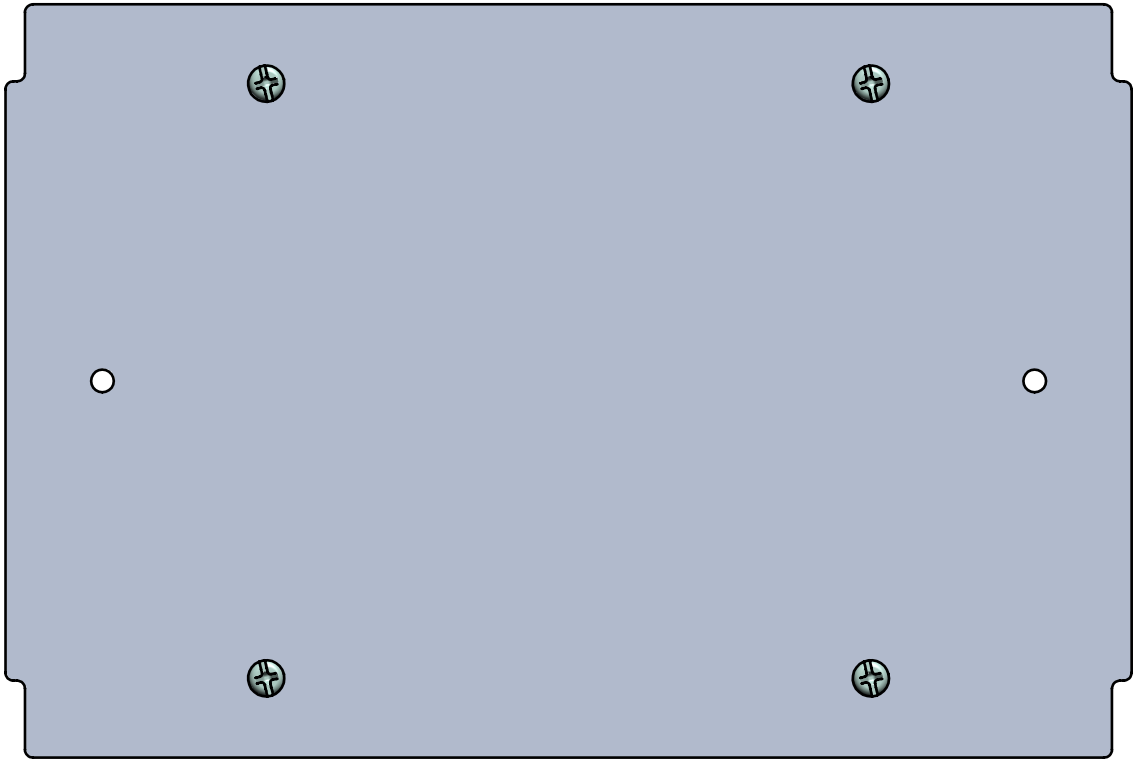



BOM Table					
ITEM NO.	PART NUMBER	Rev.	Description	Material	QTY.
1	SK-20P	1	MOUNTING PANEL	AL 5052-H32	1
2	SCREWS-022	-.01	M3.85x1.8 SPAX X 9mm LG, PAN HEAD, PHILLIPS	QSt36-3	4



SCALE 1 : 2

<div>UNLESS OTHERWISE SPECIFIED: DIMENSIONS ARE IN: INCHES[mm] TOLERANCES: ANGULAR: ±2° TWO PLACE DECIMAL: ±.010 THREE PLACE DECIMAL: ±.005 PRINTED GRAPHICS: ±.010</div> <div>PROPRIETARY AND CONFIDENTIAL THE INFORMATION CONTAINED IN THIS DRAWING IS THE SOLE PROPERTY OF POLYCASE. ANY REPRODUCTION IN PART OR AS A WHOLE WITHOUT THE WRITTEN PERMISSION OF POLYCASE IS PROHIBITED.</div> <div>CAD FILE: SK-20K</div>						<div>PART NO. SK-20K</div>		<div><div><div>poly</div><div>case</div></div><div>1305 CHESTER IND. PARKWAY AVON, OHIO 44011-1083 U.S.A. PH#: 1-800-248-1233, 440-934-0444 FAX#: 440-934-0088</div></div>		<div>MOUNTING PLATE KIT</div>		<div>REV 1</div>		
						<div>MATERIAL</div>								
<div>FLAME RATING</div>						<div>SIZE A</div>		<div>SCALE: 1:1.5</div>		<div></div>		<div>SHEET 1 OF 1</div>		
<div>1</div>						<div>NAME</div>		<div>DATE</div>						
<div>REV.</div>						<div>DRAWN</div>		<div>D.M.F.</div>		<div>10/16/2015</div>				
<div>REVISIONS</div>						<div>CHECKED</div>		<div>B.M.B.</div>		<div>10/22/2015</div>				
<div>REVISED PANEL</div>			<div>C.C.B.</div>	<div>C.C.B.</div>	<div>10/2/2017</div>									
<div>DESCRIPTION</div>			<div>ZONE</div>	<div>BY</div>	<div>APPR'D</div>	<div>DATE</div>								

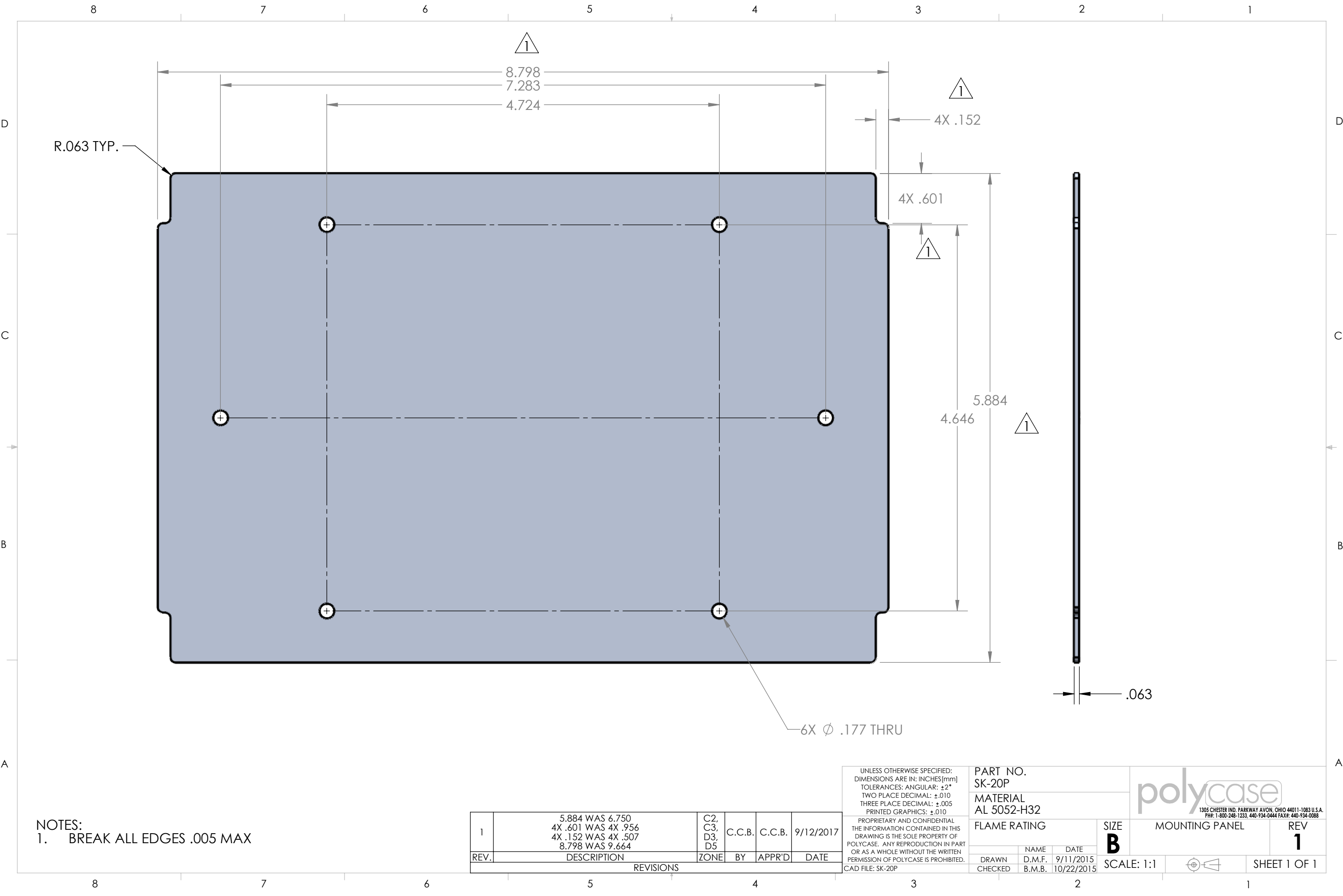
5

4

3

2

1



NOTES:
1. BREAK ALL EDGES .005 MAX

REV.	DESCRIPTION	ZONE	BY	APPR'D	DATE
1	5.884 WAS 6.750 4X .601 WAS 4X .956 4X .152 WAS 4X .507 8.798 WAS 9.664	C2, C3, D3, D5	C.C.B.	C.C.B.	9/12/2017
REVISIONS					

UNLESS OTHERWISE SPECIFIED:
DIMENSIONS ARE IN: INCHES [mm]
TOLERANCES: ANGULAR: ±2°
TWO PLACE DECIMAL: ±.010
THREE PLACE DECIMAL: ±.005
PRINTED GRAPHICS: ±.010

PROPRIETARY AND CONFIDENTIAL
THE INFORMATION CONTAINED IN THIS
DRAWING IS THE SOLE PROPERTY OF
POLYCASE. ANY REPRODUCTION IN PART
OR AS A WHOLE WITHOUT THE WRITTEN
PERMISSION OF POLYCASE IS PROHIBITED.
CAD FILE: SK-20P

PART NO. SK-20P		
MATERIAL AL 5052-H32		
FLAME RATING		
DRAWN	NAME	DATE
CHECKED	B.M.B.	10/22/2015

1305 CHESTER IND. PARKWAY AVON, OHIO 44011-1083 U.S.A.
PH#: 1-800-248-1233, 440-934-0444 FAX#: 440-934-0088

MOUNTING PANEL		REV 1
SCALE: 1:1		SHEET 1 OF 1