

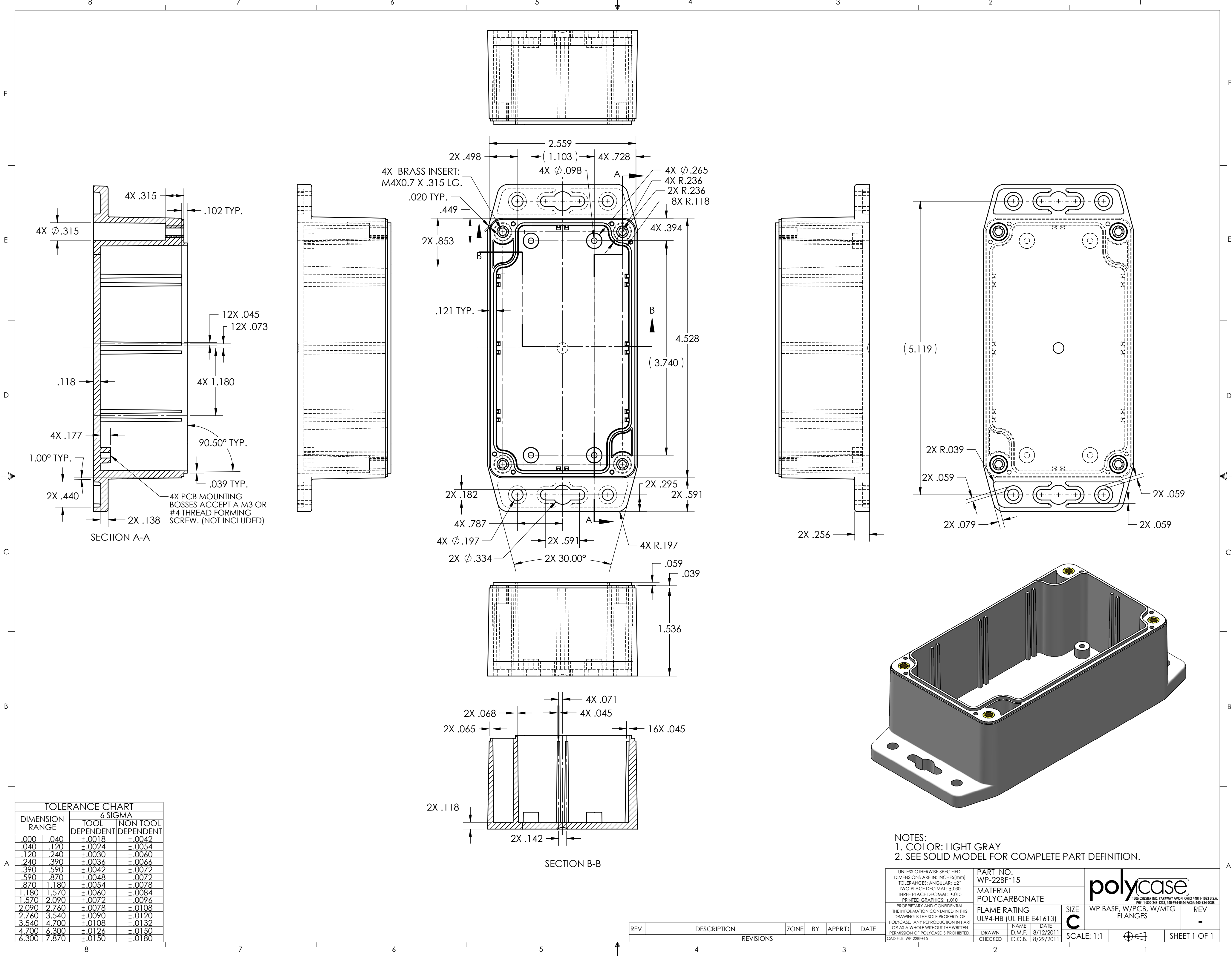
ITEM NO.	PART NUMBER	Rev.	DESCRIPTION	Material	Color	Flame Rating	QTY.
1	WP-22BF*15	-	WP BASE, W/PCB, W/MTG FLANGES	POLYCARBONATE	LIGHT GRAY	UL94-HB (UL FILE E41613)	1
2	WC-21C*08	-	WC COVER, W/GASKET	POLYCARBONATE	CLEAR	UL94-HB (UL FILE E41613)	1
3	SCREWS-SSM4-20-4	-	ASSEMBLY SCREWS, 4 PACK				1
3.1	SCREWS-SSM4-20	-	M4X0.7 X 20mm OAL, PHILLIPS DRIVE MACHINE SCREW	STAINLESS STEEL			4

SECTION A-A

- NOTES:
- SERVICE TEMPERATURE RANGE: -40°C TO 120°C
 - DESIGNED TO NEMA 1, 2, 4, 4X, 12, 13.
 - UL LISTED TO UL508-4X SPECIFICATIONS (UL FILE #E194432).


UNLESS OTHERWISE SPECIFIED: DIMENSIONS ARE IN: INCHES[mm] TOLERANCES: ANGULAR: ±2° TWO PLACE DECIMAL: ±.030 THREE PLACE DECIMAL: ±.015 PRINTED GRAPHICS: ±.010		PART NO. WC-22F*1508		<div>polycase</div> <div>1305 CHESTER RD. PARKWAY AVON, OHIO 44011-1083 U.S.A. PH: 1-800-248-1233 440-934-0444 FAX: 440-934-0088</div>	
PROPRIETARY AND CONFIDENTIAL THE INFORMATION CONTAINED IN THIS DRAWING IS THE SOLE PROPERTY OF POLYCASE. ANY REPRODUCTION IN PART OR AS A WHOLE WITHOUT THE WRITTEN PERMISSION OF POLYCASE IS PROHIBITED. CAD FILE: WC-22F*1508		MATERIAL			
FLAME RATING UL94-HB		SIZE C		WC UNIT, W/MTG BOSSES, REV W/GASKET, LIGHT GRAY BASE, CLEAR COVER -	
DRAWN CHECKED		NAME D.M.F. C.C.B.		DATE 8/12/2011 8/29/2011	
SCALE: 1:1		SHEET 1 OF 1			

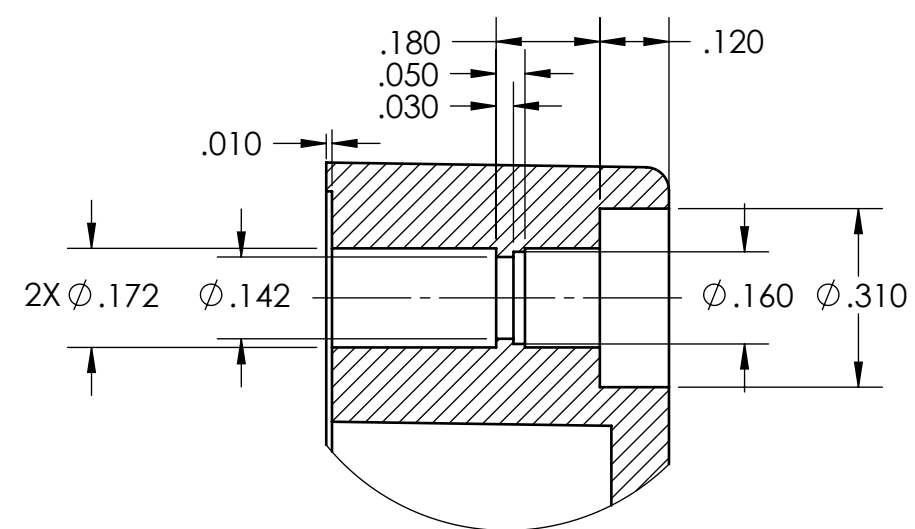
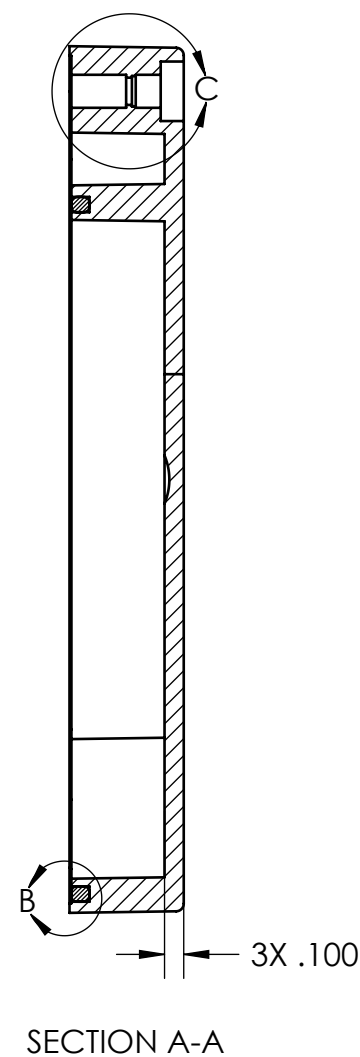
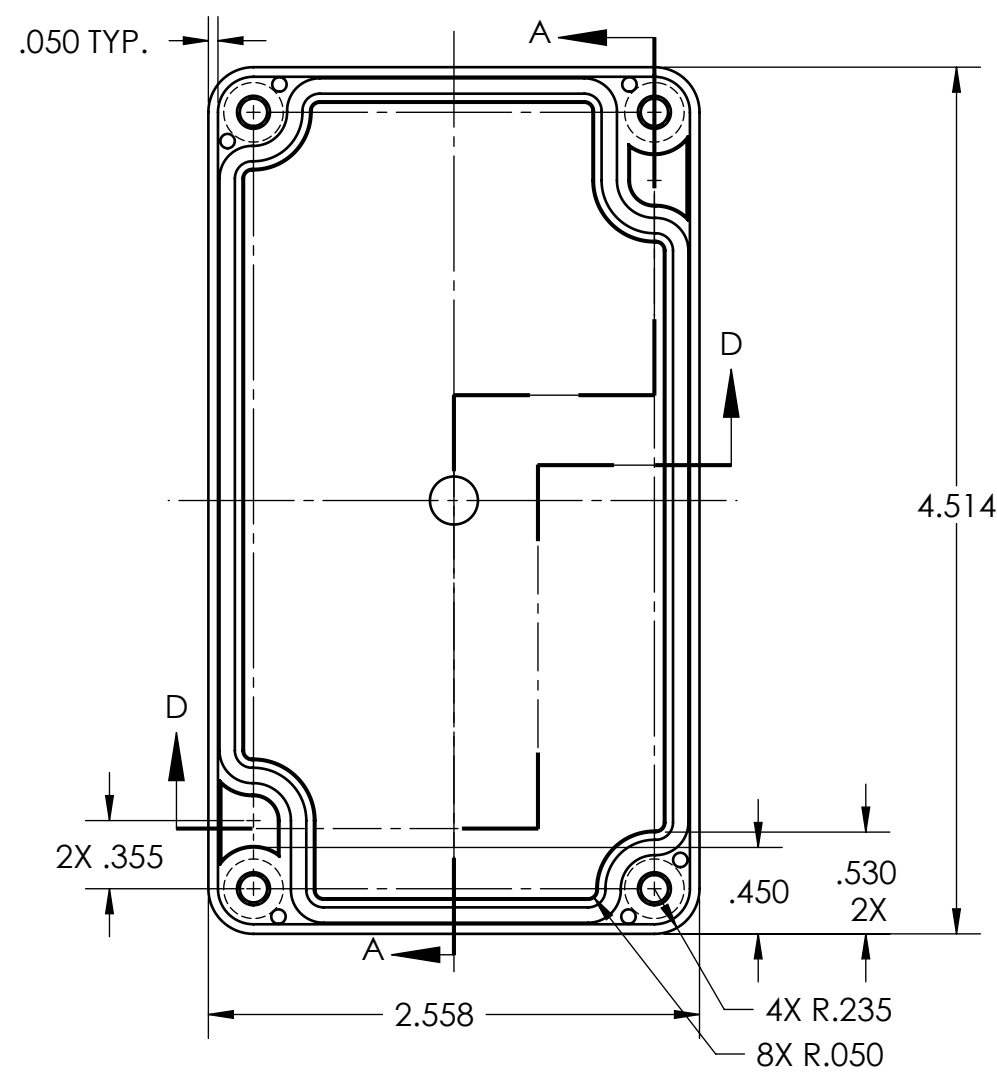
REV.	DESCRIPTION	ZONE	BY	APPR'D	DATE
REVISIONS					



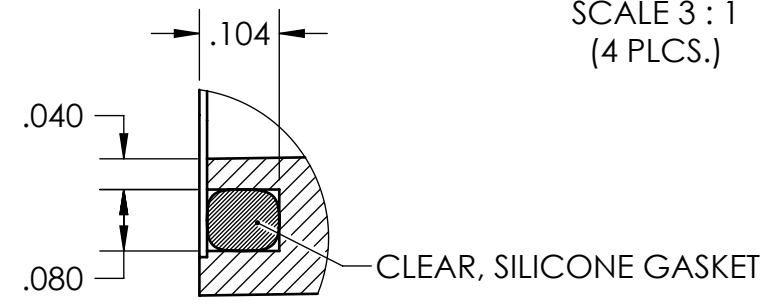
TOLERANCE CHART			
6 SIGMA			
DIMENSION RANGE	TOOL DEPENDENT	NON-TOOL DEPENDENT	
.000 .040	±.0018	±.0042	
.040 .120	±.0024	±.0054	
.120 .240	±.0030	±.0060	
.240 .390	±.0036	±.0066	
.390 .590	±.0042	±.0072	
.590 .870	±.0048	±.0072	
.870 1.180	±.0054	±.0078	
1.180 1.570	±.0060	±.0084	
1.570 2.090	±.0072	±.0096	
2.090 2.760	±.0078	±.0108	
2.760 3.540	±.0090	±.0120	
3.540 4.700	±.0108	±.0132	
4.700 6.300	±.0126	±.0150	
6.300 7.870	±.0150	±.0180	

NOTES:
1. COLOR: LIGHT GRAY
2. SEE SOLID MODEL FOR COMPLETE PART DEFINITION.

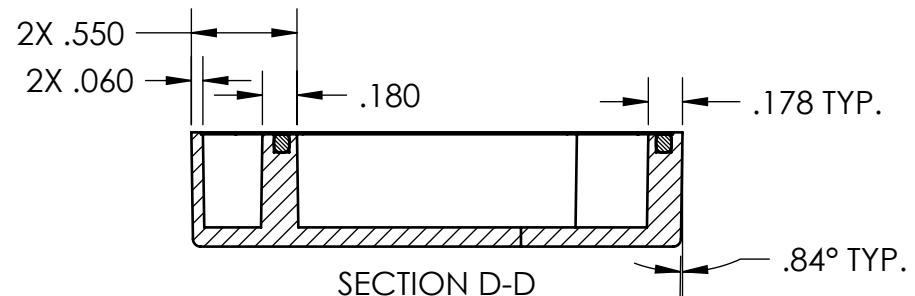
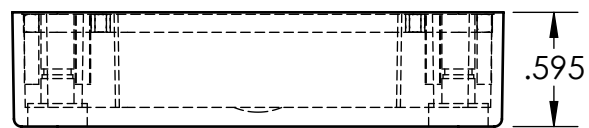
UNLESS OTHERWISE SPECIFIED: DIMENSIONS ARE IN: INCHES[mm] TOLERANCES: ANGULAR: ±2° TWO PLACE DECIMAL: ±.030 THREE PLACE DECIMAL: ±.015 PRINTED GRAPHICS: ±.010	PART NO. WP-22BF*15	 <small>1305 CHESTER RD. PARKWAY AVON, OHIO 44011-1083 U.S.A. PH: 1-800-248-1233 440-934-0444 FAX: 440-934-0088</small>		
MATERIAL POLYCARBONATE	FLAME RATING UL94-HB (UL FILE E41613)			
PROPRIETARY AND CONFIDENTIAL THE INFORMATION CONTAINED IN THIS DRAWING IS THE SOLE PROPERTY OF POLYCASE. ANY REPRODUCTION IN PART OR AS A WHOLE WITHOUT THE WRITTEN PERMISSION OF POLYCASE IS PROHIBITED.	DRAWN CHECKED	NAME DATE D.M.F. 8/12/2011 C.C.B. 8/29/2011		
CAD FILE: WP-22BF*15	SIZE C	SCALE: 1:1		
REV.	DESCRIPTION	ZONE BY APPR'D DATE		
REVISIONS				
WP BASE, W/PCB, W/MTG FLANGES		REV -		
SHEET 1 OF 1				



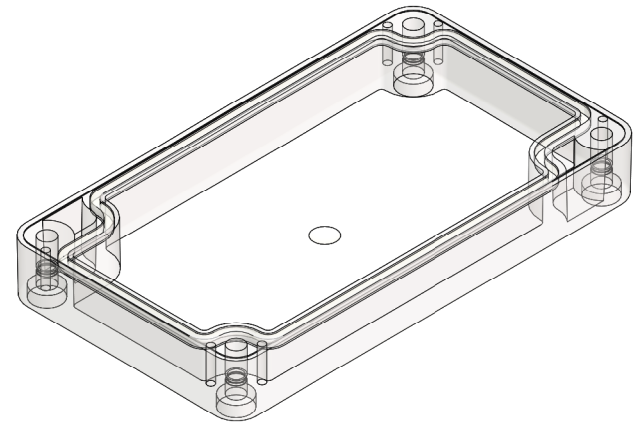
DETAIL C
SCALE 3 : 1
(4 PLCS.)



DETAIL B
SCALE 4 : 1

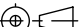


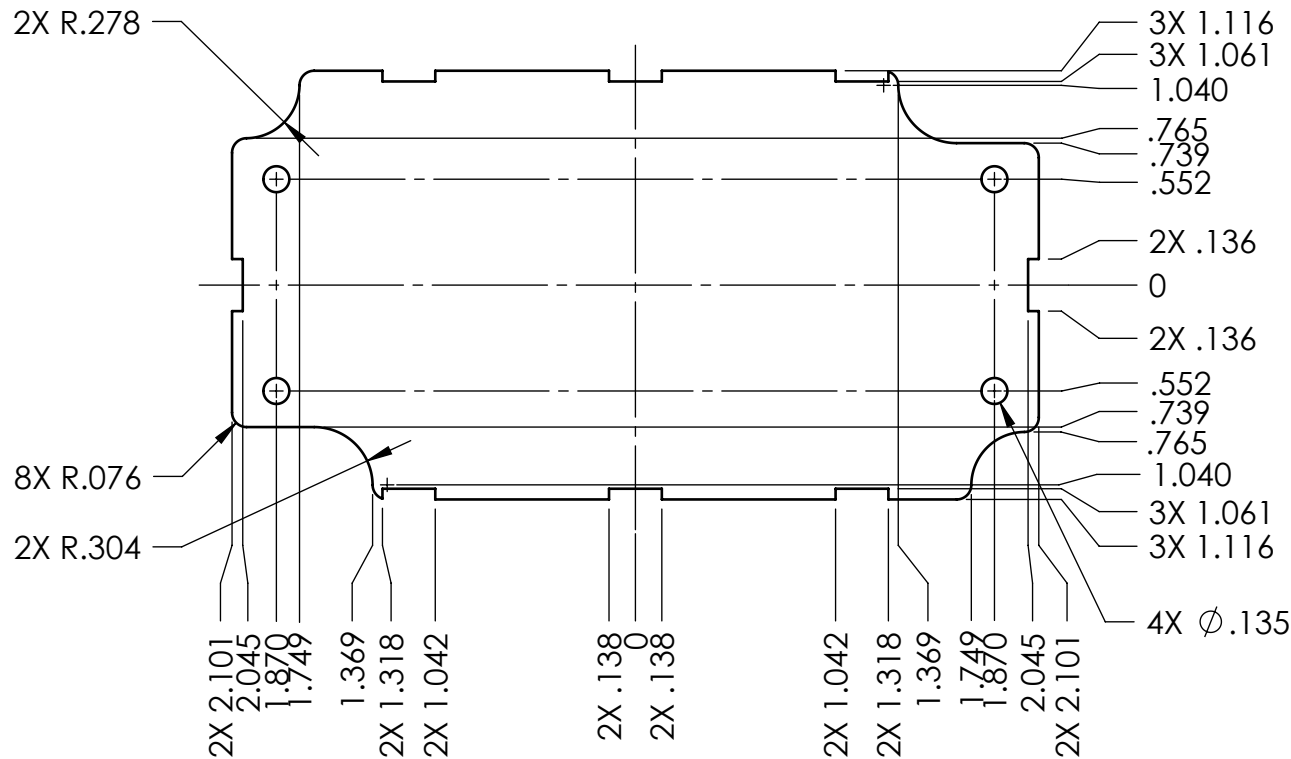
SECTION D-D



NOTES:
1. COLOR: CLEAR


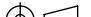
REV.	DESCRIPTION	ZONE	BY	APPR'D	DATE
-.01	UPDATED TITLE BLOCK		D.M.F.	D.M.F.	9/2/2011

UNLESS OTHERWISE SPECIFIED: DIMENSIONS ARE IN: INCHES [mm] TOLERANCES: ANGULAR: ±2° TWO PLACE DECIMAL: ±.030 THREE PLACE DECIMAL: ±.015 PRINTED GRAPHICS: ±.010			PART NO. WC-21C*08		<div>polycase</div> <div>1305 CHESTER IND. PARKWAY AVON, OHIO 44011-1083 U.S.A. PH#: 1-800-248-1233, 440-934-0444 FAX#: 440-934-0088</div>				
			MATERIAL POLYCARBONATE						
PROPRIETARY AND CONFIDENTIAL THE INFORMATION CONTAINED IN THIS DRAWING IS THE SOLE PROPERTY OF POLYCASE. ANY REPRODUCTION IN PART OR AS A WHOLE WITHOUT THE WRITTEN PERMISSION OF POLYCASE IS PROHIBITED. CAD FILE: WC-21C+08			FLAME RATING UL94-HB (UL FILE E41613)		SIZE B	WC COVER, W/GASKET		REV -.01	
				NAME	DATE				
			DRAWN	D.M.F.	4/12/2010				
			CHECKED	B.M.B.	6/9/2010	SCALE: 1:1			SHEET 1 OF 1



NOTES:

1. PCB MOUNTING BOSSES ACCEPT A M3 OR #4 THREAD FORMING SCREW.
2. INCLUDES .031 CLEARANCE FROM INTERIOR OF WP-22BF*15.

UNLESS OTHERWISE SPECIFIED: DIMENSIONS ARE IN: INCHES[mm] TOLERANCES: ANGULAR: ±2° TWO PLACE DECIMAL: ±.010 THREE PLACE DECIMAL: ±.005 PRINTED GRAPHICS: ±.010		PART NO. WP-22BF*15-PCB		<div><p>1305 CHESTER IND. PARKWAY AVON, OHIO 44011-1083 U.S.A. PH#: 1-800-248-1233, 440-934-0444 FAX#: 440-934-0088</p></div>			
		MATERIAL					
PROPRIETARY AND CONFIDENTIAL THE INFORMATION CONTAINED IN THIS DRAWING IS THE SOLE PROPERTY OF POLYCASE. ANY REPRODUCTION IN PART OR AS A WHOLE WITHOUT THE WRITTEN PERMISSION OF POLYCASE IS PROHIBITED. CAD FILE: WP-22BF*15-PCB		FLAME RATING		SIZE A	PCB TEMPLATE		REV -
			NAME	DATE			
		DRAWN	D.M.F.	8/12/2011			
		CHECKED	C.C.B.	8/29/2011			
				SCALE: 1:1		SHEET 1 OF 1	

ZONE	REV.	DESCRIPTION	BY	APPR'D	DATE
REVISIONS					

5

4

3

2

1

Enable 3D View