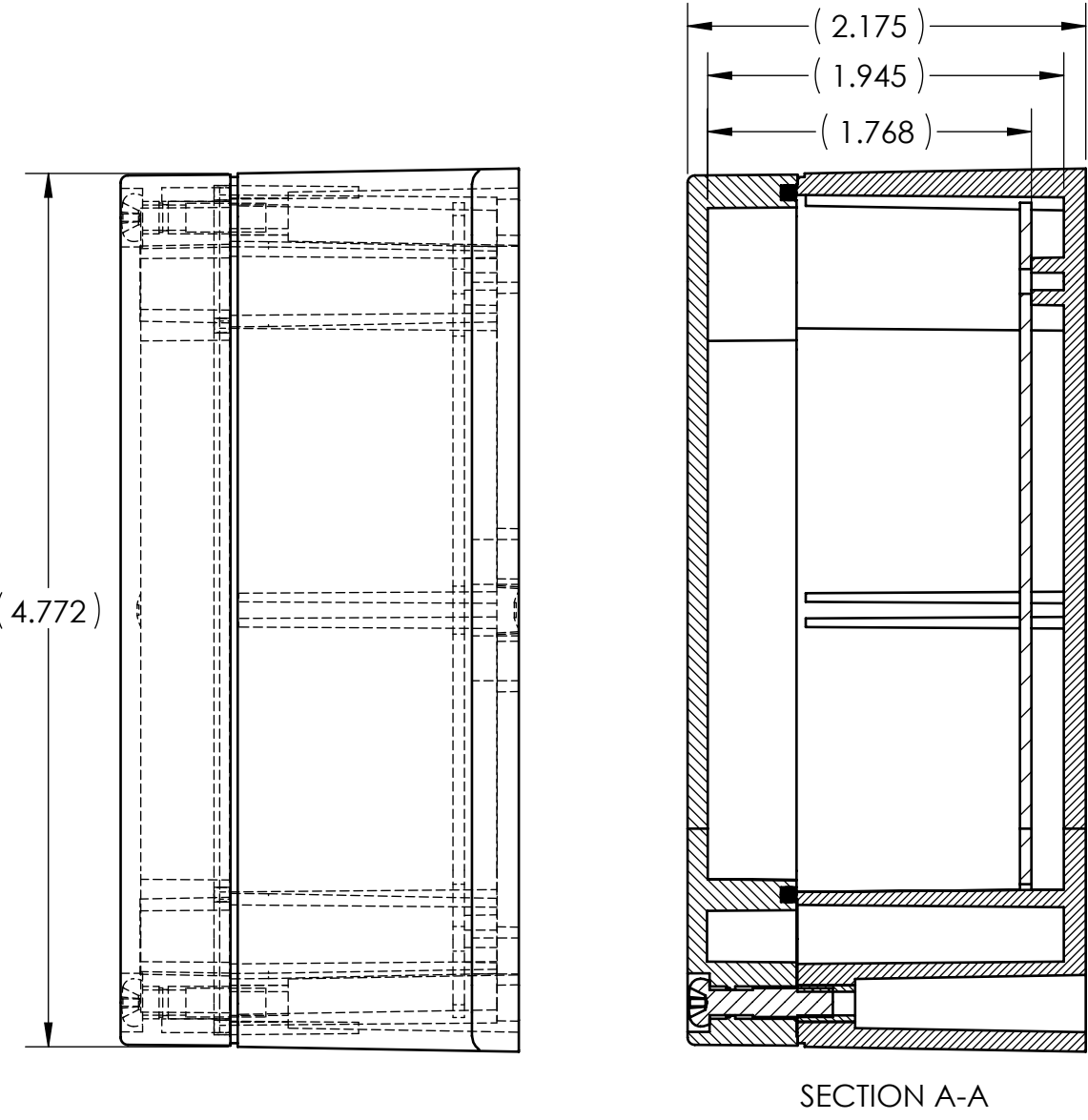
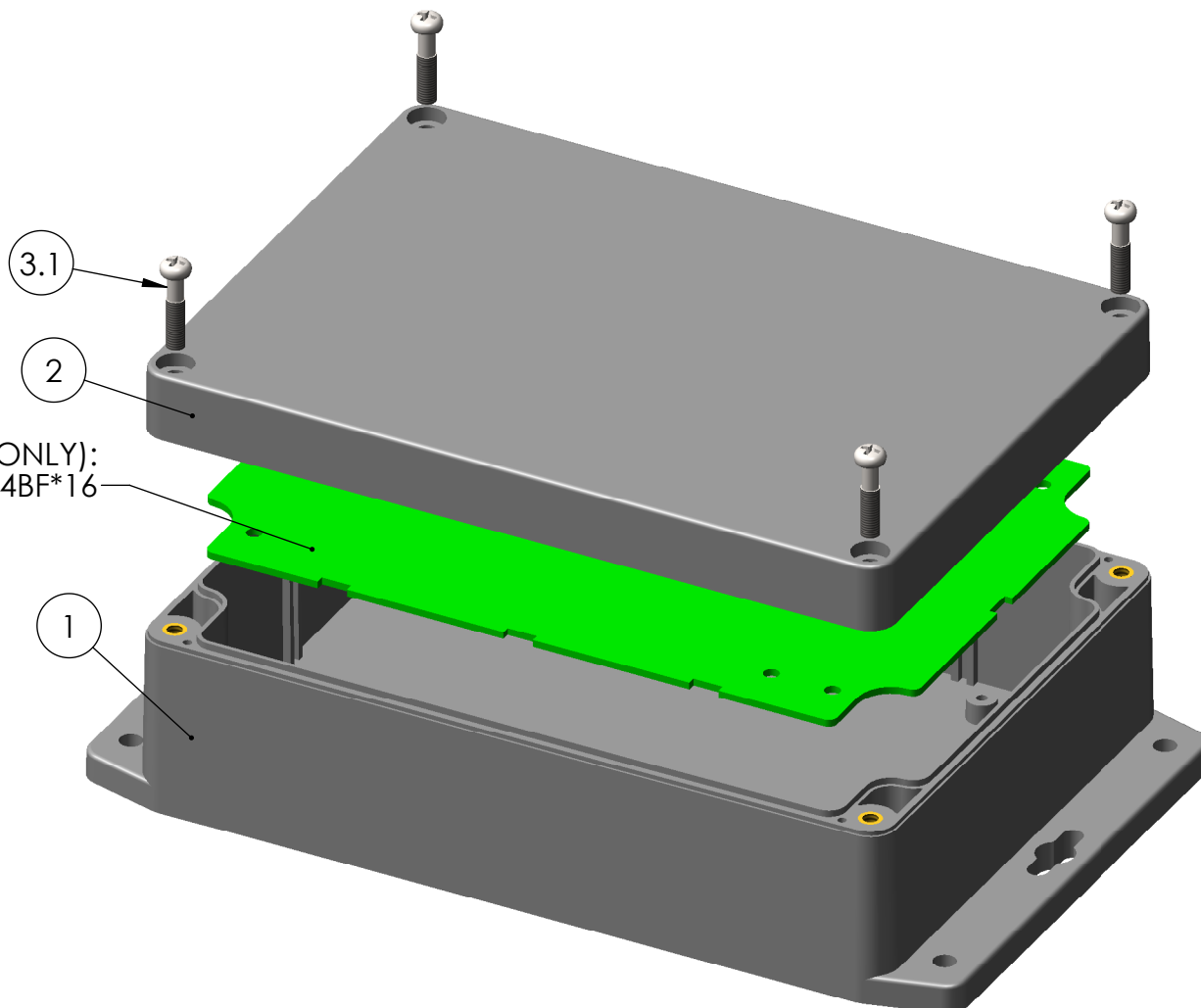


ITEM NO.	PART NUMBER	Rev	DESCRIPTION	Material	Color	Flame Rating	QTY.
1	WA-24BF*16	-	WA BASE, W/PCB BOSSES, W/FLANGES	ABS	DARK GRAY	UL94-HB (UL FILE E56070)	1
2	WA-24C*16	-	WA COVER, W/GASKET	ABS	DARK GRAY	UL94-HB (UL FILE E56070)	1
3	SCREWS-SSM4-20-4	-	ASSEMBLY SCREWS, 4 PACK				1
3.1	SCREWS-SSM4-20	-	M4X0.7 X 20mm OAL, PHILLIPS DRIVE MACHINE SCREW	STAINLESS STEEL			4



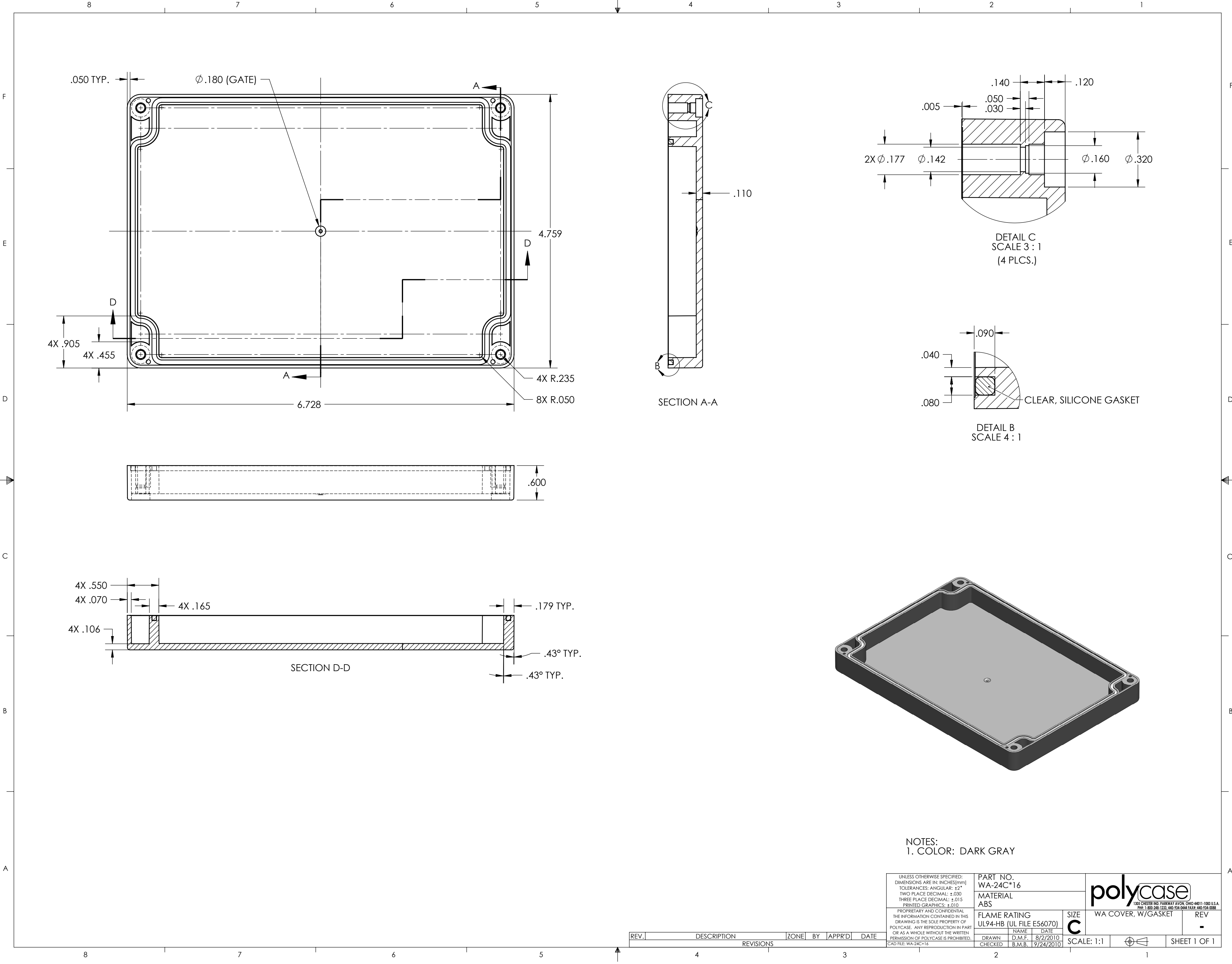
WA-24BF\*16-PCB (REF. ONLY):  
PCB TEMPLATE FOR WA-24BF\*16




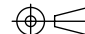
- NOTES:
- 1. SERVICE TEMPERATURE RANGE: -40°C to 80°C
  - 2. DESIGNED TO NEMA 1, 2, 4, 4X, 12, 13
  - 3. MOUNTING FLANGE KITS ARE AVAILABLE FROM POLYCASE.
  - 4. UL LISTED TO UL508-4X SPECIFICATIONS (UL FILE #E194432).

UNLESS OTHERWISE SPECIFIED: DIMENSIONS ARE IN: INCHES[mm] TOLERANCES: ANGULAR: ±2° TWO PLACE DECIMAL: ±.030 THREE PLACE DECIMAL: ±.015 PRINTED GRAPHICS: ±.010		PART NO. WA-24F*16		MATERIAL		FLAME RATING UL94-HB		SIZE C		WA UNIT, W/PCB BOSSES, W/FLANGES		REV -	
PROPRIETARY AND CONFIDENTIAL THE INFORMATION CONTAINED IN THIS DRAWING IS THE SOLE PROPERTY OF POLYCASE. ANY REPRODUCTION IN PART OR AS A WHOLE WITHOUT THE WRITTEN PERMISSION OF POLYCASE IS PROHIBITED. CAD FILE: WA-24F*16		DRAWN CHECKED		NAME D.M.F. C.C.B.		DATE 8/17/2011 8/26/2011		SCALE: 1:1		SHEET 1 OF 1			

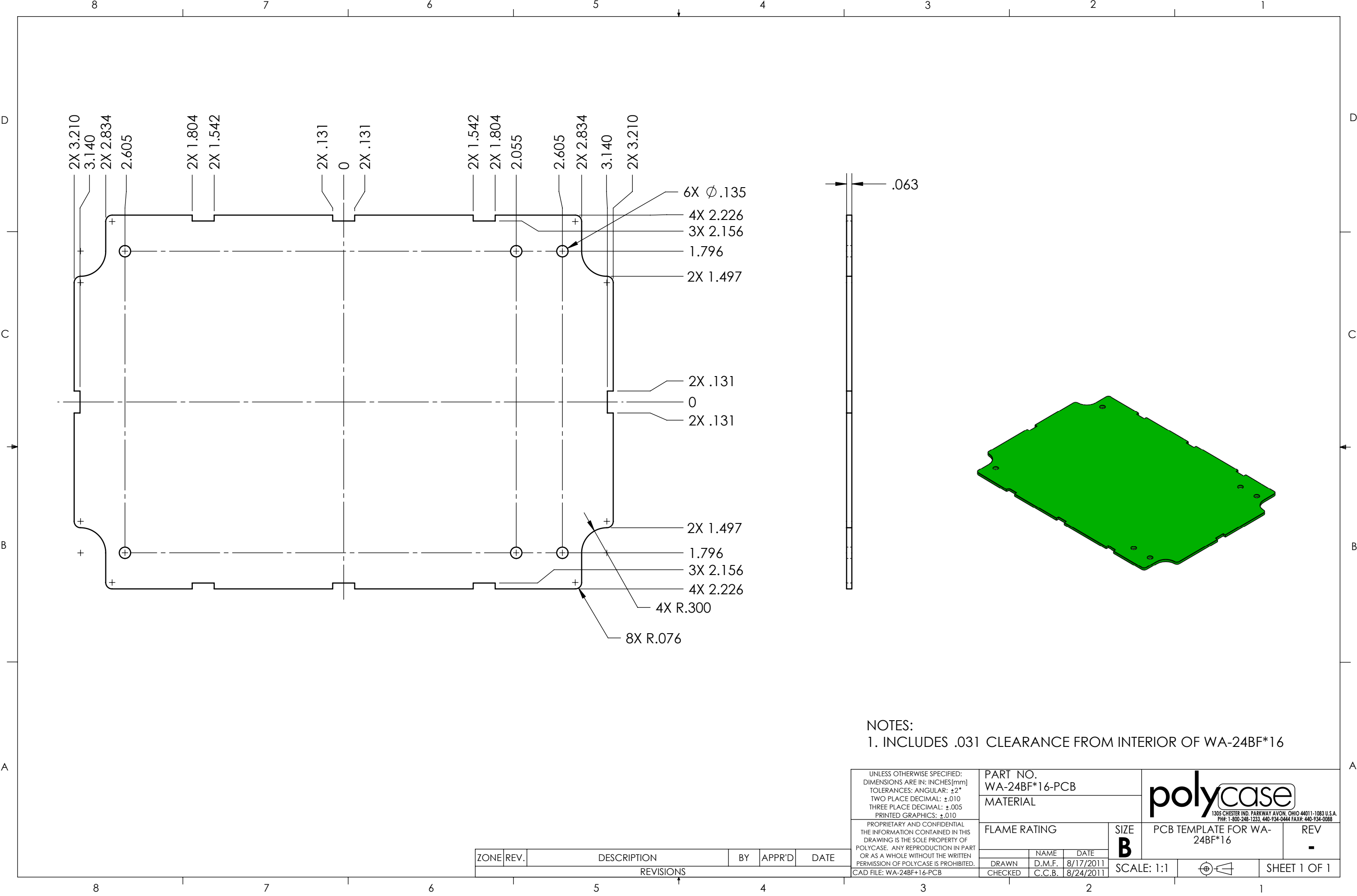





NOTES:  
1. COLOR: DARK GRAY

UNLESS OTHERWISE SPECIFIED: DIMENSIONS ARE IN: INCHES[mm] TOLERANCES: ANGULAR: $\pm 2^\circ$ TWO PLACE DECIMAL: $\pm .030$ THREE PLACE DECIMAL: $\pm .015$ PRINTED GRAPHICS: $\pm .010$		PART NO. WA-24C*16		 <small>1305 CHESTER RD. PARKWAY AVON, OHIO 44011-1083 U.S.A. PH: 1-800-248-1233 440-934-0444 FAX: 440-934-0088</small>			
PROPRIETARY AND CONFIDENTIAL THE INFORMATION CONTAINED IN THIS DRAWING IS THE SOLE PROPERTY OF POLYCASE. ANY REPRODUCTION IN PART OR AS A WHOLE WITHOUT THE WRITTEN PERMISSION OF POLYCASE IS PROHIBITED.		MATERIAL ABS					
FLAME RATING UL94-HB (UL FILE E56070)		SIZE C		WA COVER, W/GASKET		REV -	
DRAWN		NAME		DATE			
CHECKED		D.M.F.		8/2/2010			
CAD FILE: WA-24C*16		B.M.B.		9/24/2010			
SCALE: 1:1				SHEET 1 OF 1			

REV.	DESCRIPTION	ZONE	BY	APPR'D	DATE
REVISIONS					



NOTES:  
1. INCLUDES .031 CLEARANCE FROM INTERIOR OF WA-24BF\*16

UNLESS OTHERWISE SPECIFIED: DIMENSIONS ARE IN: INCHES [mm] TOLERANCES: ANGULAR: ±2° TWO PLACE DECIMAL: ±.010 THREE PLACE DECIMAL: ±.005 PRINTED GRAPHICS: ±.010						PART NO. WA-24BF*16-PCB			<div><div>polycase</div><div>1305 CHESTER IND. PARKWAY AVON, OHIO 44011-1083 U.S.A. PH#: 1-800-248-1233, 440-934-0444 FAX#: 440-934-0088</div></div>			
						MATERIAL						
PROPRIETARY AND CONFIDENTIAL THE INFORMATION CONTAINED IN THIS DRAWING IS THE SOLE PROPERTY OF POLYCASE. ANY REPRODUCTION IN PART OR AS A WHOLE WITHOUT THE WRITTEN PERMISSION OF POLYCASE IS PROHIBITED. CAD FILE: WA-24BF*16-PCB						FLAME RATING			SIZE <b>B</b>	PCB TEMPLATE FOR WA- 24BF*16		REV -
								NAME	DATE			
						DRAWN	D.M.F.	8/17/2011	SCALE: 1:1		SHEET 1 OF 1	
						CHECKED	C.C.B.	8/24/2011				
REVISIONS												
ZONE	REV.	DESCRIPTION				BY	APPR'D	DATE				

Enable 3D View