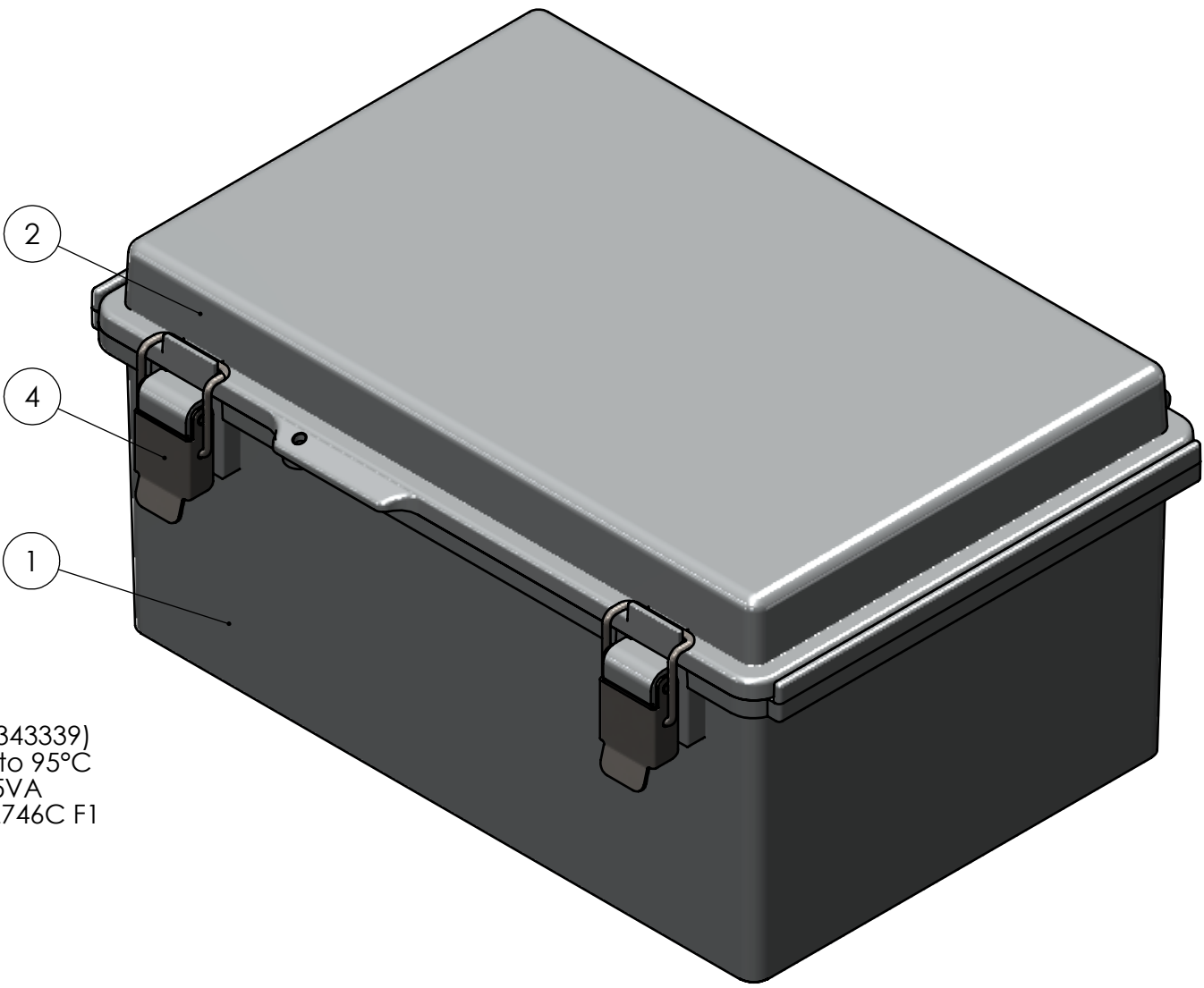
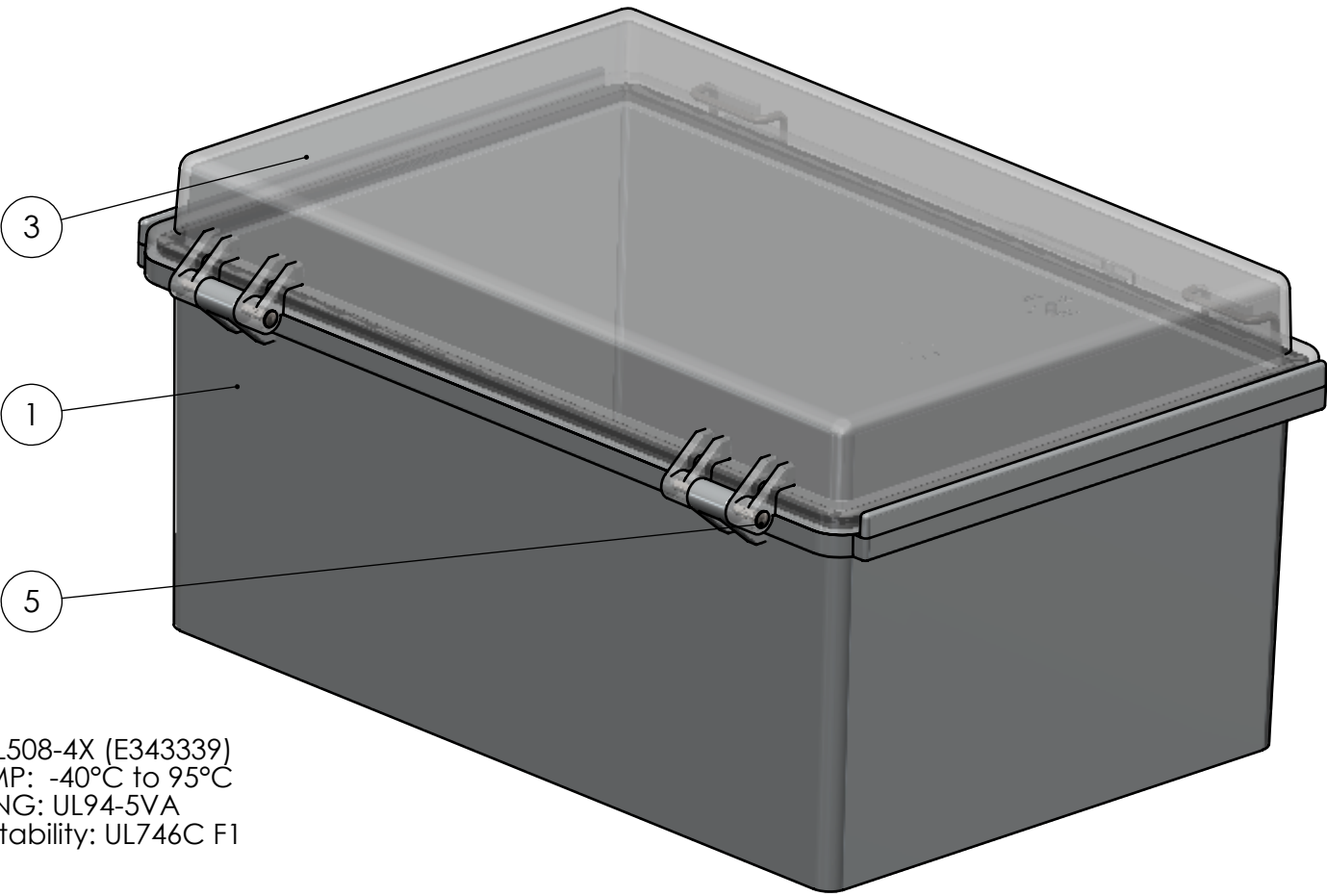


BOM Table							
ITEM NO.	PART NUMBER	Rev.	Description	Material	Color	WQ-57S-02/QTY.	WQ-57S-03/QTY.
1	WQ-57B-02	1	BASE	GFR10/PC	GRAY	1	1
2	WQ-57C-02	-	COVER W/GASKET	PC	GRAY	1	-
3	WQ-57C-03	-	COVER W/GASKET	PC	CLEAR	-	1
4	WQ-57L-01	-	LATCH ASSEMBLY	-	-	2	2
5	WQ-PIN-01	-	HINGE PIN	-	-	2	2



WQ-57S-02
UL LISTED: UL508-4X (E343339)
SERVICE TEMP: -40°C to 95°C
FLAME RATING: UL94-5VA
Outdoor Suitability: UL746C F1



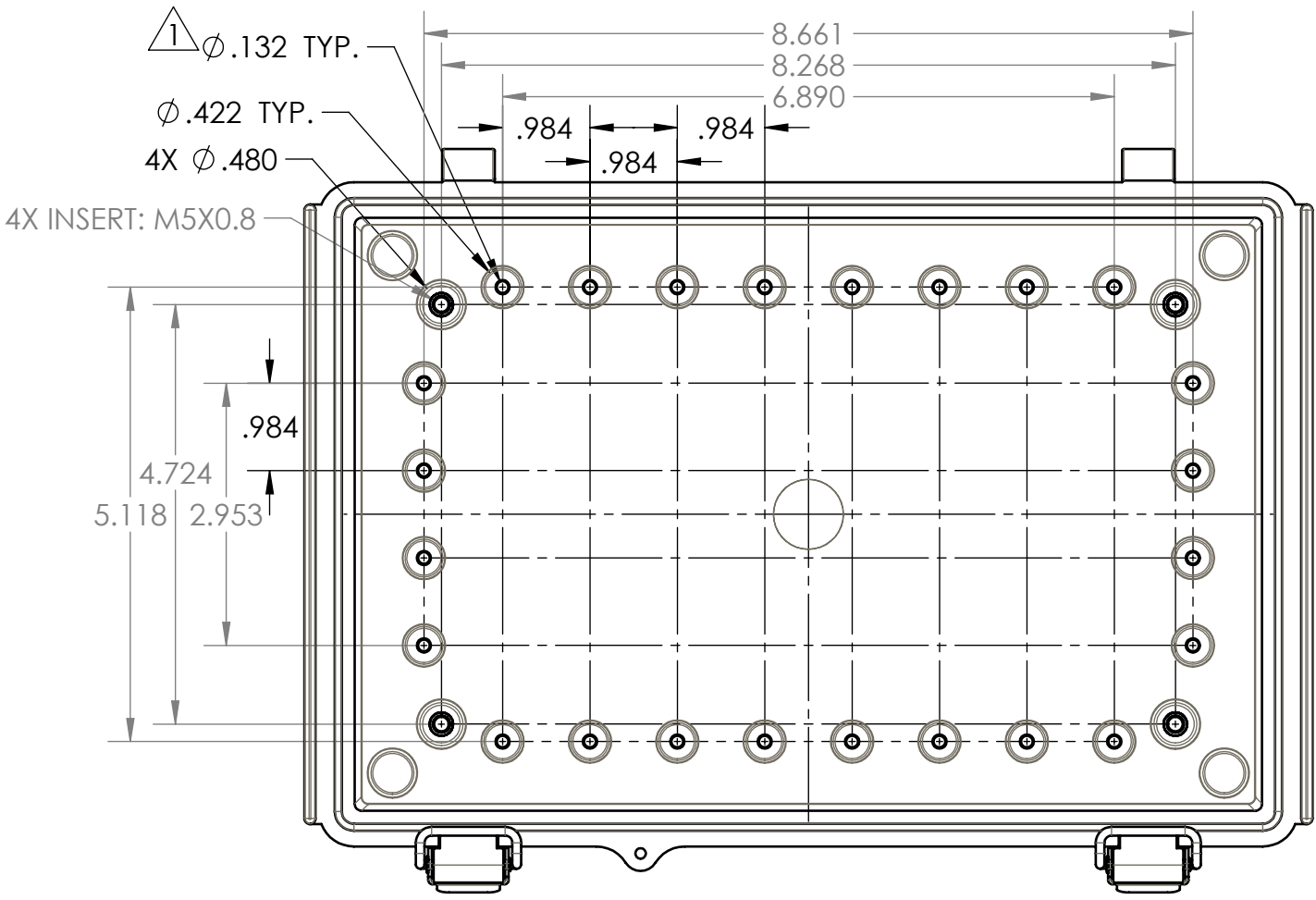
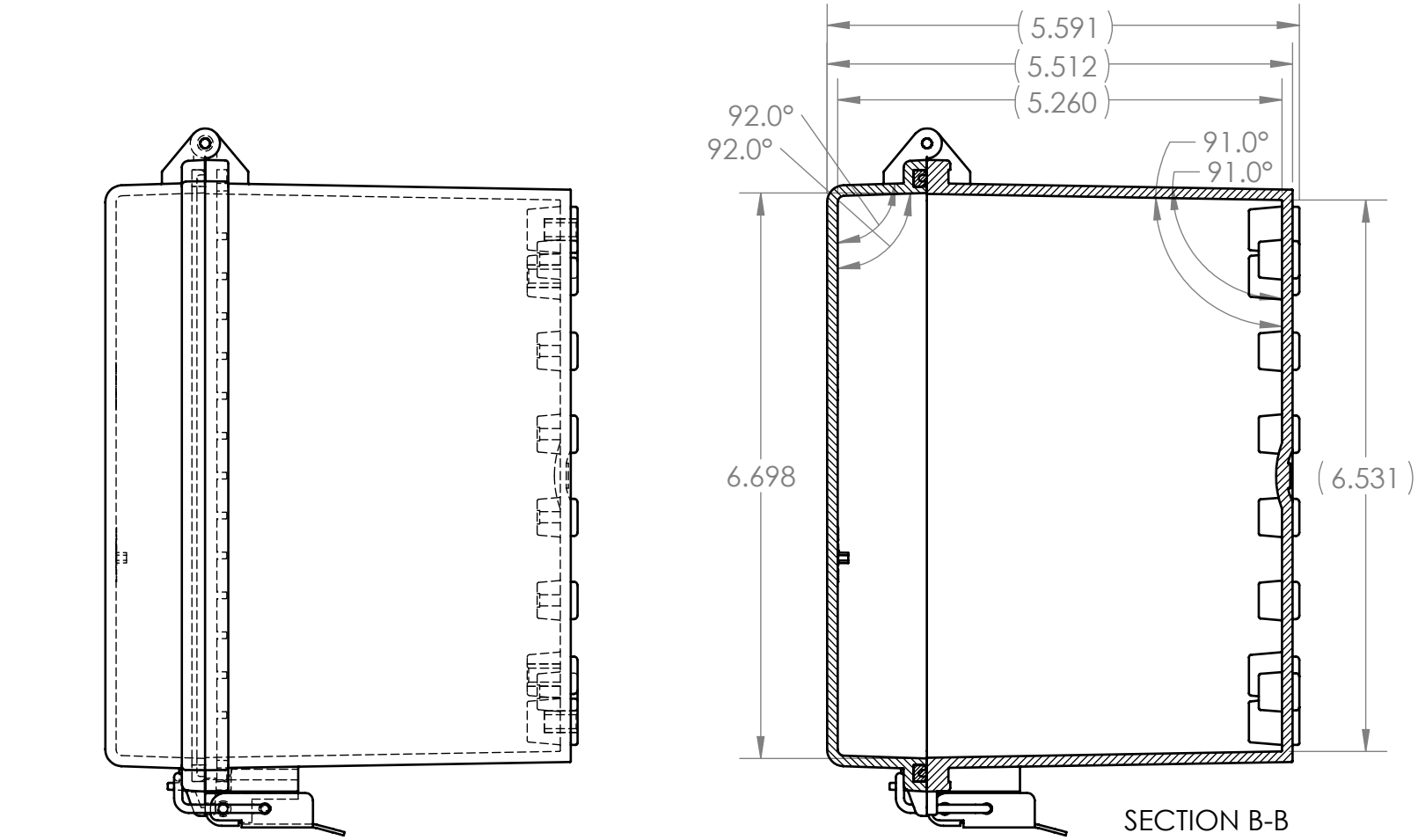
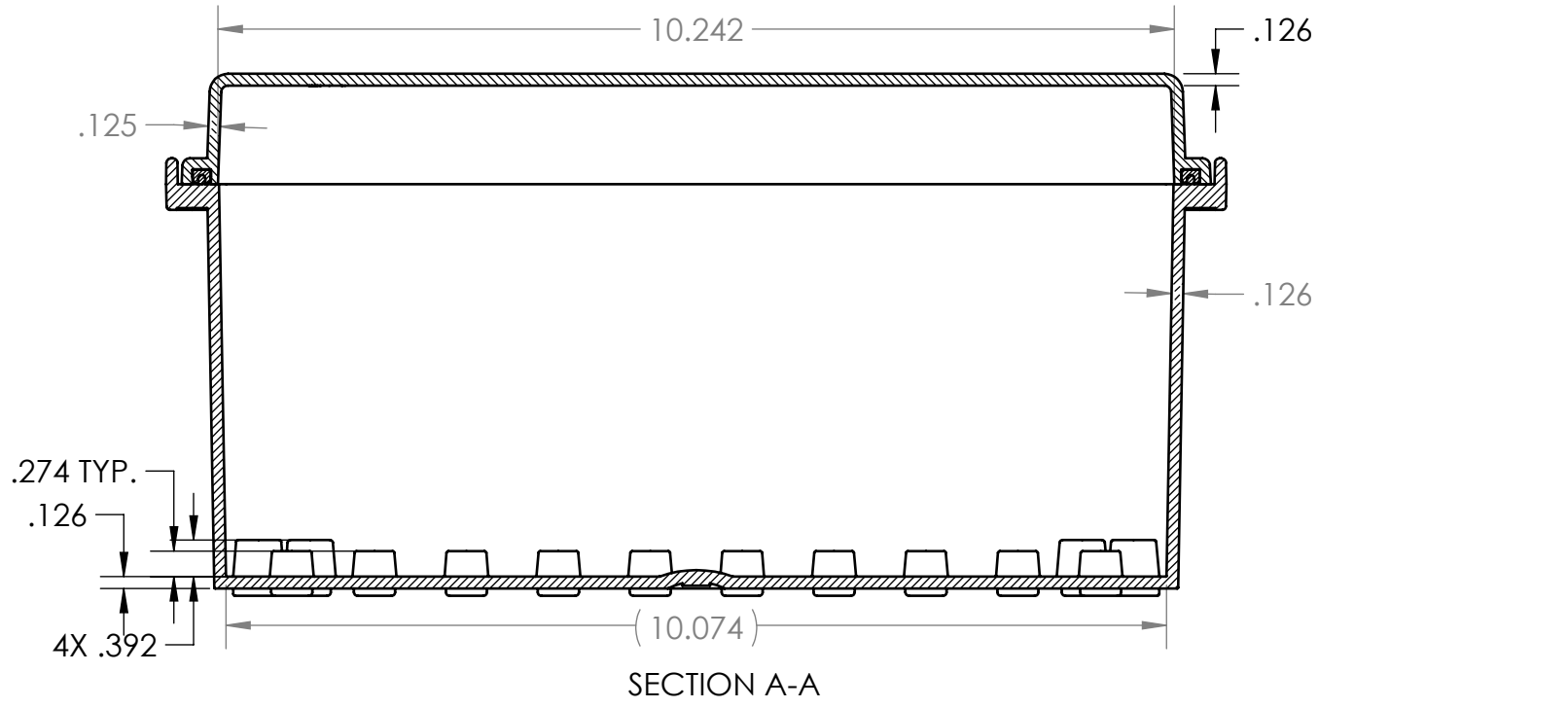
WQ-57S-03
UL LISTED: UL508-4X (E343339)
SERVICE TEMP: -40°C to 95°C
FLAME RATING: UL94-5VA
Outdoor Suitability: UL746C F1

1	PCB BOSS ID: Ø.132 WAS .169	C5	D.M.F.		7/7/2016
REV.	DESCRIPTION	ZONE	BY	APPR'D	DATE
REVISIONS					

UNLESS OTHERWISE SPECIFIED: DIMENSIONS ARE IN INCHES(MM) TOLERANCES: ANGULAR: ±.° TWO PLACE DECIMAL: ±. THREE PLACE DECIMAL: ±. PRINTED GRAPHICS: 1: PROPRIETARY AND CONFIDENTIAL THE INFORMATION CONTAINED IN THIS DRAWING IS THE SOLE PROPERTY OF POLYCASE. ANY REPRODUCTION IN PART OR AS A WHOLE WITHOUT THE WRITTEN PERMISSION OF POLYCASE IS PROHIBITED. (CAD FILE: WQ-57)		PART NO. WQ-57S-02 MATERIAL		FLAME RATING UL94-5VA		SIZE D		SCALE: 1:2		SHEET 1 OF 1	
NAME		DATE		DRAWN		CHECKED		SCALE: 1:2		REV 1	
D.M.F.		1/11/2016		C.C.B.		1/29/2016					

polycase
1901 CENTER HILL PARKWAY SUITE 2000 AUSTIN, TEXAS 78741
PH: 1.800.240.1233 FAX: 512.444.4444

Hinged Nema Enclosure-
Outdoor Use



TOP VIEW WITH COVER HIDDEN

