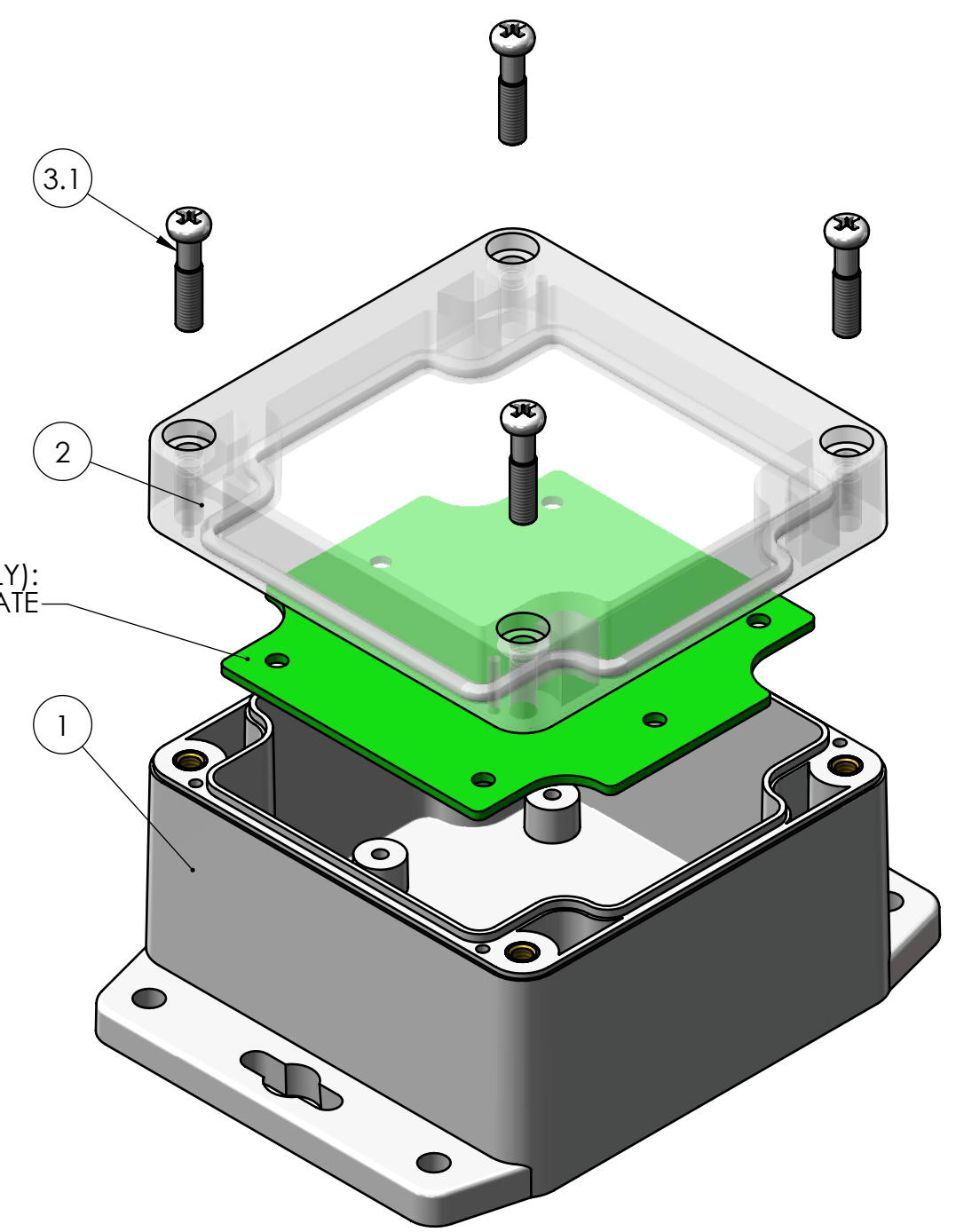
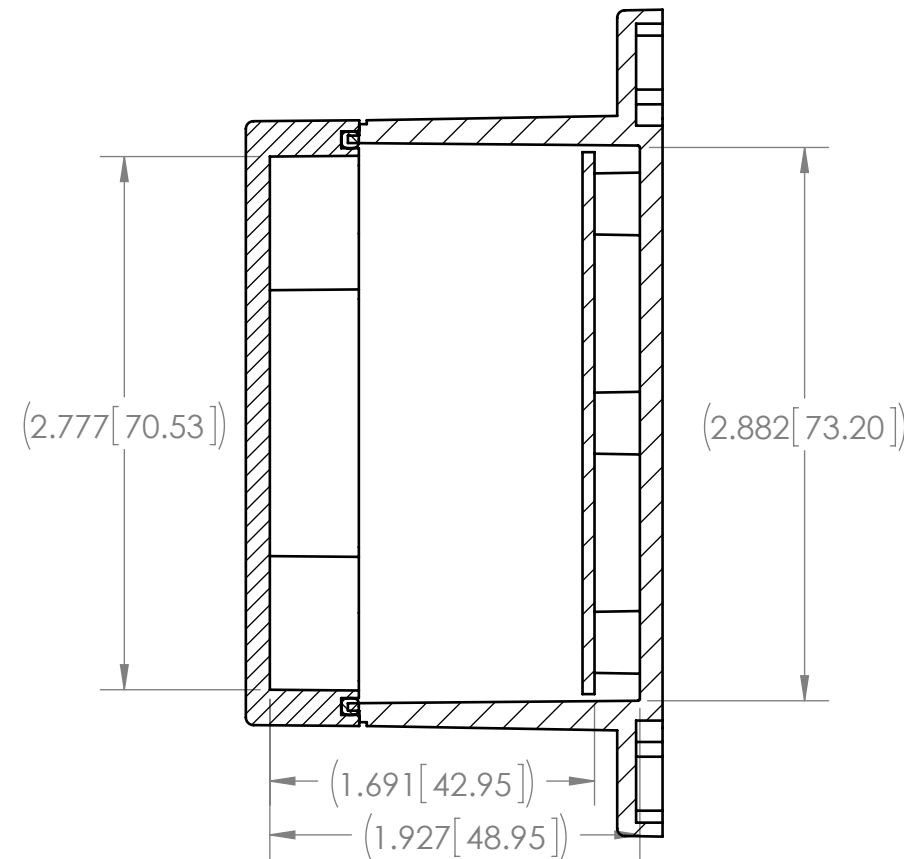
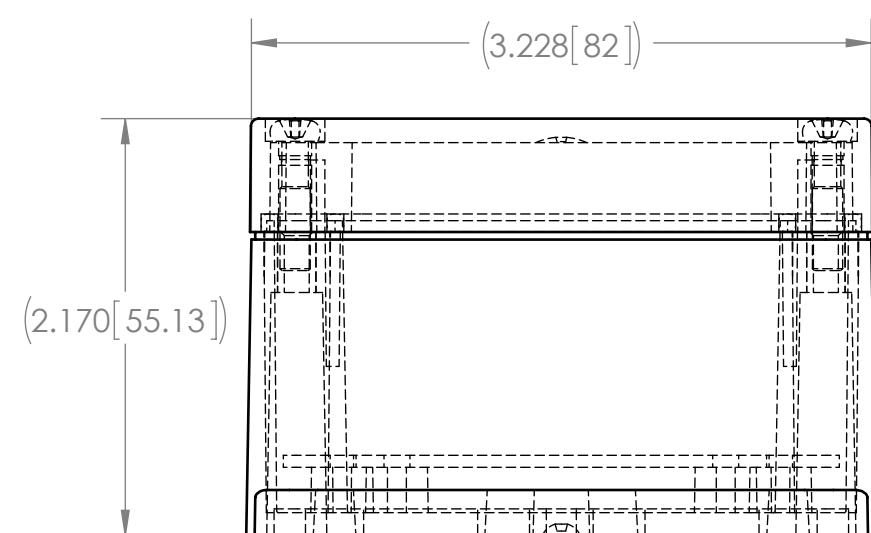
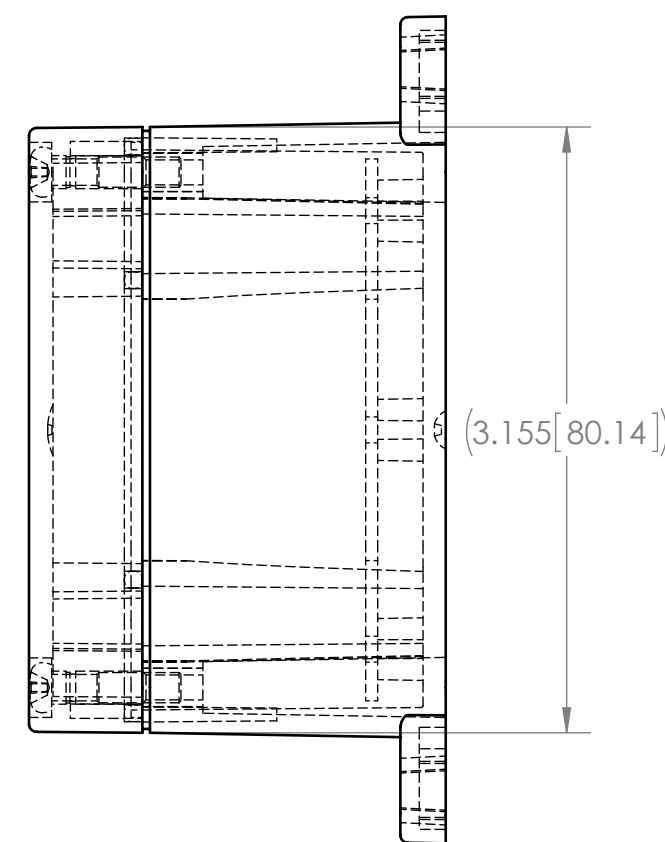
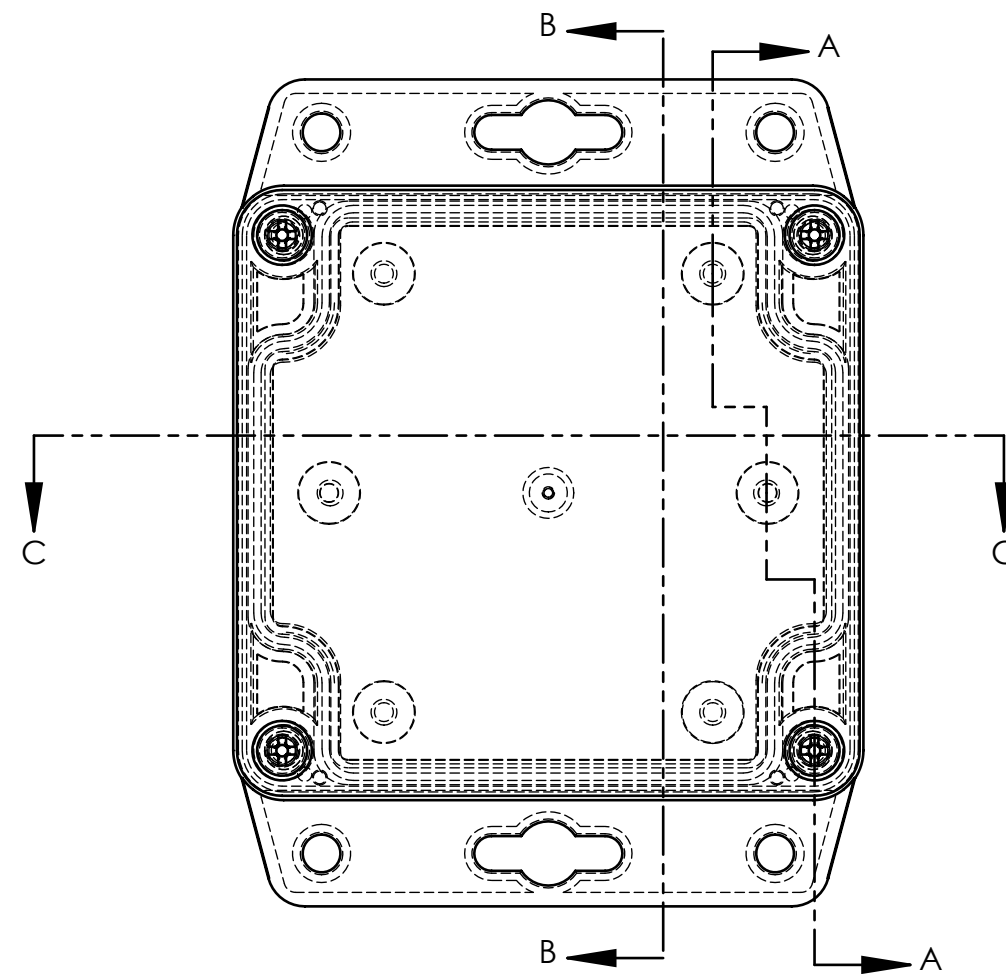
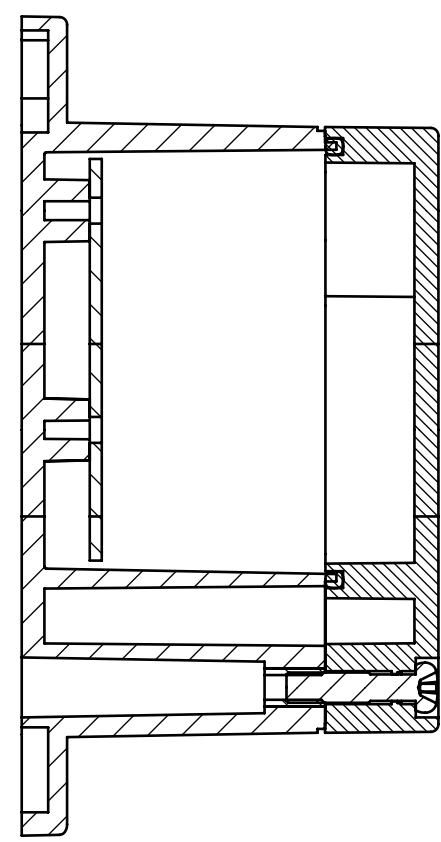
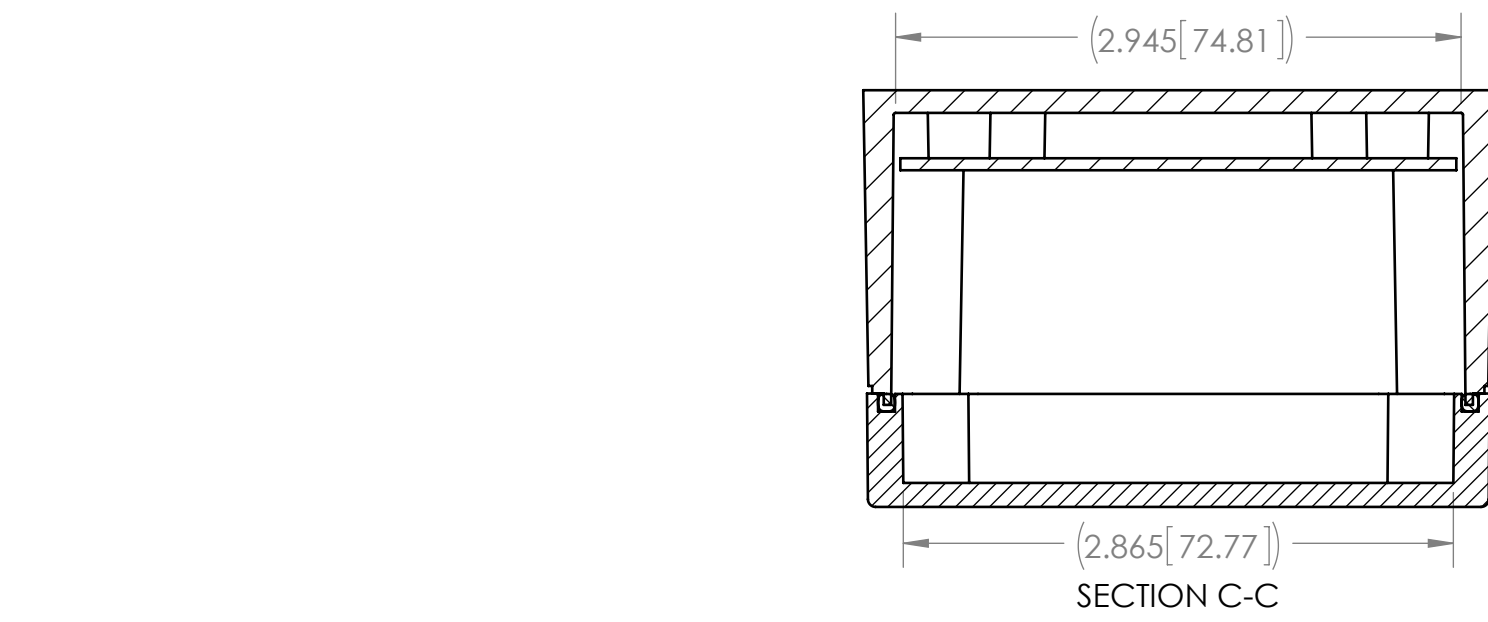


BOM Table							
ITEM NO.	PART NUMBER	Rev.	DESCRIPTION	MATERIAL	FlameRating	Color	QTY.
1	WP-31BF*15	1	WP BASE, W/MOUNTING BOSSES	PC	UL94-HB (UL FILE E41613)	LIGHT GRAY	1
2	WC-31C*08	-.02	WC COVER, W/GASKET	PC	UL94-HB (UL FILE E41613)	CLEAR	1
3	SCREWS-SSM4-20-4	-	ASSEMBLY SCREWS, 4 PACK				1
3.1	SCREWS-SSM4-20	-.01	M4X0.7 X 20mm OAL, PHILLIPS DRIVE MACHINE SCREW	STAINLESS STEEL			4

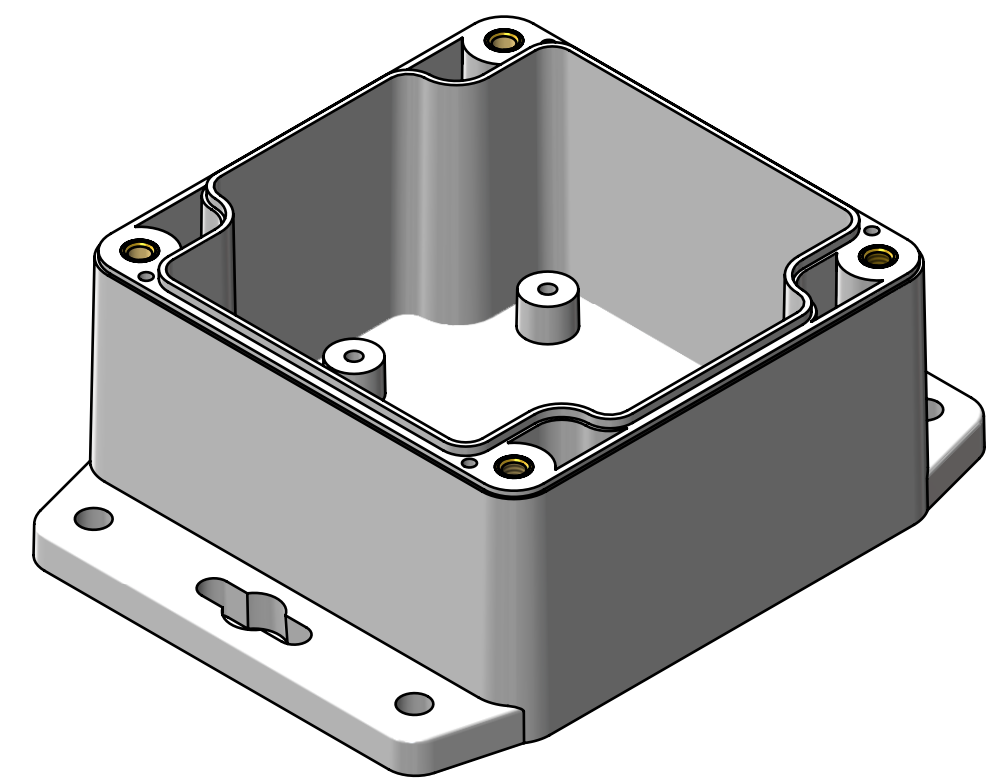
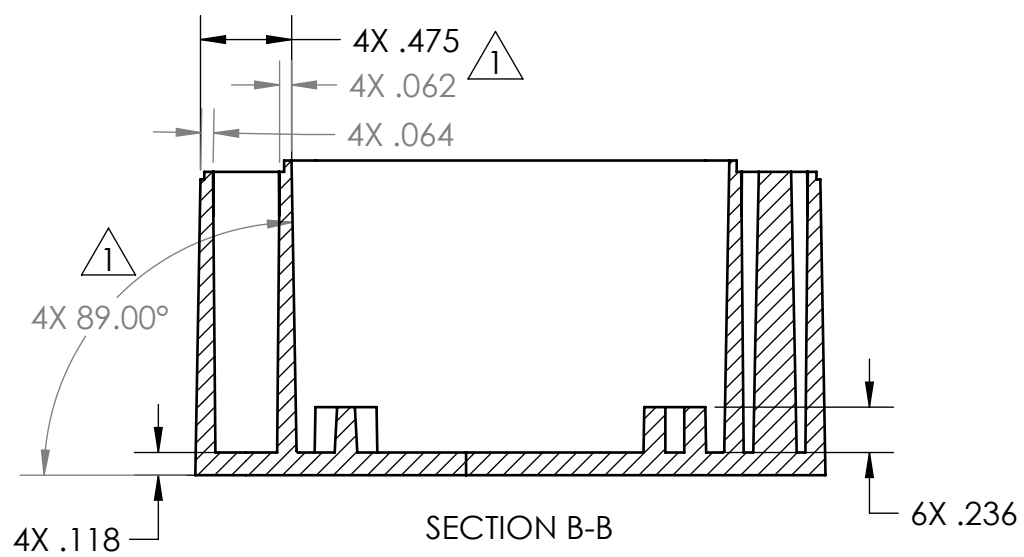
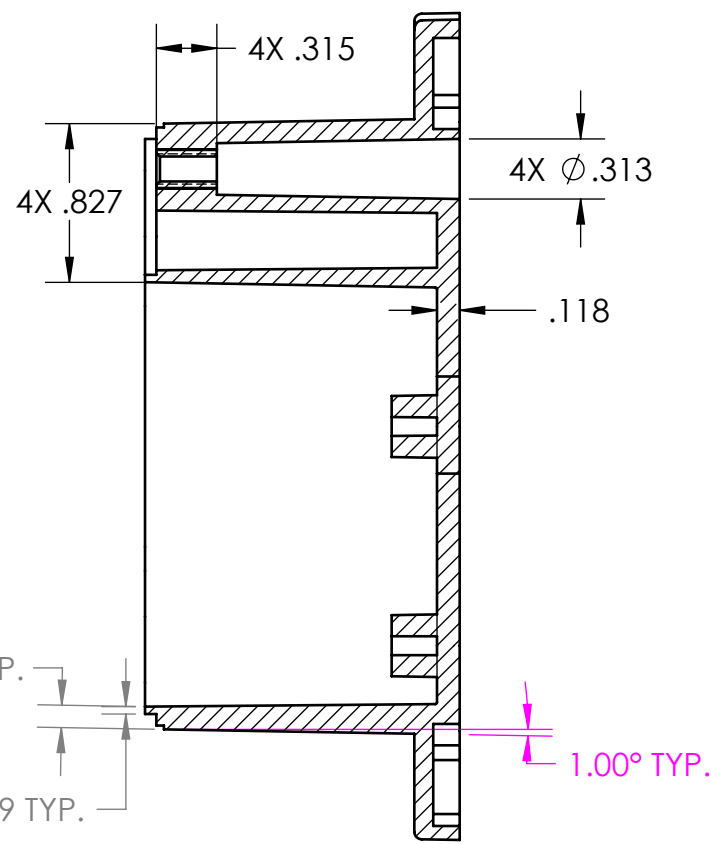
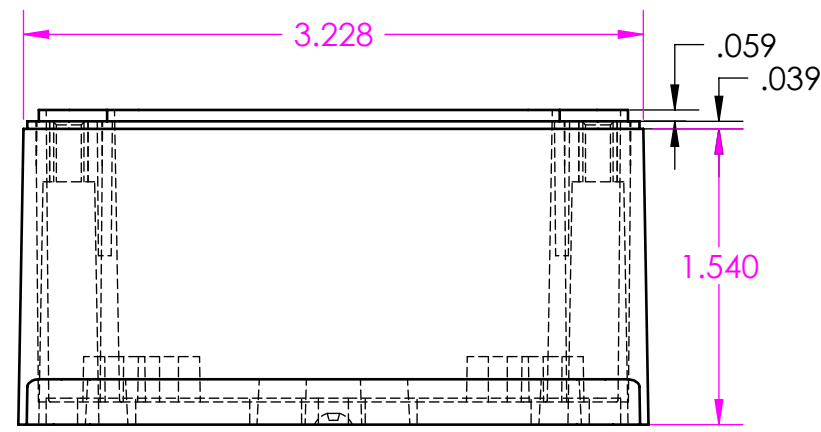
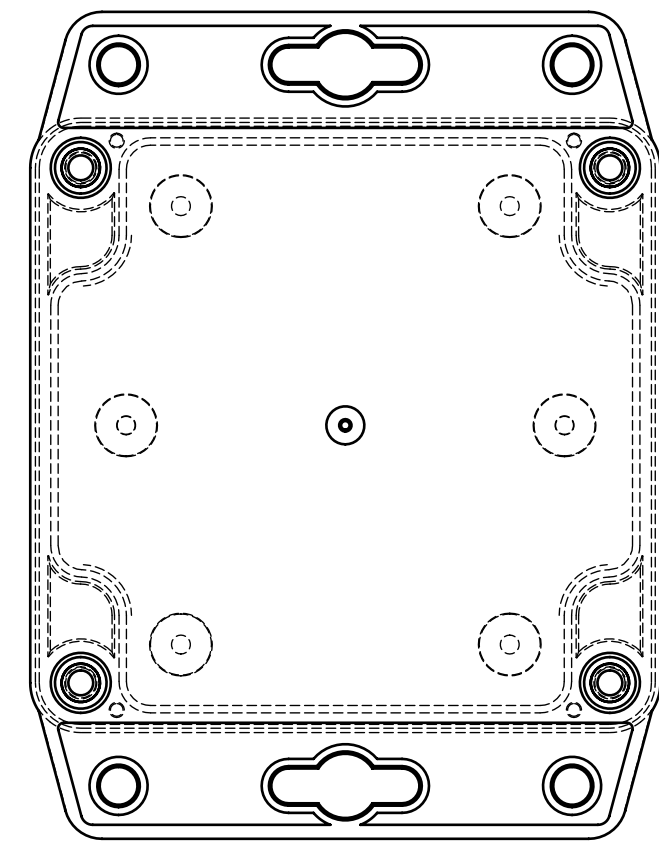
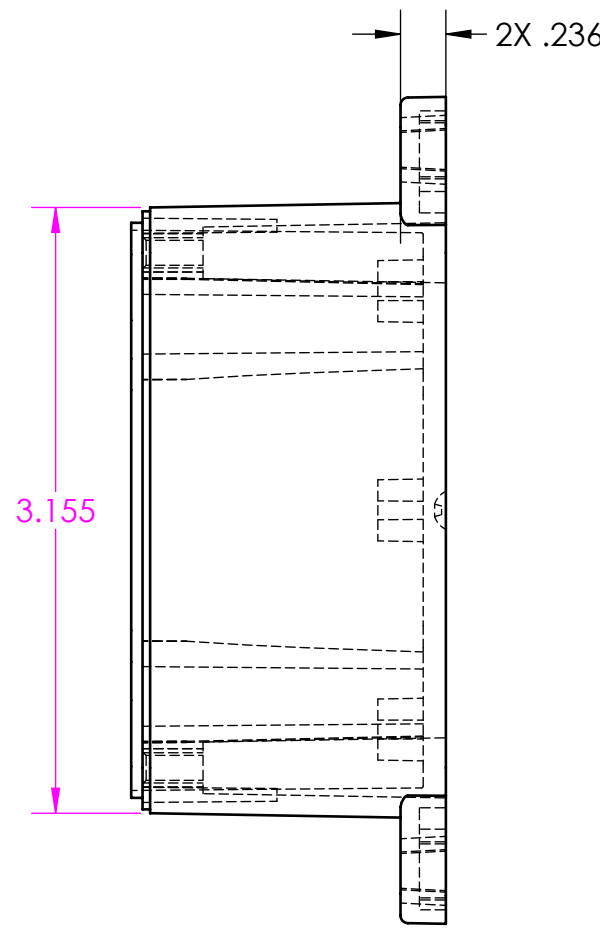
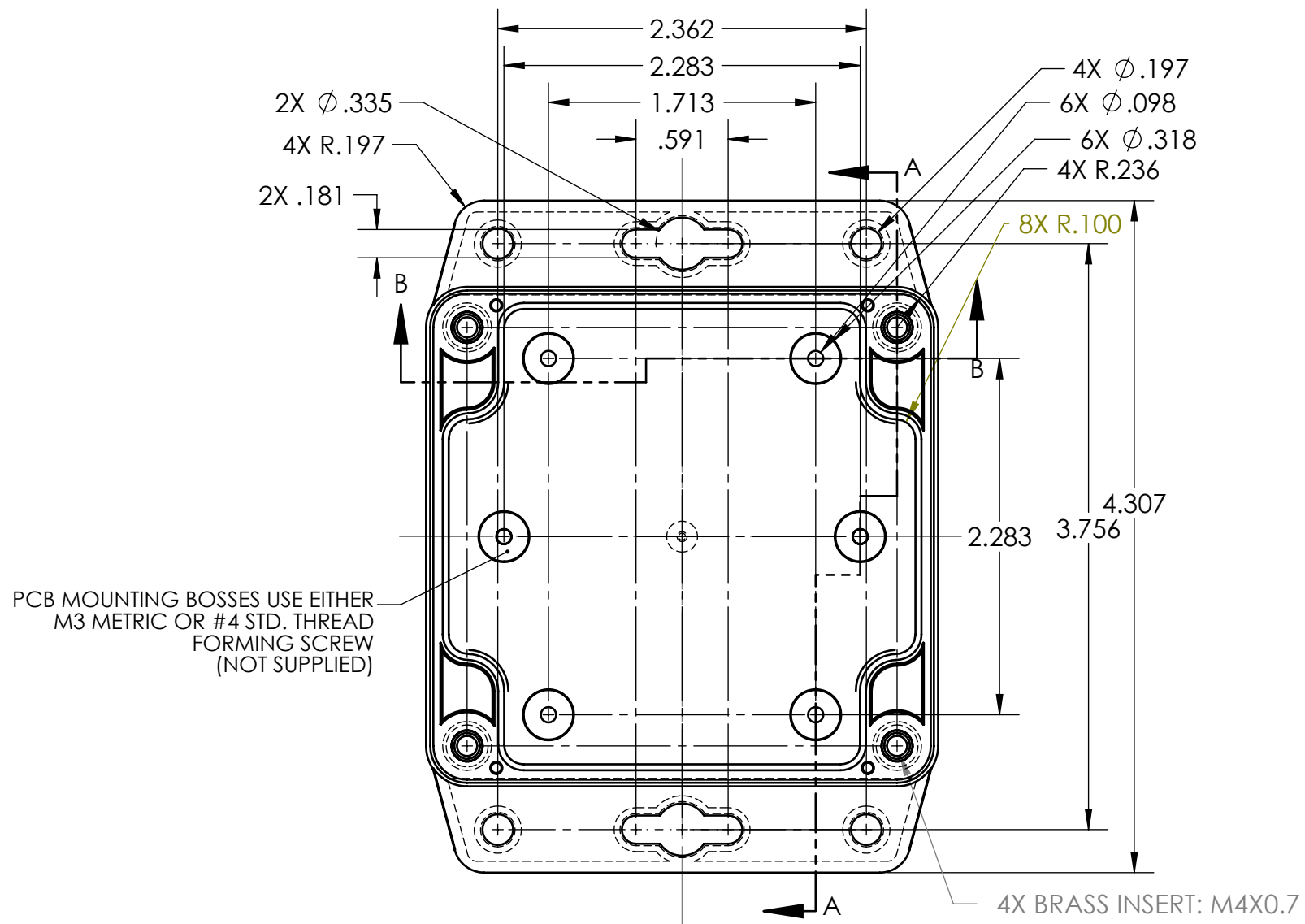


NOTES:
 1. OPERATING TEMPERATURE RANGE: -40°C TO 120°C
 2. DESIGNED TO NEMA 1, 2, 4, 4X, 12, 13
 3. UL LISTED TO UL508-4X SPECIFICATIONS (UL FILE #E194432).

REV.	DESCRIPTION	ZONE	BY	APPR'D	DATE
1	UPDATED PCB TEMPLATE		D.M.F.	C.C.B.	6/20/2016
REVISIONS					

UNLESS OTHERWISE SPECIFIED: DIMENSIONS ARE IN: INCHES[mm] TOLERANCES: ANGULAR: ±2° TWO PLACE DECIMAL: ±.030 THREE PLACE DECIMAL: ±.015 PRINTED GRAPHICS: ±.010		PART NO. WC-31F*1508		 1305 CHESTER RD. PARKWAY AVON, OHIO 44011-1083 U.S.A. PH: 1-800-248-1233, 440-934-0444 FAX: 440-934-0088	
PROPRIETARY AND CONFIDENTIAL THE INFORMATION CONTAINED IN THIS DRAWING IS THE SOLE PROPERTY OF POLYCASE. ANY REPRODUCTION IN PART OR AS A WHOLE WITHOUT THE WRITTEN PERMISSION OF POLYCASE IS PROHIBITED. CAD FILE: WC-31F*1508		MATERIAL			
FLAME RATING UL94-HB		SIZE C		Product Assembly Drawing	
DRAWN CHECKED		NAME B.M.B.		DATE 6/13/2014	
SCALE: 1:1		REV 1		SHEET 1 OF 1	

TOLERANCE CHART															
DIMENSION RANGE	0	.039	.118	.236	.394	.591	.866	1.181	1.575	2.087	2.756	3.543	4.724	6.299	7.874
	TOOL DEPENDENT	±.007	±.007	±.008	±.008	±.009	±.010	±.011	±.012	±.013	±.015	±.017	±.020	±.024	±.028
NON-TOOL DEPENDENT	±.003	±.004	±.004	±.004	±.005	±.006	±.007	±.008	±.009	±.011	±.013	±.016	±.020	±.024	±.031



NOTES:
1. COLOR: LIGHT GRAY

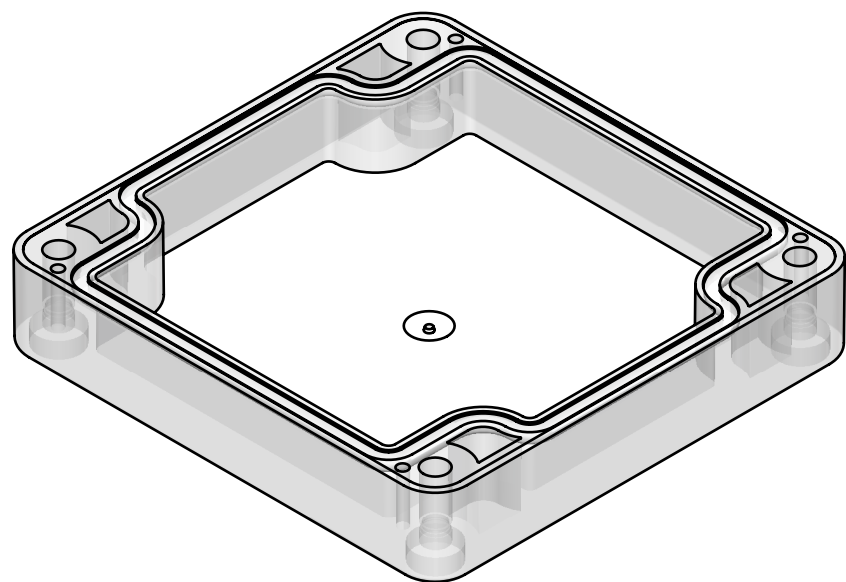
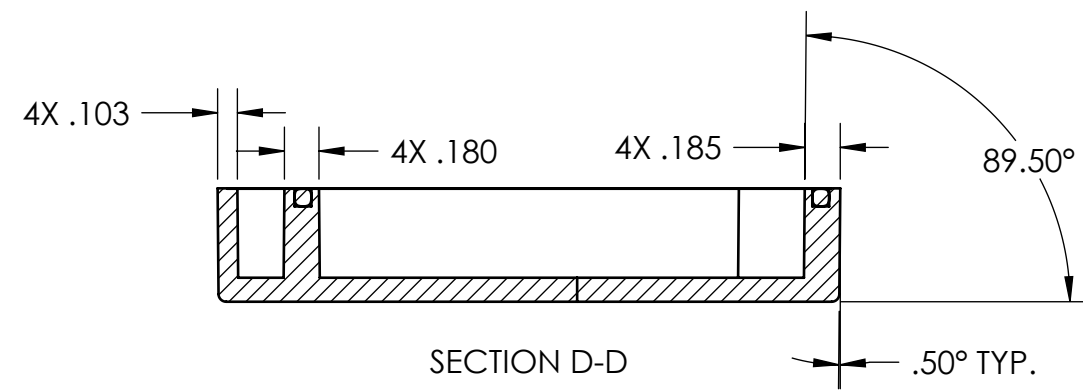
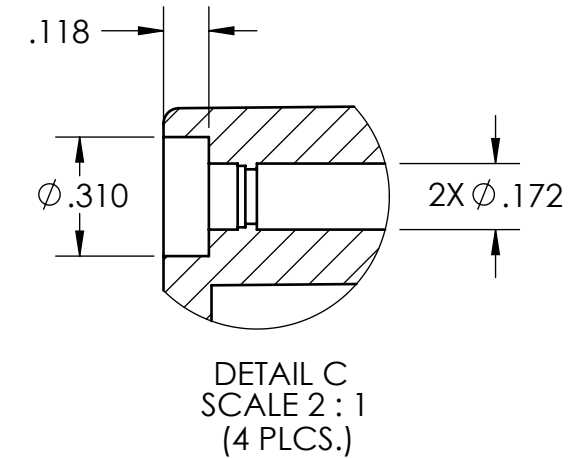
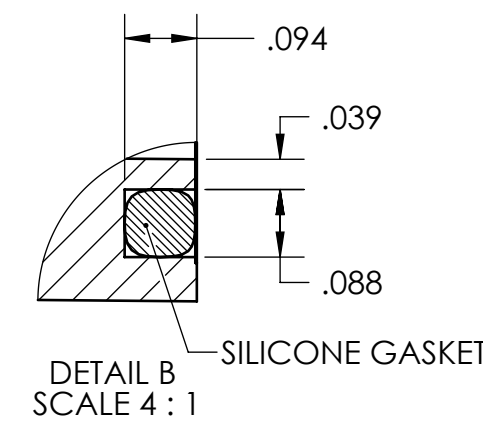
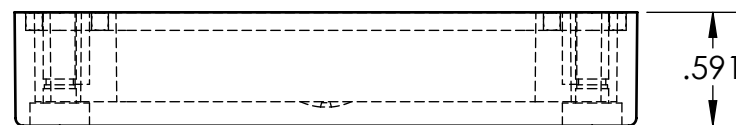
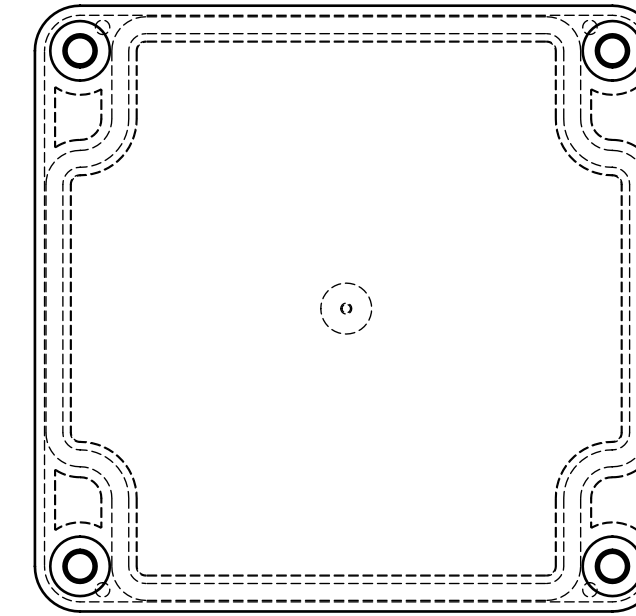
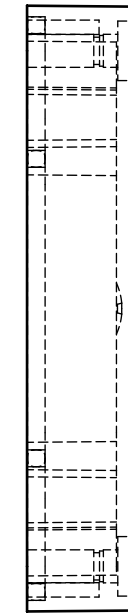
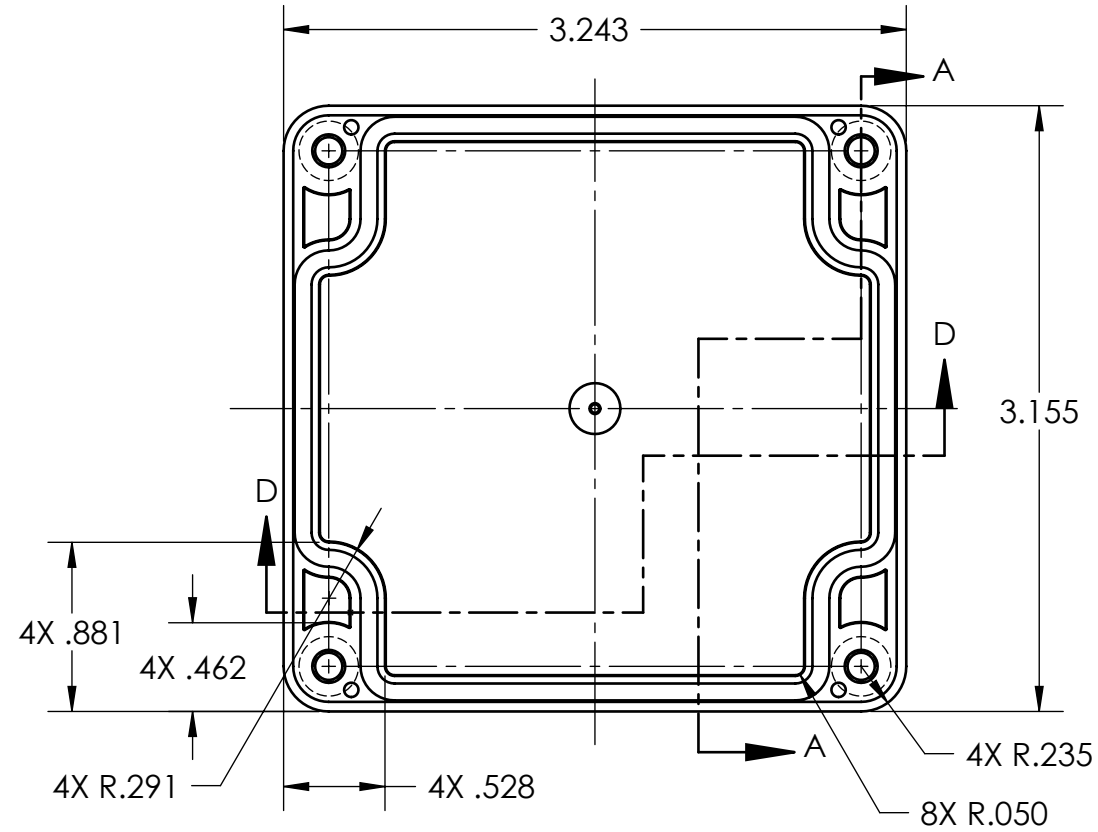
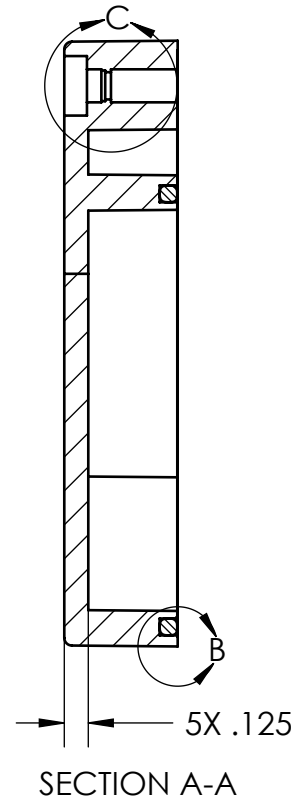
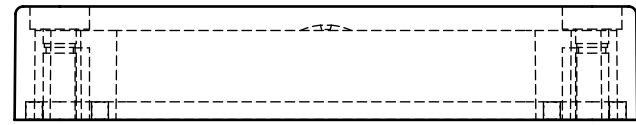
UNLESS OTHERWISE SPECIFIED:
DIMENSIONS ARE IN: INCHES[mm]
TOLERANCES: ANGULAR: ±2°
TWO PLACE DECIMAL: ±
THREE PLACE DECIMAL: ±
PRINTED GRAPHICS: ±.010

PART NO.
WP-31BF*15
MATERIAL
PC
FLAME RATING
UL94-HB (UL FILE E41613)
DRAWN
CHECKED

polycase
1305 CHESTER RD. PARKWAY AVON, OHIO 44011-1083 U.S.A.
PH: 1-800-248-1233, 440-934-0444 FAX: 440-934-0088
WP BASE, W/MOUNTING BOSSES
REV
1
SCALE: 1:1
SHEET 1 OF 1

REV.	DESCRIPTION	ZONE	BY	APPR'D	DATE
1	.475 WAS .462, 89° WAS 89.5°	B7	D.M.F.	C.C.B.	6/20/2016
REVISIONS					

DIMENSION RANGE	TOLERANCE CHART												
	0	.039	.118	.236	.394	.591	.866	1.181	1.575	2.087	2.756	3.543	4.724
TOOL DEPENDENT	±.007	±.007	±.008	±.008	±.009	±.010	±.011	±.012	±.013	±.015	±.017	±.020	±.024
NON-TOOL DEPENDENT	±.003	±.004	±.004	±.004	±.005	±.006	±.007	±.008	±.009	±.011	±.013	±.016	±.020

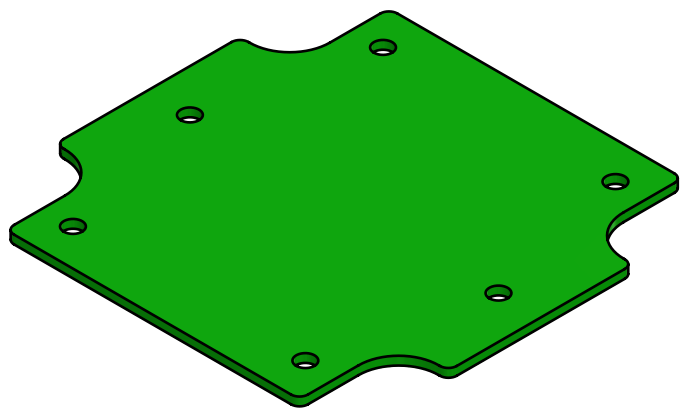
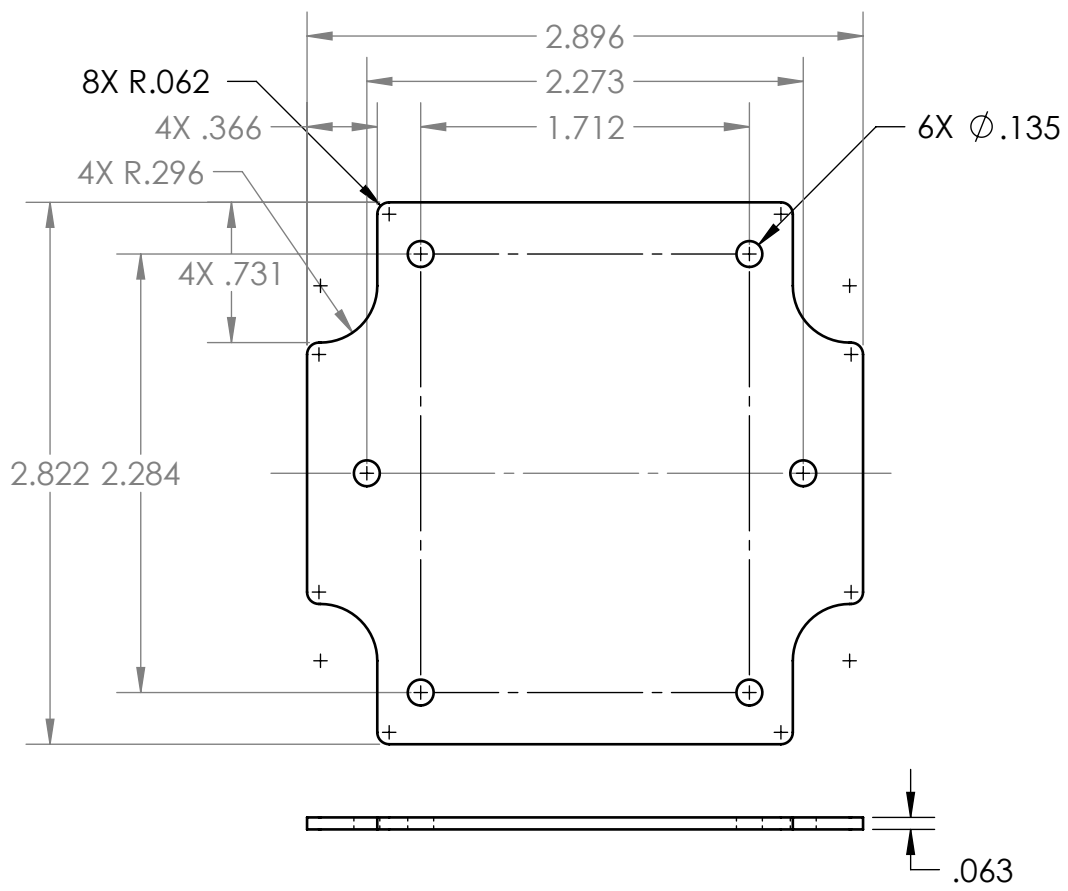


NOTES:
1. COLOR: CLEAR

UNLESS OTHERWISE SPECIFIED: DIMENSIONS ARE IN: INCHES[mm] TOLERANCES: ANGULAR: ±2° TWO PLACE DECIMAL: ±.030 THREE PLACE DECIMAL: ±.015 PRINTED GRAPHICS: ±.010		PART NO. WC-31C*08		 <small>1305 CHESTER RD. PARKWAY AVON, OHIO 44011-1083 U.S.A. PH: 1-800-548-1233 440-934-0444 FAX: 440-934-0088</small>					
PROPRIETARY AND CONFIDENTIAL THE INFORMATION CONTAINED IN THIS DRAWING IS THE SOLE PROPERTY OF POLYCASE. ANY REPRODUCTION IN PART OR AS A WHOLE WITHOUT THE WRITTEN PERMISSION OF POLYCASE IS PROHIBITED. CAD FILE: WC-31C*08		MATERIAL PC				FLAME RATING UL94-HB (UL FILE E41613)	SIZE C		
REV.	DESCRIPTION	ZONE	BY	APPR'D	DATE	SCALE: 1:1	WC COVER, W/GASKET	REV	SHEET 1 OF 1

REV.	DESCRIPTION	ZONE	BY	APPR'D	DATE
REVISIONS					

DRAWN	NAME	DATE
CHECKED	D.M.F.	3/20/2013
	C.C.B.	3/26/2013



REV.	DESCRIPTION	ZONE	BY	APPR'D	DATE
1	REDESIGNED		D.M.F.	C.C.B.	6/20/2016
REVISIONS					

UNLESS OTHERWISE SPECIFIED:
DIMENSIONS ARE IN: INCHES[mm]
TOLERANCES: ANGULAR: ±2°
TWO PLACE DECIMAL: ±.010
THREE PLACE DECIMAL: ±.005
PRINTED GRAPHICS: ±.010

PROPRIETARY AND CONFIDENTIAL
THE INFORMATION CONTAINED IN THIS
DRAWING IS THE SOLE PROPERTY OF
POLYCASE. ANY REPRODUCTION IN PART
OR AS A WHOLE WITHOUT THE WRITTEN
PERMISSION OF POLYCASE IS PROHIBITED.
CAD FILE: W_-31B-PCB

PART NO.
W_-31B-PCB

MATERIAL

FLAME RATING

SIZE
A

SCALE: 1:1

polycase
1305 CHESTER IND. PARKWAY AVON, OHIO 44011-1083 U.S.A.
PH#: 1-800-248-1233, 440-934-0444 FAX#: 440-934-0088

PCB TEMPLATE

REV
1

SHEET 1 OF 1