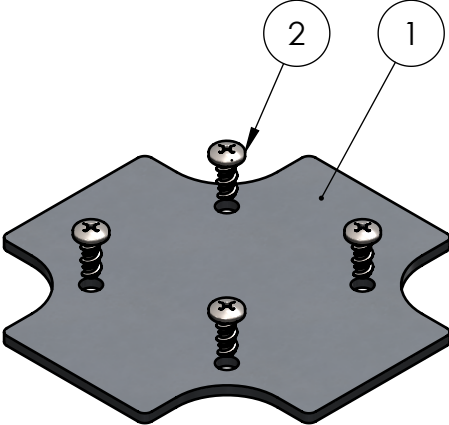
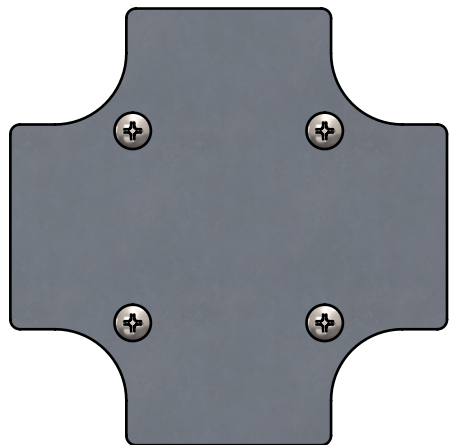




BOM Table					
ITEM NO.	PART NUMBER	Rev.	Description	Material	QTY.
1	ML-22P	-	MOUNTING PANEL	AL 5052-H32	1
2	SCREWS-MBR	-.01	#4-24 HI-LO X .25 THREAD FORMING, PHILLIPS, PAN HEAD, SCREW	AISI 1019-1022	4



UNLESS OTHERWISE SPECIFIED: DIMENSIONS ARE IN: INCHES[mm] TOLERANCES: ANGULAR: ±2° TWO PLACE DECIMAL: ±.010 THREE PLACE DECIMAL: ±.005 PRINTED GRAPHICS: ±.010						PART NO. ML-22K			<div></div> <div>1305 CHESTER IND. PARKWAY AVON, OHIO 44011-1083 U.S.A. PH#: 1-800-248-1233, 440-934-0444 FAX#: 440-934-0088</div>			REV -		
						MATERIAL								
PROPRIETARY AND CONFIDENTIAL THE INFORMATION CONTAINED IN THIS DRAWING IS THE SOLE PROPERTY OF POLYCASE. ANY REPRODUCTION IN PART OR AS A WHOLE WITHOUT THE WRITTEN PERMISSION OF POLYCASE IS PROHIBITED. CAD FILE: ML-22K						FLAME RATING			SIZE A		SHEET 1 OF 1			
						DRAWN		NAME		DATE				
CHECKED		D.M.F.		10/24/2016										
		-		12/31/2999										
REV.	DESCRIPTION	ZONE	BY	APPR'D	DATE	SCALE: 1:1								
REVISIONS														

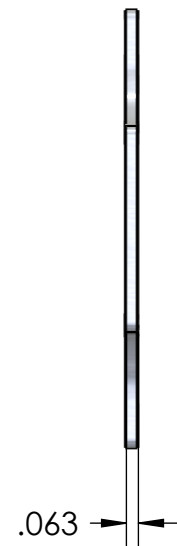
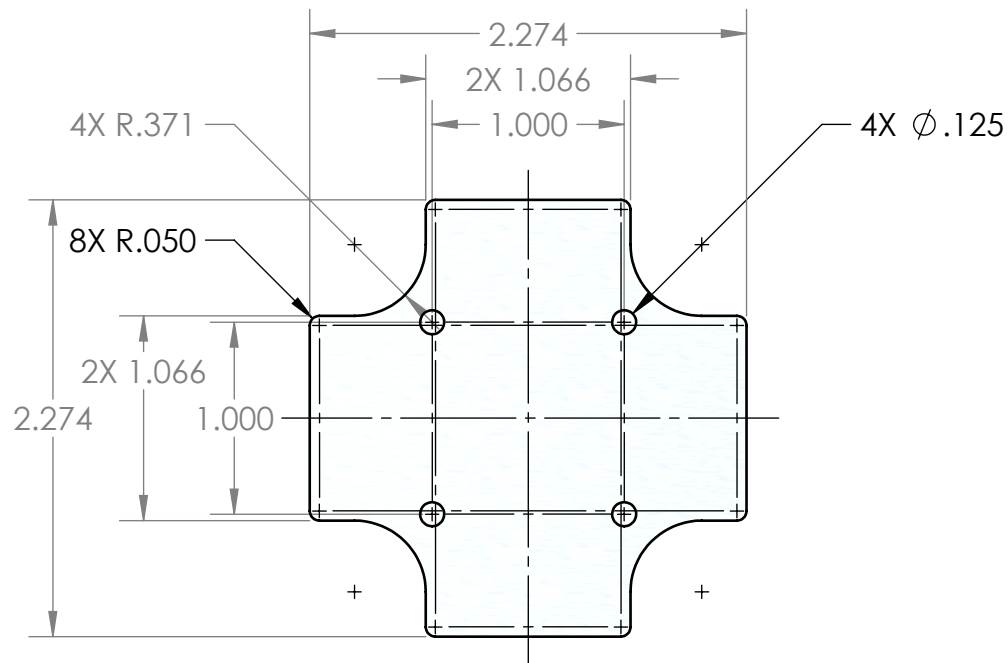
5

4



3

2

1



- NOTES:
1. BREAK ALL EDGES .005 MAX

UNLESS OTHERWISE SPECIFIED: DIMENSIONS ARE IN: INCHES[mm] TOLERANCES: ANGULAR: ±2° TWO PLACE DECIMAL: ±.010 THREE PLACE DECIMAL: ±.005 PRINTED GRAPHICS: ±.010		PART NO. ML-22P		<div><p>1305 CHESTER IND. PARKWAY AVON, OHIO 44011-1083 U.S.A. PH#: 1-800-248-1233, 440-934-0444 FAX#: 440-934-0088</p></div>			
PROPRIETARY AND CONFIDENTIAL THE INFORMATION CONTAINED IN THIS DRAWING IS THE SOLE PROPERTY OF POLYCASE. ANY REPRODUCTION IN PART OR AS A WHOLE WITHOUT THE WRITTEN PERMISSION OF POLYCASE IS PROHIBITED. CAD FILE: ML-22P		MATERIAL AL 5052-H32					
FLAME RATING		SIZE A		MOUNTING PANEL			REV -
	NAME	DATE					
DRAWN	D.M.F.	7/20/2016					
CHECKED	-	12/14/2011		SCALE: 1:1			SHEET 1 OF 1

REV.	DESCRIPTION	ZONE	BY	APPR'D	DATE
REVISIONS					

5

4

3

2

1

D

C

B

A