

BOM Table					
ITEM NO.	PART NUMBER	Rev.	Description	Material	QTY.
1	YH-0606P	-	MOUNTING PANEL	AL 5052-H32	1
2	SCREWS-011		#10-32 X .250 Pan Head Phillips Machine Screw	1006-1022 EQUIV.	4

REV.	DESCRIPTION	ZONE	BY	APPR'D	DATE
REVISIONS					

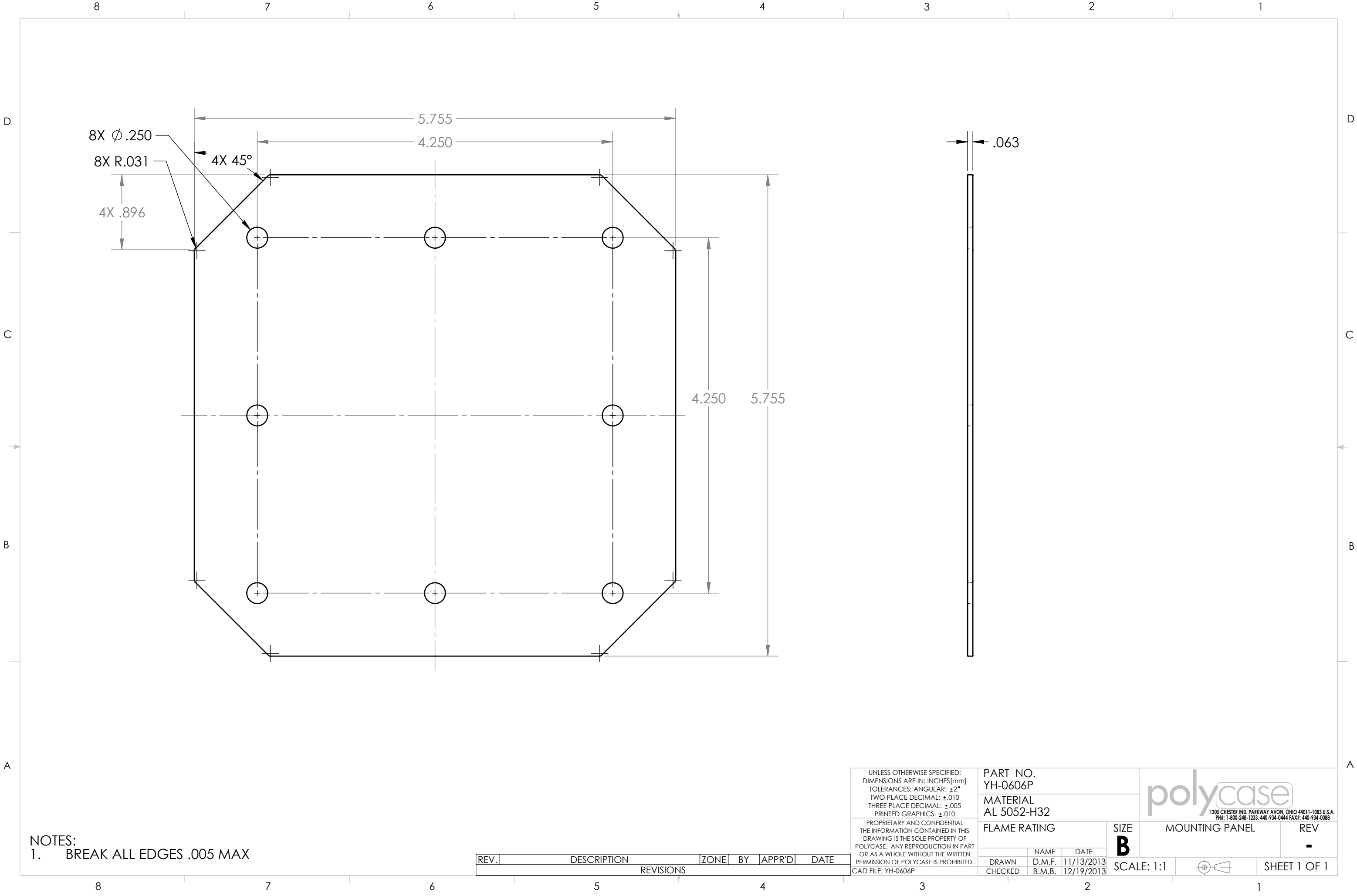
UNLESS OTHERWISE SPECIFIED:
DIMENSIONS ARE IN: INCHES [mm]
TOLERANCES: ANGULAR: $\pm 2^{\circ}$
TWO PLACE DECIMAL: $\pm .010$
THREE PLACE DECIMAL: $\pm .005$
PRINTED GRAPHICS: $\pm .010$


PROPRIETARY AND CONFIDENTIAL
THE INFORMATION CONTAINED IN THIS
DRAWING IS THE SOLE PROPERTY OF
POLYCASE. ANY REPRODUCTION IN PART
OR AS A WHOLE WITHOUT THE WRITTEN
PERMISSION OF POLYCASE IS PROHIBITED.
CAD FILE: YX-0606K

PART NO. YX-0606K		
MATERIAL		
FLAME RATING		SIZE B
DRAWN	NAME D.M.F.	DATE 1/2/2014
CHECKED	B.M.B.	1/8/2014

1305 CHESTER IND. PARKWAY AVON, OHIO 44011-1083 U.S.A.
PH#: 1-800-248-1233, 440-934-0444 FAX#: 440-934-0088

MOUNTING PANEL KIT		REV -
SCALE: 1:1		SHEET 1 OF 1



UNLESS OTHERWISE SPECIFIED: DIMENSIONS ARE IN: INCHES[mm] TOLERANCES: ANGULAR: ±2° TWO PLACE DECIMAL: ±.010 THREE PLACE DECIMAL: ±.005 PRINTED GRAPHICS: ±.010		PART NO. YH-0606P		<div></div> <div>1305 CHESTER IND. PARKWAY AVON, OHIO 44011-1083 U.S.A. PH#: 1-800-248-1233, 440-934-0444 FAX#: 440-934-0088</div>			
		MATERIAL AL 5052-H32					
PROPRIETARY AND CONFIDENTIAL THE INFORMATION CONTAINED IN THIS DRAWING IS THE SOLE PROPERTY OF POLYCASE. ANY REPRODUCTION IN PART OR AS A WHOLE WITHOUT THE WRITTEN PERMISSION OF POLYCASE IS PROHIBITED. CAD FILE: YH-0606P		FLAME RATING		SIZE B	MOUNTING PANEL		REV -
			NAME	DATE			
		DRAWN	D.M.F.	11/13/2013			
		CHECKED	B.M.B.	12/19/2013	SCALE: 1:1		