

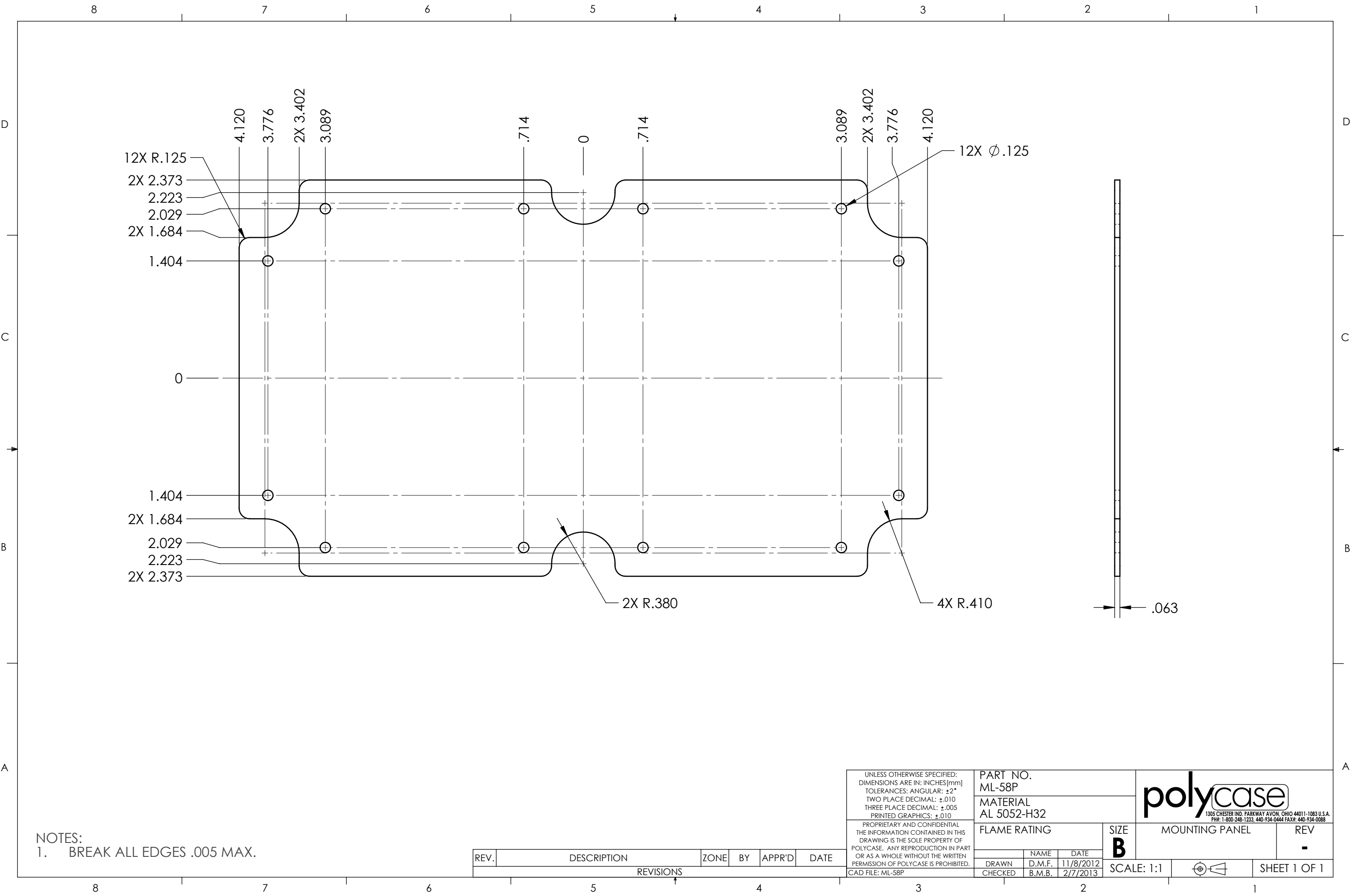


BOM Table					
ITEM NO.	PART NUMBER	Rev.	Description	Material	QTY.
1	ML-58P	-	MOUNTING PANEL	AL 5052-H32	1
2	SCREWS-MBR	-.01	#4-24 HI-LO X .25 THREAD FORMING, PHILLIPS, PAN HEAD, SCREW	AISI 1019-1022	4

SCALE 1 : 1.5

UNLESS OTHERWISE SPECIFIED: DIMENSIONS ARE IN: INCHES[mm] TOLERANCES: ANGULAR: ±2° TWO PLACE DECIMAL: ±.010 THREE PLACE DECIMAL: ±.005 PRINTED GRAPHICS: ±.010	PART NO. ML-58K		<div><div>1305 CHESTER IND. PARKWAY AVON, OHIO 44011-1083 U.S.A. PH#: 1-800-248-1233, 440-934-0444 FAX#: 440-934-0088</div></div>			
	MATERIAL					
PROPRIETARY AND CONFIDENTIAL THE INFORMATION CONTAINED IN THIS DRAWING IS THE SOLE PROPERTY OF POLYCASE. ANY REPRODUCTION IN PART OR AS A WHOLE WITHOUT THE WRITTEN PERMISSION OF POLYCASE IS PROHIBITED. CAD FILE: ML-58K	FLAME RATING		SIZE B	MOUNTING PANEL KIT		REV -
		NAME	DATE			
	DRAWN	D.M.F.	2/4/2013			
	CHECKED	B.M.B.	2/7/2013	SCALE: 1:1		
						SHEET 1 OF 1

REV.	DESCRIPTION	ZONE	BY	APPR'D	DATE
REVISIONS					



NOTES:
1. BREAK ALL EDGES .005 MAX.