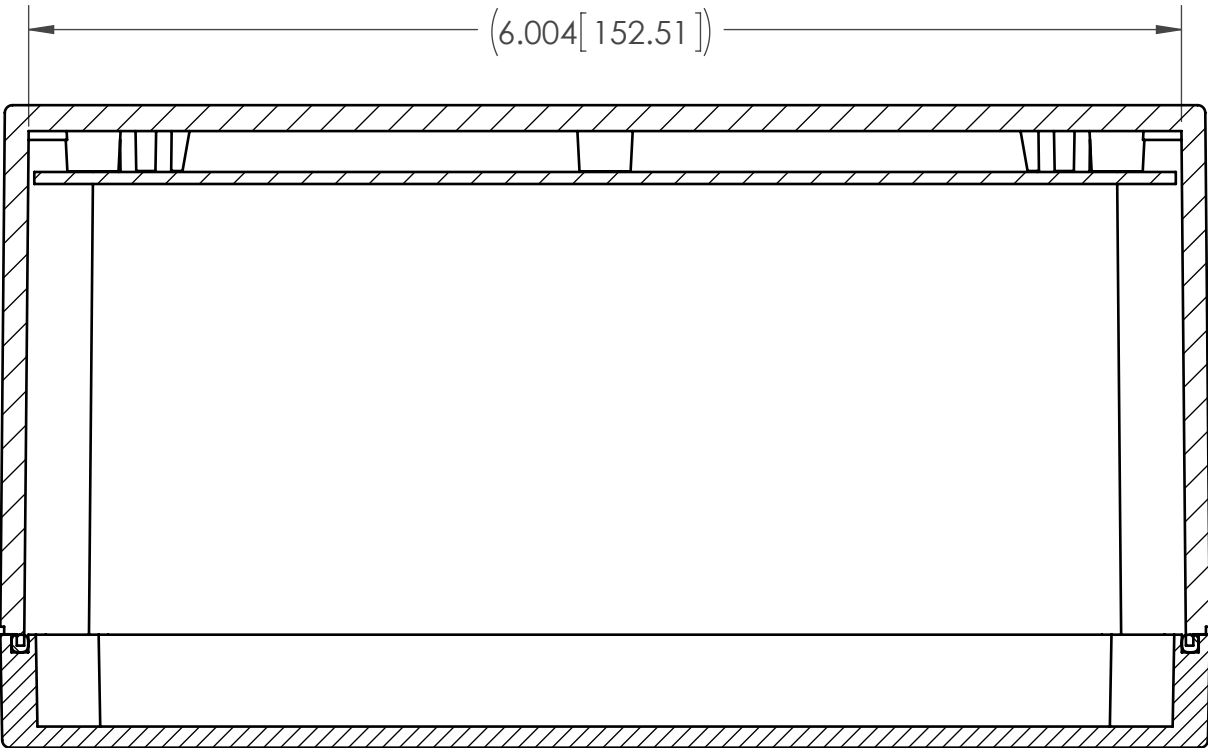
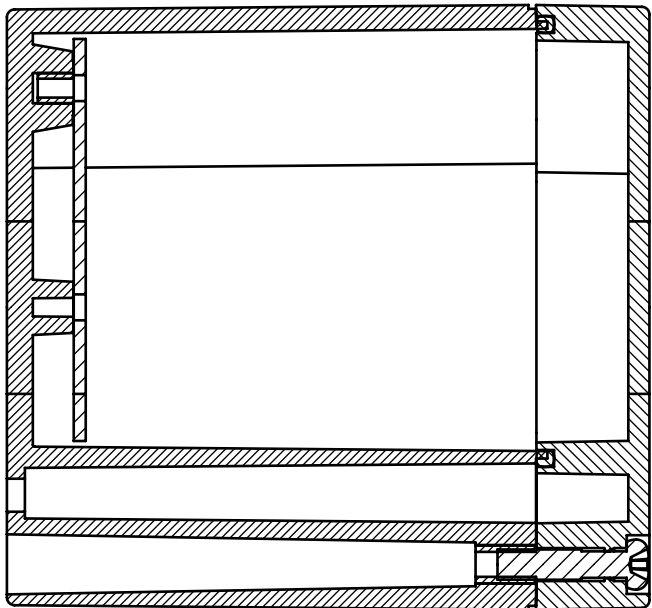
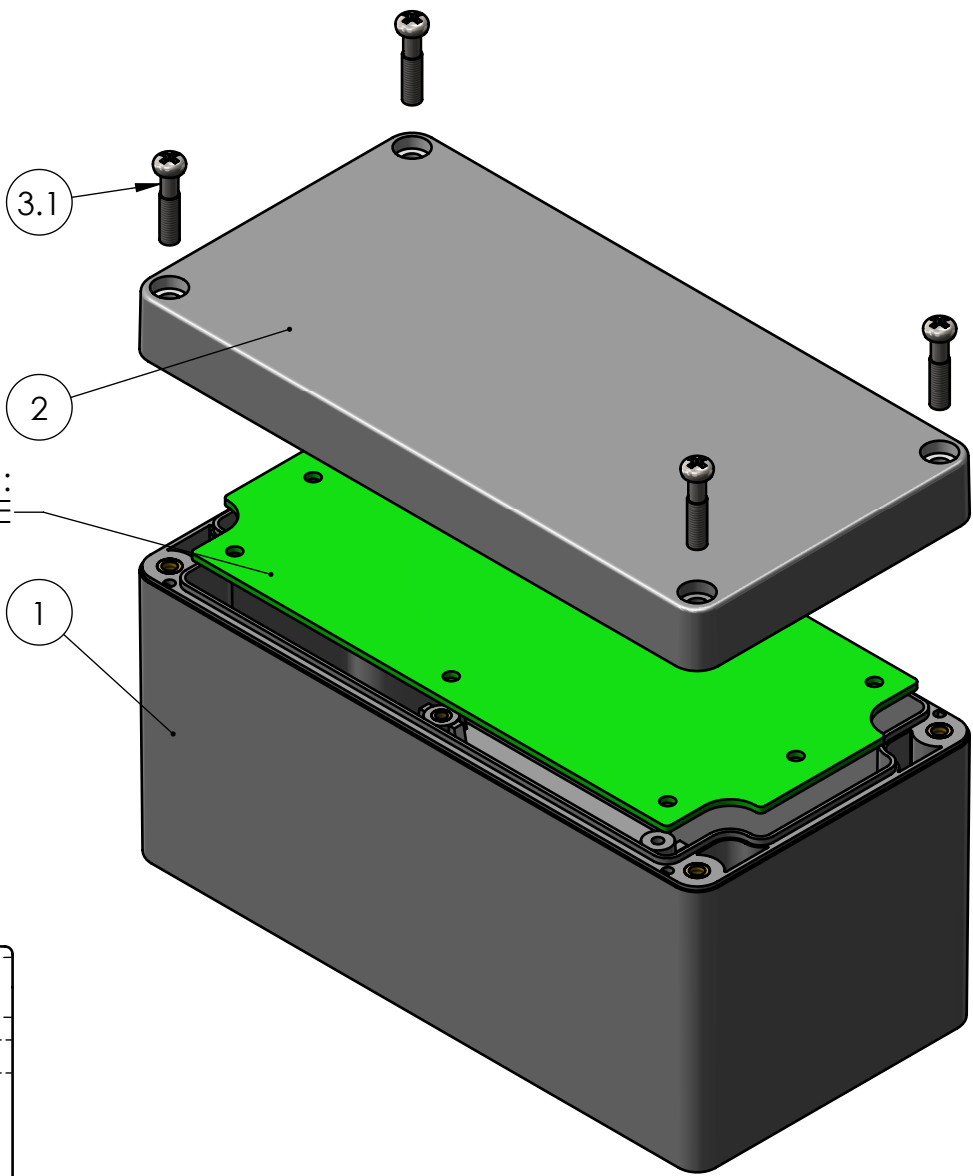


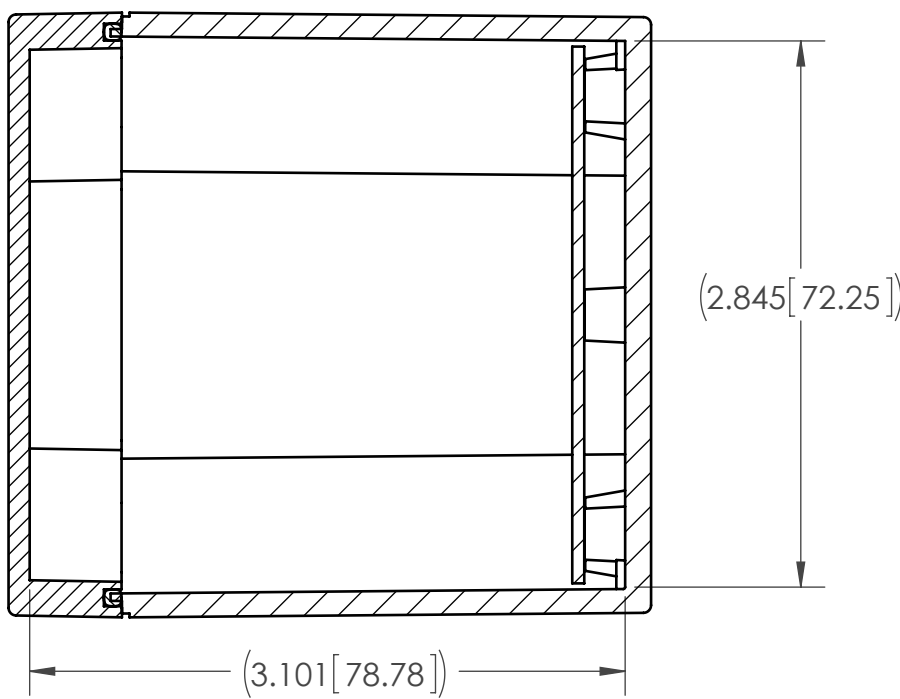
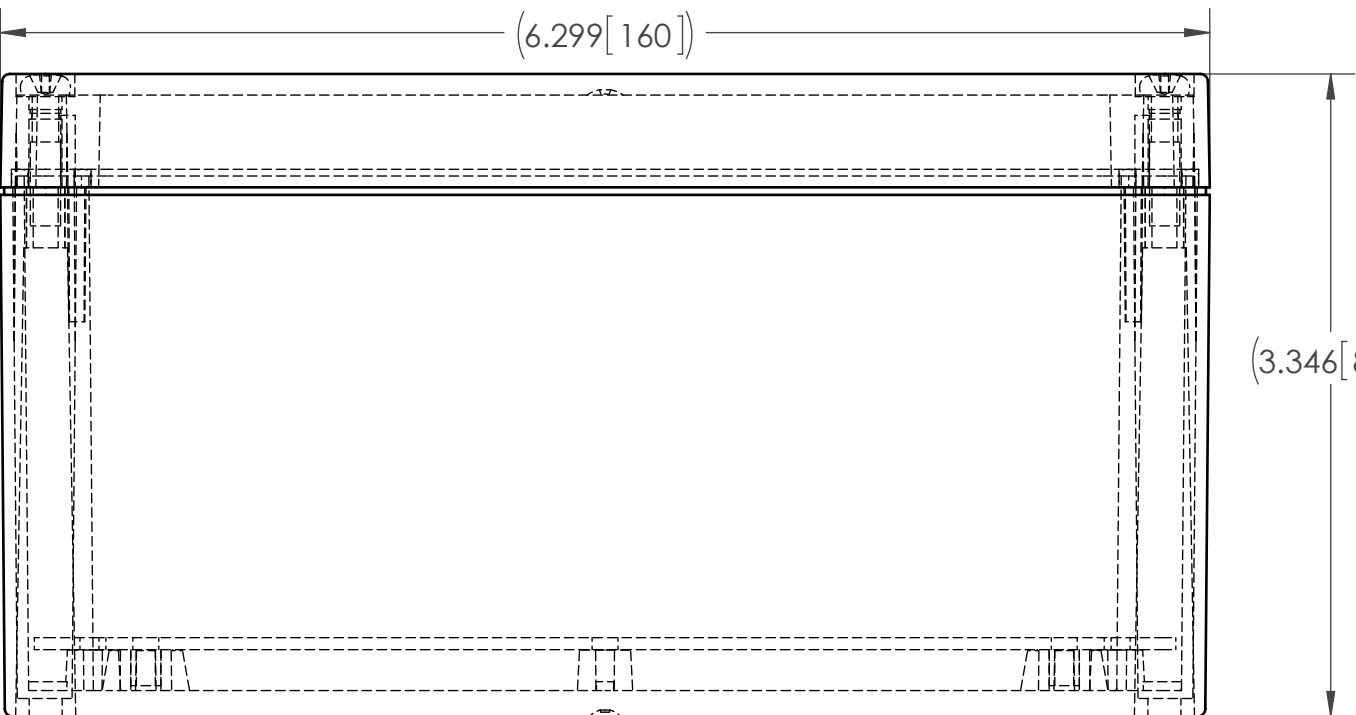
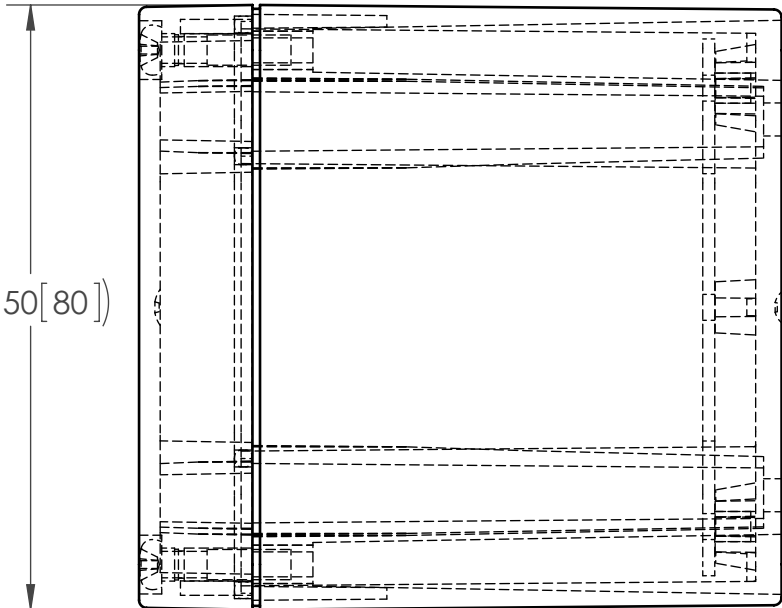
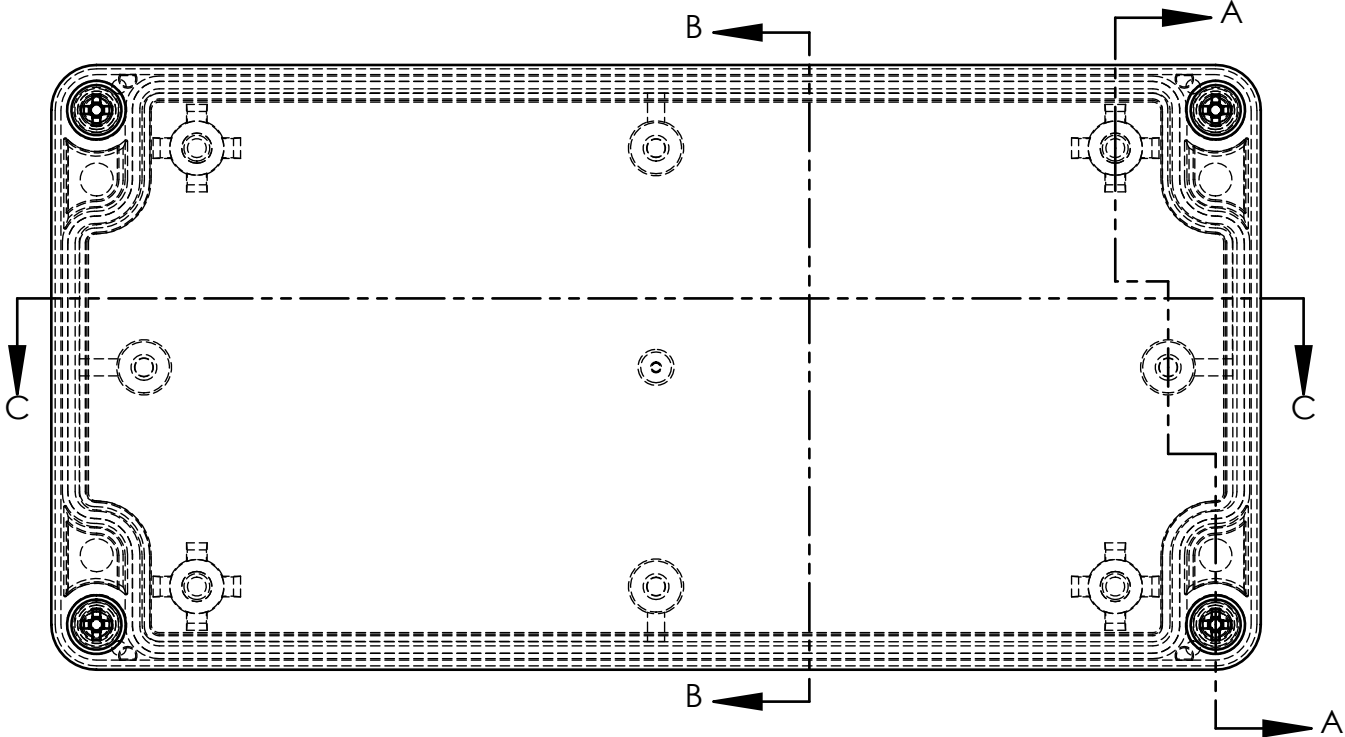
ITEM NO.	PART NUMBER	Rev.	DESCRIPTION	MATERIAL	FlameRating	Color	QTY.
1	WA-33B*16	-	WA BASE, W/MOUNTING BOSSSES	ABS	UL94-HB (UL FILE E56070)	DARK GRAY	1
2	WA-33C*16	-	WA COVER, W/GASKET	ABS	UL94-HB (UL FILE E56070)	DARK GRAY	1
3	SCREWS-SSM4-20-4	-	ASSEMBLY SCREWS, 4 PACK				1
3.1	SCREWS-SSM4-20	-	M4X0.7 X 20mm OAL, PHILLIPS DRIVE MACHINE SCREW	STAINLESS STEEL			4



SECTION C-C



SECTION A-A



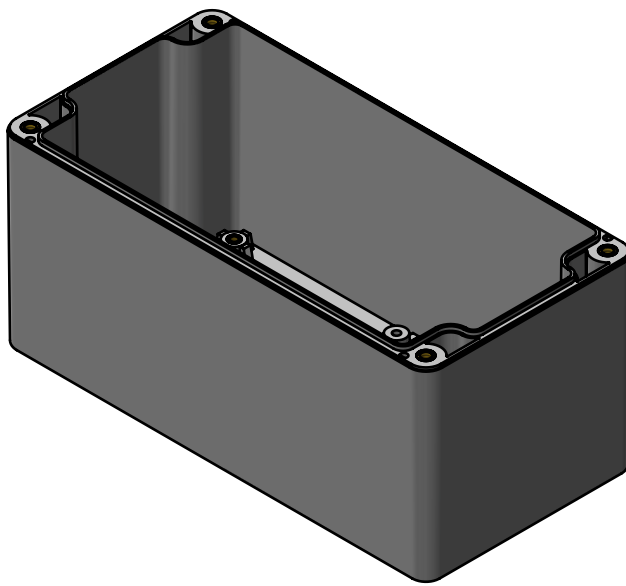
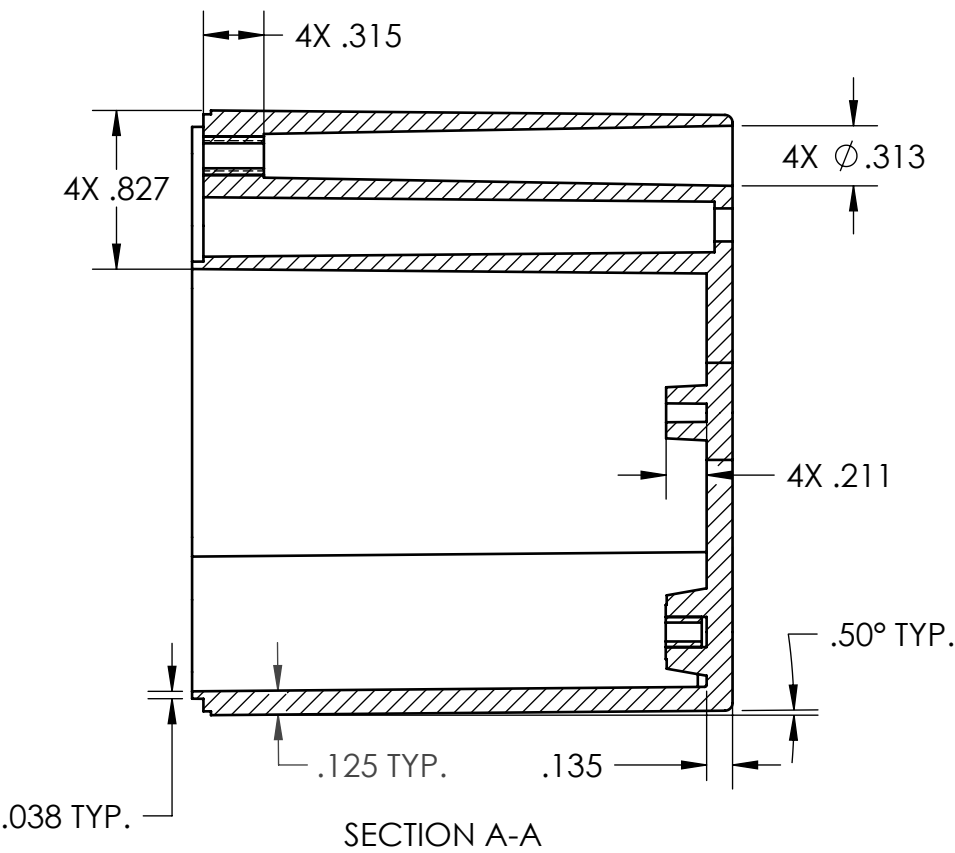
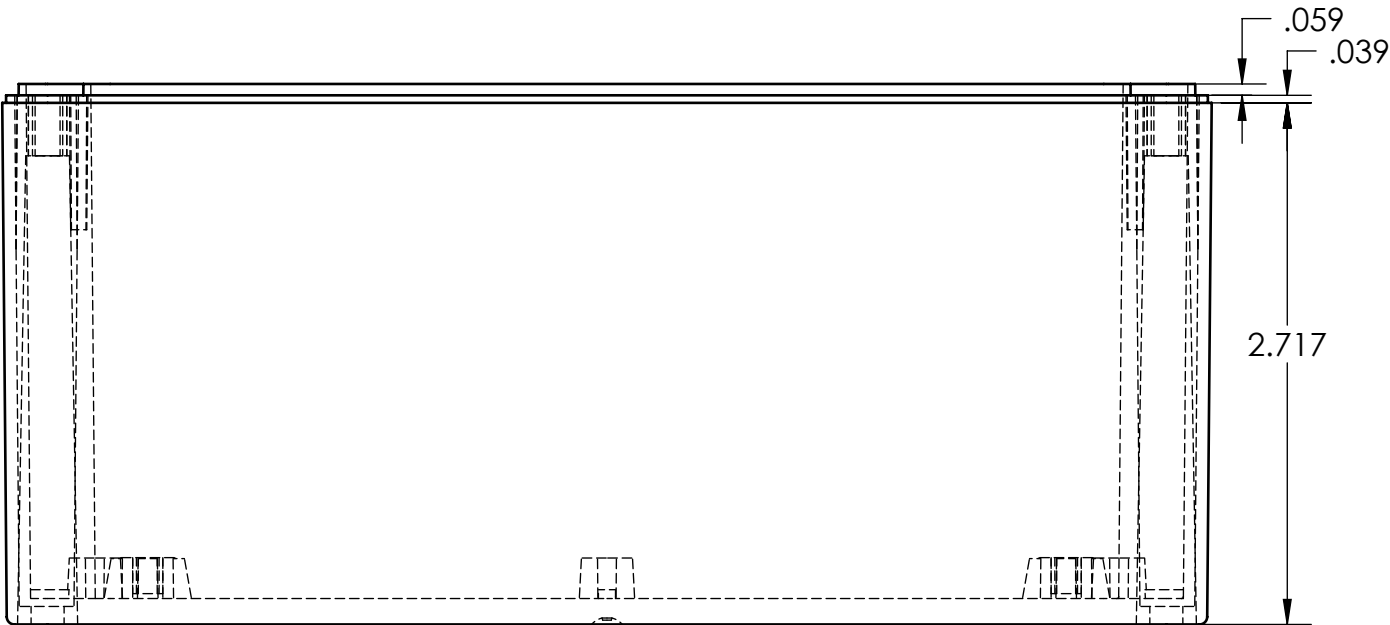
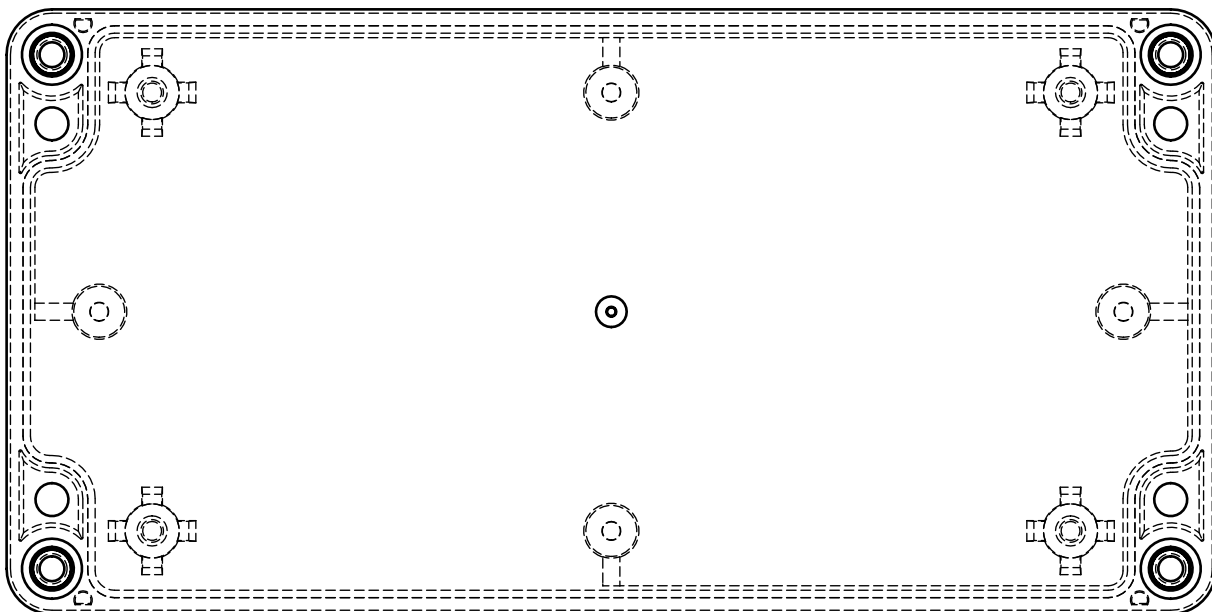
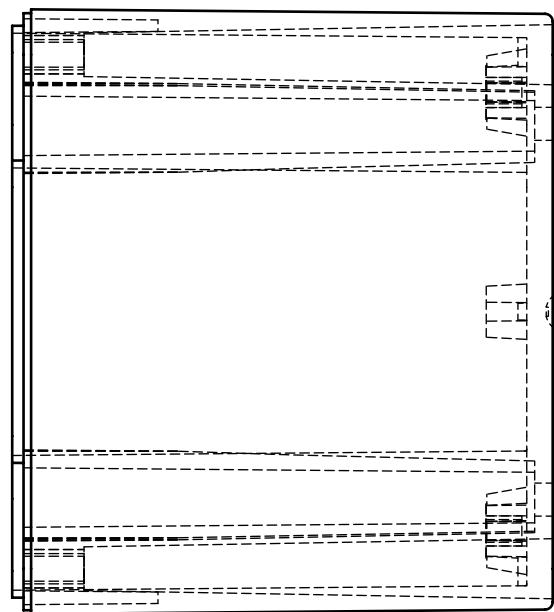
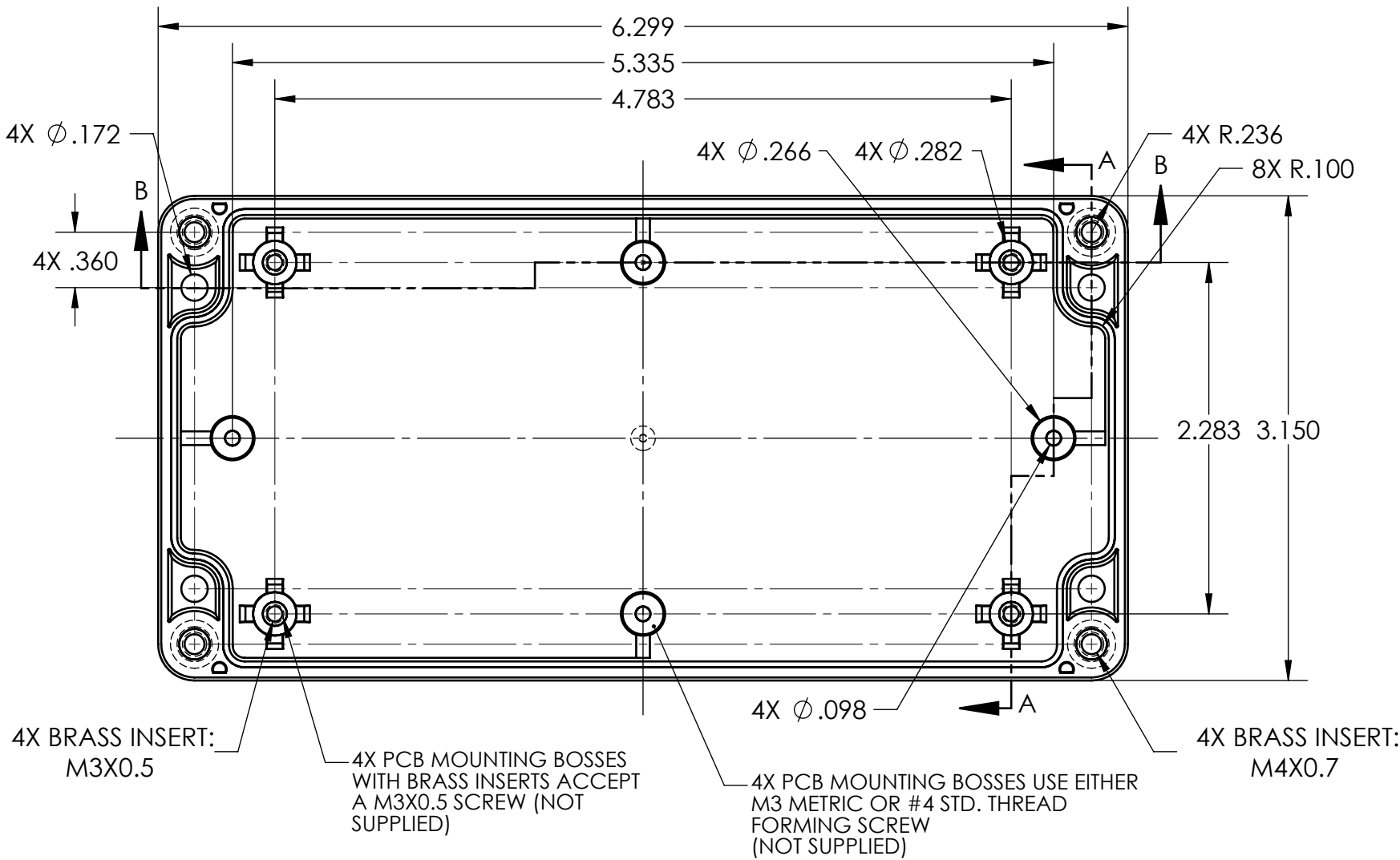
SECTION B-B

- NOTES:
- SERVICE TEMPERATURE RANGE: -40°C TO 80°C
 - DESIGNED TO NEMA 1, 2, 4, 4X, 12, 13
 - MOUNTING FLANGE KITS ARE AVAILABLE FROM POLYCASE.
 - UL LISTED TO UL508-4X SPECIFICATIONS (UL FILE #E194432).

UNLESS OTHERWISE SPECIFIED: DIMENSIONS ARE IN: INCHES[mm] TOLERANCES: ANGULAR: ±2° TWO PLACE DECIMAL: ±.030 THREE PLACE DECIMAL: ±.015 PRINTED GRAPHICS: ±.010		PART NO. WA-33*16 MATERIAL		<div>polycase</div> <div>1305 CHESTER RD. PARKWAY AVON, OHIO 44011-1083 U.S.A. PH: 1-800-248-1233 440-934-0444 FAX: 440-934-0088</div>							
PROPRIETARY AND CONFIDENTIAL THE INFORMATION CONTAINED IN THIS DRAWING IS THE SOLE PROPERTY OF POLYCASE. ANY REPRODUCTION IN PART OR AS A WHOLE WITHOUT THE WRITTEN PERMISSION OF POLYCASE IS PROHIBITED. CAD FILE: WA-33*16		FLAME RATING UL94-HB		SIZE C							
		<table><tr><td>NAME</td><td>DATE</td></tr><tr><td>D.M.F.</td><td>3/20/2013</td></tr><tr><td>C.C.B.</td><td>3/21/2013</td></tr></table>		NAME	DATE	D.M.F.	3/20/2013	C.C.B.	3/21/2013	Product Assembly Drawing	
NAME	DATE										
D.M.F.	3/20/2013										
C.C.B.	3/21/2013										
		SCALE: 1:1		REV -							
				SHEET 1 OF 1							


REV.	DESCRIPTION	ZONE	BY	APPR'D	DATE
REVISIONS					

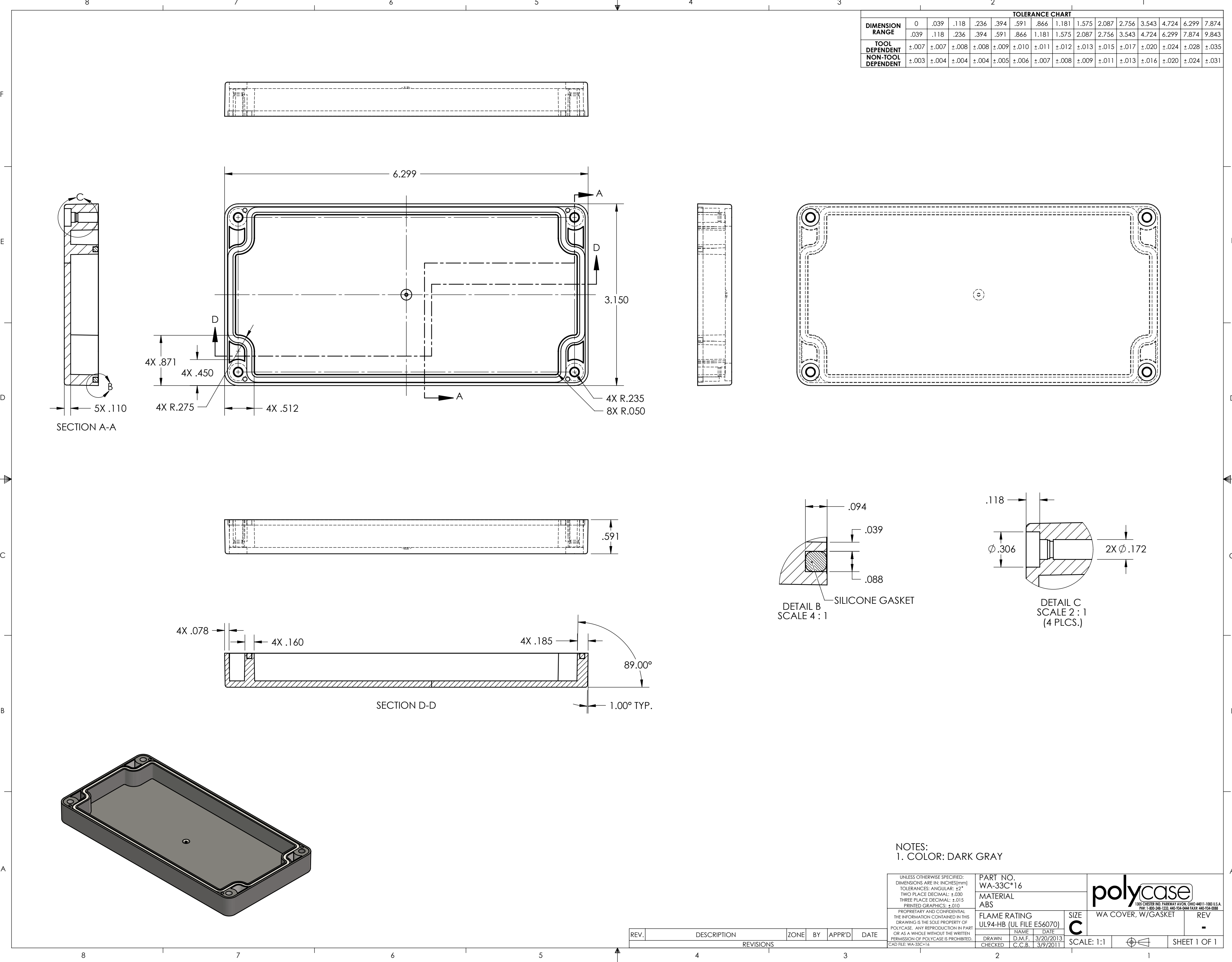
TOLERANCE CHART															
DIMENSION RANGE	0	.039	.118	.236	.394	.591	.866	1.181	1.575	2.087	2.756	3.543	4.724	6.299	7.874
	.039	.118	.236	.394	.591	.866	1.181	1.575	2.087	2.756	3.543	4.724	6.299	7.874	9.843
TOOL DEPENDENT	±.007	±.007	±.008	±.008	±.009	±.010	±.011	±.012	±.013	±.015	±.017	±.020	±.024	±.028	±.035
NON-TOOL DEPENDENT	±.003	±.004	±.004	±.004	±.005	±.006	±.007	±.008	±.009	±.011	±.013	±.016	±.020	±.024	±.031



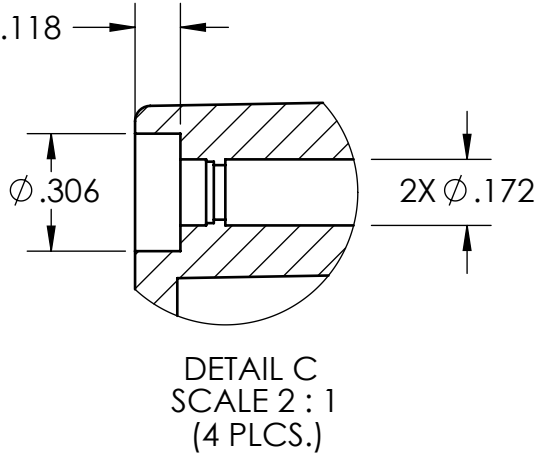
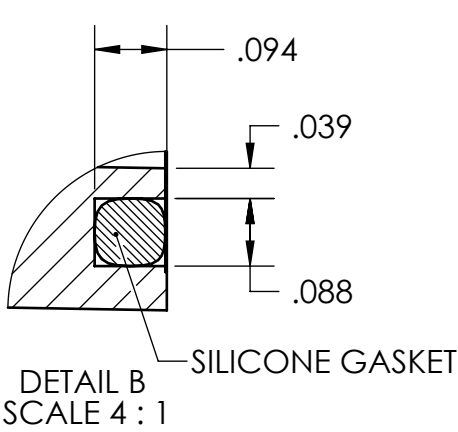
NOTES:
1. COLOR: DARK GRAY

REV.	DESCRIPTION	ZONE	BY	APPR'D	DATE
REVISIONS					


UNLESS OTHERWISE SPECIFIED: DIMENSIONS ARE IN: INCHES[mm] TOLERANCES: ANGULAR: ±2° TWO PLACE DECIMAL: ± THREE PLACE DECIMAL: ± PRINTED GRAPHICS: ±.010 PROPRIETARY AND CONFIDENTIAL THE INFORMATION CONTAINED IN THIS DRAWING IS THE SOLE PROPERTY OF POLYCASE. ANY REPRODUCTION IN PART OR AS A WHOLE WITHOUT THE WRITTEN PERMISSION OF POLYCASE IS PROHIBITED. CAD FILE: WA-338*16	PART NO. WA-338*16		<div>polycase</div> <div>1305 CHESTER RD. PARKWAY AVON, OHIO 44011-1083 U.S.A. PH: 1-800-248-1233, 440-934-0444 FAX: 440-934-0088</div>		
	MATERIAL ABS				
	FLAME RATING UL94-HB (UL FILE E56070)		SIZE C	WA BASE, W/MOUNTING BOSSES	REV -
	DRAWN CHECKED	D.M.F. C.C.B.	3/20/2013 3/21/2013	SCALE: 1:1	

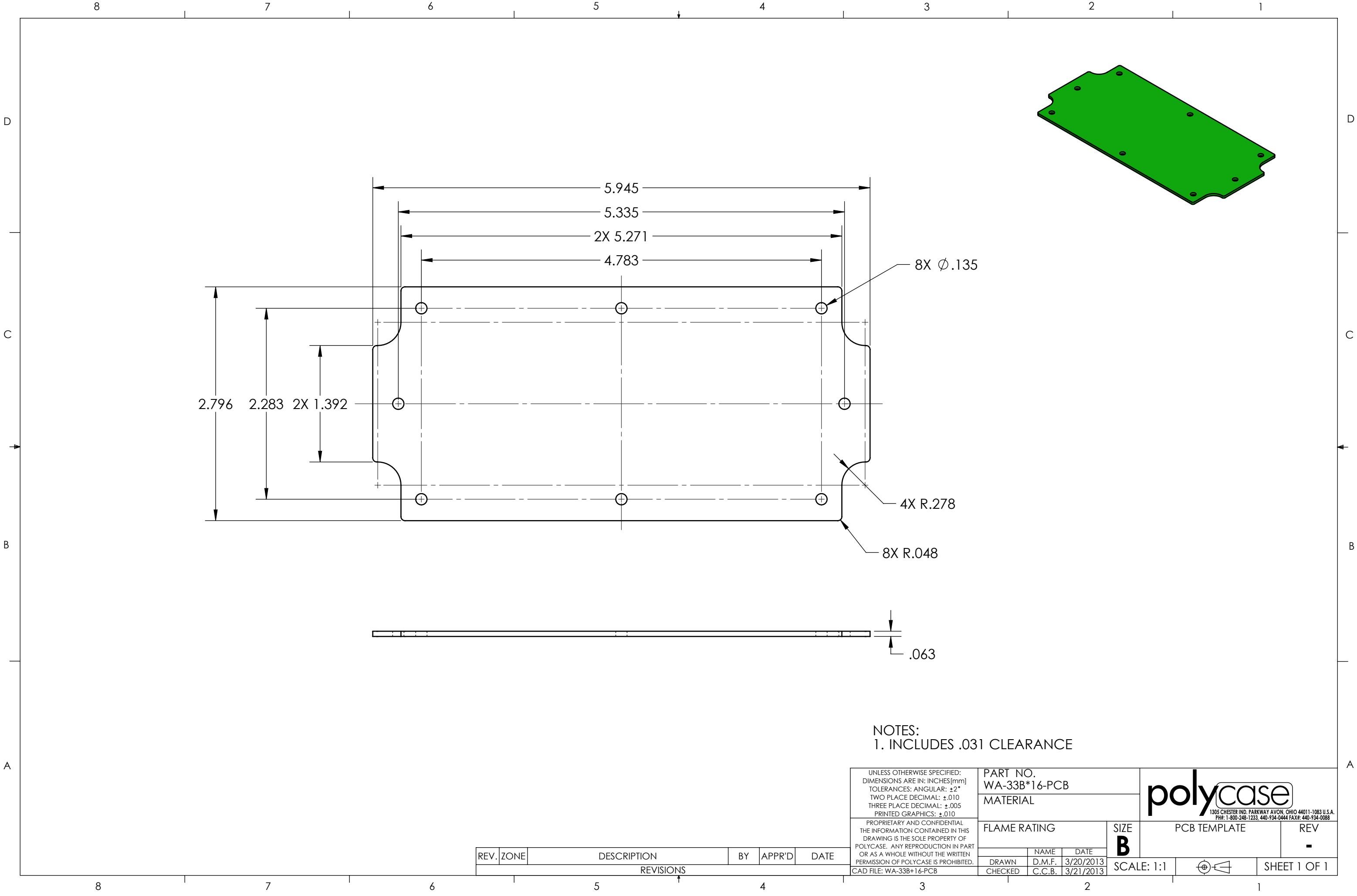


TOLERANCE CHART															
DIMENSION RANGE	0	.039	.118	.236	.394	.591	.866	1.181	1.575	2.087	2.756	3.543	4.724	6.299	7.874
	.039	.118	.236	.394	.591	.866	1.181	1.575	2.087	2.756	3.543	4.724	6.299	7.874	9.843
TOOL DEPENDENT	±.007	±.007	±.008	±.008	±.009	±.010	±.011	±.012	±.013	±.015	±.017	±.020	±.024	±.028	±.035
NON-TOOL DEPENDENT	±.003	±.004	±.004	±.004	±.005	±.006	±.007	±.008	±.009	±.011	±.013	±.016	±.020	±.024	±.031




NOTES:
1. COLOR: DARK GRAY

<div>UNLESS OTHERWISE SPECIFIED: DIMENSIONS ARE IN: INCHES[mm] TOLERANCES: ANGULAR: ±2° TWO PLACE DECIMAL: ±.030 THREE PLACE DECIMAL: ±.015 PRINTED GRAPHICS: ±.010 PROPRIETARY AND CONFIDENTIAL THE INFORMATION CONTAINED IN THIS DRAWING IS THE SOLE PROPERTY OF POLYCASE. ANY REPRODUCTION IN PART OR AS A WHOLE WITHOUT THE WRITTEN PERMISSION OF POLYCASE IS PROHIBITED. CAD FILE: WA-33C*16</div>		PART NO. WA-33C*16		<div><div>polycase</div><div>1305 CHESTER RD. PARKWAY AVON, OHIO 44011-1083 U.S.A. PH: 1-800-248-1233 440-934-0444 FAX: 440-934-0088</div></div>		WA COVER, W/GASKET		REV					
		MATERIAL ABS				FLAME RATING UL94-HB (UL FILE E56070)		-					
		DRAWN		NAME		DATE		SCALE: 1:1				SHEET 1 OF 1	
		CHECKED		D.M.F.		3/20/2013							



NOTES:
1. INCLUDES .031 CLEARANCE

UNLESS OTHERWISE SPECIFIED: DIMENSIONS ARE IN: INCHES[mm] TOLERANCES: ANGULAR: ±2° TWO PLACE DECIMAL: ±.010 THREE PLACE DECIMAL: ±.005 PRINTED GRAPHICS: ±.010	PART NO. WA-33B*16-PCB		<div><div>polycase</div><div>1305 CHESTER IND. PARKWAY AVON, OHIO 44011-1083 U.S.A. PH#: 1-800-248-1233, 440-934-0444 FAX#: 440-934-0088</div></div>			
	MATERIAL					
PROPRIETARY AND CONFIDENTIAL THE INFORMATION CONTAINED IN THIS DRAWING IS THE SOLE PROPERTY OF POLYCASE. ANY REPRODUCTION IN PART OR AS A WHOLE WITHOUT THE WRITTEN PERMISSION OF POLYCASE IS PROHIBITED. CAD FILE: WA-33B*16-PCB	FLAME RATING		SIZE B	PCB TEMPLATE		REV -
		NAME	DATE			
	DRAWN	D.M.F.	3/20/2013			
	CHECKED	C.C.B.	3/21/2013	SCALE: 1:1		SHEET 1 OF 1

REV.	ZONE	DESCRIPTION	BY	APPR'D	DATE
REVISIONS					