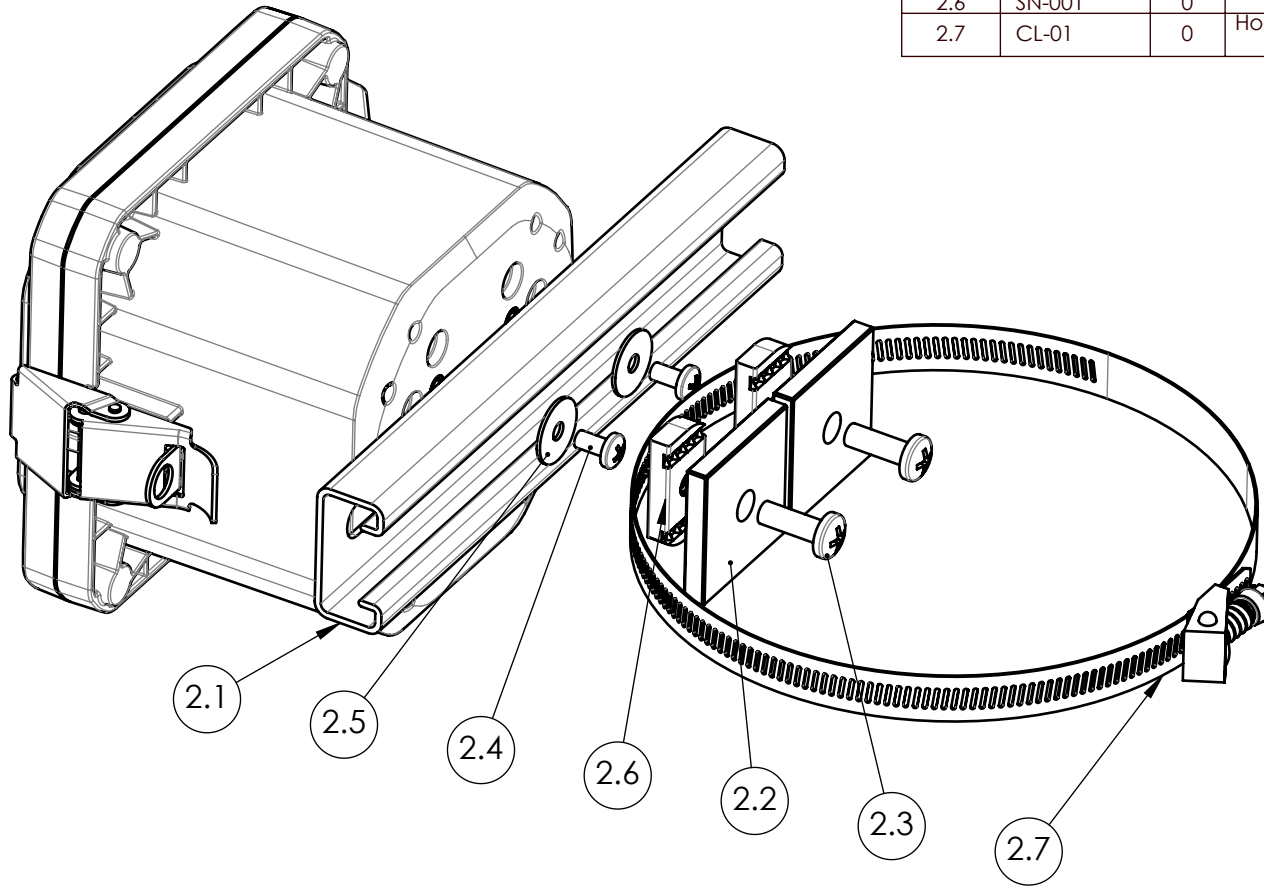



ZH/ZQ POLE MOUNT INSTALL

BOM Table					
ITEM NO.	PART NUMBER	Rev.	Description	Material	QTY.
1	ZH-xxxx-01	0	HINGED ENCLOSURE		1
2	PK-XXX	0	POLE MOUNT KIT		1
2.1	SC-080	0	Strut Channel P4100SLPG	PRE-GALV STEEL	1
2.2	SW-001	0	Strut Channel Washer 1/4	304 SST	2
2.3	SCREWS-031	0	1/4-20 X .75 PAN HEAD, PHILLIPS, SS	SST	2
2.4	SCREWS-049	0	10-32 X 3/8 PHILIPS, PAN, SST	SST	2
2.5	W-002		FENDER WASHER #10 X .734 X .04	SST	2
2.6	SN-001	0	Strut Channel NUT 1/4-20	316 SST	2
2.7	CL-01	0	Hose Clamp, 2" to 12.25" ID, 30 in.-lbs. Max Torque	201 SST, ZINC SCREW	1



UNLESS OTHERWISE SPECIFIED: DIMENSIONS ARE IN: INCHES[mm] TOLERANCES: ANGULAR: ±2° TWO PLACE DECIMAL: ±.010 THREE PLACE DECIMAL: ±.005 PRINTED GRAPHICS: ±.010	PART NO. ZH-PK-INST-01		 <small>1305 CHESTER IND. PARKWAY AVON, OHIO 44011-1083 U.S.A. PH#: 1-800-248-1233, 440-934-0444 FAX#: 440-934-0088</small>	
	MATERIAL			
PROPRIETARY AND CONFIDENTIAL THE INFORMATION CONTAINED IN THIS DRAWING IS THE SOLE PROPERTY OF POLYCASE. ANY REPRODUCTION IN PART OR AS A WHOLE WITHOUT THE WRITTEN PERMISSION OF POLYCASE IS PROHIBITED. CAD FILE: ZH-PK-INST-01	FLAME RATING	SIZE A	ENCLOSURE W/POLE MOUNT KIT	
	REV.	NAME D.M.F.	DATE 2/15/2022	REV 0
REVISIONS		DRAWN CHECKED	DATE 2/15/2022	SCALE: 1:2

REV.	DESCRIPTION	ZONE	BY	APPR'D	DATE

5

4

3

2

1

SHEET 1 OF 1