

BOM Table					
ITEM NO.	PART NUMBER	Rev.	Description	Material	Default/QTY.
1	ZH-121206-01	0	HINGED ENCLOSURE		1
2	PK-126	0	POLE MOUNT KIT		1
2.1	SC-120	0	Strut Channel P4100SLPG	PRE-GALV STEEL	2
2.2	SW-001	0	Strut Channel Washer 1/4	304 SST	4
2.3	SCREWS-031		1/4-20 X .75 PAN HEAD, PHILLIPS, SS	SST	4
2.4	SCREWS-049	0	10-32 X 3/8 PHILIPS, PAN, SST	SST	4
2.5	W-002		FENDER WASHER #10 X .734 X .04	SST	4
2.6	SN-001	0	Strut Channel NUT 1/4-20	316 SST	4
2.7	CL-01	0	Hose Clamp, 2" to 12.25" ID, 30 in.-lbs. Max Torque	201 SST, ZINC SCREW	2

REV.	DESCRIPTION	ZONE	BY	APPR'D	DATE
	REVISIONS				

UNLESS OTHERWISE SPECIFIED:  
DIMENSIONS ARE IN: INCHES [mm]  
TOLERANCES: ANGULAR: ±2°  
TWO PLACE DECIMAL: ±.010  
THREE PLACE DECIMAL: ±.005  
PRINTED GRAPHICS: ±.010

PROPRIETARY AND CONFIDENTIAL  
THE INFORMATION CONTAINED IN THIS  
DRAWING IS THE SOLE PROPERTY OF  
POLYCASE. ANY REPRODUCTION IN PART  
OR AS A WHOLE WITHOUT THE WRITTEN  
PERMISSION OF POLYCASE IS PROHIBITED.  
CAD FILE: Z\_-1212xx-PK

PART NO.  
Z\_-1212xx-PK

MATERIAL

FLAME RATING

DRAWN  
CHECKED

NAME  
D.M.F.  
-

DATE  
12/7/2022  
12/31/2999

SIZE  
B

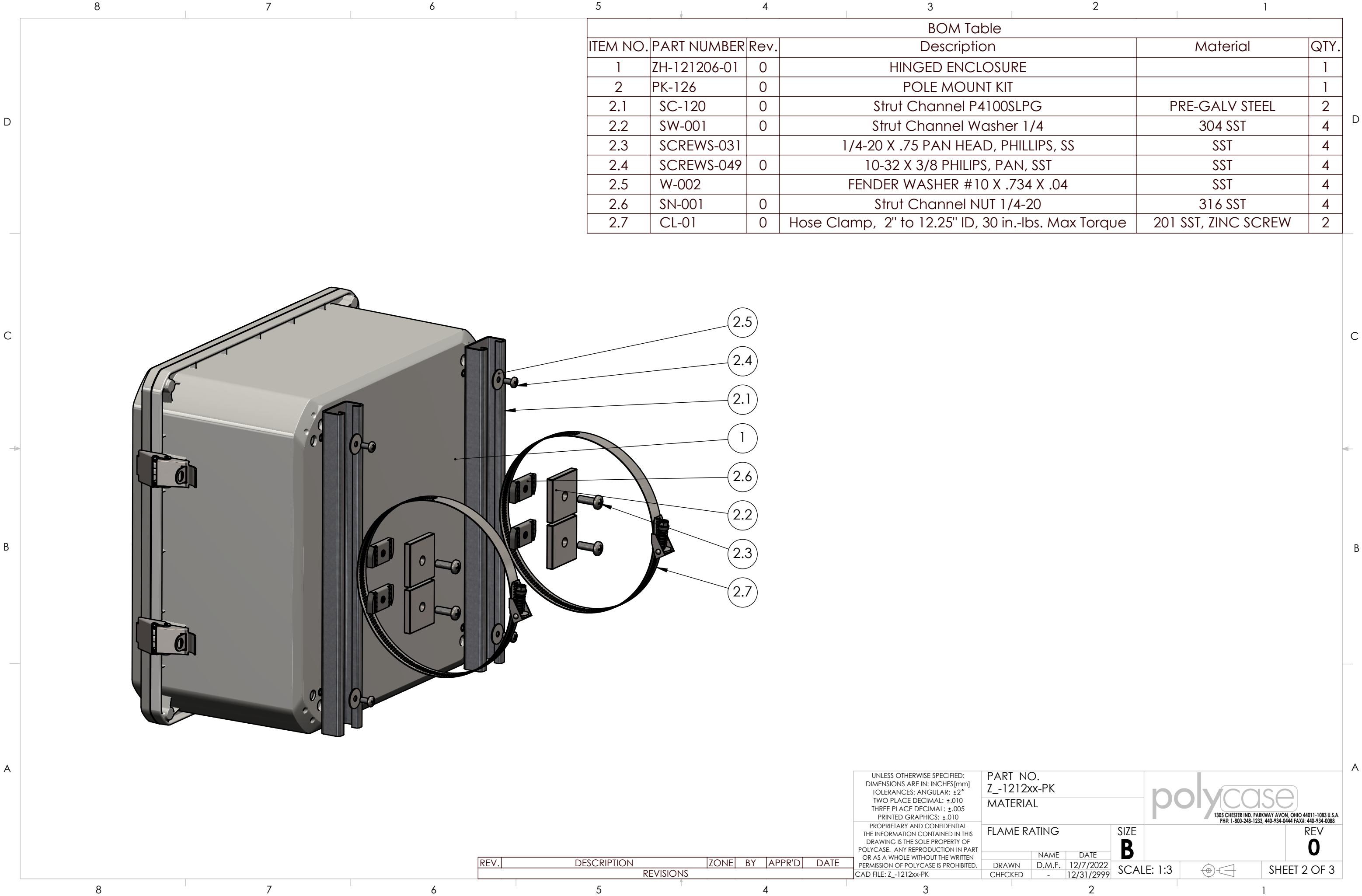
SCALE: 1:3

1305 CHESTER IND. PARKWAY AVON, OHIO 44011-1083 U.S.A.  
PH#: 1-800-248-1233, 440-934-0444 FAX#: 440-934-0088

ENCLOSURE W/POLE  
MOUNT KIT

REV  
0

SHEET 1 OF 3



BOM Table					
ITEM NO.	PART NUMBER	Rev.	Description	Material	QTY.
1	ZH-121206-01	0	HINGED ENCLOSURE		1
2	PK-126	0	POLE MOUNT KIT		1
2.1	SC-120	0	Strut Channel P4100SLPG	PRE-GALV STEEL	2
2.2	SW-001	0	Strut Channel Washer 1/4	304 SST	4
2.3	SCREWS-031		1/4-20 X .75 PAN HEAD, PHILLIPS, SS	SST	4
2.4	SCREWS-049	0	10-32 X 3/8 PHILIPS, PAN, SST	SST	4
2.5	W-002		FENDER WASHER #10 X .734 X .04	SST	4
2.6	SN-001	0	Strut Channel NUT 1/4-20	316 SST	4
2.7	CL-01	0	Hose Clamp, 2" to 12.25" ID, 30 in.-lbs. Max Torque	201 SST, ZINC SCREW	2

REV.	DESCRIPTION	ZONE	BY	APPR'D	DATE
REVISIONS					

UNLESS OTHERWISE SPECIFIED:  
DIMENSIONS ARE IN: INCHES [mm]  
TOLERANCES: ANGULAR: ±2°  
TWO PLACE DECIMAL: ±.010  
THREE PLACE DECIMAL: ±.005  
PRINTED GRAPHICS: ±.010

PROPRIETARY AND CONFIDENTIAL  
THE INFORMATION CONTAINED IN THIS  
DRAWING IS THE SOLE PROPERTY OF  
POLYCASE. ANY REPRODUCTION IN PART  
OR AS A WHOLE WITHOUT THE WRITTEN  
PERMISSION OF POLYCASE IS PROHIBITED.  
CAD FILE: Z\_-1212xx-PK

PART NO.  
Z\_-1212xx-PK

MATERIAL

FLAME RATING

DRAWN  
CHECKED

NAME  
D.M.F.  
-

DATE  
12/7/2022  
12/31/2999

polycase

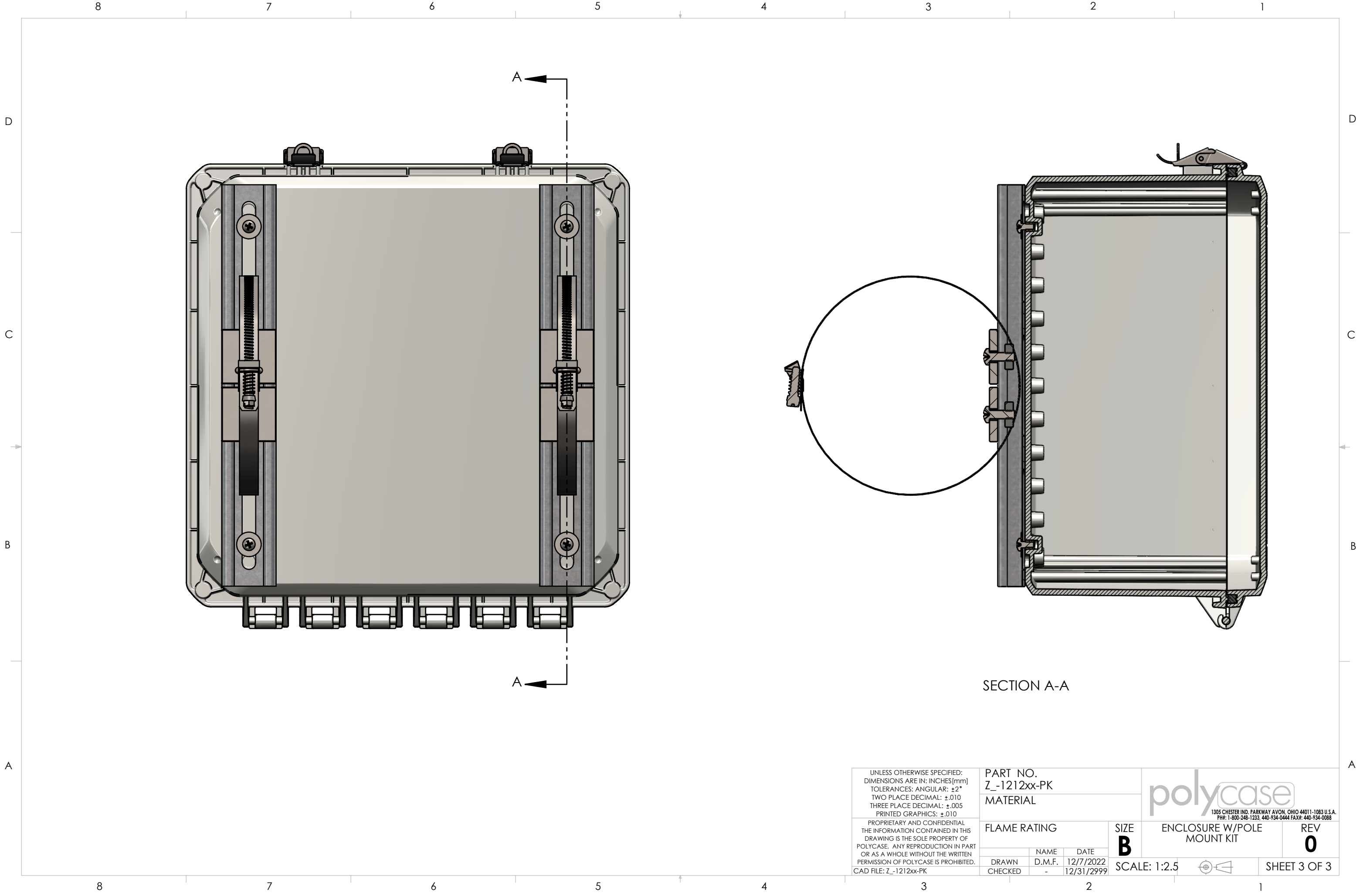
1305 CHESTER IND. PARKWAY AVON, OHIO 44011-1083 U.S.A.  
PH#: 1-800-248-1233, 440-934-0444 FAX#: 440-934-0088

REV  
0


SIZE  
B

SCALE: 1:3

SHEET 2 OF 3



SECTION A-A

UNLESS OTHERWISE SPECIFIED: DIMENSIONS ARE IN: INCHES[mm] TOLERANCES: ANGULAR: ±2° TWO PLACE DECIMAL: ±.010 THREE PLACE DECIMAL: ±.005 PRINTED GRAPHICS: ±.010	PART NO. Z-1212xx-PK		<div></div> <div>1305 CHESTER IND. PARKWAY AVON, OHIO 44011-1083 U.S.A. PH#: 1-800-248-1233, 440-934-0444 FAX#: 440-934-0088</div>		
	MATERIAL				
PROPRIETARY AND CONFIDENTIAL THE INFORMATION CONTAINED IN THIS DRAWING IS THE SOLE PROPERTY OF POLYCASE. ANY REPRODUCTION IN PART OR AS A WHOLE WITHOUT THE WRITTEN PERMISSION OF POLYCASE IS PROHIBITED.  CAD FILE: Z_-1212xx-PK	FLAME RATING		SIZE <b>B</b>	ENCLOSURE W/POLE MOUNT KIT	REV <b>0</b>
		NAME	DATE		
	DRAWN	D.M.F.	12/7/2022		
	CHECKED	-	12/31/2999	SCALE: 1:2.5	