

BOM Table					
ITEM NO.	PART NUMBER	Rev.	Description	Material	QTY.
1	ZH-100806-01	-	HINGED ENCLOSURE		1
2	PK-087	-.03	POLE MOUNT KIT		1
2.1	SC-080	-.01	Strut Channel P4100SLPG	PRE-GALV STEEL	2
2.2	SW-001	-	Strut Channel Washer 1/4	304 SST	4
2.3	SCREWS-031		CR PHMS 0.25-20x0.75	SST	4
2.4	SCREWS-049		10-32 X 3/8 PHILIPS, PAN, SST	SST	4
2.5	W-002		WASHER #10 X .734 X .04	SST	4
2.6	SN-001	-	Strut Channel NUT 1/4-20	316 SST	4
2.7	CL-01	1	Hose Clamp, 2" to 12.25" ID, 30 in.-lbs. Max Torque	201 SST, ZINC SCREW	2

-.01	FIXED BOM CONFIG LINK		D.M.F.		2/4/2020
REV.	DESCRIPTION	ZONE	BY	APPR'D	DATE
REVISIONS					

UNLESS OTHERWISE SPECIFIED:  
DIMENSIONS ARE IN: INCHES [mm]  
TOLERANCES: ANGULAR: ±2°  
TWO PLACE DECIMAL: ±.010  
THREE PLACE DECIMAL: ±.005  
PRINTED GRAPHICS: ±.010

PROPRIETARY AND CONFIDENTIAL  
THE INFORMATION CONTAINED IN THIS  
DRAWING IS THE SOLE PROPERTY OF  
POLYCASE. ANY REPRODUCTION IN PART  
OR AS A WHOLE WITHOUT THE WRITTEN  
PERMISSION OF POLYCASE IS PROHIBITED.  
CAD FILE: Z\_-10080x-PK

PART NO.  
Z\_-10080x-PK

MATERIAL

FLAME RATING

DRAWN  
CHECKED

NAME  
B.M.B.

DATE  
1/16/2020

SIZE  
B

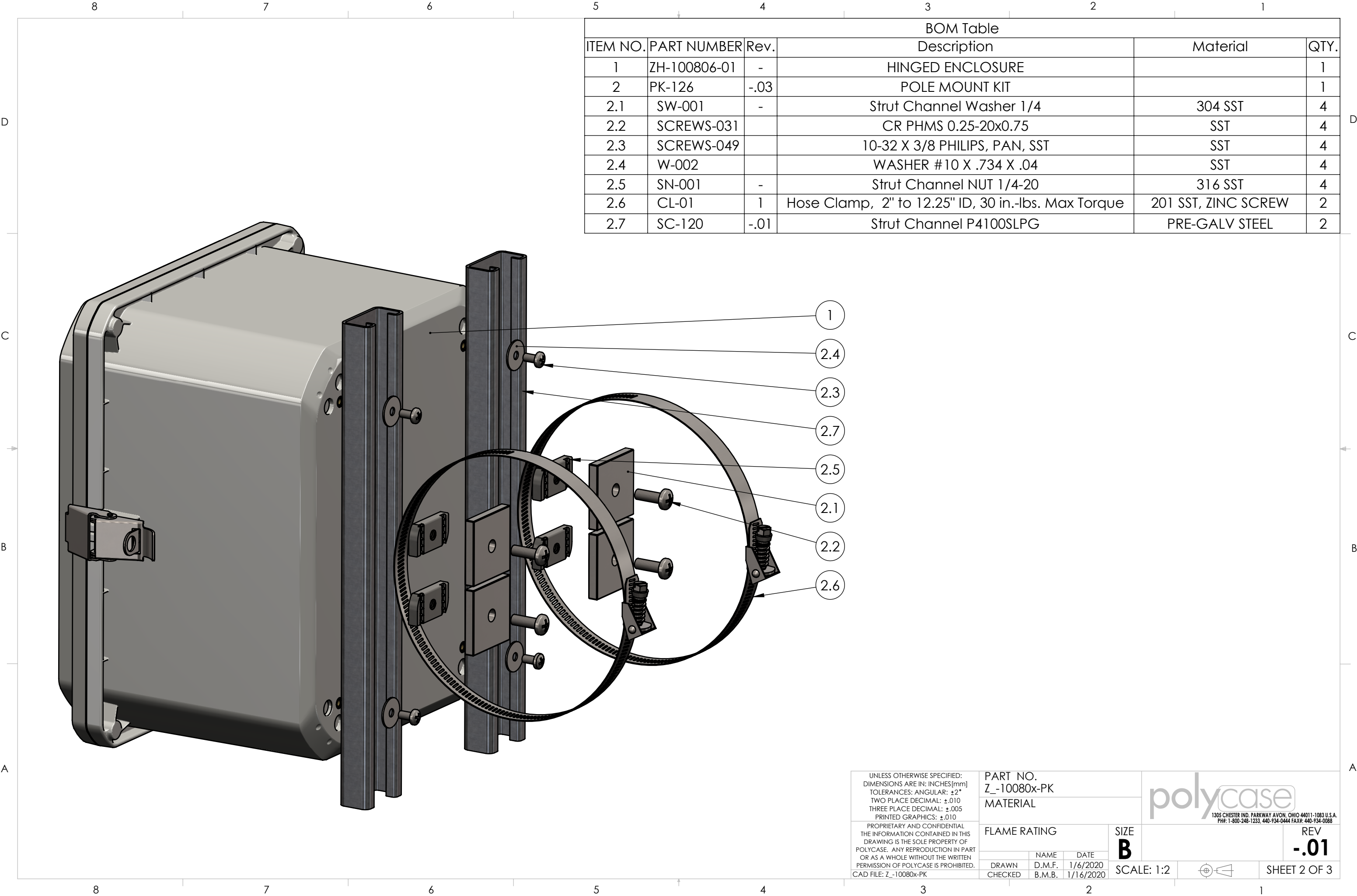
SCALE: 1:2

1305 CHESTER IND. PARKWAY AVON, OHIO 44011-1083 U.S.A.  
PH#: 1-800-248-1233, 440-934-0444 FAX#: 440-934-0088

ENCLOSURE W/POLE  
MOUNT KIT

REV  
-.01

SHEET 1 OF 3



BOM Table					
ITEM NO.	PART NUMBER	Rev.	Description	Material	QTY.
1	ZH-100806-01	-	HINGED ENCLOSURE		1
2	PK-126	-.03	POLE MOUNT KIT		1
2.1	SW-001	-	Strut Channel Washer 1/4	304 SST	4
2.2	SCREWS-031		CR PHMS 0.25-20x0.75	SST	4
2.3	SCREWS-049		10-32 X 3/8 PHILIPS, PAN, SST	SST	4
2.4	W-002		WASHER #10 X .734 X .04	SST	4
2.5	SN-001	-	Strut Channel NUT 1/4-20	316 SST	4
2.6	CL-01	1	Hose Clamp, 2" to 12.25" ID, 30 in.-lbs. Max Torque	201 SST, ZINC SCREW	2
2.7	SC-120	-.01	Strut Channel P4100SLPG	PRE-GALV STEEL	2

UNLESS OTHERWISE SPECIFIED:  
DIMENSIONS ARE IN: INCHES [mm]  
TOLERANCES: ANGULAR: ±2°  
TWO PLACE DECIMAL: ±.010  
THREE PLACE DECIMAL: ±.005  
PRINTED GRAPHICS: ±.010

PROPRIETARY AND CONFIDENTIAL  
THE INFORMATION CONTAINED IN THIS  
DRAWING IS THE SOLE PROPERTY OF  
POLYCASE. ANY REPRODUCTION IN PART  
OR AS A WHOLE WITHOUT THE WRITTEN  
PERMISSION OF POLYCASE IS PROHIBITED.  
CAD FILE: Z\_-10080x-PK

PART NO.  
Z\_-10080x-PK

MATERIAL

FLAME RATING

SIZE  
**B**

DRAWN  
CHECKED

NAME  
D.M.F.  
B.M.B.

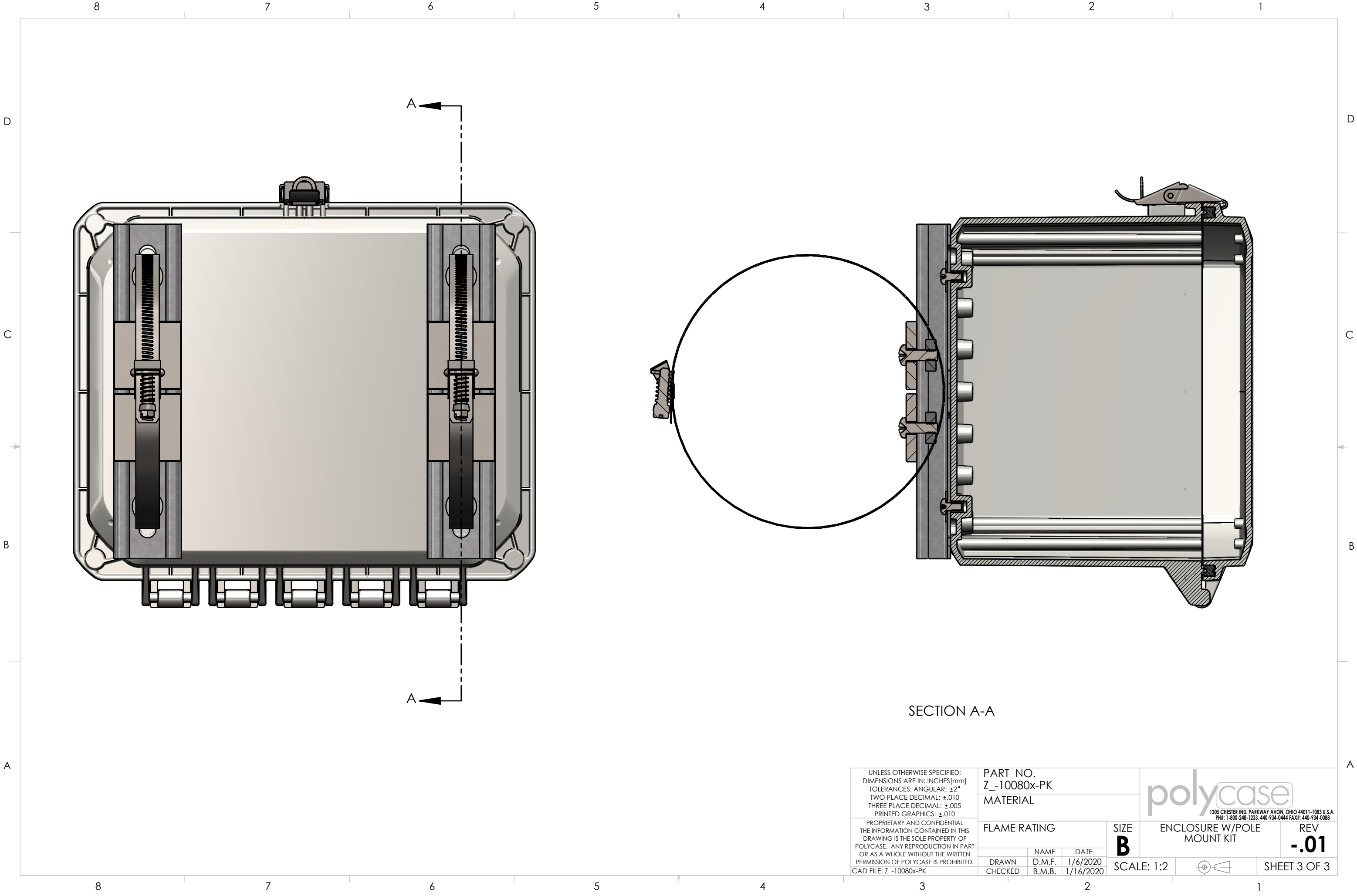
DATE  
1/6/2020  
1/16/2020

1305 CHESTER IND. PARKWAY AVON, OHIO 44011-1083 U.S.A.  
PH#: 1-800-248-1233, 440-934-0444 FAX#: 440-934-0088


REV  
**-.01**

SCALE: 1:2

SHEET 2 OF 3



SECTION A-A

UNLESS OTHERWISE SPECIFIED: DIMENSIONS ARE IN: INCHES[mm] TOLERANCES: ANGULAR: ±2° TWO PLACE DECIMAL: ±.010 THREE PLACE DECIMAL: ±.005 PRINTED GRAPHICS: ±.010	PART NO. Z-10080x-PK		<div>polycase</div> <div>1305 CHESTER IND. PARKWAY AVON, OHIO 44011-1083 U.S.A. PH#: 1-800-248-1233, 440-934-0444 FAX#: 440-934-0088</div>			
	MATERIAL					
PROPRIETARY AND CONFIDENTIAL THE INFORMATION CONTAINED IN THIS DRAWING IS THE SOLE PROPERTY OF POLYCASE. ANY REPRODUCTION IN PART OR AS A WHOLE WITHOUT THE WRITTEN PERMISSION OF POLYCASE IS PROHIBITED.  CAD FILE: Z_-10080x-PK	FLAME RATING		SIZE <b>B</b>	ENCLOSURE W/POLE MOUNT KIT		REV <b>-.01</b>
		NAME	DATE			
	DRAWN	D.M.F.	1/6/2020			
	CHECKED	B.M.B.	1/16/2020	SCALE: 1:2		SHEET 3 OF 3