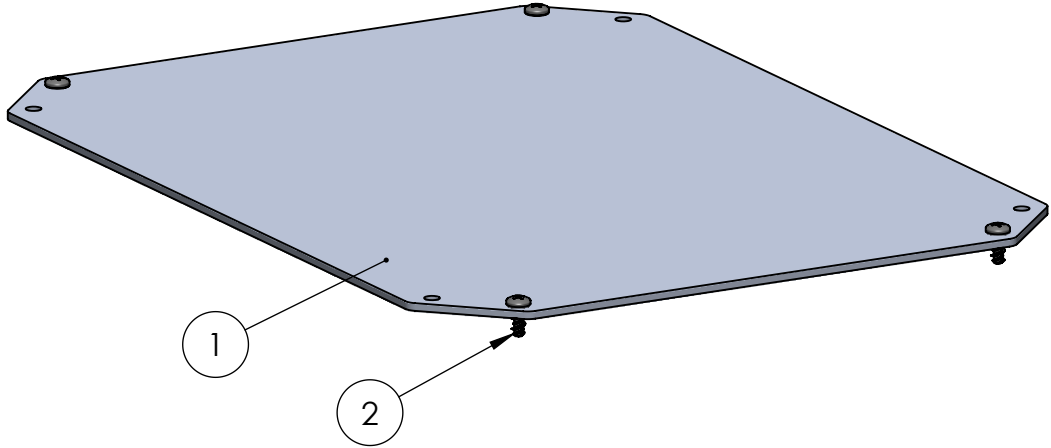
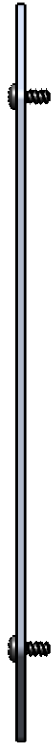


BOM Table					
ITEM NO.	PART NUMBER	Rev.	Description	Material	QTY.
1	ZX-0806P-03	-	TOP BASE/COVER PANEL	AL 5052-H32	1
2	SCREWS-MBR	-.01	#4-24 HI-LO X .25 THREAD FORMING, PHILLIPS, PAN HEAD, SCREW	AISI 1019-1022	4



1	UPDATED SCREW QTY		D.M.F.	D.M.F.	5/14/2020
-	PRODUCTION RELEASE		D.M.F.	D.M.F.	5/13/2020
REV.	DESCRIPTION	ZONE	BY	APPR'D	DATE
REVISIONS					

UNLESS OTHERWISE SPECIFIED:
DIMENSIONS ARE IN: INCHES [mm]
TOLERANCES: ANGULAR: $\pm 2^{\circ}$
TWO PLACE DECIMAL: $\pm .010$
THREE PLACE DECIMAL: $\pm .005$
PRINTED GRAPHICS: $\pm .010$

PROPRIETARY AND CONFIDENTIAL
THE INFORMATION CONTAINED IN THIS
DRAWING IS THE SOLE PROPERTY OF
POLYCASE. ANY REPRODUCTION IN PART
OR AS A WHOLE WITHOUT THE WRITTEN
PERMISSION OF POLYCASE IS PROHIBITED.
CAD FILE: ZX-0806K-03

PART NO.
ZX-0806K-03

MATERIAL

FLAME RATING

DRAWN
CHECKED

NAME
D.M.F.
-

DATE
6/12/2019
12/31/2999

SIZE
B

SCALE: 1:1.5

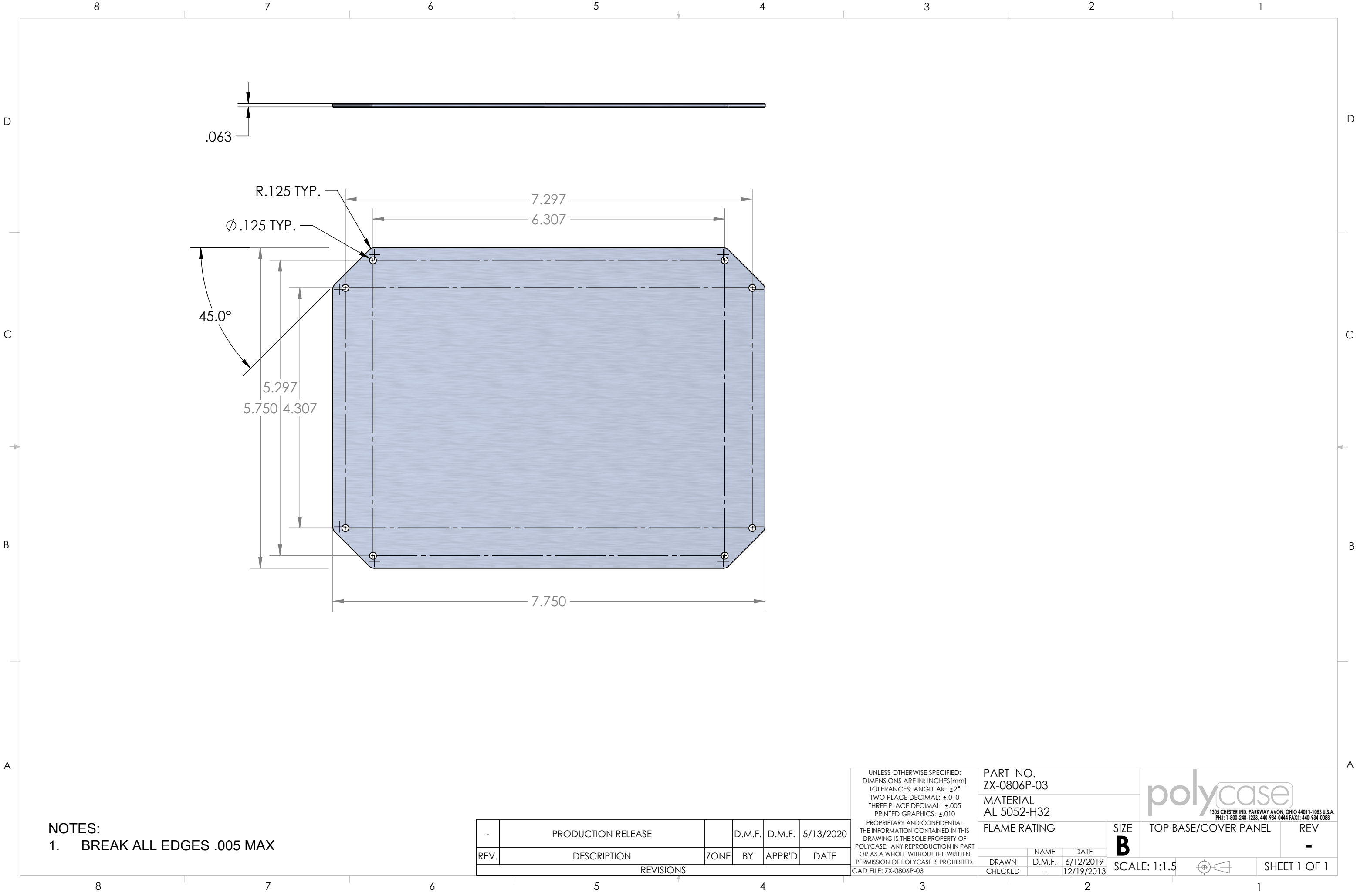
1305 CHESTER IND. PARKWAY AVON, OHIO 44011-1083 U.S.A.
PH#: 1-800-248-1233, 440-934-0444 FAX#: 440-934-0088

polycase

TOP BASE/COVER PANEL KIT

REV
1

SHEET 1 OF 1



NOTES:
1. BREAK ALL EDGES .005 MAX

-	PRODUCTION RELEASE		D.M.F.	D.M.F.	5/13/2020
REV.	DESCRIPTION	ZONE	BY	APPR'D	DATE
REVISIONS					

UNLESS OTHERWISE SPECIFIED:
DIMENSIONS ARE IN: INCHES [mm]
TOLERANCES: ANGULAR: $\pm 2^{\circ}$
TWO PLACE DECIMAL: $\pm .010$
THREE PLACE DECIMAL: $\pm .005$
PRINTED GRAPHICS: $\pm .010$
PROPRIETARY AND CONFIDENTIAL
THE INFORMATION CONTAINED IN THIS
DRAWING IS THE SOLE PROPERTY OF
POLYCASE. ANY REPRODUCTION IN PART
OR AS A WHOLE WITHOUT THE WRITTEN
PERMISSION OF POLYCASE IS PROHIBITED.
CAD FILE: ZX-0806P-03

PART NO. ZX-0806P-03		
MATERIAL AL 5052-H32		
FLAME RATING		
DRAWN	NAME	DATE
CHECKED	-	6/12/2019 12/19/2013

polycase		1305 CHESTER IND. PARKWAY AVON, OHIO 44011-1083 U.S.A. PH#: 1-800-248-1233, 440-934-0444 FAX#: 440-934-0088	
SIZE B	TOP BASE/COVER PANEL	REV -	
SCALE: 1:1.5		SHEET 1 OF 1	