

REV.	DESCRIPTION	ZONE	BY	APPR'D	DATE
-	PRODUCTION RELEASE		D.M.F.	D.M.F.	5/7/2020
D.01	REVISED BASE AND COVER		D.M.F.		10/11/2019
D	RELEASED FOR QUOTE		D.M.F.	B.M.B.	9/5/2019

UNLESS OTHERWISE SPECIFIED:
 DIMENSIONS ARE IN: INCHES[mm]
 TOLERANCES: ANGULAR: ±2°
 TWO PLACE DECIMAL: ±.010
 THREE PLACE DECIMAL: ±.005
 PRINTED GRAPHICS: ±.010

PROPRIETARY AND CONFIDENTIAL
 THE INFORMATION CONTAINED IN THIS
 DRAWING IS THE SOLE PROPERTY OF
 POLYCASE. ANY REPRODUCTION IN PART
 OR AS A WHOLE WITHOUT THE WRITTEN
 PERMISSION OF POLYCASE IS PROHIBITED.
 CAD FILE: ZH-060604

PART NO.
 ZH-060604-01

MATERIAL

FLAME RATING
 -

SIZE
 C

SCALE: 1:2

1305 CHESTER RD. PARKWAY AVON, OHIO 44011-1083 U.S.A.
 PH: 1-800-248-1233 440-934-0444 FAX: 440-934-0088

polycase
 HINGED ENCLOSURE

REV
 -

DRAWN
 CHECKED

NAME
 -

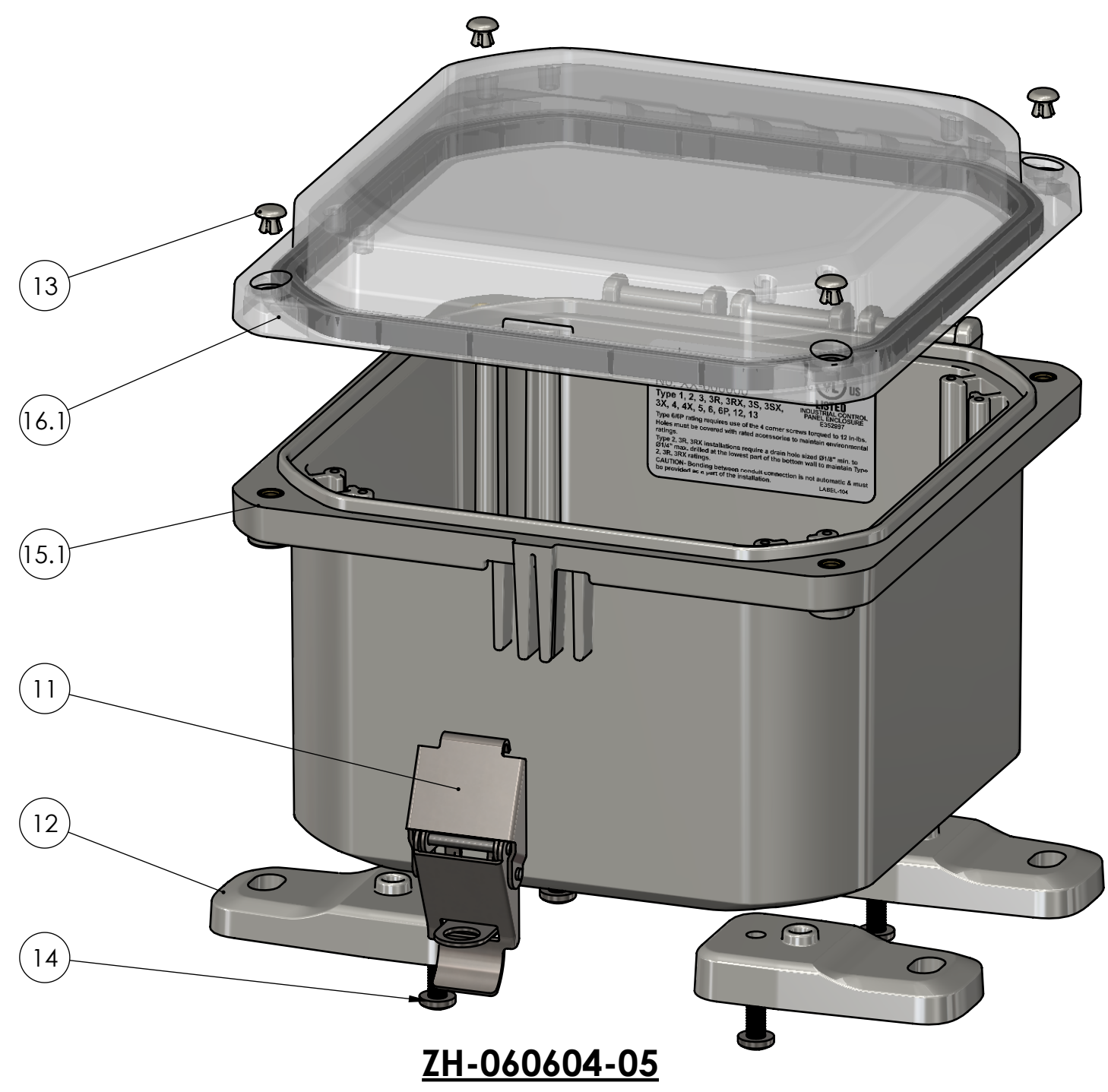
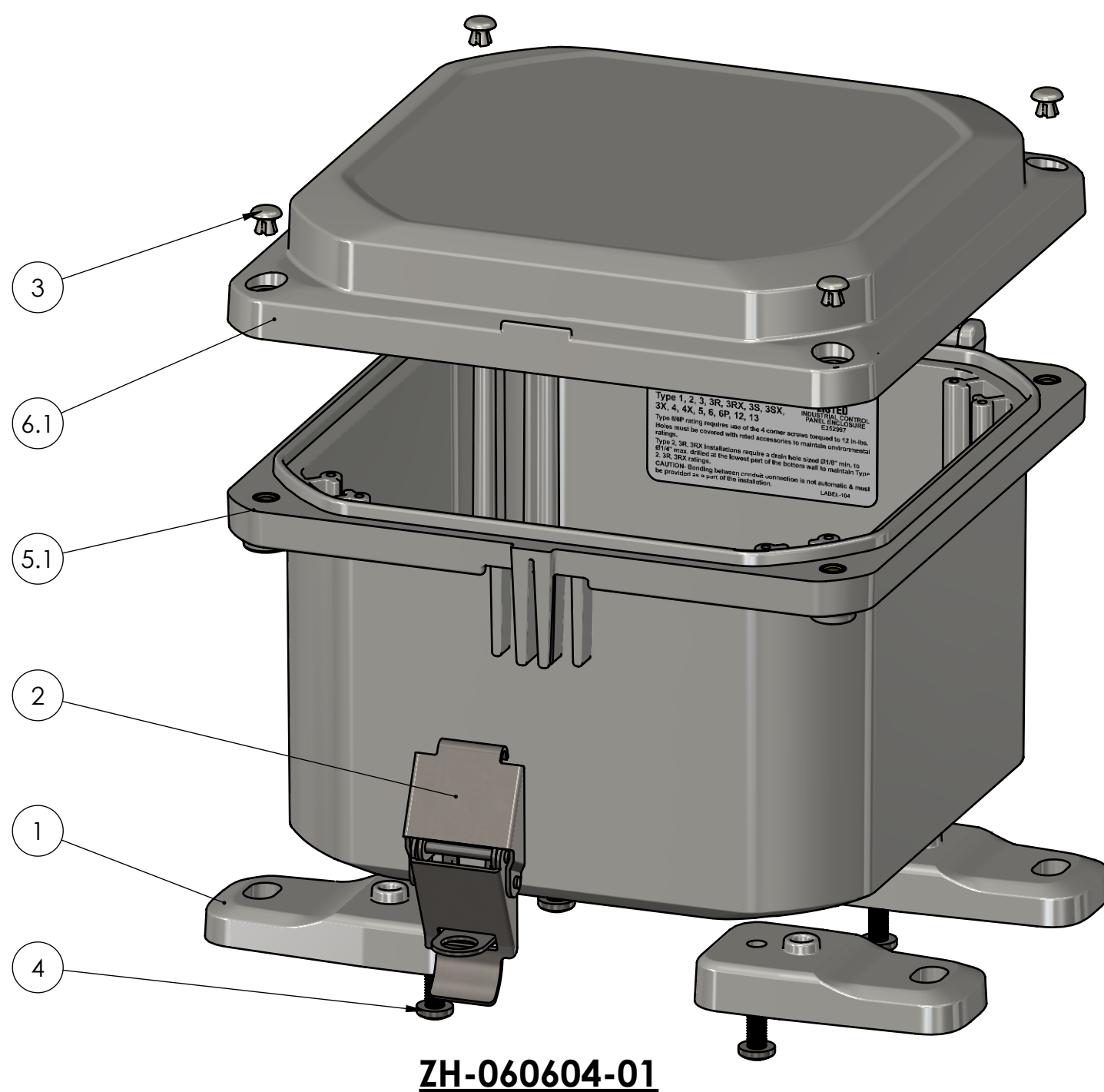
DATE
 7/30/2019

12/31/2999

SHEET 1 OF 7

BOM Table							
ITEM NO.	PART NUMBER	Rev.	Description	Material	FlameRating	Color	QTY.
1	ZH-01F-01	-	MOUNTING FOOT	PC	5VA	LIGHT GRAY	4
2	ZH-01L	-	LATCH ASSEMBLY	304SS			1
3	ZH-95P	-	HOLE PLUG	NYLON		LIGHT GRAY	4
4	SCREWS-046	-	#10-32 X .75 PAN HEAD, PHILLIPS, 316SS, MACHINE SCREW	316 SST			4
5	ZH-06064BI-01	-	HINGED BASE W/INSERTS				1
5.1	ZH-06064B-01	-	BASE, HINGED	PC	5VA	LIGHT GRAY	1
5.2	INSERTS-4	-	SELF-TAPPING INSERT: 10-32 UNF X .296 LG.	BRASS 360			12
5.3	LABEL-104	-	UL LABEL				1
6	ZH-06061CG-01	-	HINGED COVER W/GASKET				1
6.1	ZH-06061C-01	-	COVER, HINGED	PC	5VA	LIGHT GRAY	1
6.2	ZH-0606G	-	GASKET	NEOPRENE		BLACK	1

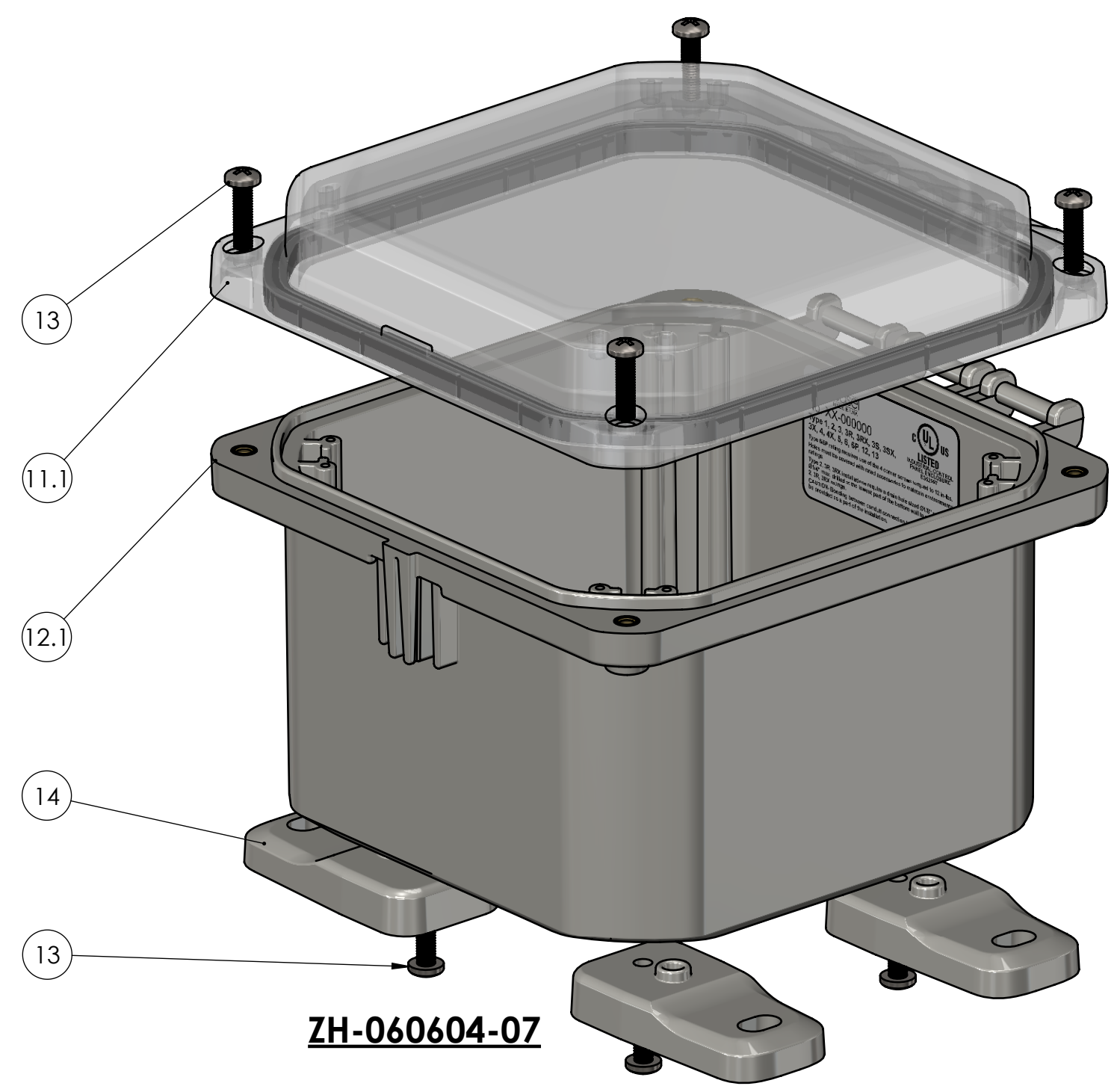
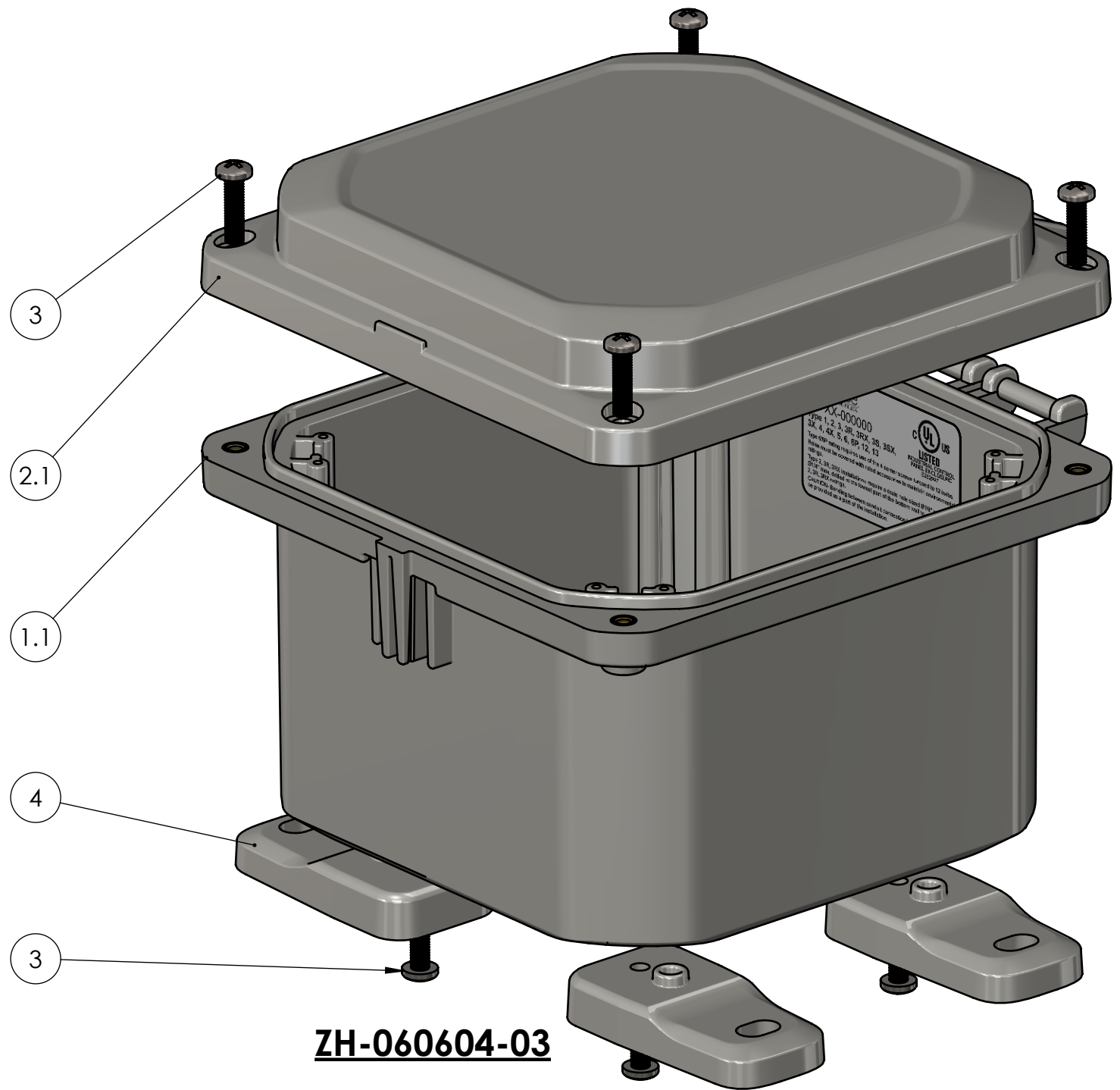
BOM Table							
ITEM NO.	PART NUMBER	Rev.	Description	Material	FlameRating	Color	QTY.
11	ZH-01L	-	LATCH ASSEMBLY	304SS			1
12	ZH-01F-01	-	MOUNTING FOOT	PC	5VA	LIGHT GRAY	4
13	ZH-95P	-	HOLE PLUG	NYLON		LIGHT GRAY	4
14	SCREWS-046	-	#10-32 X .75 PAN HEAD, PHILLIPS, 316SS, MACHINE SCREW	316 SST			4
15	ZH-06064BI-01	-	HINGED BASE W/INSERTS				1
15.1	ZH-06064B-01	-	BASE, HINGED	PC	5VA	LIGHT GRAY	1
15.2	INSERTS-4	-	SELF-TAPPING INSERT: 10-32 UNF X .296 LG.	BRASS 360			12
15.3	LABEL-104	-	UL LABEL				1
16	ZH-06061CG-02	-	HINGED COVER W/GASKET				1
16.1	ZH-06061C-02	-	COVER, HINGED	PC	5VA	CLEAR	1
16.2	ZH-0606G	-	GASKET	NEOPRENE		BLACK	1



UNLESS OTHERWISE SPECIFIED: DIMENSIONS ARE IN: INCHES[mm] TOLERANCES: ANGULAR: ±2° TWO PLACE DECIMAL: ±.010 THREE PLACE DECIMAL: ±.005 PRINTED GRAPHICS: ±.010		PART NO. ZH-060604-01		 <small>1305 CHESTER RD. PARKWAY AVON, OHIO 44011-1083 U.S.A. PH: 1-800-248-1233, 440-934-0444 FAX: 440-934-0088</small>
PROPRIETARY AND CONFIDENTIAL THE INFORMATION CONTAINED IN THIS DRAWING IS THE SOLE PROPERTY OF POLYCASE. ANY REPRODUCTION IN PART OR AS A WHOLE WITHOUT THE WRITTEN PERMISSION OF POLYCASE IS PROHIBITED. CAD FILE: ZH-060604		MATERIAL		
FLAME RATING -		SIZE C	HINGED ENCLOSURE	
DRAWN CHECKED		NAME D.M.F.	DATE 7/30/2019	REV -
		SCALE: 1:1.5		SHEET 2 OF 7

BOM Table							
ITEM NO.	PART NUMBER	Rev.	Description	Material	FlameRating	Color	QTY.
1	ZH-06064BI-01	-	HINGED BASE W/INSERTS				1
1.1	ZH-06064B-01	-	BASE, HINGED	PC	5VA	LIGHT GRAY	1
1.2	INSERTS-4	-	SELF-TAPPING INSERT: 10-32 UNF X .296 LG.	BRASS 360			12
1.3	LABEL-104	-	UL LABEL				1
2	ZH-06061CG-01	-	HINGED COVER W/GASKET				1
2.1	ZH-06061C-01	-	COVER, HINGED	PC	5VA	LIGHT GRAY	1
2.2	ZH-0606G	-	GASKET	NEOPRENE		BLACK	1
3	SCREWS-046	-	#10-32 X .75 PAN HEAD, PHILLIPS, 316SS, MACHINE SCREW	316 SST			8
4	ZH-01F-01	-	MOUNTING FOOT	PC	5VA	LIGHT GRAY	4

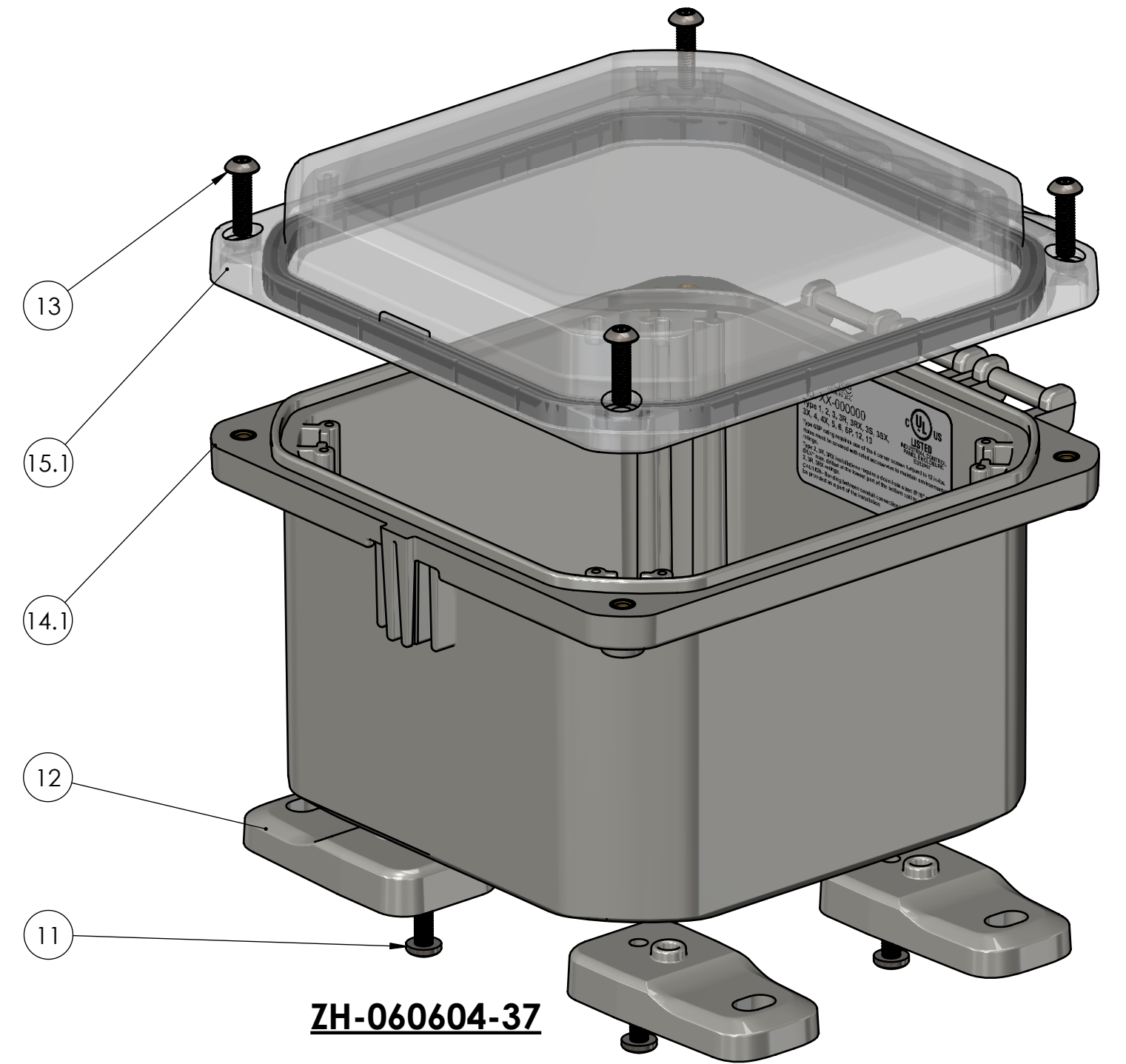
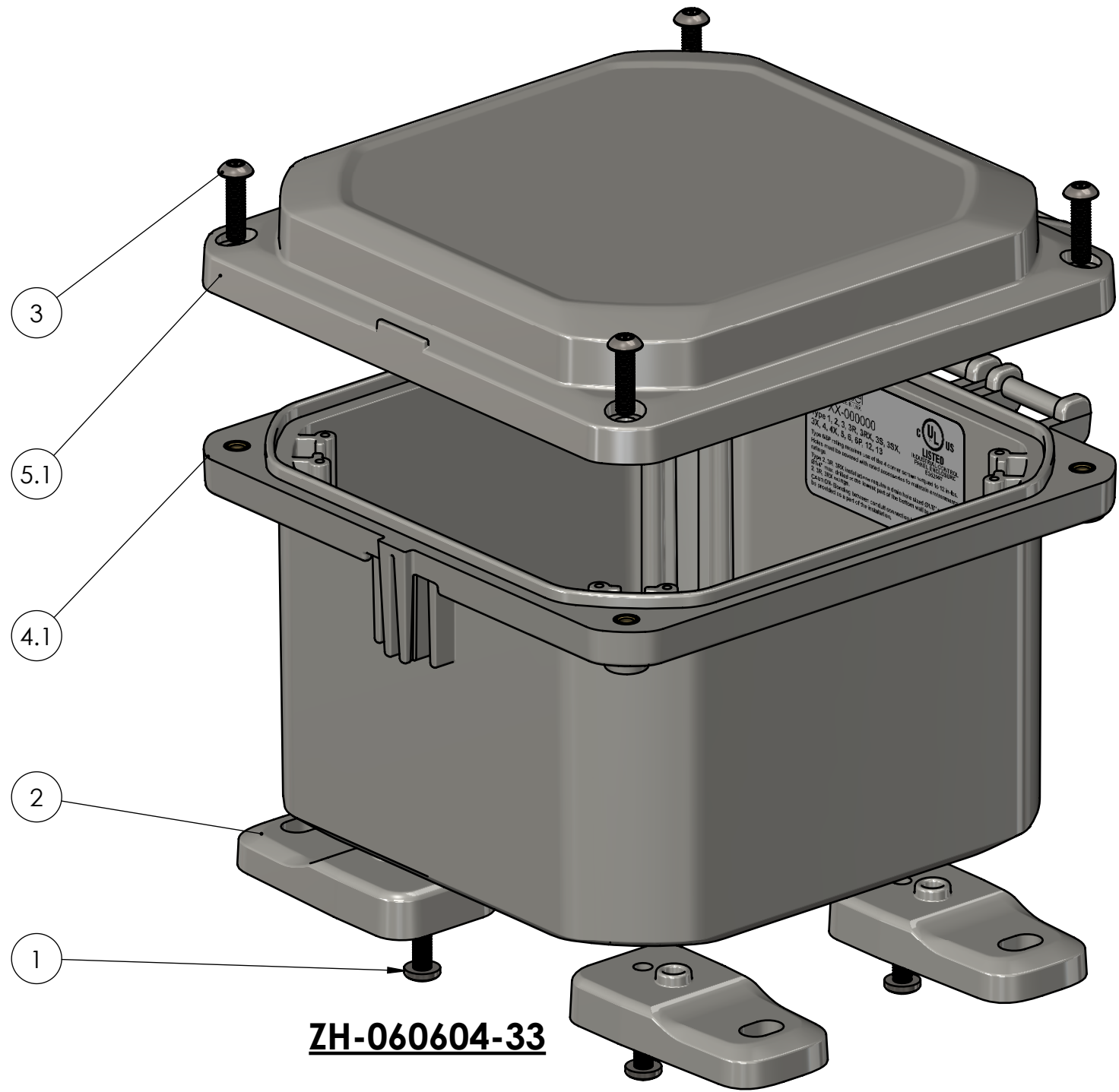
BOM Table							
ITEM NO.	PART NUMBER	Rev.	Description	Material	FlameRating	Color	QTY.
11	ZH-06061CG-02	-	HINGED COVER W/GASKET				1
11.1	ZH-06061C-02	-	COVER, HINGED	PC	5VA	CLEAR	1
11.2	ZH-0606G	-	GASKET	NEOPRENE		BLACK	1
12	ZH-06064BI-01	-	HINGED BASE W/INSERTS				1
12.1	ZH-06064B-01	-	BASE, HINGED	PC	5VA	LIGHT GRAY	1
12.2	INSERTS-4	-	SELF-TAPPING INSERT: 10-32 UNF X .296 LG.	BRASS 360			12
12.3	LABEL-104	-	UL LABEL				1
13	SCREWS-046	-	#10-32 X .75 PAN HEAD, PHILLIPS, 316SS, MACHINE SCREW	316 SST			8
14	ZH-01F-01	-	MOUNTING FOOT	PC	5VA	LIGHT GRAY	4



UNLESS OTHERWISE SPECIFIED: DIMENSIONS ARE IN: INCHES[mm] TOLERANCES: ANGULAR: ±2° TWO PLACE DECIMAL: ±.010 THREE PLACE DECIMAL: ±.005 PRINTED GRAPHICS: ±.010		PART NO. ZH-060604-03		 <small>1305 CHESTER RD. PARKWAY AVON, OHIO 44011-1083 U.S.A. PH: 1-800-248-1233, 440-934-0444 FAX: 440-934-0088</small>
<small>PROPRIETARY AND CONFIDENTIAL THE INFORMATION CONTAINED IN THIS DRAWING IS THE SOLE PROPERTY OF POLYCASE. ANY REPRODUCTION IN PART OR AS A WHOLE WITHOUT THE WRITTEN PERMISSION OF POLYCASE IS PROHIBITED. CAD FILE: ZH-060604</small>		MATERIAL		
<small>FLAME RATING</small> -		<small>SIZE</small> C		<small>HINGED ENCLOSURE</small> REV -
<small>DRAWN</small> <small>CHECKED</small>		<small>NAME</small> D.M.F.	<small>DATE</small> 7/30/2019 12/31/2999	<small>SCALE: 1:1.5</small>
				<small>SHEET 3 OF 7</small>

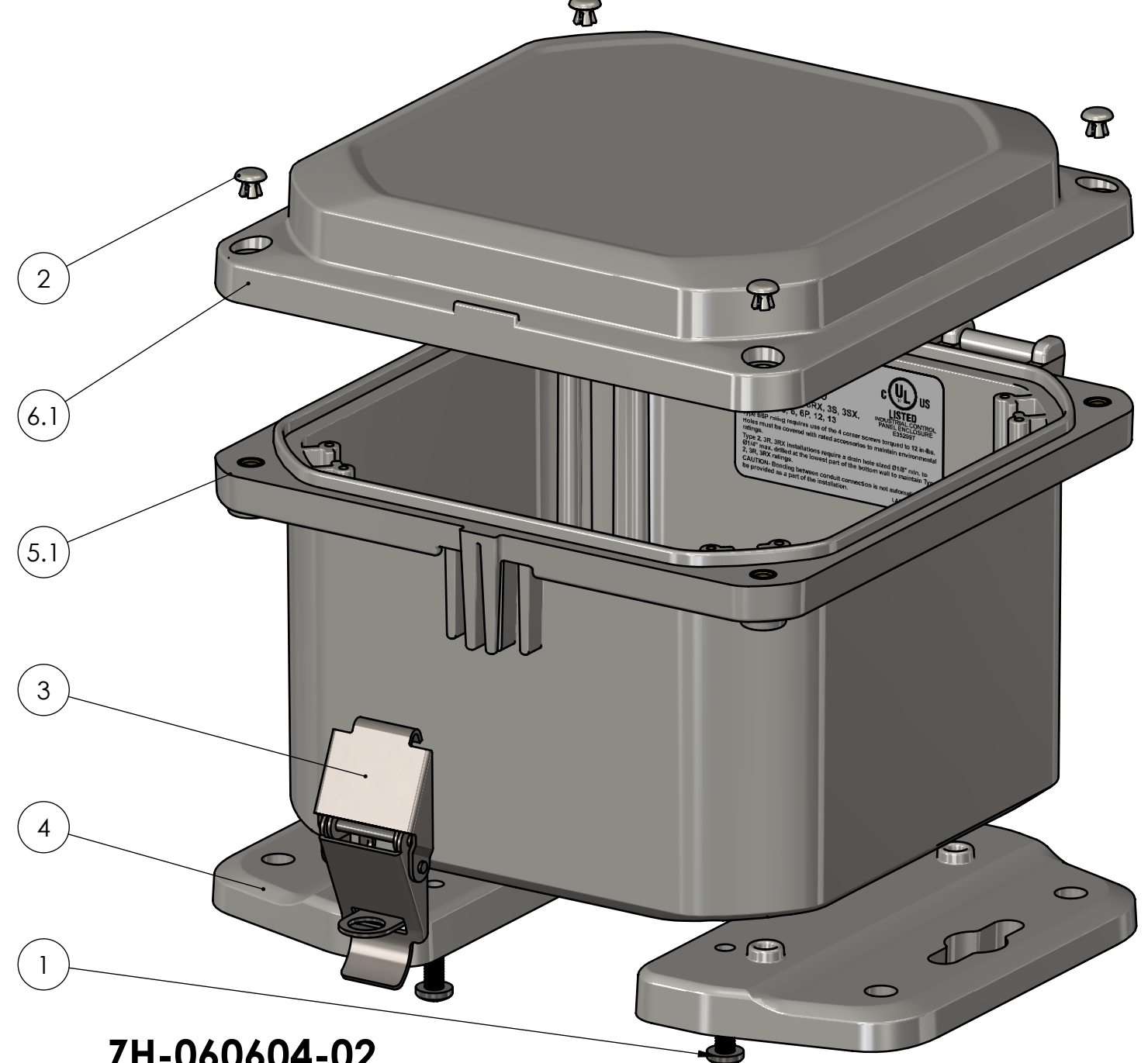
BOM Table							
ITEM NO.	PART NUMBER	Rev.	Description	Material	FlameRating	Color	QTY.
1	SCREWS-046		#10-32 X .75 PAN HEAD, PHILLIPS, 316SS, MACHINE SCREW	316 SST			4
2	ZH-01F-01	-	MOUNTING FOOT	PC	5VA	LIGHT GRAY	4
3	SCREWS-047	-	#10-32 X .75 TAMPER-RESIST TORX BUTTON-HEAD SCREW	304SS			4
4	ZH-06064BI-01	-	HINGED BASE W/INSERTS				1
4.1	ZH-06064B-01	-	BASE, HINGED	PC	5VA	LIGHT GRAY	1
4.2	INSERTS-4	-	SELF-TAPPING INSERT: 10-32 UNF X .296 LG.	BRASS 360			12
4.3	LABEL-104	-	UL LABEL				1
5	ZH-06061CG-01	-	HINGED COVER W/GASKET				1
5.1	ZH-06061C-01	-	COVER, HINGED	PC	5VA	LIGHT GRAY	1
5.2	ZH-0606G	-	GASKET	NEOPRENE		BLACK	1

BOM Table							
ITEM NO.	PART NUMBER	Rev.	Description	Material	FlameRating	Color	QTY.
11	SCREWS-046		#10-32 X .75 PAN HEAD, PHILLIPS, 316SS, MACHINE SCREW	316 SST			4
12	ZH-01F-01	-	MOUNTING FOOT	PC	5VA	LIGHT GRAY	4
13	SCREWS-047	-	#10-32 X .75 TAMPER-RESIST TORX BUTTON-HEAD SCREW	304SS			4
14	ZH-06064BI-01	-	HINGED BASE W/INSERTS				1
14.1	ZH-06064B-01	-	BASE, HINGED	PC	5VA	LIGHT GRAY	1
14.2	INSERTS-4	-	SELF-TAPPING INSERT: 10-32 UNF X .296 LG.	BRASS 360			12
14.3	LABEL-104	-	UL LABEL				1
15	ZH-06061CG-02	-	HINGED COVER W/GASKET				1
15.1	ZH-06061C-02	-	COVER, HINGED	PC	5VA	CLEAR	1
15.2	ZH-0606G	-	GASKET	NEOPRENE		BLACK	1

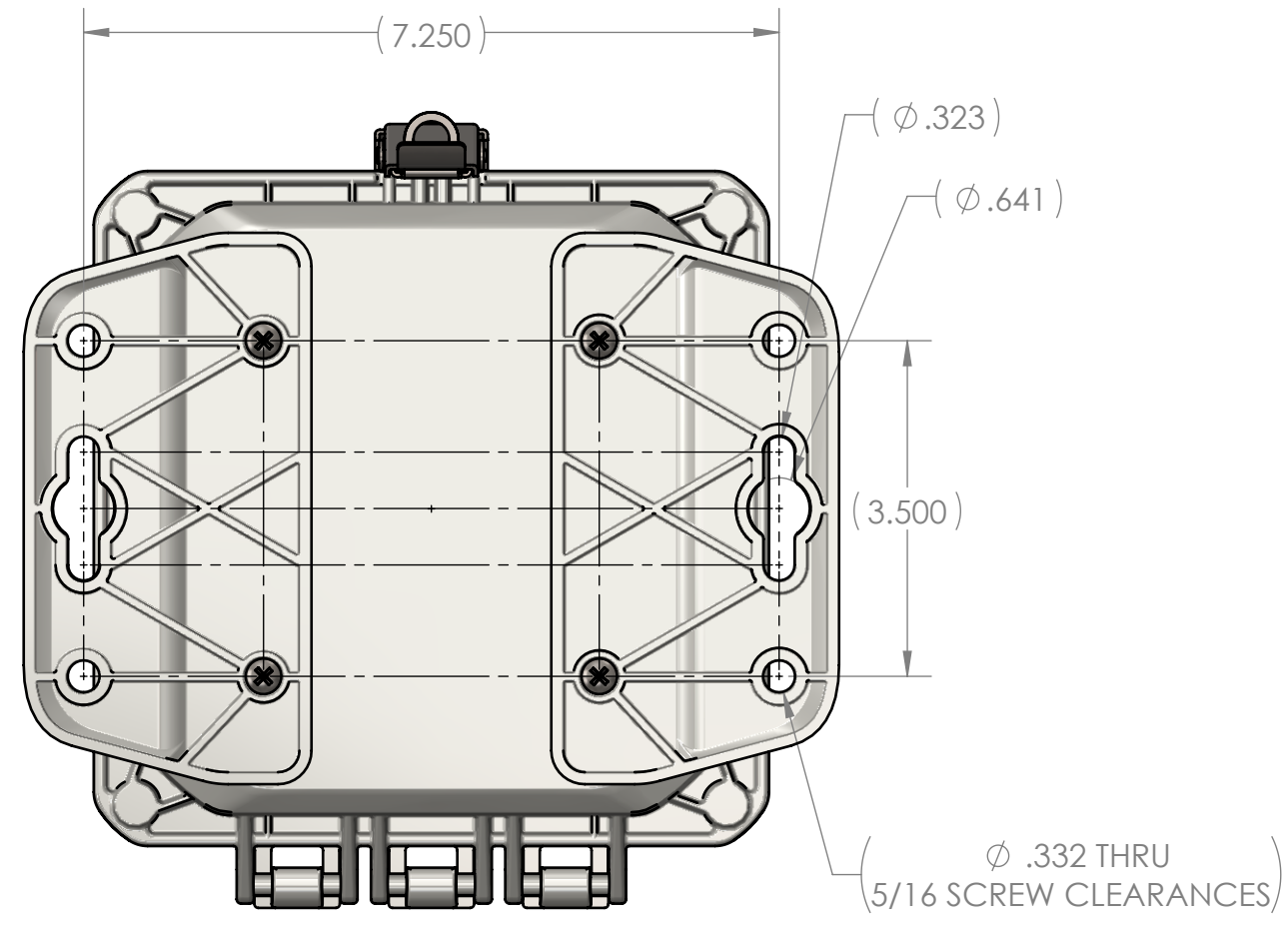


UNLESS OTHERWISE SPECIFIED: DIMENSIONS ARE IN: INCHES[mm] TOLERANCES: ANGULAR: ±2° TWO PLACE DECIMAL: ±.010 THREE PLACE DECIMAL: ±.005 PRINTED GRAPHICS: ±.010		PART NO. ZH-060604-33		 <small>1305 CHESTER RD. PARKWAY AVON, OHIO 44011-1083 U.S.A. PH: 1-800-248-1233, 440-934-0444 FAX: 440-934-0088</small>
PROPRIETARY AND CONFIDENTIAL THE INFORMATION CONTAINED IN THIS DRAWING IS THE SOLE PROPERTY OF POLYCASE. ANY REPRODUCTION IN PART OR AS A WHOLE WITHOUT THE WRITTEN PERMISSION OF POLYCASE IS PROHIBITED. <small>CAD FILE: ZH-060604</small>		MATERIAL FLAME RATING -		
DRAWN CHECKED		NAME D.M.F.	DATE 7/30/2019 12/31/2999	SCALE: 1:1.5
				REV - SHEET 4 OF 7

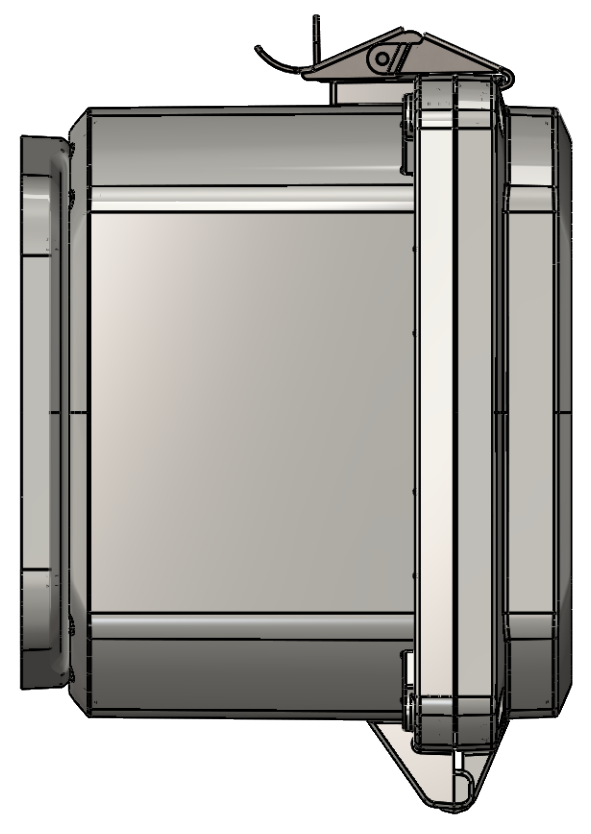
ITEM NO.	PART NUMBER	Rev.	Description	Material	FlameRating	Color	QTY.
1	SCREWS-046	-	#10-32 X .75 PAN HEAD, PHILLIPS, 316SS, MACHINE SCREW	316 SST			4
2	ZH-95P	-	HOLE PLUG	NYLON		LIGHT GRAY	4
3	ZH-01L	-	LATCH ASSEMBLY	304SS			1
4	ZH-06F-01	-	MOUNTING FLANGE	PC	5VA	LIGHT GRAY	2
5	ZH-06064BI-01	-	HINGED BASE W/INSERTS				1
5.1	ZH-06064B-01	-	BASE, HINGED	PC	5VA	LIGHT GRAY	1
5.2	INSERTS-4	-	SELF-TAPPING INSERT: 10-32 UNF X .296 LG.	BRASS 360			12
5.3	LABEL-104	-	UL LABEL				1
6	ZH-06061CG-01	-	HINGED COVER W/GASKET				1
6.1	ZH-06061C-01	-	COVER, HINGED	PC	5VA	LIGHT GRAY	1
6.2	ZH-0606G	-	GASKET	NEOPRENE		BLACK	1



ZH-060604-02

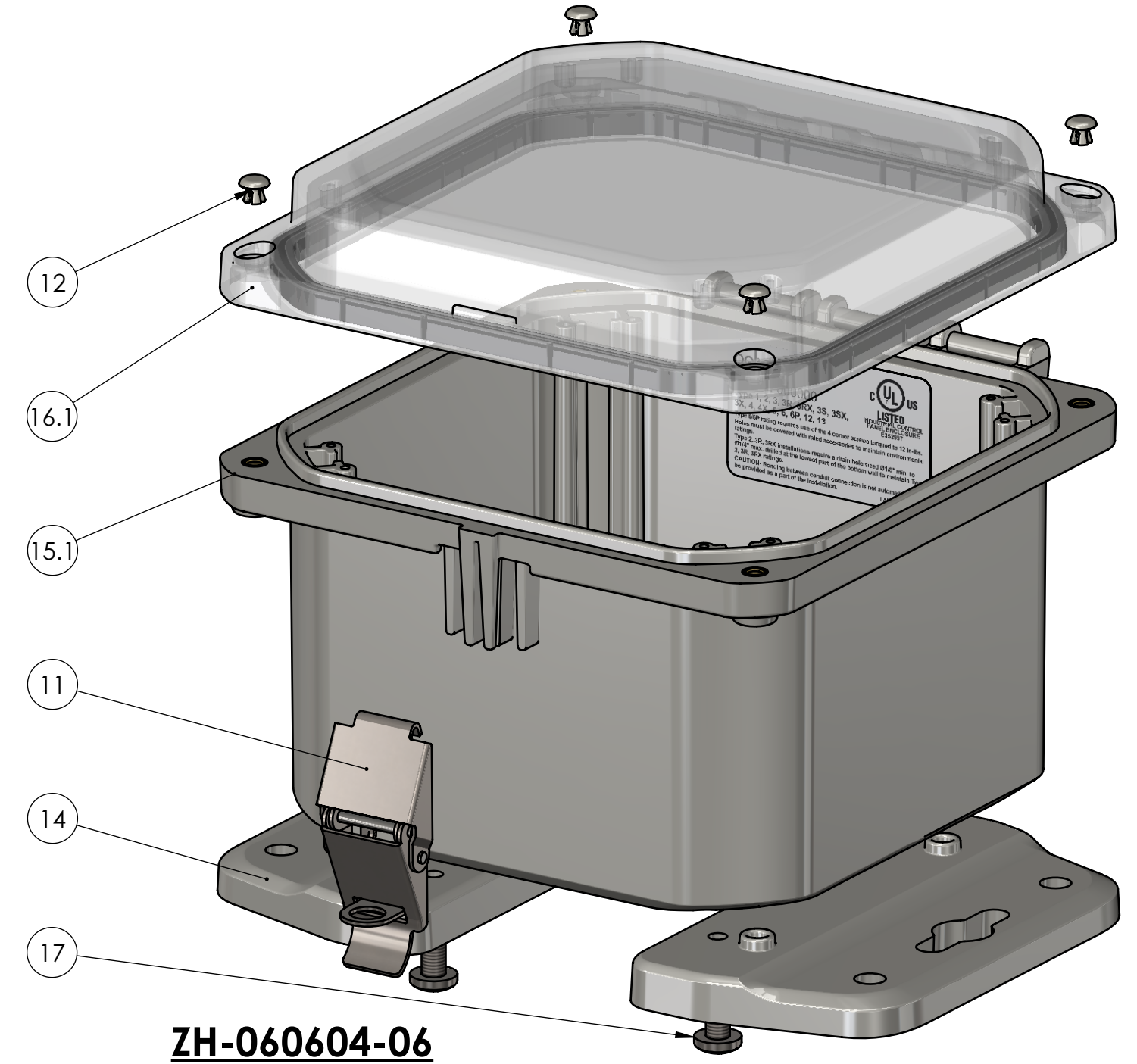


SCALE 1 : 2



SCALE 1 : 2

ITEM NO.	PART NUMBER	Rev.	Description	Material	FlameRating	Color	QTY.
11	ZH-01L	-	LATCH ASSEMBLY	304SS			1
12	ZH-95P	-	HOLE PLUG	NYLON		LIGHT GRAY	4
13	SCREWS-046	-	#10-32 X .75 PAN HEAD, PHILLIPS, 316SS, MACHINE SCREW	316 SST			1
14	ZH-06F-01	-	MOUNTING FLANGE	PC	5VA	LIGHT GRAY	2
15	ZH-06064BI-01	-	HINGED BASE W/INSERTS				1
15.1	ZH-06064B-01	-	BASE, HINGED	PC	5VA	LIGHT GRAY	1
15.2	INSERTS-4	-	SELF-TAPPING INSERT: 10-32 UNF X .296 LG.	BRASS 360			12
15.3	LABEL-104	-	UL LABEL				1
16	ZH-06061CG-02	-	HINGED COVER W/GASKET				1
16.1	ZH-06061C-02	-	COVER, HINGED	PC	5VA	CLEAR	1
16.2	ZH-0606G	-	GASKET	NEOPRENE		BLACK	1
17	SCREWS-031	-	CR PHMS 0.25-20x0.75	SST			3

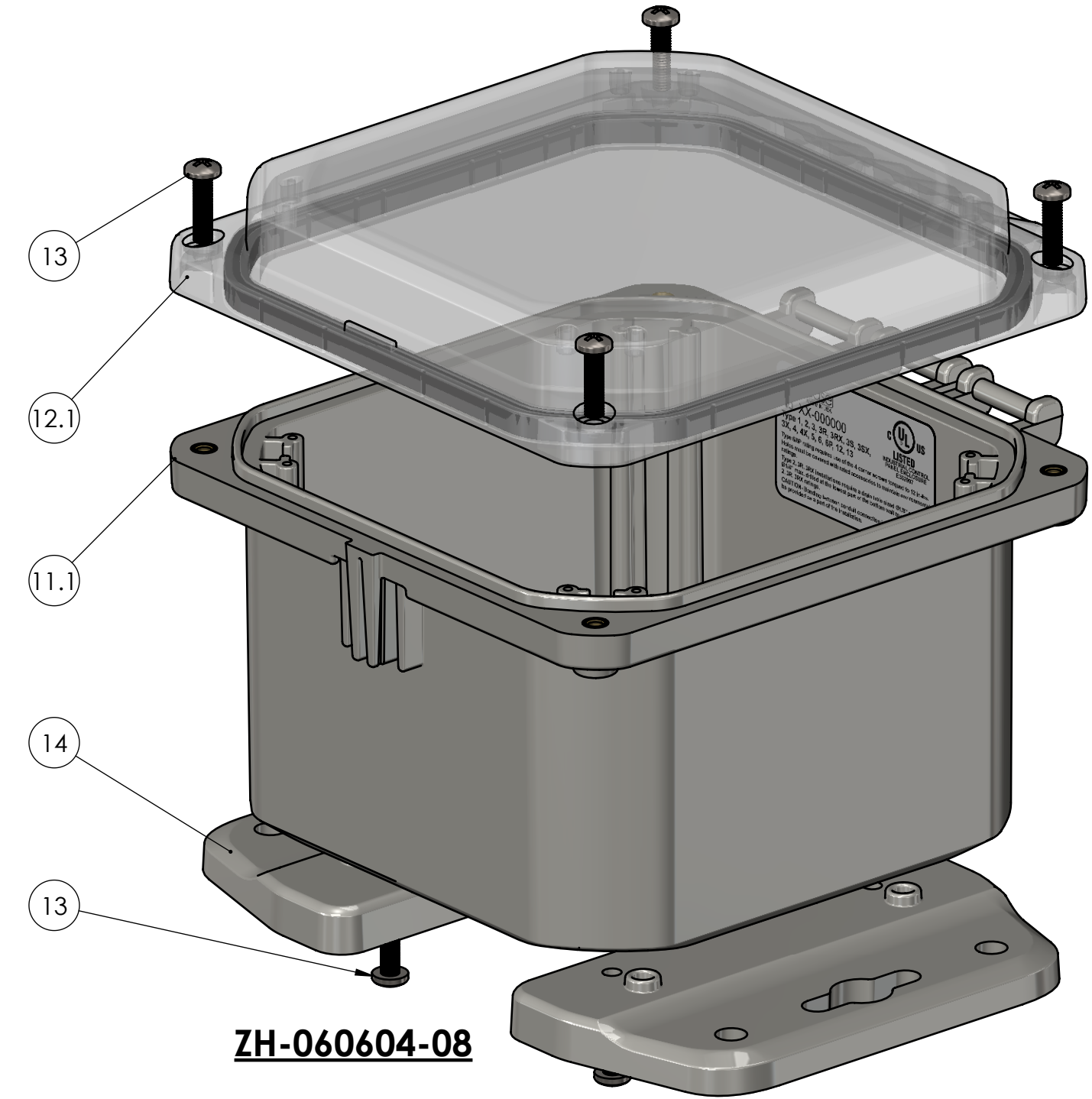
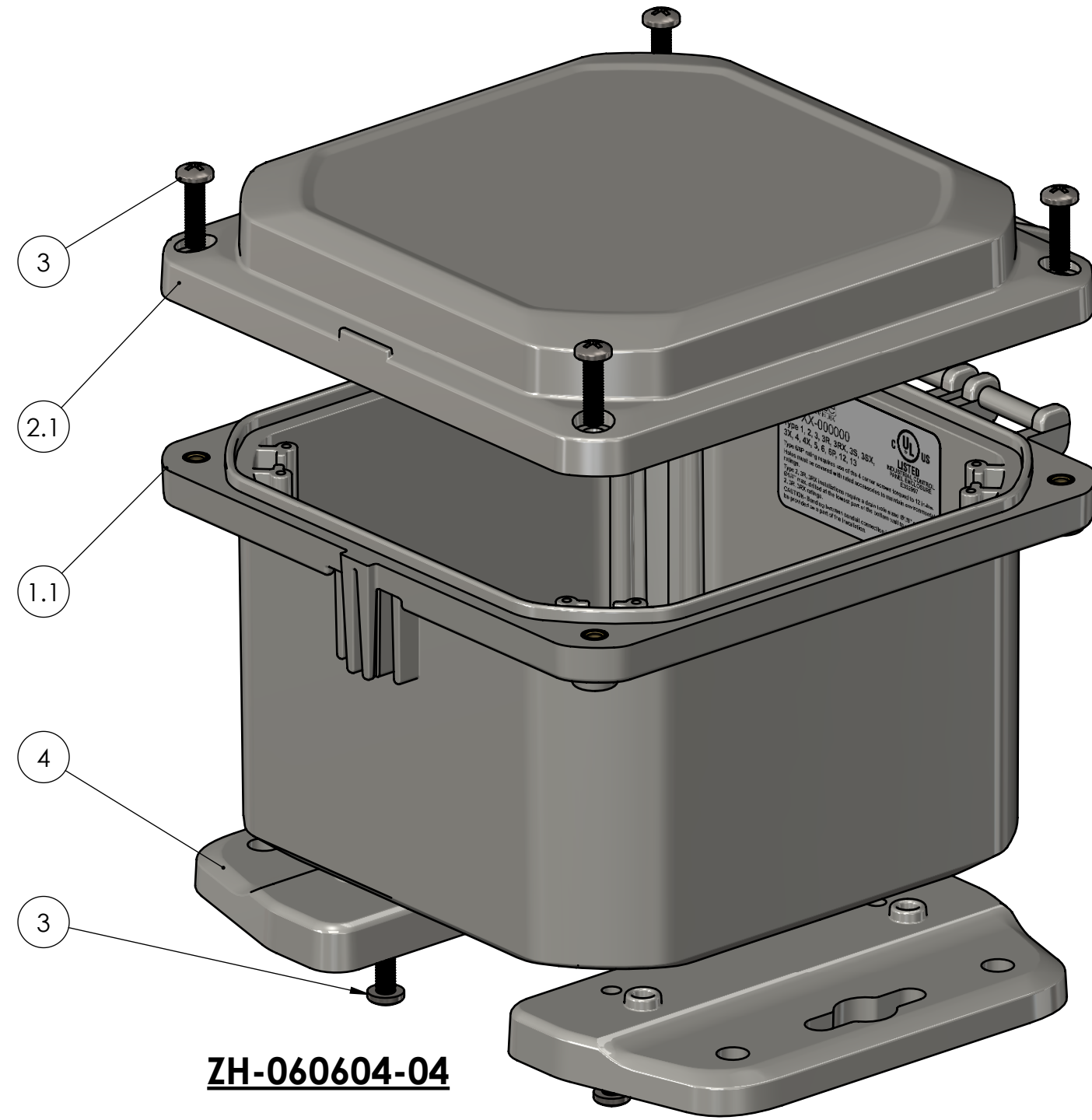


ZH-060604-06

UNLESS OTHERWISE SPECIFIED: DIMENSIONS ARE IN: INCHES[mm] TOLERANCES: ANGULAR: ±2° TWO PLACE DECIMAL: ±.010 THREE PLACE DECIMAL: ±.005 PRINTED GRAPHICS: ±.010		PART NO. ZH-060604-02		 1305 CHESTER RD. PARKWAY AVON, OHIO 44011-1083 U.S.A. PH: 1-800-248-1233, 440-934-0444 FAX: 440-934-0088
PROPRIETARY AND CONFIDENTIAL THE INFORMATION CONTAINED IN THIS DRAWING IS THE SOLE PROPERTY OF POLYCASE. ANY REPRODUCTION IN PART OR AS A WHOLE WITHOUT THE WRITTEN PERMISSION OF POLYCASE IS PROHIBITED. CAD FILE: ZH-060604		MATERIAL		
FLAME RATING		SIZE	HINGED ENCLOSURE	
-		C	REV	
DRAWN		NAME	DATE	SCALE: 1:1.5
CHECKED		D.M.F.	7/30/2019	
			12/31/2999	SHEET 5 OF 7

BOM Table							
ITEM NO.	PART NUMBER	Rev.	Description	Material	FlameRating	Color	QTY.
1	ZH-06064BI-01	-	HINGED BASE W/INSERTS				1
1.1	ZH-06064B-01	-	BASE, HINGED	PC	5VA	LIGHT GRAY	1
1.2	INSERTS-4	-	SELF-TAPPING INSERT: 10-32 UNF X .296 LG.	BRASS 360			12
1.3	LABEL-104	-	UL LABEL				1
2	ZH-06061CG-01	-	HINGED COVER W/GASKET				1
2.1	ZH-06061C-01	-	COVER, HINGED	PC	5VA	LIGHT GRAY	1
2.2	ZH-0606G	-	GASKET	NEOPRENE		BLACK	1
3	SCREWS-046		#10-32 X .75 PAN HEAD, PHILLIPS, 316SS, MACHINE SCREW	316 SST			8
4	ZH-06F-01	-	MOUNTING FLANGE	PC	5VA	LIGHT GRAY	2

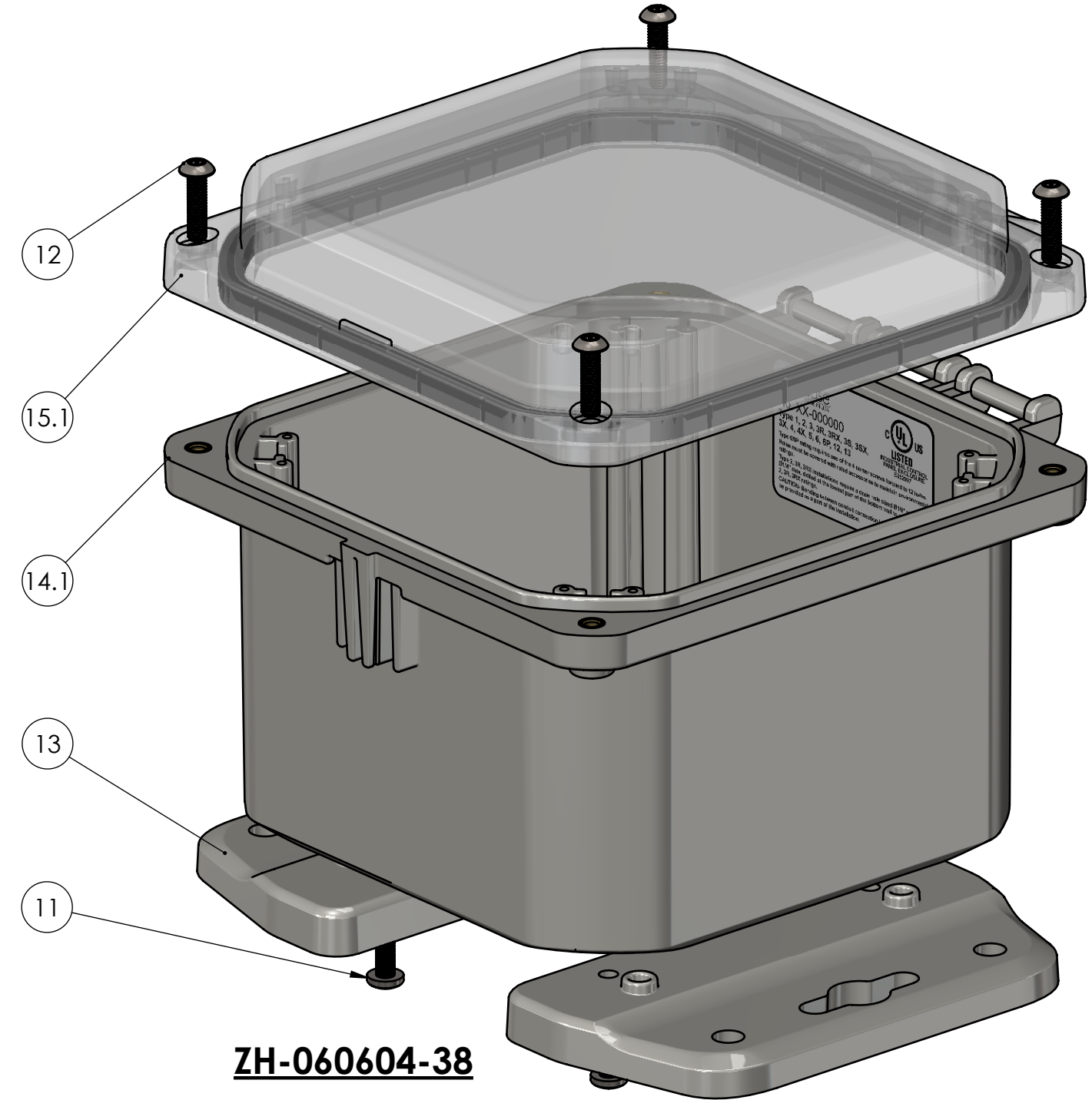
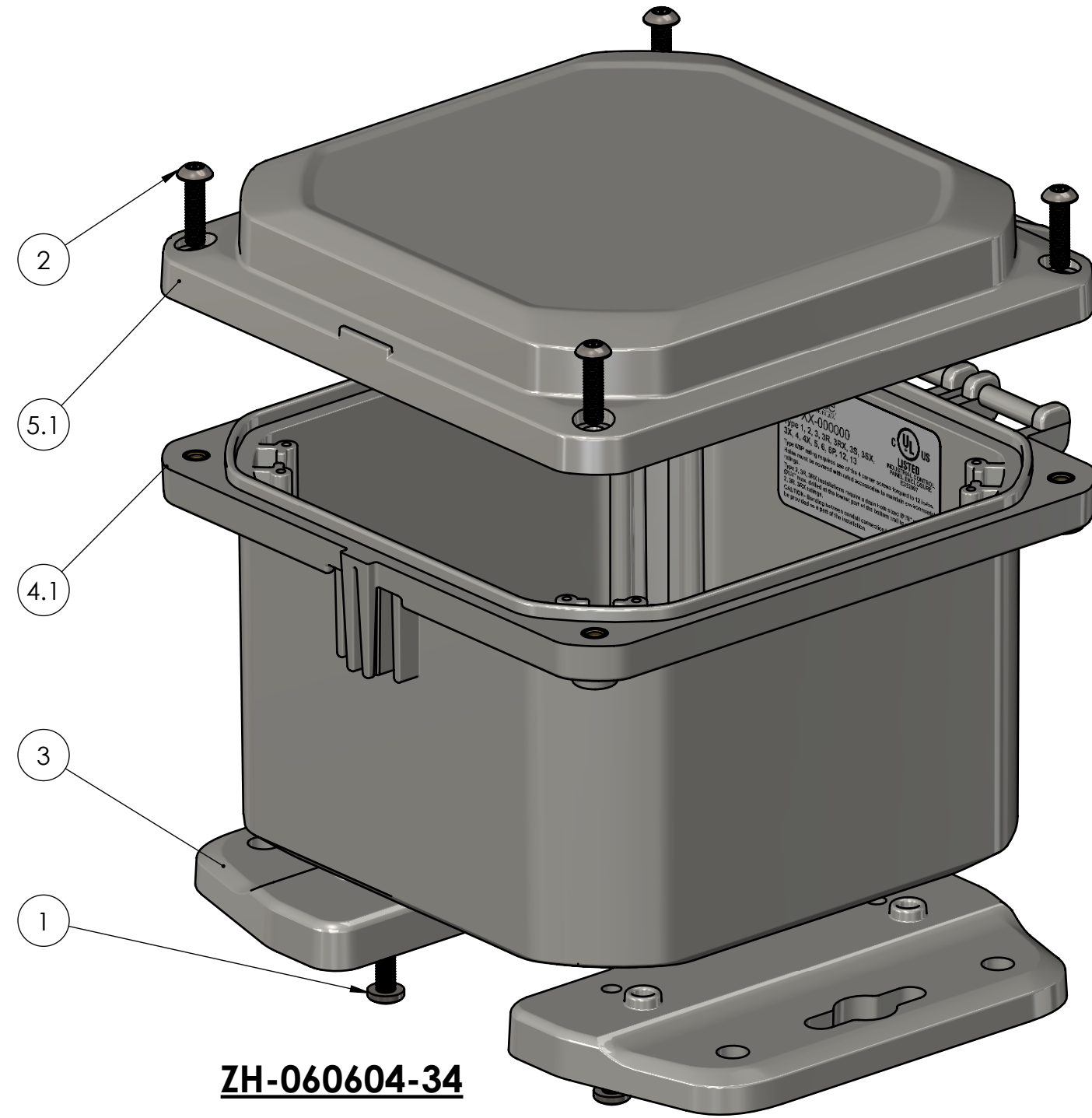
BOM Table							
ITEM NO.	PART NUMBER	Rev.	Description	Material	FlameRating	Color	QTY.
11	ZH-06064BI-01	-	HINGED BASE W/INSERTS				1
11.1	ZH-06064B-01	-	BASE, HINGED	PC	5VA	LIGHT GRAY	1
11.2	INSERTS-4	-	SELF-TAPPING INSERT: 10-32 UNF X .296 LG.	BRASS 360			12
11.3	LABEL-104	-	UL LABEL				1
12	ZH-06061CG-02	-	HINGED COVER W/GASKET				1
12.1	ZH-06061C-02	-	COVER, HINGED	PC	5VA	CLEAR	1
12.2	ZH-0606G	-	GASKET	NEOPRENE		BLACK	1
13	SCREWS-046		#10-32 X .75 PAN HEAD, PHILLIPS, 316SS, MACHINE SCREW	316 SST			8
14	ZH-06F-01	-	MOUNTING FLANGE	PC	5VA	LIGHT GRAY	2



UNLESS OTHERWISE SPECIFIED: DIMENSIONS ARE IN: INCHES[mm] TOLERANCES: ANGULAR: ±2° TWO PLACE DECIMAL: ±.010 THREE PLACE DECIMAL: ±.005 PRINTED GRAPHICS: ±.010		PART NO. ZH-060604-04		 1305 CHESTER RD. PARKWAY AVON, OHIO 44011-1083 U.S.A. PH: 1-800-248-1233, 440-934-0444 FAX: 440-934-0088
PROPRIETARY AND CONFIDENTIAL THE INFORMATION CONTAINED IN THIS DRAWING IS THE SOLE PROPERTY OF POLYCASE. ANY REPRODUCTION IN PART OR AS A WHOLE WITHOUT THE WRITTEN PERMISSION OF POLYCASE IS PROHIBITED. CAD FILE: ZH-060604		MATERIAL		
FLAME RATING -		SIZE C		HINGED ENCLOSURE
DRAWN CHECKED		NAME D.M.F.	DATE 7/30/2019 12/31/2999	REV -
		SCALE: 1:1.5		SHEET 6 OF 7

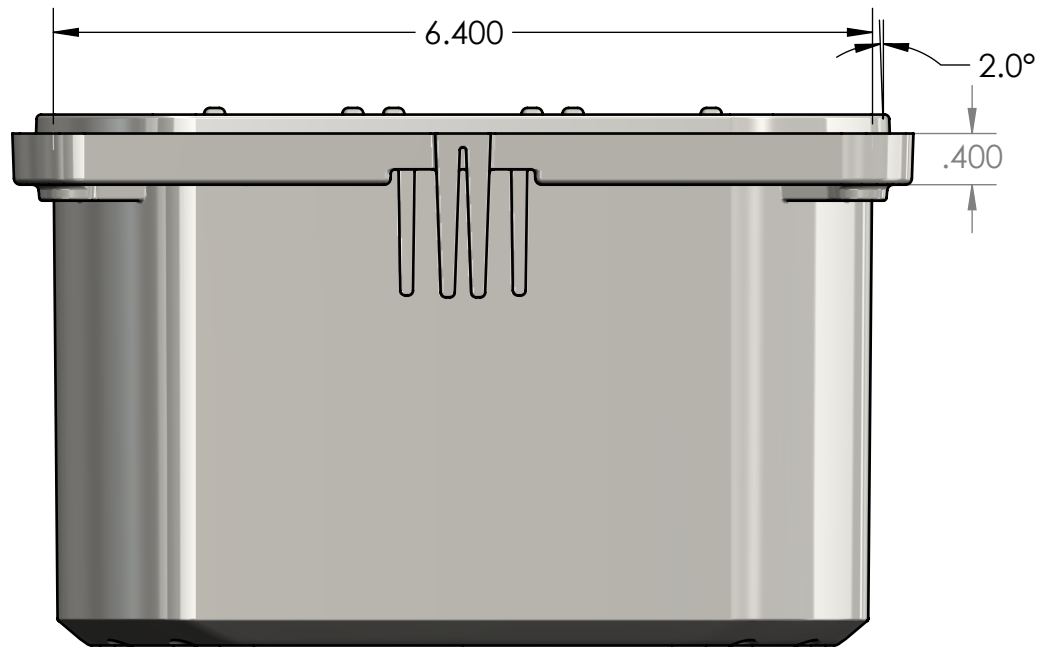
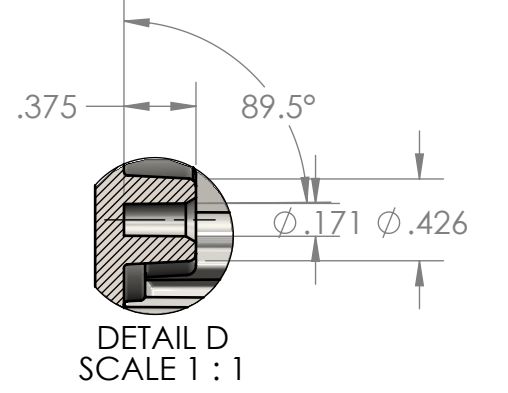
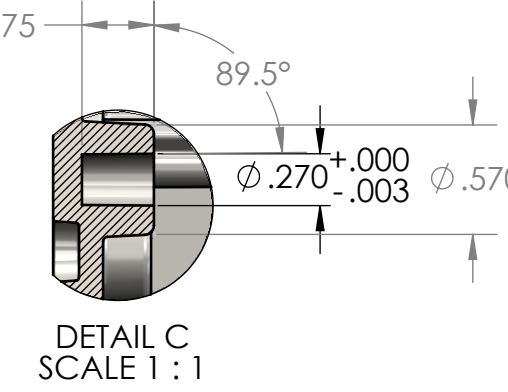
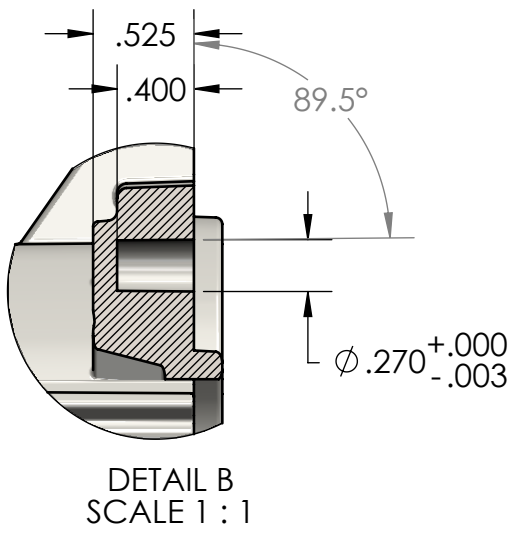
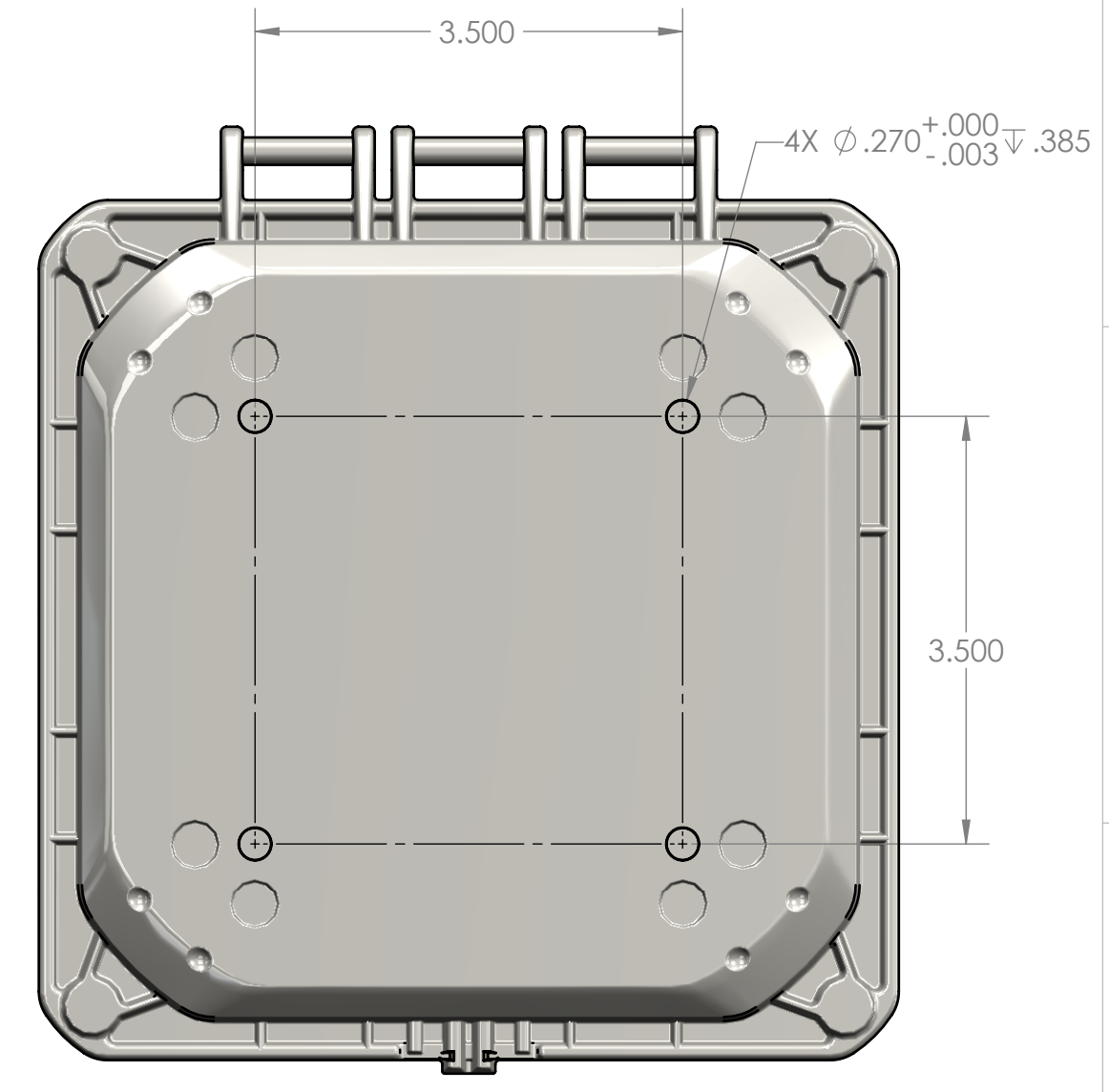
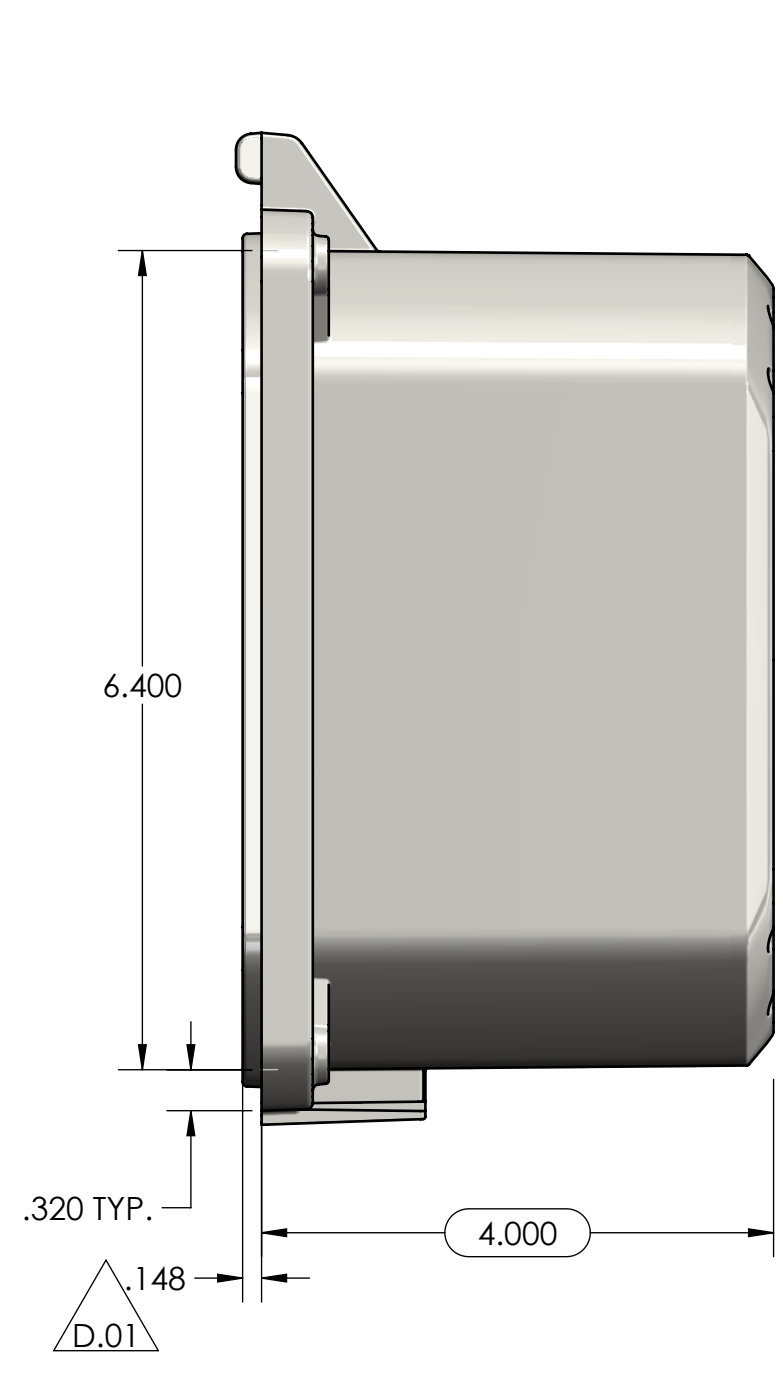
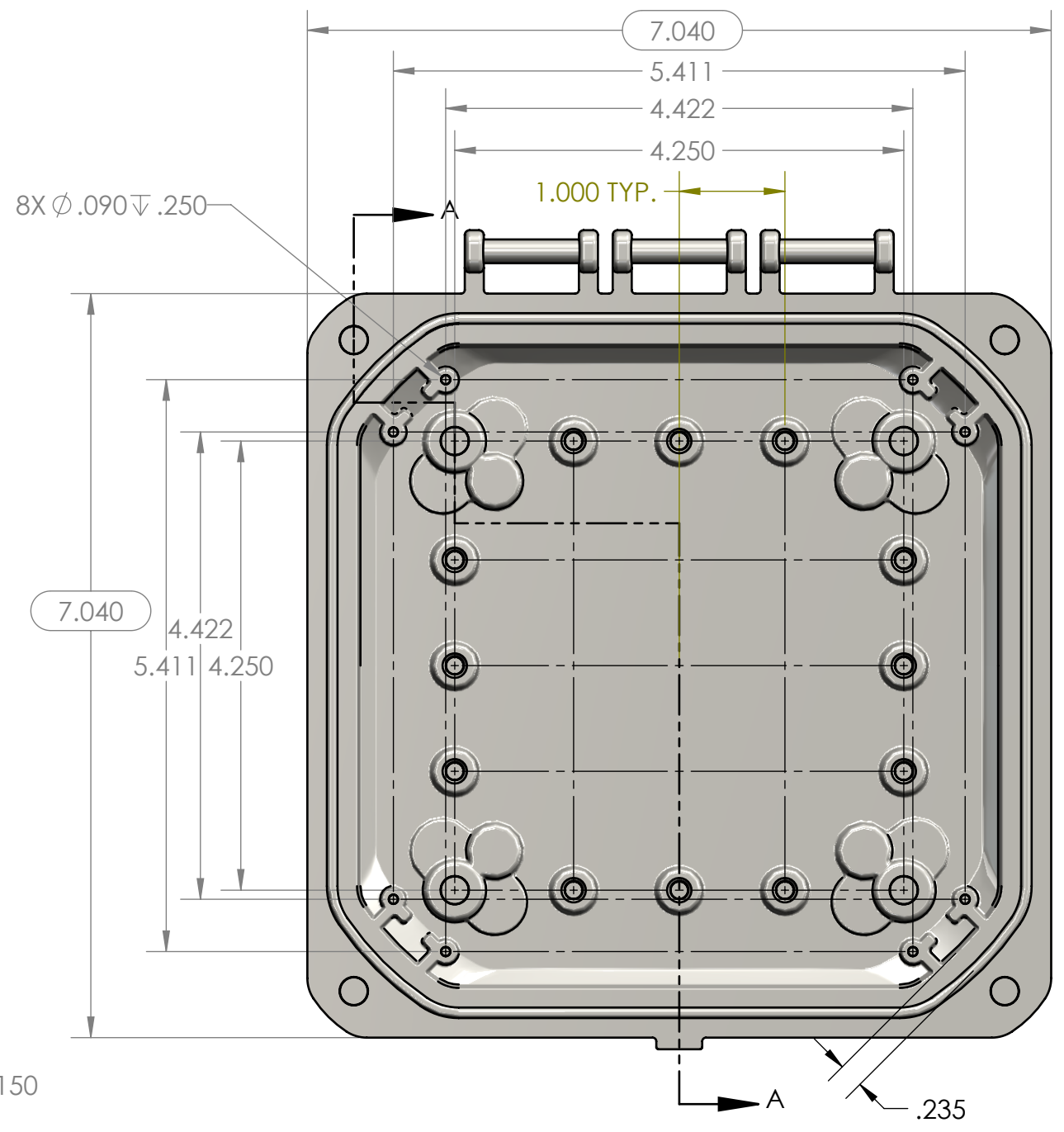
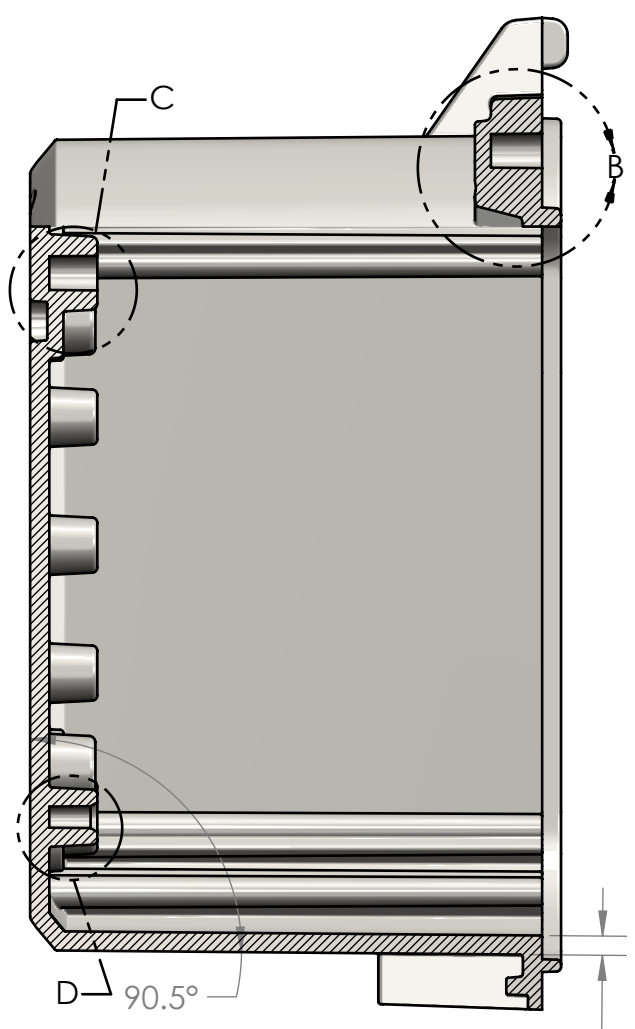
BOM Table							
ITEM NO.	PART NUMBER	Rev.	Description	Material	FlameRating	Color	QTY.
1	SCREWS-046		#10-32 X .75 PAN HEAD, PHILLIPS, 316SS, MACHINE SCREW	316 SST			4
2	SCREWS-047	-	#10-32 X .75 TAMPER-RESIST TORX BUTTON-HEAD SCREW	304SS			4
3	ZH-06F-01	-	MOUNTING FLANGE	PC	5VA	LIGHT GRAY	2
4	ZH-06064BI-01	-	HINGED BASE W/INSERTS				1
4.1	ZH-06064B-01	-	BASE, HINGED	PC	5VA	LIGHT GRAY	1
4.2	INSERTS-4	-	SELF-TAPPING INSERT: 10-32 UNF X .296 LG.	BRASS 360			12
4.3	LABEL-104	-	UL LABEL				1
5	ZH-06061CG-01	-	HINGED COVER W/GASKET				1
5.1	ZH-06061C-01	-	COVER, HINGED	PC	5VA	LIGHT GRAY	1
5.2	ZH-0606G	-	GASKET	NEOPRENE		BLACK	1

BOM Table							
ITEM NO.	PART NUMBER	Rev.	Description	Material	FlameRating	Color	QTY.
11	SCREWS-046		#10-32 X .75 PAN HEAD, PHILLIPS, 316SS, MACHINE SCREW	316 SST			4
12	SCREWS-047	-	#10-32 X .75 TAMPER-RESIST TORX BUTTON-HEAD SCREW	304SS			4
13	ZH-06F-01	-	MOUNTING FLANGE	PC	5VA	LIGHT GRAY	2
14	ZH-06064BI-01	-	HINGED BASE W/INSERTS				1
14.1	ZH-06064B-01	-	BASE, HINGED	PC	5VA	LIGHT GRAY	1
14.2	INSERTS-4	-	SELF-TAPPING INSERT: 10-32 UNF X .296 LG.	BRASS 360			12
14.3	LABEL-104	-	UL LABEL				1
15	ZH-06061CG-02	-	HINGED COVER W/GASKET				1
15.1	ZH-06061C-02	-	COVER, HINGED	PC	5VA	CLEAR	1
15.2	ZH-0606G	-	GASKET	NEOPRENE		BLACK	1

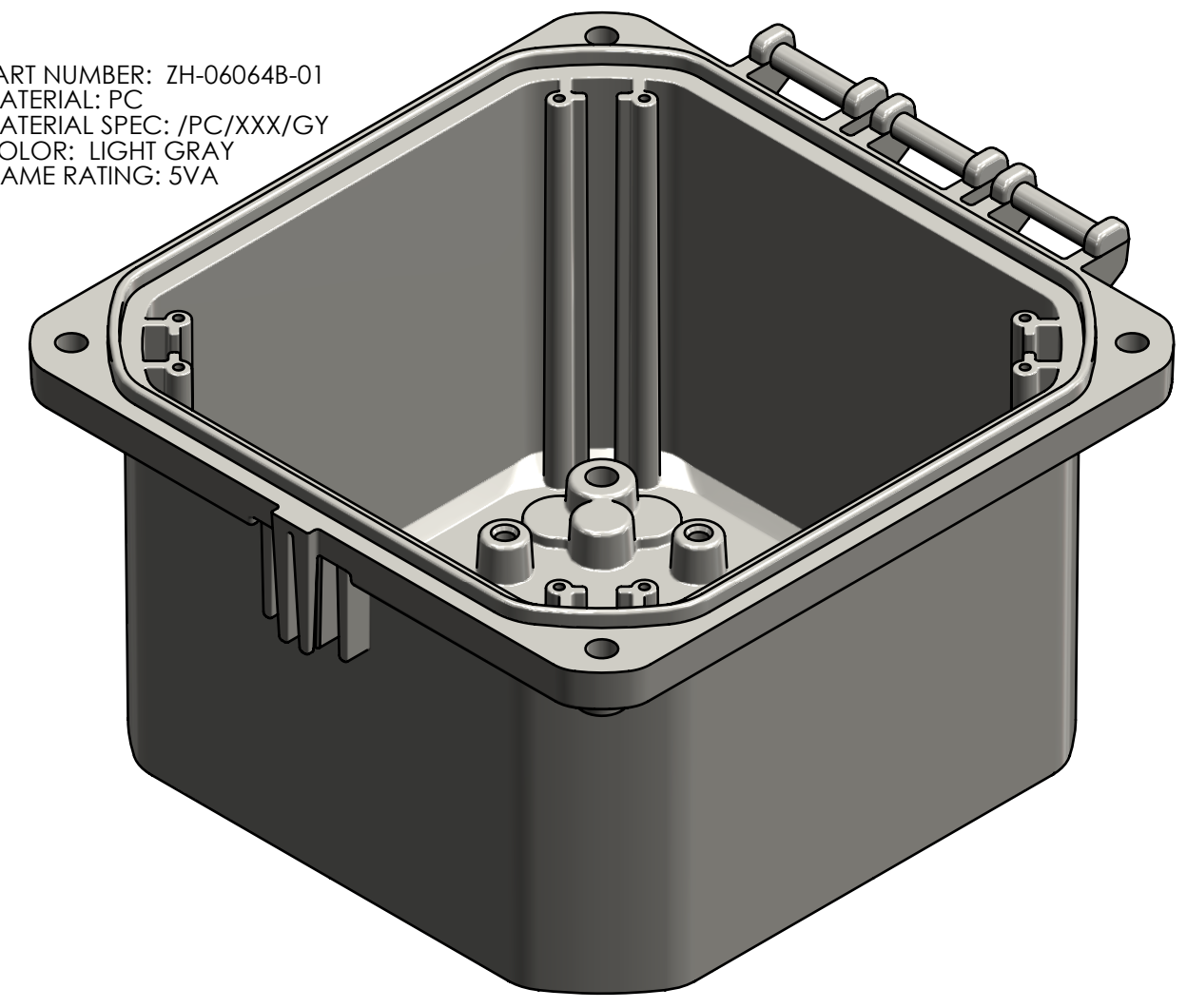


UNLESS OTHERWISE SPECIFIED: DIMENSIONS ARE IN: INCHES[mm] TOLERANCES: ANGULAR: ±2° TWO PLACE DECIMAL: ±.010 THREE PLACE DECIMAL: ±.005 PRINTED GRAPHICS: ±.010		PART NO. ZH-060604-34		 <small>1305 CHESTER RD. PARKWAY AVON, OHIO 44011-1083 U.S.A. PH: 1-800-248-1233, 440-934-0444 FAX: 440-934-0088</small>	
PROPRIETARY AND CONFIDENTIAL THE INFORMATION CONTAINED IN THIS DRAWING IS THE SOLE PROPERTY OF POLYCASE. ANY REPRODUCTION IN PART OR AS A WHOLE WITHOUT THE WRITTEN PERMISSION OF POLYCASE IS PROHIBITED. CAD FILE: ZH-060604		MATERIAL			
FLAME RATING -		SIZE C		HINGED ENCLOSURE	
DRAWN CHECKED		NAME D.M.F.		DATE 7/30/2019 12/31/2999	
SCALE: 1:1.5		SHEET 7 OF 7			

		TOLERANCE CHART																				
DIMENSION RANGE		0	.039	.118	.236	.394	.591	.866	1.181	1.575	2.087	2.756	3.543	4.724	6.299	7.874	9.843	12.402	15.748	19.685	24.803	31.496
TOOL DEPENDENT		±.007	±.007	±.008	±.008	±.009	±.010	±.011	±.012	±.013	±.015	±.017	±.020	±.024	±.028	±.035	±.043	±.051	±.063	±.079	±.098	±.118
NON-TOOL DEPENDENT		±.003	±.004	±.004	±.004	±.005	±.006	±.007	±.008	±.009	±.011	±.013	±.016	±.020	±.024	±.031	±.039	±.047	±.059	±.075	±.094	±.114



PART NUMBER: ZH-06064B-01
MATERIAL: PC
MATERIAL SPEC: /PC/XXX/GY
COLOR: LIGHT GRAY
FLAME RATING: 5VA

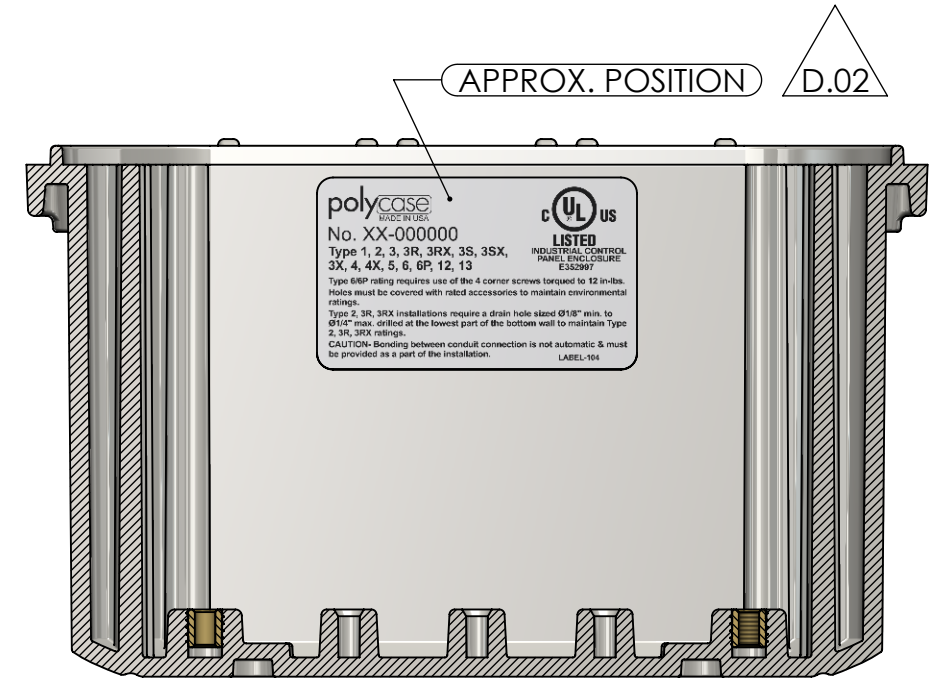


- NOTES:
1. REFER TO SOLID MODEL FOR COMPLETE PART DEFINITION.
2. (INSPECTION DIMENSION)
3. EJECTOR PINS TO BE FLUSH ±.010
4. FLASH .005 MAX
5. GATE TO BE REMOVED FLUSH ±.030

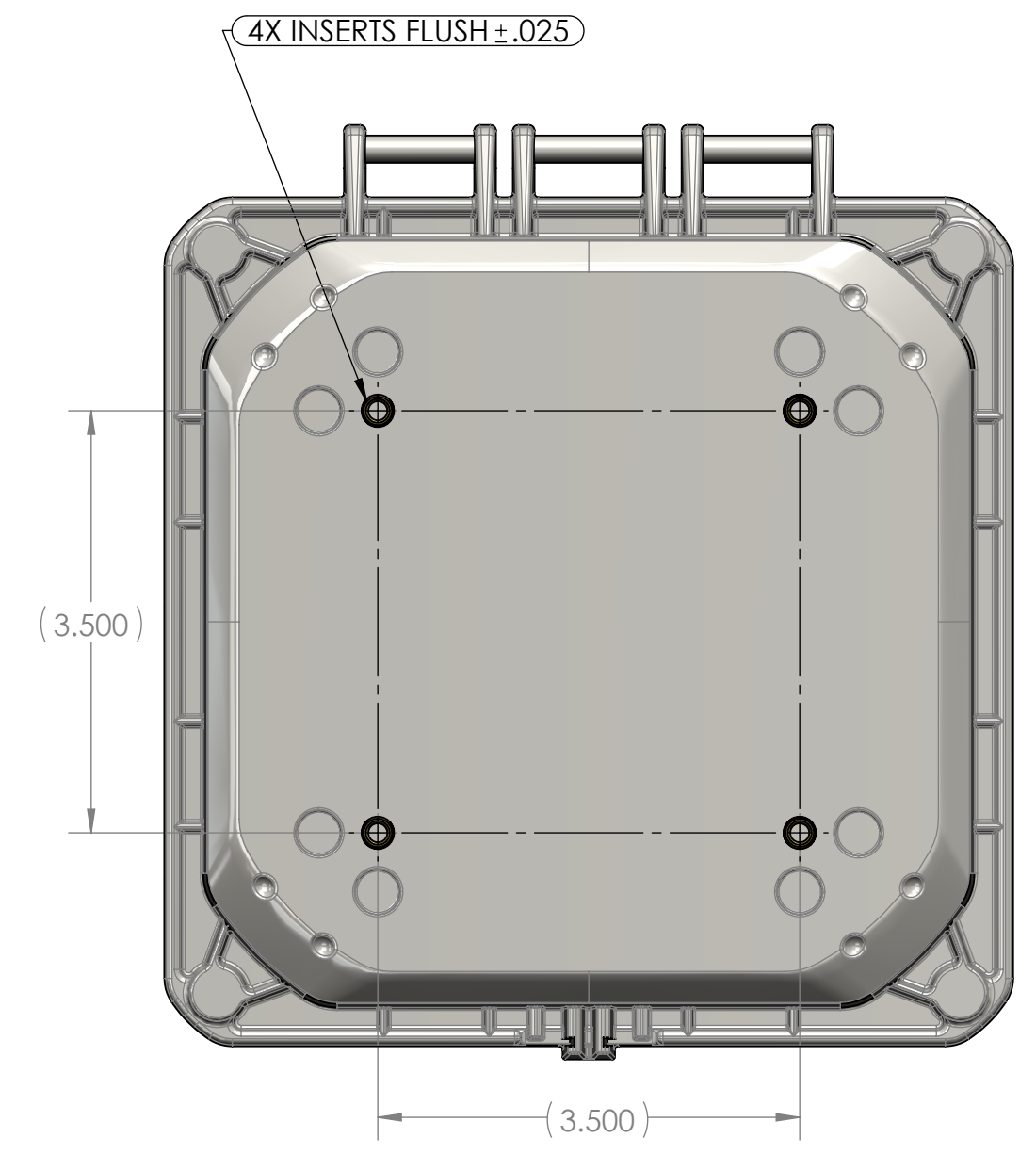
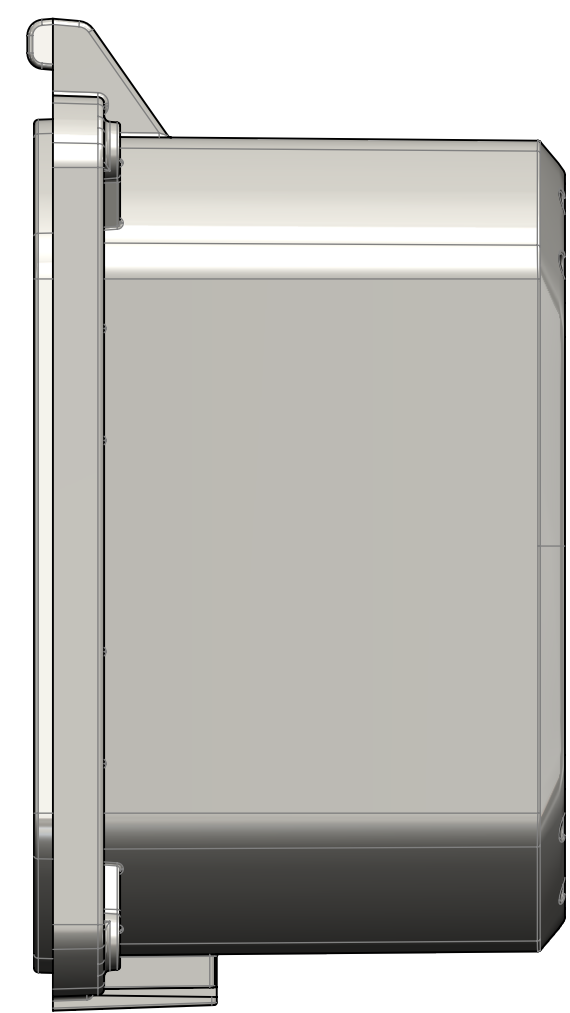
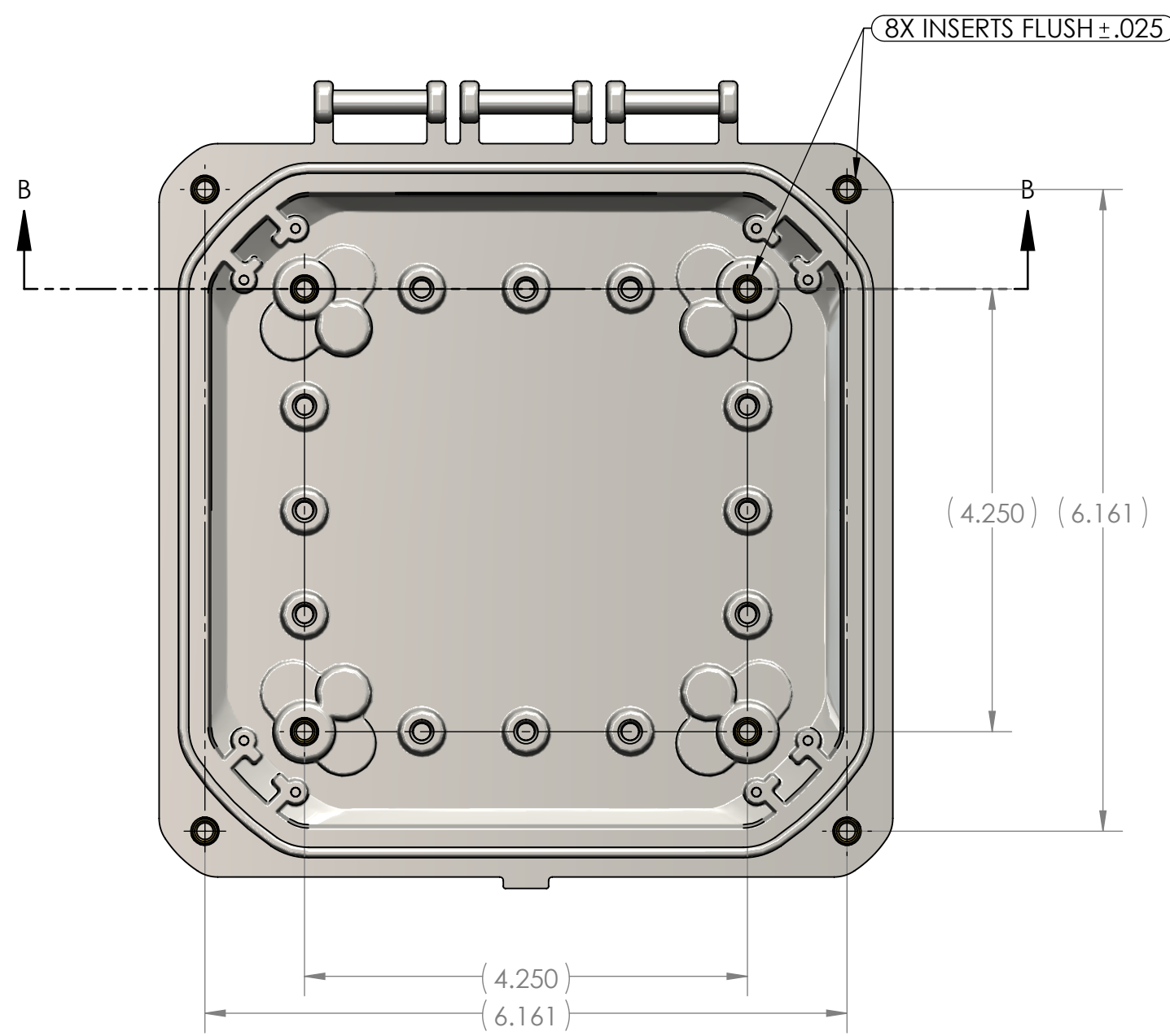
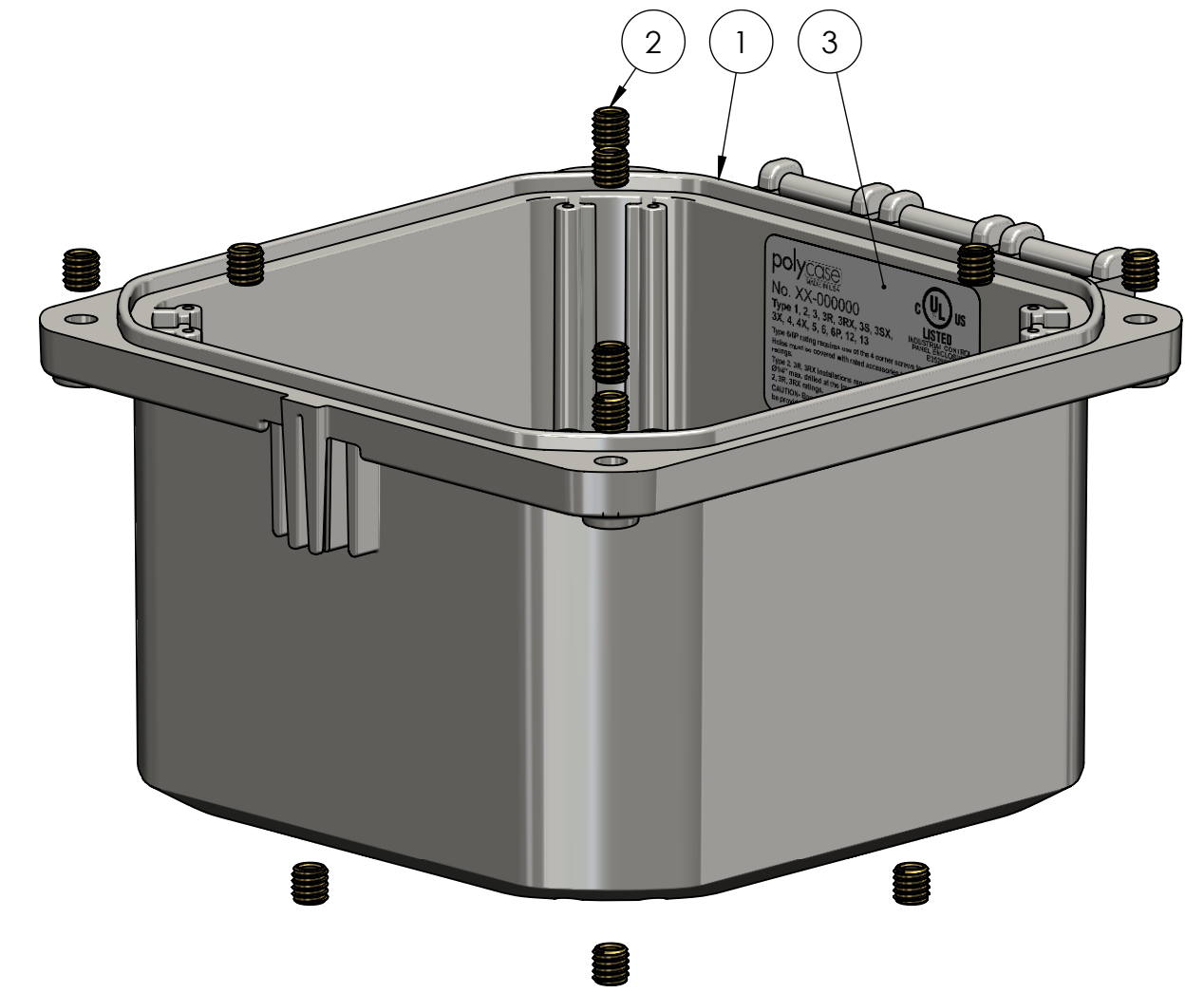
REV.	DESCRIPTION	ZONE	BY	APPR'D	DATE
-	PRODUCTION RELEASE		D.M.F.	D.M.F.	5/7/2020
D.01	RELEASED FOR TOOLING, .148 WAS .128	D4	D.M.F.		10/11/2019
D	RELEASED FOR QUOTE		D.M.F.	B.M.B.	09/05/2019

UNLESS OTHERWISE SPECIFIED: DIMENSIONS ARE IN: INCHES[mm] TOLERANCES: ANGULAR: ±° TWO PLACE DECIMAL: ± THREE PLACE DECIMAL: ± PRINTED GRAPHICS: ±.010		PART NO. ZH-06064B-01		 <small>1305 CHESTER RD. PARKWAY AVON, OHIO 44011-1083 U.S.A. PH: 1-800-548-1233 440-934-0444 FAX: 440-934-0088</small>	
PROPRIETARY AND CONFIDENTIAL THE INFORMATION CONTAINED IN THIS DRAWING IS THE SOLE PROPERTY OF POLYCASE. ANY REPRODUCTION IN PART OR AS A WHOLE WITHOUT THE WRITTEN PERMISSION OF POLYCASE IS PROHIBITED. CAD FILE: ZH-06064B		MATERIAL PC			
FLAME RATING 5VA		SIZE C		BASE, HINGED	
DRAWN CHECKED		NAME DATE		REV	
		D.M.F. 7/30/2019		1/14/2019	
		SCALE: 1:1.5		SHEET 1 OF 1	

BOM Table							
ITEM NO.	PART NUMBER	Rev.	Description	Material	FlameRating	Color	ZH-06064BI-01/QTY.
1	ZH-06064B-01	-	BASE, HINGED	PC	5VA	LIGHT GRAY	1
2	INSERTS-4	-	SELF-TAPPING INSERT: 10-32 UNF X .296 LG.	BRASS 360			12
3	LABEL-104	-	UL LABEL				1



SECTION B-B



REV.	DESCRIPTION	ZONE	BY	APPR'D	DATE
-	PRODUCTION RELEASE				5/7/2020
D.02	ADDED LABEL	F6			12/4/2019
D.01	REVISED BASE				10/11/2019
D	RELEASED FOR QUOTE				09/05/2019

UNLESS OTHERWISE SPECIFIED:
 DIMENSIONS ARE IN: INCHES[mm]
 TOLERANCES: ANGULAR: ±2°
 TWO PLACE DECIMAL: ±.010
 THREE PLACE DECIMAL: ±.005
 PRINTED GRAPHICS: ±.010

PART NO.
 ZH-06064BI-01
 MATERIAL

FLAME RATING
 SIZE
 HINGED BASE W/INSERTS



SCALE: 1:1.5

SHEET 1 OF 1

REVISIONS

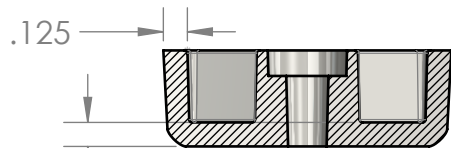
PROPRIETARY AND CONFIDENTIAL
 THE INFORMATION CONTAINED IN THIS
 DRAWING IS THE SOLE PROPERTY OF
 POLYCASE. ANY REPRODUCTION IN PART
 OR AS A WHOLE WITHOUT THE WRITTEN
 PERMISSION OF POLYCASE IS PROHIBITED.
 CAD FILE: ZH-06064BI

DRAWN
 CHECKED

NAME
 D.M.F.

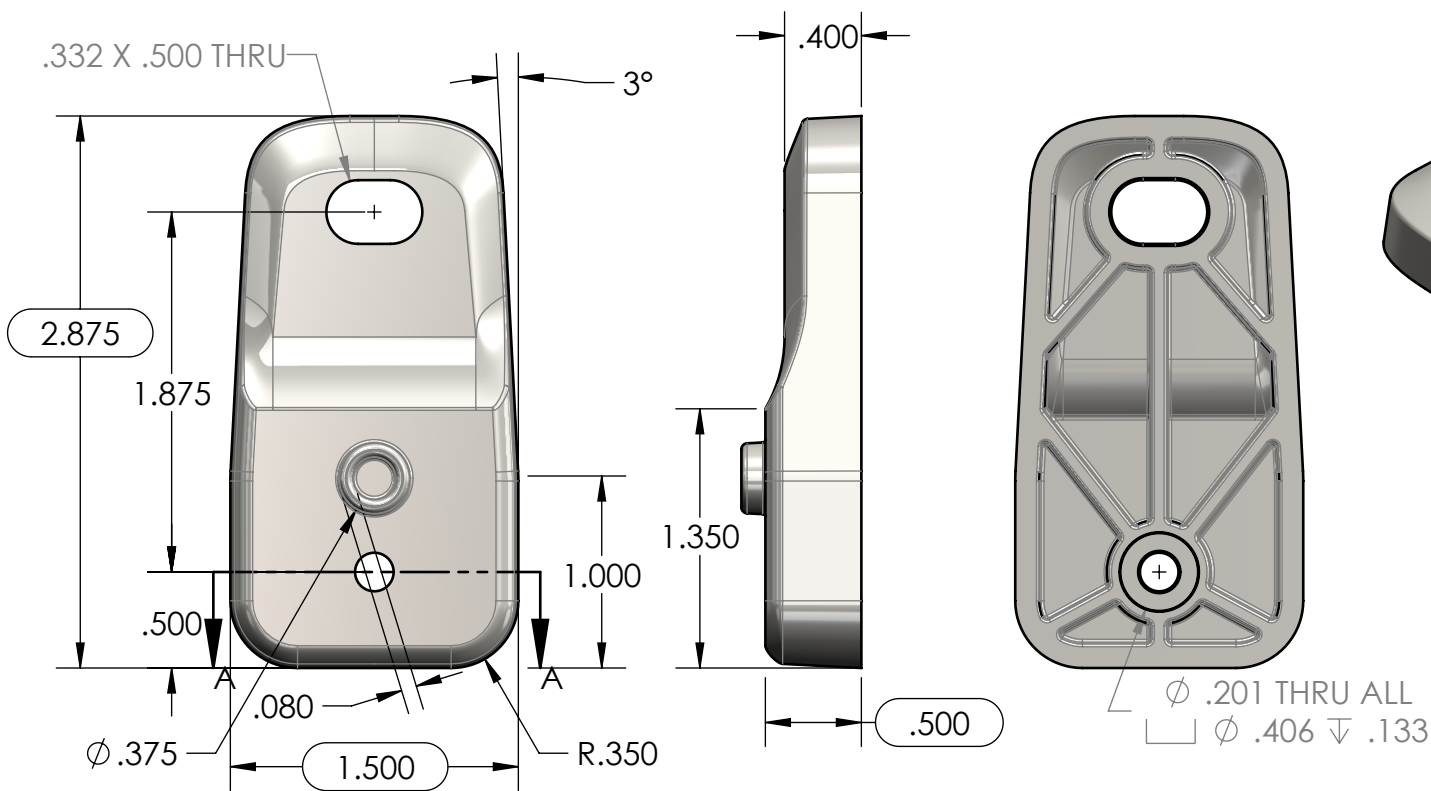
DATE
 7/30/2019

12/31/2999




SECTION A-A

TOLERANCE CHART												
DIMENSION RANGE	0	.039	.118	.236	.394	.591	.866	1.181	1.575	2.087	2.756	3.543
	.039	.118	.236	.394	.591	.866	1.181	1.575	2.087	2.756	3.543	4.724
TOOL DEPENDENT	±.007	±.007	±.008	±.008	±.009	±.010	±.011	±.012	±.013	±.015	±.017	±.020
NON-TOOL DEPENDENT	±.003	±.004	±.004	±.004	±.005	±.006	±.007	±.008	±.009	±.011	±.013	±.016



PART NUMBER: ZH-01F-01
 MATERIAL: PC
 MATERIAL SPEC: /PC/XXX/GY
 COLOR: LIGHT GRAY
 FLAME RATING: 5VA

- NOTES:
- REFER TO SOLID MODEL FOR COMPLETE PART DEFINITION.
 - (INSPECTION DIMENSION)
 - EJECTOR PINS TO BE FLUSH ±.010
 - FLASH .005 MAX
 - GATE TO BE REMOVED FLUSH ±.015

UNLESS OTHERWISE SPECIFIED: DIMENSIONS ARE IN: INCHES[mm] TOLERANCES: ANGULAR: ±2° TWO PLACE DECIMAL: ±.010 THREE PLACE DECIMAL: ±.005 PRINTED GRAPHICS: ±.010		PART NO. ZH-01F-01		 <small>1305 CHESTER IND. PARKWAY AVON, OHIO 44011-1083 U.S.A. PH# 1-800-248-1233, 440-934-0444 FAX# 440-934-0088</small>	
PROPRIETARY AND CONFIDENTIAL THE INFORMATION CONTAINED IN THIS DRAWING IS THE SOLE PROPERTY OF POLYCASE. ANY REPRODUCTION IN PART OR AS A WHOLE WITHOUT THE WRITTEN PERMISSION OF POLYCASE IS PROHIBITED. CAD FILE: ZH-01F		MATERIAL PC			
		FLAME RATING 5VA		SIZE A	MOUNTING FOOT
		DRAWN D.M.F. 10/3/2019 CHECKED B.M.B. 1/15/2019		SCALE: 1:1	REV -

REV.	DESCRIPTION	ZONE	BY	APPR'D	DATE
REVISIONS					

5

4

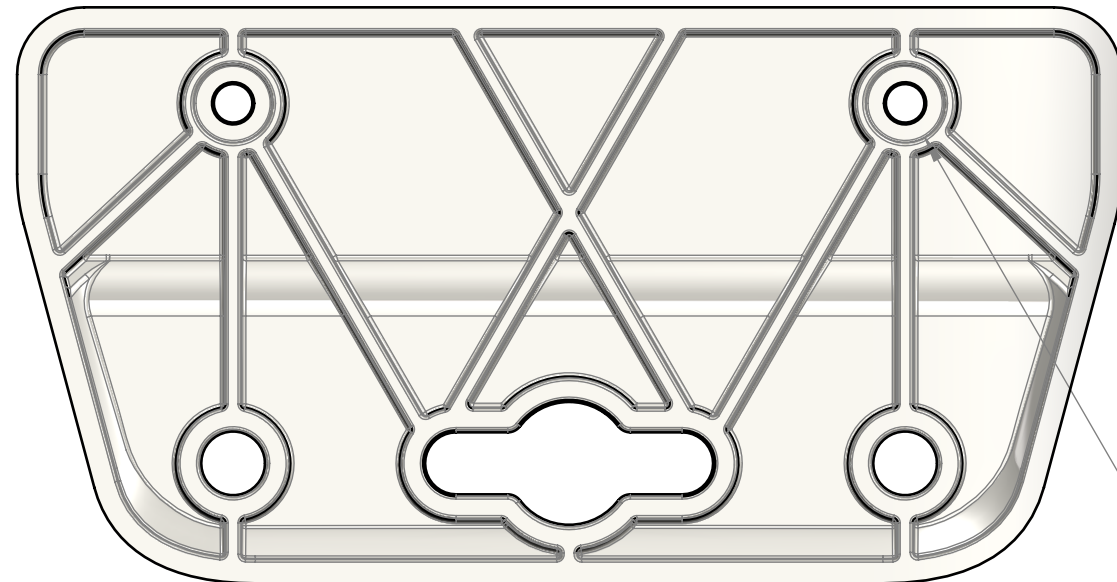
3

2

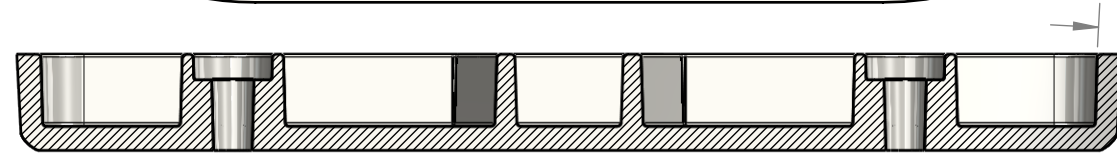
1

SHEET 1 OF 1

8 7 6 5 4 3 2 1



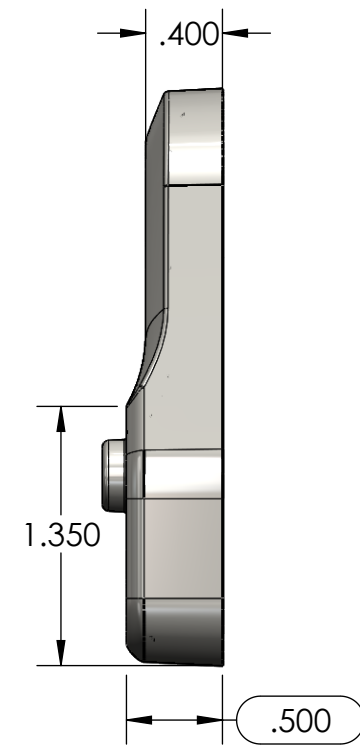
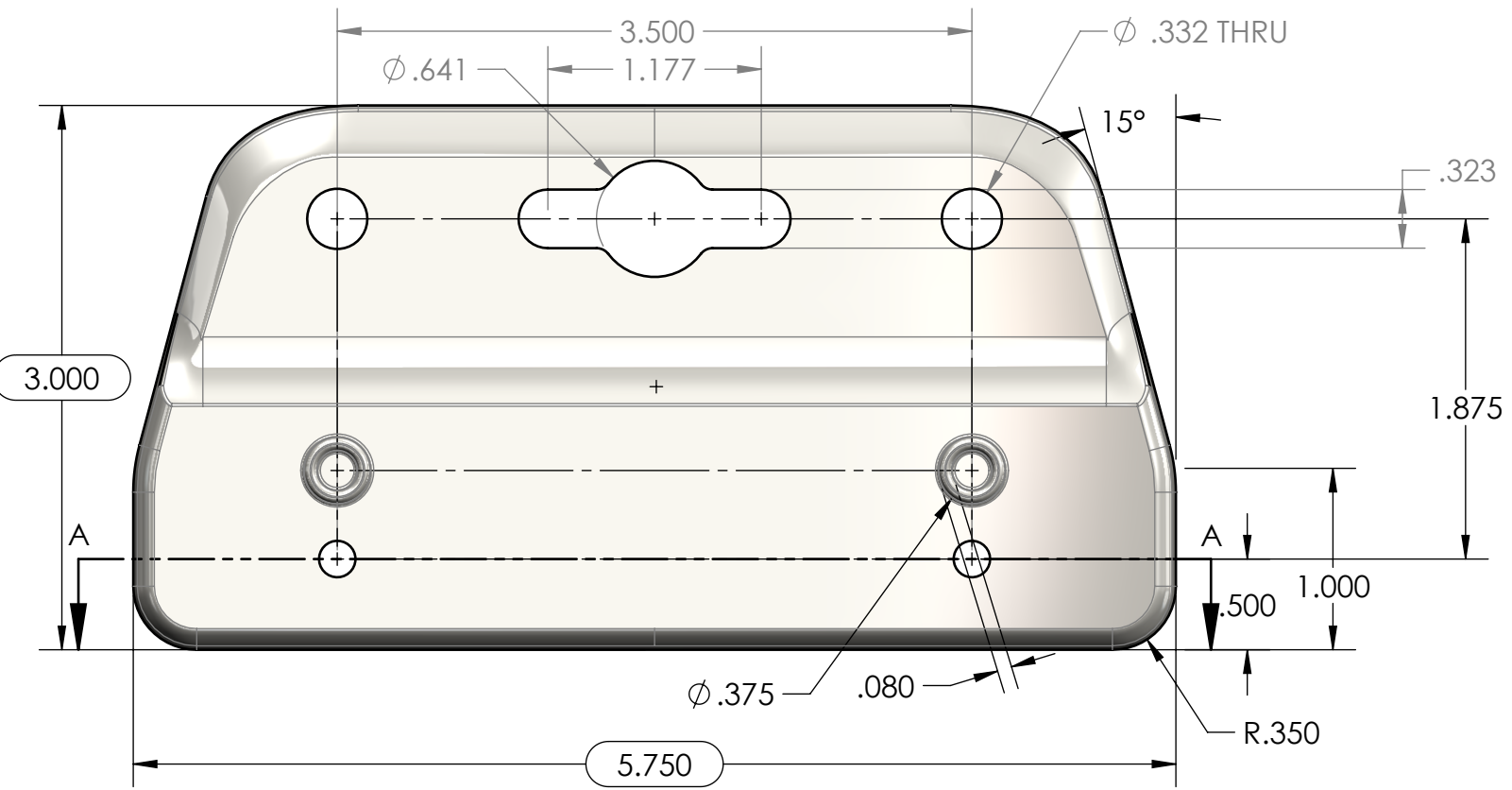
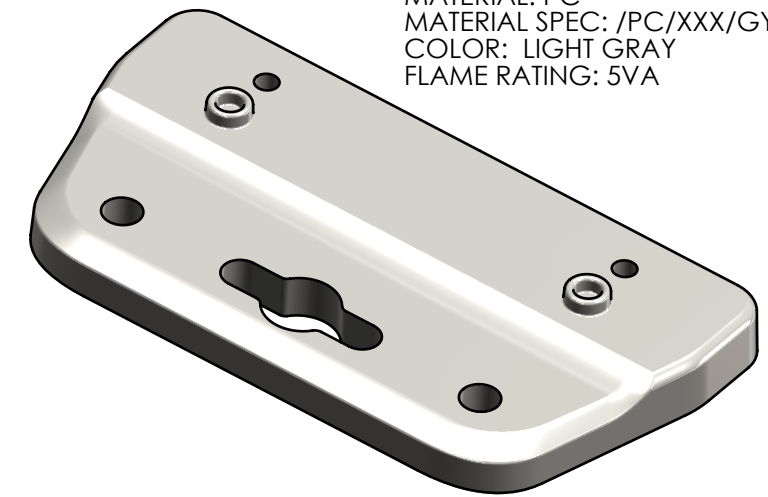
Ø .201 THRU ALL
 □ Ø .406 ▽ .133



SECTION A-A

TOLERANCE CHART																
DIMENSION RANGE	0	.039	.118	.236	.394	.591	.866	1.181	1.575	2.087	2.756	3.543	4.724	6.299	7.874	
	.039	.118	.236	.394	.591	.866	1.181	1.575	2.087	2.756	3.543	4.724	6.299	7.874	9.843	
TOOL DEPENDENT	±.007	±.007	±.008	±.008	±.009	±.010	±.011	±.012	±.013	±.015	±.017	±.020	±.024	±.028	±.035	
NON-TOOL DEPENDENT	±.003	±.004	±.004	±.004	±.005	±.006	±.007	±.008	±.009	±.011	±.013	±.016	±.020	±.024	±.031	

PART NUMBER: ZH-06F-01
 MATERIAL: PC
 MATERIAL SPEC: /PC/XXX/GY
 COLOR: LIGHT GRAY
 FLAME RATING: 5VA



- NOTES:
 1. REFER TO SOLID MODEL FOR COMPLETE PART DEFINITION.
 2. (INSPECTION DIMENSION)
 3. EJECTOR PINS TO BE FLUSH ±.010
 4. FLASH .005 MAX
 5. GATE TO BE REMOVED FLUSH ±.015

REV.	DESCRIPTION	ZONE	BY	APPR'D	DATE
-	PRODUCTION RELEASE		D.M.F.	D.M.F.	5/7/2020
D.01	RELEASED FOR TOOLING		D.M.F.		10/11/2019
D	RELEASED FOR QUOTE		D.M.F.	B.M.B.	9/5/2019

UNLESS OTHERWISE SPECIFIED:
 DIMENSIONS ARE IN: INCHES [mm]
 TOLERANCES: ANGULAR: ±2°
 TWO PLACE DECIMAL: ±.010
 THREE PLACE DECIMAL: ±.005
 PRINTED GRAPHICS: ±.010

PROPRIETARY AND CONFIDENTIAL
 THE INFORMATION CONTAINED IN THIS
 DRAWING IS THE SOLE PROPERTY OF
 POLYCASE. ANY REPRODUCTION IN PART
 OR AS A WHOLE WITHOUT THE WRITTEN
 PERMISSION OF POLYCASE IS PROHIBITED.
 CAD FILE: ZH-06F

PART NO. ZH-06F-01		
MATERIAL PC		
FLAME RATING 5VA		
DRAWN	NAME	DATE
CHECKED	-	6/19/2019

polycase
 1305 CHESTER IND. PARKWAY AVON, OHIO 44011-1083 U.S.A.
 PH#: 1-800-248-1233, 440-934-0444 FAX#: 440-934-0088

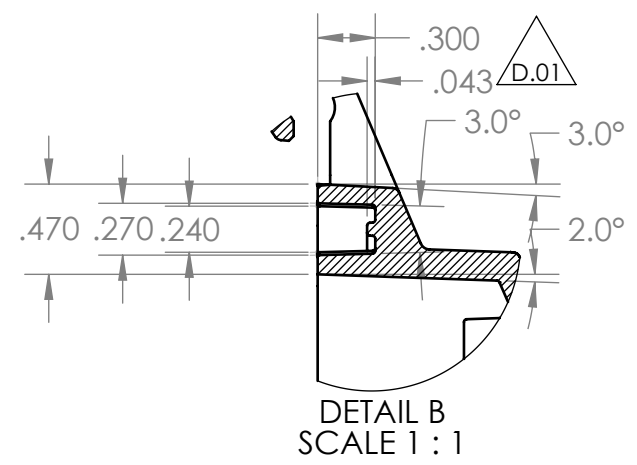
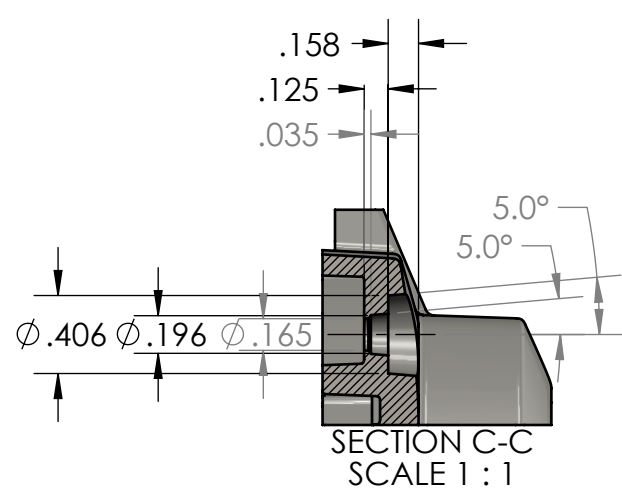
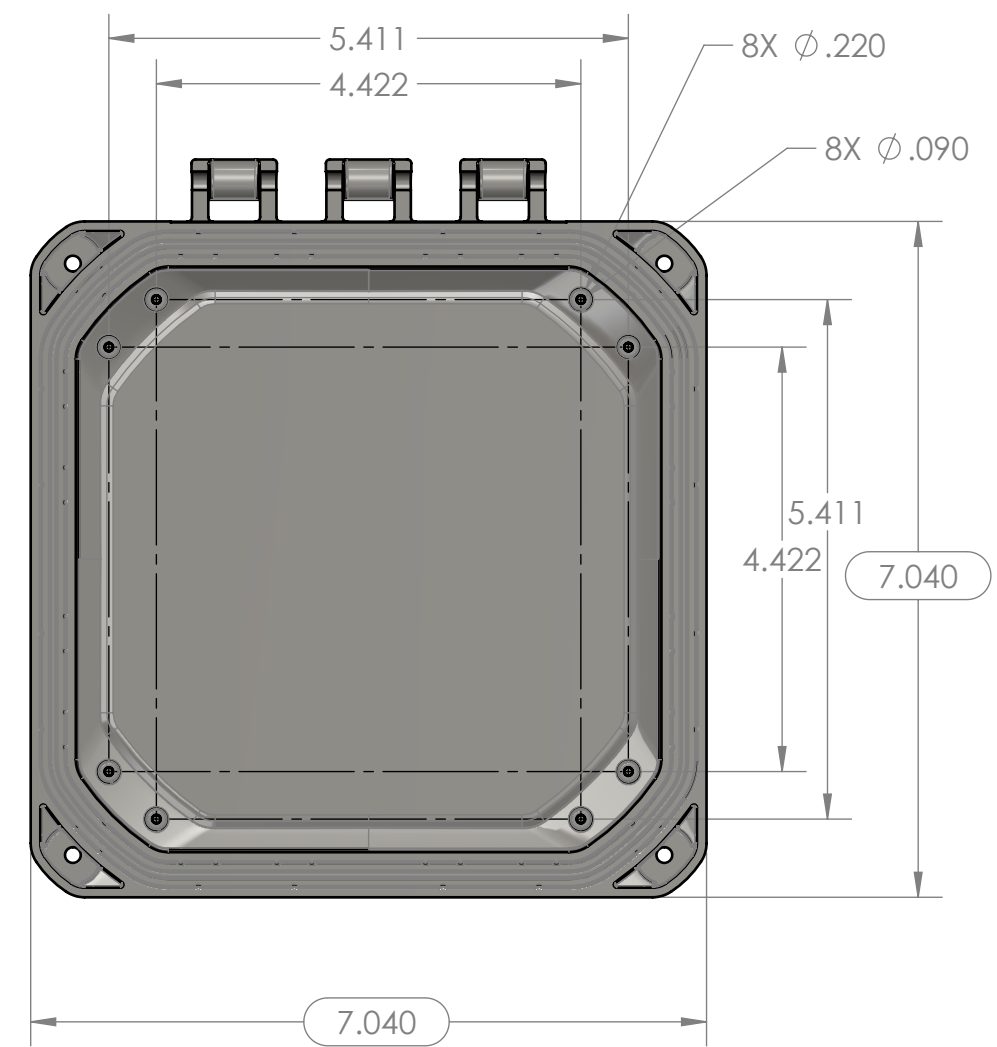
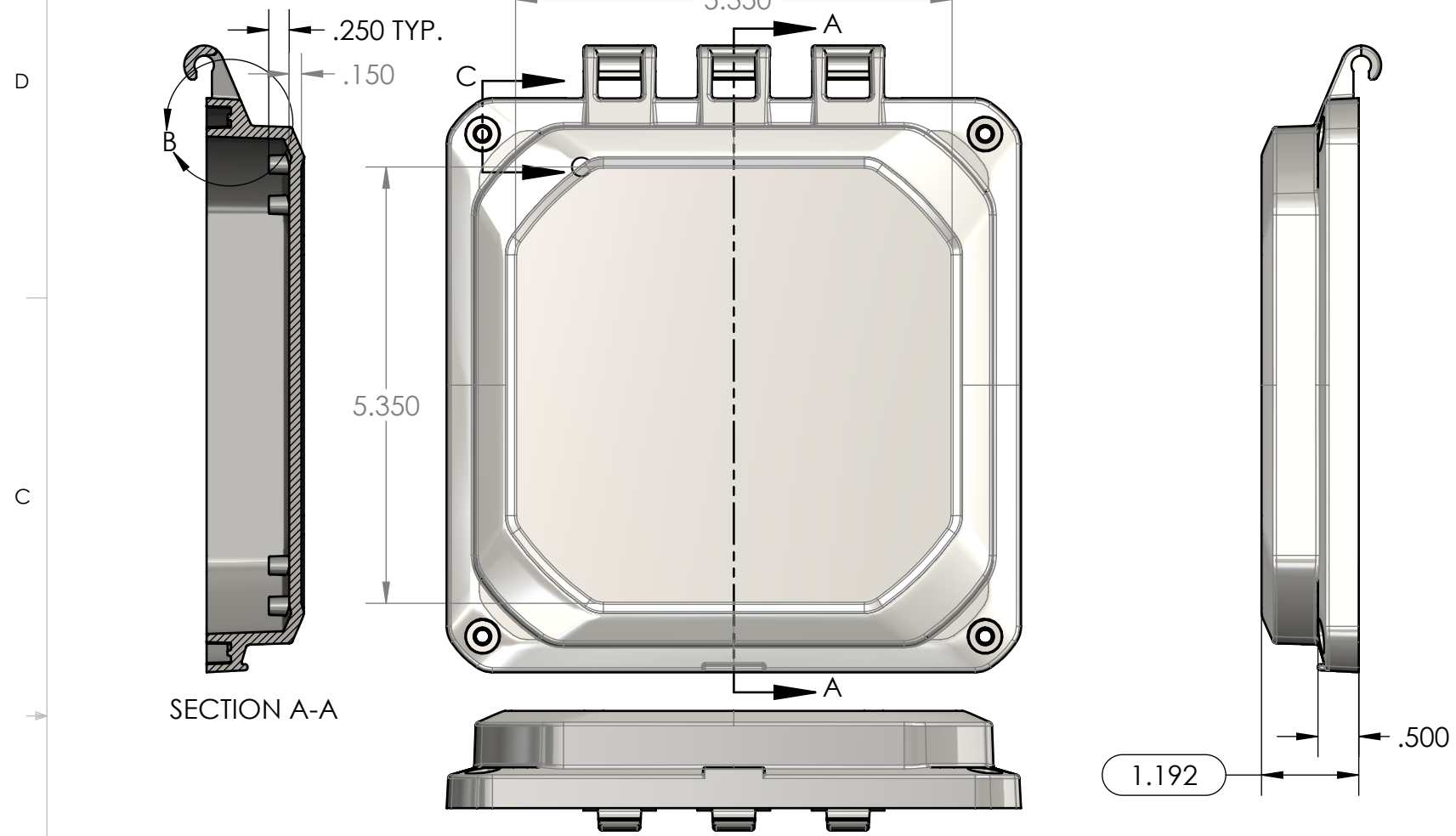
SIZE **B**
 MOUNTING FLANGE
 REV -

SCALE: 1:1

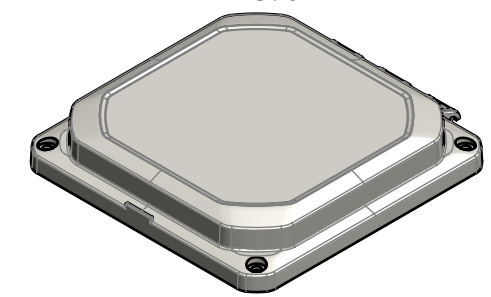
SHEET 1 OF 1

8 7 6 5 4 3 2 1

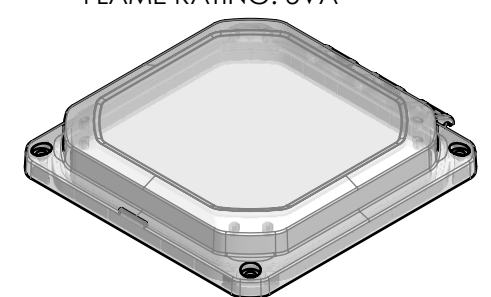
TOLERANCE CHART																
DIMENSION RANGE	0	.039	.118	.236	.394	.591	.866	1.181	1.575	2.087	2.756	3.543	4.724	6.299	7.874	9.843
TOOL DEPENDENT	±.007	±.007	±.008	±.008	±.009	±.010	±.011	±.012	±.013	±.015	±.017	±.020	±.024	±.028	±.035	.043
NON-TOOL DEPENDENT	±.003	±.004	±.004	±.004	±.005	±.006	±.007	±.008	±.009	±.011	±.013	±.016	±.020	±.024	±.031	.039



PART NUMBER: ZH-06061C-01
 MATERIAL: PC
 MATERIAL SPEC: /PC/XXX/GY
 COLOR: LIGHT GRAY
 FLAME RATING: 5VA



PART NUMBER: ZH-06061C-02
 MATERIAL: PC
 MATERIAL SPEC: /PC/XXX/CL
 COLOR: CLEAR
 FLAME RATING: 5VA



- NOTES:
 1. REFER TO SOLID MODEL FOR COMPLETE PART DEFINITION.
 2. (INSPECTION DIMENSION)
 3. EJECTOR PINS TO BE FLUSH ±.010
 4. FLASH .005 MAX
 5. GATE TO BE REMOVED FLUSH ±.015

REV.	DESCRIPTION	ZONE	BY	APPR'D	DATE
-	PRODUCTION RELEASE		D.M.F.	D.M.F.	5/7/2020
D.01	RELEASED FOR TOOLING, .043 WAS .063	B5	D.M.F.		10/11/2019
D	RELEASED FOR QUOTE		D.M.F.	B.M.B.	09/05/2019

UNLESS OTHERWISE SPECIFIED:
 DIMENSIONS ARE IN: INCHES[mm]
 TOLERANCES: ANGULAR: ±2°
 TWO PLACE DECIMAL: ±.010
 THREE PLACE DECIMAL: ±.005
 PRINTED GRAPHICS: ±.010

PROPRIETARY AND CONFIDENTIAL
 THE INFORMATION CONTAINED IN THIS
 DRAWING IS THE SOLE PROPERTY OF
 POLYCASE. ANY REPRODUCTION IN PART
 OR AS A WHOLE WITHOUT THE WRITTEN
 PERMISSION OF POLYCASE IS PROHIBITED.
 CAD FILE: ZH-06061C

PART NO. ZH-06061C-01		
MATERIAL PC		
FLAME RATING 5VA	SIZE B	COVER, HINGED
DRAWN	NAME	DATE
CHECKED	-	6/19/2019
SCALE: 1:2		SHEET 1 OF 1

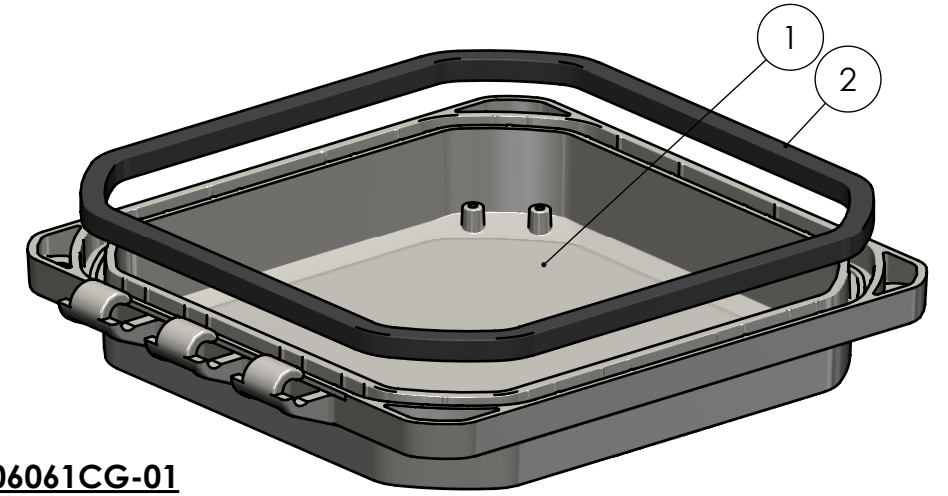
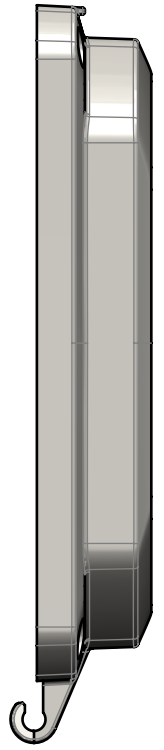
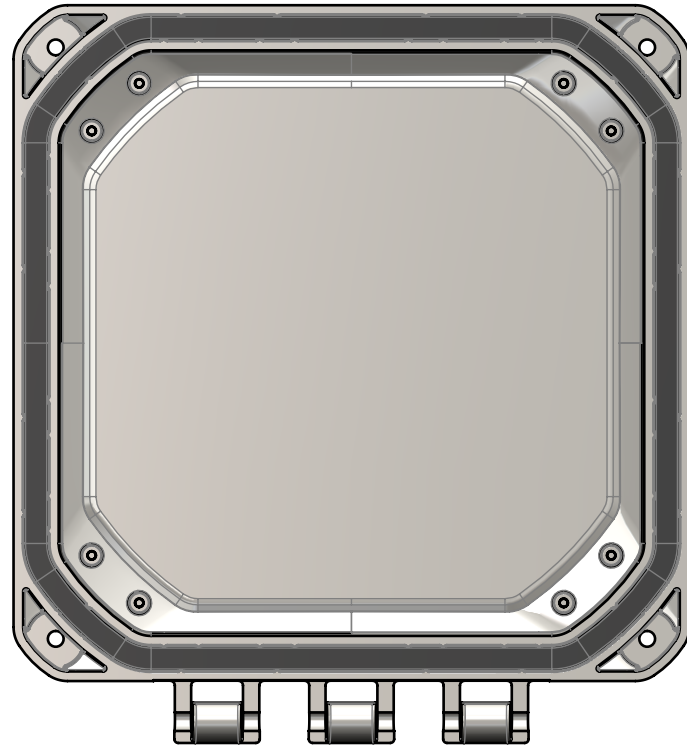
polycase
 1305 CHESTER IND. PARKWAY AVON, OHIO 44011-1083 U.S.A.
 PH#: 1-800-248-1233, 440-934-0444 FAX#: 440-934-0088

COVER, HINGED

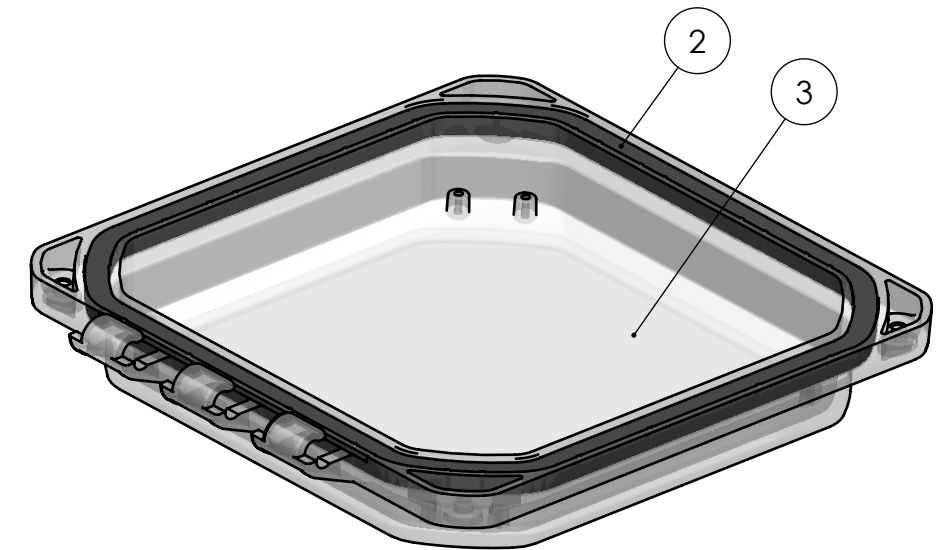
REV
-

BOM Table

ITEM NO.	PART NUMBER	Rev.	Description	Material	FlameRating	Color	ZH-06061CG-01/QTY.	ZH-06061CG-02/QTY.
1	ZH-06061C-01	-	COVER, HINGED	PC	5VA	LIGHT GRAY	1	-
2	ZH-0606G	-	GASKET	NEOPRENE		BLACK	1	1
3	ZH-06061C-02	-	COVER, HINGED	PC	5VA	CLEAR	-	1



ZH-06061CG-01



ZH-06061CG-02

REV.	DESCRIPTION	ZONE	BY	APPR'D	DATE
-	PRODUCTION RELEASE		D.M.F.	D.M.F.	5/7/2020
D.01	REVISED COVER		D.M.F.		10/11/2019
D	RELEASED FOR QUOTE		D.M.F.	B.M.B.	09/05/2019

UNLESS OTHERWISE SPECIFIED:
 DIMENSIONS ARE IN: INCHES[mm]
 TOLERANCES: ANGULAR: ±2°
 TWO PLACE DECIMAL: ±.010
 THREE PLACE DECIMAL: ±.005
 PRINTED GRAPHICS: ±.010

PROPRIETARY AND CONFIDENTIAL
 THE INFORMATION CONTAINED IN THIS
 DRAWING IS THE SOLE PROPERTY OF
 POLYCASE. ANY REPRODUCTION IN PART
 OR AS A WHOLE WITHOUT THE WRITTEN
 PERMISSION OF POLYCASE IS PROHIBITED.
 CAD FILE: ZH-06061CG

PART NO. ZH-06061CG-01	
MATERIAL	
FLAME RATING	SIZE
	B
DRAWN	NAME
CHECKED	DATE
	7/30/2019
	12/31/2999

polycase
 1305 CHESTER IND. PARKWAY AVON, OHIO 44011-1083 U.S.A.
 PH#: 1-800-248-1233, 440-934-0444 FAX#: 440-934-0088

HINGED COVER W/GASKET REV
 -

SCALE: 1:2 SHEET 1 OF 1