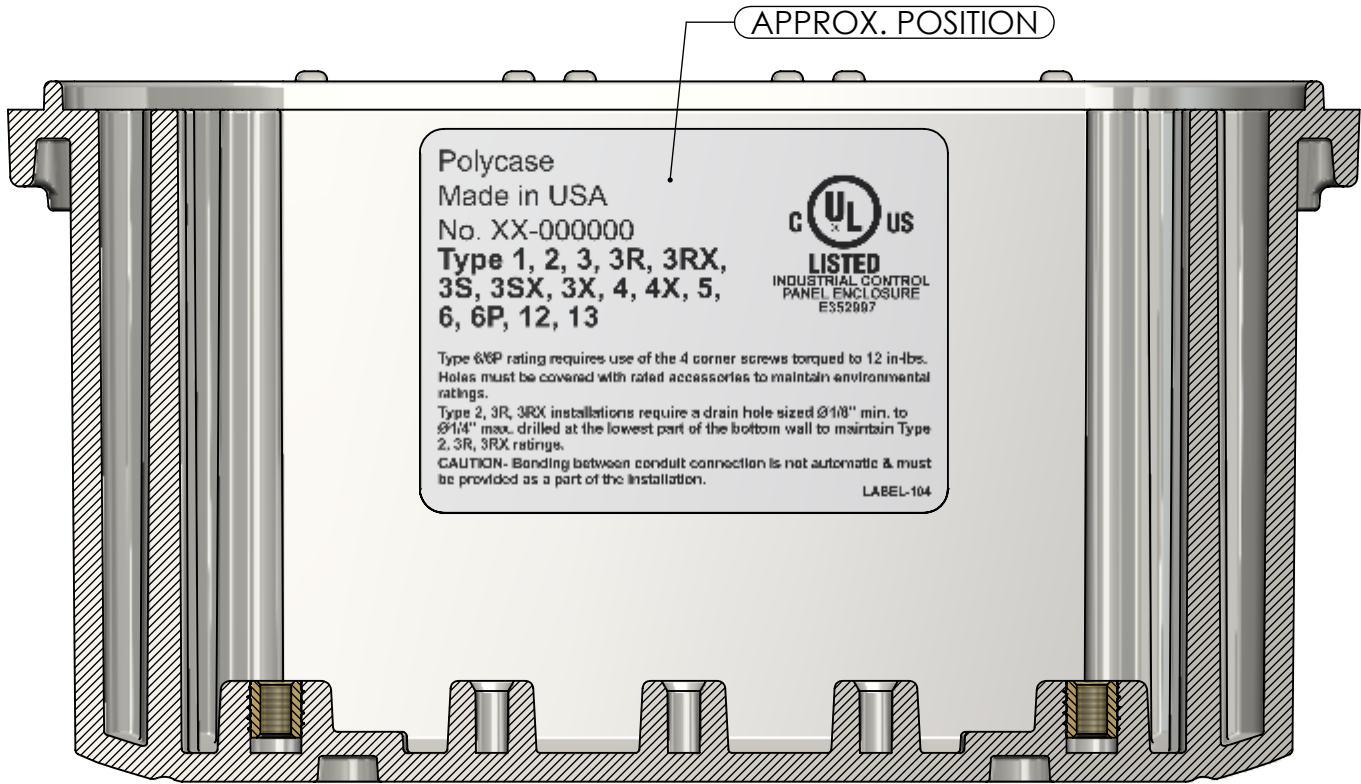
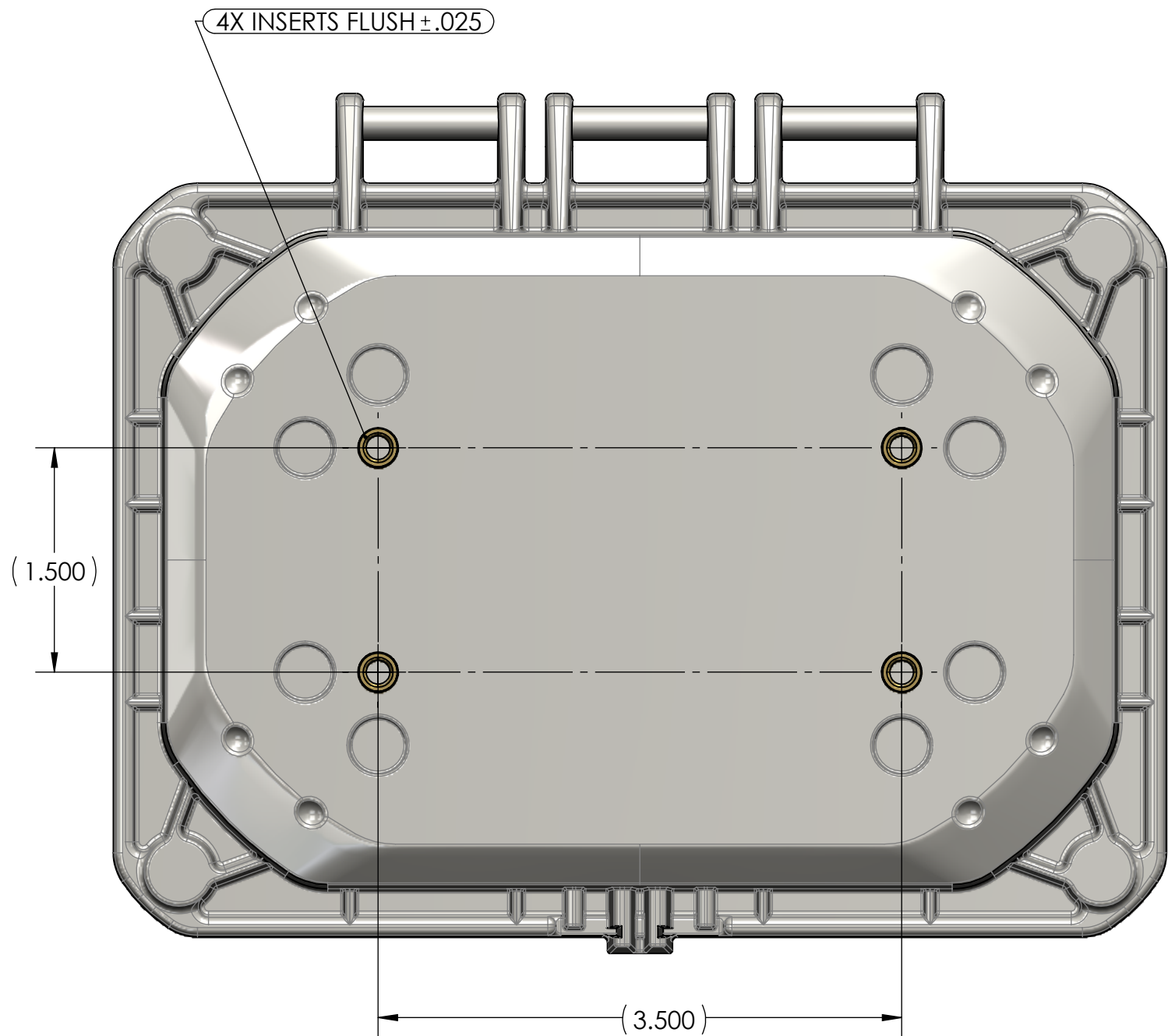
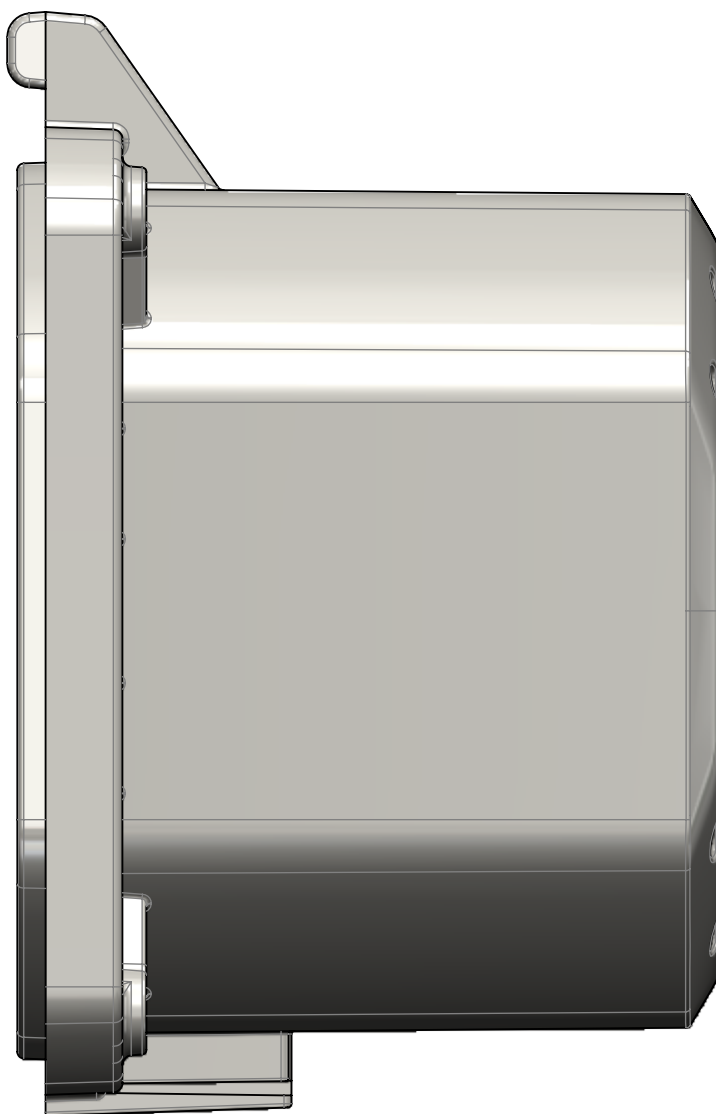
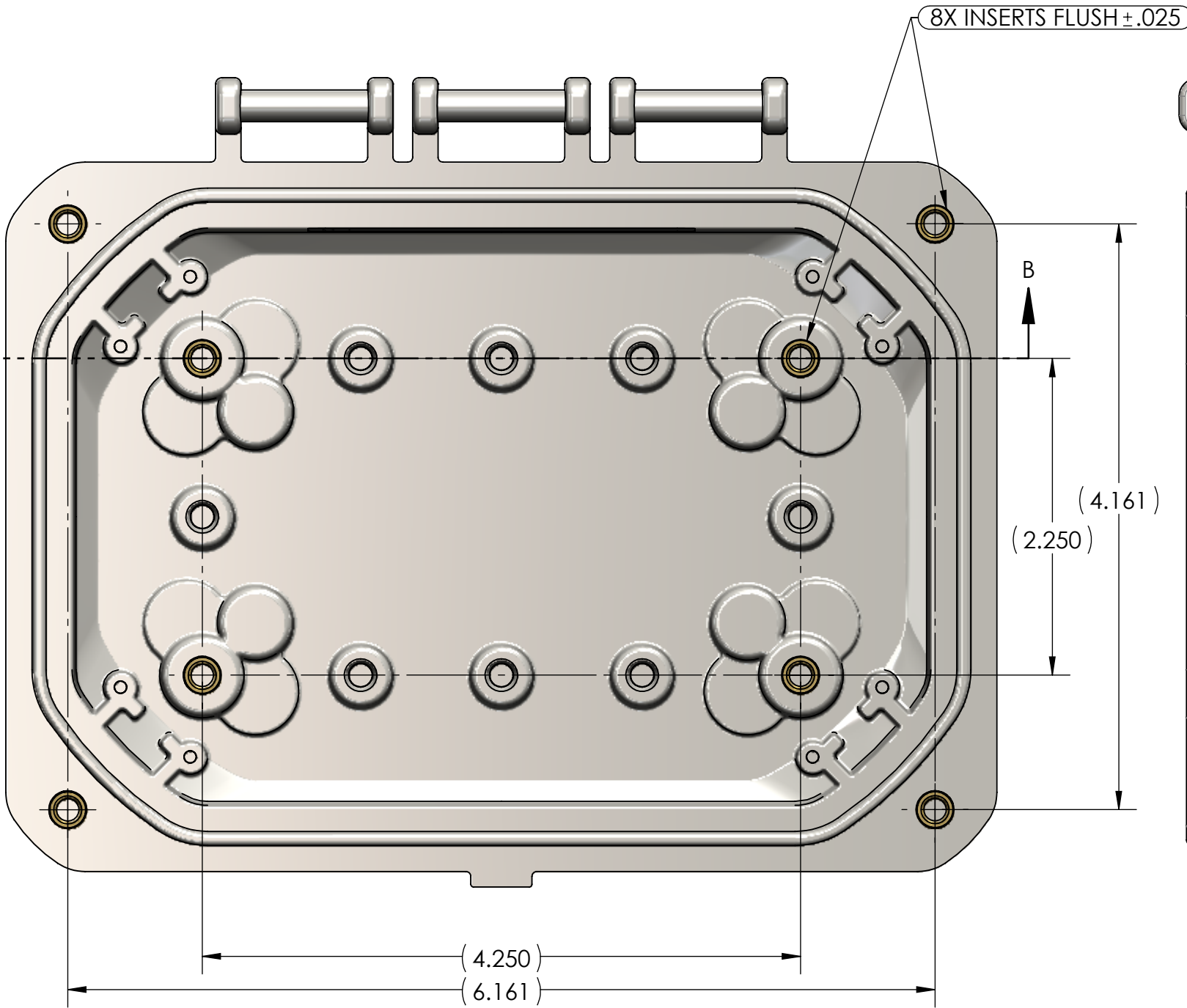
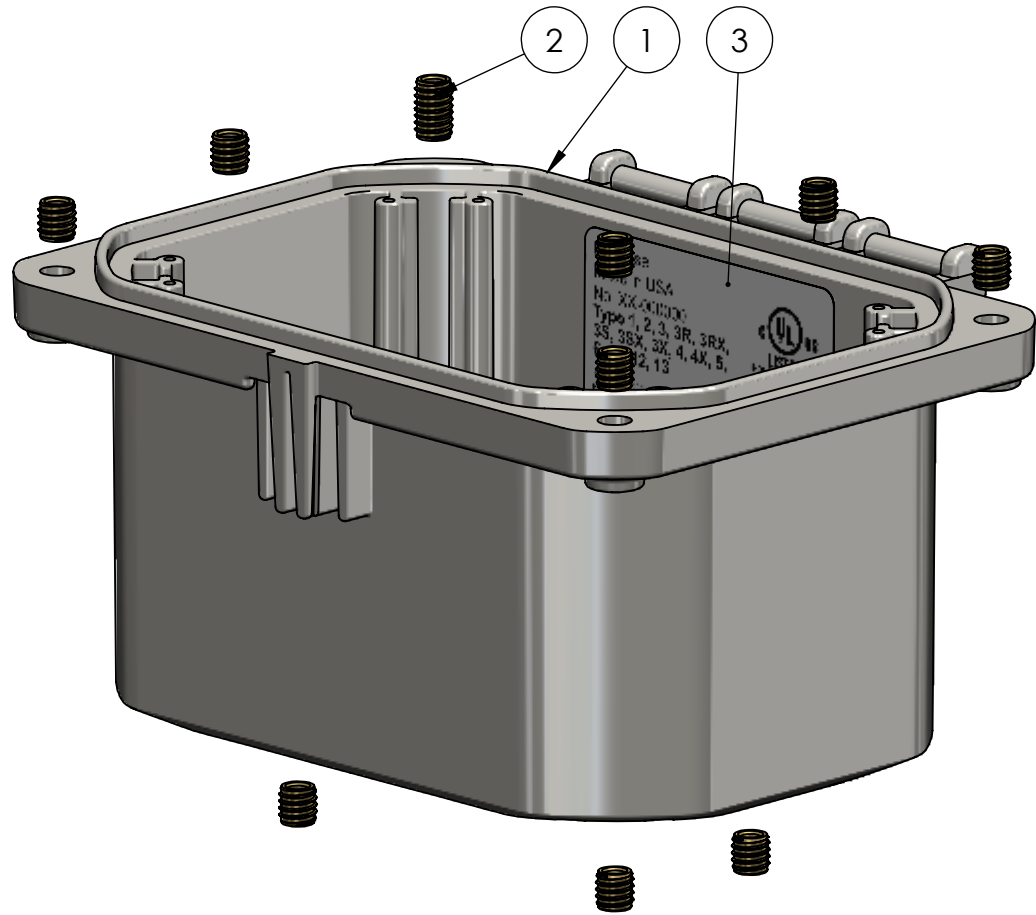


BOM Table						
ITEM NO.	PART NUMBER	Rev.	Description	Material	FlameRating	Color
1	ZH-06043B-01	1	BASE, HINGED	PC	UL94-5VA	LIGHT GRAY
2	INSERTS-4	0	SELF-TAPPING INSERT: 10-32 UNF X .296 LG.	BRASS 360		
3	LABEL-104	0	UL LABEL			



SECTION B-B



1	UPDATED FLAME RATING		Douglas French	7-29-2024
0			Douglas French	9-6-2022
REV.	COMMENT	ZONE	REVISED BY	CREATION DATE
REVISIONS				

UNLESS OTHERWISE SPECIFIED: DIMENSIONS ARE IN: INCHES[mm] TOLERANCES: ANGULAR: $\pm 2^\circ$ TWO PLACE DECIMAL: $\pm .010$ THREE PLACE DECIMAL: $\pm .005$ PRINTED GRAPHICS: $\pm .010$			
PROPRIETARY AND CONFIDENTIAL THE INFORMATION CONTAINED IN THIS DRAWING IS THE SOLE PROPERTY OF POLYCASE. ANY REPRODUCTION IN PART OR AS A WHOLE WITHOUT THE WRITTEN PERMISSION OF POLYCASE IS PROHIBITED. CAD FILE: ZH-06043BI			

PART NO. ZH-06043BI-01		
MATERIAL		
FLAME RATING		
DRAWN	NAME	DATE
CHECKED	D.M.F.	8/20/2019
		12/31/2999

polycase		1305 CHESTER RD. PARKWAY AVON, OHIO 44011-1083 U.S.A. PH: 1-800-248-1233 440-934-0444 FAX: 440-934-0088	
HINGED BASE W/INSERTS		SIZE C	REV 0
SCALE: 1:1		SHEET 1 OF 1	