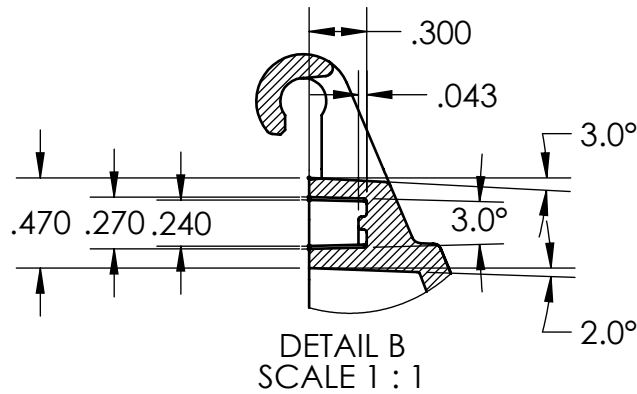
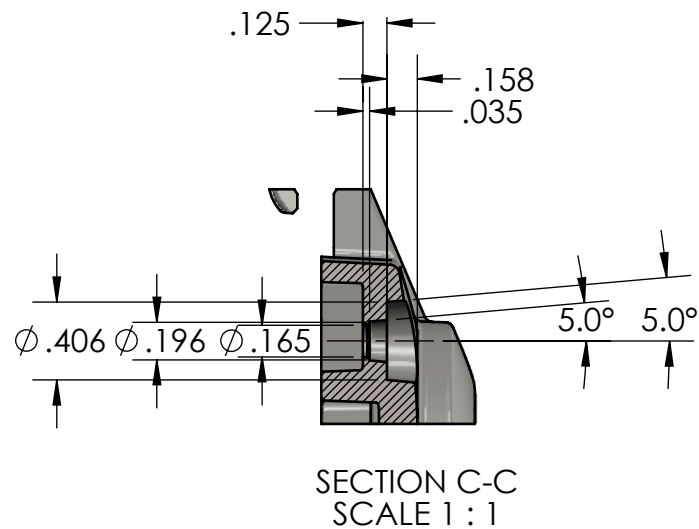
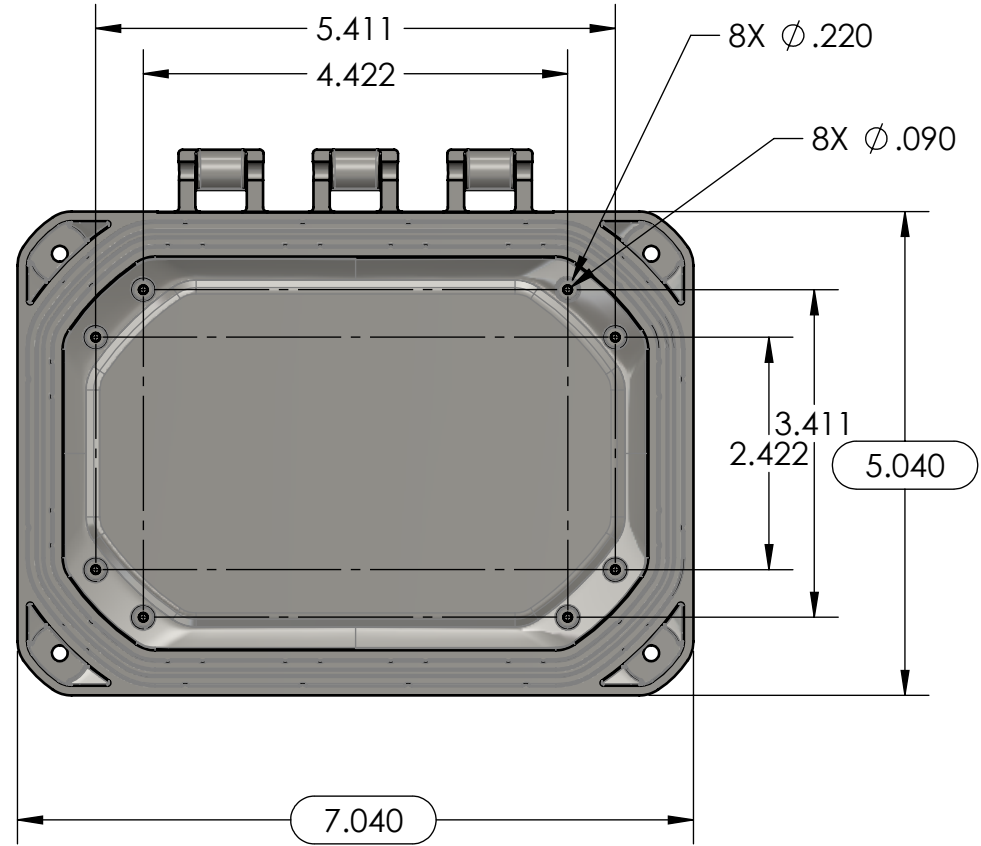
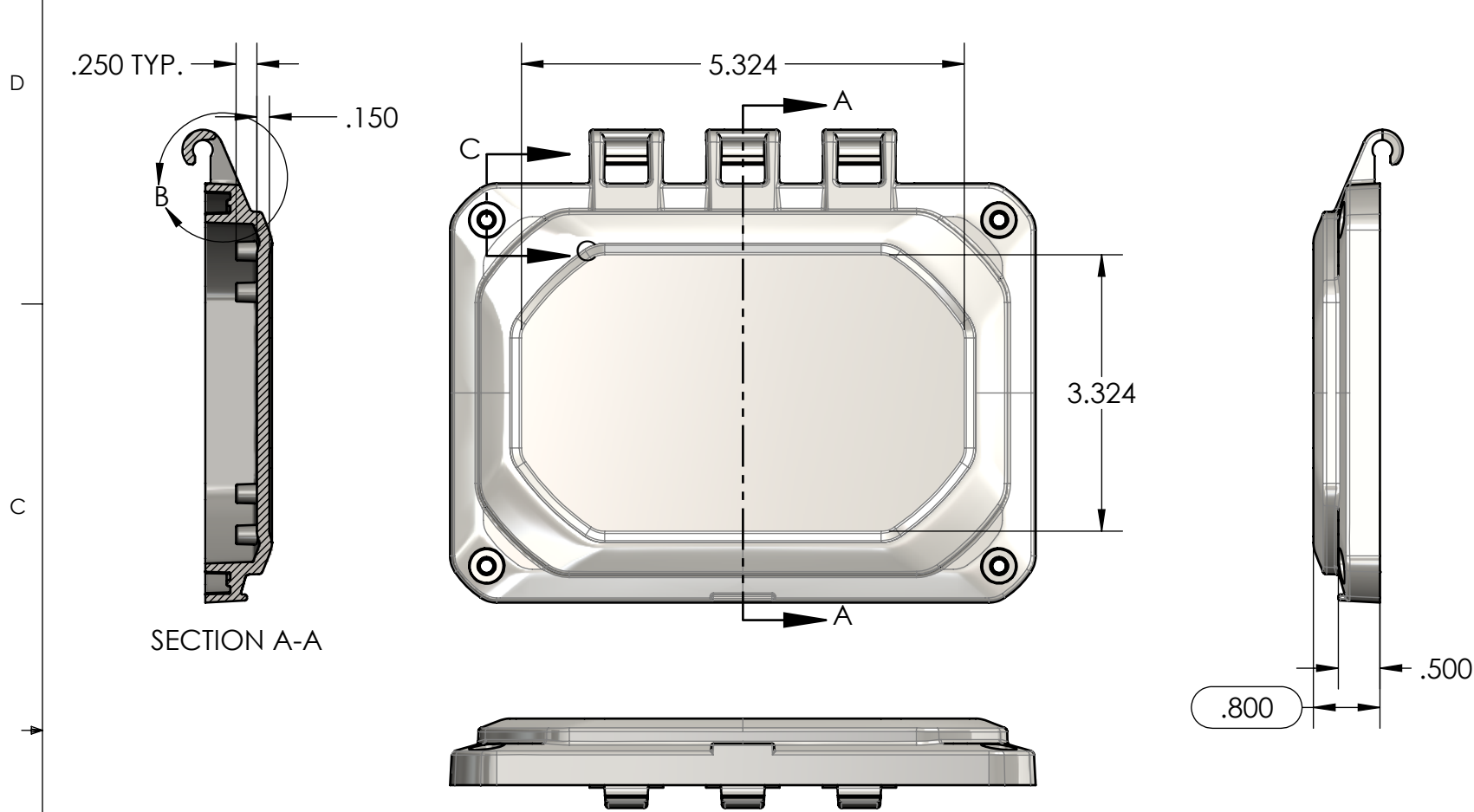
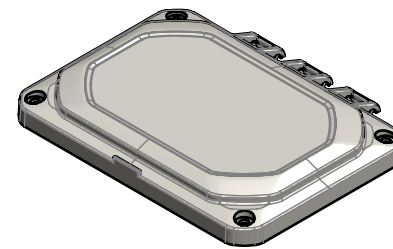


TOLERANCE CHART																
DIMENSION RANGE	0	.039	.118	.236	.394	.591	.866	1.181	1.575	2.087	2.756	3.543	4.724	6.299	7.874	9.843
TOOL DEPENDENT	±.007	±.007	±.008	±.008	±.009	±.010	±.011	±.012	±.013	±.015	±.017	±.020	±.024	±.028	±.035	.043
NON-TOOL DEPENDENT	±.003	±.004	±.004	±.004	±.005	±.006	±.007	±.008	±.009	±.011	±.013	±.016	±.020	±.024	±.031	.039



PART NUMBER: ZH-06041C-01
MATERIAL: PC
MATERIAL SPEC: /PC/XXX/GY
COLOR: LIGHT GRAY
FLAME RATING: UL94-5VA




PART NUMBER: ZH-06041C-02
MATERIAL: PC
MATERIAL SPEC: /PC/XXX/CL
COLOR: CLEAR
FLAME RATING: UL94V-0



- NOTES:
1. REFER TO SOLID MODEL FOR COMPLETE PART DEFINITION.
 2. (INSPECTION DIMENSION)
 3. EJECTOR PINS TO BE FLUSH ±.010
 4. FLASH .005 MAX
 5. GATE TO BE REMOVED FLUSH ±.015

REV.	COMMENT	ZONE	REVISED BY	CREATION DATE
1	UPDATED FLAME RATING		Douglas French	7-29-2024
0			Douglas French	9-6-2022
REVISIONS				

UNLESS OTHERWISE SPECIFIED: DIMENSIONS ARE IN: INCHES[mm] TOLERANCES: ANGULAR: ±2° TWO PLACE DECIMAL: ±.010 THREE PLACE DECIMAL: ±.005 PRINTED GRAPHICS: ±.010	PART NO. ZH-06041C-01		<div>polycase</div> <div>1305 CHESTER IND. PARKWAY AVON, OHIO 44011-1083 U.S.A. PH#: 1-800-248-1233, 440-934-0444 FAX#: 440-934-0088</div>			
	MATERIAL PC					
PROPRIETARY AND CONFIDENTIAL THE INFORMATION CONTAINED IN THIS DRAWING IS THE SOLE PROPERTY OF POLYCASE. ANY REPRODUCTION IN PART OR AS A WHOLE WITHOUT THE WRITTEN PERMISSION OF POLYCASE IS PROHIBITED.	FLAME RATING UL94-5VA		SIZE B	COVER, HINGED	REV 1	
		NAME			DATE	
	DRAWN	D.M.F.	8/19/2019			
	CHECKED	-	1/14/2019			
CAD FILE: ZH-06041C			SCALE: 1:2		SHEET 1 OF 1	