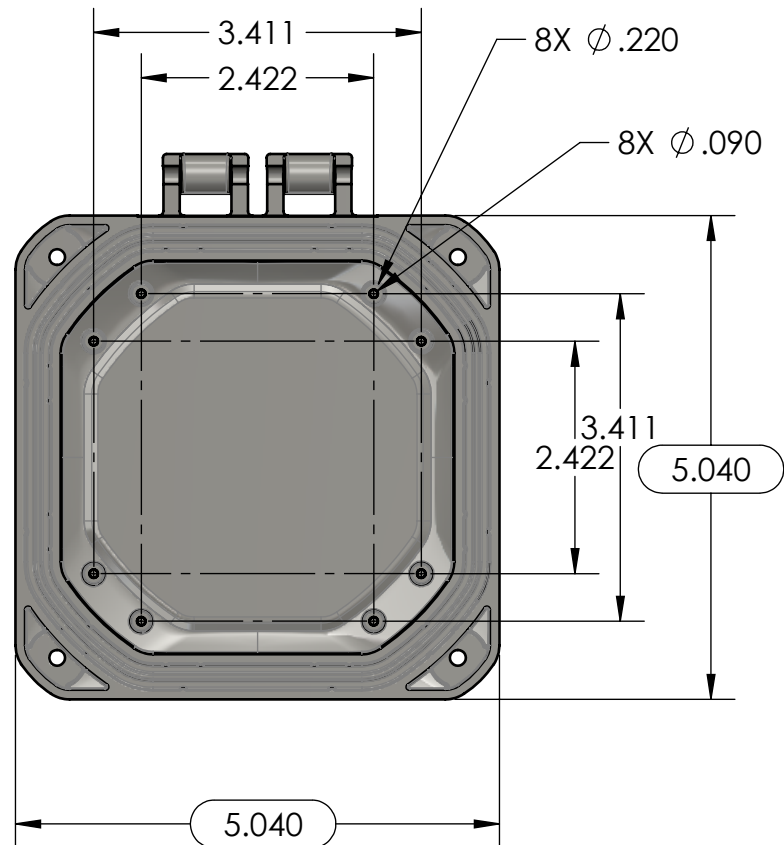
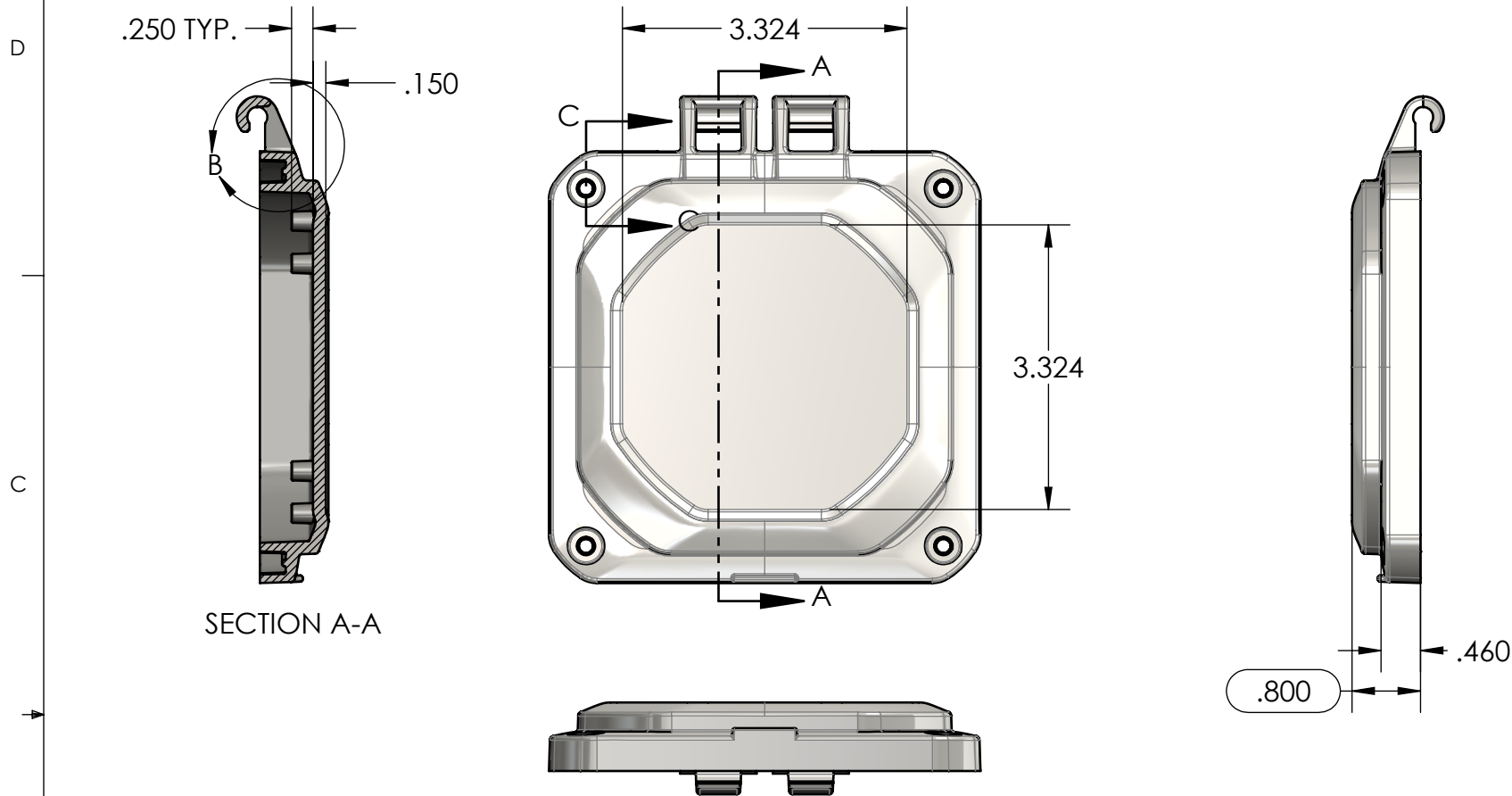
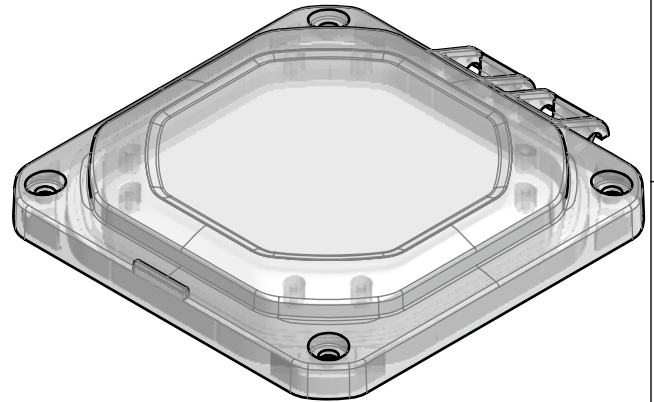
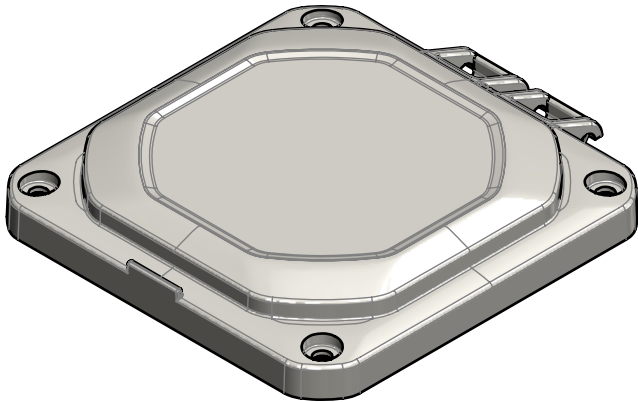


TOLERANCE CHART																
DIMENSION RANGE	0	.039	.118	.236	.394	.591	.866	1.181	1.575	2.087	2.756	3.543	4.724	6.299	7.874	9.843
TOOL DEPENDENT	±.007	±.007	±.008	±.008	±.009	±.010	±.011	±.012	±.013	±.015	±.017	±.020	±.024	±.028	±.035	.043
NON-TOOL DEPENDENT	±.003	±.004	±.004	±.004	±.005	±.006	±.007	±.008	±.009	±.011	±.013	±.016	±.020	±.024	±.031	.039



PART NUMBER: ZH-04041C-01
MATERIAL: PC
MATERIAL SPEC: /PC/XXX/GY
COLOR: LIGHT GRAY
FLAME RATING: UL94-5VA

PART NUMBER: ZH-04041C-02
MATERIAL: PC
MATERIAL SPEC: /PC/XXX/CL
COLOR: CLEAR
FLAME RATING: UL94V-0



- NOTES:
- REFER TO SOLID MODEL FOR COMPLETE PART DEFINITION.
 - INSPECTION DIMENSION
 - EJECTOR PINS TO BE FLUSH ±.010
 - FLASH .005 MAX
 - GATE TO BE REMOVED FLUSH ±.015

REV.	COMMENT	ZONE	REVISED BY	CREATION DATE
1	updated flame rating		Douglas French	7-30-2024
0			Douglas French	9-6-2022

UNLESS OTHERWISE SPECIFIED:
DIMENSIONS ARE IN: INCHES [mm]
TOLERANCES: ANGULAR: ±2°
TWO PLACE DECIMAL: ±.010
THREE PLACE DECIMAL: ±.005
PRINTED GRAPHICS: ±.010

PROPRIETARY AND CONFIDENTIAL
THE INFORMATION CONTAINED IN THIS
DRAWING IS THE SOLE PROPERTY OF
POLYCASE. ANY REPRODUCTION IN PART
OR AS A WHOLE WITHOUT THE WRITTEN
PERMISSION OF POLYCASE IS PROHIBITED.
CAD FILE: ZH-04041C

PART NO.
ZH-04041C-01
MATERIAL
PC

FLAME RATING
UL94-5VA

DRAWN
CHECKED

NAME
DATE

polycase
1305 CHESTER IND. PARKWAY AVON, OHIO 44011-1083 U.S.A.
PH# 1-800-248-1233, 440-934-0444 FAX# 440-934-0088

COVER, HINGED
REV
0

SCALE: 1:2
SHEET 1 OF 1