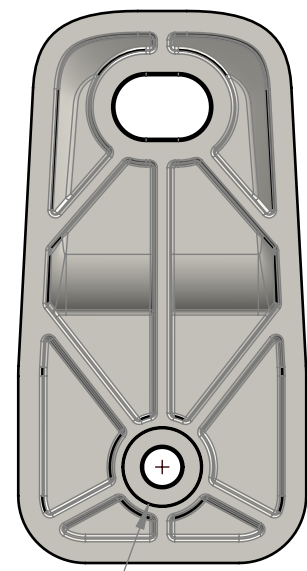
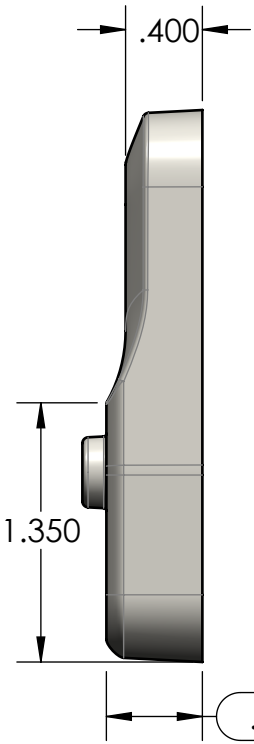
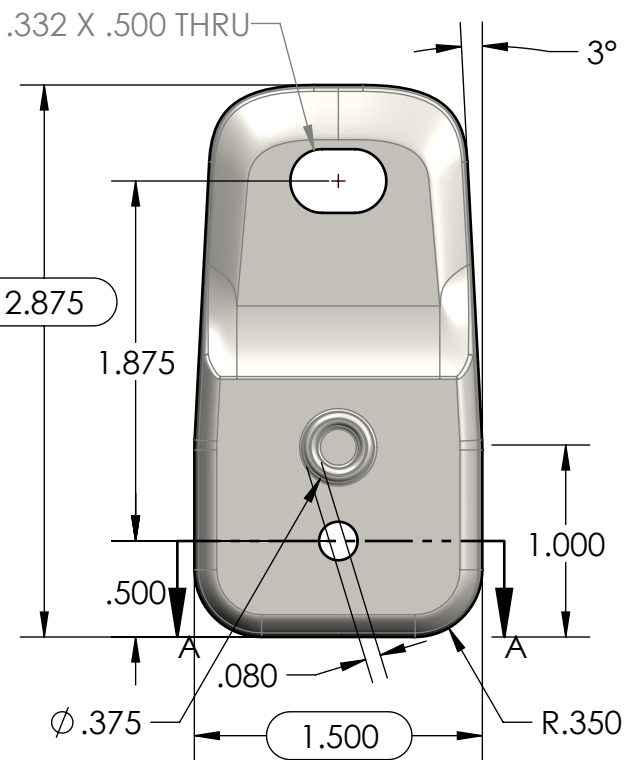


SECTION A-A

TOLERANCE CHART												
DIMENSION RANGE	0	.039	.118	.236	.394	.591	.866	1.181	1.575	2.087	2.756	3.543
	.039	.118	.236	.394	.591	.866	1.181	1.575	2.087	2.756	3.543	4.724
TOOL DEPENDENT	±.007	±.007	±.008	±.008	±.009	±.010	±.011	±.012	±.013	±.015	±.017	±.020
NON-TOOL DEPENDENT	±.003	±.004	±.004	±.004	±.005	±.006	±.007	±.008	±.009	±.011	±.013	±.016



Ø .201 THRU ALL
 □ Ø .406 ▽ .133



PART NUMBER: ZH-01F-01
 MATERIAL: PC
 MATERIAL SPEC: /PC/XXX/GY
 COLOR: LIGHT GRAY
 FLAME RATING: UL94-5VA



PART NUMBER: ZH-01F-00
 MATERIAL: PC
 MATERIAL SPEC: /PC/XXX/BK
 COLOR: BLACK
 FLAME RATING: UL94-5VA

- NOTES:
 1. REFER TO SOLID MODEL FOR COMPLETE PART DEFINITION.
 2. (INSPECTION DIMENSION)
 3. EJECTOR PINS TO BE FLUSH ±.010
 4. FLASH .005 MAX
 5. GATE TO BE REMOVED FLUSH ±.015

REV.	COMMENT	ZONE	REVISED BY	MODIFICATION DATE
2	UPDATED FLAME RATING		Douglas French	6/14/2024
1	ADD BLACK CONFIG		Douglas French	1/24/2024
0			Douglas French	3/22/2023

REVISIONS

UNLESS OTHERWISE SPECIFIED:
 DIMENSIONS ARE IN: INCHES[mm]
 TOLERANCES: ANGULAR: ±2°
 TWO PLACE DECIMAL: ±.010
 THREE PLACE DECIMAL: ±.005
 PRINTED GRAPHICS: ±.010

PROPRIETARY AND CONFIDENTIAL
 THE INFORMATION CONTAINED IN THIS
 DRAWING IS THE SOLE PROPERTY OF
 POLYCASE. ANY REPRODUCTION IN PART
 OR AS A WHOLE WITHOUT THE WRITTEN
 PERMISSION OF POLYCASE IS PROHIBITED.
 CAD FILE: ZH-01F

PART NO. AS NOTED	
MATERIAL -	
FLAME RATING -	SIZE A
DRAWN D.M.F.	DATE 10/3/2019
CHECKED B.M.B.	DATE 1/15/2019

polycase
 1305 CHESTER IND. PARKWAY AVON, OHIO 44011-1083 U.S.A.
 PH# 1-800-248-1233, 440-934-0444 FAX# 440-934-0088

FLAME RATING: - MOUNTING FOOT REV **2**

SCALE: 1:1 SHEET 1 OF 1