

UNLESS OTHERWISE SPECIFIED:
DIMENSIONS ARE IN: INCHES [mm]
TOLERANCES: ANGULAR: $\pm 2^{\circ}$
TWO PLACE DECIMAL: $\pm .010$
THREE PLACE DECIMAL: $\pm .005$
PRINTED GRAPHICS: $\pm .010$

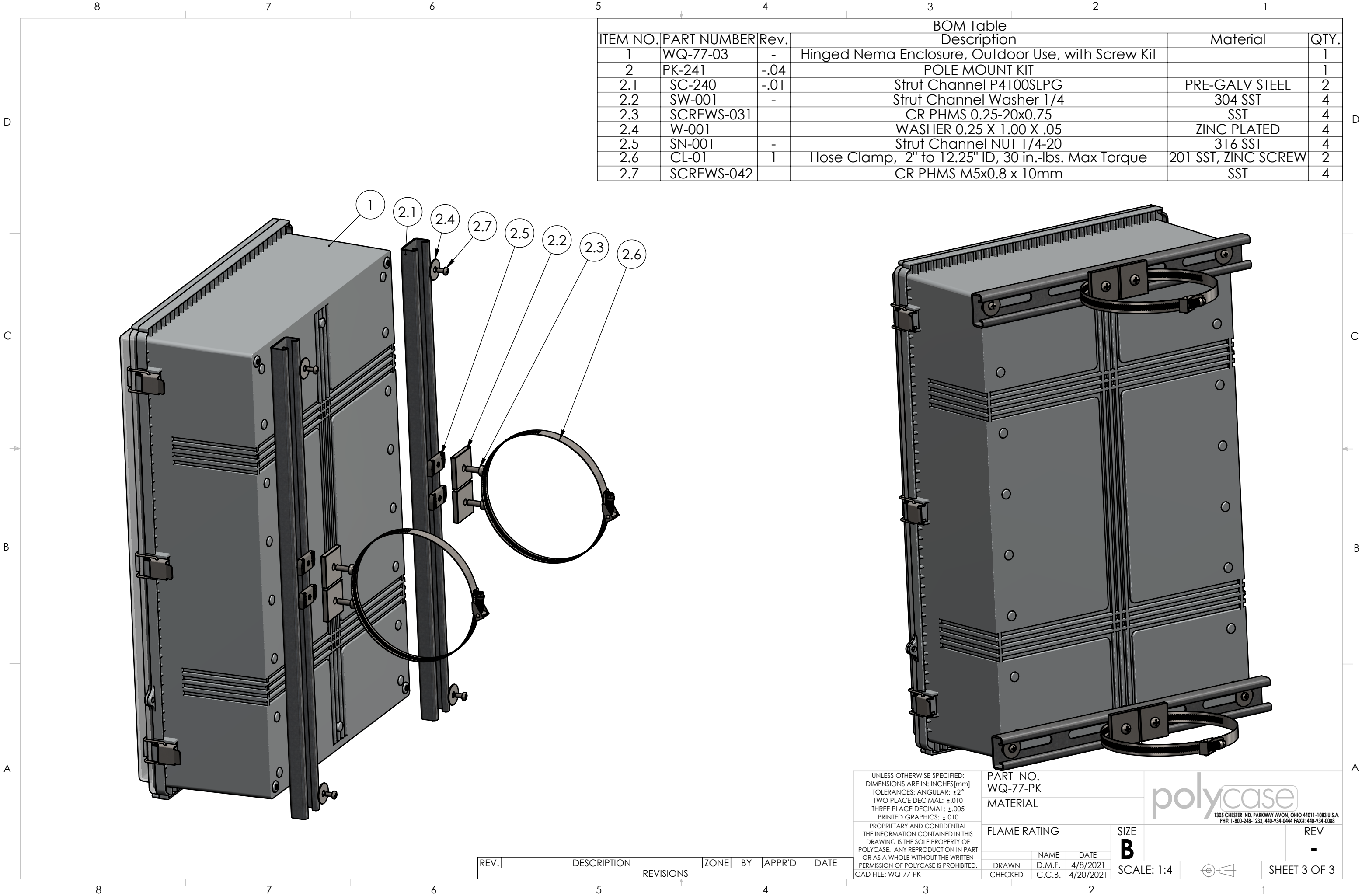
PROPRIETARY AND CONFIDENTIAL
THE INFORMATION CONTAINED IN THIS
DRAWING IS THE SOLE PROPERTY OF
POLYCASE. ANY REPRODUCTION IN PART
OR AS A WHOLE WITHOUT THE WRITTEN
PERMISSION OF POLYCASE IS PROHIBITED.
CAD FILE: WQ-77-PK

PART NO. WQ-77-PK		
MATERIAL		
FLAME RATING		SIZE B
DRAWN	NAME	DATE
CHECKED	D.M.F.	4/8/2021
	C.C.B.	4/20/2021

1305 CHESTER IND. PARKWAY AVON, OHIO 44011-1083 U.S.A.
PH#: 1-800-248-1233, 440-934-0444 FAX#: 440-934-0088

SCALE: 1:4		REV -
SHEET 2 OF 3		

REV.	DESCRIPTION	ZONE	BY	APPR'D	DATE
REVISIONS					



BOM Table					
ITEM NO.	PART NUMBER	Rev.	Description	Material	QTY.
1	WQ-77-03	-	Hinged Nema Enclosure, Outdoor Use, with Screw Kit		1
2	PK-241	-.04	POLE MOUNT KIT		1
2.1	SC-240	-.01	Strut Channel P4100SLPG	PRE-GALV STEEL	2
2.2	SW-001	-	Strut Channel Washer 1/4	304 SST	4
2.3	SCREWS-031		CR PHMS 0.25-20x0.75	SST	4
2.4	W-001		WASHER 0.25 X 1.00 X .05	ZINC PLATED	4
2.5	SN-001	-	Strut Channel NUT 1/4-20	316 SST	4
2.6	CL-01	1	Hose Clamp, 2" to 12.25" ID, 30 in.-lbs. Max Torque	201 SST, ZINC SCREW	2
2.7	SCREWS-042		CR PHMS M5x0.8 x 10mm	SST	4

UNLESS OTHERWISE SPECIFIED:
DIMENSIONS ARE IN: INCHES [mm]
TOLERANCES: ANGULAR: ±2°
TWO PLACE DECIMAL: ±.010
THREE PLACE DECIMAL: ±.005
PRINTED GRAPHICS: ±.010

PROPRIETARY AND CONFIDENTIAL
THE INFORMATION CONTAINED IN THIS
DRAWING IS THE SOLE PROPERTY OF
POLYCASE. ANY REPRODUCTION IN PART
OR AS A WHOLE WITHOUT THE WRITTEN
PERMISSION OF POLYCASE IS PROHIBITED.
CAD FILE: WQ-77-PK

PART NO.
WQ-77-PK

MATERIAL


FLAME RATING

SIZE
B

DRAWN
CHECKED

NAME
D.M.F.
C.C.B.

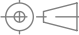
DATE
4/8/2021
4/20/2021



1305 CHESTER IND. PARKWAY AVON, OHIO 44011-1083 U.S.A.
PH#: 1-800-248-1233, 440-934-0444 FAX#: 440-934-0088

REV
-

SCALE: 1:4



SHEET 3 OF 3