

BOM Table					
ITEM NO.	PART NUMBER	Rev.	Description	Material	QTY.
1	WQ-70-02	-	Hinged Nema Enclosure, Outdoor Use, with Screw Kit		1
2	PK-161	-.04	POLE MOUNT KIT		1
2.1	SC-160	-.01	Strut Channel P4100SLPG	PRE-GALV STEEL	2
2.2	SW-001	-	Strut Channel Washer 1/4	304 SST	4
2.3	SCREWS-031		CR PHMS 0.25-20x0.75	SST	4
2.4	W-001		WASHER 0.25 X 1.00 X .05	ZINC PLATED	4
2.5	SN-001	-	Strut Channel NUT 1/4-20	316 SST	4
2.6	CL-01	1	Hose Clamp, 2" to 12.25" ID, 30 in.-lbs. Max Torque	201 SST, ZINC SCREW	2
2.7	SCREWS-042		CR PHMS M5x0.8 x 10mm	SST	4

UNLESS OTHERWISE SPECIFIED:
DIMENSIONS ARE IN: INCHES [mm]
TOLERANCES: ANGULAR: ±2°
TWO PLACE DECIMAL: ±.010
THREE PLACE DECIMAL: ±.005
PRINTED GRAPHICS: ±.010

PROPRIETARY AND CONFIDENTIAL
THE INFORMATION CONTAINED IN THIS
DRAWING IS THE SOLE PROPERTY OF
POLYCASE. ANY REPRODUCTION IN PART
OR AS A WHOLE WITHOUT THE WRITTEN
PERMISSION OF POLYCASE IS PROHIBITED.
CAD FILE: WQ-70-PK

PART NO.
WQ-70-PK

MATERIAL

FLAME RATING

DRAWN
CHECKED

NAME
C.C.B.

DATE
4/20/2021

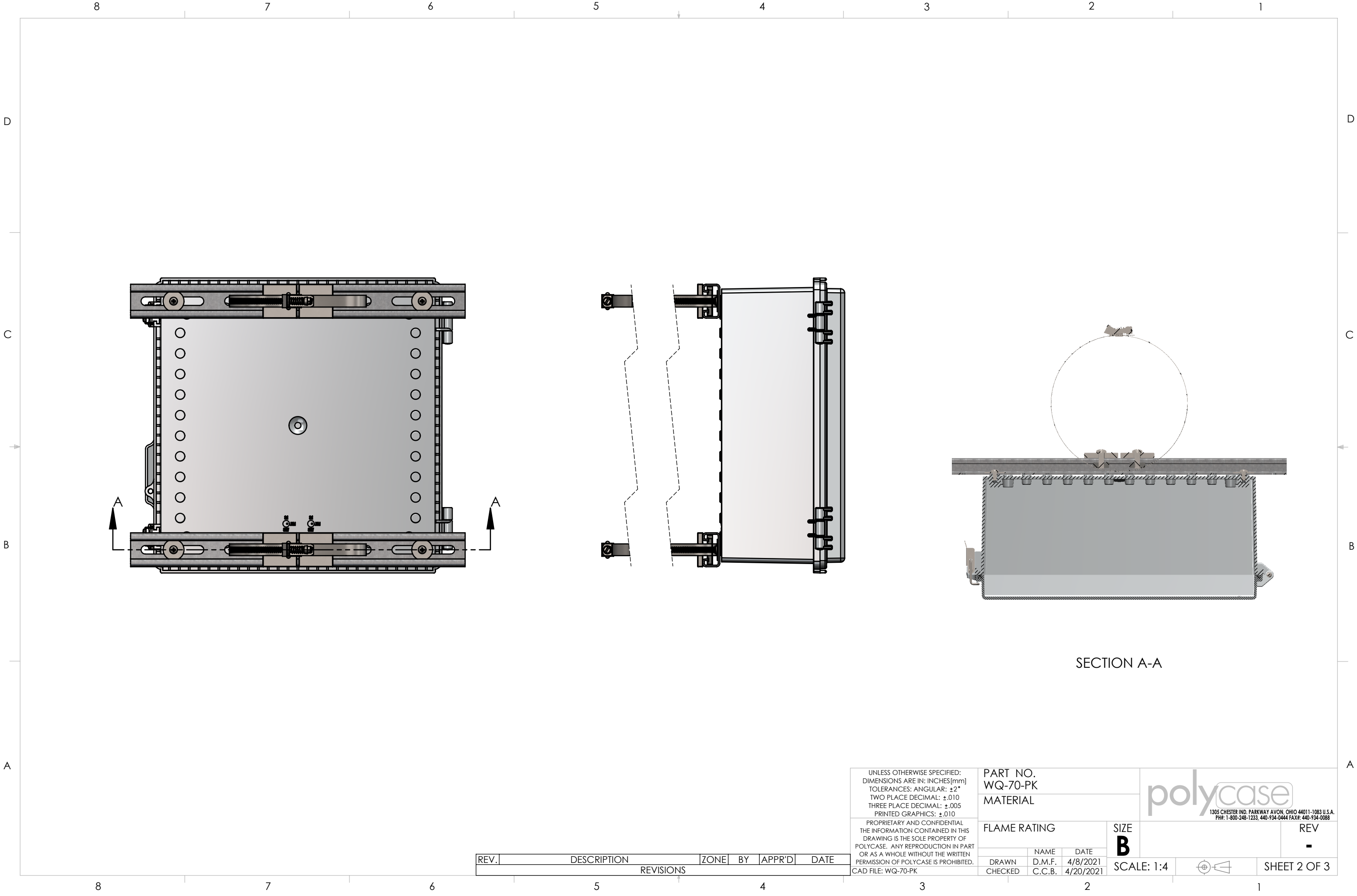
SIZE
B

SCALE: 1:4


SHEET 1 OF 3

1305 CHESTER IND. PARKWAY AVON, OHIO 44011-1083 U.S.A.
PH#: 1-800-248-1233, 440-934-0444 FAX#: 440-934-0088

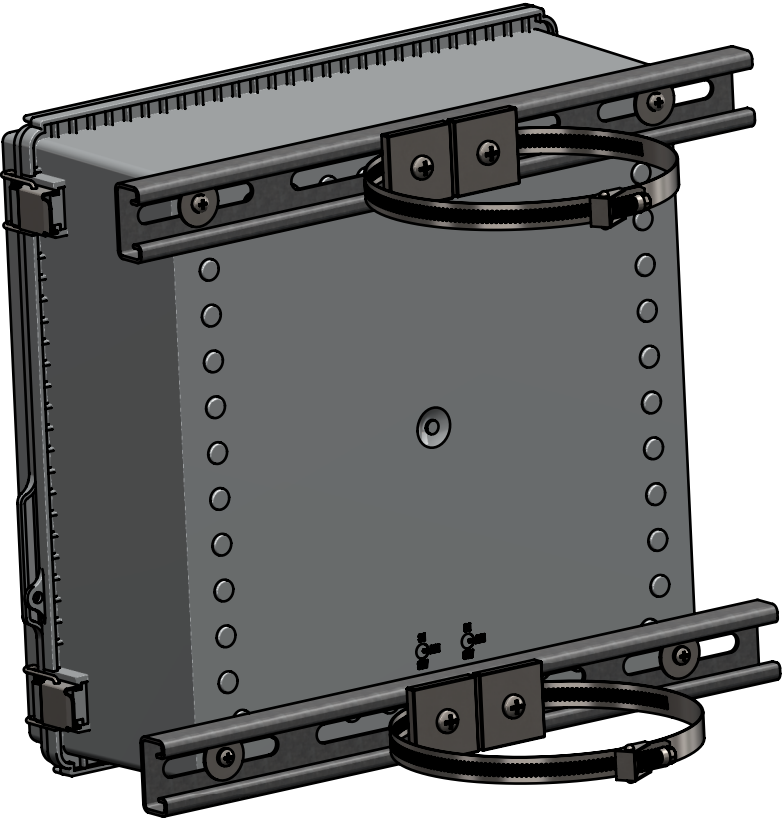
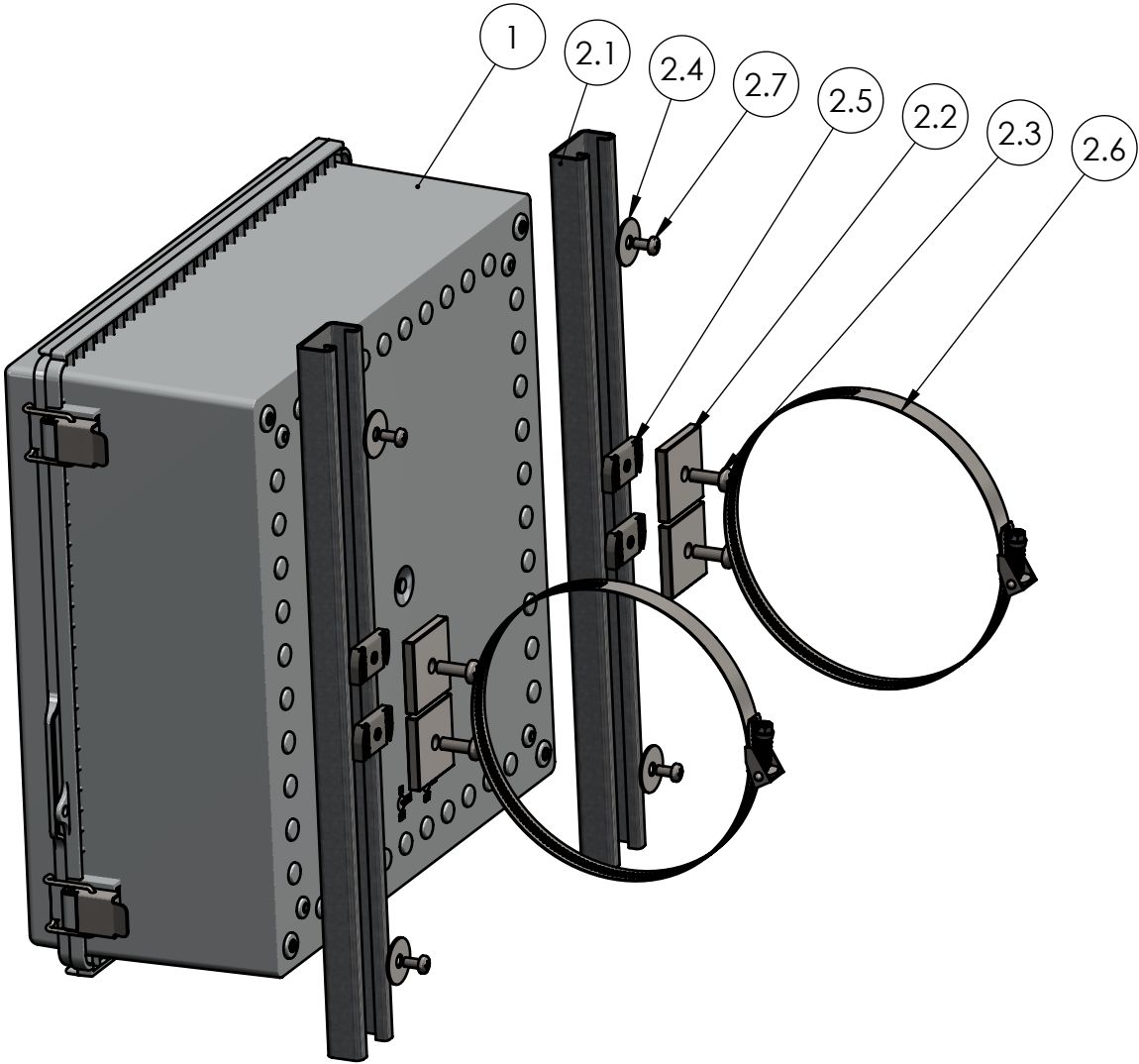
REV
-




SECTION A-A

UNLESS OTHERWISE SPECIFIED: DIMENSIONS ARE IN: INCHES [mm] TOLERANCES: ANGULAR: $\pm 2^{\circ}$ TWO PLACE DECIMAL: $\pm .010$ THREE PLACE DECIMAL: $\pm .005$ PRINTED GRAPHICS: $\pm .010$		PART NO. WQ-70-PK		 <small>1305 CHESTER IND. PARKWAY AVON, OHIO 44011-1083 U.S.A. PH#: 1-800-248-1233, 440-934-0444 FAX#: 440-934-0088</small>	
		MATERIAL			
PROPRIETARY AND CONFIDENTIAL THE INFORMATION CONTAINED IN THIS DRAWING IS THE SOLE PROPERTY OF POLYCASE. ANY REPRODUCTION IN PART OR AS A WHOLE WITHOUT THE WRITTEN PERMISSION OF POLYCASE IS PROHIBITED. CAD FILE: WQ-70-PK		FLAME RATING		SIZE B	REV -
		DRAWN CHECKED	NAME D.M.F. C.C.B.	DATE 4/8/2021 4/20/2021	

BOM Table					
ITEM NO.	PART NUMBER	Rev.	Description	Material	QTY.
1	WQ-70-02	-	Hinged Nema Enclosure, Outdoor Use, with Screw Kit		1
2	PK-161	-.04	POLE MOUNT KIT		1
2.1	SC-160	-.01	Strut Channel P4100SLPG	PRE-GALV STEEL	2
2.2	SW-001	-	Strut Channel Washer 1/4	304 SST	4
2.3	SCREWS-031		CR PHMS 0.25-20x0.75	SST	4
2.4	W-001		WASHER 0.25 X 1.00 X .05	ZINC PLATED	4
2.5	SN-001	-	Strut Channel NUT 1/4-20	316 SST	4
2.6	CL-01	1	Hose Clamp, 2" to 12.25" ID, 30 in.-lbs. Max Torque	201 SST, ZINC SCREW	2
2.7	SCREWS-042		CR PHMS M5x0.8 x 10mm	SST	4



UNLESS OTHERWISE SPECIFIED: DIMENSIONS ARE IN: INCHES[mm] TOLERANCES: ANGULAR: ±2° TWO PLACE DECIMAL: ±.010 THREE PLACE DECIMAL: ±.005 PRINTED GRAPHICS: ±.010	PART NO. WQ-70-PK		<div>polycase</div> <div>1305 CHESTER IND. PARKWAY AVON, OHIO 44011-1083 U.S.A. PH#: 1-800-248-1233, 440-934-0444 FAX#: 440-934-0088</div>	
	MATERIAL			
PROPRIETARY AND CONFIDENTIAL THE INFORMATION CONTAINED IN THIS DRAWING IS THE SOLE PROPERTY OF POLYCASE. ANY REPRODUCTION IN PART OR AS A WHOLE WITHOUT THE WRITTEN PERMISSION OF POLYCASE IS PROHIBITED. CAD FILE: WQ-70-PK	FLAME RATING		SIZE B	REV -
		NAME	DATE	
	DRAWN	D.M.F.	4/8/2021	
	CHECKED	C.C.B.	4/20/2021	
			SCALE: 1:4	SHEET 3 OF 3

REV.	DESCRIPTION	ZONE	BY	APPR'D	DATE
REVISIONS					