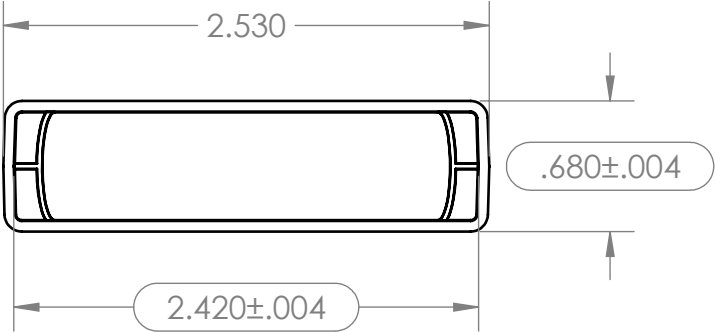


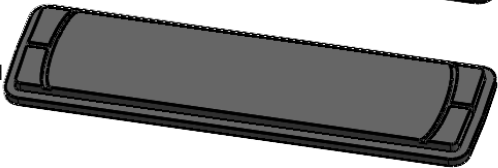
TOLERANCE CHART																					
DIMENSION RANGE	0	.039	.118	.236	.394	.591	.866	1.181	1.575	2.087	2.756	3.543	4.724	6.299	7.874	9.843	12.402	15.748	19.685	24.803	31.496
	.039	.118	.236	.394	.591	.866	1.181	1.575	2.087	2.756	3.543	4.724	6.299	7.874	9.843	12.402	15.748	19.685	24.803	31.496	39.37
TOOL DEPENDENT	±.007	±.007	±.008	±.008	±.009	±.010	±.011	±.012	±.013	±.015	±.017	±.020	±.024	±.028	±.035	.043	.051	.063	.079	.098	.118
NON-TOOL DEPENDENT	±.003	±.004	±.004	±.004	±.005	±.006	±.007	±.008	±.009	±.011	±.013	±.016	±.020	±.024	±.031	.039	.047	.059	.075	.094	.114



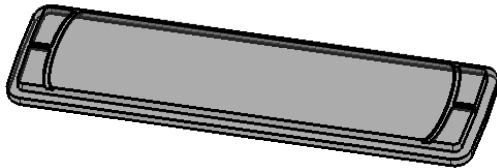
PART NUMBER: VM-24EPT-NOR
MATERIAL: PPE+PS
MATERIAL SPEC: /PPO/SE100X/BK
COLOR: BLACK
FLAME RATING: UL94V-1



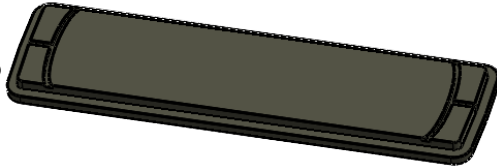
PART NUMBER: VM-24EPT*14
MATERIAL: ABS
MATERIAL SPEC: /ABS/PA765/WH
COLOR: WHITE
FLAME RATING: UL94-5VA



PART NUMBER: VM-24EPT*08
MATERIAL: PC
MATERIAL SPEC: /PC/XXX/CL
COLOR: CLEAR
FLAME RATING: UL94V-0



PART NUMBER: VM-24EPT*03
MATERIAL: ABS
MATERIAL SPEC: /ABS/PA765/BO
COLOR: BONE
FLAME RATING: UL94-5VA



PART NUMBER: VM-24EPT
MATERIAL: ABS
MATERIAL SPEC: /ABS/PA765/BK
COLOR: BLACK
FLAME RATING: UL94-5VA



UNLESS OTHERWISE SPECIFIED:
DIMENSIONS ARE IN: INCHES[mm]
TOLERANCES: ANGULAR: ±2°
TWO PLACE DECIMAL: ±
THREE PLACE DECIMAL: ±
PRINTED GRAPHICS: ±.010

PROPRIETARY AND CONFIDENTIAL
THE INFORMATION CONTAINED IN THIS
DRAWING IS THE SOLE PROPERTY OF
POLYCASE. ANY REPRODUCTION IN PART
OR AS A WHOLE WITHOUT THE WRITTEN
PERMISSION OF POLYCASE IS PROHIBITED.
CAD FILE: VM-24EPT

PART NO.
AS NOTED
MATERIAL

FLAME RATING

	NAME	DATE
DRAWN	D.M.F.	3/27/2024
CHECKED	-	12/31/2999



1305 CHESTER IND. PARKWAY AVON, OHIO 44011-1083 U.S.A.
PH# 1-800-248-1233, 440-934-0444 FAX# 440-934-0088

SIZE
A

END PANEL: TEXTURED
SURFACE

REV
0

SCALE: 1:1



SHEET 1 OF 1

0	ADDED CONFIGS		Douglas French	3-27-2024
REV.	COMMENT	ZONE	REVISED BY	MODIFICATION DATE
REVISIONS				

5

4

3

2

1