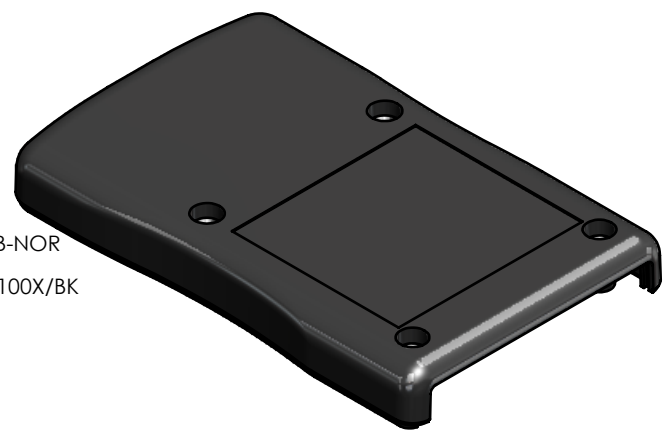
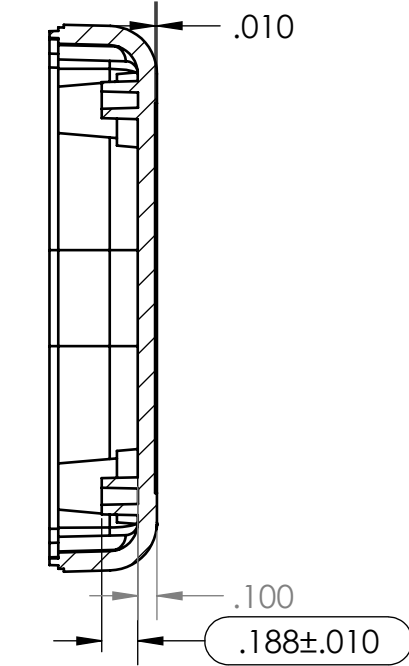
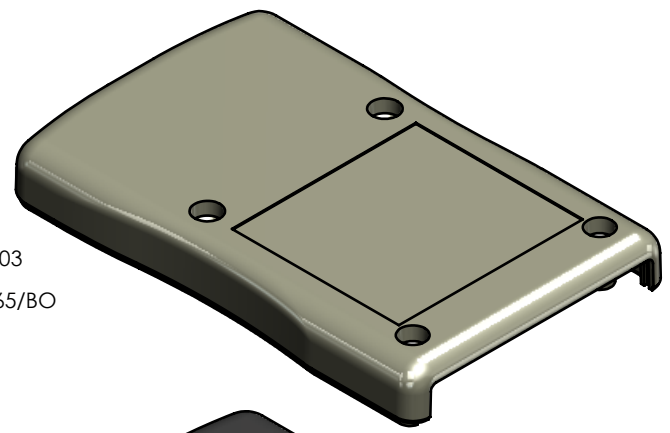


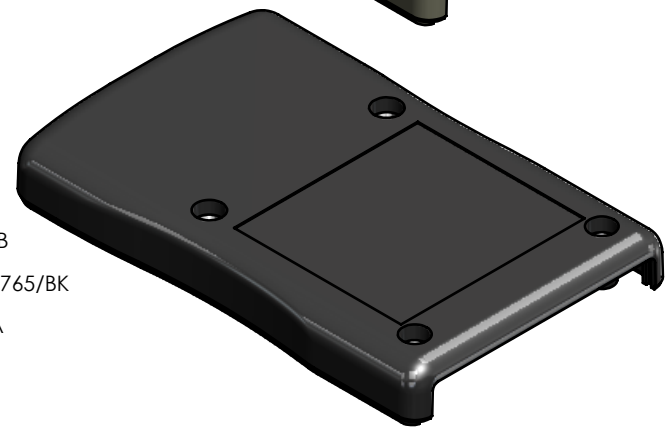
| 4 | | | | | | | | | | 3 | | | | | 2 | | | | | 1 | | | | | |
|--------------------|-------|-------|-------|-------|-------|-------|-------|-------|-------|-------|-------|-------|-------|-------|-------|--------|--------|--------|--------|--------|--------|--|--|--|--|
| TOLERANCE CHART | | | | | | | | | | | | | | | | | | | | | | | | | |
| DIMENSION RANGE | 0 | .039 | .118 | .236 | .394 | .591 | .866 | 1.181 | 1.575 | 2.087 | 2.756 | 3.543 | 4.724 | 6.299 | 7.874 | 9.843 | 12.402 | 15.748 | 19.685 | 24.803 | 31.496 | | | | |
| | .039 | .118 | .236 | .394 | .591 | .866 | 1.181 | 1.575 | 2.087 | 2.756 | 3.543 | 4.724 | 6.299 | 7.874 | 9.843 | 12.402 | 15.748 | 19.685 | 24.803 | 31.496 | 39.37 | | | | |
| TOOL DEPENDENT | ±.007 | ±.007 | ±.008 | ±.008 | ±.009 | ±.010 | ±.011 | ±.012 | ±.013 | ±.015 | ±.017 | ±.020 | ±.024 | ±.028 | ±.035 | .043 | .051 | .063 | .079 | .098 | .118 | | | | |
| NON-TOOL DEPENDENT | ±.003 | ±.004 | ±.004 | ±.004 | ±.005 | ±.006 | ±.007 | ±.008 | ±.009 | ±.011 | ±.013 | ±.016 | ±.020 | ±.024 | ±.031 | .039 | .047 | .059 | .075 | .094 | .114 | | | | |



PART NUMBER: VM-24BMB-NOR
MATERIAL: PPE+PS
MATERIAL SPEC: /PPO/SE100X/BK
COLOR: BLACK
FLAME RATING: UL94V-1



PART NUMBER: VM-24BMB*03
MATERIAL: ABS
MATERIAL SPEC: /ABS/PA765/BO
COLOR: BONE
FLAME RATING: UL94-5VA



PART NUMBER: VM-24BMB
MATERIAL: ABS
MATERIAL SPEC: /ABS/PA765/BK
COLOR: BLACK
FLAME RATING: UL94-5VA

- NOTES:
- REFER TO SOLID MODEL FOR COMPLETE PART DEFINITION.
 - (INSPECTION DIMENSION)
 - GATE FLUSH ±.015
 - FLASH .005 MAX

| 0 | CONFIG UPDATE | | Douglas French | 3-27-2024 |
|-----------|---------------|------|----------------|-------------------|
| REV. | COMMENT | ZONE | REVISED BY | MODIFICATION DATE |
| REVISIONS | | | | |

UNLESS OTHERWISE SPECIFIED:
DIMENSIONS ARE IN: INCHES [mm]
TOLERANCES: ANGULAR: ±2°
TWO PLACE DECIMAL: ±
THREE PLACE DECIMAL: ±
PRINTED GRAPHICS: ±.010

PART NO.
AS NOTED
MATERIAL
-
FLAME RATING
-

PROPRIETARY AND CONFIDENTIAL
THE INFORMATION CONTAINED IN THIS
DRAWING IS THE SOLE PROPERTY OF
POLYCASE. ANY REPRODUCTION IN PART
OR AS A WHOLE WITHOUT THE WRITTEN
PERMISSION OF POLYCASE IS PROHIBITED.
CAD FILE: VM-24BMB

polycase
1305 CHESTER IND. PARKWAY AVON, OHIO 44011-1083 U.S.A.
PH#: 1-800-248-1233, 440-934-0444 FAX#: 440-934-0088

SIZE
B
SCALE: 1:1

BASE: TWO AA BATTERIES
REV
0
SHEET 1 OF 1

| | | |
|---------|--------|------------|
| DRAWN | NAME | DATE |
| CHECKED | D.M.F. | 3/27/2024 |
| | - | 12/31/2999 |

A

A