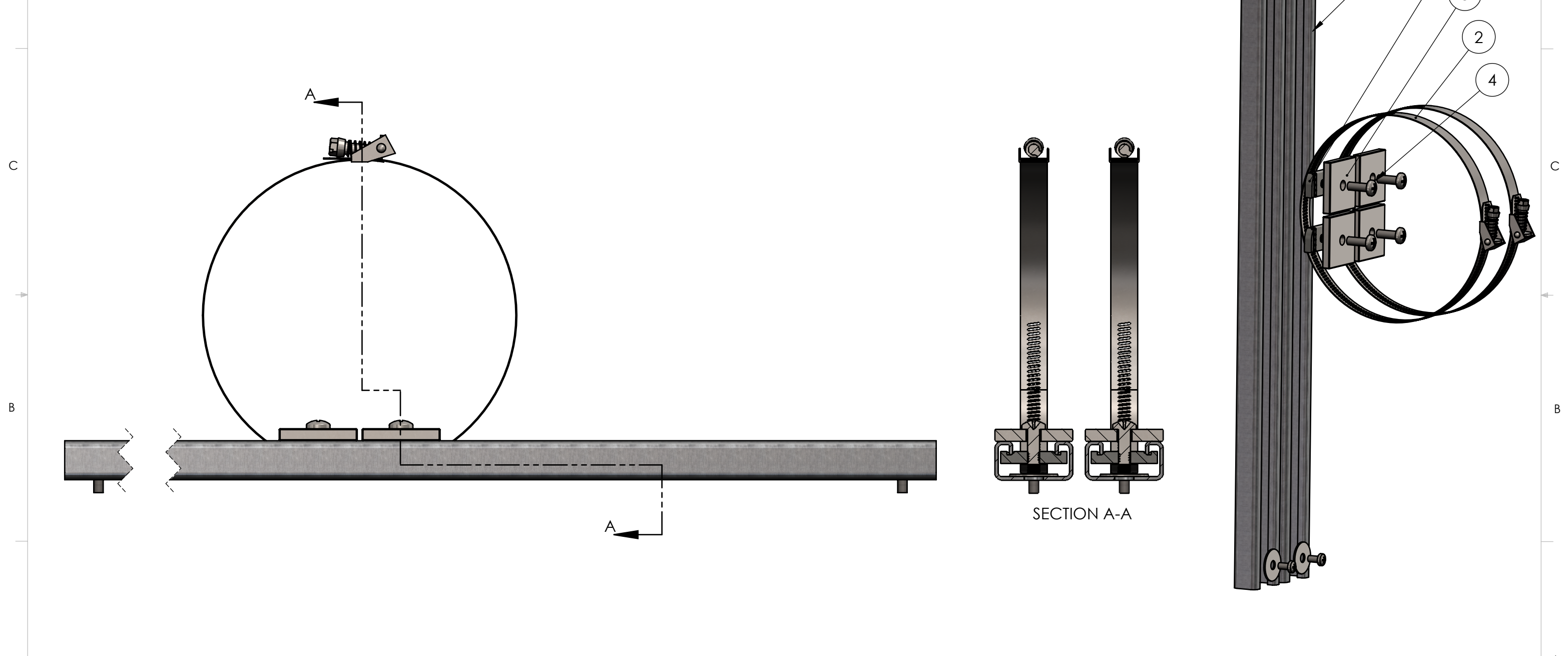


BOM Table							
ITEM NO.	PART NUMBER	Rev.	Description	Material	Vendor	VendorNo	QTY.
1	SN-001	-	Strut Channel NUT 1/4-20	316 SST	Unistrut Service Company	CNN20025ST	4
2	CL-01	1	Hose Clamp, 2" to 12.25" ID, 30 in.-lbs. Max Torque	201 SST, ZINC SCREW	MCMMASTER-CARR	5322K24	2
3	SW-001	-	Strut Channel Washer 1/4	304 SST	Unistrut Service Company	F100025SS	4
4	SCREWS-031		CR PHMS 0.25-20x0.75	SST			4
5	SC-240	-.01	Strut Channel P4100SLPG	PRE-GALV STEEL			2
6	W-001		WASHER 0.25 X 1.00 X .05	ZINC PLATED			4
7	SCREWS-042		CR PHMS M5x0.8 x 10mm	SST			4



UNLESS OTHERWISE SPECIFIED: DIMENSIONS ARE IN: INCHES[mm] TOLERANCES: ANGULAR: ±2° TWO PLACE DECIMAL: ±.010 THREE PLACE DECIMAL: ±.005 PRINTED GRAPHICS: ±.010	PART NO. PK-241		 <small>1305 CHESTER IND. PARKWAY AVON, OHIO 44011-1083 U.S.A. PH#: 1-800-248-1233, 440-934-0444 FAX#: 440-934-0088</small>					
	MATERIAL							
PROPRIETARY AND CONFIDENTIAL THE INFORMATION CONTAINED IN THIS DRAWING IS THE SOLE PROPERTY OF POLYCASE. ANY REPRODUCTION IN PART OR AS A WHOLE WITHOUT THE WRITTEN PERMISSION OF POLYCASE IS PROHIBITED. CAD FILE: PK-241	FLAME RATING	SIZE <b>B</b>	POLE MOUNT KIT					
	<table border="1"> <tr> <th>NAME</th> <th>DATE</th> </tr> <tr> <td>D.M.F.</td> <td>4/7/2020</td> </tr> <tr> <td>C.C.B.</td> <td>4/9/2020</td> </tr> </table>	NAME	DATE	D.M.F.	4/7/2020	C.C.B.	4/9/2020	SCALE: 1:2
NAME	DATE							
D.M.F.	4/7/2020							
C.C.B.	4/9/2020							

REV.	DESCRIPTION	ZONE	BY	APPR'D	DATE
	REVISIONS				