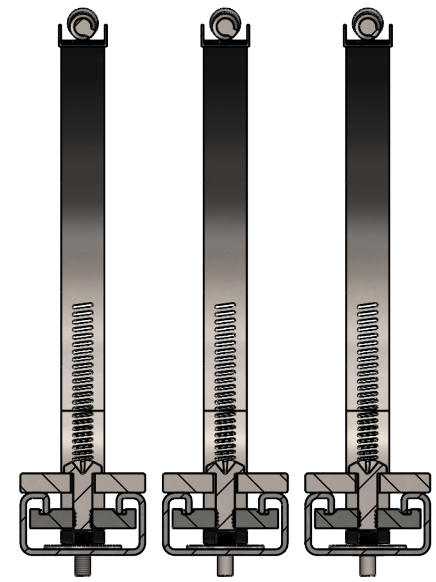
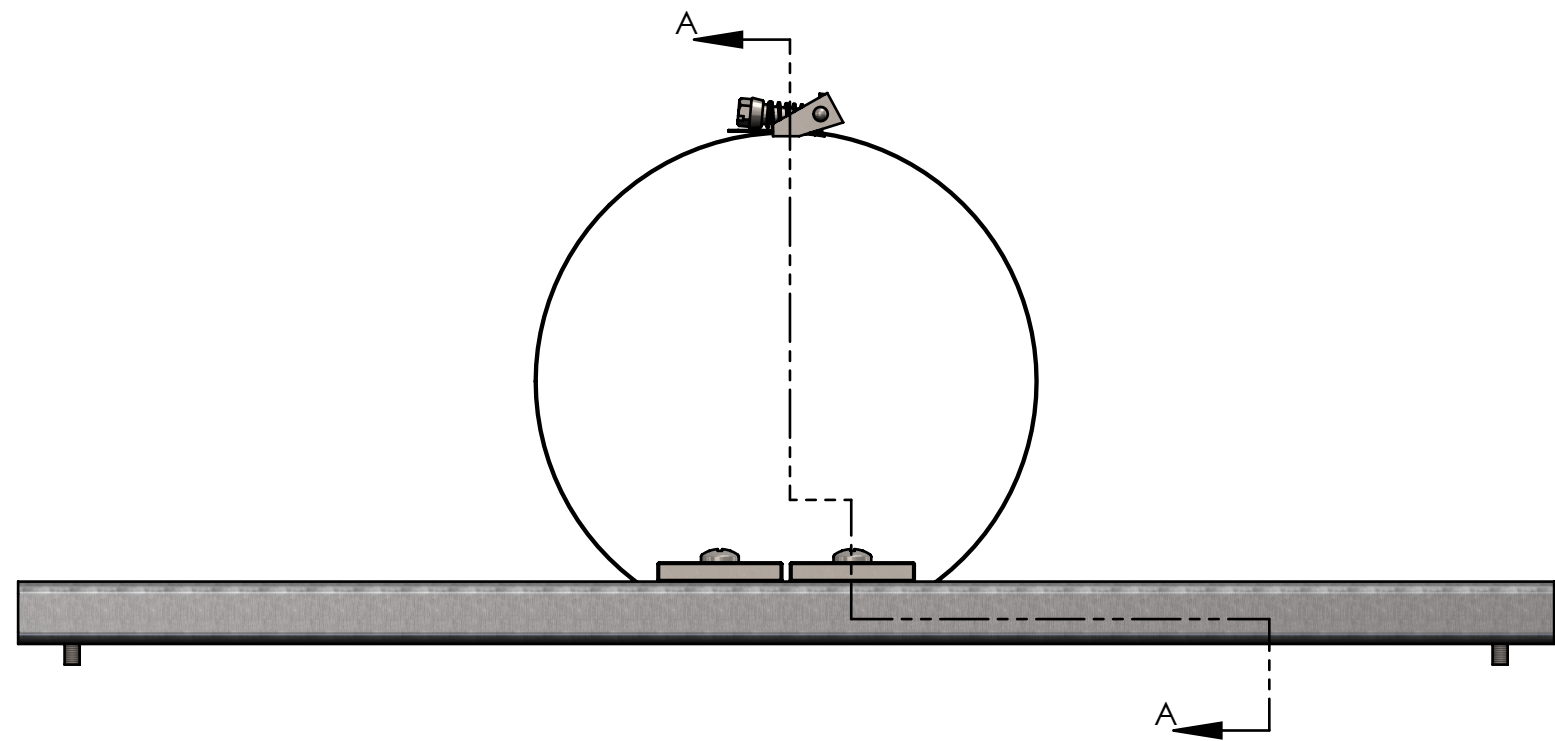
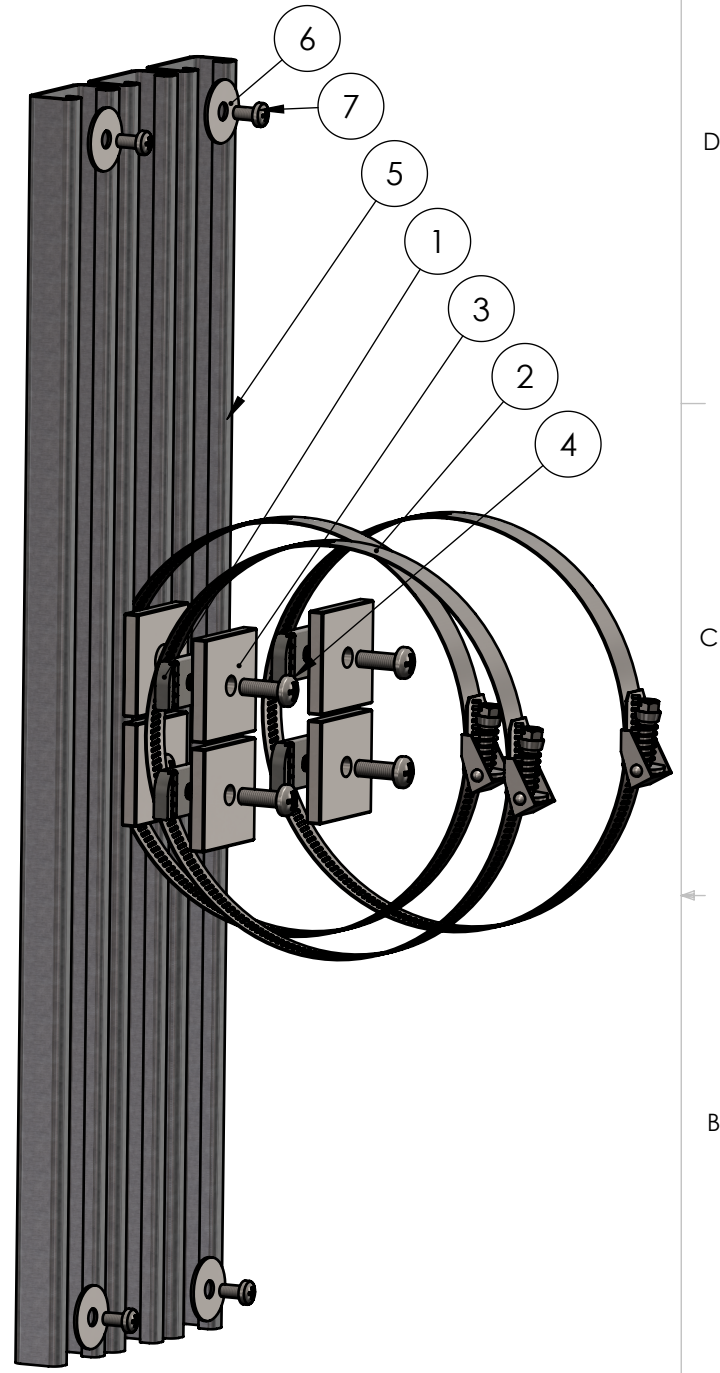


BOM Table							
ITEM NO.	PART NUMBER	Rev.	Description	Material	Vendor	VendorNo	QTY.
1	SN-001	-	Strut Channel NUT 1/4-20	316 SST	Unistrut Service Company	CNN20025ST	6
2	CL-01	1	Hose Clamp, 2" to 12.25" ID, 30 in.-lbs. Max Torque	201 SST, ZINC SCREW	MCMMASTER-CARR	5322K24	3
3	SW-001	-	Strut Channel Washer 1/4	304 SST	Unistrut Service Company	F100025SS	6
4	SCREWS-031		CR PHMS 0.25-20x0.75	SST			6
5	SC-200	-.01	Strut Channel P4100SLPG	PRE-GALV STEEL			3
6	W-001		WASHER 0.25 X 1.00 X .05	ZINC PLATED			6
7	SCREWS-042		CR PHMS M5x0.8 x 10mm	SST			6



SECTION A-A



UNLESS OTHERWISE SPECIFIED:  
 DIMENSIONS ARE IN: INCHES [mm]  
 TOLERANCES: ANGULAR: ±2°  
 TWO PLACE DECIMAL: ±.010  
 THREE PLACE DECIMAL: ±.005  
 PRINTED GRAPHICS: ±.010

PROPRIETARY AND CONFIDENTIAL  
 THE INFORMATION CONTAINED IN THIS  
 DRAWING IS THE SOLE PROPERTY OF  
 POLYCASE. ANY REPRODUCTION IN PART  
 OR AS A WHOLE WITHOUT THE WRITTEN  
 PERMISSION OF POLYCASE IS PROHIBITED.  
 CAD FILE: PK-203

PART NO. PK-203		MATERIAL	
FLAME RATING		SIZE <b>B</b>	POLE MOUNT KIT
DRAWN	NAME D.M.F.	DATE 4/27/2020	REV -
CHECKED	C.C.B.	4/27/2020	SCALE: 1:2.5

**polycase**  
 1305 CHESTER IND. PARKWAY AVON, OHIO 44011-1083 U.S.A.  
 PH#: 1-800-248-1233, 440-934-0444 FAX#: 440-934-0088

SHEET 1 OF 1

REV.	DESCRIPTION	ZONE	BY	APPR'D	DATE
REVISIONS					