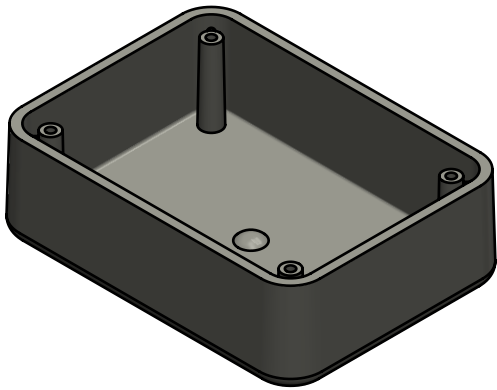
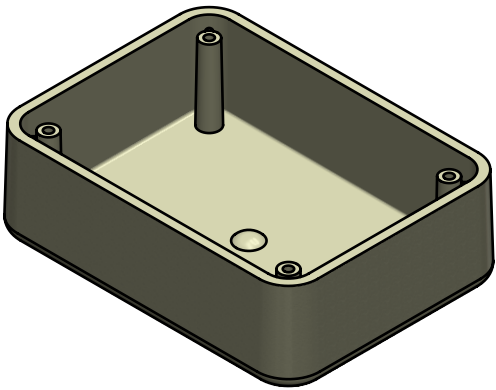


PART NUMBER: LP-21BPXX
MATERIAL: ABS
MATERIAL SPEC.: /ABS/PA765/BK
COLOR: BLACK

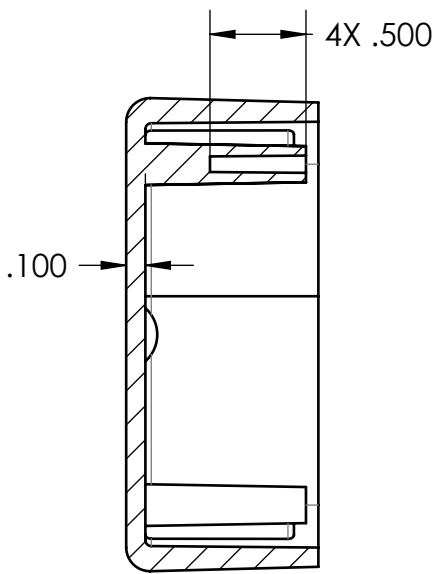


PART NUMBER: LP-21BPXX*01
MATERIAL: ABS
MATERIAL SPEC.: /ABS/PA765/GY
COLOR: GRAY

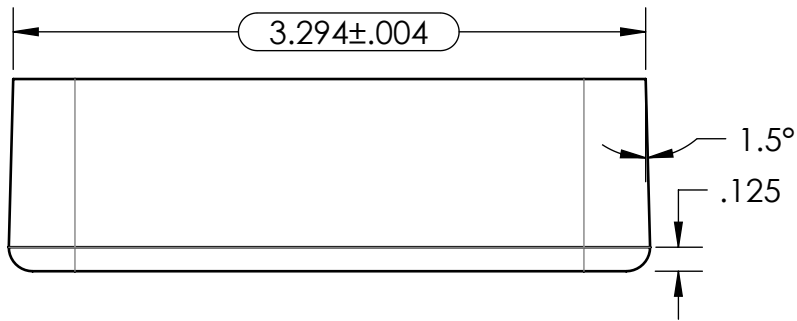
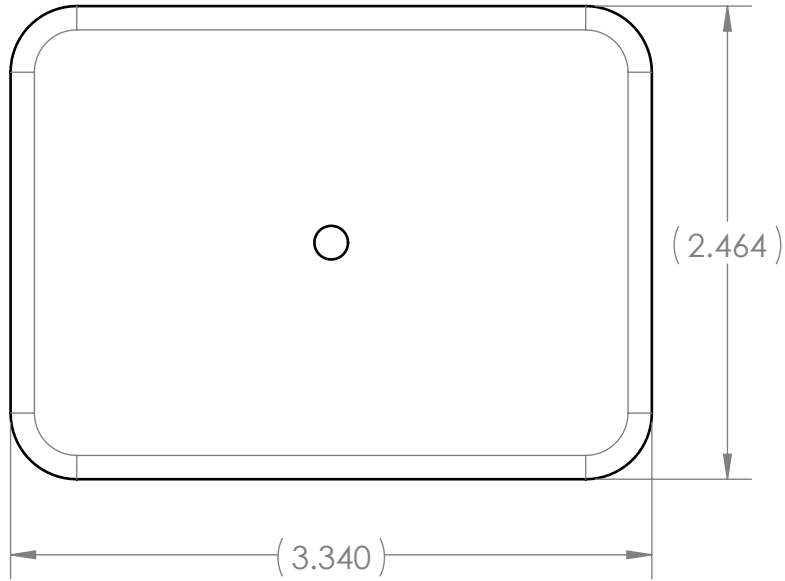
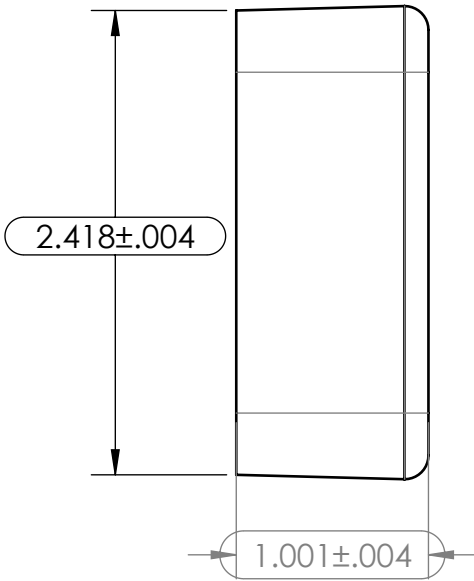
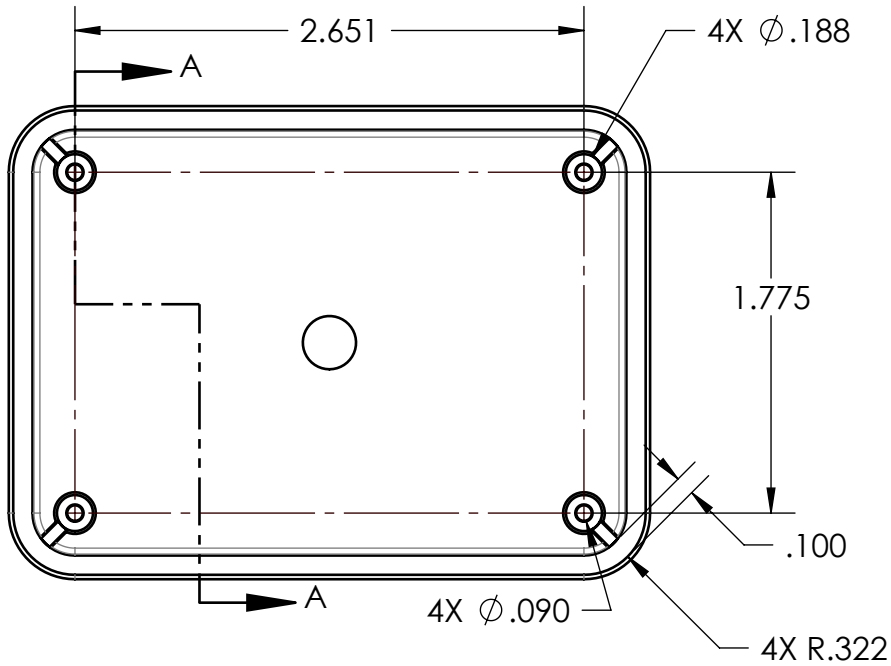


PART NUMBER: LP-21BPXX*03
MATERIAL: ABS
MATERIAL SPEC.: /ABS/PA765/BO
COLOR: BONE

TOLERANCE CHART													
DIMENSION RANGE	0	.039	.118	.236	.394	.591	.866	1.181	1.575	2.087	2.756	3.543	4.724
	.039	.118	.236	.394	.591	.866	1.181	1.575	2.087	2.756	3.543	4.724	6.299
TOOL DEPENDENT	±.007	±.007	±.008	±.008	±.009	±.010	±.011	±.012	±.013	±.015	±.017	±.020	±.024
NON-TOOL DEPENDENT	±.003	±.004	±.004	±.004	±.005	±.006	±.007	±.008	±.009	±.011	±.013	±.016	±.020



SECTION A-A



- NOTES:
- REFER TO SOLID MODEL FOR COMPLETE PART DEFINITION.
 - (INSPECTION DIMENSION)
 - EJECTOR PINS FLUSH ±.010
 - GATE FLUSH +.000
-.015
 - FLASH .005 MAX

1	UPDATED FOR TOOLING		D.M.F.	B.M.B.	5/6/2021
REV.	DESCRIPTION	ZONE	BY	APPR'D	DATE
REVISIONS					

UNLESS OTHERWISE SPECIFIED:
DIMENSIONS ARE IN: INCHES [mm]
TOLERANCES: ANGULAR: ±2°
TWO PLACE DECIMAL: ±
THREE PLACE DECIMAL: ±
PRINTED GRAPHICS: ±

PROPRIETARY AND CONFIDENTIAL
THE INFORMATION CONTAINED IN THIS
DRAWING IS THE SOLE PROPERTY OF
POLYCASE. ANY REPRODUCTION IN PART
OR AS A WHOLE WITHOUT THE WRITTEN
PERMISSION OF POLYCASE IS PROHIBITED.
CAD FILE: LP-21BPXX

PART NO.
LP-21BPXX

MATERIAL
-

FLAME RATING
-

DRAWN	CHECKED	NAME	DATE
		D.M.F.	5/6/2021
		-	1/30/2017

SIZE
B

SCALE: 1:1

polycase
1305 CHESTER IND. PARKWAY AVON, OHIO 44011-1083 U.S.A.
PH#: 1-800-248-1233, 440-934-0444 FAX#: 440-934-0088

BASE, W/O FLANGES, W/O
PCB BOSSES

REV
0

SHEET 1 OF 1