

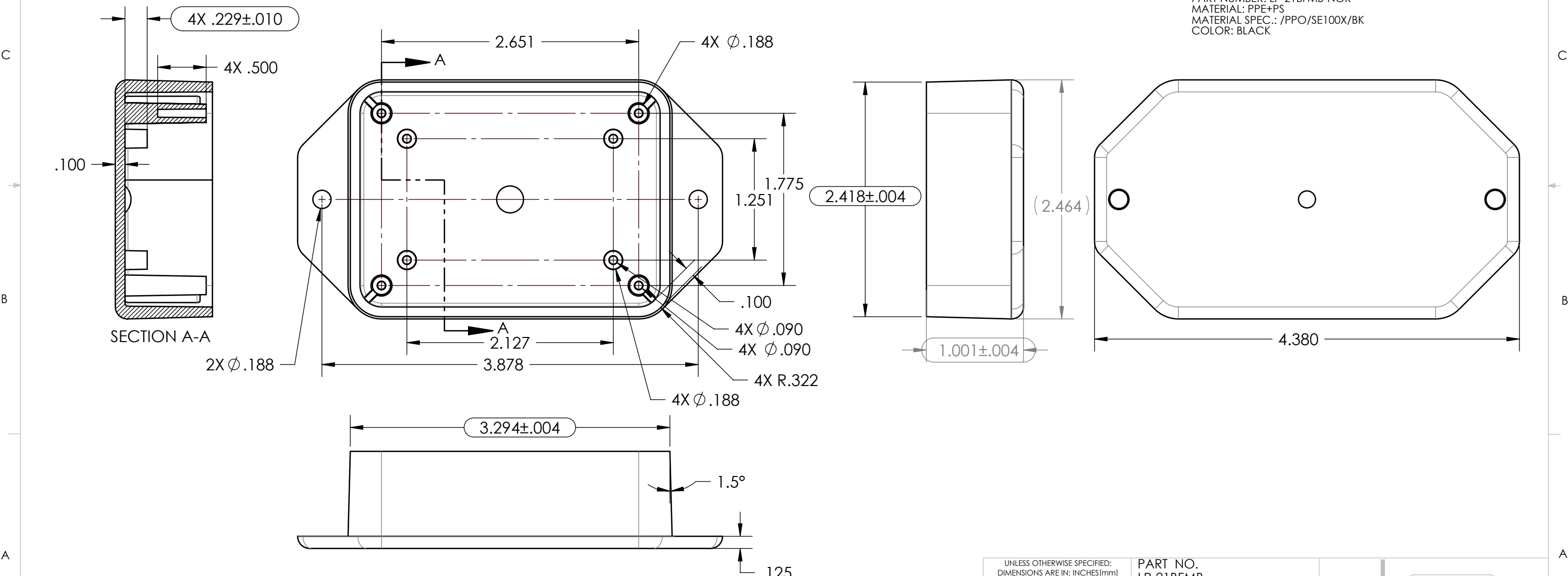
PART NUMBER: LP-21BFMB  
MATERIAL: ABS  
MATERIAL SPEC.: /ABS/PA765/BK  
COLOR: BLACK

PART NUMBER: LP-21BFMB\*01  
MATERIAL: ABS  
MATERIAL SPEC.: /ABS/PA765/GY  
COLOR: GRAY

PART NUMBER: LP-21BFMB\*03  
MATERIAL: ABS  
MATERIAL SPEC.: /ABS/PA765/BO  
COLOR: BONE

PART NUMBER: LP-21BFMB-NOR  
MATERIAL: PPE+PS  
MATERIAL SPEC.: /PPO/SE100X/BK  
COLOR: BLACK

TOLERANCE CHART													
DIMENSION RANGE	0	.039	.118	.236	.394	.591	.866	1.181	1.575	2.087	2.756	3.543	4.724
	.039	.118	.236	.394	.591	.866	1.181	1.575	2.087	2.756	3.543	4.724	6.299
TOOL DEPENDENT	±.007	±.007	±.008	±.008	±.009	±.010	±.011	±.012	±.013	±.015	±.017	±.020	±.024
NON-TOOL DEPENDENT	±.003	±.004	±.004	±.004	±.005	±.006	±.007	±.008	±.009	±.011	±.013	±.016	±.020



- NOTES:
- REFER TO SOLID MODEL FOR COMPLETE PART DEFINITION.
  - (INSPECTION DIMENSION)
  - EJECTOR PINS FLUSH ±.010
  - GATE FLUSH +.000  
-.015
  - FLASH .005 MAX

1	UPDATED FOR TOOLING		D.M.F.	B.M.B.	5/6/2021
REV.	DESCRIPTION	ZONE	BY	APPR'D	DATE
REVISIONS					

UNLESS OTHERWISE SPECIFIED:  
DIMENSIONS ARE IN: INCHES [mm]  
TOLERANCES: ANGULAR: ±2°  
TWO PLACE DECIMAL: ±  
THREE PLACE DECIMAL: ±  
PRINTED GRAPHICS: ±

PROPRIETARY AND CONFIDENTIAL  
THE INFORMATION CONTAINED IN THIS  
DRAWING IS THE SOLE PROPERTY OF  
POLYCASE. ANY REPRODUCTION IN PART  
OR AS A WHOLE WITHOUT THE WRITTEN  
PERMISSION OF POLYCASE IS PROHIBITED.  
CAD FILE: LP-21BFMB

PART NO.  
LP-21BFMB

MATERIAL  
-

FLAME RATING  
-

DRAWN  
CHECKED

NAME  
D.M.F.  
-

DATE  
5/6/2021  
1/30/2017

**polycase**  
1305 CHESTER IND. PARKWAY AVON, OHIO 44011-1083 U.S.A.  
PH#: 1-800-248-1233, 440-934-0444 FAX#: 440-934-0088

BASE, W/FLANGES, W/PCB  
BOSSSES

REV  
**0**

SCALE: 1:1

SHEET 1 OF 1