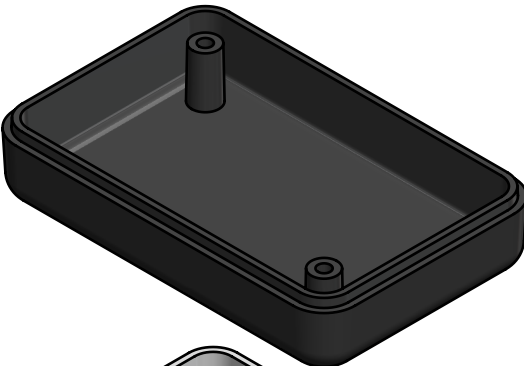
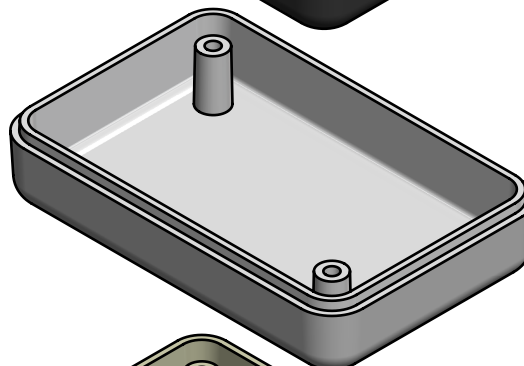


TOLERANCE CHART													
DIMENSION RANGE	0	.039	.118	.236	.394	.591	.866	1.181	1.575	2.087	2.756	3.543	4.724
	.039	.118	.236	.394	.591	.866	1.181	1.575	2.087	2.756	3.543	4.724	6.299
TOOL DEPENDENT	±.007	±.007	±.008	±.008	±.009	±.010	±.011	±.012	±.013	±.015	±.017	±.020	±.024
NON-TOOL DEPENDENT	±.003	±.004	±.004	±.004	±.005	±.006	±.007	±.008	±.009	±.011	±.013	±.016	±.020

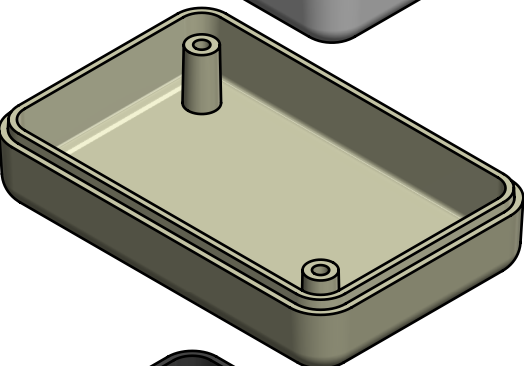
PART NUMBER: KT-35TC0  
MATERIAL SPEC: /ABS/PA765/BK  
MATERIAL: ABS  
COLOR: BLACK  
FLAME RATING: UL94V-0



PART NUMBER: KT-35TC0\*01  
MATERIAL SPEC: /ABS/PA765/GY  
MATERIAL: ABS  
COLOR: GRAY  
FLAME RATING: UL94V-0



PART NUMBER: KT-35TC0\*03  
MATERIAL SPEC: /ABS/PA765/BO  
MATERIAL: ABS  
COLOR: BONE  
FLAME RATING: UL94V-0



PART NUMBER: KT-35TC0-NOR  
MATERIAL SPEC: /PPO/SE100X/BK  
MATERIAL: PPE+PS  
COLOR: BLACK  
FLAME RATING: UL94V-1



- NOTES:  
1. REFER TO SOLID MODEL FOR COMPLETE PART DEFINITION.  
2. (INSPECTION DIMENSION)  
3. EJECTOR PINS TO BE FLUSH ±.010  
4. FLASH .005 MAX  
5. GATE TO BE REMOVED FLUSH ±.015

REV.	DESCRIPTION	ZONE	BY	APPR'D	DATE
REVISIONS					

UNLESS OTHERWISE SPECIFIED:  
DIMENSIONS ARE IN: INCHES [mm]  
TOLERANCES: ANGULAR: ±2°  
TWO PLACE DECIMAL: ±  
THREE PLACE DECIMAL: ±  
PRINTED GRAPHICS: ±

PROPRIETARY AND CONFIDENTIAL  
THE INFORMATION CONTAINED IN THIS  
DRAWING IS THE SOLE PROPERTY OF  
POLYCASE. ANY REPRODUCTION IN PART  
OR AS A WHOLE WITHOUT THE WRITTEN  
PERMISSION OF POLYCASE IS PROHIBITED.  
CAD FILE: KT-35TC0

PART NO.  
AS NOTED

MATERIAL  
-

FLAME RATING  
-

DRAWN  
D.M.F.

CHECKED  
B.M.B.

NAME  
D.M.F.

DATE  
10/4/2023

DATE  
10/4/2023

polycase

1305 CHESTER IND. PARKWAY AVON, OHIO 44011-1083 U.S.A.  
PH#: 1-800-248-1233, 440-934-0444 FAX#: 440-934-0088

COVER: TEXTURED FLUSH

REV  
0

SIZE  
B

SCALE: 1:1

SHEET 1 OF 1