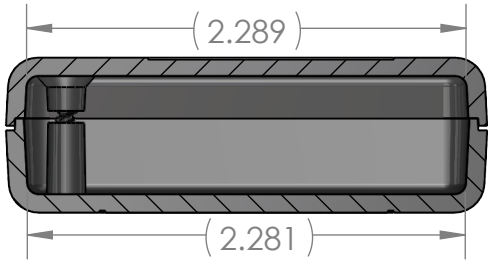
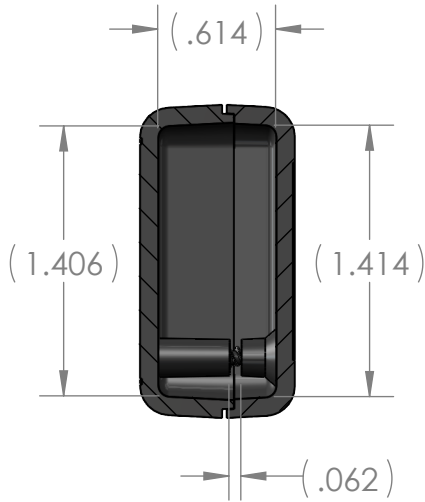
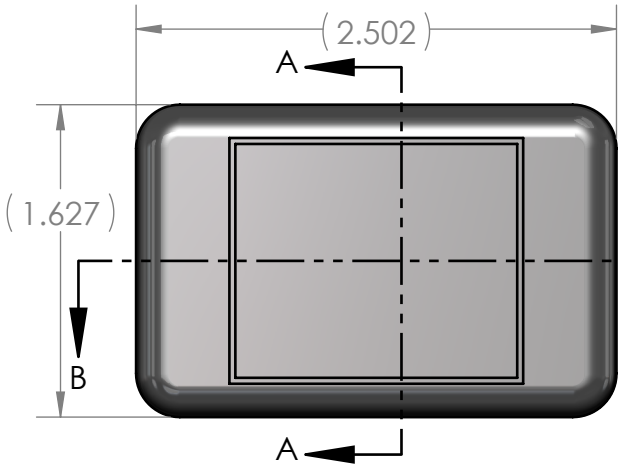


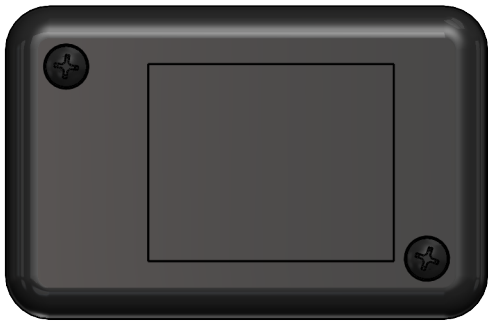
D
C
B
A



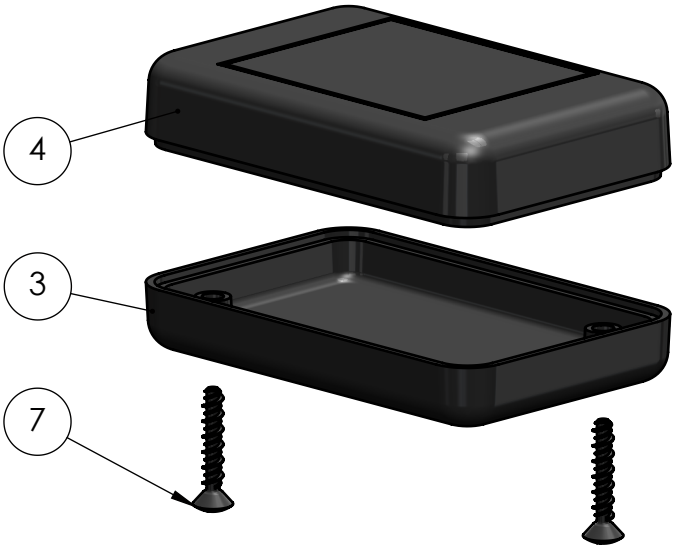
SECTION B-B



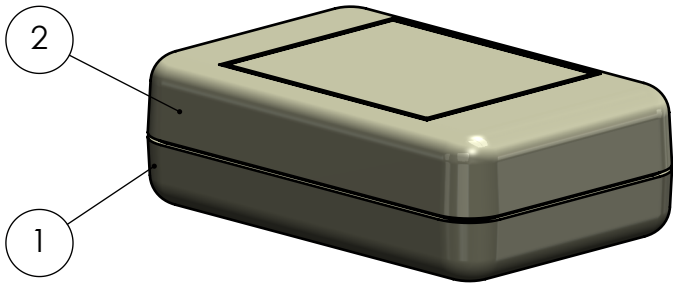
SECTION A-A



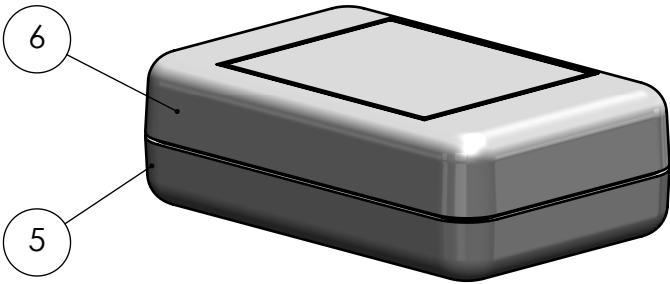
| BOM Table | | | | | | | | | |
|-----------|-----------------|------|---|----------|-------------|-------|--------------|-----------------|-----------------|
| ITEM NO. | PART NUMBER | Rev. | Description | Material | FlameRating | Color | KT-35T0/QTY. | KT-35T0*01/QTY. | KT-35T0*03/QTY. |
| 1 | KT-35B*03 | 1 | BASE | ABS | UL94V-0 | BONE | - | - | 1 |
| 2 | KT-35TC0*03 | 1 | COVER: TEXTURED FLUSH | ABS | UL94V-0 | BONE | - | - | 1 |
| 3 | KT-35B | 1 | BASE | ABS | UL94V-0 | BLACK | 1 | - | - |
| 4 | KT-35TC0 | 1 | COVER: TEXTURED FLUSH | ABS | UL94V-0 | BLACK | 1 | - | - |
| 5 | KT-35B*01 | 1 | BASE | ABS | UL94V-0 | GRAY | - | 1 | - |
| 6 | KT-35TC0*01 | 1 | COVER: TEXTURED FLUSH | ABS | UL94V-0 | GRAY | - | 1 | - |
| 7 | SCREWS-HL5/8-BR | 0 | 4-24 X .625 CROSS OVAL C'SUNK HEAD THREAD FORMING SCREW | STEEL | | | 2 | 2 | 2 |



PART NUMBER: KT-35T0



PART NUMBER: KT-35T0*03



PART NUMBER: KT-35T0*01

| REV. | DESCRIPTION | ZONE | BY | APPR'D | DATE |
|-----------|-------------|------|----|--------|------|
| REVISIONS | | | | | |

UNLESS OTHERWISE SPECIFIED:
DIMENSIONS ARE IN: INCHES [mm]
TOLERANCES: ANGULAR: ±2°
TWO PLACE DECIMAL: ±.010
THREE PLACE DECIMAL: ±.005
PRINTED GRAPHICS: ±.010
PROPRIETARY AND CONFIDENTIAL
THE INFORMATION CONTAINED IN THIS
DRAWING IS THE SOLE PROPERTY OF
POLYCASE. ANY REPRODUCTION IN PART
OR AS A WHOLE WITHOUT THE WRITTEN
PERMISSION OF POLYCASE IS PROHIBITED.
CAD FILE: KT-35T0

| | | |
|---------------------|--------|------------------|
| PART NO. KT-35T0 | | |
| MATERIAL | | |
| FLAME RATING | | SIZE B |
| DRAWN | NAME | DATE |
| CHECKED | B.M.B. | 10/4/2023 |

1305 CHESTER IND. PARKWAY AVON, OHIO 44011-1083 U.S.A.
PH#: 1-800-248-1233, 440-934-0444 FAX#: 440-934-0088

SCALE: 1:1

SHEET 1 OF 1