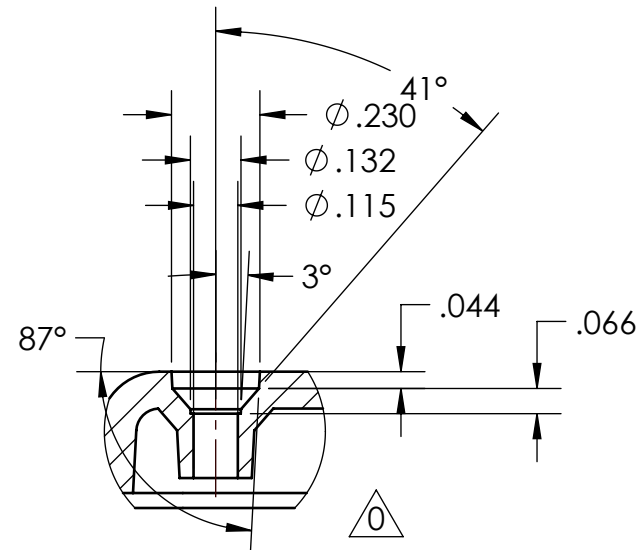
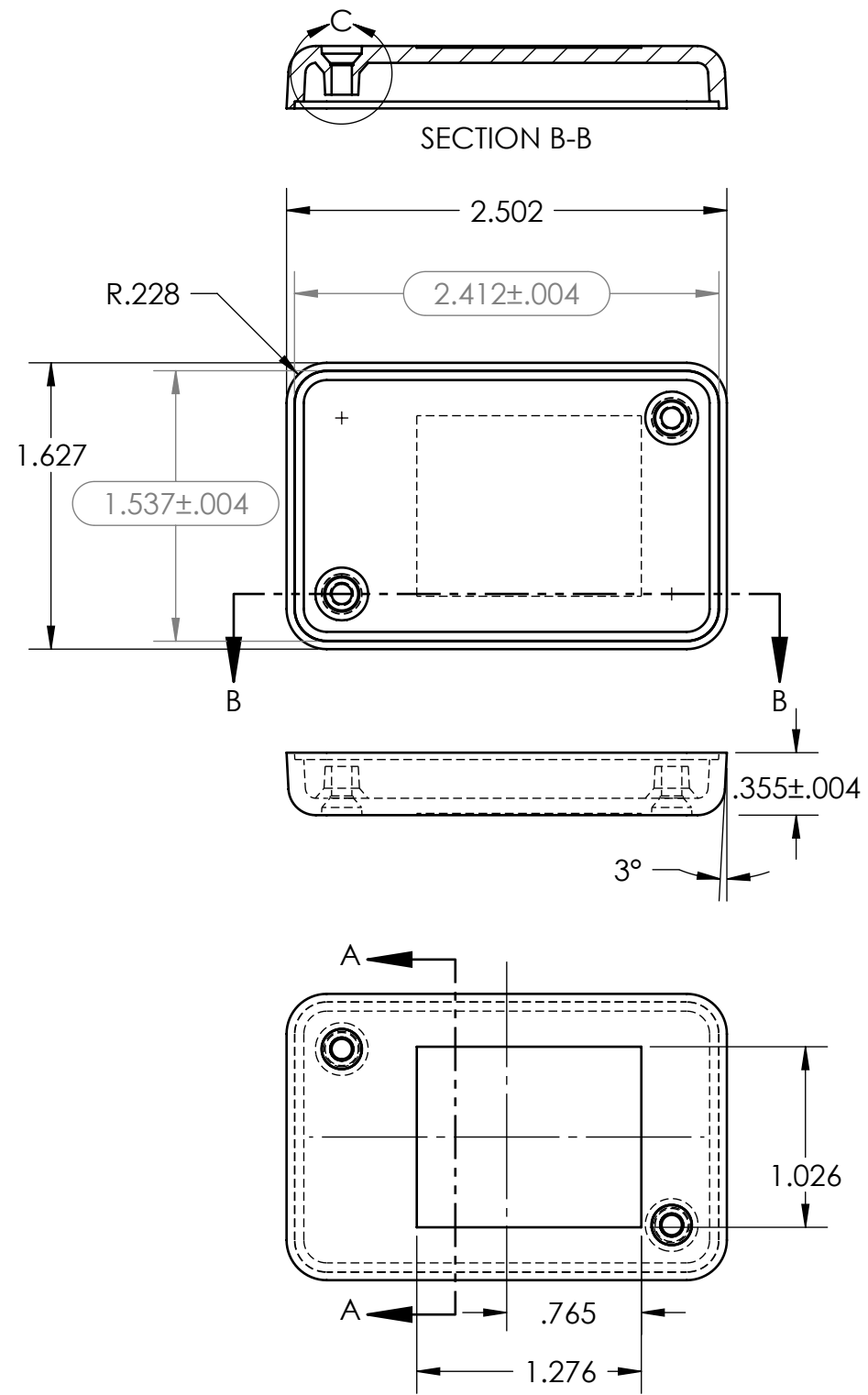


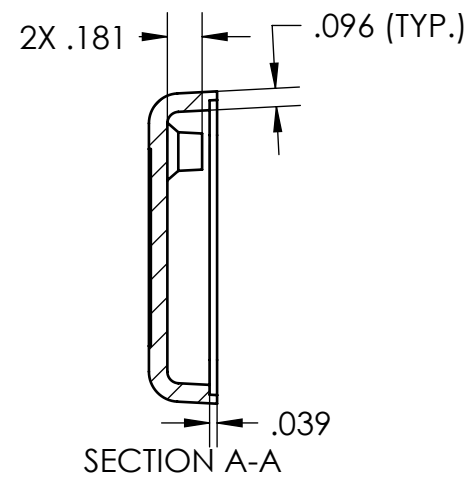
8 7 6 5 4 3 2 1

D
C
B
A

D
C
B
A



DETAIL C
SCALE 2 : 1

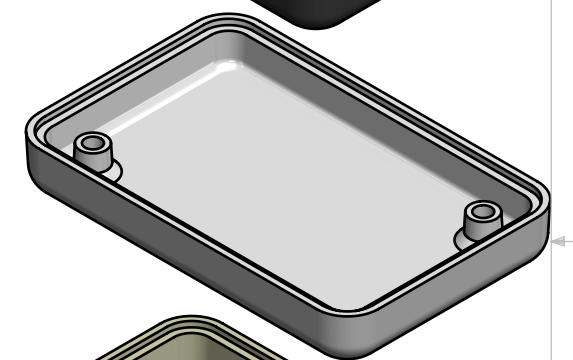


TOLERANCE CHART													
DIMENSION RANGE	0	.039	.118	.236	.394	.591	.866	1.181	1.575	2.087	2.756	3.543	4.724
	.039	.118	.236	.394	.591	.866	1.181	1.575	2.087	2.756	3.543	4.724	6.299
TOOL DEPENDENT	±.007	±.007	±.008	±.008	±.009	±.010	±.011	±.012	±.013	±.015	±.017	±.020	±.024
NON-TOOL DEPENDENT	±.003	±.004	±.004	±.004	±.005	±.006	±.007	±.008	±.009	±.011	±.013	±.016	±.020

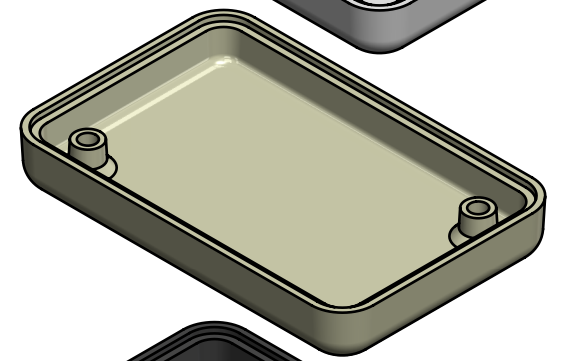
PART NUMBER: KT-35B
MATERIAL SPEC: /ABS/PA765/BK
MATERIAL: ABS
COLOR: BLACK
FLAME RATING: UL94V-0



PART NUMBER: KT-35B*01
MATERIAL SPEC: /ABS/PA765/GY
MATERIAL: ABS
COLOR: GRAY
FLAME RATING: UL94V-0



PART NUMBER: KT-35B*03
MATERIAL SPEC: /ABS/PA765/BO
MATERIAL: ABS
COLOR: BONE
FLAME RATING: UL94V-0



PART NUMBER: KT-35B-NOR
MATERIAL SPEC: /PPO/SE100X/BK
MATERIAL: PPE+PS
COLOR: BLACK
FLAME RATING: UL94V-1



- NOTES:
1. REFER TO SOLID MODEL FOR COMPLETE PART DEFINITION.
2. (INSPECTION DIMENSION)
3. EJECTOR PINS TO BE FLUSH ±.010
4. FLASH .005 MAX
5. GATE TO BE REMOVED FLUSH ±.015

REV.	DESCRIPTION	ZONE	BY	APPR'D	DATE
0	REVISED SCREW DETAILS	C4	D.M.F.	B.M.B.	10/4/2023
REVISIONS					

UNLESS OTHERWISE SPECIFIED:
DIMENSIONS ARE IN: INCHES [mm]
TOLERANCES: ANGULAR: ±2°
TWO PLACE DECIMAL: ±.010
THREE PLACE DECIMAL: ±.005
PRINTED GRAPHICS: ±.010

PROPRIETARY AND CONFIDENTIAL
THE INFORMATION CONTAINED IN THIS
DRAWING IS THE SOLE PROPERTY OF
POLYCASE. ANY REPRODUCTION IN PART
OR AS A WHOLE WITHOUT THE WRITTEN
PERMISSION OF POLYCASE IS PROHIBITED.
CAD FILE: KT-35B

PART NO.
AS NOTED

MATERIAL
-

FLAME RATING
-

SIZE
B

SCALE: 1:1

BASE

REV
0

polycase
1305 CHESTER IND. PARKWAY AVON, OHIO 44011-1083 U.S.A.
PH#: 1-800-248-1233, 440-934-0444 FAX#: 440-934-0088

DRAWN
CHECKED

NAME
B.M.B.

DATE
10/4/2023

SHEET 1 OF 1

8 7 6 5 4 3 2 1