

F

E

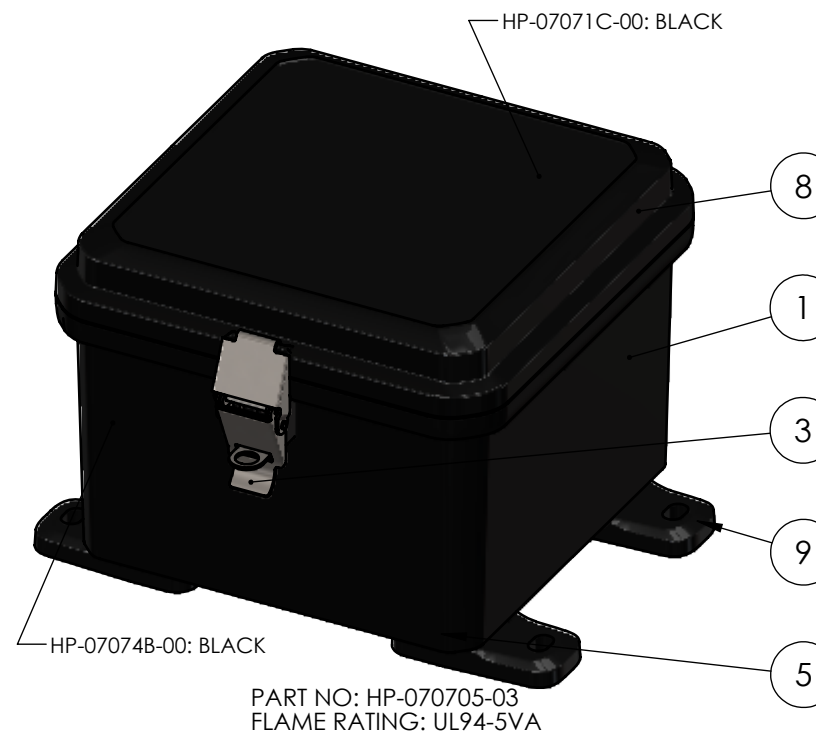
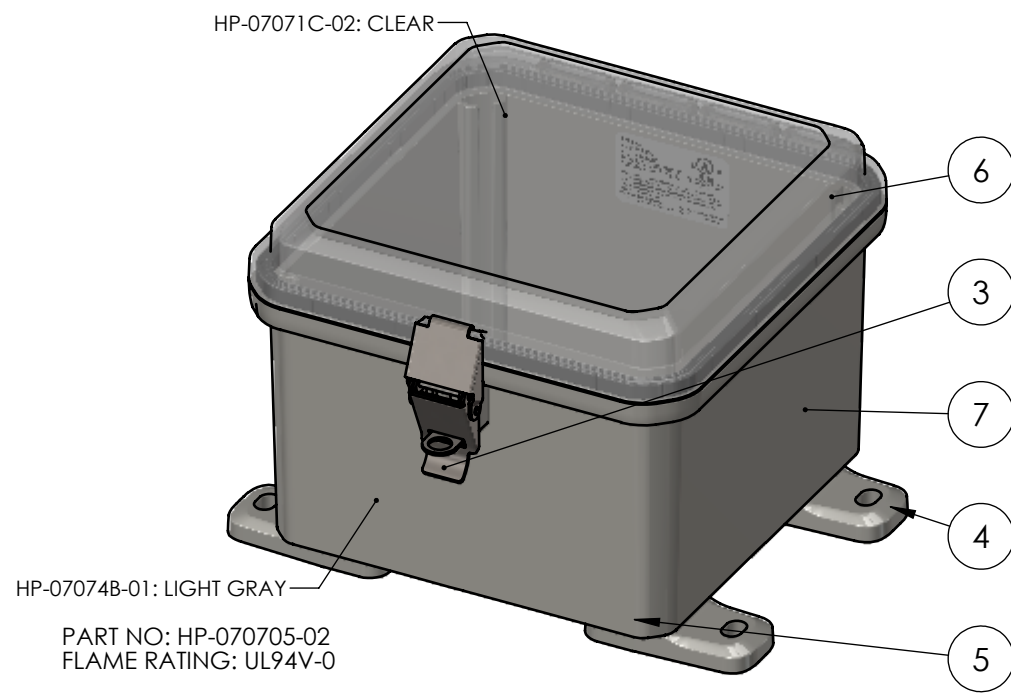
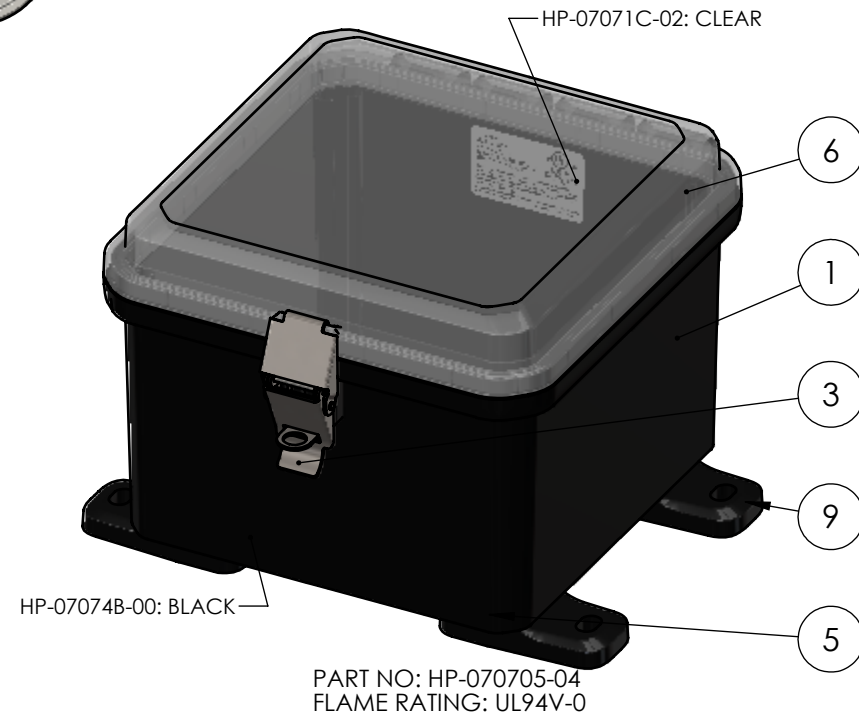
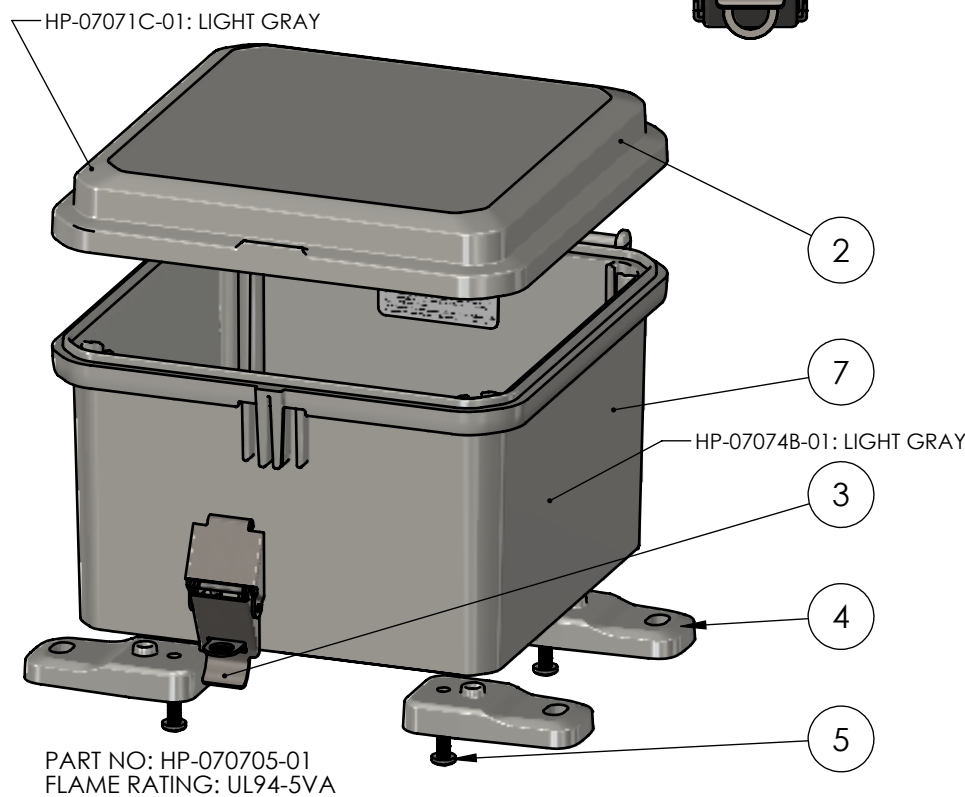
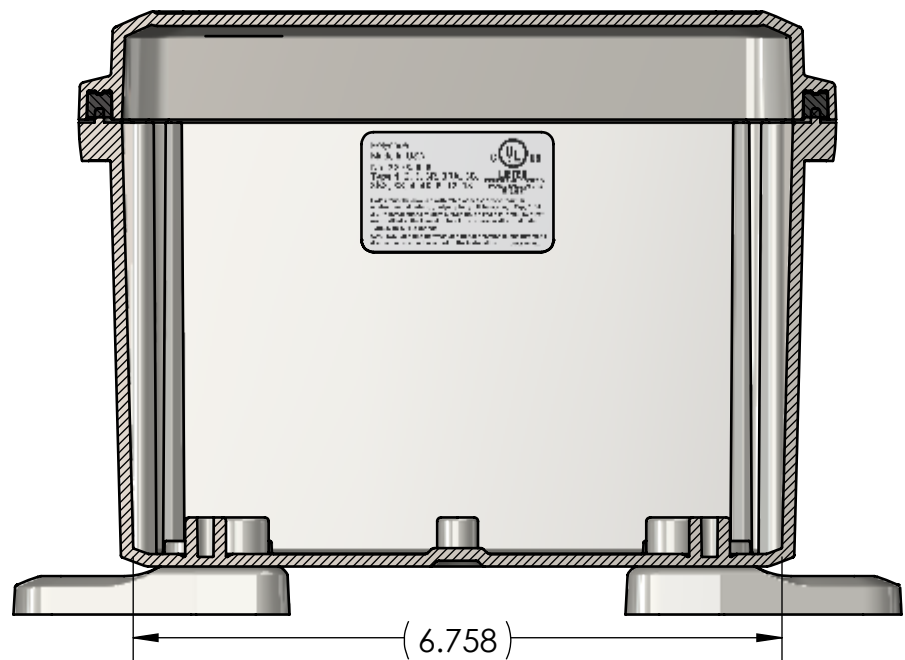
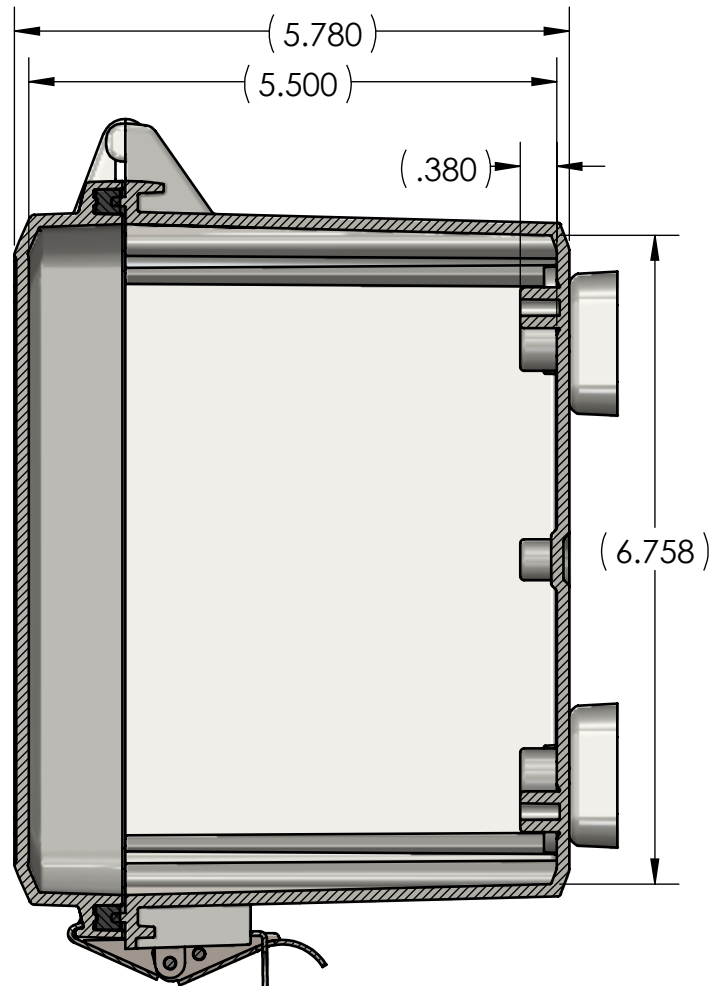
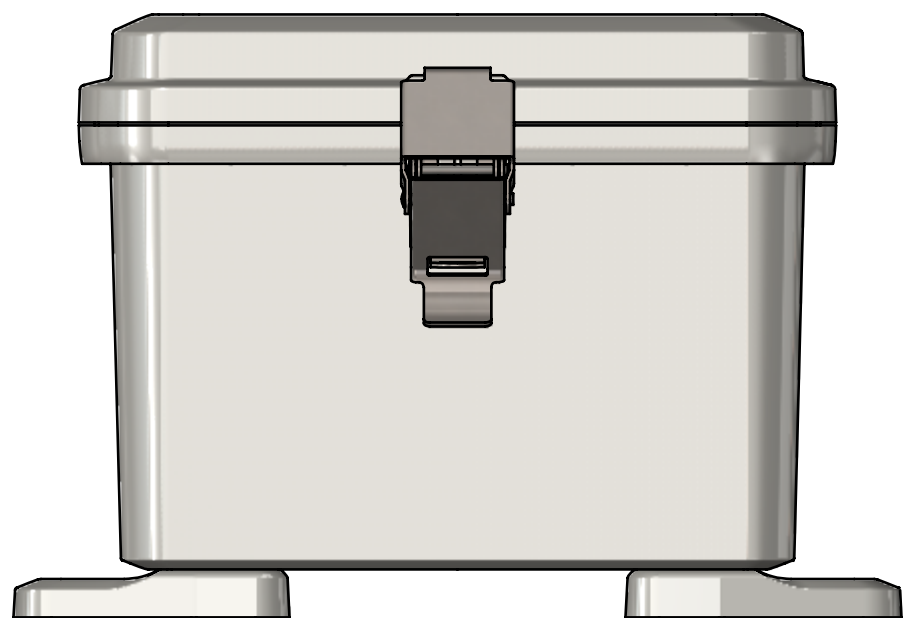
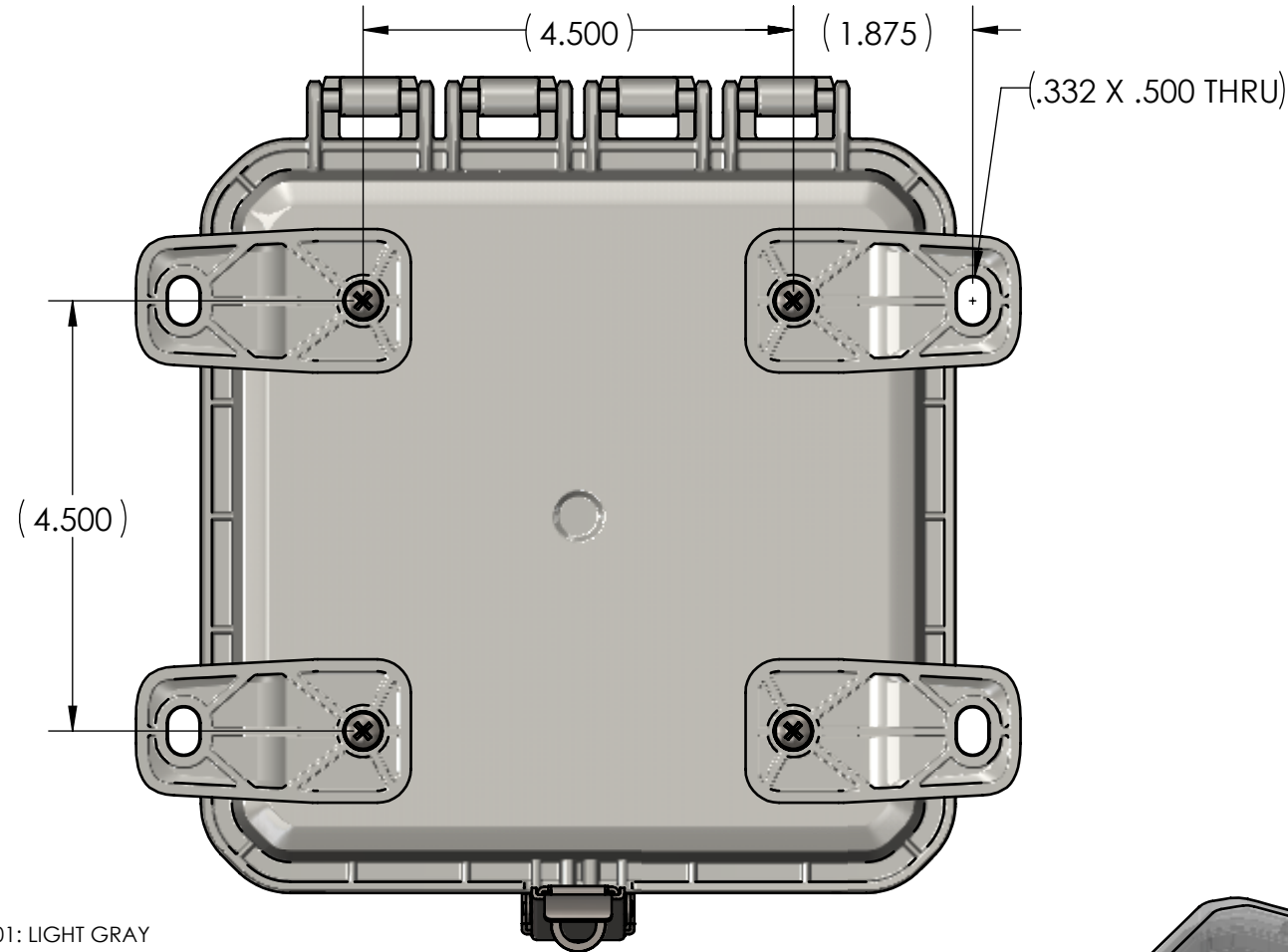
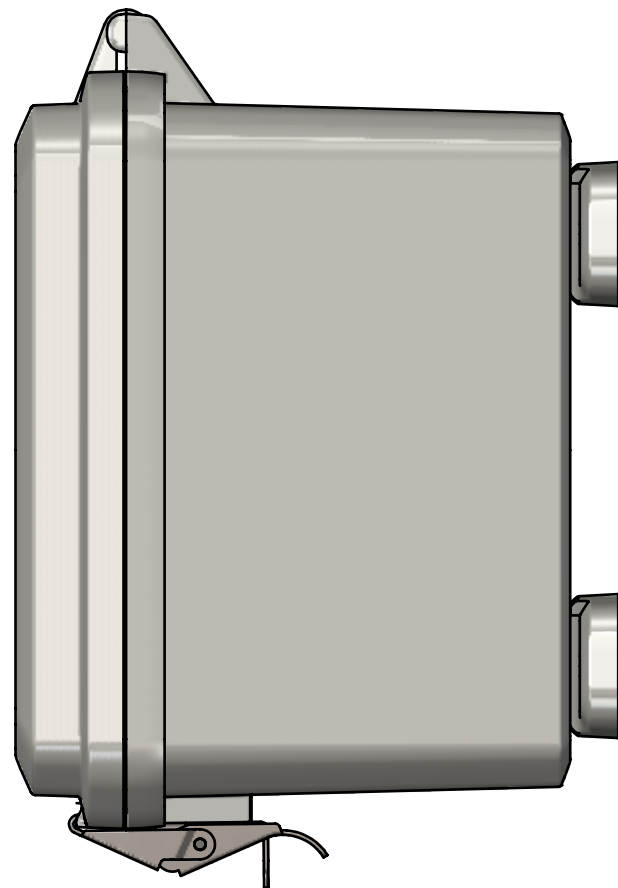
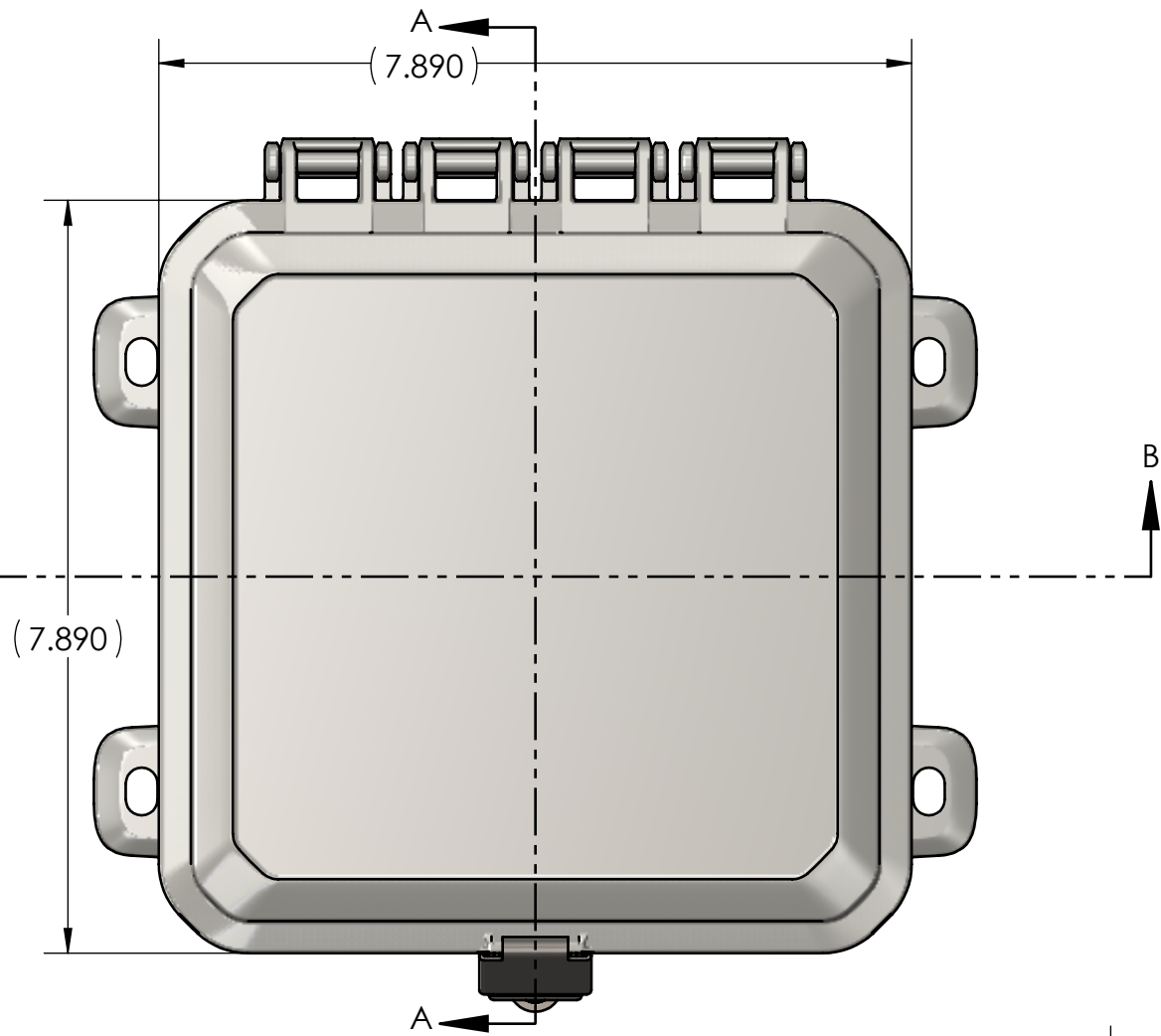
D

C

B

A

BOM Table									
ITEM NO.	PART NUMBER	Rev.	Description	Material	Color	HP-070705-01/QTY.	HP-070705-02/QTY.	HP-070705-04/QTY.	HP-070705-03/QTY.
1	HP-07074BI-00	0	HINGED BASE W/INSERTS			-	-	1	1
2	HP-07071CG-01	0	HINGED COVER W/GASKET			1	-	-	-
3	ZH-01L	0	LATCH ASSEMBLY	304SS		1	1	1	1
4	ZH-01F-01	2	MOUNTING FOOT	PC	LIGHT GRAY	4	4	-	-
5	SCREWS-046	1.1	#10-32 X .75 PAN HEAD, PHILLIPS, 316SS, MACHINE SCREW			4	4	4	4
6	HP-07071CG-02	0	HINGED COVER W/GASKET			-	1	1	-
7	HP-07074BI-01	0	HINGED BASE W/INSERTS			1	1	-	-
8	HP-07071CG-00	0	HINGED COVER W/GASKET			-	-	-	1
9	ZH-01F-00	2	MOUNTING FOOT	PC	BLACK	-	-	4	4



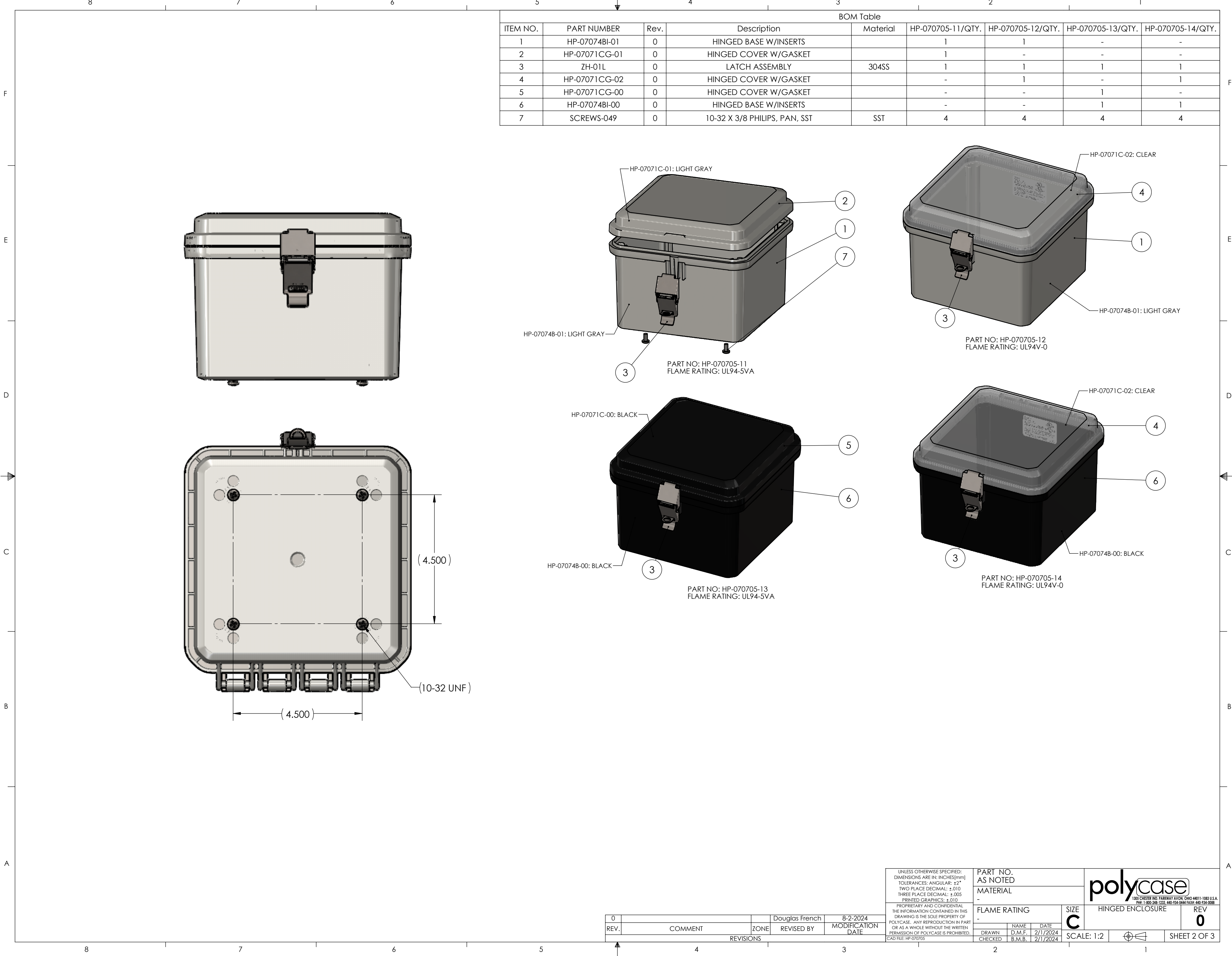
REV.	COMMENT	ZONE	REVISOR	DATE
0			Douglas French	8-2-2024
			REVISOR	DATE

UNLESS OTHERWISE SPECIFIED:  
DIMENSIONS ARE IN: INCHES[mm]  
TOLERANCES: ANGULAR: ±2°  
TWO PLACE DECIMAL: ±.010  
THREE PLACE DECIMAL: ±.005  
PRINTED GRAPHICS: ±.010

PROPRIETARY AND CONFIDENTIAL  
THE INFORMATION CONTAINED IN THIS  
DRAWING IS THE SOLE PROPERTY OF  
POLYCASE. ANY REPRODUCTION IN PART  
OR AS A WHOLE WITHOUT THE WRITTEN  
PERMISSION OF POLYCASE IS PROHIBITED.  
CAD FILE: HP-070705


PART NO. AS NOTED		DATE	
MATERIAL		2/1/2024	
FLAME RATING		2/1/2024	
DRAWN		B.M.B.	
CHECKED		2/1/2024	

polycase		1305 CHESTER RD. PARKWAY AVON, OHIO 44011-1083 U.S.A.	
1305 CHESTER RD. PARKWAY AVON, OHIO 44011-1083 U.S.A.		PH: 1-800-248-1233 440-934-0444 FAX: 440-934-0088	
HINGED ENCLOSURE		REV 0	
SCALE: 1:2		SHEET 1 OF 3	

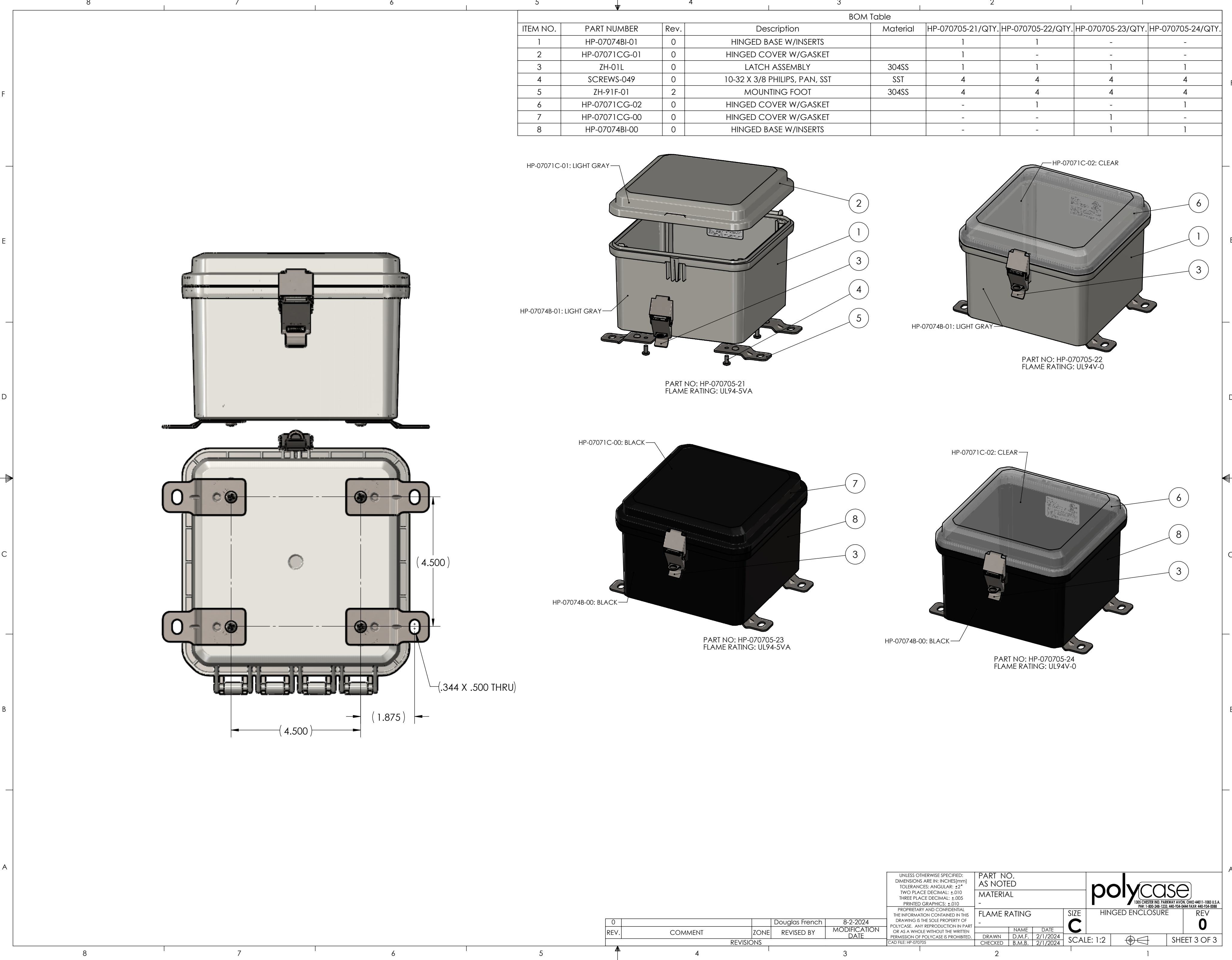


BOM Table								
ITEM NO.	PART NUMBER	Rev.	Description	Material	HP-070705-11/QTY.	HP-070705-12/QTY.	HP-070705-13/QTY.	HP-070705-14/QTY.
1	HP-07074BI-01	0	HINGED BASE W/INSERTS		1	1	-	-
2	HP-07071CG-01	0	HINGED COVER W/GASKET		1	-	-	-
3	ZH-01L	0	LATCH ASSEMBLY	304SS	1	1	1	1
4	HP-07071CG-02	0	HINGED COVER W/GASKET		-	1	-	1
5	HP-07071CG-00	0	HINGED COVER W/GASKET		-	-	1	-
6	HP-07074BI-00	0	HINGED BASE W/INSERTS		-	-	1	1
7	SCREWS-049	0	10-32 X 3/8 PHILIPS, PAN, SST	SST	4	4	4	4

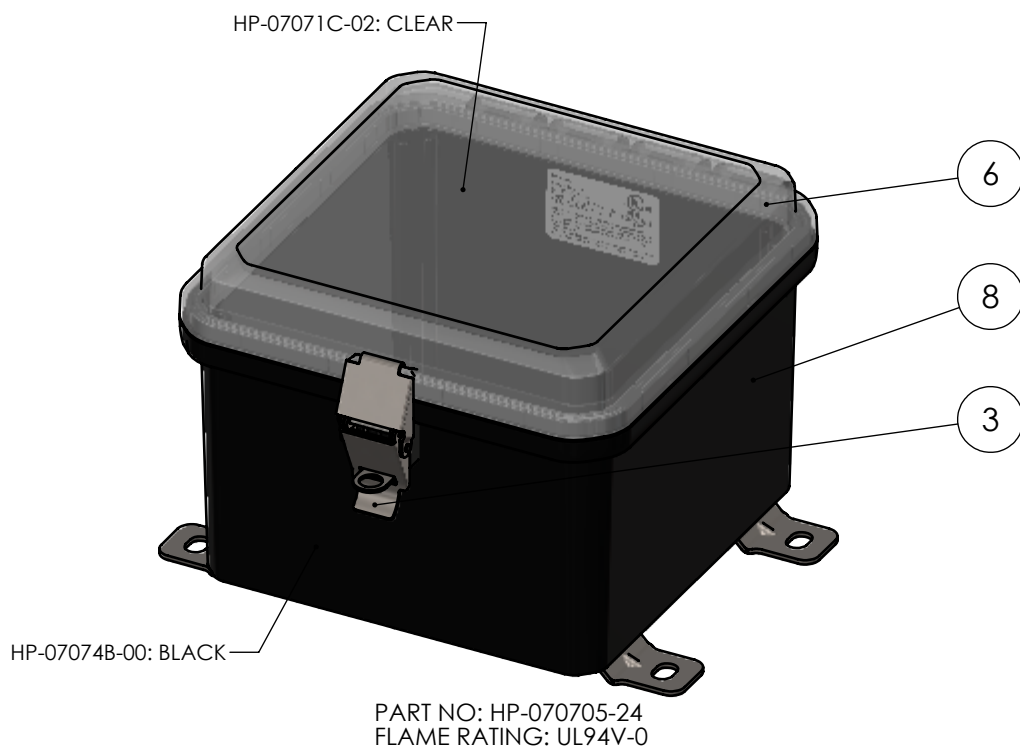
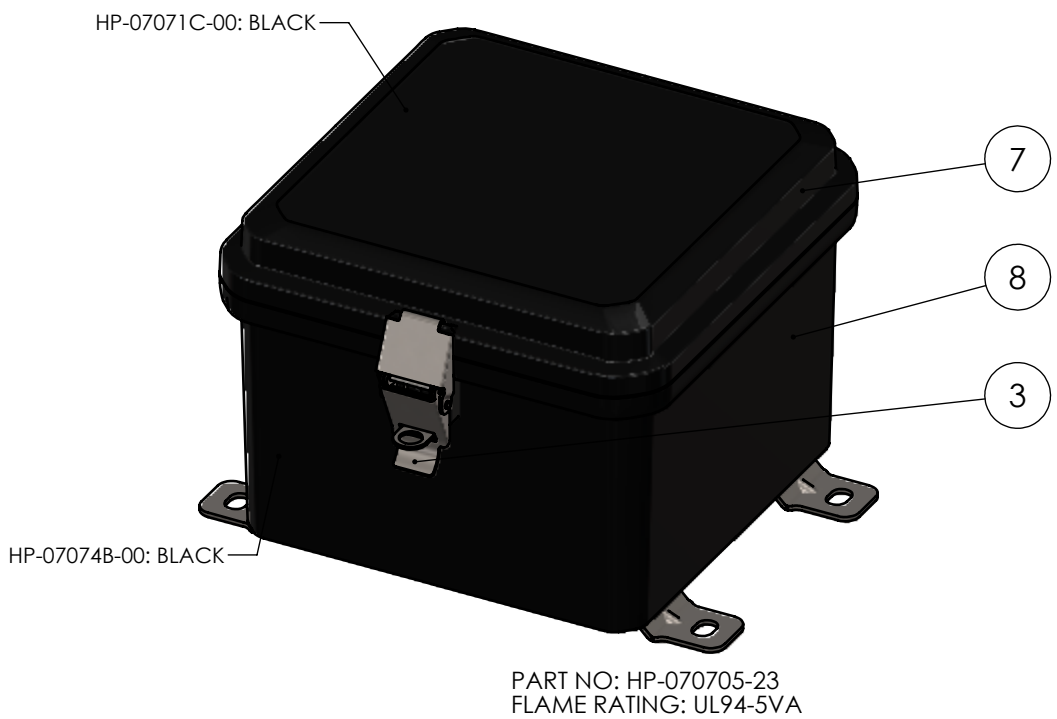
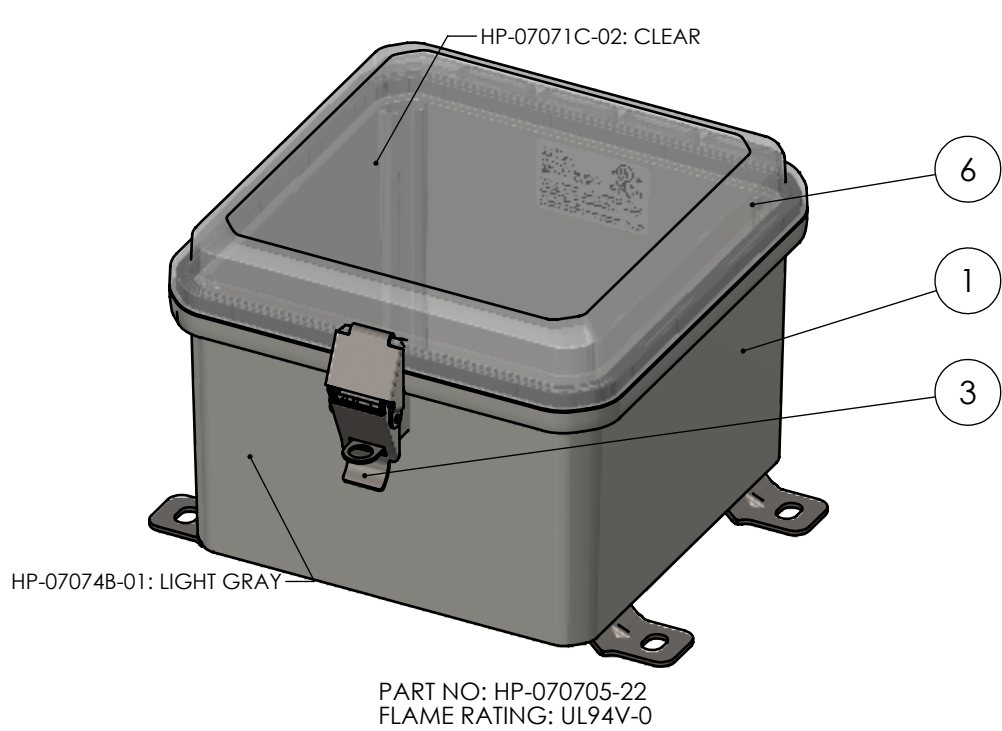
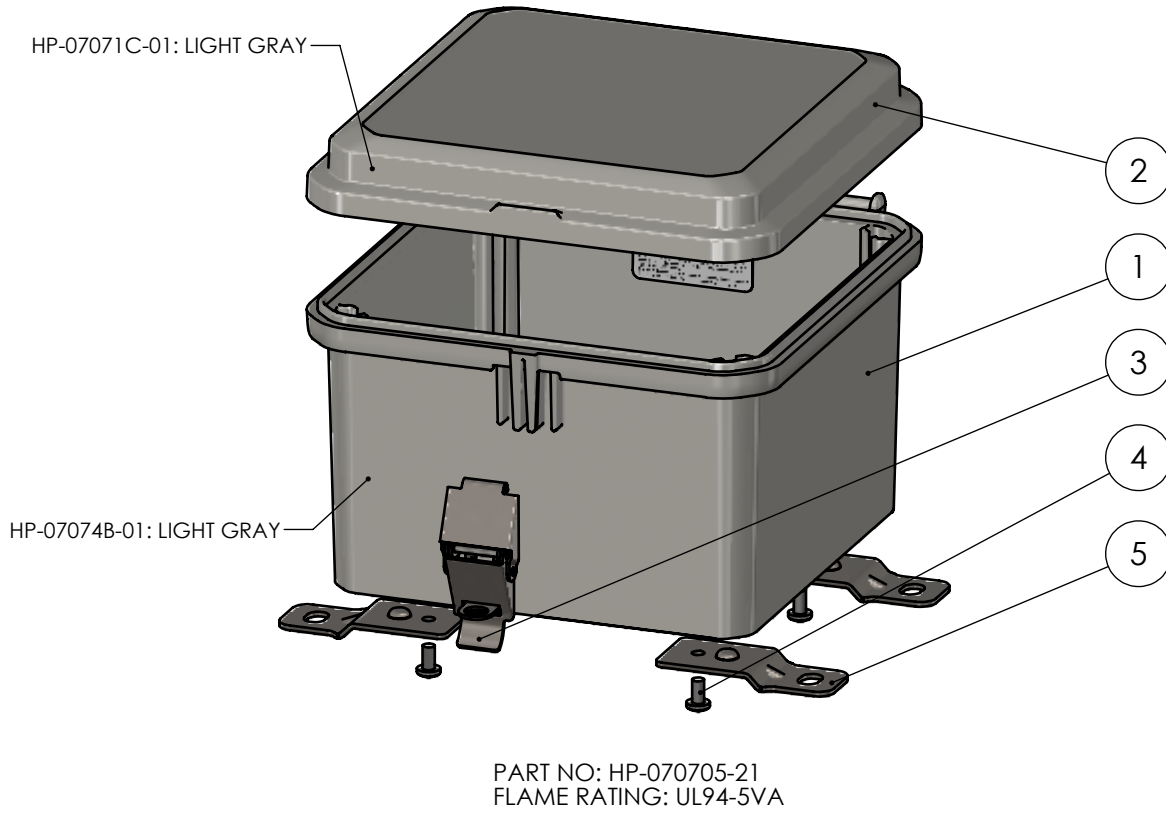
REV.	COMMENT	ZONE	REVISED BY	MODIFICATION DATE
0			Douglas French	8-2-2024

UNLESS OTHERWISE SPECIFIED: DIMENSIONS ARE IN: INCHES[mm] TOLERANCES: ANGULAR: ±2° TWO PLACE DECIMAL: ±.010 THREE PLACE DECIMAL: ±.005 PRINTED GRAPHICS: ±.010  PROPRIETARY AND CONFIDENTIAL THE INFORMATION CONTAINED IN THIS DRAWING IS THE SOLE PROPERTY OF POLYCASE. ANY REPRODUCTION IN PART OR AS A WHOLE WITHOUT THE WRITTEN PERMISSION OF POLYCASE IS PROHIBITED. CAD FILE: HP-070705		PART NO. AS NOTED		<div>polycase</div> <div>1305 CHESTER RD. PARKWAY AVON, OHIO 44011-1083 U.S.A. PH: 1-800-248-1233, 440-934-0444 FAX: 440-934-0088</div>							
		MATERIAL									
		-		FLAME RATING		SIZE		HINGED ENCLOSURE		REV	
		-		-		C		0			
DRAWN		NAME		DATE		SCALE: 1:2				SHEET 2 OF 3	
CHECKED		D.M.F.		2/1/2024		B.M.B.					







BOM Table								
ITEM NO.	PART NUMBER	Rev.	Description	Material	HP-070705-21/QTY.	HP-070705-22/QTY.	HP-070705-23/QTY.	HP-070705-24/QTY.
1	HP-07074BI-01	0	HINGED BASE W/INSERTS		1	1	-	-
2	HP-07071CG-01	0	HINGED COVER W/GASKET		1	-	-	-
3	ZH-01L	0	LATCH ASSEMBLY	304SS	1	1	1	1
4	SCREWS-049	0	10-32 X 3/8 PHILIPS, PAN, SST	SST	4	4	4	4
5	ZH-91F-01	2	MOUNTING FOOT	304SS	4	4	4	4
6	HP-07071CG-02	0	HINGED COVER W/GASKET		-	1	-	1
7	HP-07071CG-00	0	HINGED COVER W/GASKET		-	-	1	-
8	HP-07074BI-00	0	HINGED BASE W/INSERTS		-	-	1	1



REV.	COMMENT	ZONE	REVISED BY	MODIFICATION DATE
0			Douglas French	8-2-2024
REVISIONS				

<div>UNLESS OTHERWISE SPECIFIED: DIMENSIONS ARE IN: INCHES[mm] TOLERANCES: ANGULAR: ±2° TWO PLACE DECIMAL: ±.010 THREE PLACE DECIMAL: ±.005 PRINTED GRAPHICS: ±.010</div> <div>PROPRIETARY AND CONFIDENTIAL THE INFORMATION CONTAINED IN THIS DRAWING IS THE SOLE PROPERTY OF POLYCASE. ANY REPRODUCTION IN PART OR AS A WHOLE WITHOUT THE WRITTEN PERMISSION OF POLYCASE IS PROHIBITED. CAD FILE: HP-070705</div>		PART NO. AS NOTED		<div> 1305 CHESTER RD. PARKWAY AVON, OHIO 44011-1083 U.S.A. PH: 1-800-248-1233, 440-934-0444 FAX: 440-934-0088</div>		
		MATERIAL -				
		FLAME RATING -		SIZE C	HINGED ENCLOSURE	REV 0
		DRAWN CHECKED		NAME D.M.F. B.M.B.	DATE 2/1/2024 2/1/2024	<div></div> SHEET 3 OF 3
		SCALE: 1:2				