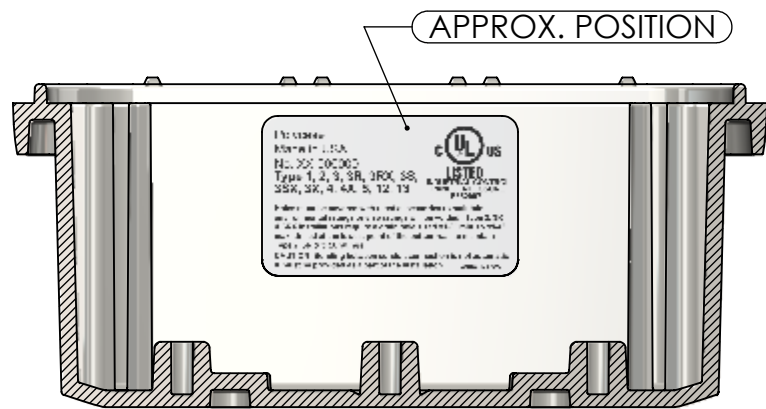
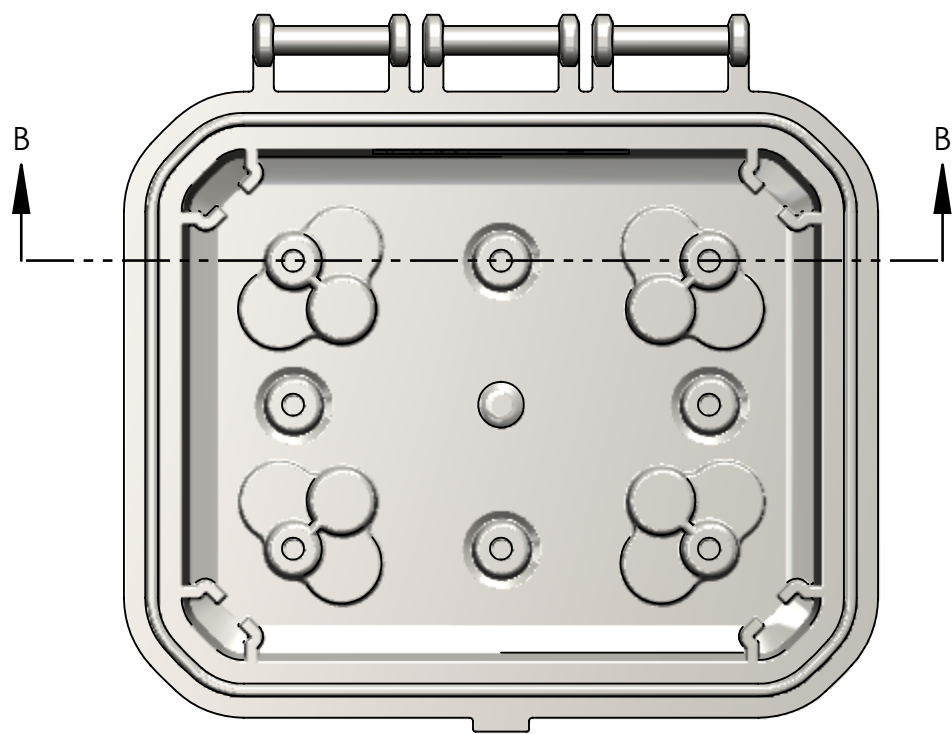
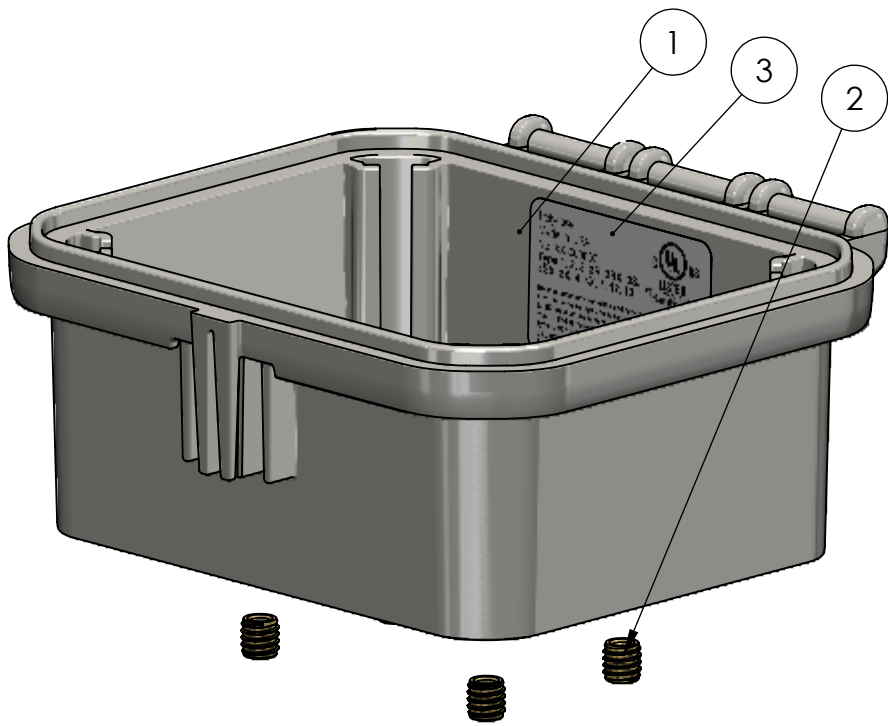
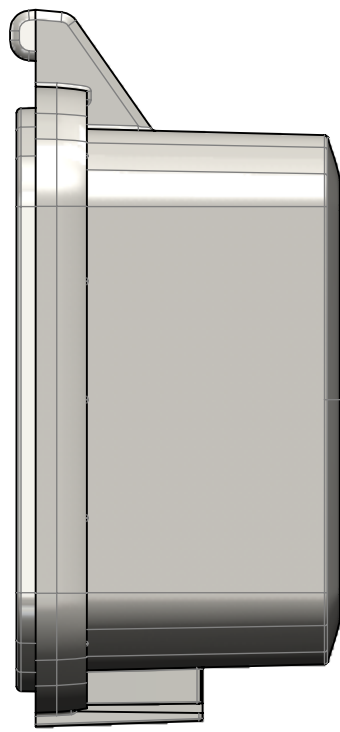


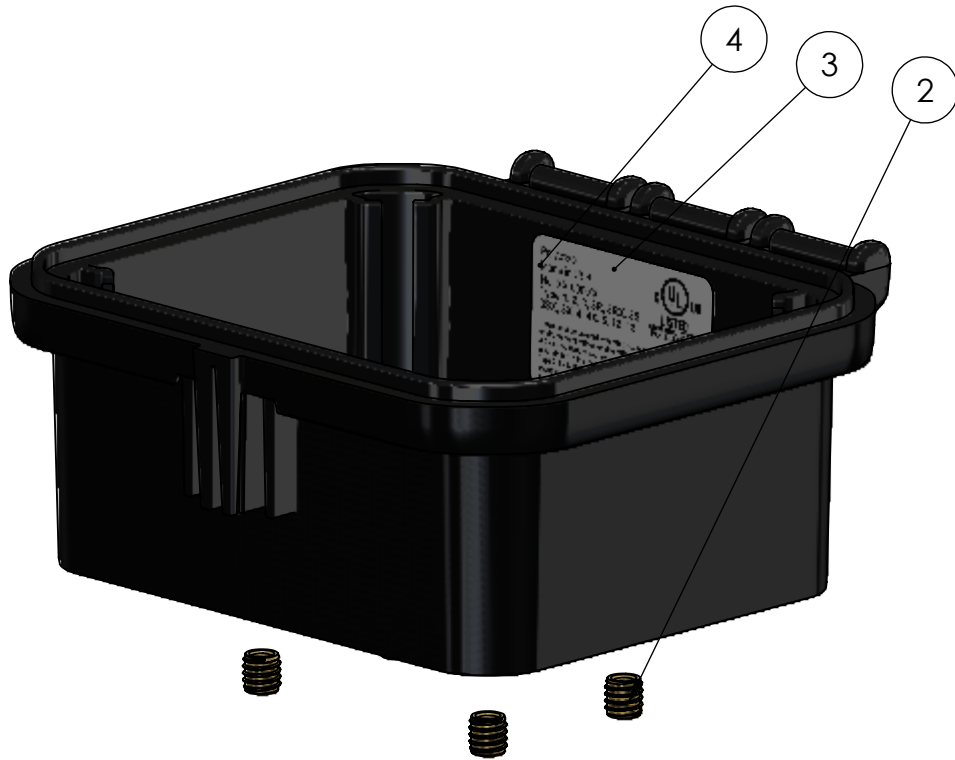
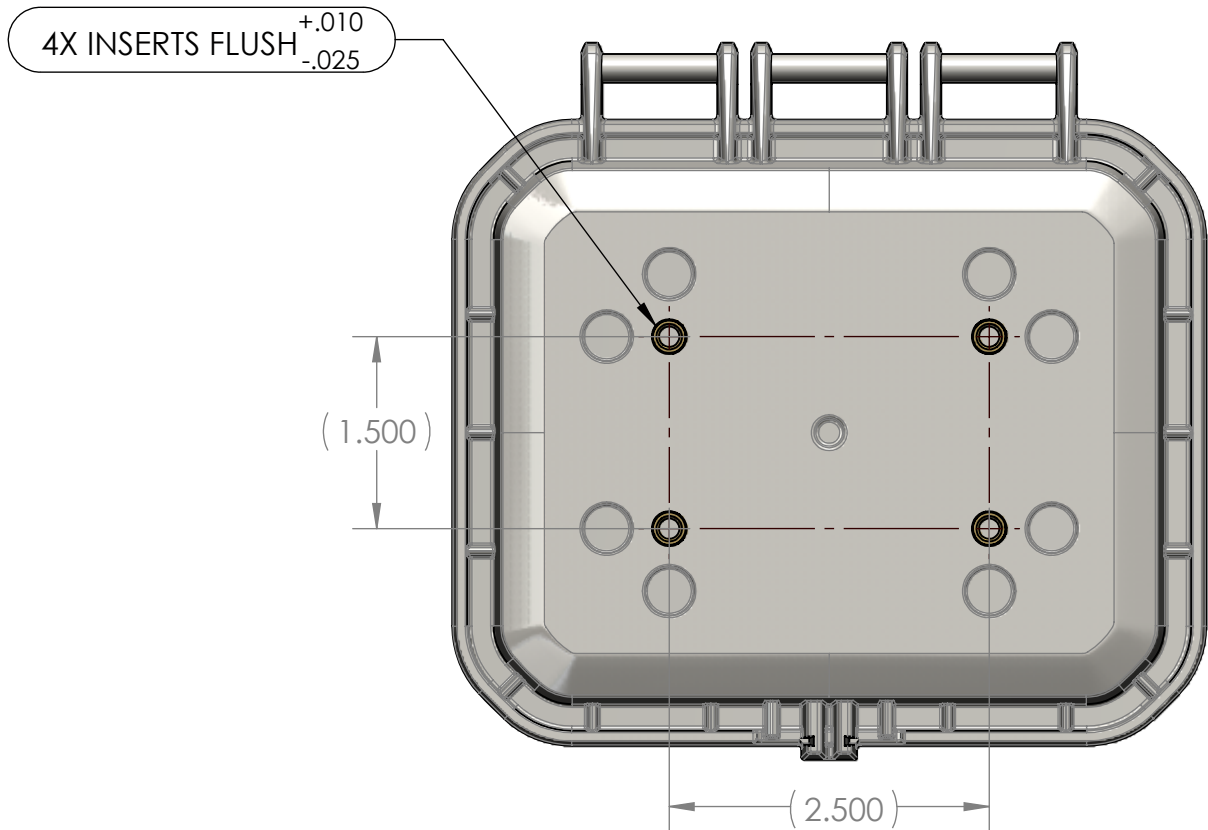
BOM Table								
ITEM NO.	PART NUMBER	Rev.	Description	Material	FlameRating	Color	HP-05042BI-01/QTY.	HP-05042BI-00/QTY.
1	HP-05042B-01	2	BASE, HINGED	PC	UL94-5VA	LIGHT GRAY	1	-
2	INSERTS-4	0	SELF-TAPPING INSERT: 10-32 UNF X .296 LG.	BRASS 360			4	4
3	LABEL-105	0	UL LABEL				1	1
4	HP-05042B-00	2	BASE, HINGED	PC	UL94-5VA	BLACK	-	1



SECTION B-B



HP-05042BI-01



HP-05042BI-00

REV.	DESCRIPTION	ZONE	BY	APPR'D	DATE
REVISIONS					

UNLESS OTHERWISE SPECIFIED: DIMENSIONS ARE IN: INCHES[mm] TOLERANCES: ANGULAR: ±2° TWO PLACE DECIMAL: ±.010 THREE PLACE DECIMAL: ±.005 PRINTED GRAPHICS: ±.010		PART NO. AS NOTED		polycase	
PROPRIETARY AND CONFIDENTIAL THE INFORMATION CONTAINED IN THIS DRAWING IS THE SOLE PROPERTY OF POLYCASE. ANY REPRODUCTION IN PART OR AS A WHOLE WITHOUT THE WRITTEN PERMISSION OF POLYCASE IS PROHIBITED. CAD FILE: HP-05042BI		MATERIAL		1305 CHESTER IND. PARKWAY AVON, OHIO 44011-1083 U.S.A. PH: 1-800-248-1233, 440-934-0444 FAX: 440-934-0088	
FLAME RATING		SIZE		HINGED BASE W/INSERTS	
DRAWN CHECKED		NAME D.M.F. B.M.B.		DATE 8/1/2023 8/1/2023	
SCALE: 1:1.5		REV		0	
SHEET 1 OF 1					