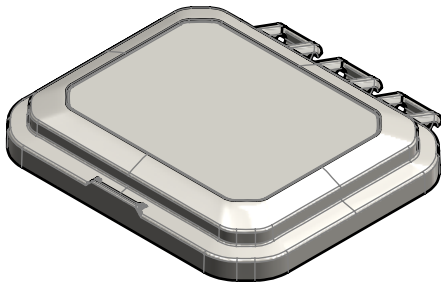
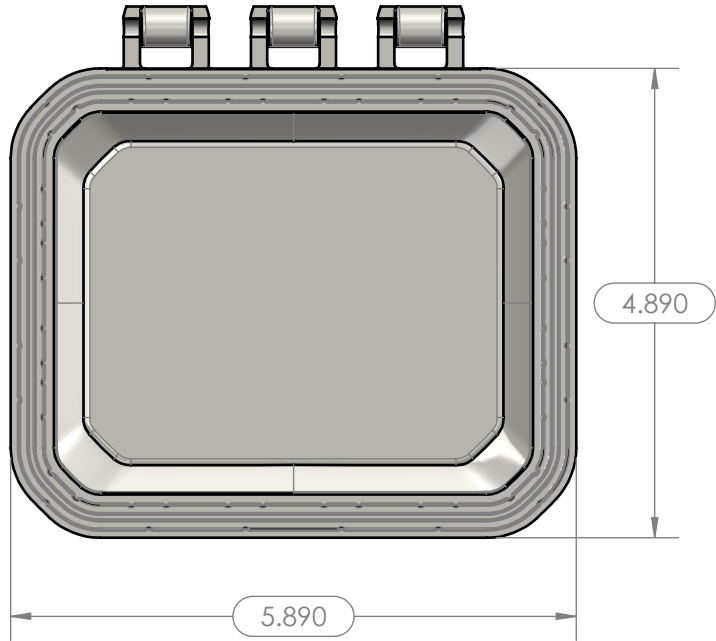
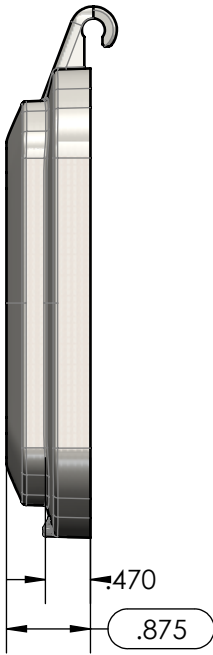
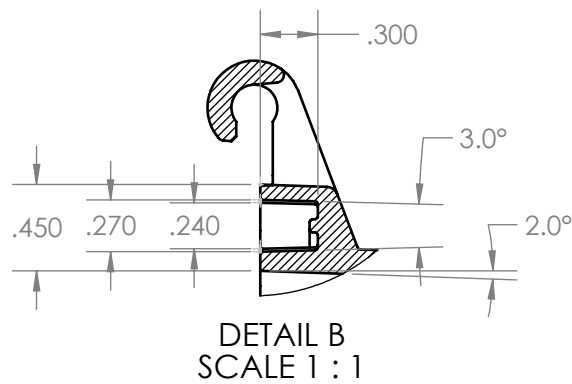
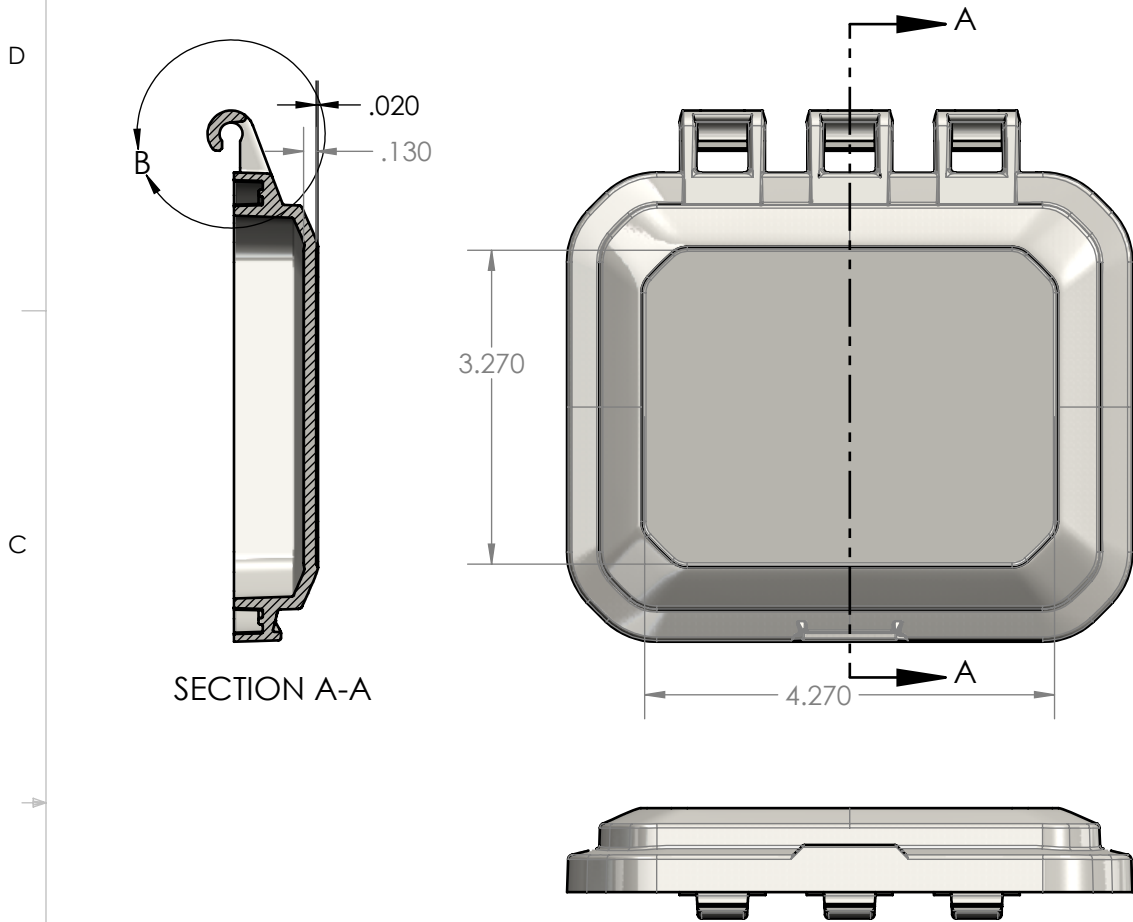


TOLERANCE CHART																
DIMENSION RANGE	0	.039	.118	.236	.394	.591	.866	1.181	1.575	2.087	2.756	3.543	4.724	6.299	7.874	9.843
	.039	.118	.236	.394	.591	.866	1.181	1.575	2.087	2.756	3.543	4.724	6.299	7.874	9.843	12.402
TOOL DEPENDENT	±.007	±.007	±.008	±.008	±.009	±.010	±.011	±.012	±.013	±.015	±.017	±.020	±.024	±.028	±.035	.043
NON-TOOL DEPENDENT	±.003	±.004	±.004	±.004	±.005	±.006	±.007	±.008	±.009	±.011	±.013	±.016	±.020	±.024	±.031	.039



PART NUMBER: HP-05041C-01
MATERIAL: PC
MATERIAL SPEC: /PC/XXX/GY
COLOR: LIGHT GRAY
FLAME RATING: UL94-5VA



PART NUMBER: HP-05041C-02
MATERIAL: PC
MATERIAL SPEC: /PC/XXX/CL
COLOR: CLEAR
FLAME RATING: UL94V-0



PART NUMBER: HP-05041C-00
MATERIAL: PC
MATERIAL SPEC: /PC/XXX/BK
COLOR: BLACK
FLAME RATING: UL94-5VA

- NOTES:
- REFER TO SOLID MODEL FOR COMPLETE PART DEFINITION.
 - INSPECTION DIMENSION
 - EJECTOR PINS TO BE FLUSH ±.010
 - FLASH .005 MAX
 - GATE TO BE REMOVED FLUSH ±.020

1	UPDATED FLAME RATING FORMAT		Douglas French	3-11-2024
0			Douglas French	8-18-2023
REV.	COMMENT	ZONE	REVISED BY	MODIFICATION DATE
REVISIONS				

UNLESS OTHERWISE SPECIFIED:
DIMENSIONS ARE IN: INCHES [mm]
TOLERANCES: ANGULAR: ±2°
TWO PLACE DECIMAL: ±.010
THREE PLACE DECIMAL: ±.005
PRINTED GRAPHICS: ±.010
PROPRIETARY AND CONFIDENTIAL
THE INFORMATION CONTAINED IN THIS
DRAWING IS THE SOLE PROPERTY OF
POLYCASE. ANY REPRODUCTION IN PART
OR AS A WHOLE WITHOUT THE WRITTEN
PERMISSION OF POLYCASE IS PROHIBITED.
CAD FILE: HP-05041C

PART NO. AS NOTED		
MATERIAL -		
FLAME RATING -		
DRAWN	NAME	DATE
CHECKED	B.M.B.	8/1/2023

1305 CHESTER IND. PARKWAY AVON, OHIO 44011-1083 U.S.A.
PH#: 1-800-248-1233, 440-934-0444 FAX#: 440-934-0088

COVER, HINGED		REV 1
SCALE: 1:2		SHEET 1 OF 1