

F

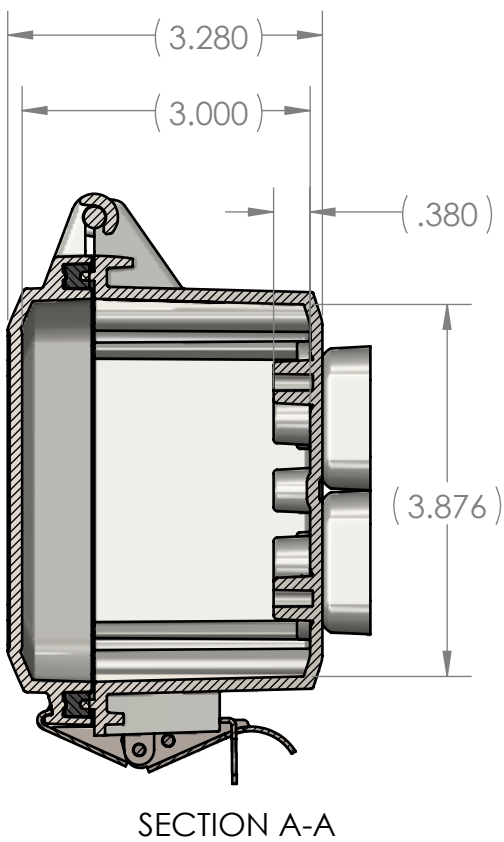
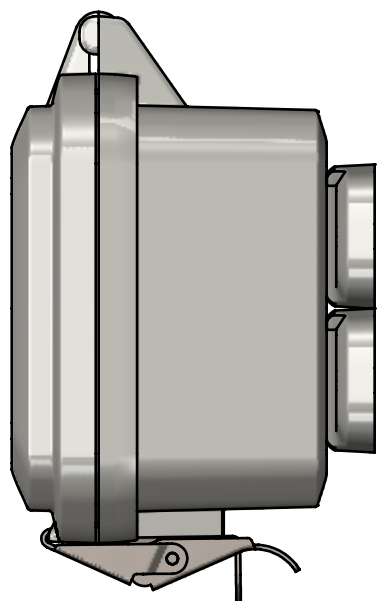
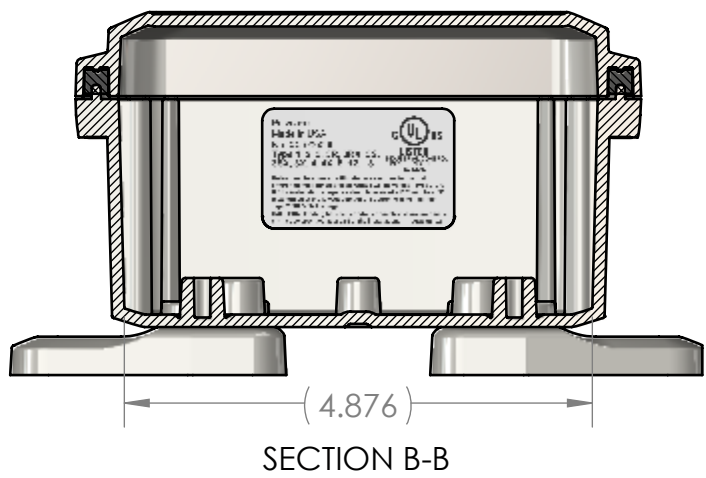
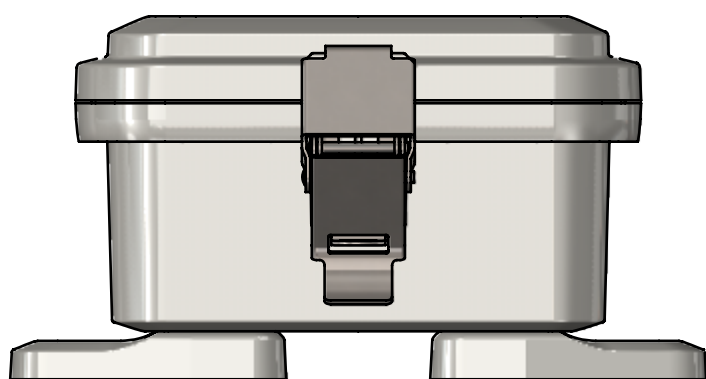
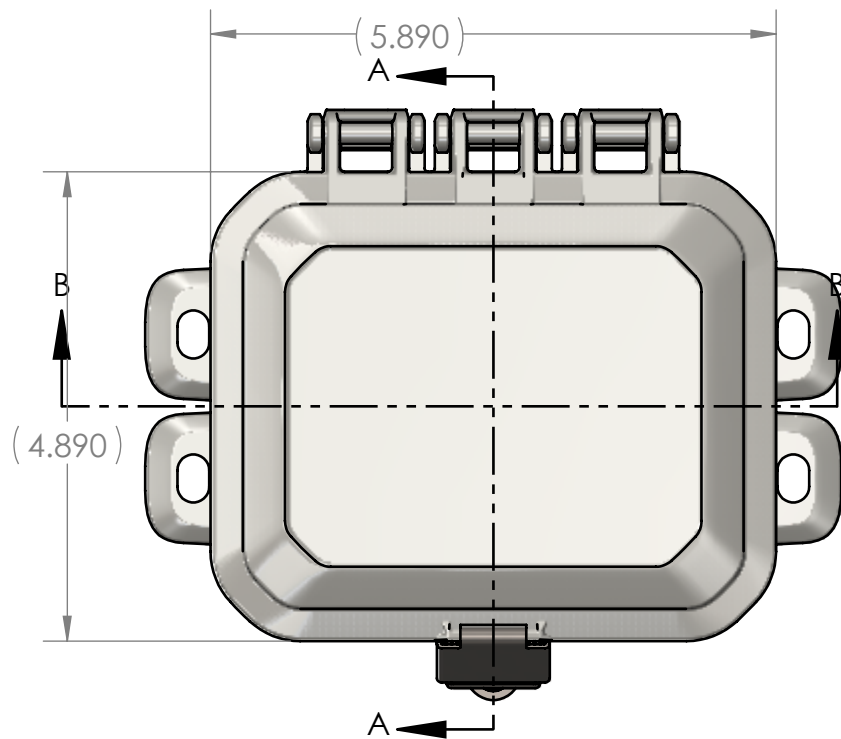
E

D

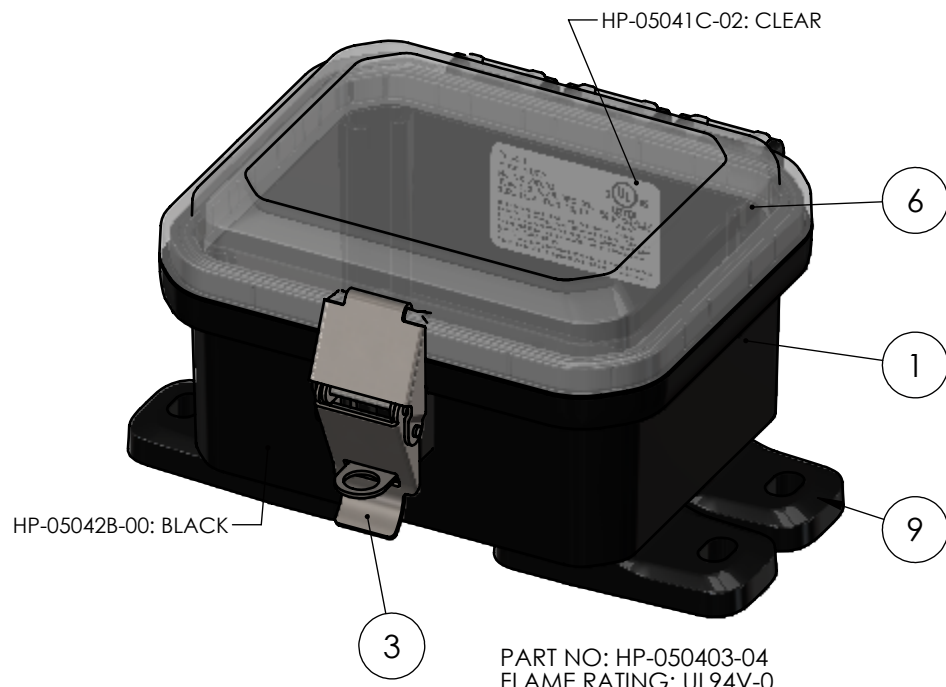
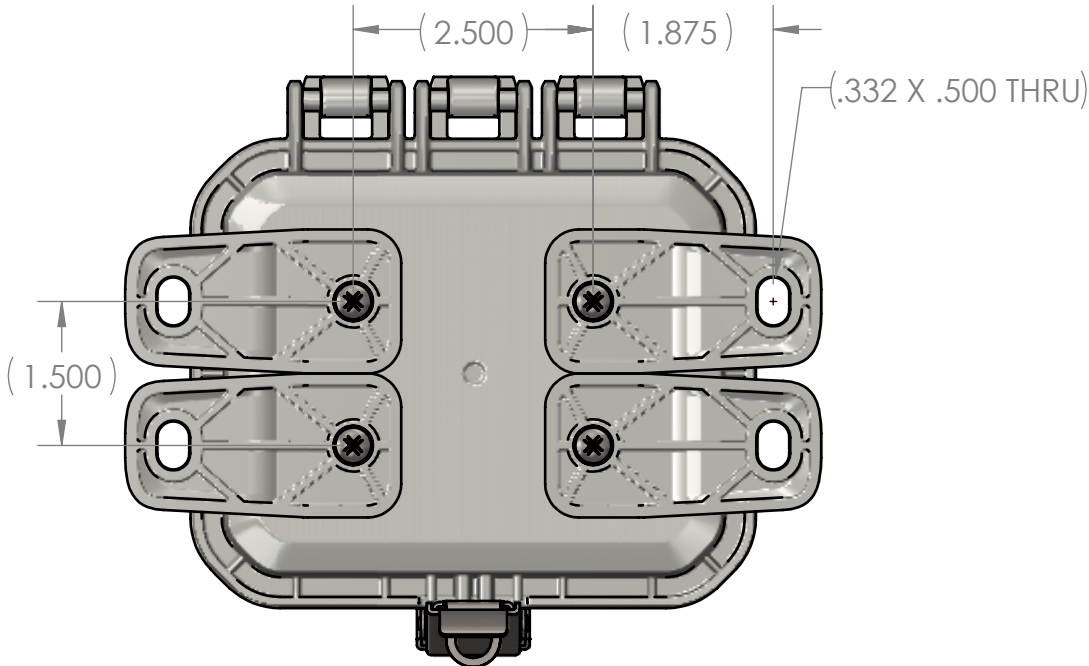
C

B

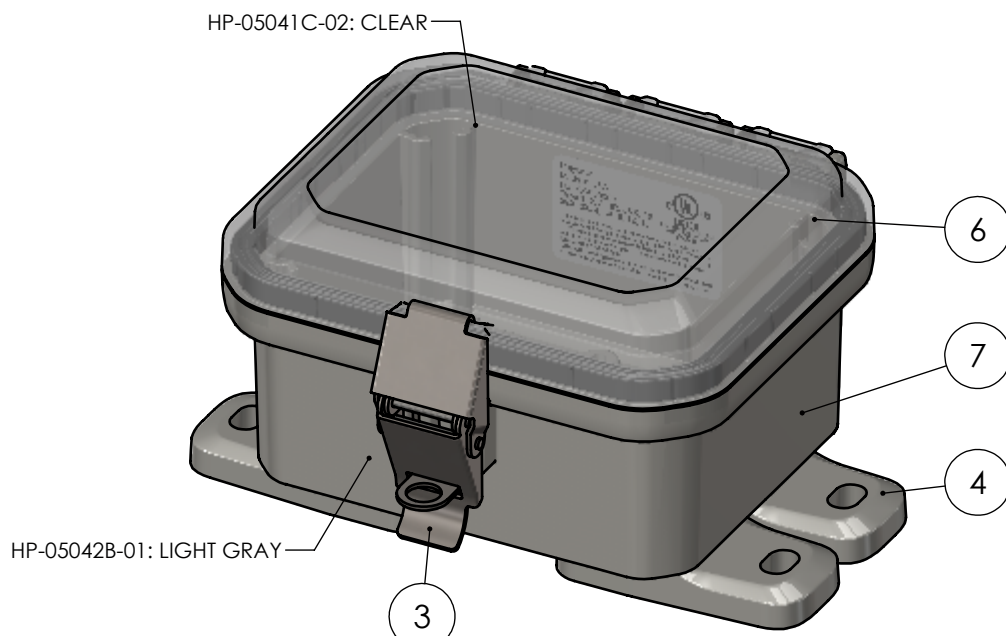
A



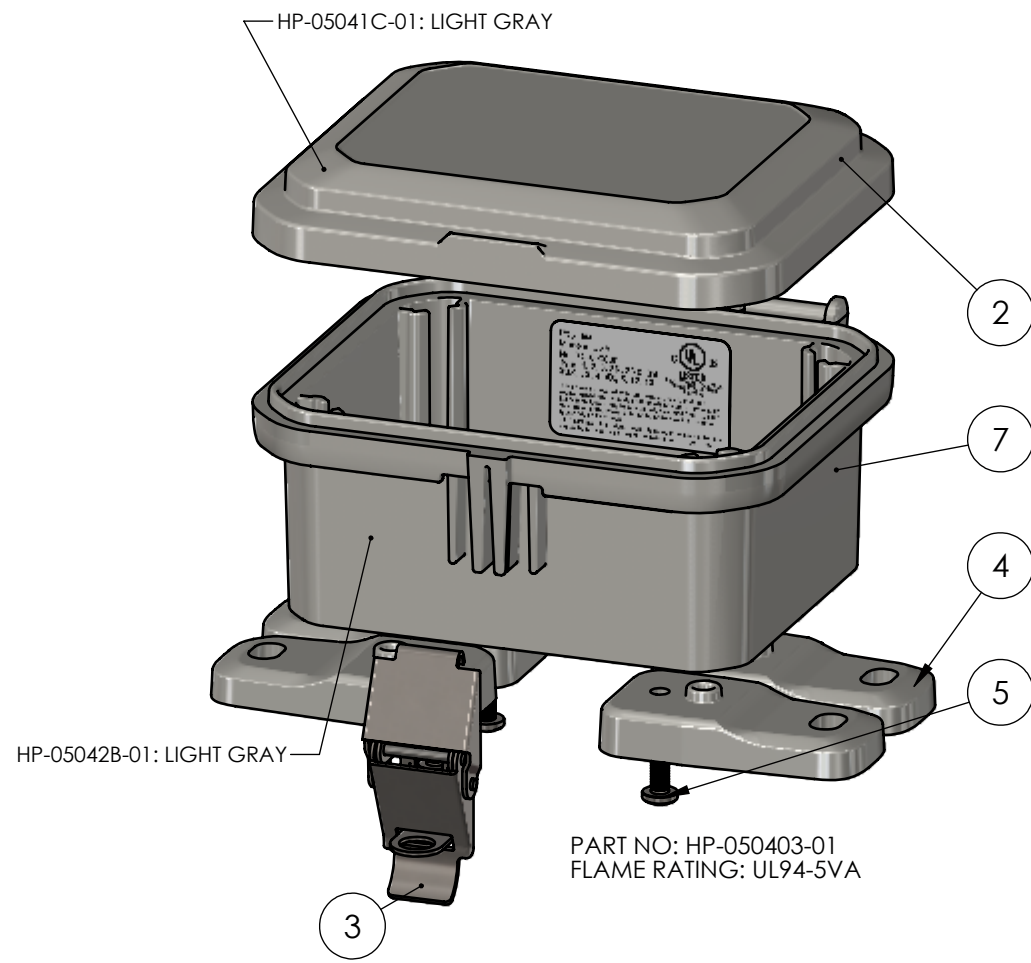
SECTION A-A



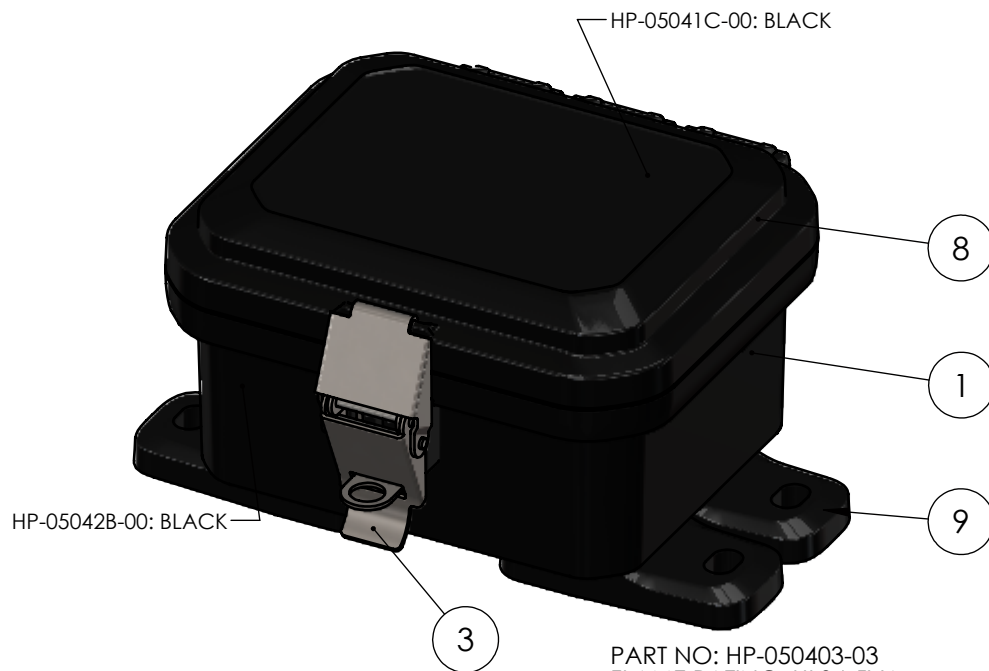
PART NO: HP-050403-04  
FLAME RATING: UL94V-0



PART NO: HP-050403-02  
FLAME RATING: UL94V-0



PART NO: HP-050403-01  
FLAME RATING: UL94-5VA



PART NO: HP-050403-03  
FLAME RATING: UL94-5VA

BOM Table									
ITEM NO.	PART NUMBER	Rev.	Description	Material	Color	HP-050403-01/QTY.	HP-050403-02/QTY.	HP-050403-04/QTY.	HP-050403-03/QTY.
1	HP-05042BI-00	0	HINGED BASE W/INSERTS			-	-	1	1
2	HP-05041CG-01	0	HINGED COVER W/GASKET			1	-	-	-
3	ZH-01L	0	LATCH ASSEMBLY	304SS		1	1	1	1
4	ZH-01F-01	1	MOUNTING FOOT	PC	LIGHT GRAY	4	4	-	-
5	SCREWS-046	1.1	#10-32 X .75 PAN HEAD, PHILLIPS, 316SS, MACHINE SCREW			4	4	4	4
6	HP-05041CG-02	0	HINGED COVER W/GASKET			-	1	1	-
7	HP-05042BI-01	0	HINGED BASE W/INSERTS			1	1	-	-
8	HP-05041CG-00	0	HINGED COVER W/GASKET			-	-	-	1
9	ZH-01F-00	1	MOUNTING FOOT	PC	BLACK	-	-	4	4

REV.	DESCRIPTION	ZONE	BY	APPR'D	DATE
REVISIONS					

UNLESS OTHERWISE SPECIFIED:  
DIMENSIONS ARE IN: INCHES[mm]  
TOLERANCES: ANGULAR: ±2°  
TWO PLACE DECIMAL: ±.010  
THREE PLACE DECIMAL: ±.005  
PRINTED GRAPHICS: ±.010  
PROPRIETARY AND CONFIDENTIAL  
THE INFORMATION CONTAINED IN THIS  
DRAWING IS THE SOLE PROPERTY OF  
POLYCASE. ANY REPRODUCTION IN PART  
OR AS A WHOLE WITHOUT THE WRITTEN  
PERMISSION OF POLYCASE IS PROHIBITED.  
CAD FILE: HP-050403

PART NO. AS NOTED	MATERIAL
-	-
FLAME RATING	SIZE
-	C
DRAWN CHECKED	NAME D.M.F. B.M.B.
	DATE 8/1/2023 8/1/2023

**polycase**  
1305 CHESTER RD. PARKWAY AVON, OHIO 44011-1083 U.S.A.  
PH: 1-800-248-1233 440-934-0444 FAX: 440-934-0088  
HINGED ENCLOSURE  
REV 0  
SCALE: 1:2  
SHEET 1 OF 3

F

E

D

C

B

A

F

E

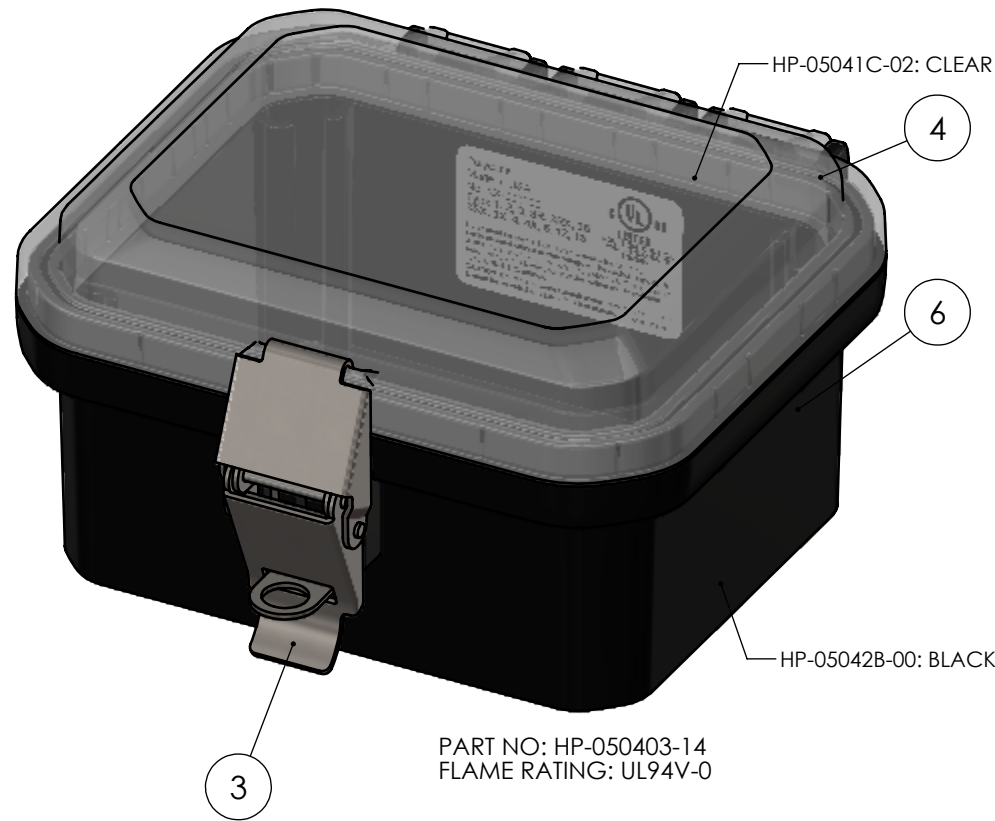
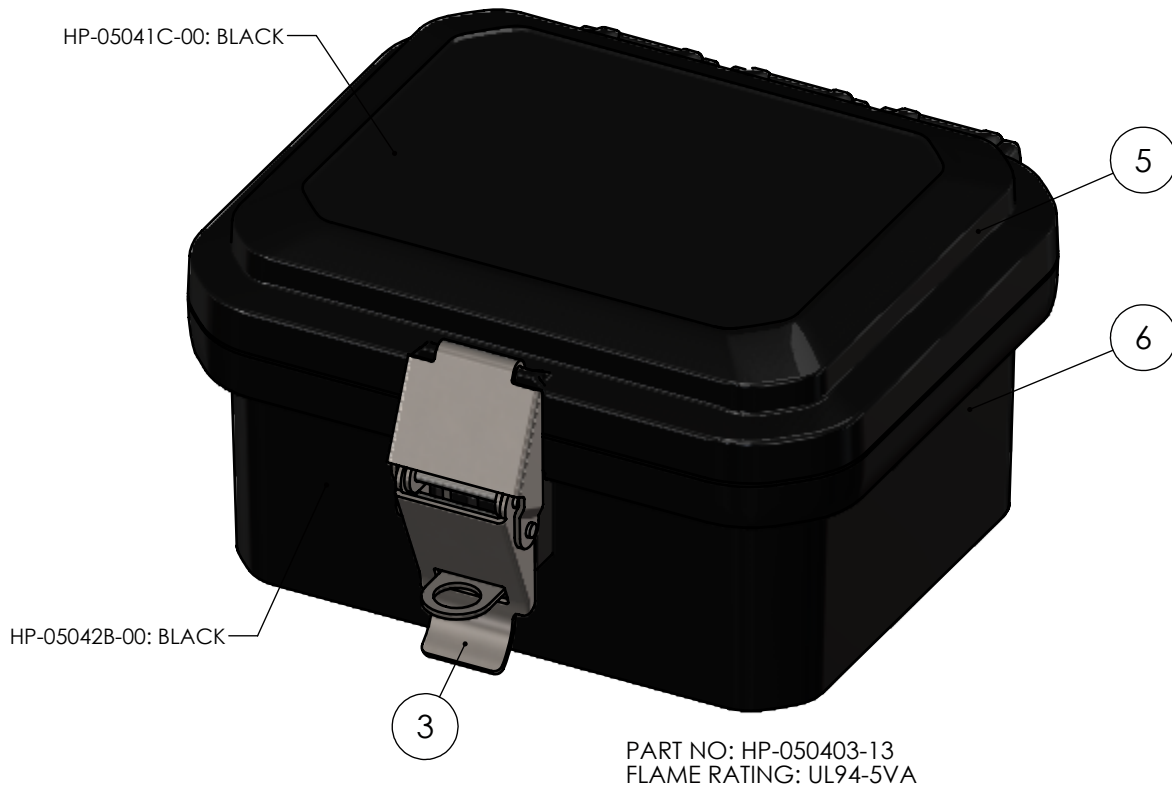
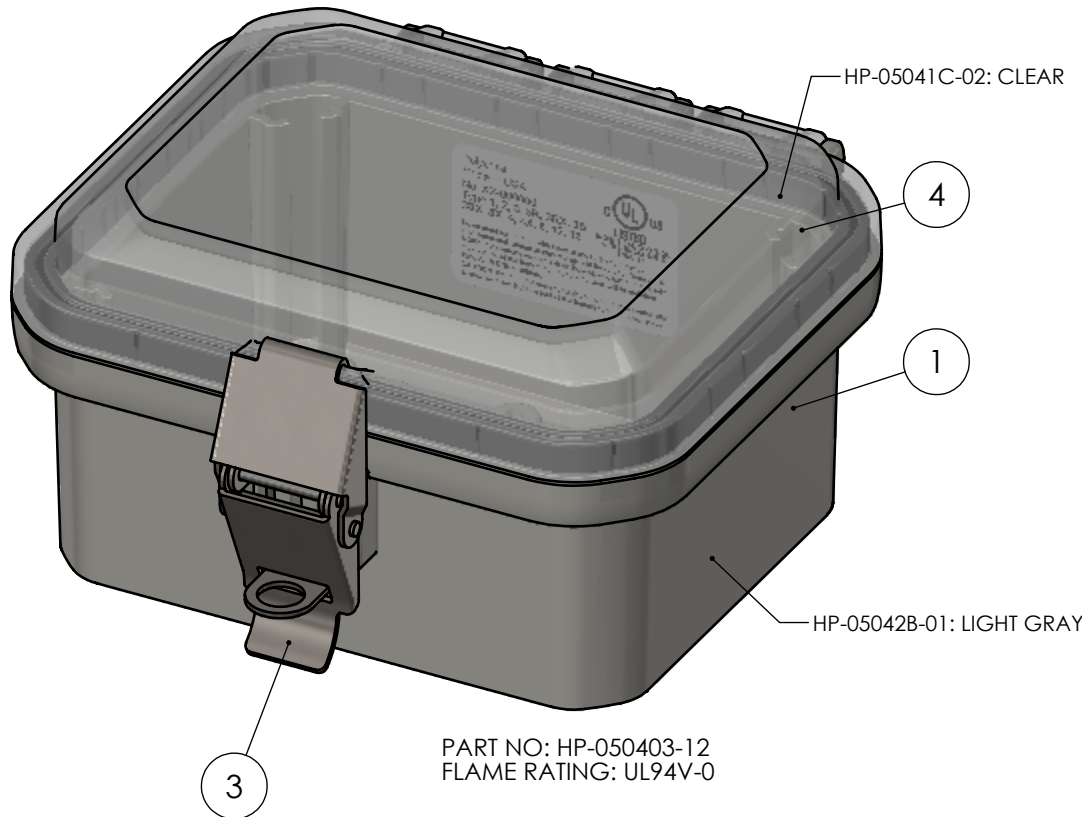
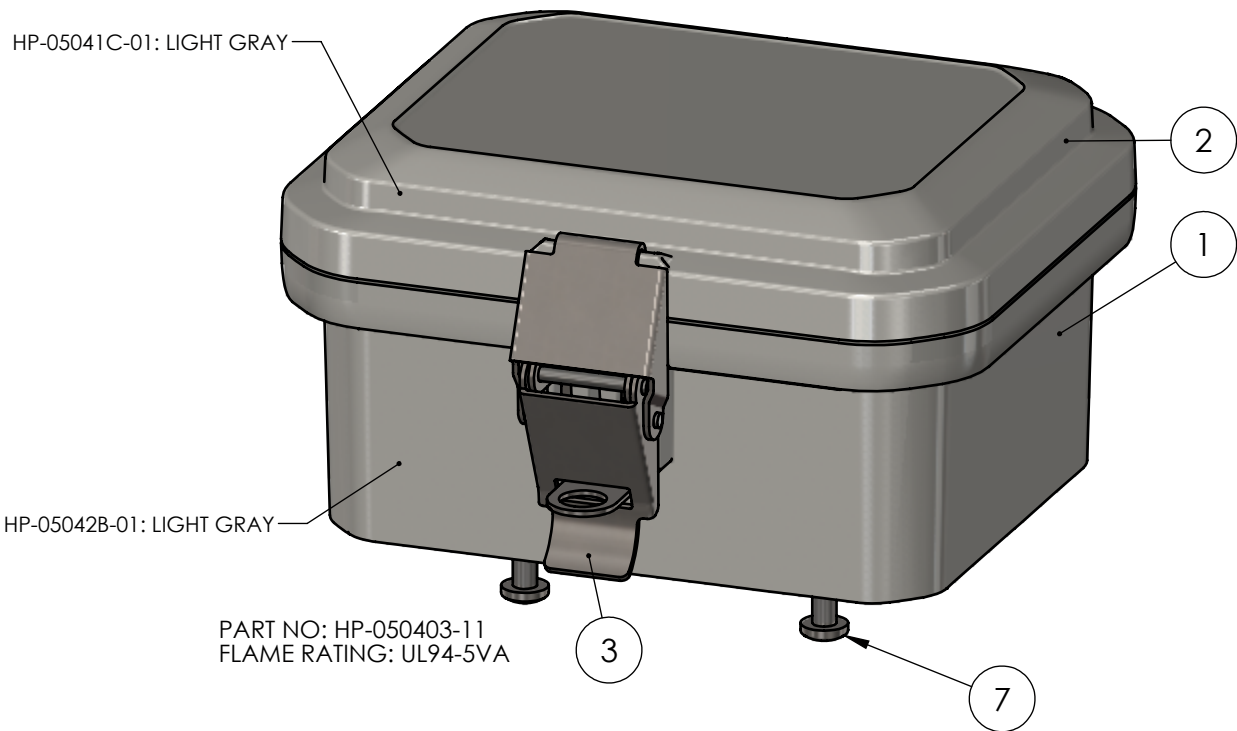
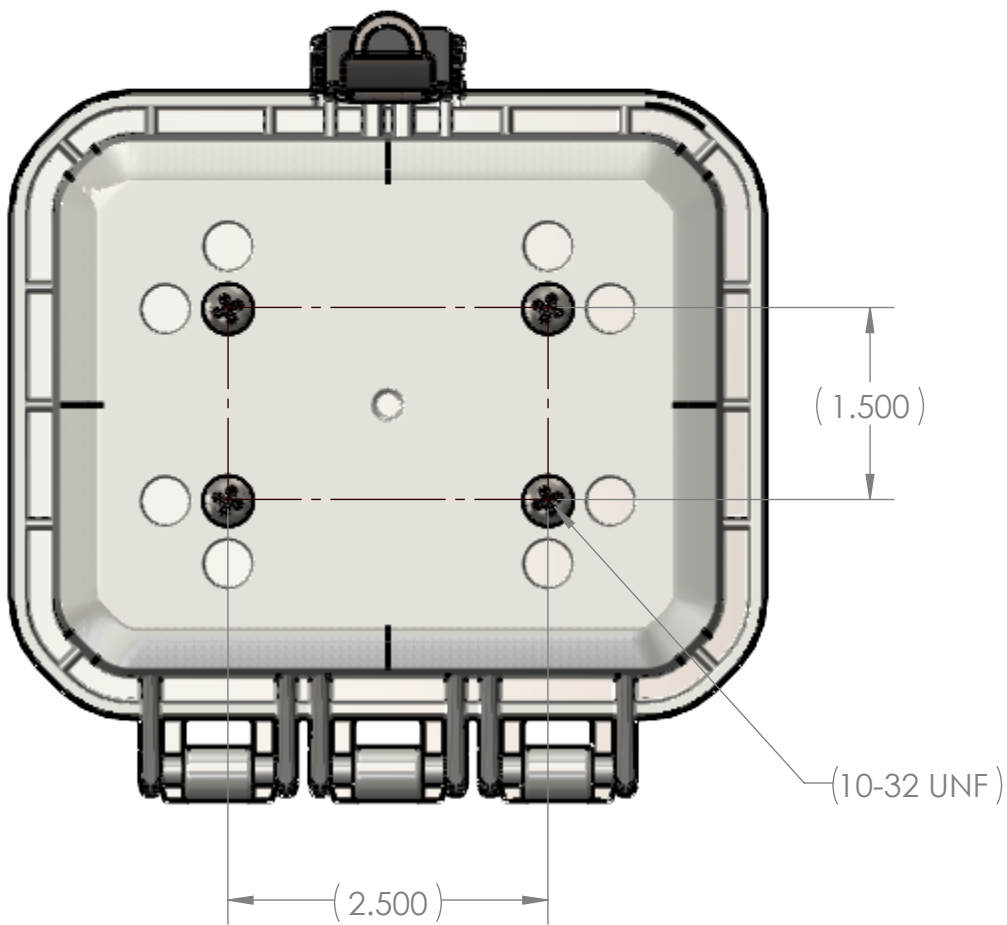
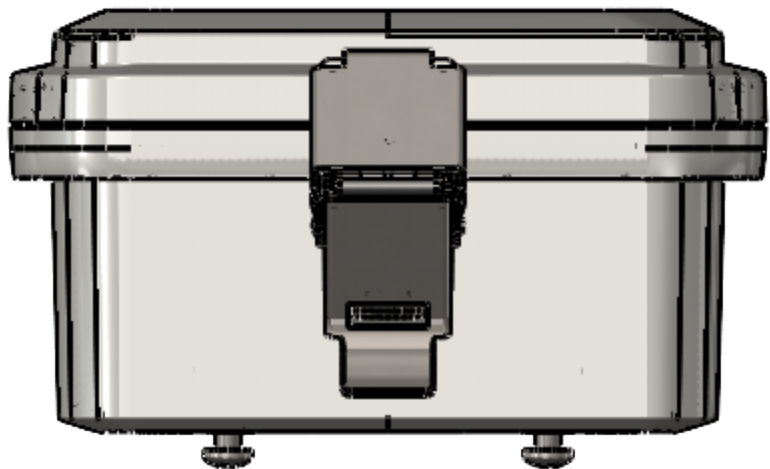
D

C

B

A

BOM Table								
ITEM NO.	PART NUMBER	Rev.	Description	Material	HP-050403-11/QTY.	HP-050403-12/QTY.	HP-050403-13/QTY.	HP-050403-14/QTY.
1	HP-05042BI-01	0	HINGED BASE W/INSERTS		1	1	-	-
2	HP-05041CG-01	0	HINGED COVER W/GASKET		1	-	-	-
3	ZH-01L	0	LATCH ASSEMBLY	304SS	1	1	1	1
4	HP-05041CG-02	0	HINGED COVER W/GASKET		-	1	-	1
5	HP-05041CG-00	0	HINGED COVER W/GASKET		-	-	1	-
6	HP-05042BI-00	0	HINGED BASE W/INSERTS		-	-	1	1
7	SCREWS-049	0	10-32 X 3/8 PHILIPS, PAN, SST	SST	4	4	4	4



UNLESS OTHERWISE SPECIFIED: DIMENSIONS ARE IN: INCHES[mm] TOLERANCES: ANGULAR: ±2° TWO PLACE DECIMAL: ±.010 THREE PLACE DECIMAL: ±.005 PRINTED GRAPHICS: ±.010				PART NO. AS NOTED		MATERIAL		FLAME RATING		SIZE C	HINGED ENCLOSURE		REV 0
PROPRIETARY AND CONFIDENTIAL THE INFORMATION CONTAINED IN THIS DRAWING IS THE SOLE PROPERTY OF POLYCASE. ANY REPRODUCTION IN PART OR AS A WHOLE WITHOUT THE WRITTEN PERMISSION OF POLYCASE IS PROHIBITED. CAD FILE: HP-050403				DRAWN CHECKED	NAME D.M.F. B.M.B.	DATE 8/1/2023 8/1/2023	SCALE: 1:1.5		SHEET 2 OF 3				

REV.	DESCRIPTION	ZONE	BY	APPR'D	DATE
REVISIONS					



