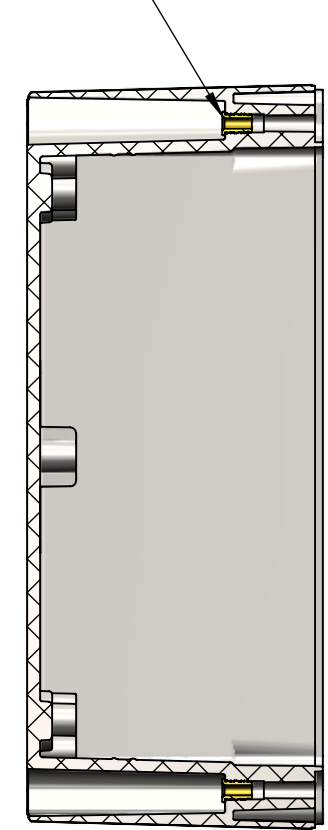
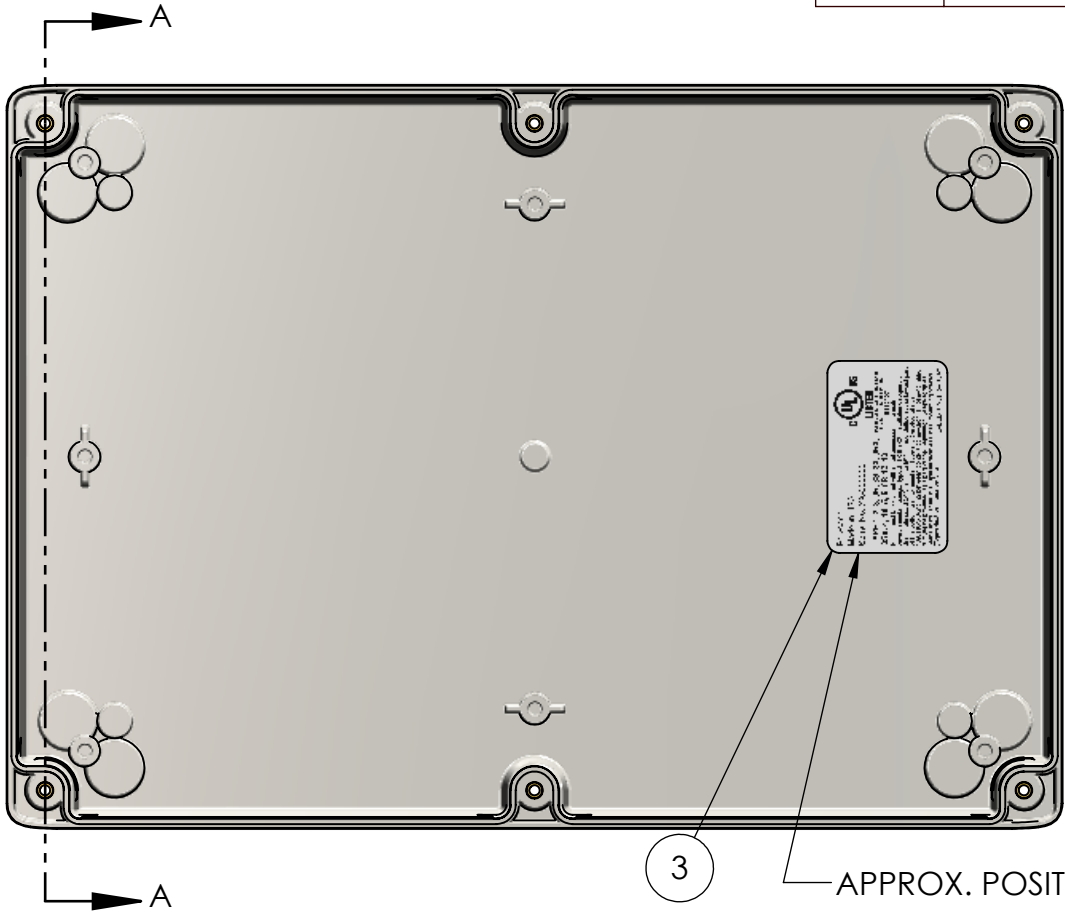


BOM Table								
ITEM NO.	PART NUMBER	Rev.	Description	Material	FlameRating	Color	HN-88BP-01/QTY.	HN-88BP-00/QTY.
1	HN-88BPN-00	2	BASE	PC	UL94-5VA	BLACK	-	1
2	INSERTS-3	0	THREADED INSERT #6-32	BRASS			6	6
3	LABEL-107-01	0	UL LABEL				1	1
4	HN-88BPN-01	2	BASE	PC	UL94-5VA	LIGHT GRAY	1	-

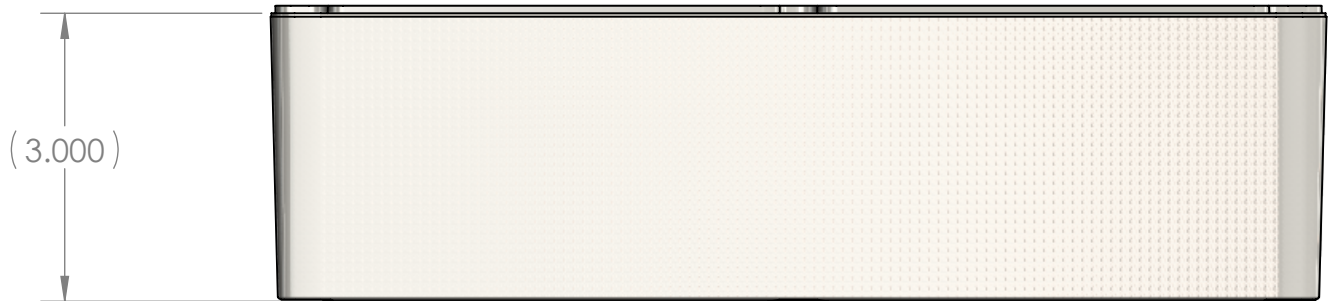
INSERTS TO BE FULLY PRESSED AS SHOWN



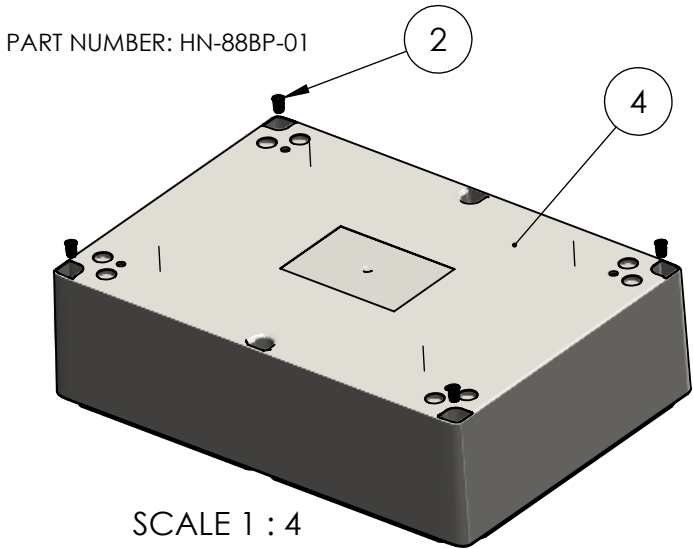
SECTION A-A



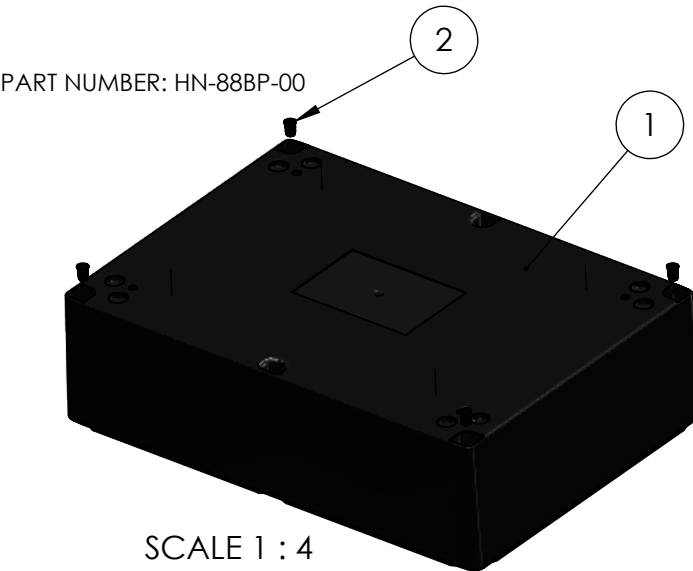
APPROX. POSITION



(3.000)



SCALE 1 : 4



SCALE 1 : 4

1	REVISED BASE AND LABEL		Douglas French	12/29/2025
0			Douglas French	7/24/2025
REV.	COMMENT	ZONE	REVISED BY	CREATION DATE
REVISIONS				

UNLESS OTHERWISE SPECIFIED:
DIMENSIONS ARE IN: INCHES [mm]
TOLERANCES: ANGULAR: ±2°
TWO PLACE DECIMAL: ±.010
THREE PLACE DECIMAL: ±.005
PRINTED GRAPHICS: ±.010
PROPRIETARY AND CONFIDENTIAL
THE INFORMATION CONTAINED IN THIS
DRAWING IS THE SOLE PROPERTY OF
POLYCASE. ANY REPRODUCTION IN PART
OR AS A WHOLE WITHOUT THE WRITTEN
PERMISSION OF POLYCASE IS PROHIBITED.
CAD FILE: HN-88BP

PART NO. AS NOTED		
MATERIAL		
FLAME RATING		
-		
DRAWN	NAME	DATE
CHECKED	B.M.B.	12/29/2025

1305 CHESTER IND. PARKWAY AVON, OHIO 44011-1083 U.S.A.
PH#: 1-800-248-1233, 440-934-0444 FAX#: 440-934-0088

BASE W/BRASS INSERTS		REV 1
SCALE: 1:2		SHEET 1 OF 1