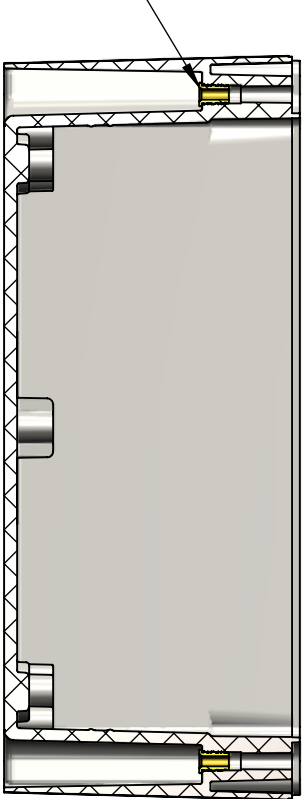
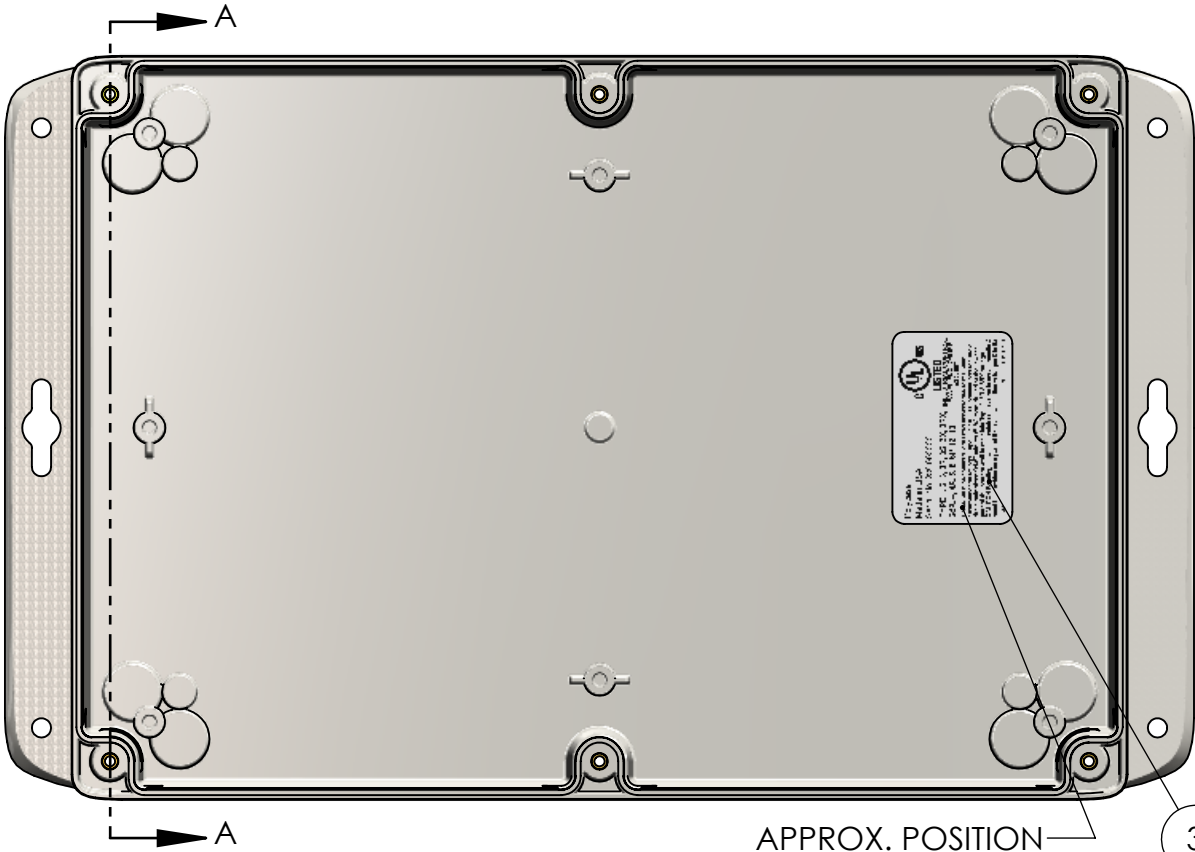


BOM Table								
ITEM NO.	PART NUMBER	Rev.	Description	Material	FlameRating	Color	HN-88BF-01/QTY.	HN-88BF-00/QTY.
1	HN-88BFN-00	2	BASE W/FLANGES	PC	UL94-5VA	BLACK	-	1
2	INSERTS-3	0	THREADED INSERT #6-32	BRASS			6	6
3	LABEL-100-01	1	UL LABEL				1	1
4	HN-88BFN-01	2	BASE W/FLANGES	PC	UL94-5VA	LIGHT GRAY	1	-

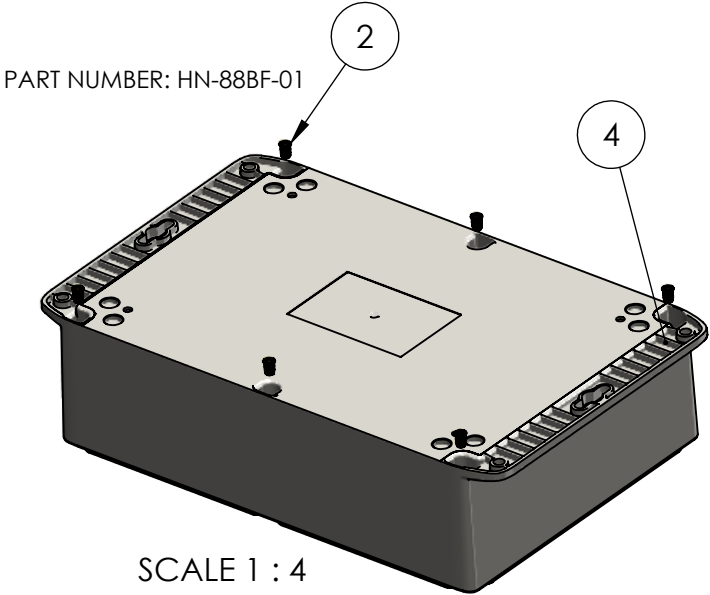
INSERTS TO BE FULLY PRESSED AS SHOWN



SECTION A-A

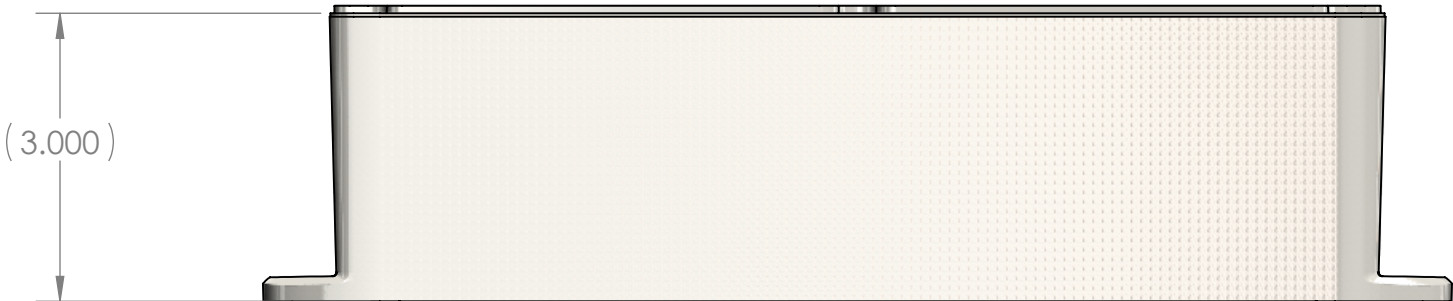


APPROX. POSITION

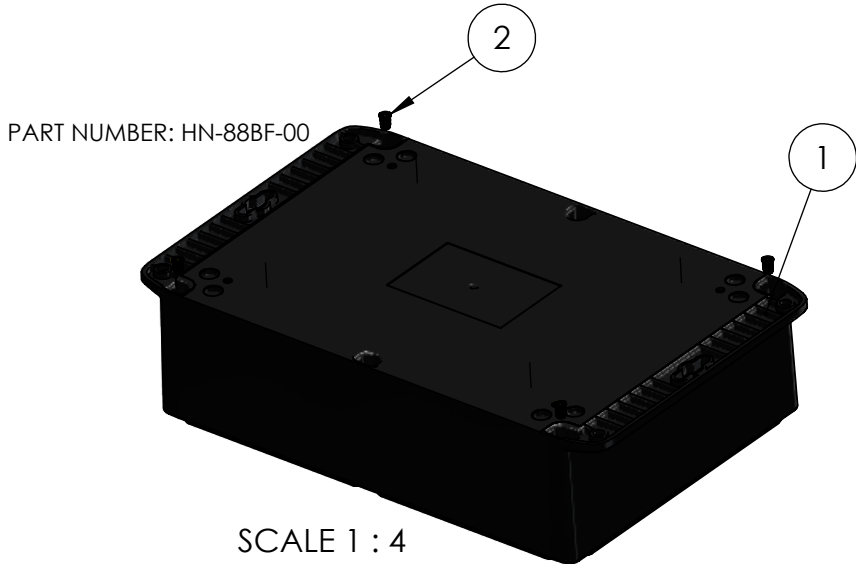


PART NUMBER: HN-88BF-01

SCALE 1 : 4



(3.000)




PART NUMBER: HN-88BF-00

SCALE 1 : 4

1	REVISED BASE AND LABEL		Douglas French	12/29/2025
0			Douglas French	7/24/2025
REV.	COMMENT	ZONE	REVISED BY	CREATION DATE
REVISIONS				

UNLESS OTHERWISE SPECIFIED:
DIMENSIONS ARE IN: INCHES [mm]
TOLERANCES: ANGULAR: $\pm 2^{\circ}$
TWO PLACE DECIMAL: $\pm .010$
THREE PLACE DECIMAL: $\pm .005$
PRINTED GRAPHICS: $\pm .010$
PROPRIETARY AND CONFIDENTIAL
THE INFORMATION CONTAINED IN THIS
DRAWING IS THE SOLE PROPERTY OF
POLYCASE. ANY REPRODUCTION IN PART
OR AS A WHOLE WITHOUT THE WRITTEN
PERMISSION OF POLYCASE IS PROHIBITED.
CAD FILE: HN-88BF

PART NO. AS NOTED		
MATERIAL		
FLAME RATING		
-		
DRAWN	NAME	DATE
CHECKED	B.M.B.	12/29/2025



1305 CHESTER IND. PARKWAY AVON, OHIO 44011-1083 U.S.A.
PH#: 1-800-248-1233, 440-934-0444 FAX#: 440-934-0088

BASE W/BRASS INSERTS		REV 1
SCALE: 1:2		SHEET 1 OF 1