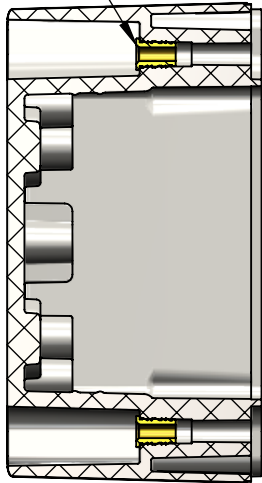
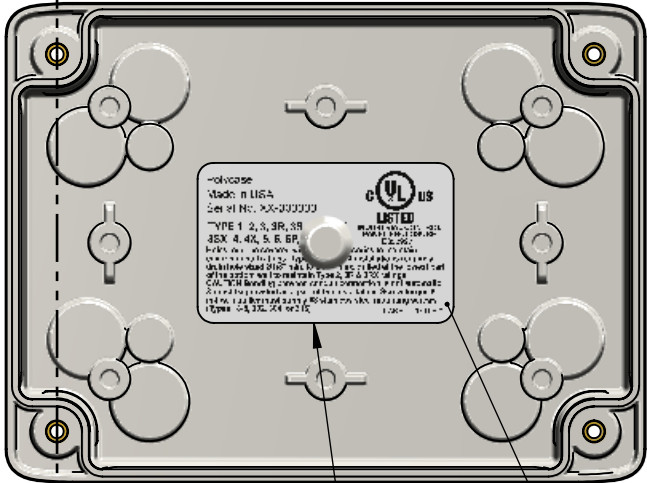


BOM Table								
ITEM NO.	PART NUMBER	Rev.	Description	Material	FlameRating	Color	HN-45BP-01/QTY.	HN-45BP-00/QTY.
1	HN-45BPN-00	2	BASE	PC	UL94-5VA	BLACK	-	1
2	INSERTS-3	0	THREADED INSERT #6-32	BRASS			4	4
3	LABEL-107	0	UL LABEL				1	1
4	HN-45BPN-01	2	BASE	PC	UL94-5VA	LIGHT GRAY	1	-

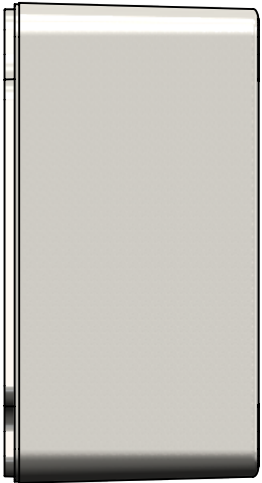
INSERTS TO BE FULLY PRESSED AS SHOWN



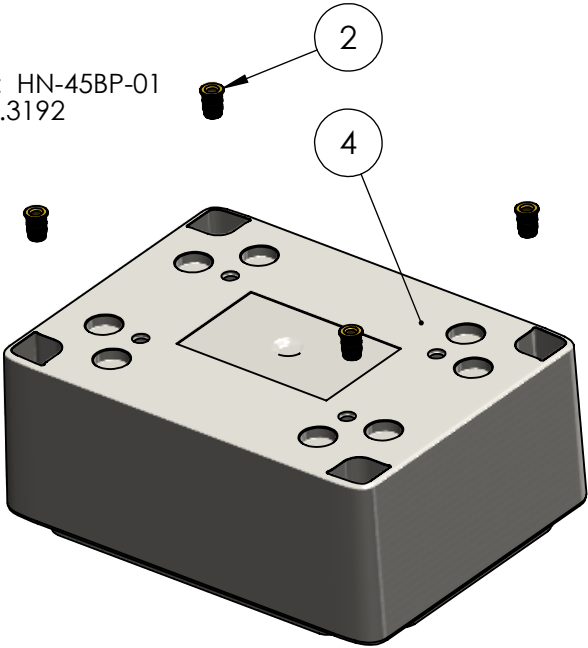
SECTION A-A



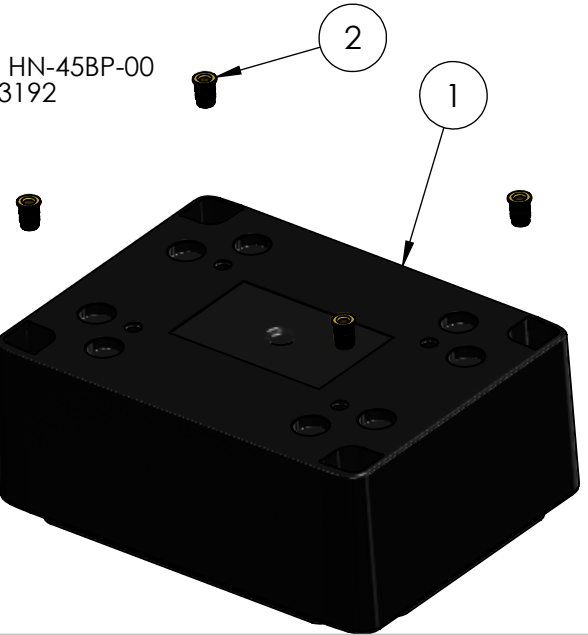
APPROX. POSITION



PART NUMBER: HN-45BP-01
WEIGHT(lbs): 0.3192



PART NUMBER: HN-45BP-00
WEIGHT(lbs): 0.3192



(1.906)

2	REVISED LABEL		Douglas French	12/29/2025
1	REVISED BASE		Douglas French	12/29/2025
0			Douglas French	2/27/2025
REV.	COMMENT	ZONE	REVISED BY	CREATION DATE
REVISIONS				

UNLESS OTHERWISE SPECIFIED:
DIMENSIONS ARE IN: INCHES [mm]
TOLERANCES: ANGULAR: $\pm 2^{\circ}$
TWO PLACE DECIMAL: $\pm .010$
THREE PLACE DECIMAL: $\pm .005$
PRINTED GRAPHICS: $\pm .010$
PROPRIETARY AND CONFIDENTIAL
THE INFORMATION CONTAINED IN THIS
DRAWING IS THE SOLE PROPERTY OF
POLYCASE. ANY REPRODUCTION IN PART
OR AS A WHOLE WITHOUT THE WRITTEN
PERMISSION OF POLYCASE IS PROHIBITED.
CAD FILE: HN-45BP

PART NO. AS NOTED		
MATERIAL		
FLAME RATING		
-		
DRAWN	NAME	DATE
CHECKED	D.M.F.	
	B.M.B.	

polycase		1305 CHESTER IND. PARKWAY AVON, OHIO 44011-1083 U.S.A. PH#: 1-800-248-1233, 440-934-0444 FAX#: 440-934-0088	
SIZE B		BASE W/BRASS INSERTS	REV 2
SCALE: 1:1.5		SHEET 1 OF 1	