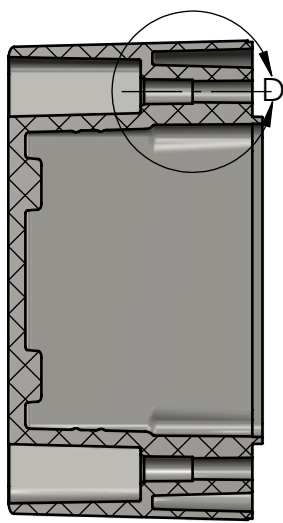


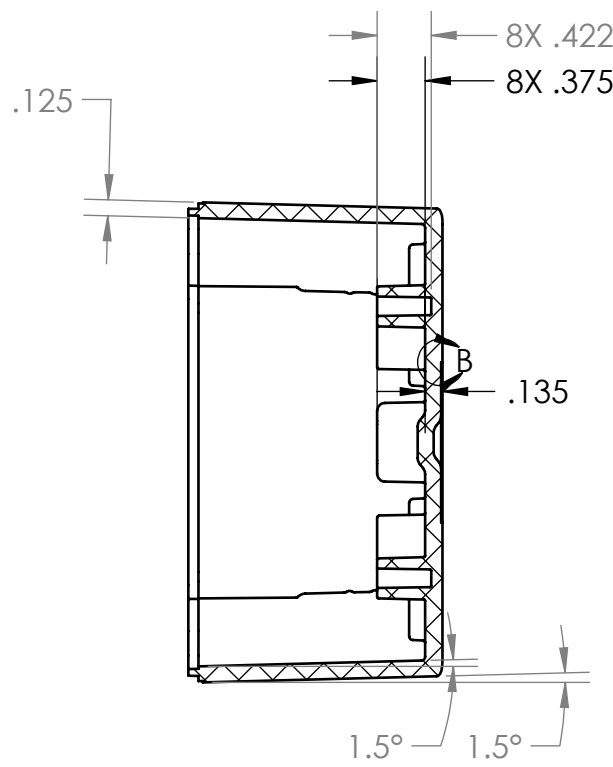
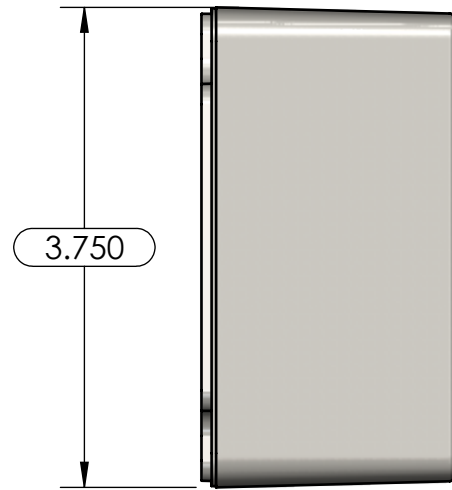
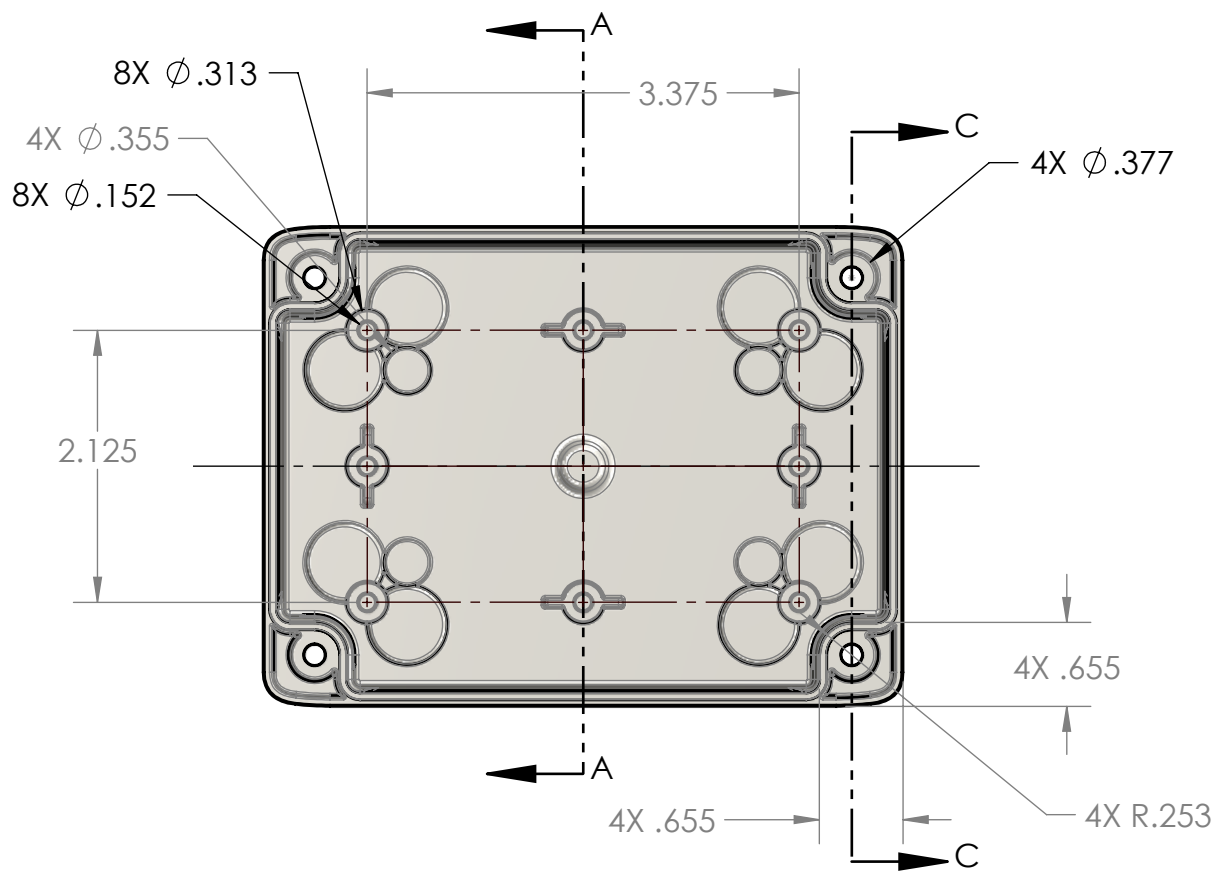
TOLERANCE CHART																
DIMENSION RANGE	0	.039	.118	.236	.394	.591	.866	1.181	1.575	2.087	2.756	3.543	4.724	6.299	7.874	9.843
	.039	.118	.236	.394	.591	.866	1.181	1.575	2.087	2.756	3.543	4.724	6.299	7.874	9.843	12.402
TOOL DEPENDENT	±.007	±.007	±.008	±.008	±.009	±.010	±.011	±.012	±.013	±.015	±.017	±.020	±.024	±.028	±.035	.043
NON-TOOL DEPENDENT	±.003	±.004	±.004	±.004	±.005	±.006	±.007	±.008	±.009	±.011	±.013	±.016	±.020	±.024	±.031	.039

F
E
D
C
B
A

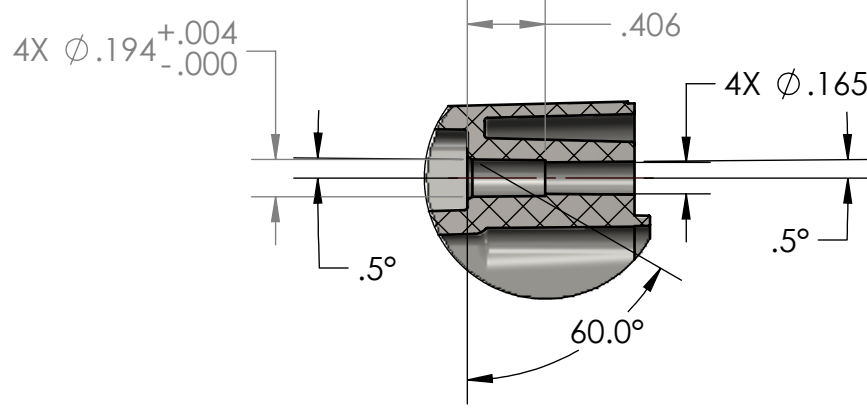
F
E
D
C
B
A



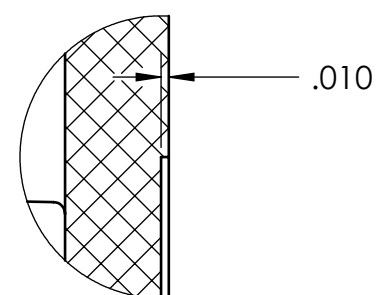
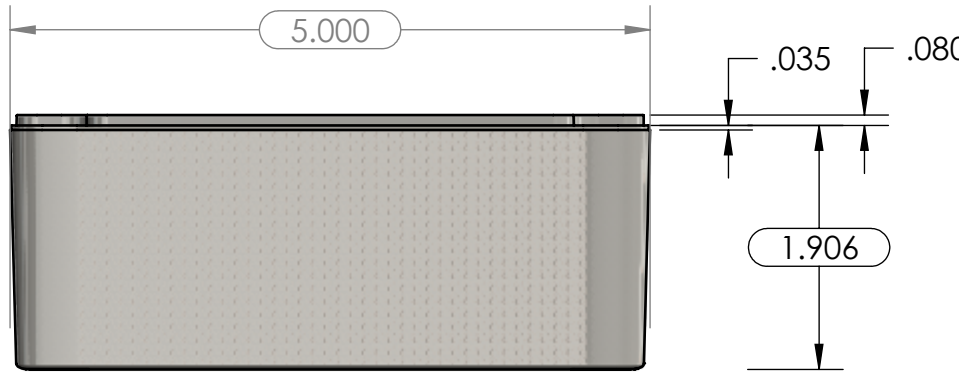
SECTION C-C



SECTION A-A

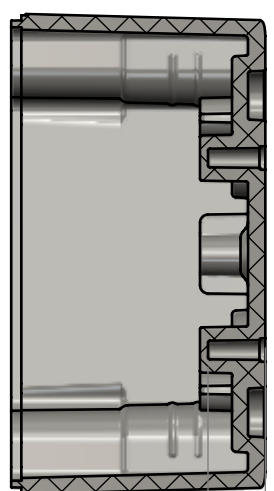
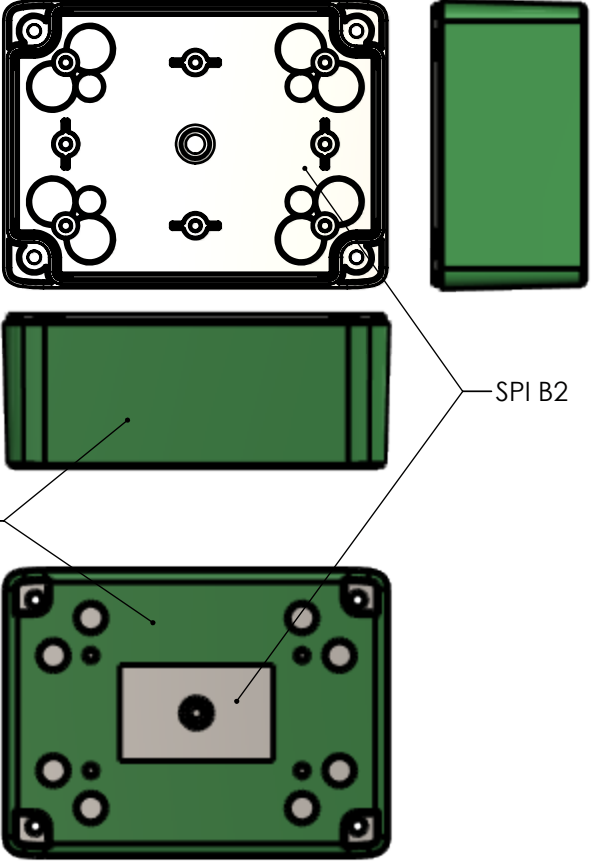


DETAIL D
SCALE 1 : 1

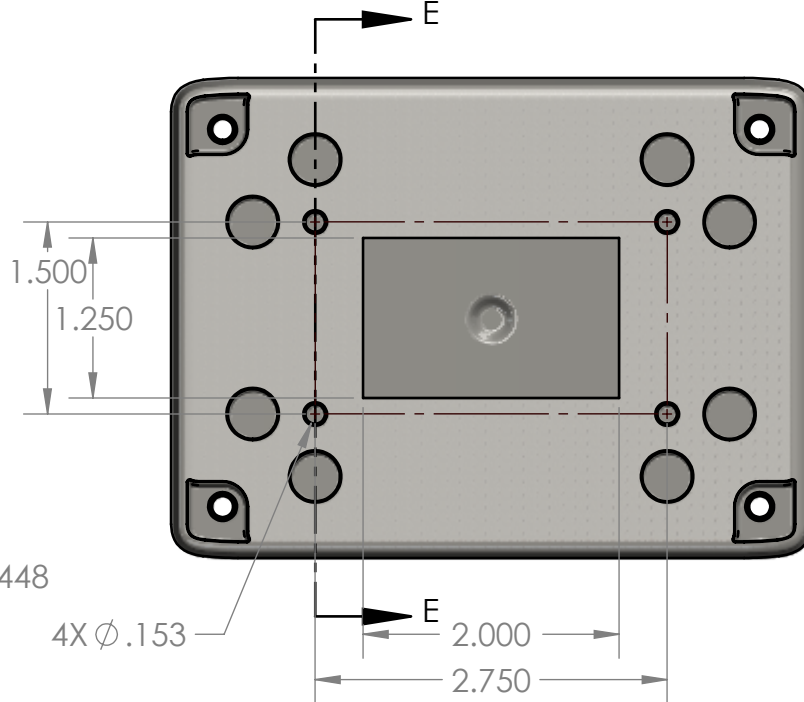


DETAIL B
SCALE 4 : 1

FINISH

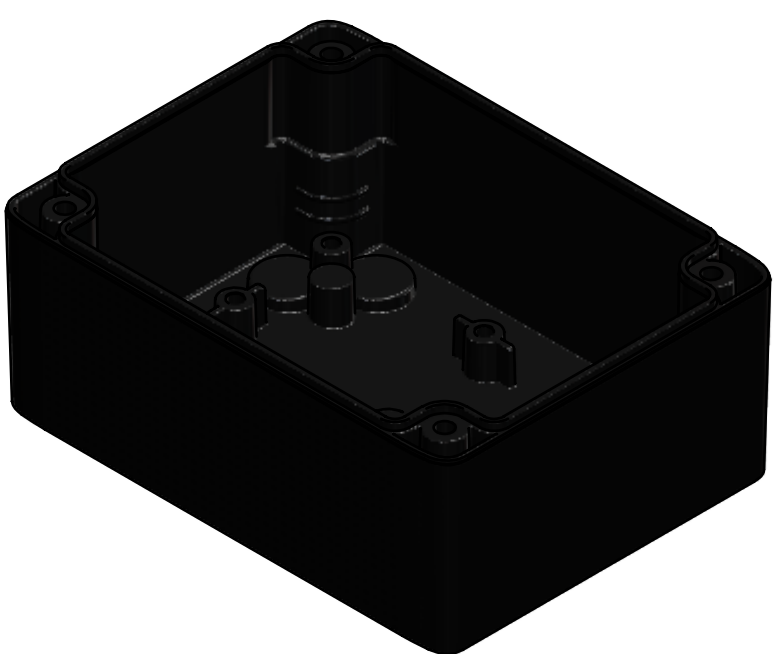
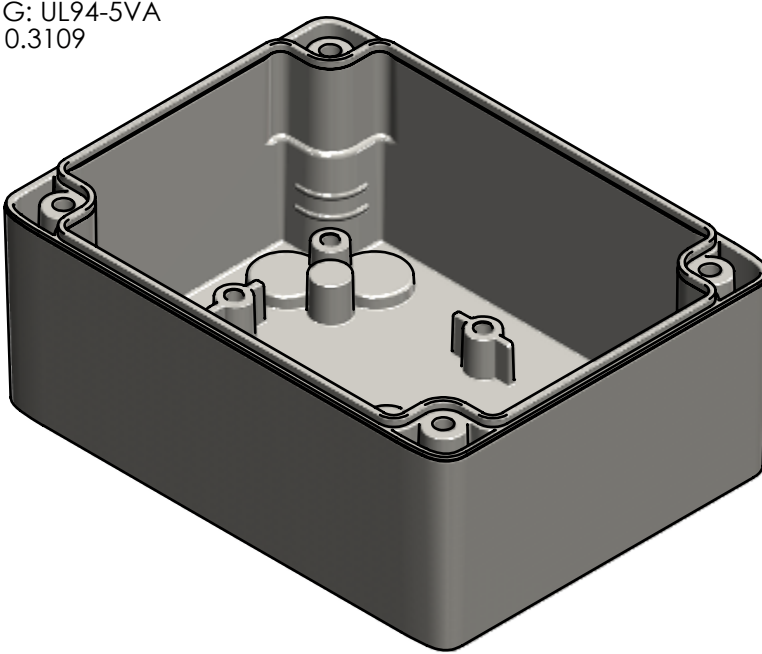


SECTION E-E



PART NUMBER: HN-45BPN-01
MATERIAL: PC
MATERIAL SPEC: /PC/XXX/GY
COLOR: LIGHT GRAY
FLAME RATING: UL94-5VA
WEIGHT(lbs): 0.3109

PART NUMBER: HN-45BPN-00
MATERIAL: PC
MATERIAL SPEC: /PC/XXX/BK
COLOR: BLACK
FLAME RATING: UL94-5VA
WEIGHT(lbs): 0.3109



- NOTES:
1. REFER TO SOLID MODEL FOR COMPLETE PART DEFINITION.
2. (INSPECTION DIMENSION)
3. EJECTOR PINS TO BE FLUSH ±.015
4. FLASH .005 MAX
5. MAX REGRIND: 20%
6. GATE MUST BE FLUSH OR BELOW ADJACENT SURFACE

REV.	COMMENT	ZONE	REVISED BY	CREATION DATE	UNLESS OTHERWISE SPECIFIED: DIMENSIONS ARE IN: INCHES[mm] TOLERANCES: ANGULAR: ±2° TWO PLACE DECIMAL: ±- THREE PLACE DECIMAL: ±- PRINTED GRAPHICS: ±- PROPRIETARY AND CONFIDENTIAL THE INFORMATION CONTAINED IN THIS DRAWING IS THE SOLE PROPERTY OF POLYCASE. ANY REPRODUCTION IN PART OR AS A WHOLE WITHOUT THE WRITTEN PERMISSION OF POLYCASE IS PROHIBITED. CAD FILE: HN-45BPN	PART NO. AS NOTED MATERIAL PC	FLAME RATING UL94-5VA	SIZE C	SCALE: 1:1.5	BASE	REV 2	SHEET 1 OF 1
2	revised gate		Douglas French	11/12/2025								
1	HEIGHT 1.906 WAS 1.875		Douglas French	4/2/2025								
0			Douglas French	2/27/2025								
REVISIONS					DRAWN CHECKED		NAME D.M.F. B.M.B.	DATE 11/12/2025 11/12/2025				