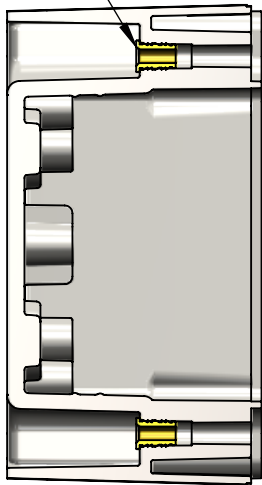
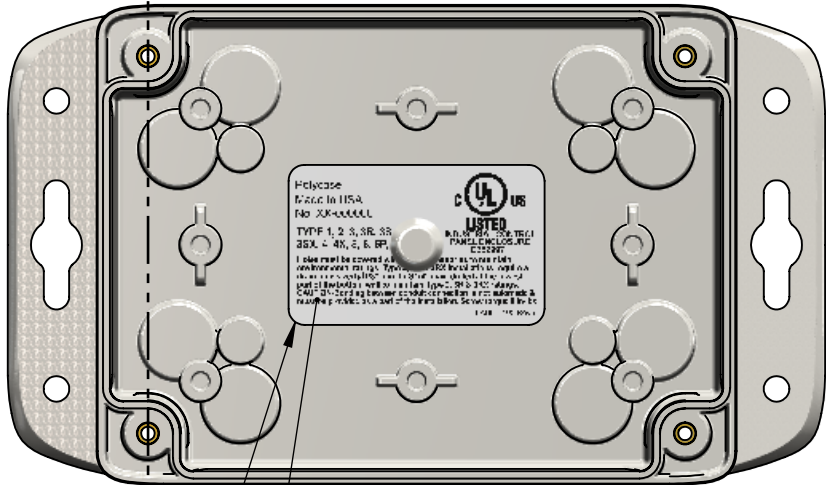


BOM Table									
ITEM NO.	PART NUMBER	Rev.	Description	Material	FlameRating	Color	HN-45BF-01/QTY.	HN-45BF-00/QTY.	
1	HN-45BFN-00	2	BASE W/FLANGES	PC	UL94-5VA	BLACK	-	1	
2	INSERTS-3	0	THREADED INSERT #6-32	BRASS			4	4	
3	LABEL-100	0	UL LABEL				1	1	
4	HN-45BFN-01	2	BASE W/FLANGES	PC	UL94-5VA	LIGHT GRAY	1	-	

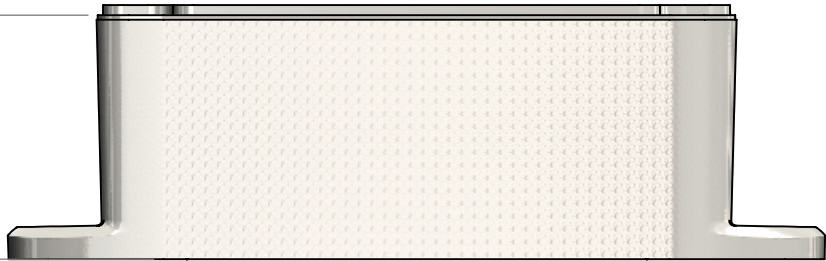
INSERTS TO BE FULLY PRESSED AS SHOWN



SECTION A-A

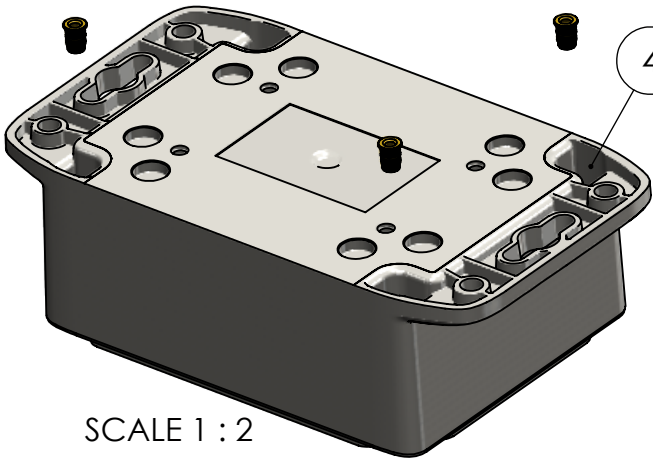


APPROX. POSITION

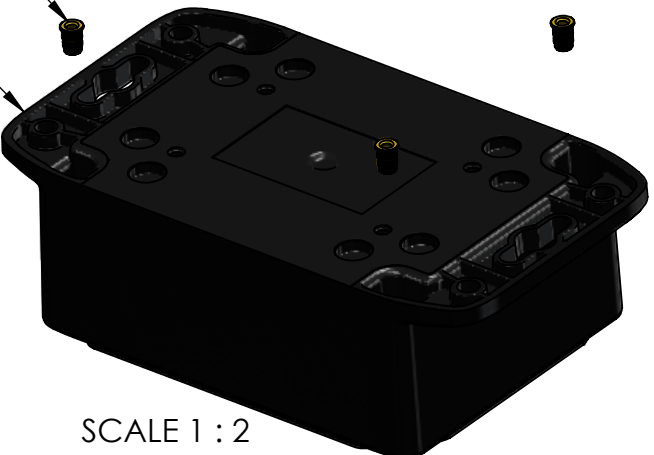


(1.906)

PART NUMBER: HN-45BF-01
WEIGHT(lbs): 0.3476




SCALE 1 : 2



SCALE 1 : 2

PART NUMBER: HN-45BF-00
WEIGHT(lbs): 0.3476

2	REVISED LABELS		Douglas French	12/29/2025
1	revised base		Douglas French	11/17/2025
0			Douglas French	2/27/2025
REV.	COMMENT	ZONE	REVISED BY	CREATION DATE
REVISIONS				

UNLESS OTHERWISE SPECIFIED: DIMENSIONS ARE IN: INCHES[mm] TOLERANCES: ANGULAR: ±2° TWO PLACE DECIMAL: ±.010 THREE PLACE DECIMAL: ±.005 PRINTED GRAPHICS: ±.010		PART NO. AS NOTED		<div>polycase</div> <div>1305 CHESTER IND. PARKWAY AVON, OHIO 44011-1083 U.S.A. PH#: 1-800-248-1233, 440-934-0444 FAX#: 440-934-0088</div>			
PROPRIETARY AND CONFIDENTIAL THE INFORMATION CONTAINED IN THIS DRAWING IS THE SOLE PROPERTY OF POLYCASE. ANY REPRODUCTION IN PART OR AS A WHOLE WITHOUT THE WRITTEN PERMISSION OF POLYCASE IS PROHIBITED. CAD FILE: HN-45BF		MATERIAL					
FLAME RATING		SIZE		BASE W/BRASS INSERTS		REV	
-		B				2	
		NAME		DATE			
DRAWN		D.M.F.		12/29/2025			
CHECKED		B.M.B.		12/29/2025			
SCALE: 1:1.5				SHEET 1 OF 1			