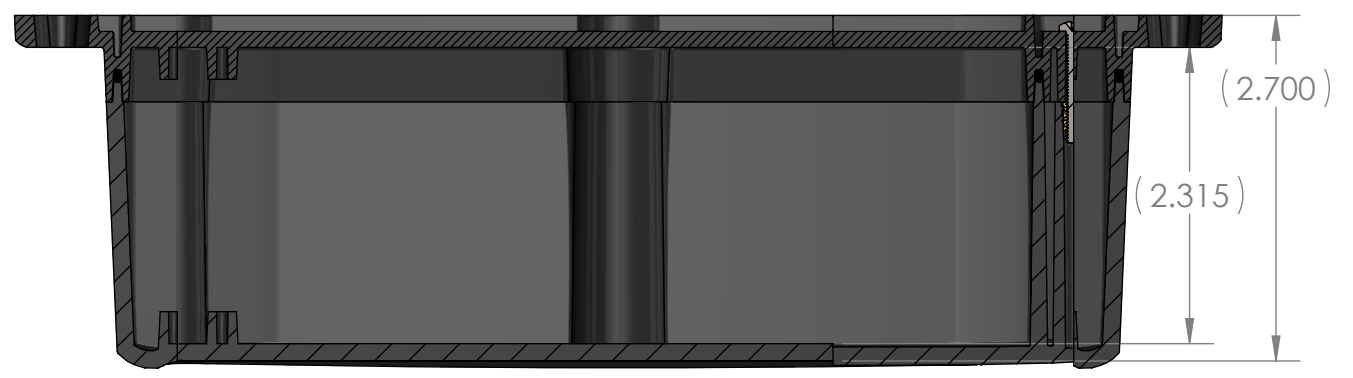
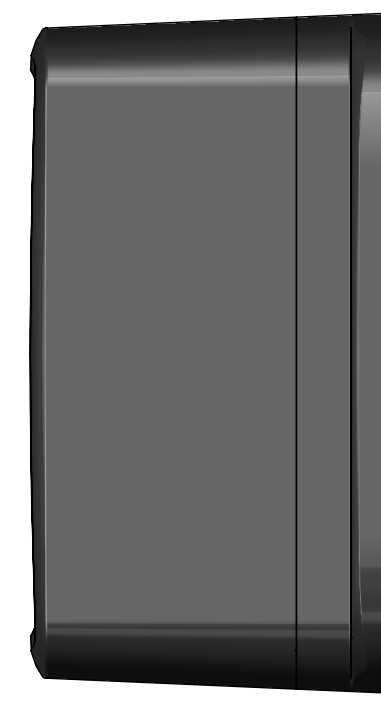
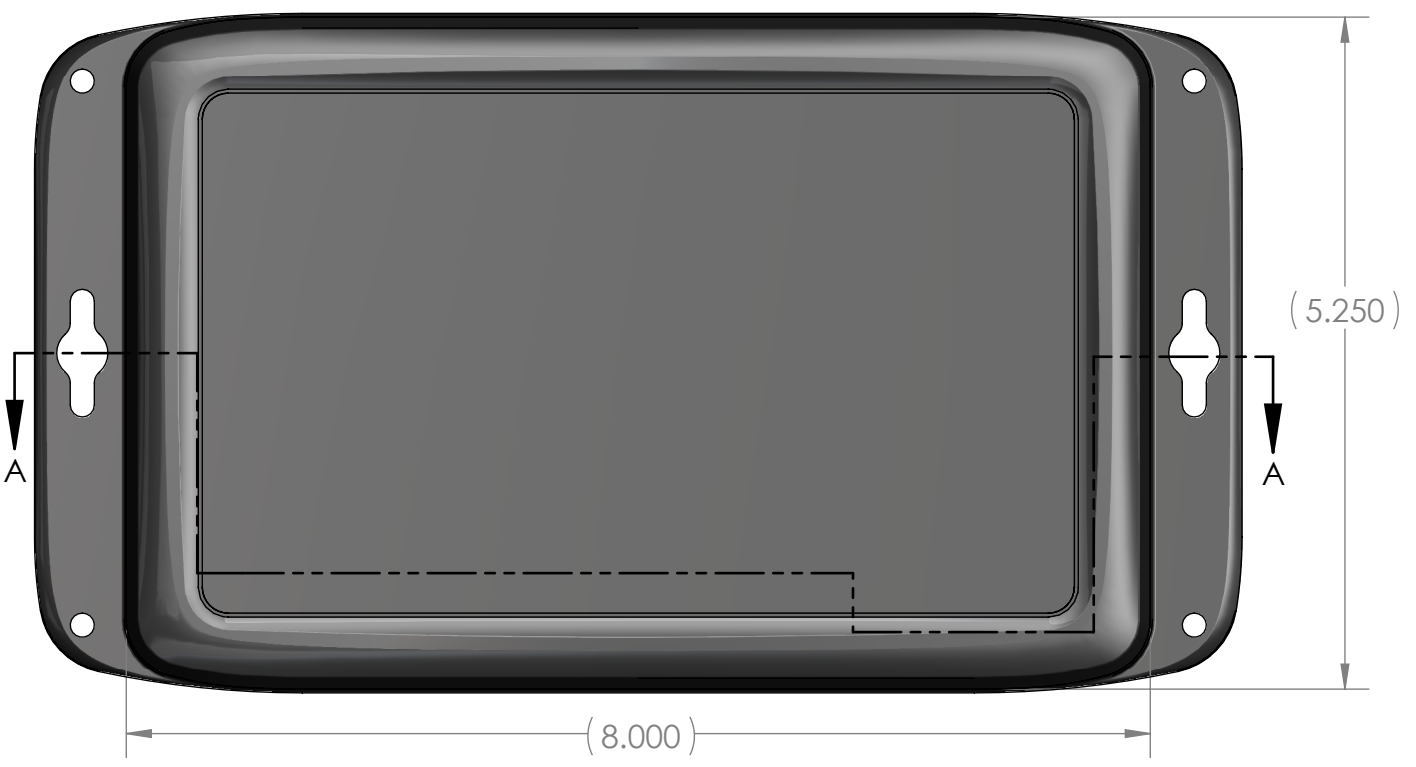


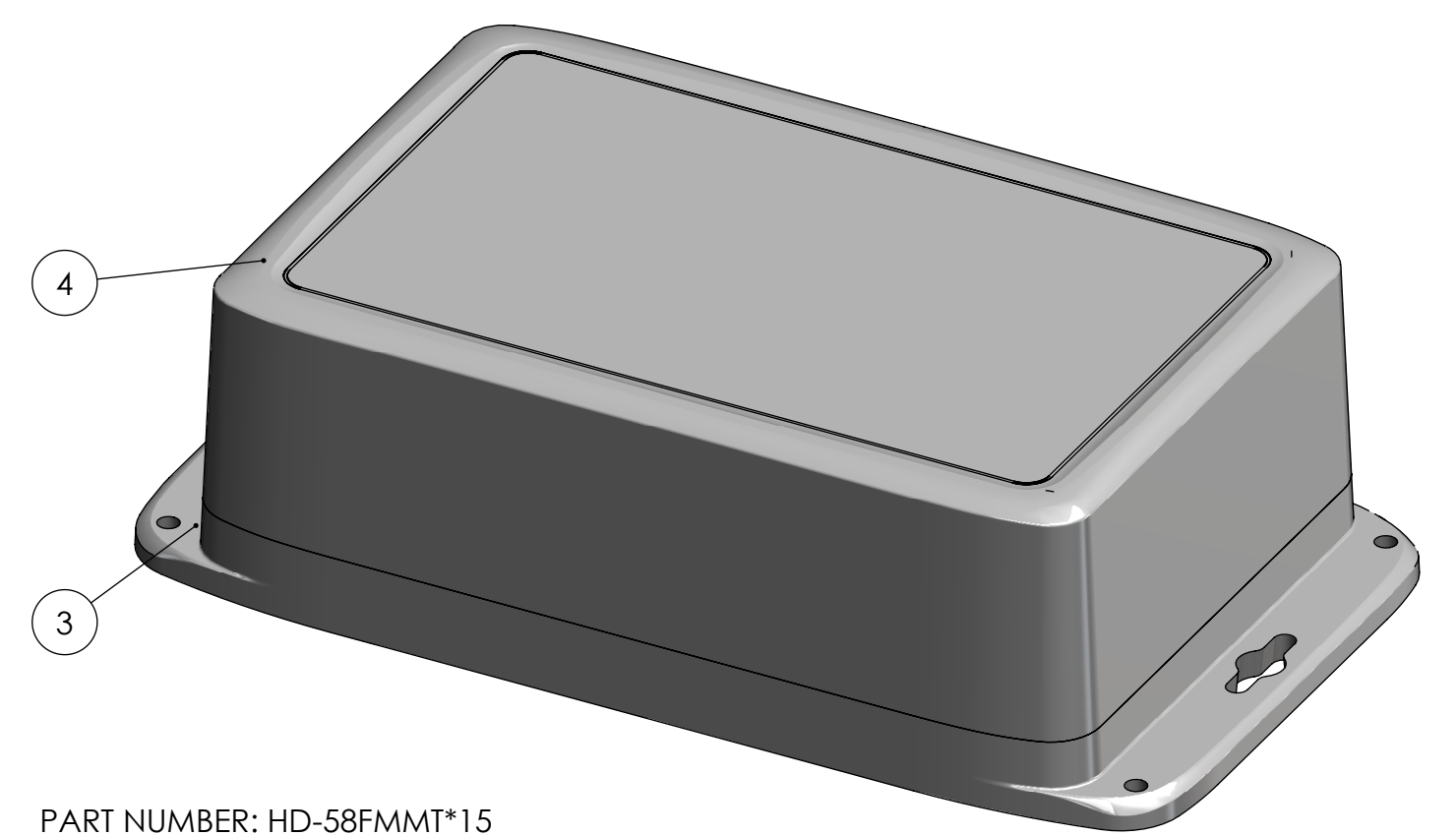
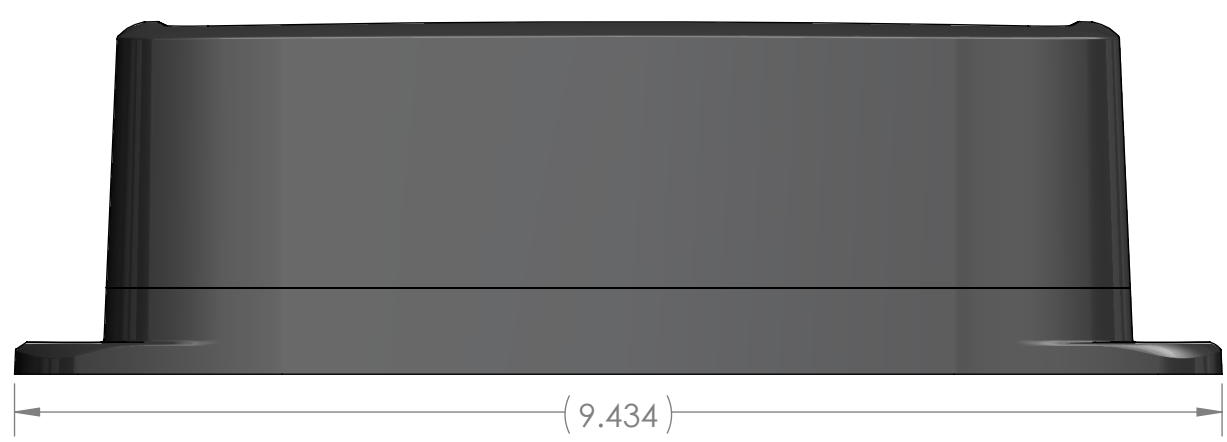
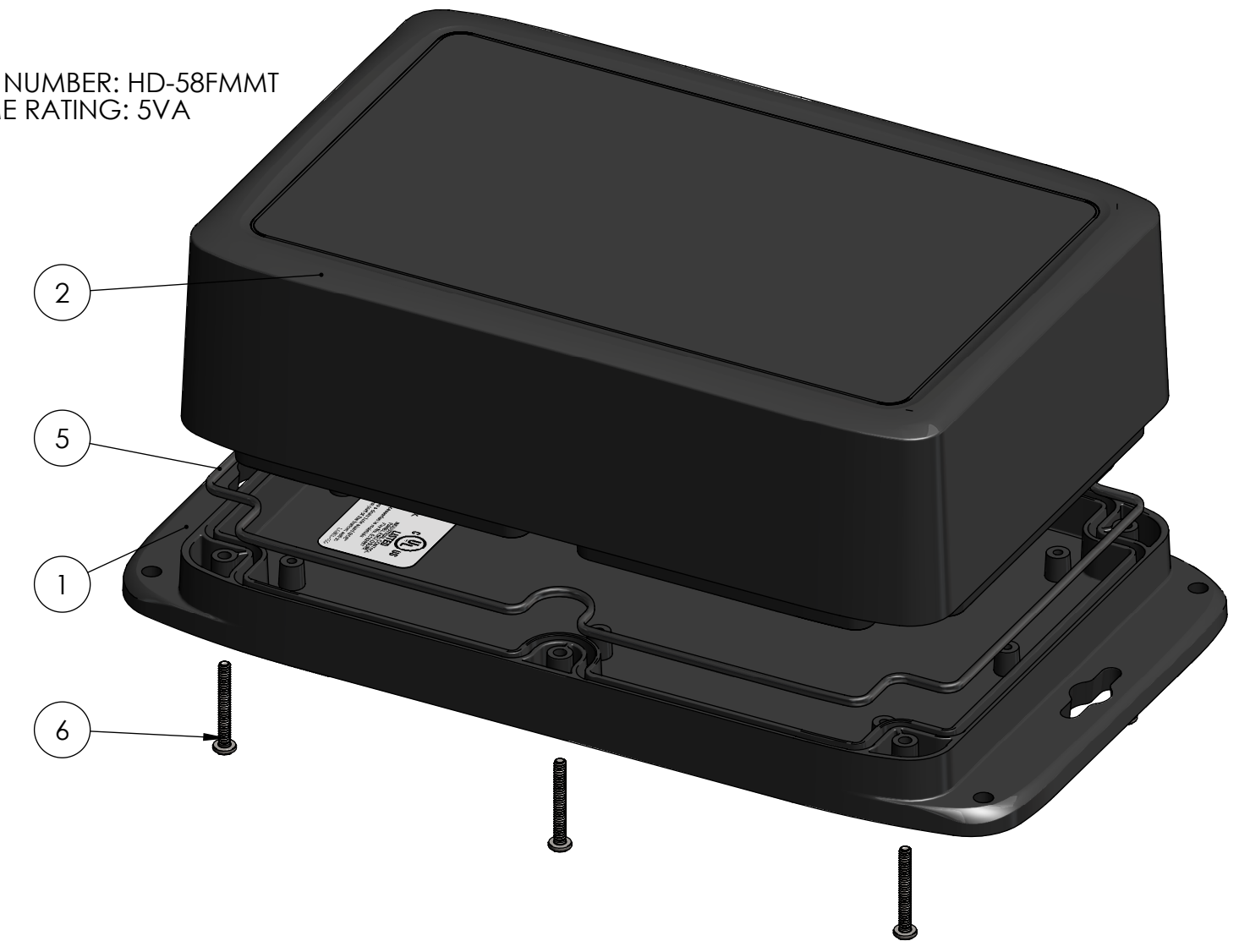
BOM Table							
ITEM NO.	PART NUMBER	Rev.	Description	Material	Color	HD-58FMMT/QTY.	HD-58FMMT*15/QTY.
1	HD-58BFMB	-	BASE, W/FLANGES & PCB BOSSES	PC	BLACK	1	-
2	HD-58CMBT	-	COVER W/BRASS INSERTS	PC	BLACK	1	-
3	HD-58BFMB*15	-	BASE, W/FLANGES & PCB BOSSES	PC	GRAY (RAL 7035)	-	1
4	HD-58CMBT*15	-	COVER W/BRASS INSERTS	PC	GRAY (RAL 7035)	-	1
5	GASKET-58*08	-	GASKET	SILICONE	TRANSPARENT	1	1
6	SCREWS-SS7/8-6	-	6 PACK: 4-40 X 7/8 LG PAN PHILLIPS SCREW, SST			1	1



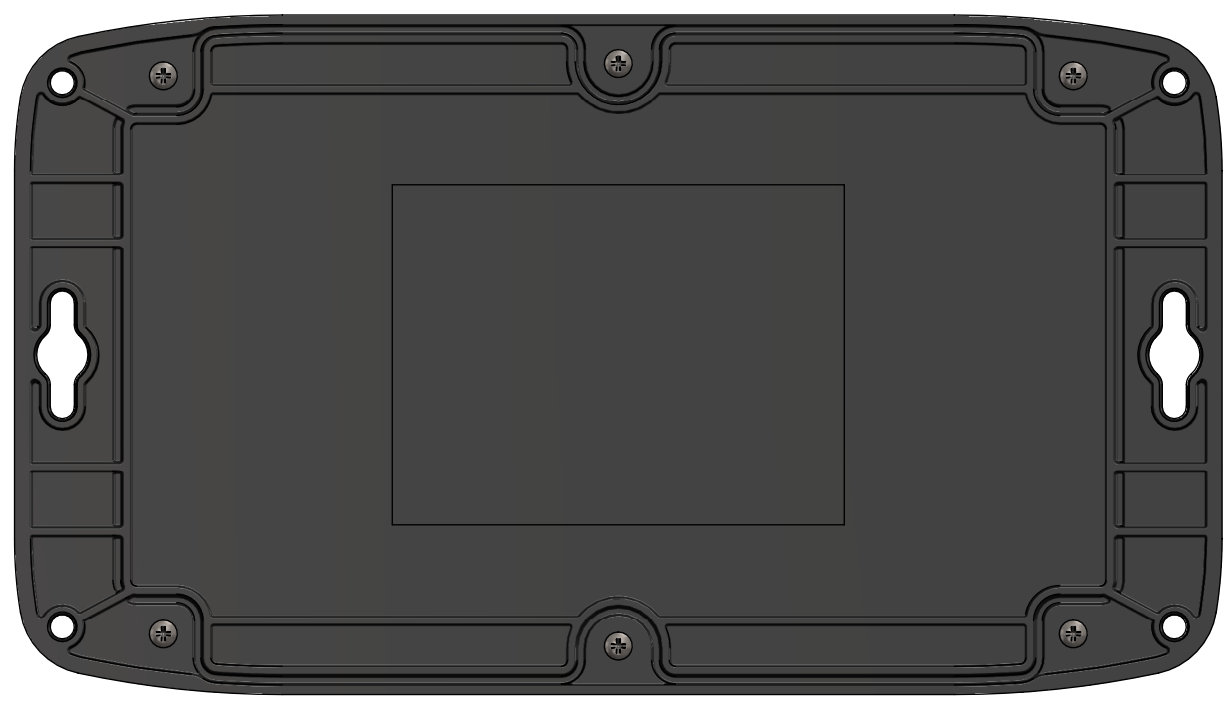
SECTION A-A



PART NUMBER: HD-58FMMT
FLAME RATING: 5VA



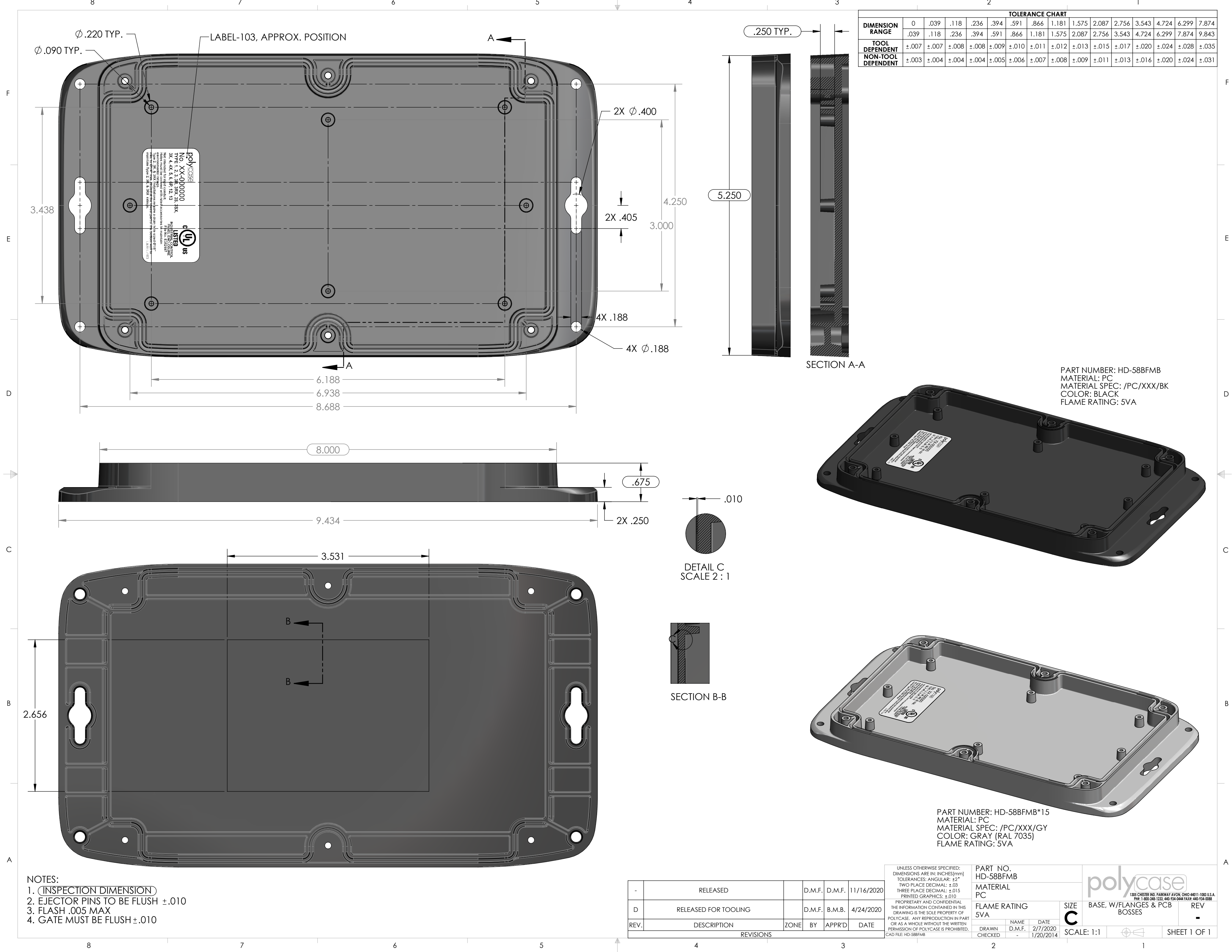
PART NUMBER: HD-58FMMT*15
FLAME RATING: 5VA



NOTES:
1. RECOMMENDED TORQUE SETTING FOR ASSEMBLY SCREWS: 6.25 IN-LBS

REV.	DESCRIPTION	ZONE	BY	APPR'D	DATE
-	RELEASED		D.M.F.	D.M.F.	11/16/2020
D	RELEASED FOR TOOLING		D.M.F.	B.M.B.	4/24/2020

UNLESS OTHERWISE SPECIFIED: DIMENSIONS ARE IN: INCHES[mm] TOLERANCES: ANGULAR: ±2° TWO PLACE DECIMAL: ±.030 THREE PLACE DECIMAL: ±.015 PRINTED GRAPHICS: ±.010		PART NO. HD-58FMMT		 <small>1305 CHESTER RD. PARKWAY AVON, OHIO 44011-1083 U.S.A. PH: 1-800-548-1233 440-934-0444 FAX: 440-934-0088</small>	
PROPRIETARY AND CONFIDENTIAL THE INFORMATION CONTAINED IN THIS DRAWING IS THE SOLE PROPERTY OF POLYCASE. ANY REPRODUCTION IN PART OR AS A WHOLE WITHOUT THE WRITTEN PERMISSION OF POLYCASE IS PROHIBITED. CAD FILE: HD-58FMMT		MATERIAL			
FLAME RATING 5VA		SIZE C	HD ASSEMBLY		REV -
DRAWN CHECKED		NAME D.M.F.	DATE 2/7/2020	SCALE: 1:1.5	
REVISIONS				SHEET 1 OF 1	



DIMENSION RANGE	TOLERANCE CHART														
	0	.039	.118	.236	.394	.591	.866	1.181	1.575	2.087	2.756	3.543	4.724	6.299	7.874
TOOL DEPENDENT	±.007	±.007	±.008	±.008	±.009	±.010	±.011	±.012	±.013	±.015	±.017	±.020	±.024	±.028	±.035
NON-TOOL DEPENDENT	±.003	±.004	±.004	±.004	±.005	±.006	±.007	±.008	±.009	±.011	±.013	±.016	±.020	±.024	±.031

PART NUMBER: HD-58BFMB
 MATERIAL: PC
 MATERIAL SPEC: /PC/XXX/BK
 COLOR: BLACK
 FLAME RATING: 5VA

PART NUMBER: HD-58BFMB*15
 MATERIAL: PC
 MATERIAL SPEC: /PC/XXX/GY
 COLOR: GRAY (RAL 7035)
 FLAME RATING: 5VA

REV.	DESCRIPTION	ZONE	BY	APPR'D	DATE
-	RELEASED		D.M.F.	D.M.F.	11/16/2020
D	RELEASED FOR TOOLING		D.M.F.	B.M.B.	4/24/2020

UNLESS OTHERWISE SPECIFIED: DIMENSIONS ARE IN: INCHES[mm] TOLERANCES: ANGULAR: ±2° TWO PLACE DECIMAL: ±.03 THREE PLACE DECIMAL: ±.015 PRINTED GRAPHICS: ±.010			PART NO. HD-58BFMB	
PROPRIETARY AND CONFIDENTIAL THE INFORMATION CONTAINED IN THIS DRAWING IS THE SOLE PROPERTY OF POLYCASE. ANY REPRODUCTION IN PART OR AS A WHOLE WITHOUT THE WRITTEN PERMISSION OF POLYCASE IS PROHIBITED. CAD FILE: HD-58BFMB			MATERIAL PC	
DRAWN CHECKED			NAME D.M.F.	
DATE 2/7/2020			DATE 1/20/2014	

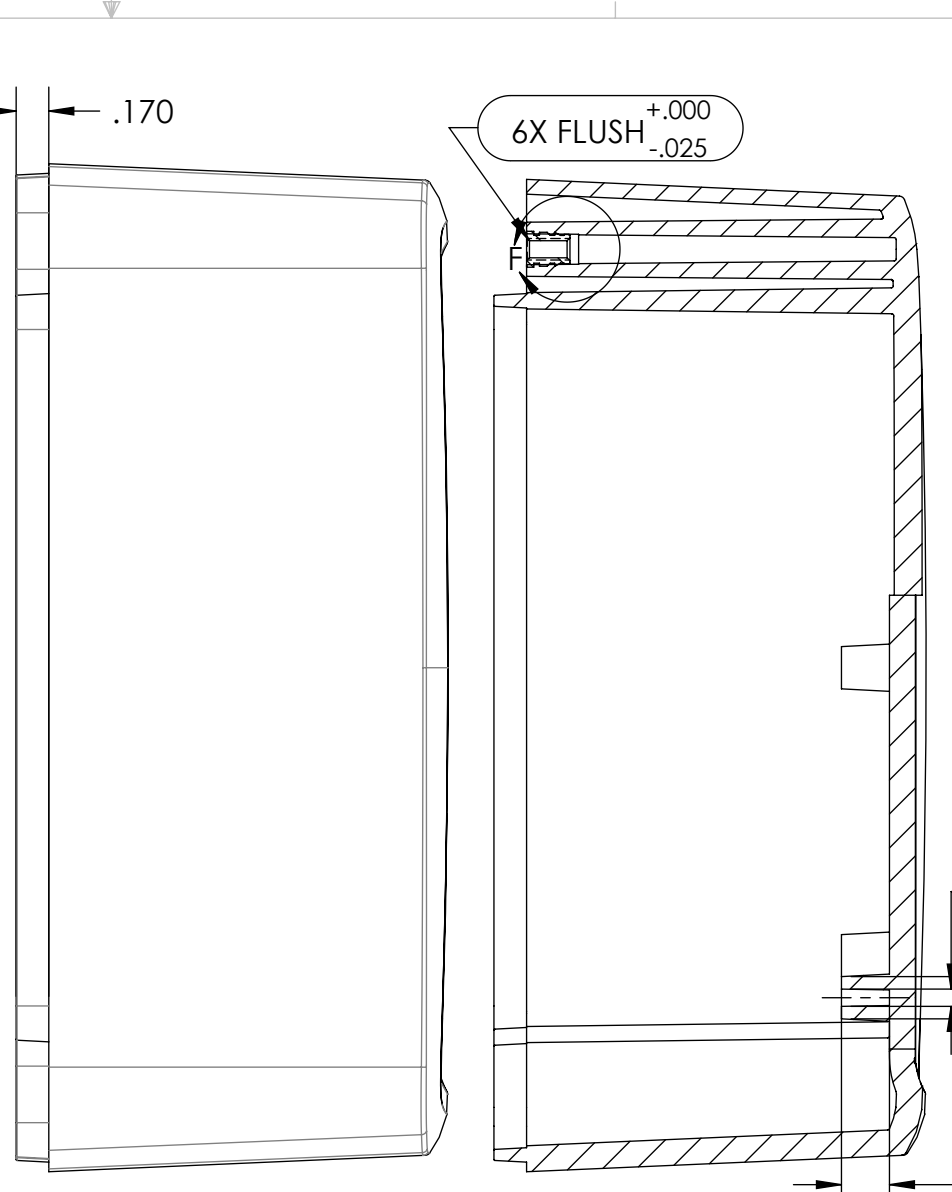
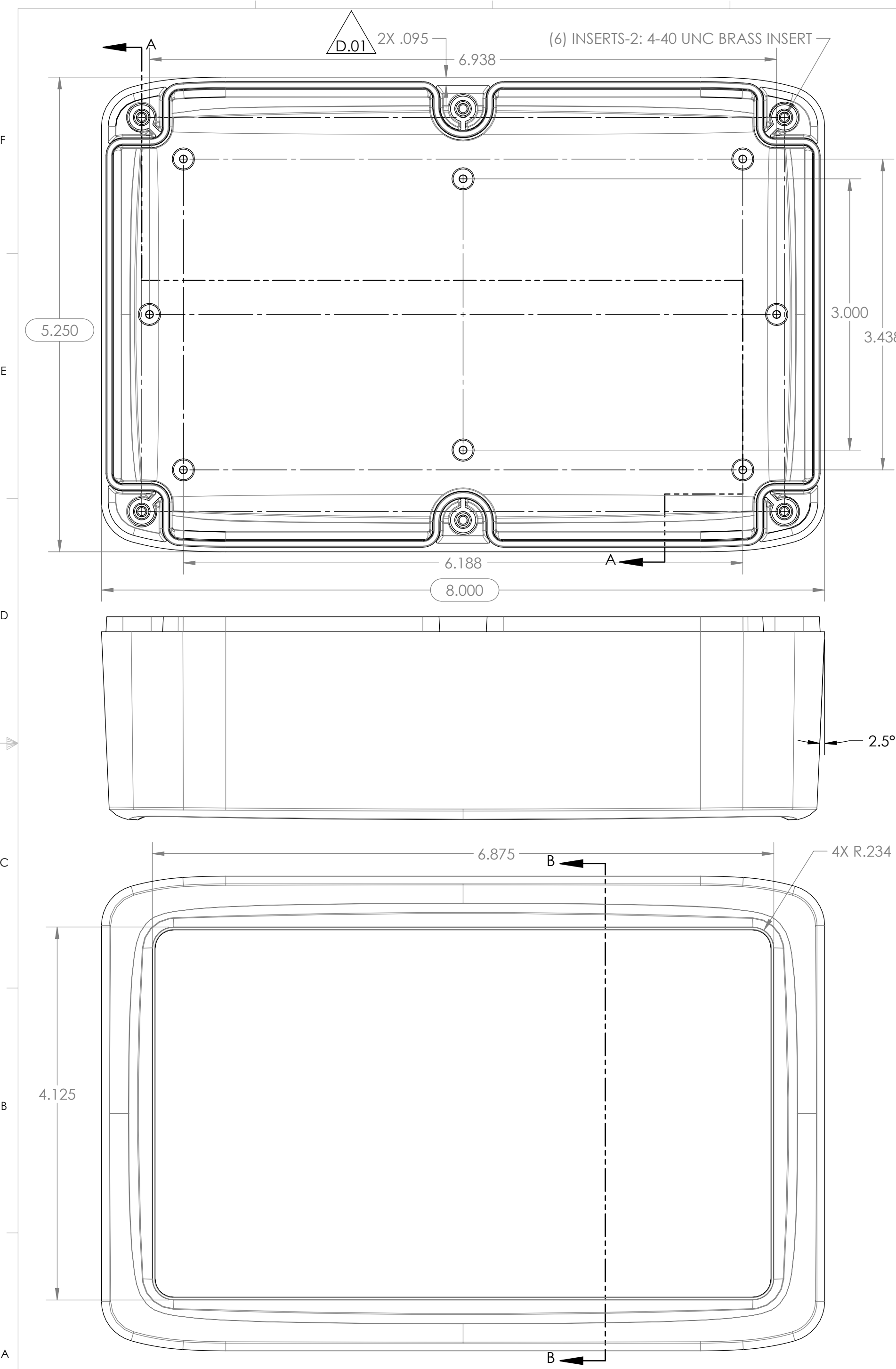
1305 CHESTER RD. PARKWAY AVON, OHIO 44011-1083 U.S.A.
 PH: 1-800-548-1233, 440-934-0444 FAX: 440-934-0088

FLAME RATING 5VA	SIZE C	BASE, W/FLANGES & PCB BOSSSES	REV
---------------------	-----------	----------------------------------	-----

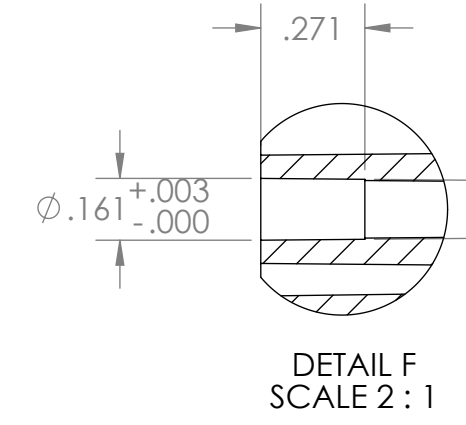
SCALE: 1:1

SHEET 1 OF 1

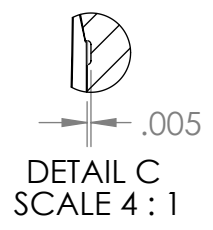
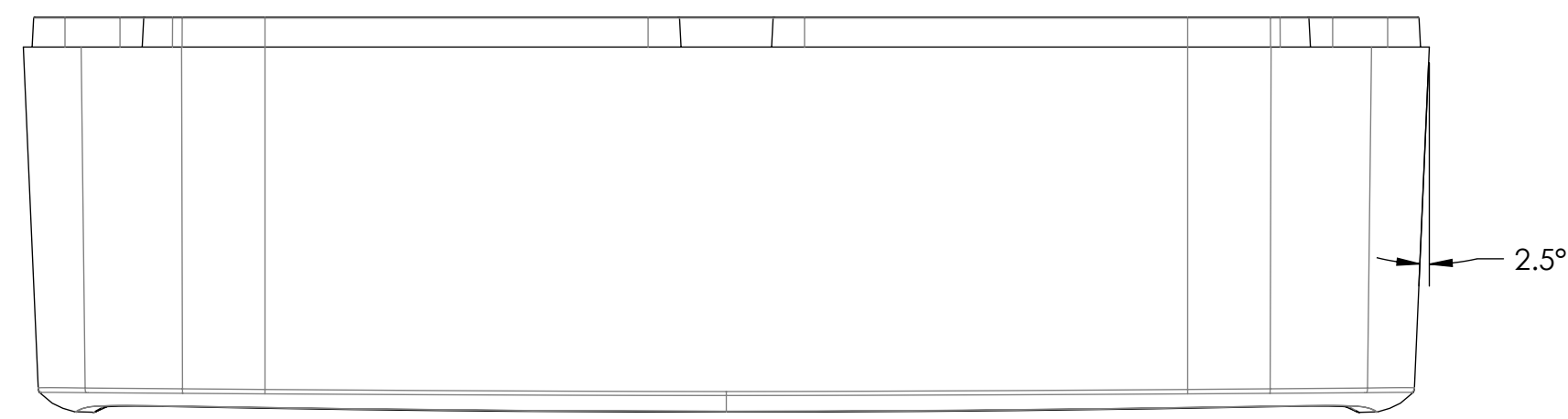
- NOTES:
- INSPECTION DIMENSION
 - EJECTOR PINS TO BE FLUSH ±.010
 - FLASH .005 MAX
 - GATE MUST BE FLUSH ±.010



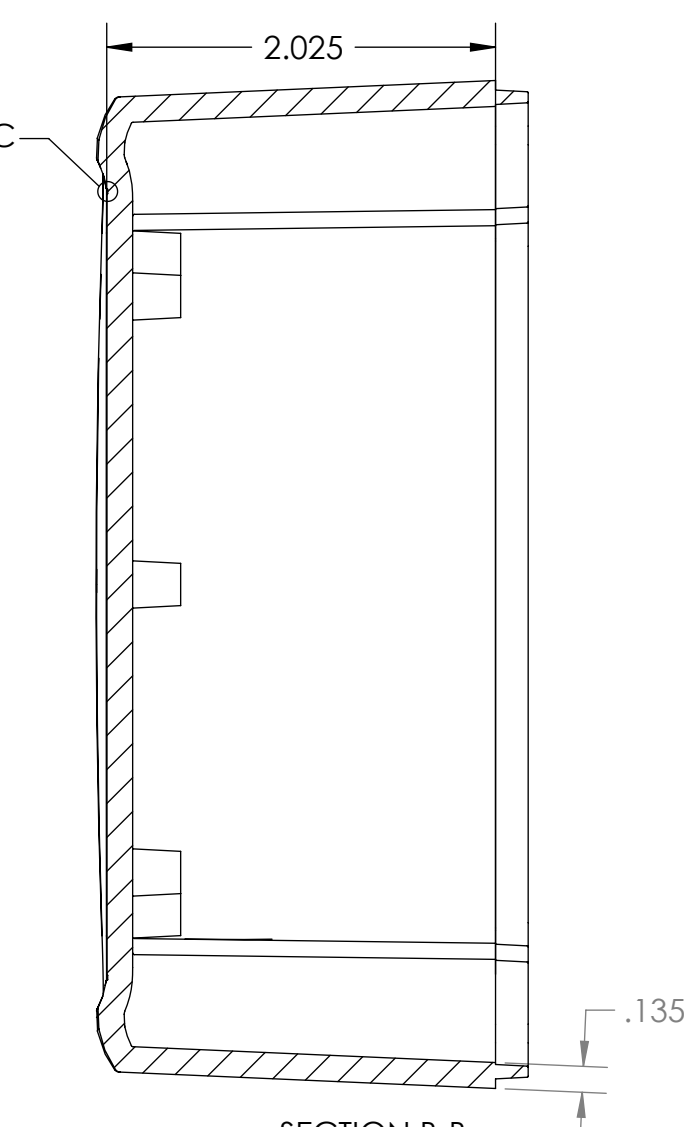
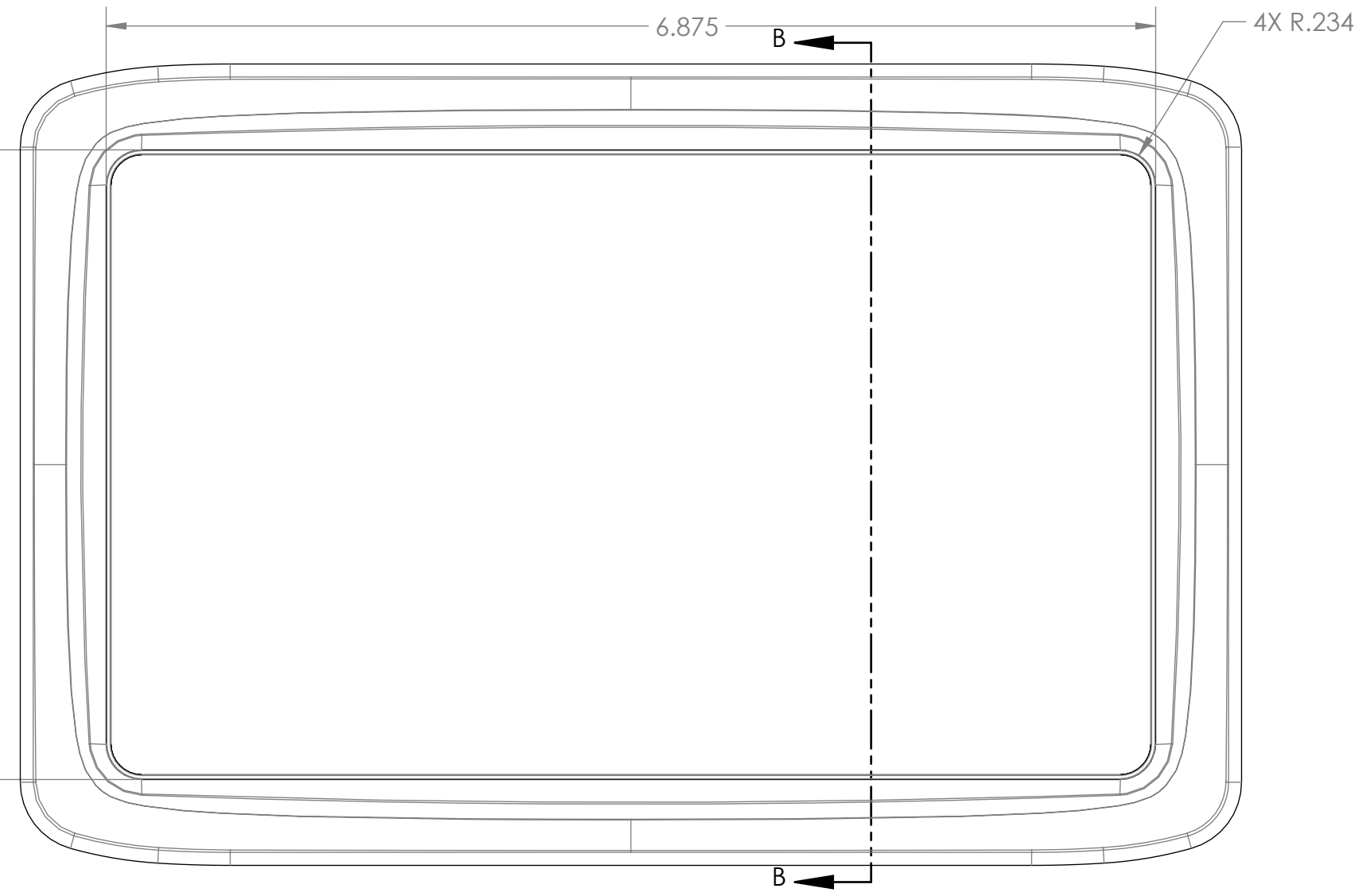
DIMENSION RANGE	TOLERANCE CHART															
	0	.039	.118	.236	.394	.591	.866	1.181	1.575	2.087	2.756	3.543	4.724	6.299	7.874	
TOOL DEPENDENT	±.007	±.007	±.008	±.008	±.009	±.010	±.011	±.012	±.013	±.015	±.017	±.020	±.024	±.028		
NON-TOOL DEPENDENT	±.003	±.004	±.004	±.004	±.005	±.006	±.007	±.008	±.009	±.011	±.013	±.016	±.020	±.024		



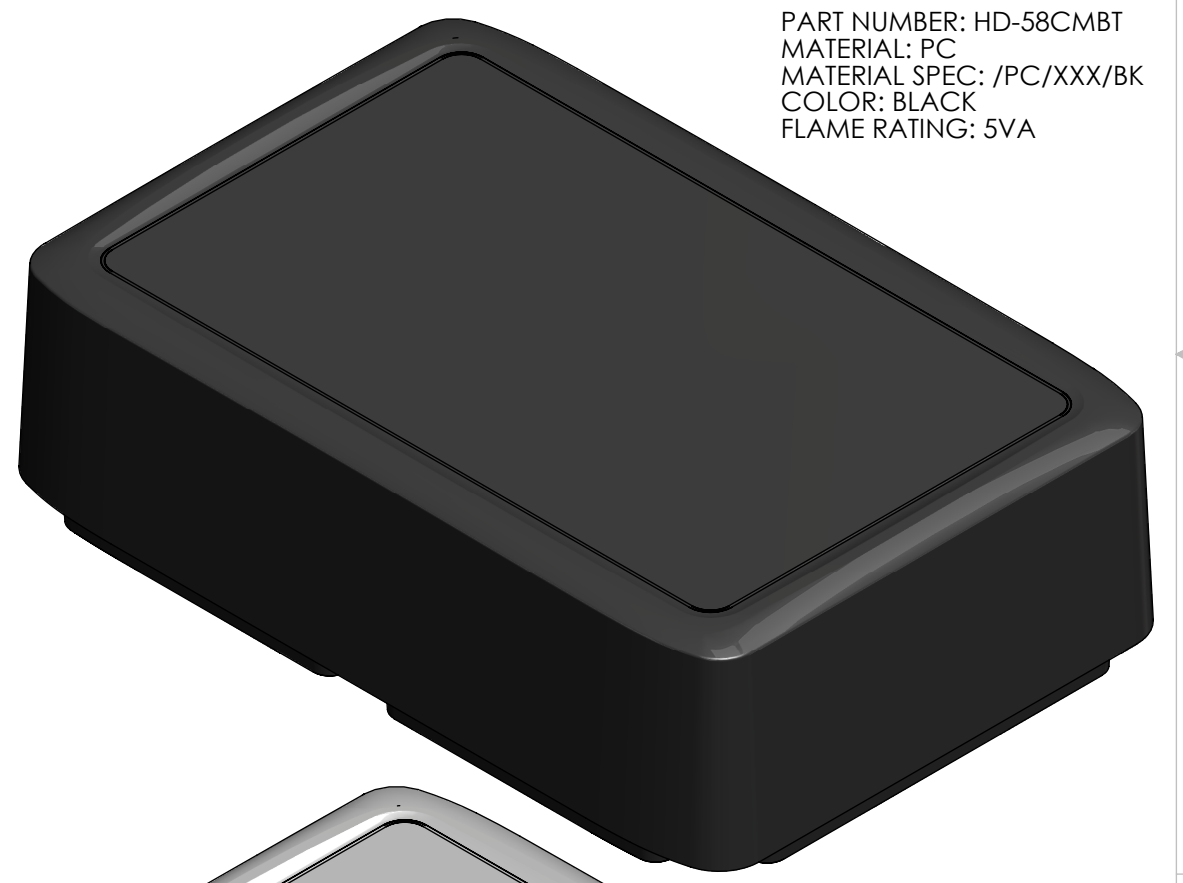
SECTION A-A



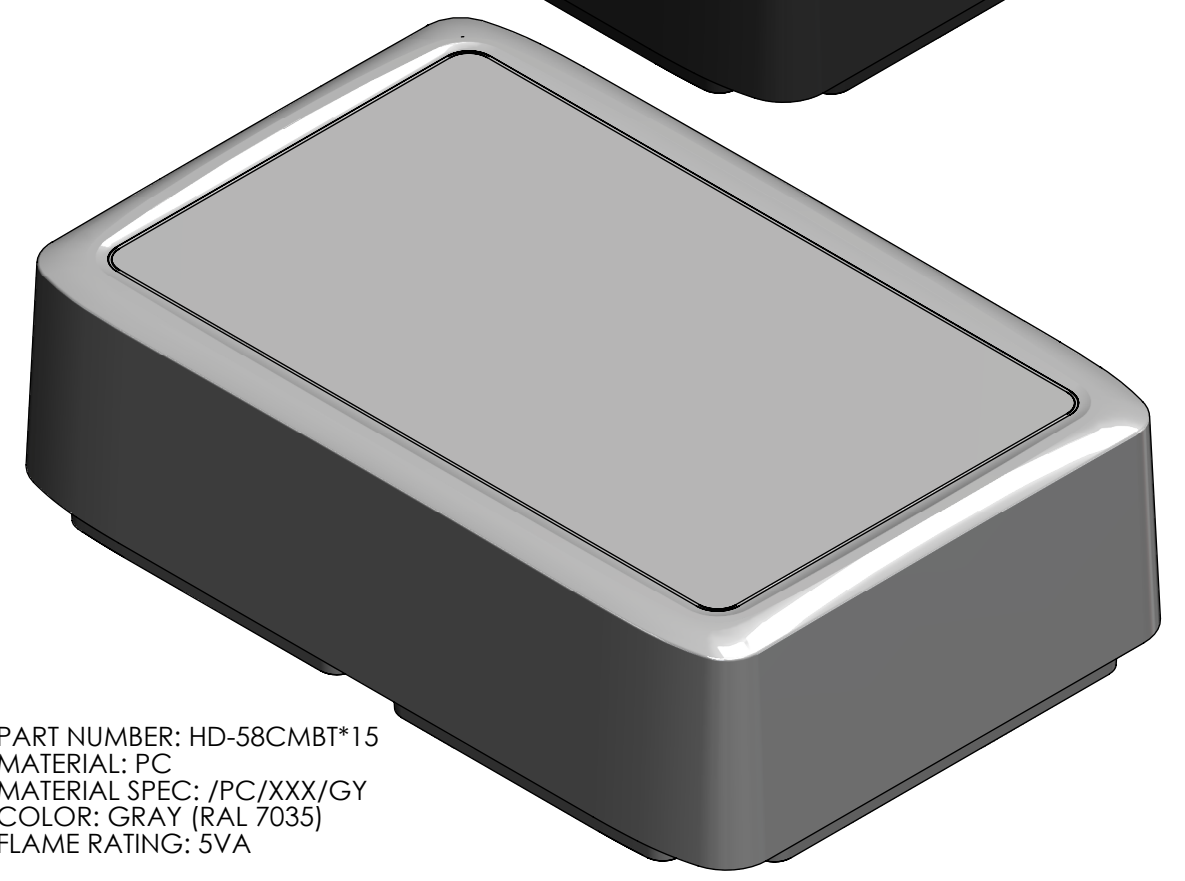
DETAIL C
SCALE 4:1



SECTION B-B



PART NUMBER: HD-58CMBT
MATERIAL: PC
MATERIAL SPEC: /PC/XXX/BK
COLOR: BLACK
FLAME RATING: 5VA



PART NUMBER: HD-58CMBT*15
MATERIAL: PC
MATERIAL SPEC: /PC/XXX/GY
COLOR: GRAY (RAL 7035)
FLAME RATING: 5VA

- NOTES:
1. (INSPECTION DIMENSION)
2. EJECTOR PINS TO BE FLUSH ±.010
3. FLASH .005 MAX
4. GATE MUST BE FLUSH ±.010

REV.	DESCRIPTION	ZONE	BY	APPR'D	DATE
-	RELEASED		D.M.F.	D.M.F.	11/16/2020

UNLESS OTHERWISE SPECIFIED: DIMENSIONS ARE IN: INCHES[mm] TOLERANCES: ANGULAR: ±°		PART NO. HD-58CMBT		 <small>1305 CHESTER RD. PARKWAY AVON, OHIO 44011-1083 U.S.A. PH: 1-800-548-1233 440-934-0444 FAX: 440-934-0088</small>	
TWO PLACE DECIMAL: ± THREE PLACE DECIMAL: ± PRINTED GRAPHICS: ±		MATERIAL PC			
PROPRIETARY AND CONFIDENTIAL THE INFORMATION CONTAINED IN THIS DRAWING IS THE SOLE PROPERTY OF POLYCASE. ANY REPRODUCTION IN PART OR AS A WHOLE WITHOUT THE WRITTEN PERMISSION OF POLYCASE IS PROHIBITED. CAD FILE: HD-58CMBT		FLAME RATING 5VA		COVER W/BRASS INSERTS	
REV. CHECKED		NAME D.M.F.		DATE 2/7/2020	
SCALE: 1:1		SIZE C		SHEET 1 OF 1	