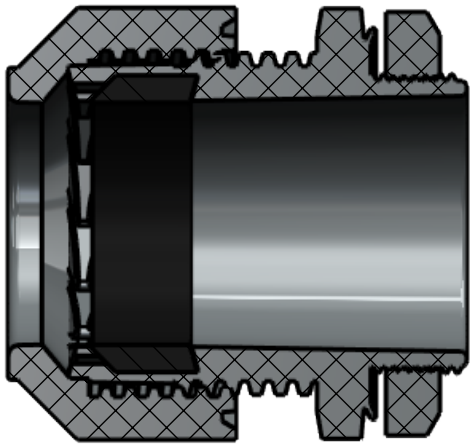
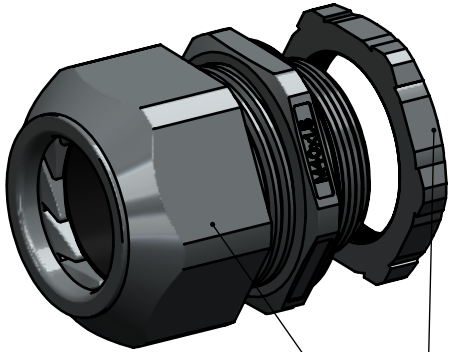


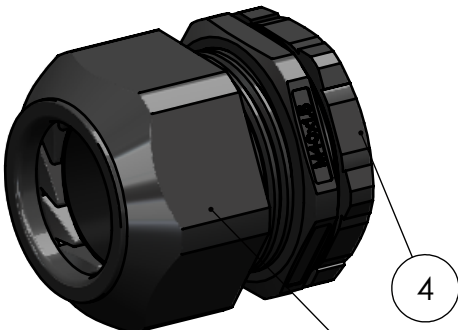
BOM Table							
ITEM NO.	PART NUMBER	Rev.	Description	Material	Color	CG-35/QTY.	CG-35-00/QTY.
1	CG-35-BODY	1	CABLE GLAND	NYLON 6/6	GRAY	1	-
2	NUT-M40-01	1	LOCK NUT	NYLON 6/6	GRAY	1	-
3	CG-35-BODY-00	1	CABLE GLAND	NYLON 6/6	BLACK	-	1
4	NUT-M40-00	1	LOCK NUT	NYLON 6/6	BLACK	-	1



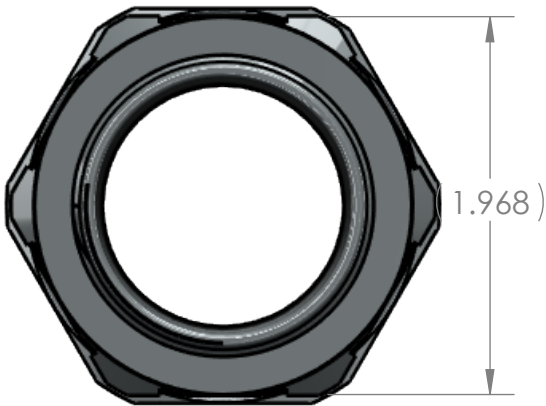
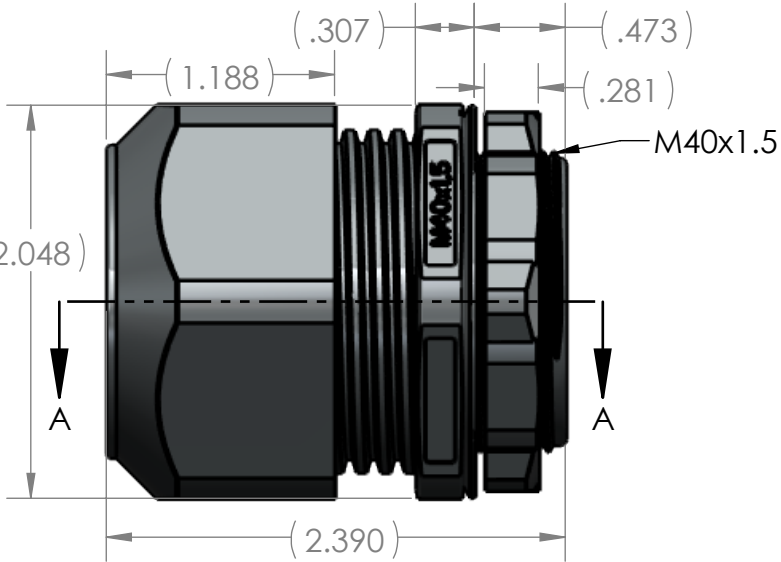
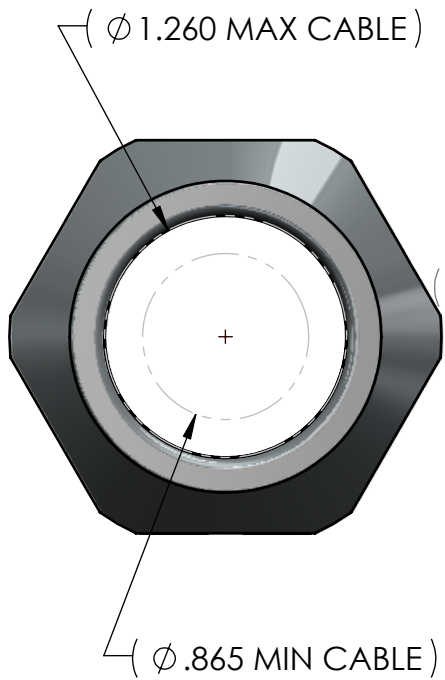
SECTION A-A



SCALE 1 : 1.5
PART NUMBER: CG-35
WEIGHT(lbs): 0.1933



SCALE 1 : 1.5
PART NUMBER: CG-35-00
WEIGHT(lbs): 0.1933



- NOTES:
- CLEARANCE MTG. HOLE: \varnothing 1.575 MIN
 - STATIC TEMPERATURE RANGE: -40°F TO 239°F

1	added black version		Douglas French	3/20/2026
0			Douglas French	9/6/2022
REV.	COMMENT	ZONE	REVISED BY	CREATION DATE
REVISIONS				

UNLESS OTHERWISE SPECIFIED:
DIMENSIONS ARE IN: INCHES [mm]
TOLERANCES: ANGULAR: $\pm 2^{\circ}$
TWO PLACE DECIMAL: $\pm .03$
THREE PLACE DECIMAL: $\pm .015$
PRINTED GRAPHICS: $\pm .010$
PROPRIETARY AND CONFIDENTIAL
THE INFORMATION CONTAINED IN THIS
DRAWING IS THE SOLE PROPERTY OF
POLYCASE. ANY REPRODUCTION IN PART
OR AS A WHOLE WITHOUT THE WRITTEN
PERMISSION OF POLYCASE IS PROHIBITED.
CAD FILE: CG-35

PART NO. CG-35		
MATERIAL		
FLAME RATING UL94V-2		SIZE B
DRAWN	NAME	DATE
CHECKED	B.M.B.	8/28/2015

1305 CHESTER IND. PARKWAY AVON, OHIO 44011-1083 U.S.A.
PH#: 1-800-248-1233, 440-934-0444 FAX#: 440-934-0088

SCALE: 1:1

SHEET 1 OF 1