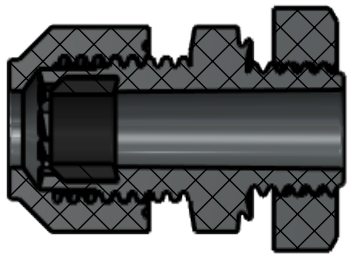
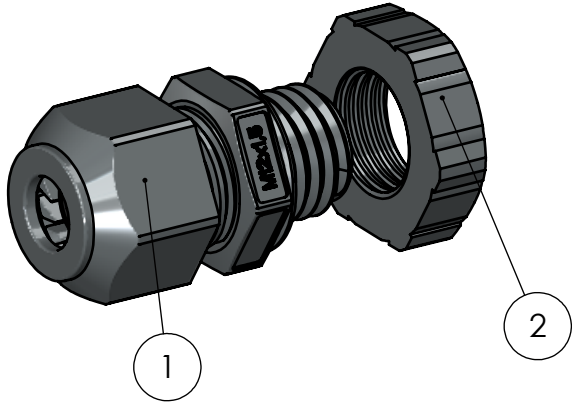
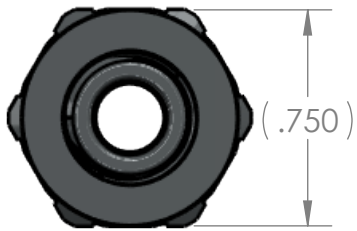
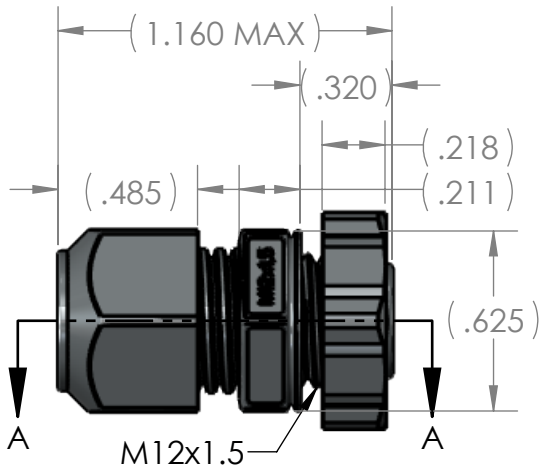
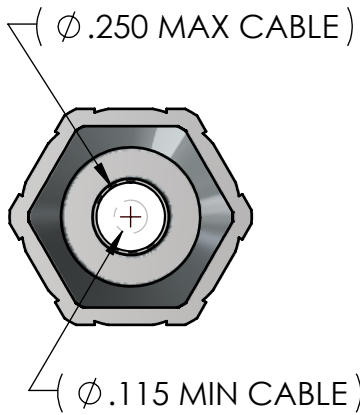


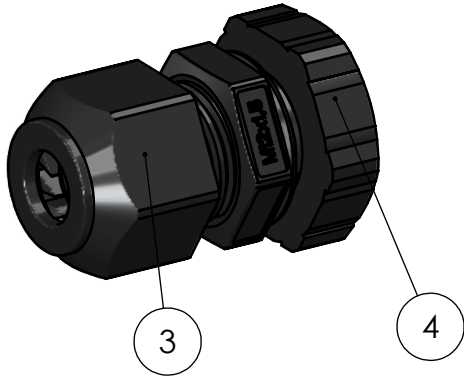
SCALE 1 : 1    SCALE 1 : 1



SECTION A-A



PART NUMBER: CG-30  
WEIGHT(lbs): 0.0140



PART NUMBER: CG-30-00  
WEIGHT(lbs): 0.0140


| BOM Table |               |      |             |           |       |            |               |
|-----------|---------------|------|-------------|-----------|-------|------------|---------------|
| ITEM NO.  | PART NUMBER   | Rev. | Description | Material  | Color | CG-30/QTY. | CG-30-00/QTY. |
| 1         | CG-30-BODY    | 1    | BODY        | NYLON 6/6 | GRAY  | 1          | -             |
| 2         | NUT-M12-01    | 1    |             | Nylon 6/6 | GRAY  | 1          | -             |
| 3         | CG-30-BODY-00 | 1    | BODY        | NYLON 6/6 | BLACK | -          | 1             |
| 4         | NUT-M12-00    | 1    |             | Nylon 6/6 | BLACK | -          | 1             |

- NOTES:
- 1. CLEARANCE MTG. HOLE: Ø .473 MIN
  - 2. STATIC TEMPERATURE RANGE: -40 °F TO 239 °F

| 1         | added black version |      | Douglas French | 3/17/2026     |
|-----------|---------------------|------|----------------|---------------|
| 0         |                     |      | Douglas French | 9/6/2022      |
| REV.      | COMMENT             | ZONE | REVISED BY     | CREATION DATE |
| REVISIONS |                     |      |                |               |

UNLESS OTHERWISE SPECIFIED:  
DIMENSIONS ARE IN: INCHES [mm]  
TOLERANCES: ANGULAR: ±2°  
TWO PLACE DECIMAL: ±.03  
THREE PLACE DECIMAL: ±.015  
PRINTED GRAPHICS: ±.010  
PROPRIETARY AND CONFIDENTIAL  
THE INFORMATION CONTAINED IN THIS  
DRAWING IS THE SOLE PROPERTY OF  
POLYCASE. ANY REPRODUCTION IN PART  
OR AS A WHOLE WITHOUT THE WRITTEN  
PERMISSION OF POLYCASE IS PROHIBITED.  
CAD FILE: CG-30

|                   |        |           |
|-------------------|--------|-----------|
| PART NO.<br>CG-30 |        |           |
| MATERIAL          |        |           |
| FLAME RATING      |        |           |
| DRAWN             | NAME   | DATE      |
| CHECKED           | B.M.B. | 8/28/2015 |



1305 CHESTER IND. PARKWAY AVON, OHIO 44011-1083 U.S.A.  
PH#: 1-800-248-1233, 440-934-0444 FAX#: 440-934-0088

SIZE  
**B**

SCALE: 1.5:1

REV  
**1**

SHEET 1 OF 1