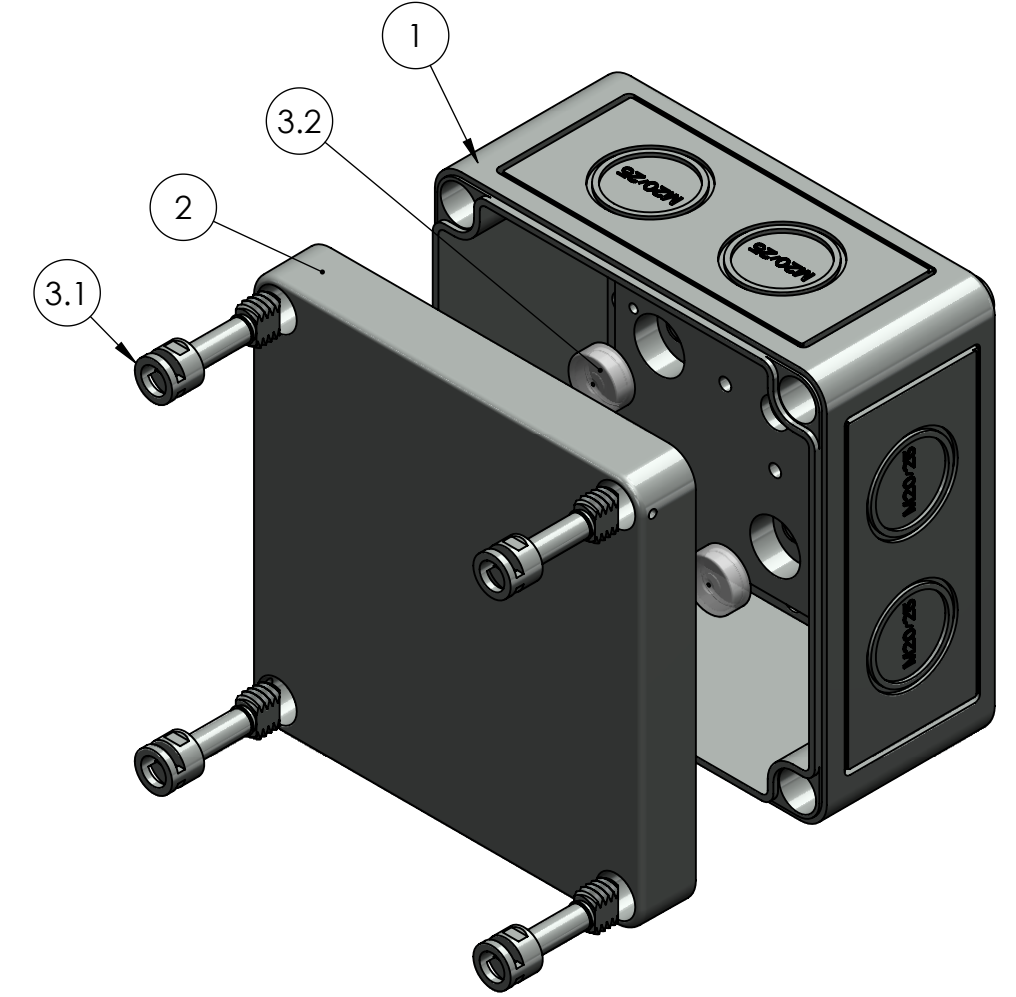
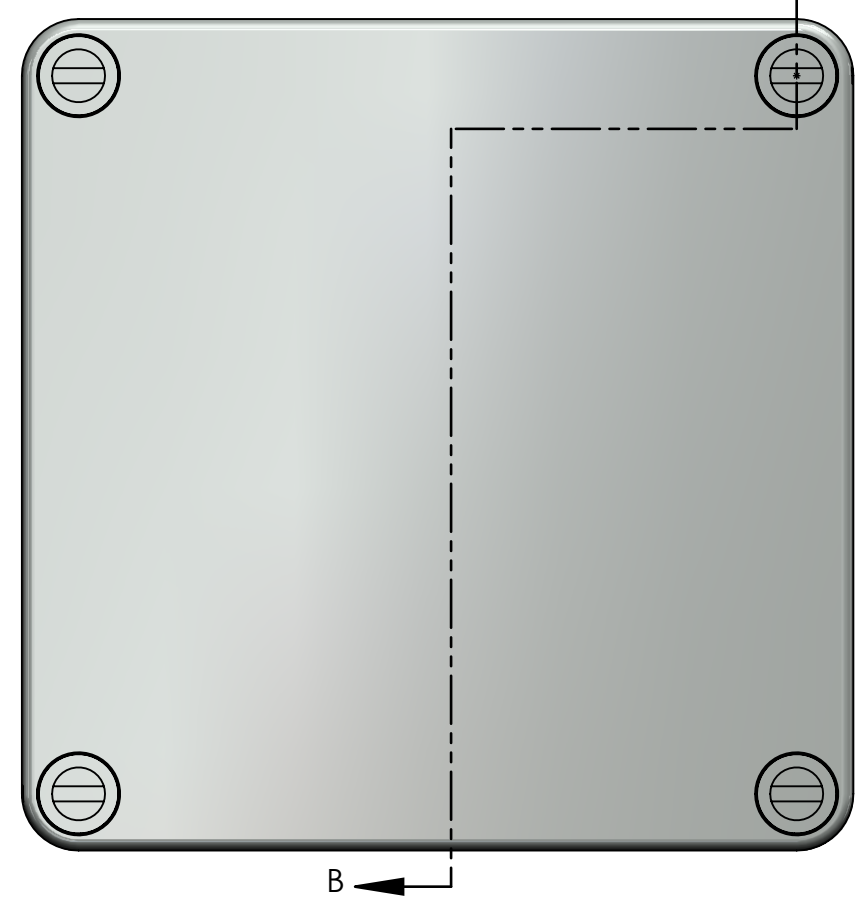
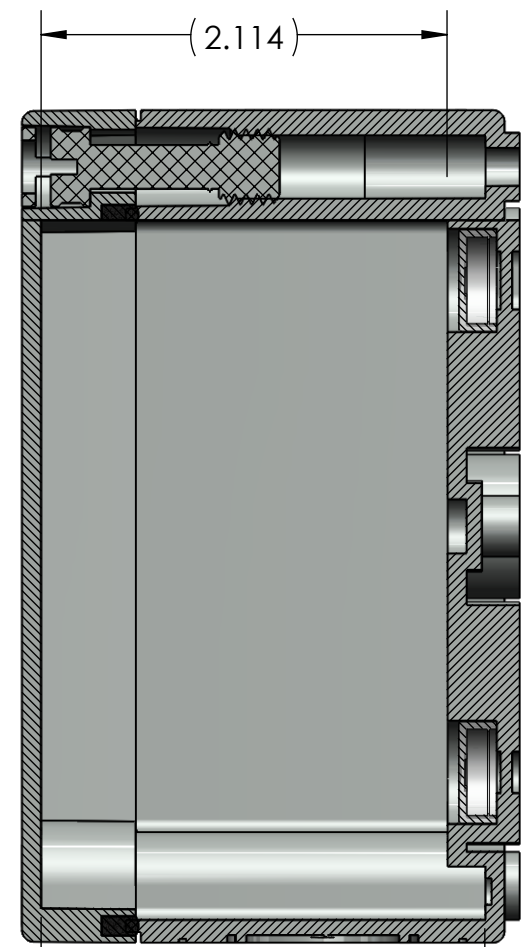
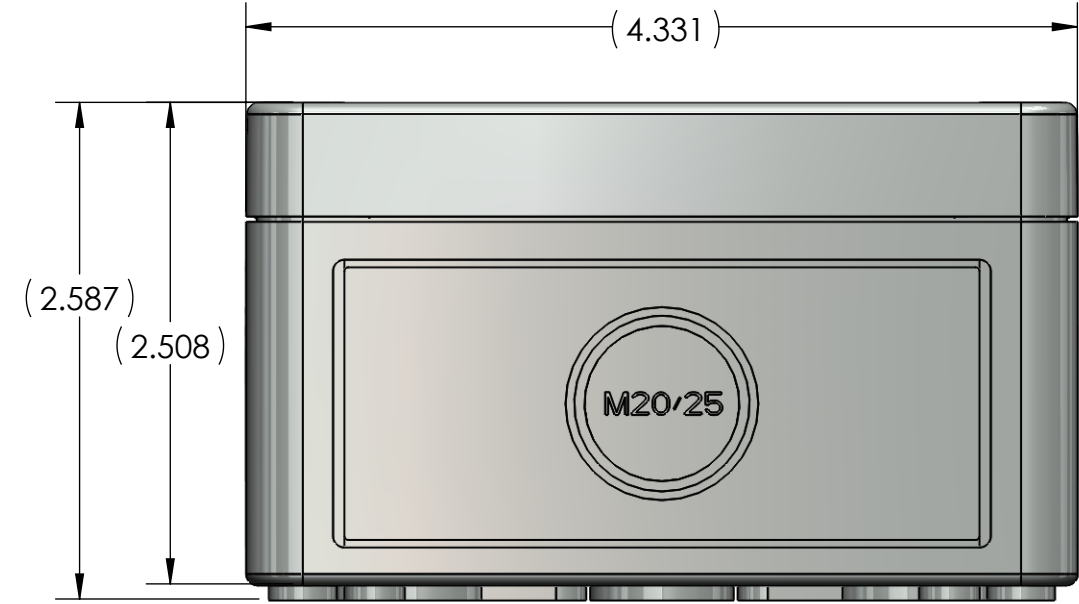


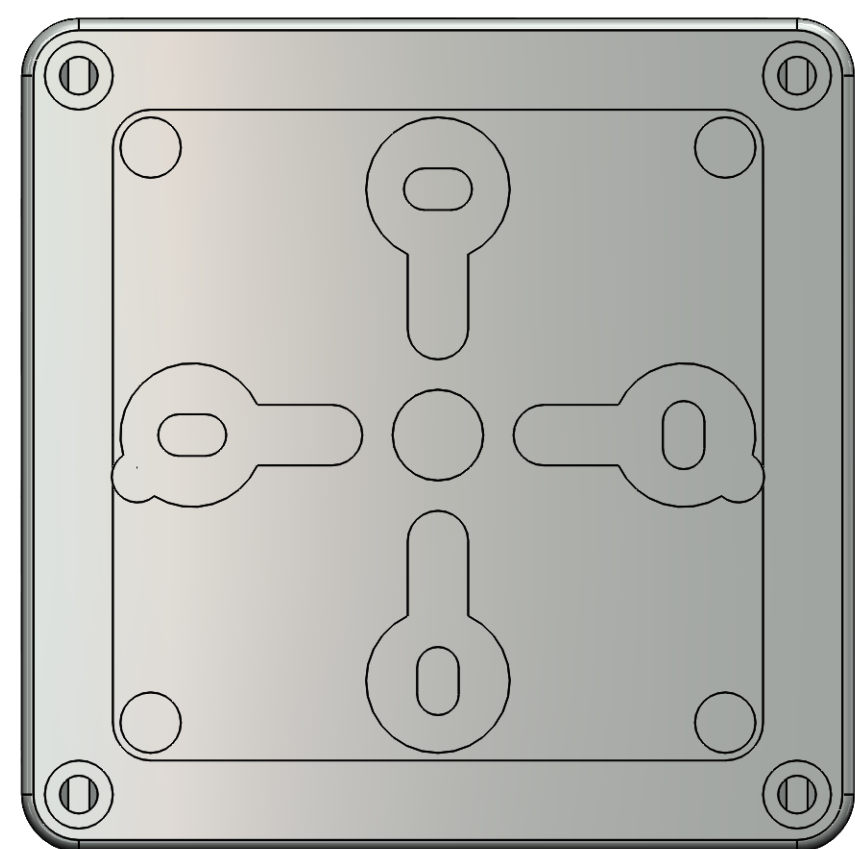
BOM Table						
ITEM NO.	PART NUMBER	Rev.	Description	Material	Color	QTY.
1	SK-14B-02	-	BASE	GFR/PC	LIGHT GRAY	1
2	SK-14C-02	-	COVER	GFR/PC	LIGHT GRAY	1
3	SK-KIT-03	-	HARDWARE KIT			1
3.1	SCREWS-014	-	ASSEMBLY FASTENER	GFR/PA6	GRAY	4
3.2	SK-CAP-02	-	SCREW HEAD CAP		CLEAR	4



PART NUMBER: SK-14-02
 FLAME RATING: 5VA per UL50/UL746C



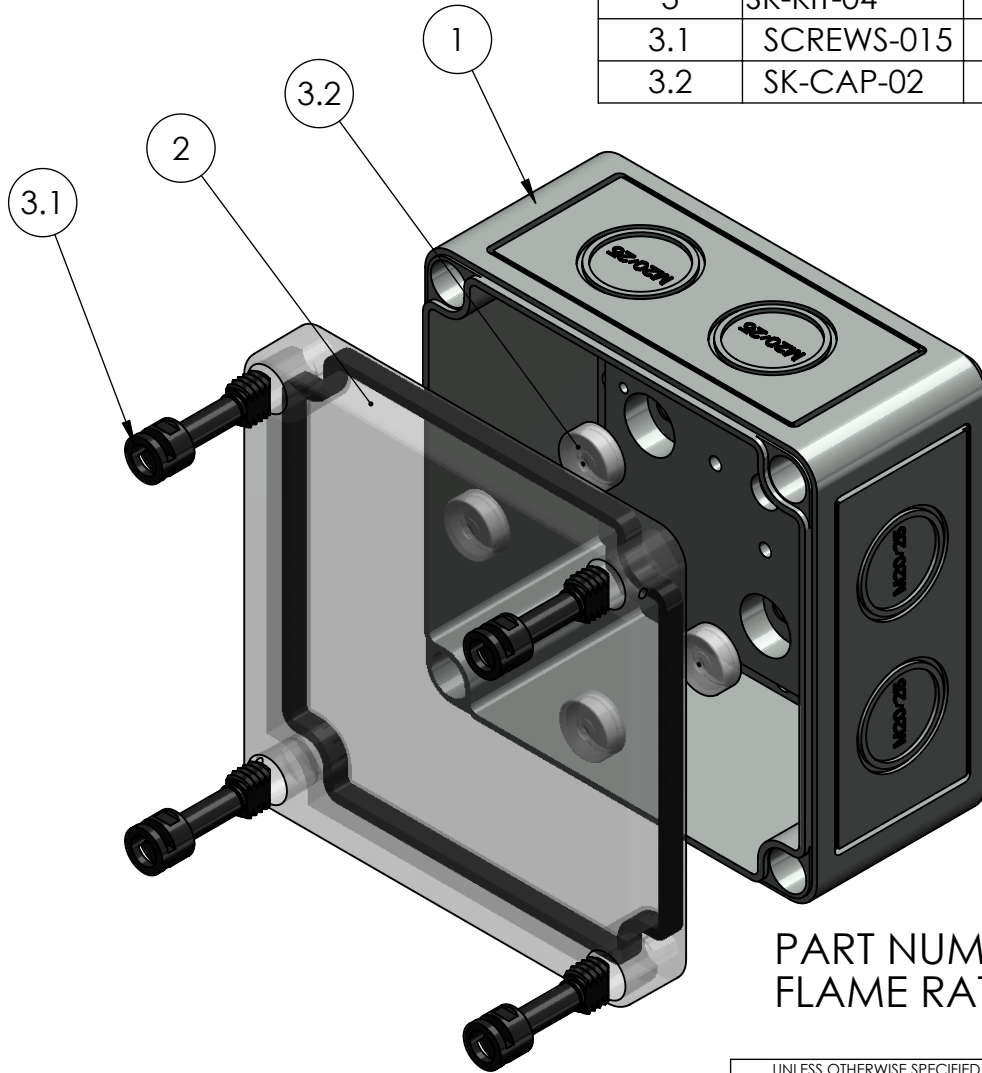
SECTION B-B




UNLESS OTHERWISE SPECIFIED: DIMENSIONS ARE IN: INCHES[mm] TOLERANCES: ANGULAR: ±2° TWO PLACE DECIMAL: ± THREE PLACE DECIMAL: ± PRINTED GRAPHICS: ±.010		PART NO. SEE BOM		 <small>1305 CHESTER RD. PARKWAY AVON, OHIO 44011-1083 U.S.A. PH: 1-800-248-1233 440-934-0444 FAX: 440-934-0088</small>	
PROPRIETARY AND CONFIDENTIAL THE INFORMATION CONTAINED IN THIS DRAWING IS THE SOLE PROPERTY OF POLYCASE. ANY REPRODUCTION IN PART OR AS A WHOLE WITHOUT THE WRITTEN PERMISSION OF POLYCASE IS PROHIBITED. CAD FILE: SK-14		MATERIAL SEE BOM			
FLAME RATING SEE BOM		SIZE C		REV -	
DRAWN CHECKED		NAME DATE		SCALE: 1:1	
REVISIONS		D.M.F. 8/25/2015		SHEET 1 OF 2	
		2/5/2013			

REV.	DESCRIPTION	ZONE	BY	APPR'D	DATE

BOM Table						
ITEM NO.	PART NUMBER	Rev.	Description	Material	Color	QTY.
1	SK-14B-02	-	BASE	GFR/PC	LIGHT GRAY	1
2	SK-14C-03	-	COVER	PC	CLEAR	1
3	SK-KIT-04	-	HARDWARE KIT			1
3.1	SCREWS-015	-	ASSEMBLY FASTENER	GFR/PA6	BLACK	4
3.2	SK-CAP-02	-	SCREW HEAD CAP		CLEAR	4



PART NUMBER: SK-14-03
 FLAME RATING: 5VA per UL50/UL746C

UNLESS OTHERWISE SPECIFIED: DIMENSIONS ARE IN: INCHES[mm] TOLERANCES: ANGULAR: ±2° TWO PLACE DECIMAL: ± THREE PLACE DECIMAL: ± PRINTED GRAPHICS: ±.010	PART NO. SEE BOM		 <small>1305 CHESTER IND. PARKWAY AVON, OHIO 44011-1083 U.S.A. PH#: 1-800-248-1233, 440-934-0444 FAX#: 440-934-0088</small>	
	MATERIAL SEE BOM			
PROPRIETARY AND CONFIDENTIAL THE INFORMATION CONTAINED IN THIS DRAWING IS THE SOLE PROPERTY OF POLYCASE. ANY REPRODUCTION IN PART OR AS A WHOLE WITHOUT THE WRITTEN PERMISSION OF POLYCASE IS PROHIBITED. CAD FILE: SK-14	FLAME RATING SEE BOM		SIZE A	REV -
	DRAWN	D.M.F.	8/25/2015	SCALE: 1:1
	CHECKED	-	2/5/2013	

5

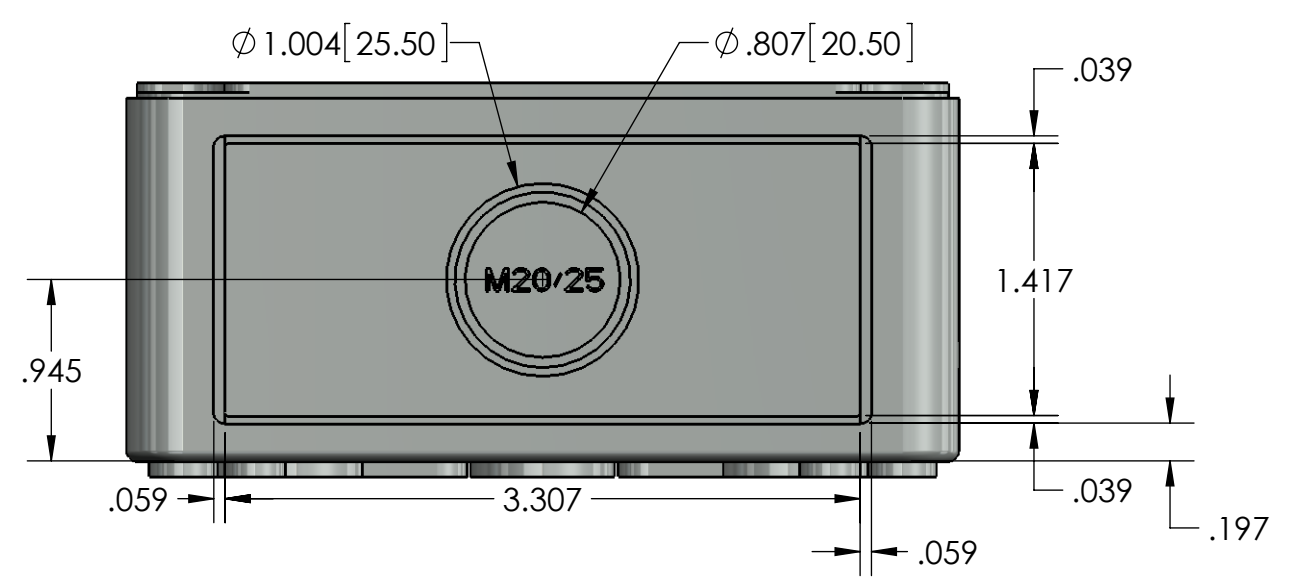
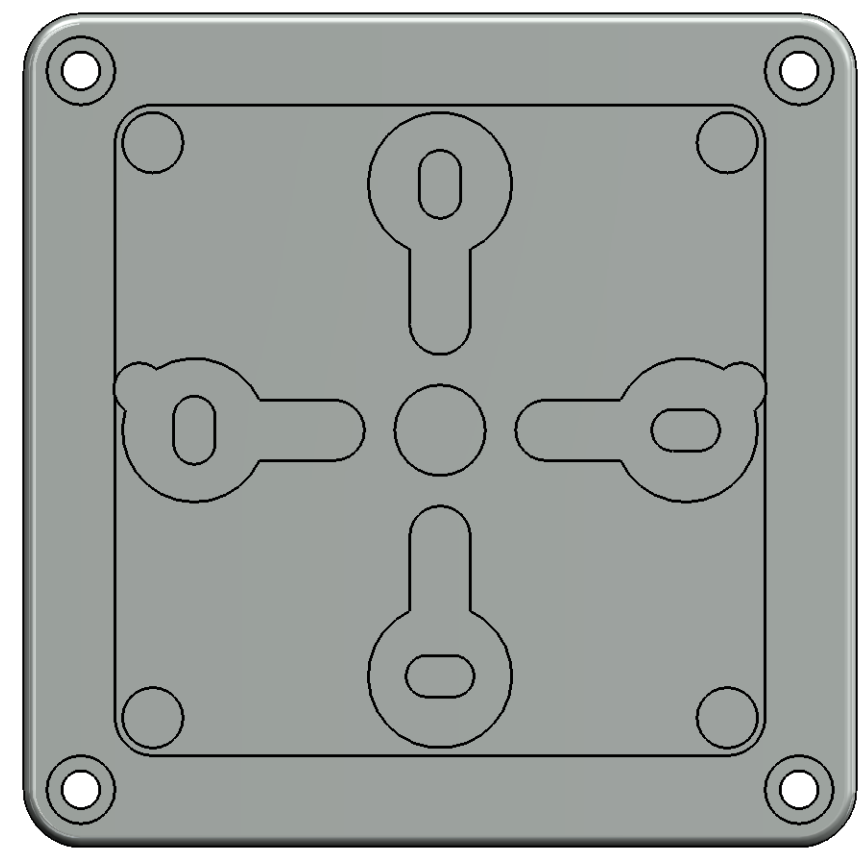
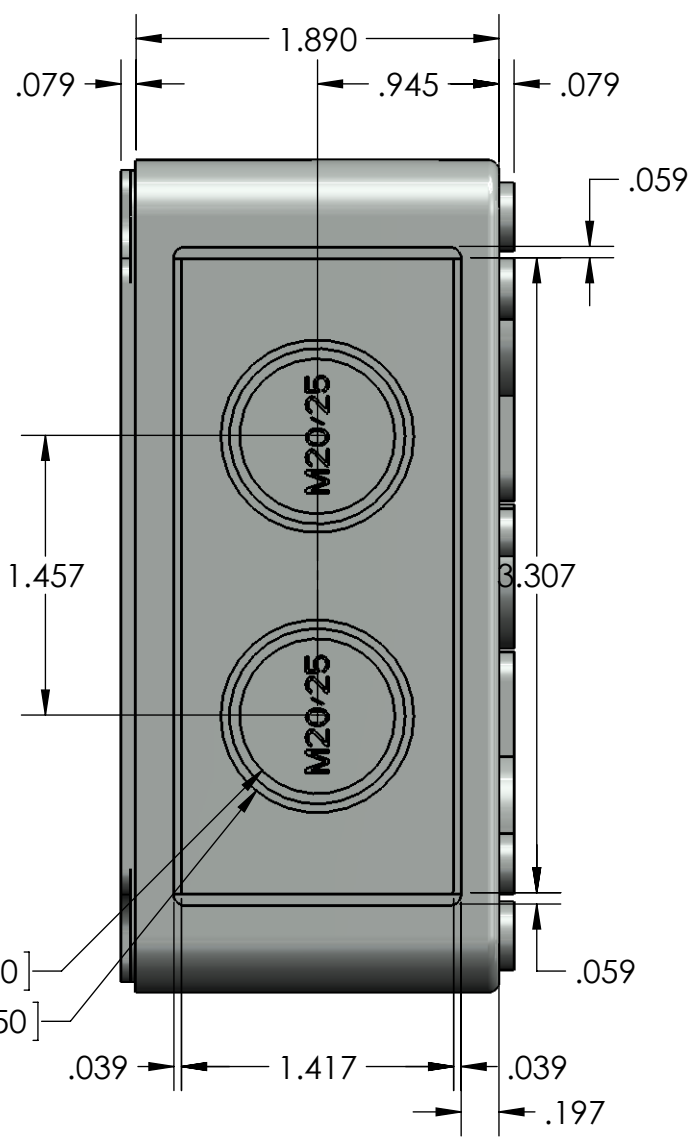
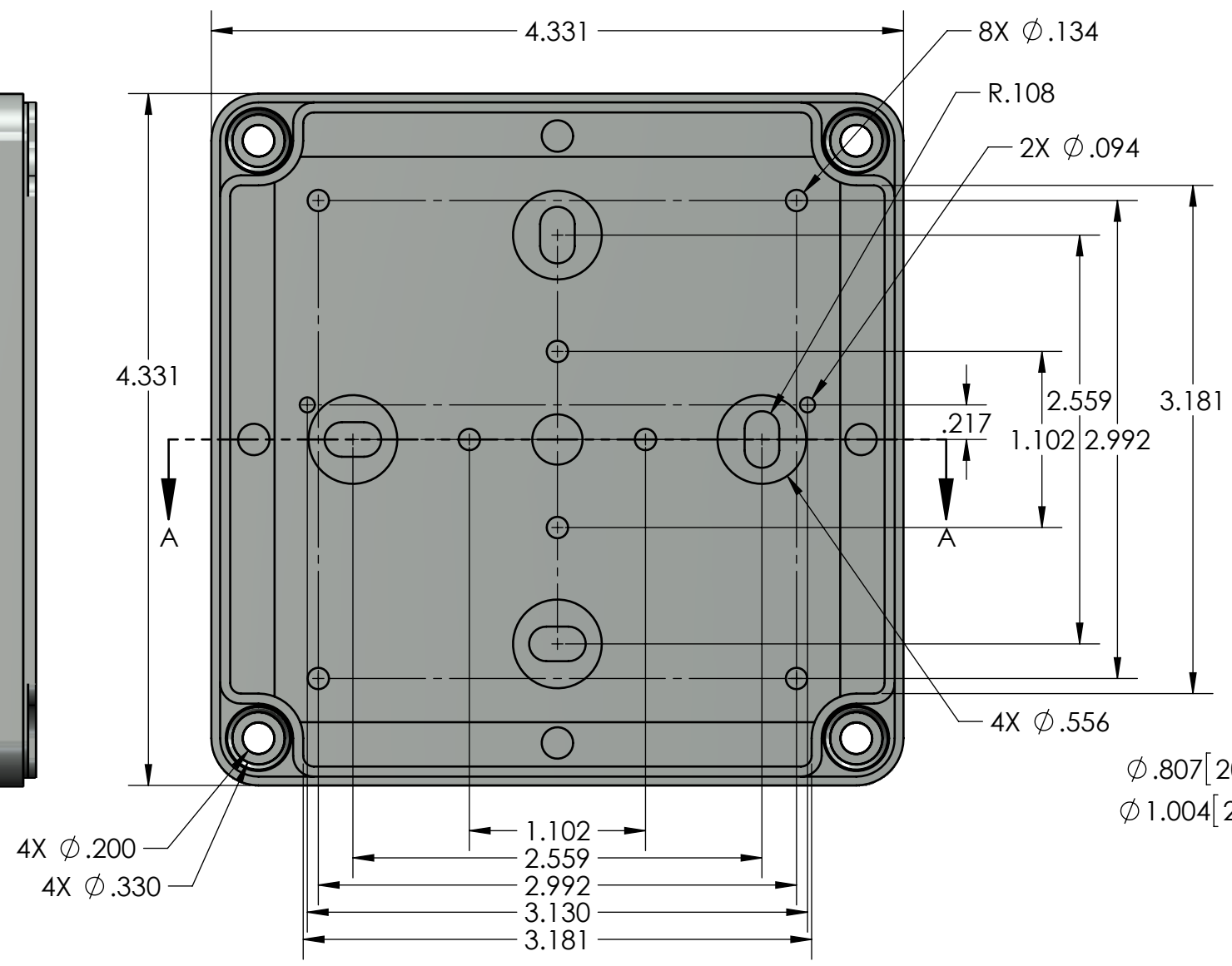
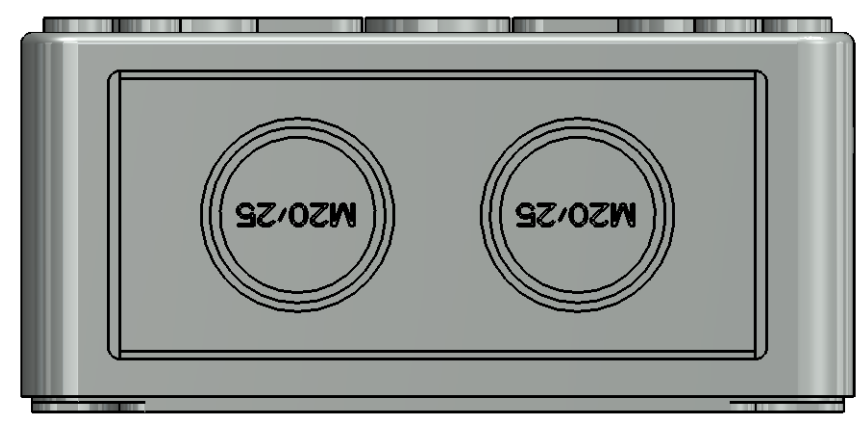
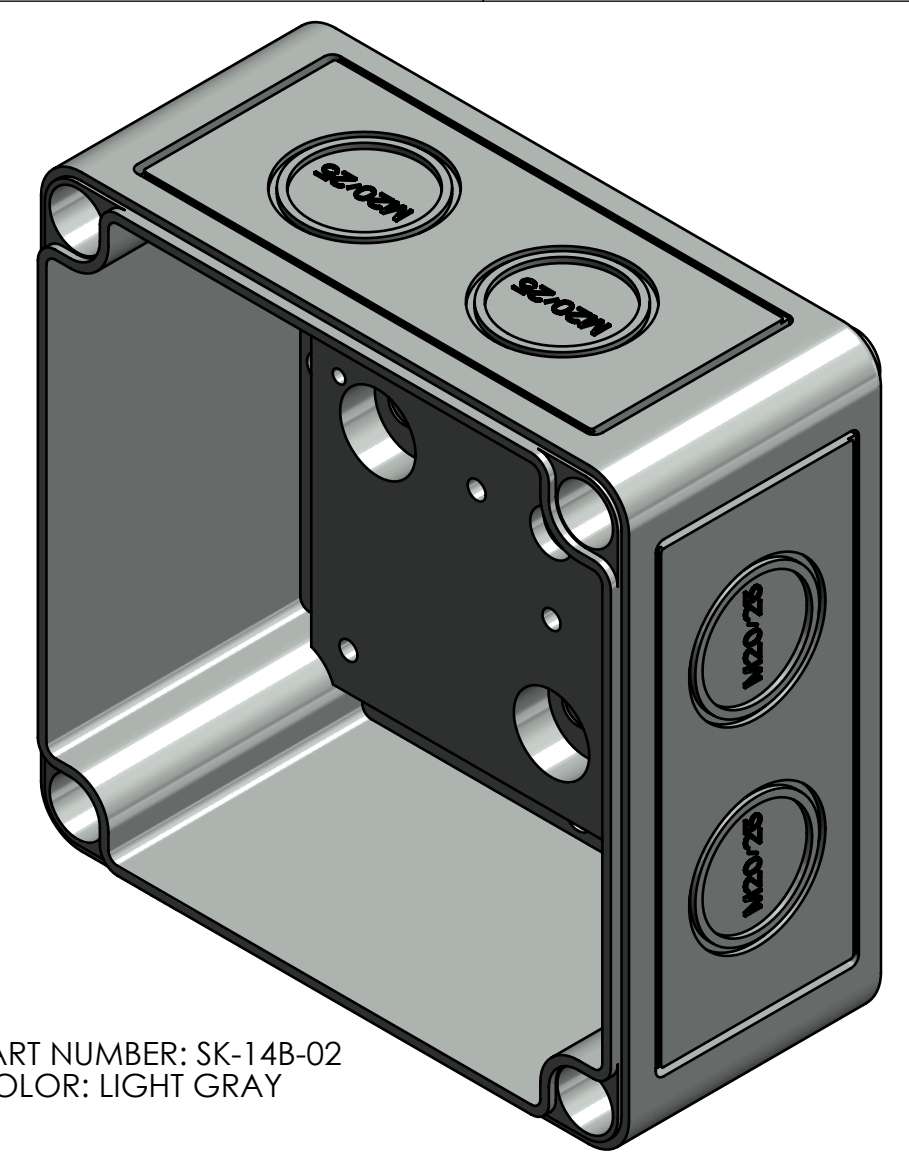
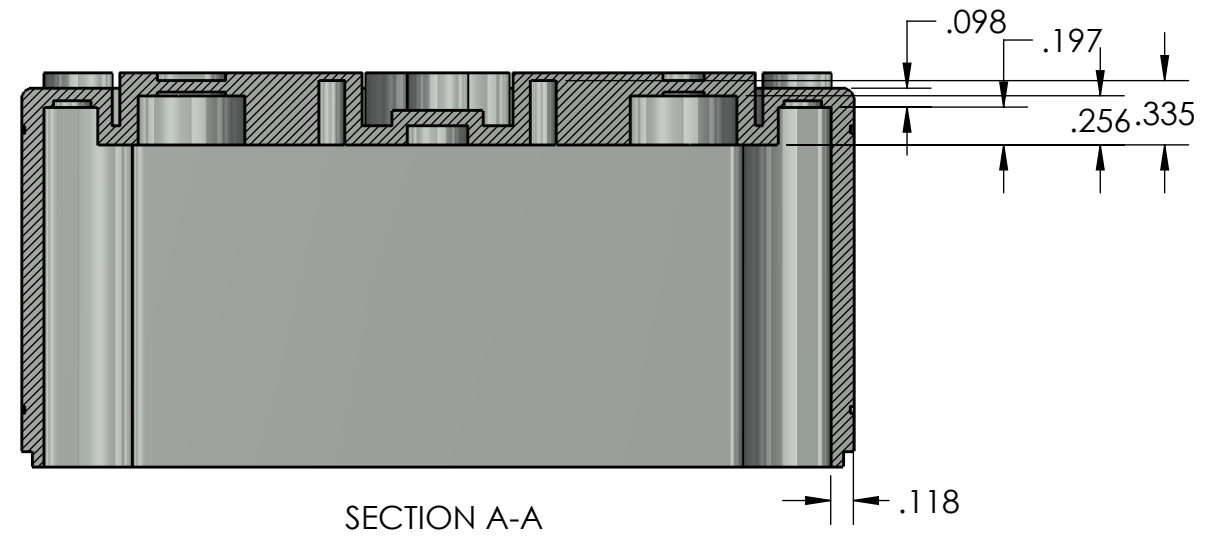
4

3

2

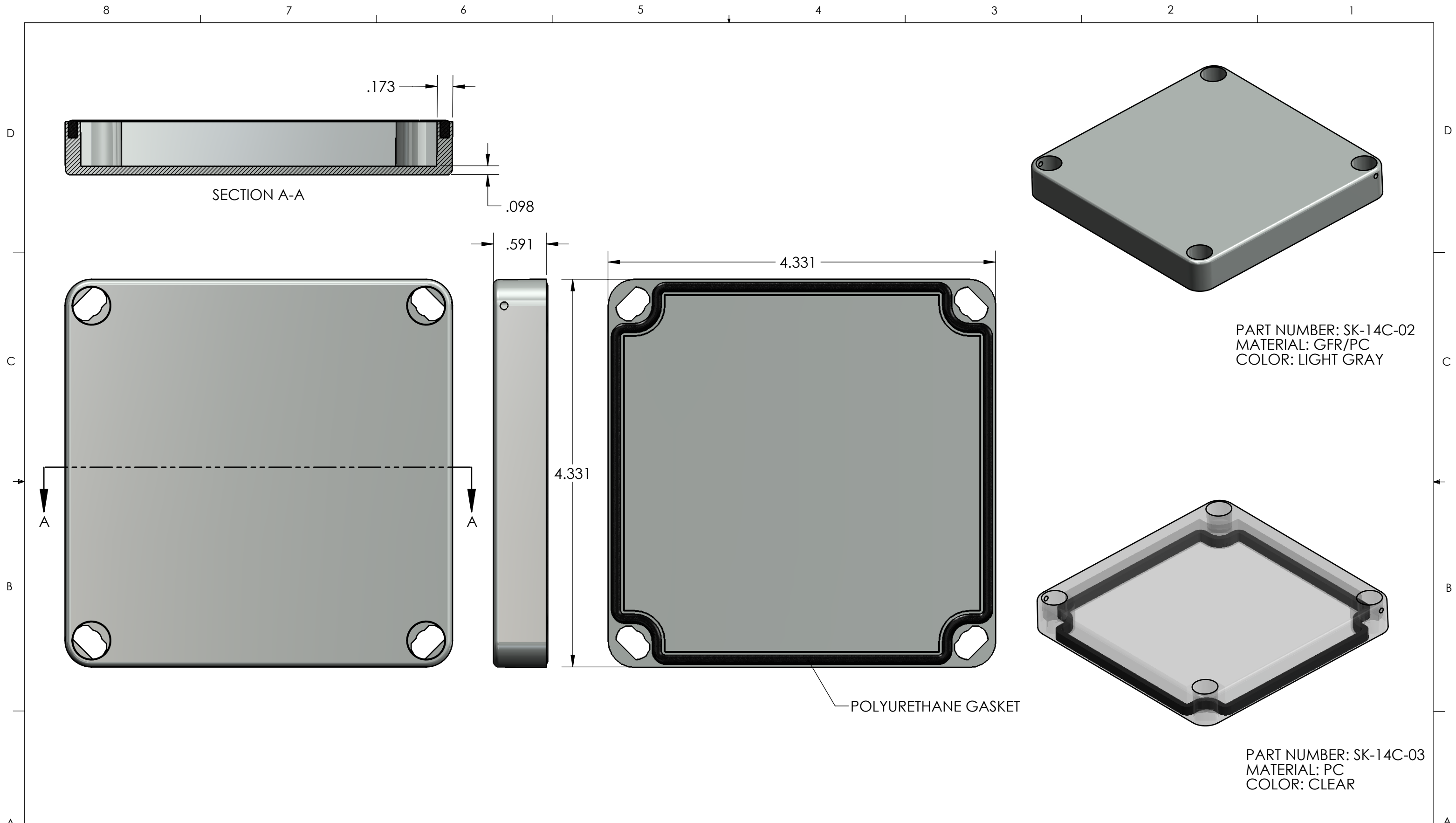
1

SHEET 2 OF 2



UNLESS OTHERWISE SPECIFIED: DIMENSIONS ARE IN: INCHES[mm] TOLERANCES: ANGULAR: ±2° TWO PLACE DECIMAL: ± THREE PLACE DECIMAL: ± PRINTED GRAPHICS: ±.010		PART NO. SK-14B-02		MATERIAL GFR/PC		FLAME RATING -		SIZE C		BASE -		REV -	
PROPRIETARY AND CONFIDENTIAL THE INFORMATION CONTAINED IN THIS DRAWING IS THE SOLE PROPERTY OF POLYCASE. ANY REPRODUCTION IN PART OR AS A WHOLE WITHOUT THE WRITTEN PERMISSION OF POLYCASE IS PROHIBITED. CAD FILE: SK-14B		DRAWN CHECKED		NAME DATE		DATE		SCALE: 1:1		SHEET 1 OF 1			
REV.		DESCRIPTION		ZONE		BY		APPR'D		DATE		REVISIONS	





UNLESS OTHERWISE SPECIFIED: DIMENSIONS ARE IN: INCHES[mm] TOLERANCES: ANGULAR: ±2° TWO PLACE DECIMAL: ± THREE PLACE DECIMAL: ± PRINTED GRAPHICS: ±.010	PART NO. SK-14C		polycase <small>1305 CHESTER IND. PARKWAY AVON, OHIO 44011-1083 U.S.A. PH#: 1-800-248-1233, 440-934-0444 FAX#: 440-934-0088</small>						
	MATERIAL -								
	FLAME RATING -	SIZE B	COVER	REV -					
	<table border="1"> <tr> <td>DRAWN</td> <td>NAME</td> <td>DATE</td> </tr> <tr> <td>CHECKED</td> <td>B.M.B.</td> <td>9/2/2015</td> </tr> </table>	DRAWN	NAME	DATE	CHECKED	B.M.B.	9/2/2015	SCALE: 1:1	SHEET 1 OF 1
DRAWN	NAME	DATE							
CHECKED	B.M.B.	9/2/2015							

REV.	DESCRIPTION	ZONE	BY	APPR'D	DATE
REVISIONS					