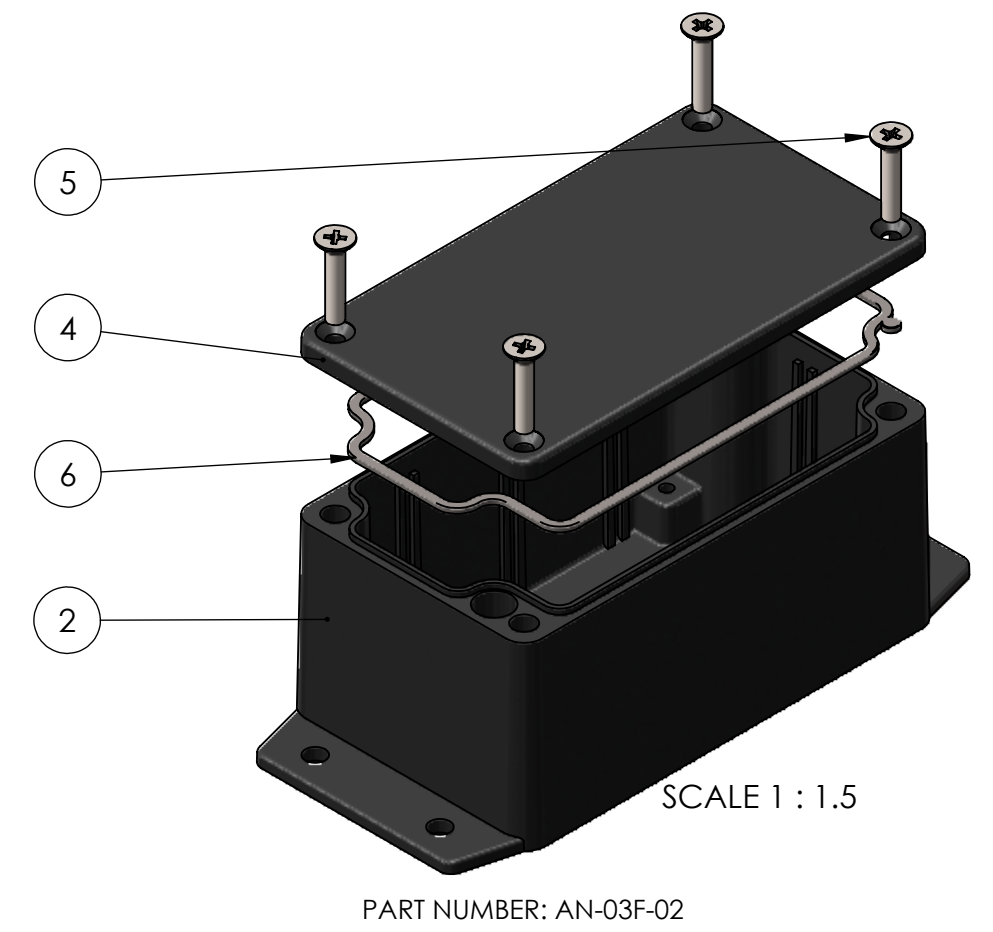
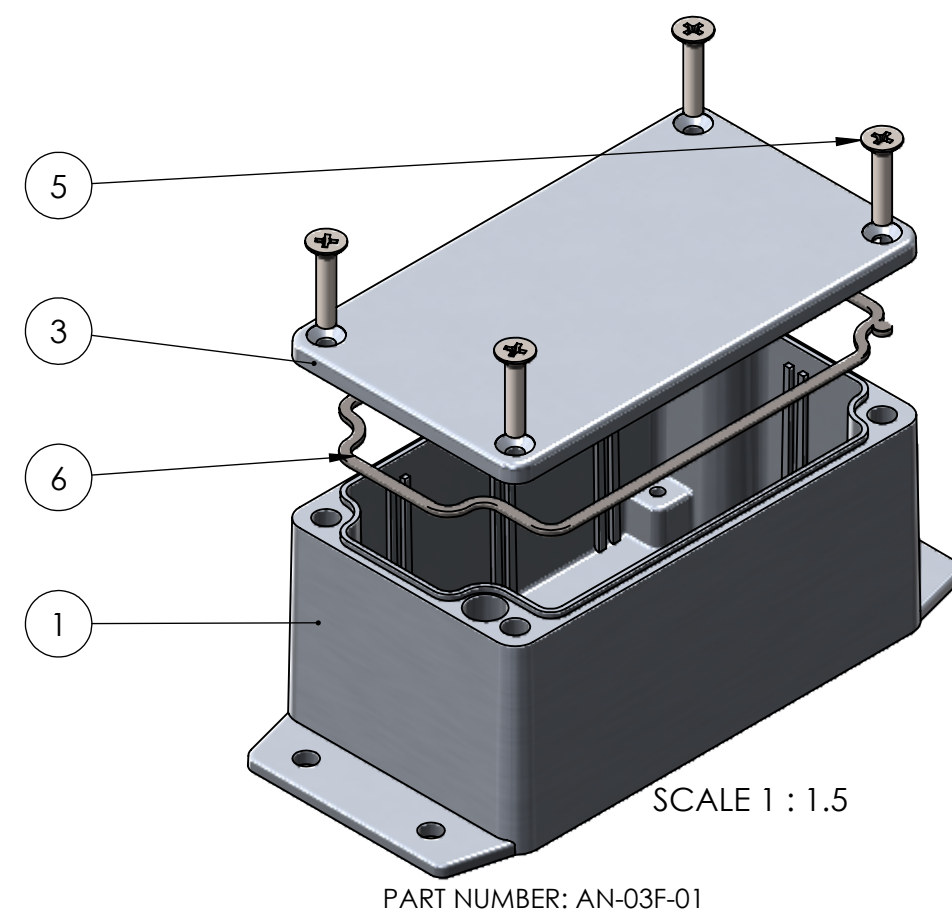
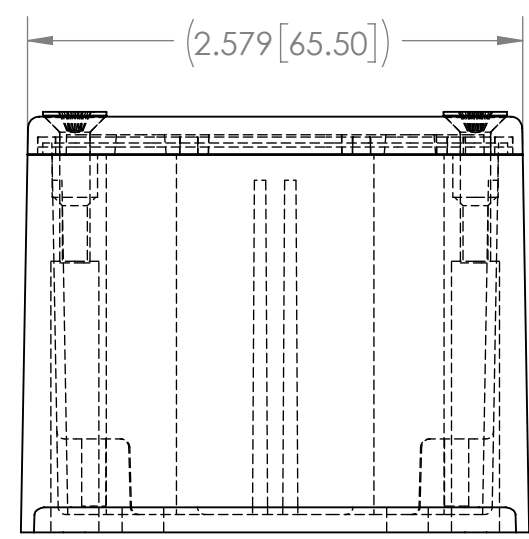
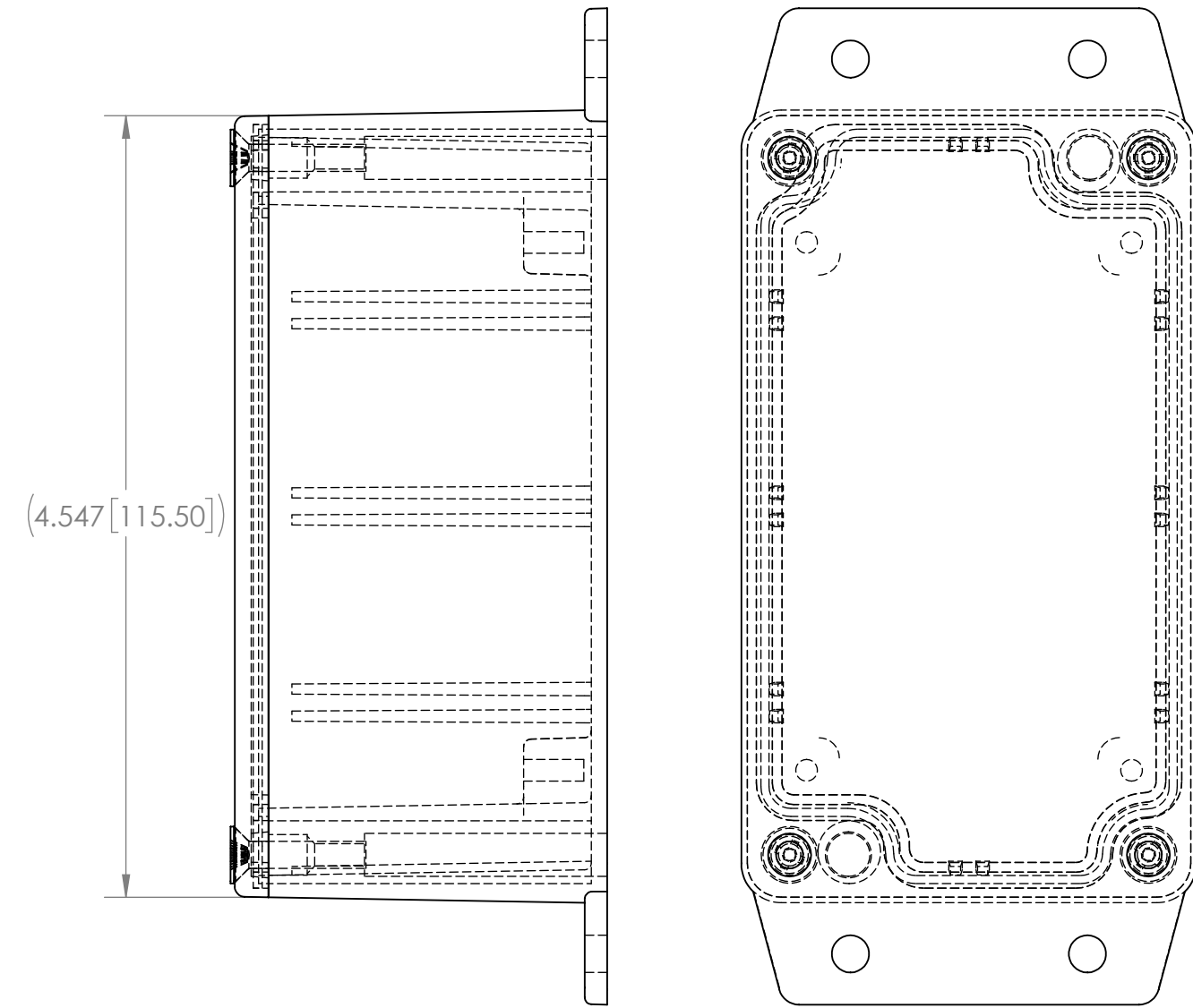
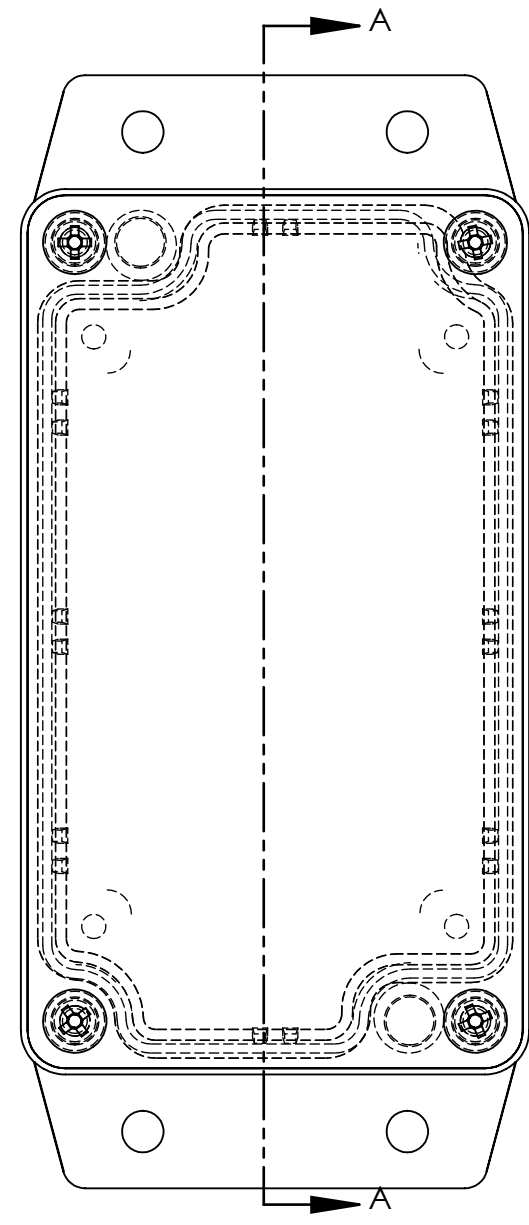
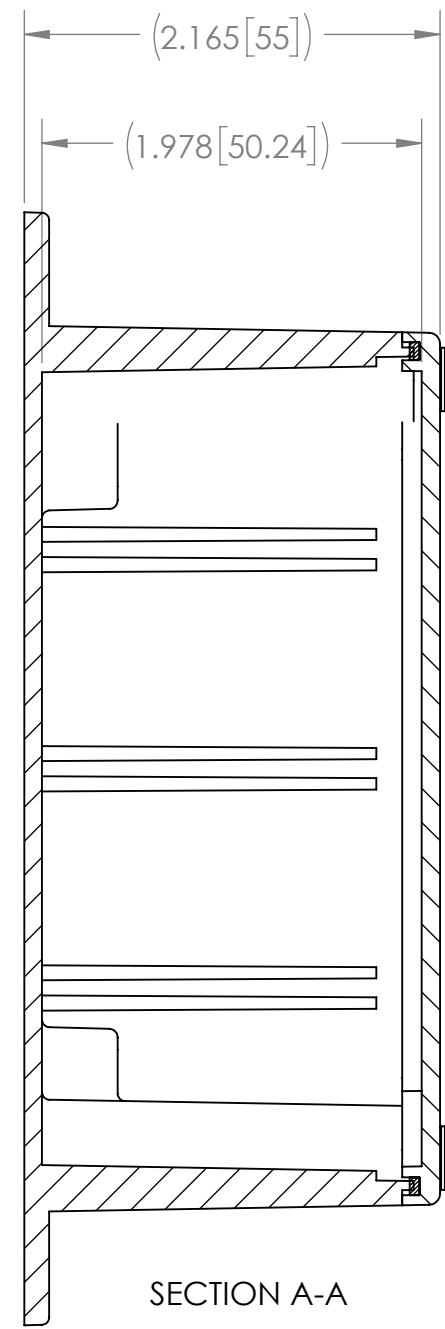


BOM Table								
ITEM NO.	PART NUMBER	Rev.	Description	Material	Color	AN-03F-01/QTY.	AN-03F-02/QTY.	
1	AN-03BF-01	-	ALUMINUM NEMA BASE WITH FLANGE	ALUMINUM ADC12	NATURAL	1	-	
2	AN-03BF-02	-	ALUMINUM NEMA BASE WITH FLANGE	ALUMINUM ADC12	BLACK	-	1	
3	AN-02C-01	-	COVER	ALUMINUM ADC12	NATURAL	1	-	
4	AN-02C-02	-	COVER	ALUMINUM ADC12	BLACK	-	1	
5	SCREWS-034-4	-	M4X0.7 X 20mm FHMS 4-PACK			1	1	
6	GASKET-102-01	-	GASKET	SILICONE	GRAY	1	1	

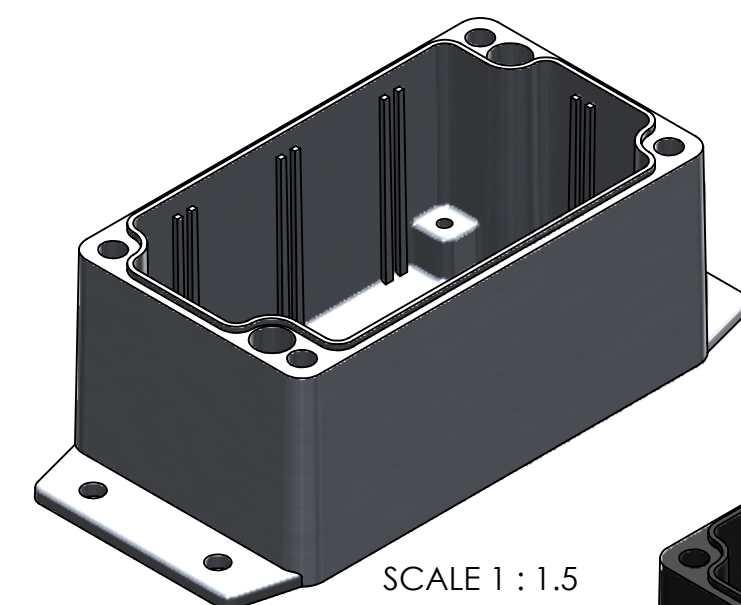
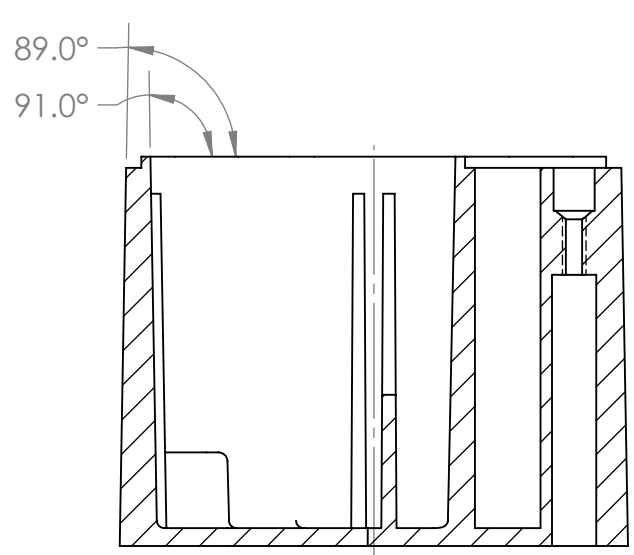
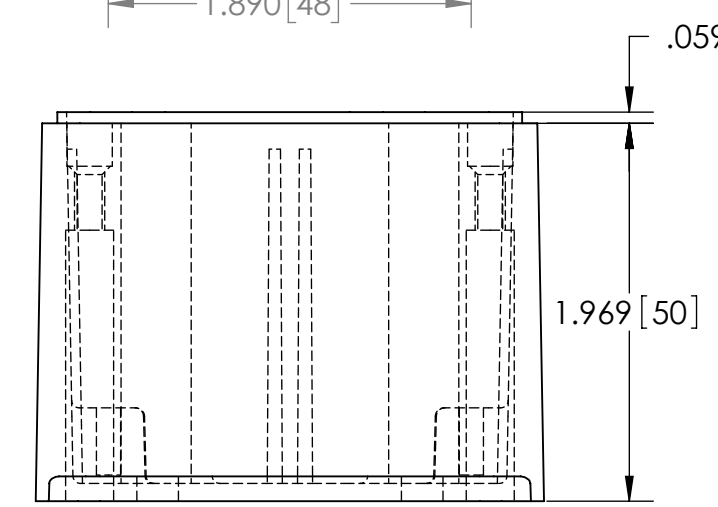
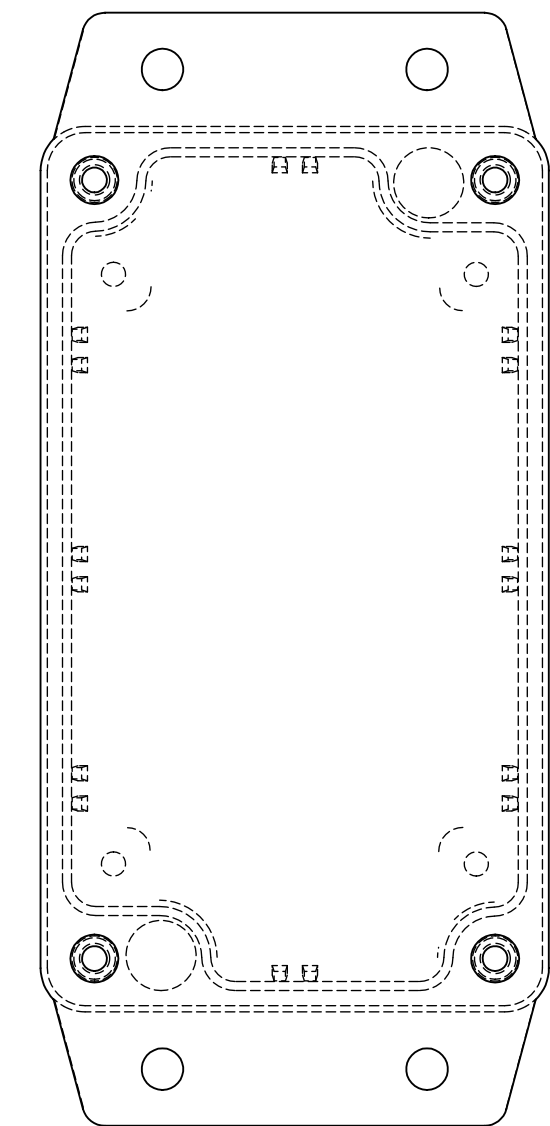
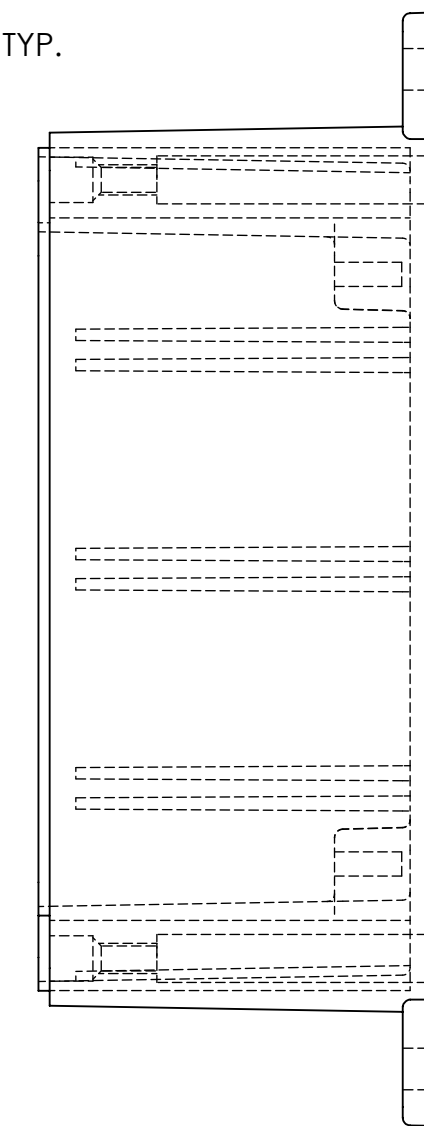
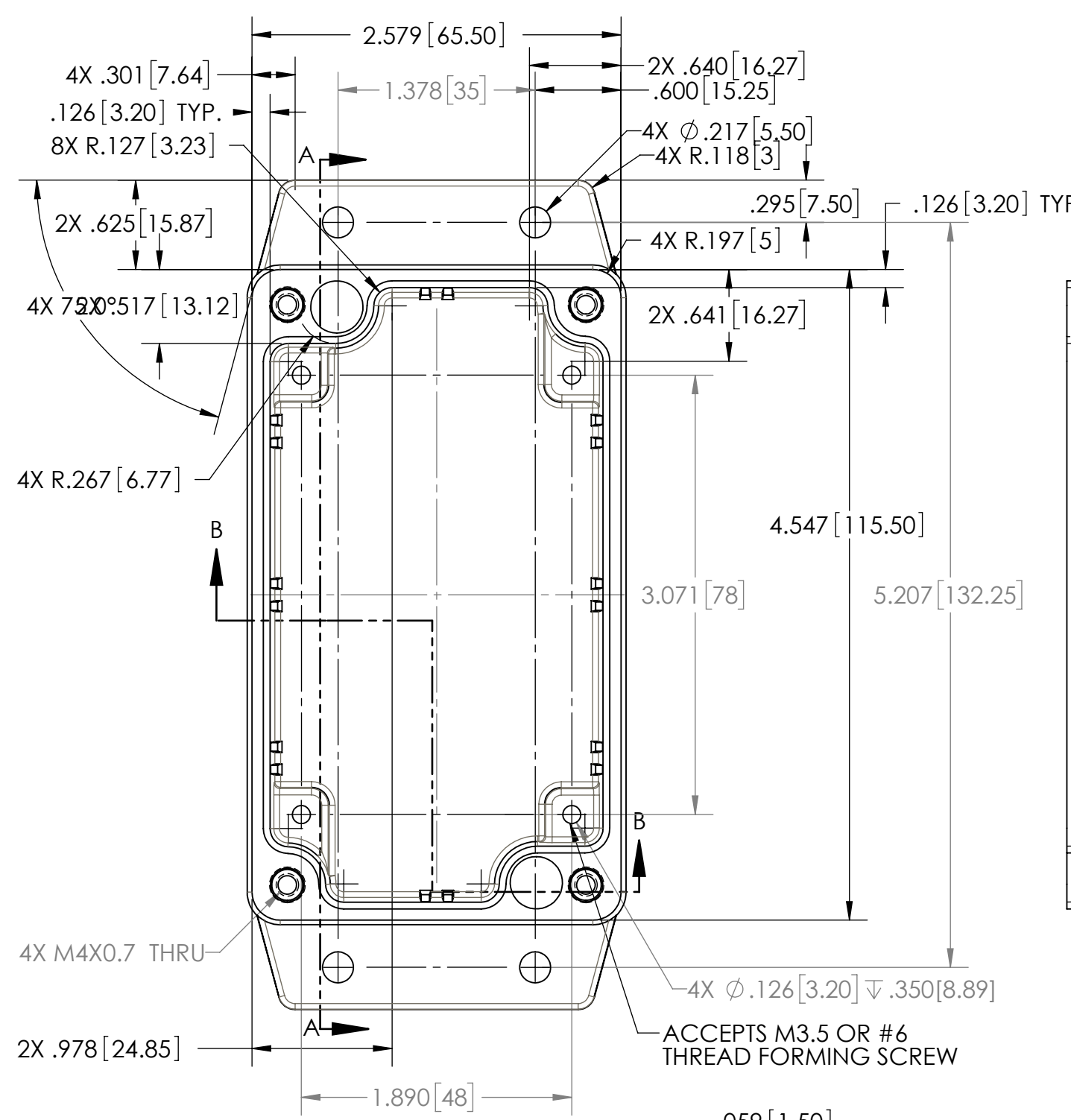
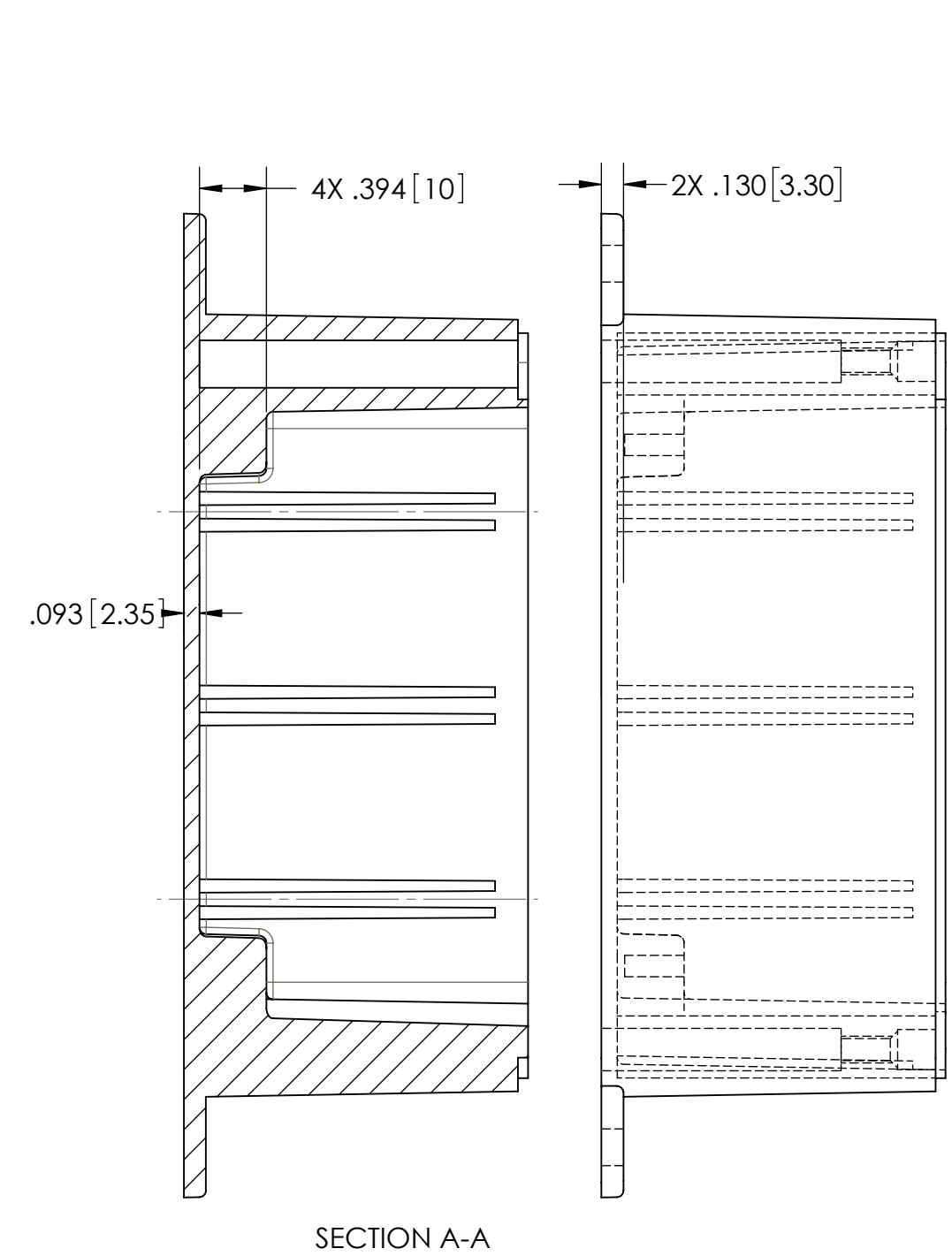


UNLESS OTHERWISE SPECIFIED: DIMENSIONS ARE IN: INCHES[mm] TOLERANCES: ANGULAR: ±2° TWO PLACE DECIMAL: ±.010 THREE PLACE DECIMAL: ±.005 PRINTED GRAPHICS: ±.010		PART NO. AS NOTED		MATERIAL AS NOTED		FLAME RATING -		SIZE C	
PROPRIETARY AND CONFIDENTIAL THE INFORMATION CONTAINED IN THIS DRAWING IS THE SOLE PROPERTY OF POLYCASE. ANY REPRODUCTION IN PART OR AS A WHOLE WITHOUT THE WRITTEN PERMISSION OF POLYCASE IS PROHIBITED. CAD FILE: AN-03F		1305 CHESTER RD. PARKWAY AVON, OHIO 44011-1083 U.S.A. PH: 1-800-248-1233 440-934-0444 FAX: 440-934-0088		DRAWN CHECKED		NAME DATE D.M.F. 11/14/2016 C.C.B. 12/27/2016		SCALE: 1:1	

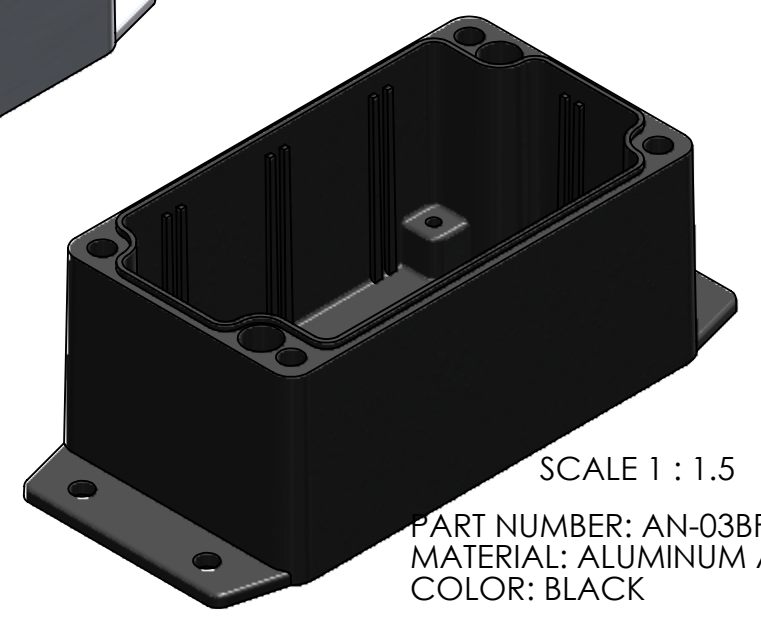
REV.	DESCRIPTION	ZONE	BY	APPR'D	DATE
REVISIONS					

		TOLERANCE CHART													
DIMENSION RANGE	0	.039	.118	.236	.394	.591	.866	1.181	1.575	2.087	2.756	3.543	4.724	6.299	7.874
	TOOL DEPENDENT	±.007	±.007	±.008	±.008	±.009	±.010	±.011	±.012	±.013	±.015	±.017	±.020	±.024	±.028
NON-TOOL DEPENDENT	±.003	±.004	±.004	±.004	±.005	±.006	±.007	±.008	±.009	±.011	±.013	±.016	±.020	±.024	±.031

F
E
D
C
B
A



PART NUMBER: AN-03BF-01
MATERIAL: ALUMINUM ADC12
COLOR: NATURAL



PART NUMBER: AN-03BF-02
MATERIAL: ALUMINUM ADC12
COLOR: BLACK

REV.	DESCRIPTION	ZONE	BY	APPR'D	DATE
REVISIONS					

UNLESS OTHERWISE SPECIFIED:
DIMENSIONS ARE IN: INCHES[mm]
TOLERANCES: ANGULAR: ±.5°
TWO PLACE DECIMAL: ±.
THREE PLACE DECIMAL: ±.
PRINTED GRAPHICS: ±.010

PROPRIETARY AND CONFIDENTIAL
THE INFORMATION CONTAINED IN THIS
DRAWING IS THE SOLE PROPERTY OF
POLYCASE. ANY REPRODUCTION IN PART
OR AS A WHOLE WITHOUT THE WRITTEN
PERMISSION OF POLYCASE IS PROHIBITED.
CAD FILE: AN-03BF

PART NO.
AS NOTED

MATERIAL
AS NOTED

FLAME RATING
-

SIZE
C

SCALE: 1:1

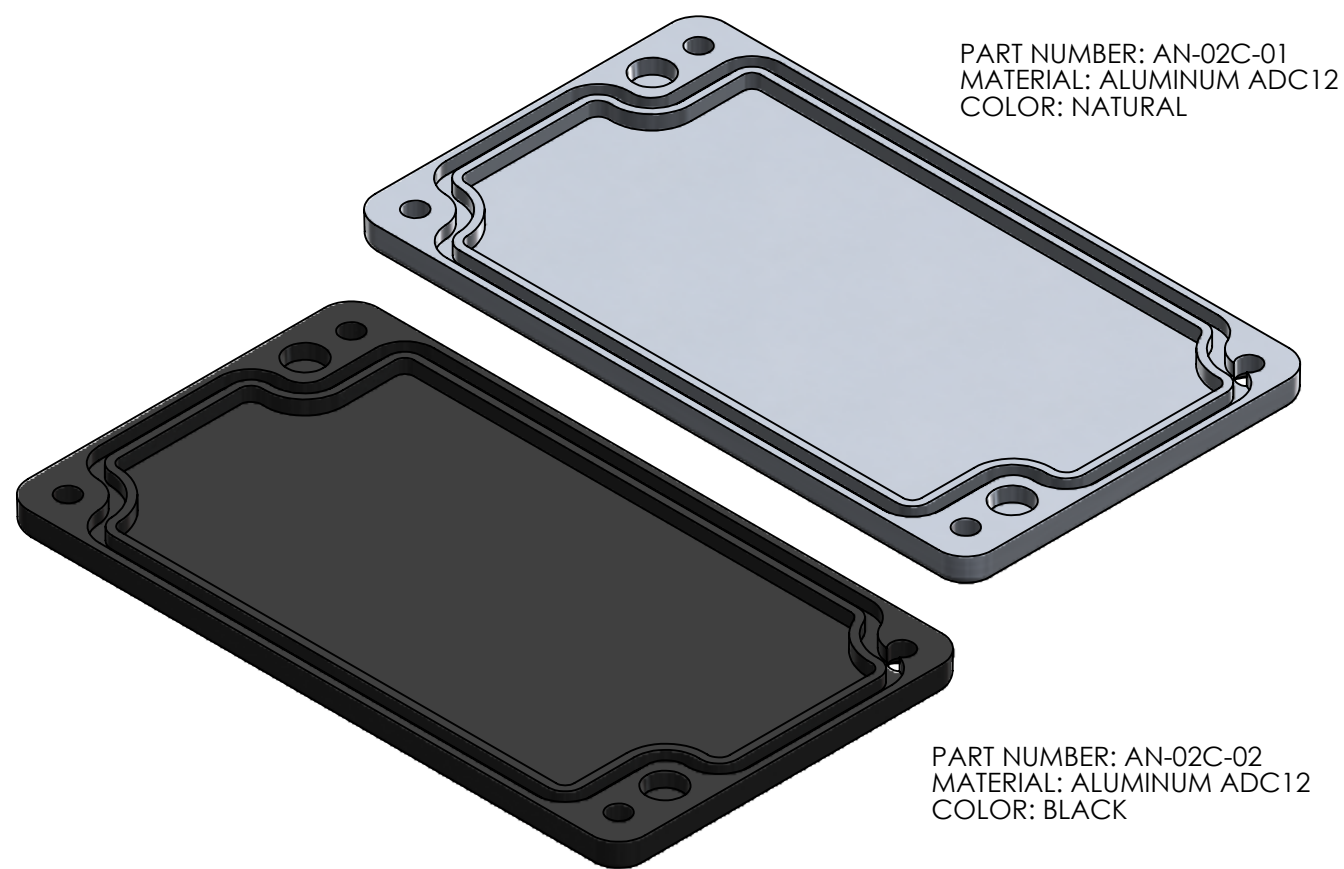
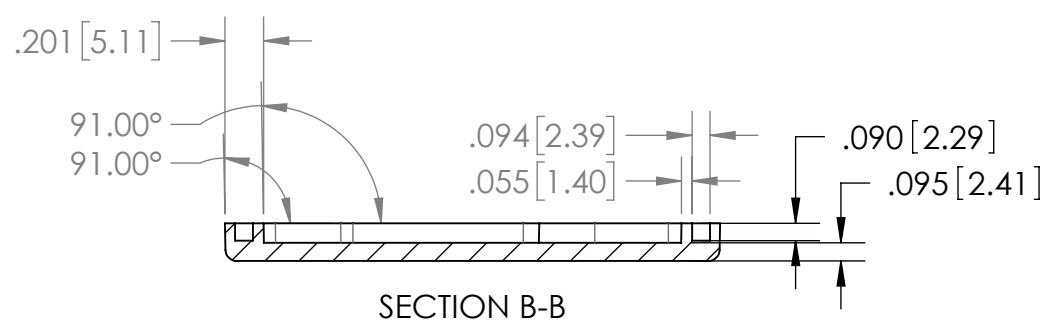
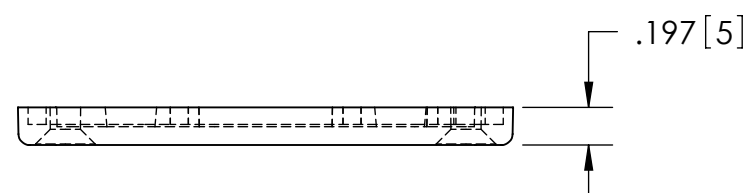
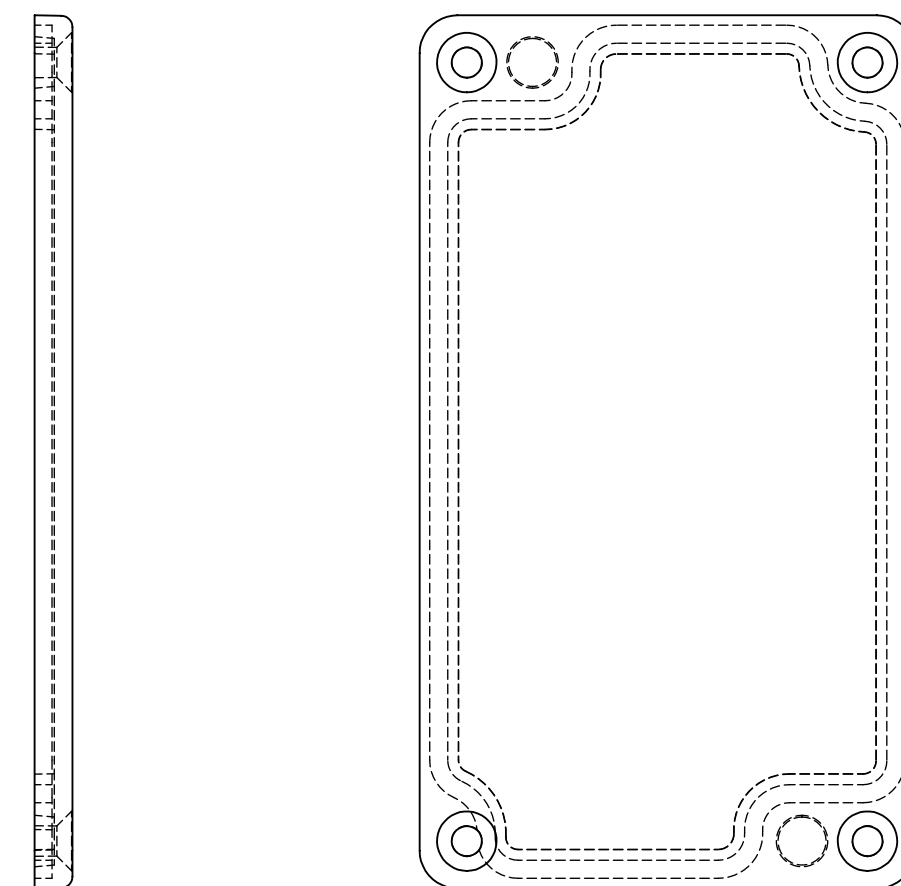
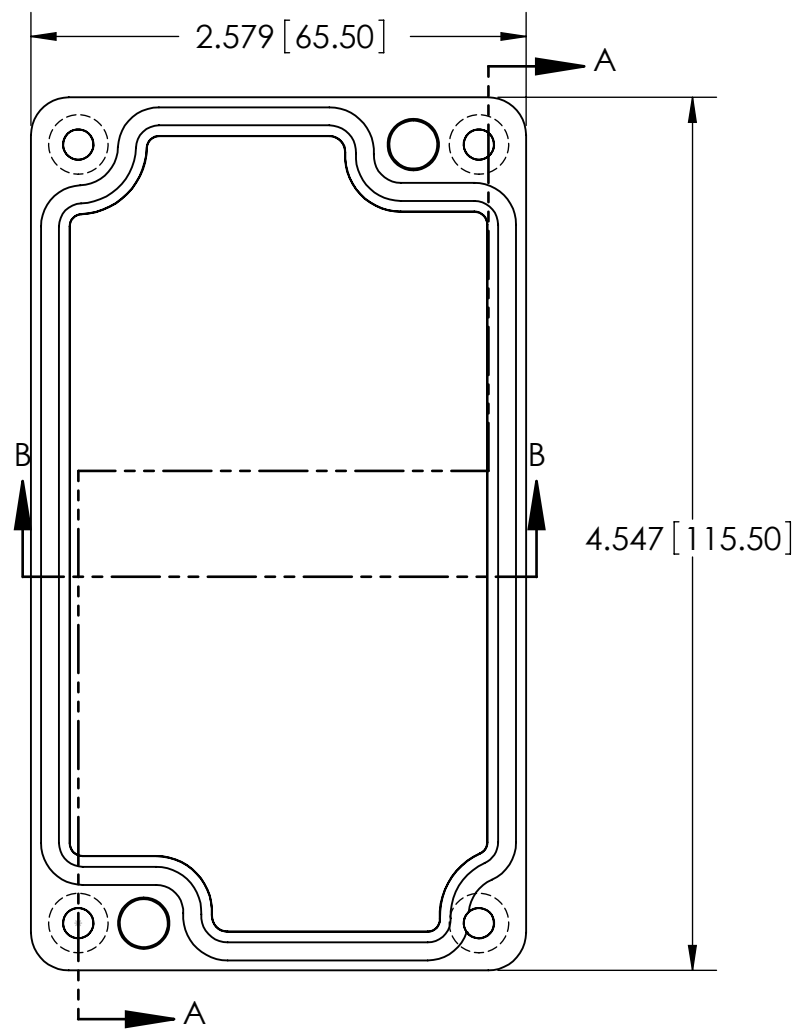
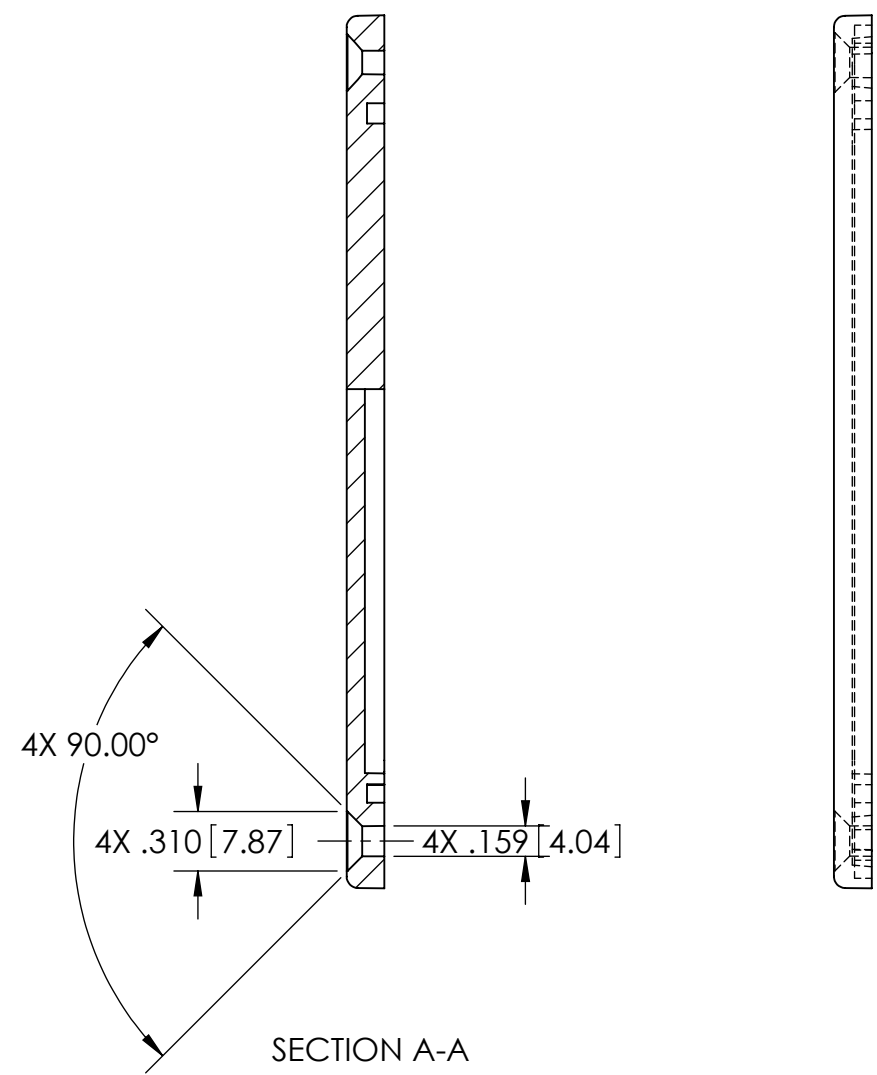
SHEET 1 OF 1

1305 CHESTER RD. PARKWAY AVON, OHIO 44011-1083 U.S.A.
PH: 1-800-248-1233, 440-934-0444 FAX: 440-934-0088

NAME	DATE
D.M.F.	11/15/2016
C.C.B.	12/27/2016

8 7 6 5 4 3 2 1

		TOLERANCE CHART																			
DIMENSION RANGE	0	.039	.118	.236	.394	.591	.866	1.181	1.575	2.087	2.756	3.543	4.724	6.299	7.874	9.843	12.402	15.748	19.685	24.803	31.496
	TOOL DEPENDENT	±.007	±.007	±.008	±.008	±.009	±.010	±.011	±.012	±.013	±.015	±.017	±.020	±.024	±.028	±.035	.043	.051	.063	.079	.098
NON-TOOL DEPENDENT	±.003	±.004	±.004	±.004	±.005	±.006	±.007	±.008	±.009	±.011	±.013	±.016	±.020	±.024	±.031	.039	.047	.059	.075	.094	.114



REV.	DESCRIPTION	ZONE	BY	APPR'D	DATE
REVISIONS					

UNLESS OTHERWISE SPECIFIED:
DIMENSIONS ARE IN: INCHES[mm]
TOLERANCES: ANGULAR: ±.5°
TWO PLACE DECIMAL: ±
THREE PLACE DECIMAL: ±
PRINTED GRAPHICS: ±.010

PROPRIETARY AND CONFIDENTIAL
THE INFORMATION CONTAINED IN THIS
DRAWING IS THE SOLE PROPERTY OF
POLYCASE. ANY REPRODUCTION IN PART
OR AS A WHOLE WITHOUT THE WRITTEN
PERMISSION OF POLYCASE IS PROHIBITED.
CAD FILE: AN-02C

PART NO.
AS NOTED

MATERIAL
AS NOTED

FLAME RATING
-

SIZE
C

SCALE: 1:1

COVER

REV
-

NAME: D.M.F. DATE: 11/15/2016
DRAWN: C.C.B. CHECKED: 12/27/2016

1305 CHESTER RD. PARKWAY AVON, OHIO 44011-1083 U.S.A.
PH: 1-800-248-1233 440-934-0444 FAX: 440-934-0088

SHEET 1 OF 1