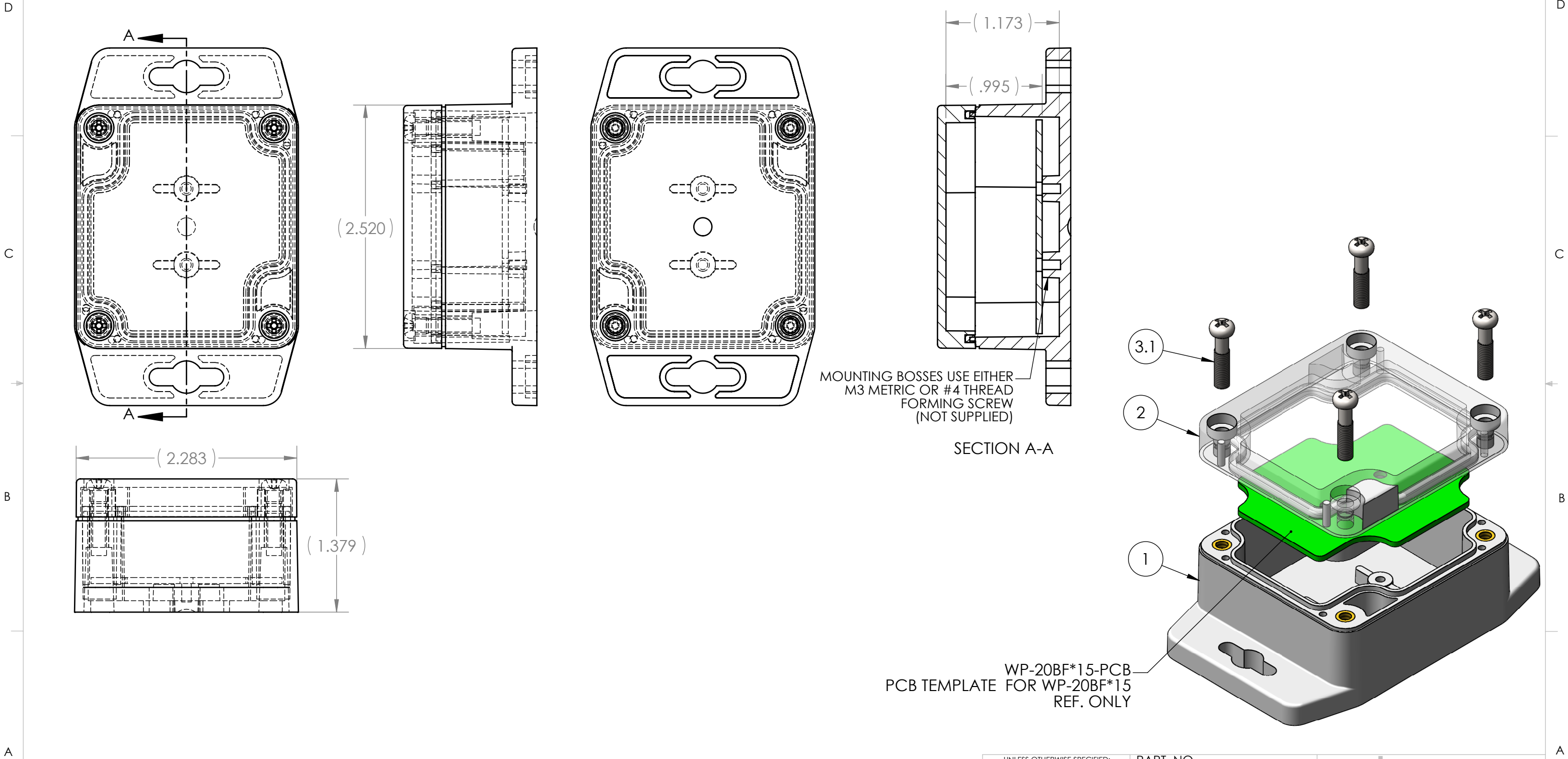



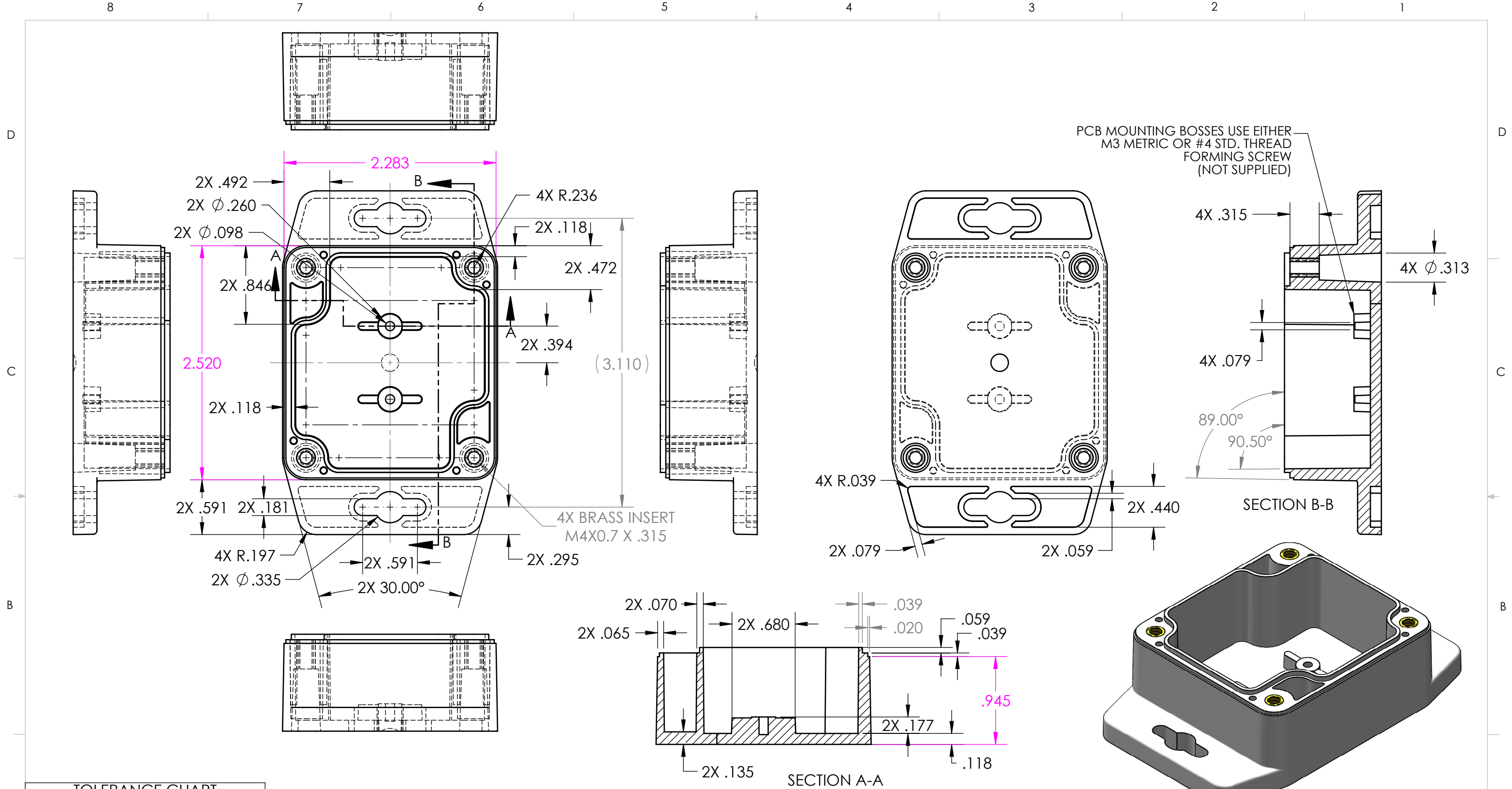
ITEM NO.	PART NUMBER	Rev.	DESCRIPTION	Material	Color	Flame Rating	QTY.
1	WP-20BF*15	-	WP BASE, W/PCB BOSSES, MTG FLANGES	POLYCARBONATE	LIGHT GRAY	UL94-HB (UL FILE E41613)	1
2	WC-20C*08	-	WC COVER, W/GASKET	POLYCARBONATE	CLEAR	UL94-HB (UL FILE E41613)	1
3	SCREWS-SSM4-20-4	-	ASSEMBLY SCREWS, 4 PACK				1
3.1	SCREWS-SSM4-20	-	M4X0.7 X 20mm OAL, PHILLIPS DRIVE MACHINE SCREW	STAINLESS STEEL			4



- NOTES:
- ENCLOSURE DESIGNED TO NEMA 1, 2, 4, 4X, 12, 13.
  - UL LISTED TO UL508-4X SPECIFICATIONS (UL FILE E194432).
  - SERVICE TEMPERATURE: -40°C TO 120°C

REV.	DESCRIPTION	ZONE	BY	APPR'D	DATE
	REVISIONS				

UNLESS OTHERWISE SPECIFIED: DIMENSIONS ARE IN: INCHES[mm] TOLERANCES: ANGULAR: ±2° TWO PLACE DECIMAL: ±.030 THREE PLACE DECIMAL: ±.015 PRINTED GRAPHICS: ±.010	PART NO. WC-20F*1508		polycase  1305 CHESTER IND. PARKWAY AVON, OHIO 44011-1083 U.S.A. PH#: 1-800-248-1233, 440-934-0444 FAX#: 440-934-0088		
	MATERIAL				
PROPRIETARY AND CONFIDENTIAL THE INFORMATION CONTAINED IN THIS DRAWING IS THE SOLE PROPERTY OF POLYCASE. ANY REPRODUCTION IN PART OR AS A WHOLE WITHOUT THE WRITTEN PERMISSION OF POLYCASE IS PROHIBITED.  CAD FILE: WC-20F+1508	FLAME RATING UL94-HB		SIZE <b>B</b>	WC UNIT, W/MTG BOSSES, W/GASKET, LIGHT GRAY BASE, CLEAR COVER	REV  -
		NAME	DATE		
	DRAWN	D.M.F.	8/12/2011		
	CHECKED	C.C.B.	8/12/2011	SCALE: 1:1	



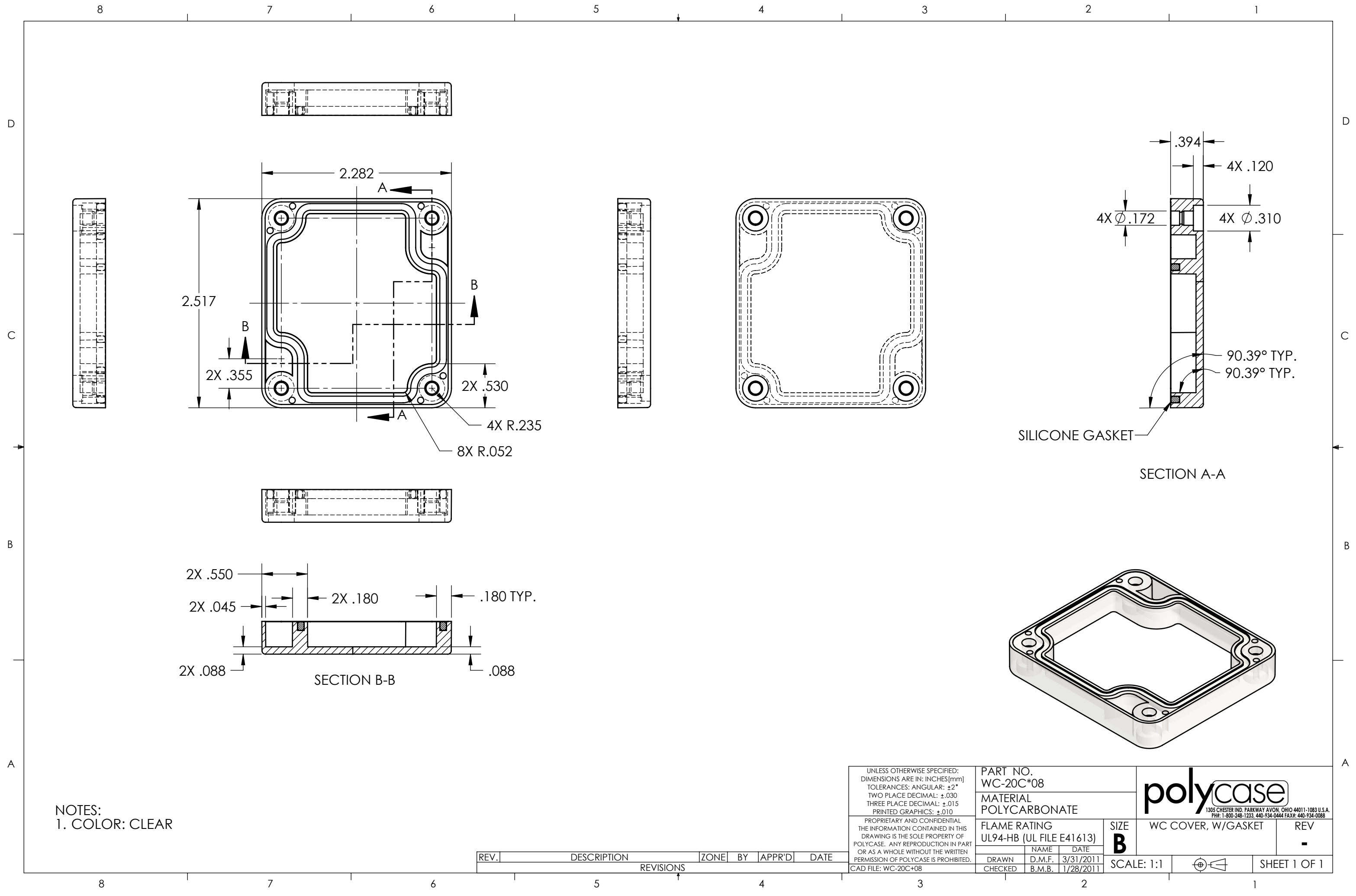
TOLERANCE CHART				
DIMENSION RANGE		6 SIGMA		
		TOOL DEPENDENT	NON-TOOL DEPENDENT	
.000	.040	±.0018	±.0042	
.040	.120	±.0024	±.0054	
.120	.240	±.0030	±.0060	
.240	.390	±.0036	±.0066	
.390	.590	±.0042	±.0072	
.590	.870	±.0048	±.0072	
.870	1.180	±.0054	±.0078	
1.180	1.570	±.0060	±.0084	
1.570	2.090	±.0072	±.0096	
2.090	2.760	±.0078	±.0108	
2.760	3.540	±.0090	±.0120	

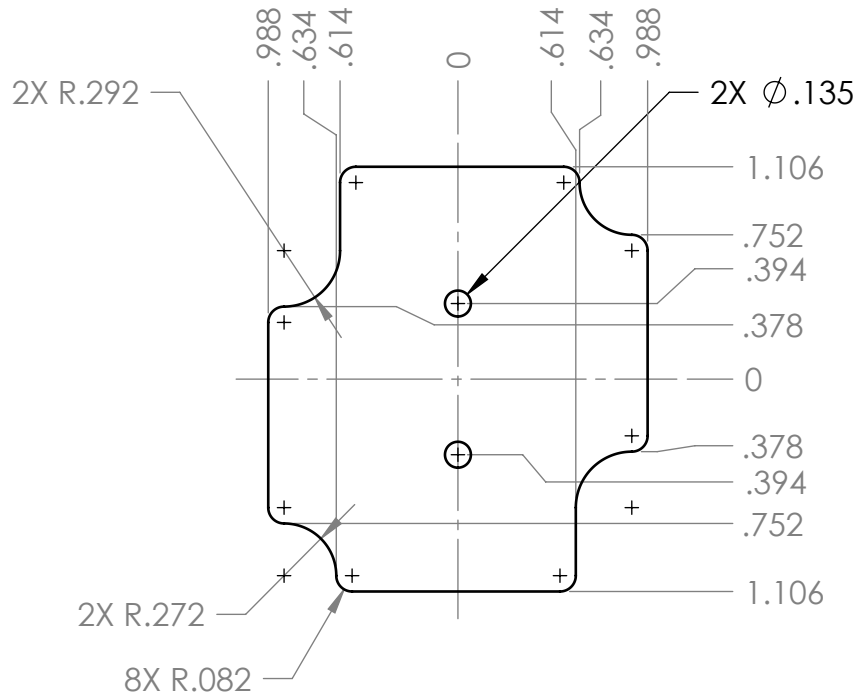
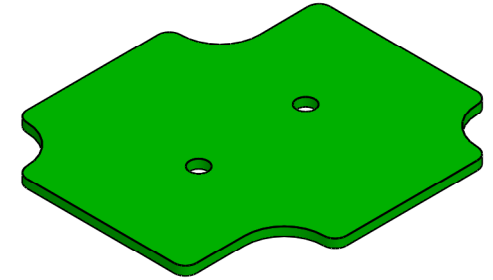
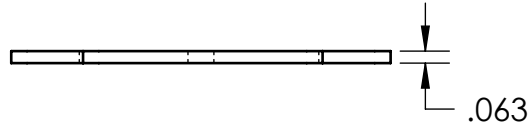
REV.	DESCRIPTION	ZONE	BY	APPR'D	DATE
REVISIONS					

NOTES:  
1. COLOR: LIGHT GRAY  
2. SEE SOLID MODEL FOR COMPLETE PART DEFINITION.

UNLESS OTHERWISE SPECIFIED: DIMENSIONS ARE IN: INCHES [mm] TOLERANCES: ANGULAR: ±2° TWO PLACE DECIMAL: ±.030 THREE PLACE DECIMAL: ±.015 PRINTED GRAPHICS: ±.010  PROPRIETARY AND CONFIDENTIAL THE INFORMATION CONTAINED IN THIS DRAWING IS THE SOLE PROPERTY OF POLYCASE. ANY REPRODUCTION IN PART OR AS A WHOLE WITHOUT THE WRITTEN PERMISSION OF POLYCASE IS PROHIBITED. CAD FILE: WP-20BF+15	PART NO. WP-20BF*15		MATERIAL POLYCARBONATE	
	FLAME RATING UL94-HB (UL FILE E41613)		SIZE <b>B</b>	WP BASE, W/PCB BOSSES, MTG FLANGES
DRAWN CHECKED		NAME D.M.F. C.C.B.	DATE 8/12/2011 8/15/2011	REV -
SCALE: 1:1			SHEET 1 OF 1	

**polycase**  
1305 CHESTER IND. PARKWAY AVON, OHIO 44011-1083 U.S.A.  
PH#: 1-800-248-1233, 440-934-0444 FAX#: 440-934-0088





# NOTES:

1. INCLUDES .030 CLEARANCE FROM INTERIOR OF WP-20BF\*15.

UNLESS OTHERWISE SPECIFIED:  
 DIMENSIONS ARE IN: INCHES[mm]  
 TOLERANCES: ANGULAR: ±2°  
 TWO PLACE DECIMAL: ±.010  
 THREE PLACE DECIMAL: ±.005  
 PRINTED GRAPHICS: ±.010

PROPRIETARY AND CONFIDENTIAL  
 THE INFORMATION CONTAINED IN THIS  
 DRAWING IS THE SOLE PROPERTY OF  
 POLYCASE. ANY REPRODUCTION IN PART  
 OR AS A WHOLE WITHOUT THE WRITTEN  
 PERMISSION OF POLYCASE IS PROHIBITED.  
 CAD FILE: WP-20BF\*15-PCB

PART NO.  
 WP-20BF\*15-PCB  
 MATERIAL

FLAME RATING

SIZE  
**A**

**polycase**  
 1305 CHESTER IND. PARKWAY AVON, OHIO 44011-1083 U.S.A.  
 PH# 1-800-248-1233, 440-934-0444 FAX# 440-934-0088

PCB TEMPLATE FOR WP-  
 20BF\*15

REV  
 -

	NAME	DATE
DRAWN	D.M.F.	8/12/2011
CHECKED	C.C.B.	8/16/2011

SCALE: 1:1



SHEET 1 OF 1

REV.	DESCRIPTION	ZONE	BY	APPR'D	DATE
	REVISIONS				

5

4

3

2

1

A

B

C

D

Enable 3D View