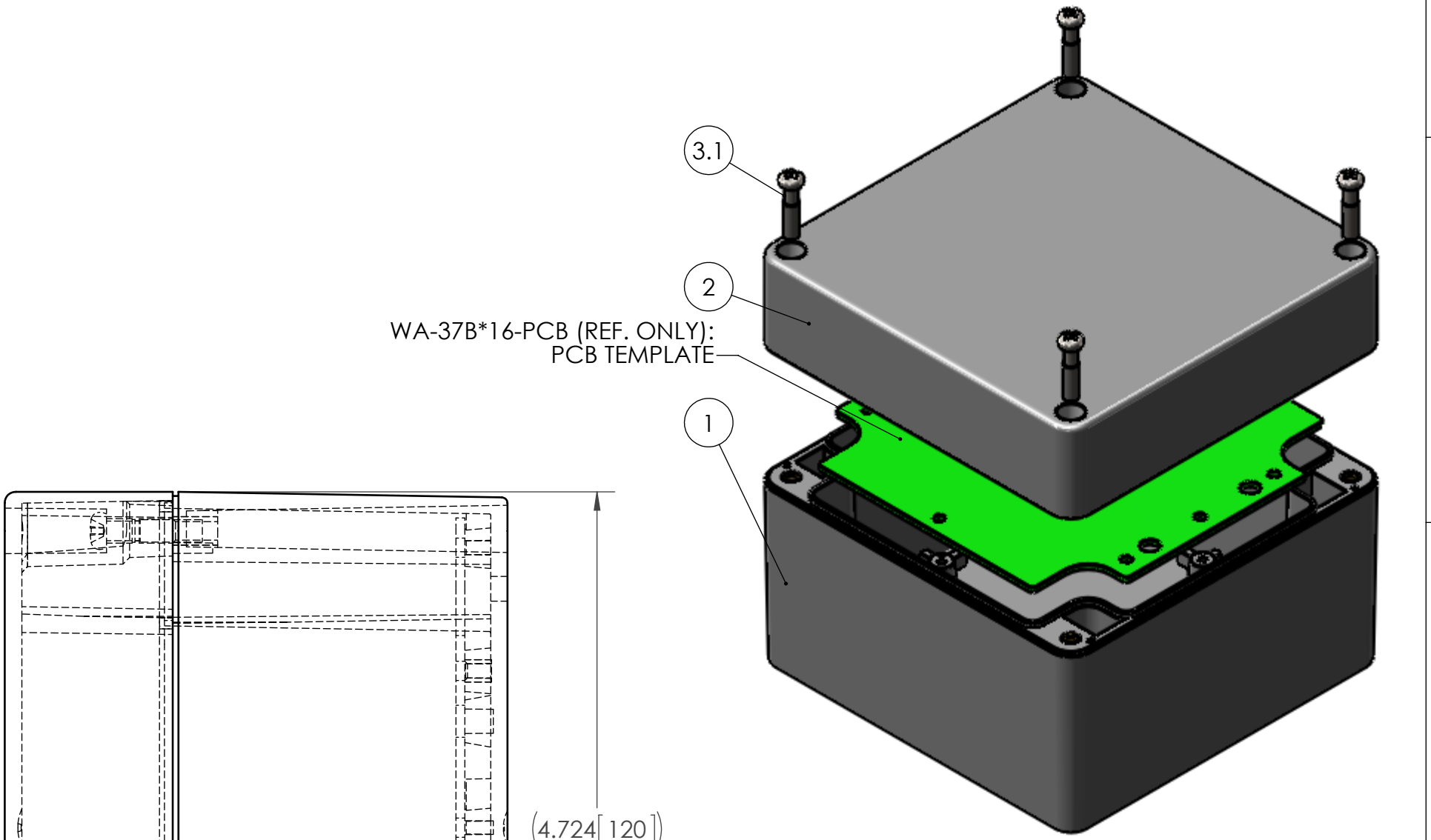

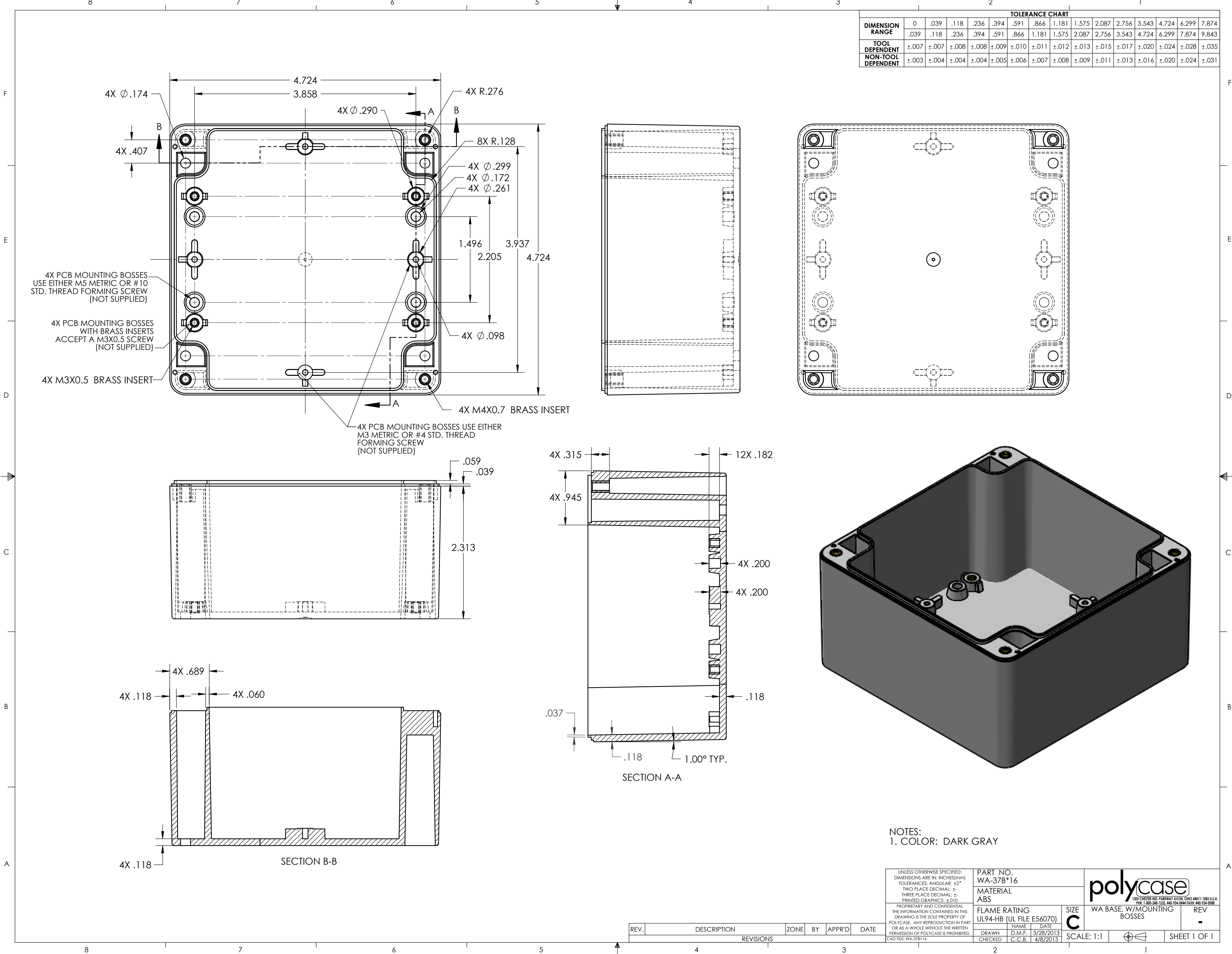


ITEM NO.	PART NUMBER	Rev.	DESCRIPTION	MATERIAL	FlameRating	Color	QTY.
1	WA-37B*16	-	WA BASE, W/MOUNTING BOSSES	ABS	UL94-HB (UL FILE E56070)	DARK GRAY	1
2	WA-36C*16	-	WA COVER, W/GASKET	ABS	UL94-HB (UL FILE E56070)	DARK GRAY	1
3	SCREWS-SSM4-20-4	-	ASSEMBLY SCREWS, 4 PACK				1
3.1	SCREWS-SSM4-20	-	M4X0.7 X 20mm OAL, PHILLIPS DRIVE MACHINE SCREW	STAINLESS STEEL			4



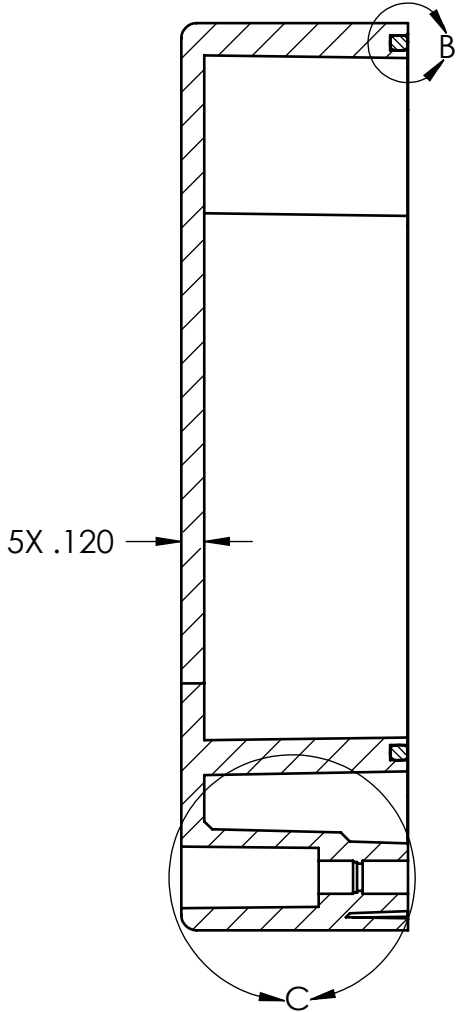
- NOTES:
1. SERVICE TEMPERATURE RANGE: -40°C TO 80°C
2. DESIGNED TO NEMA 1, 2, 4, 4X, 12, 13
3. MOUNTING FLANGE KITS ARE AVAILABLE FROM POLYCASE.
4. UL LISTED TO UL508-4X SPECIFICATIONS (UL FILE #E194432).

<div>UNLESS OTHERWISE SPECIFIED: DIMENSIONS ARE IN: INCHES[mm] TOLERANCES: ANGULAR: ±2° TWO PLACE DECIMAL: ±.030 THREE PLACE DECIMAL: ±.015 PRINTED GRAPHICS: ±.010</div> <div>PROPRIETARY AND CONFIDENTIAL THE INFORMATION CONTAINED IN THIS DRAWING IS THE SOLE PROPERTY OF POLYCASE. ANY REPRODUCTION IN PART OR AS A WHOLE WITHOUT THE WRITTEN PERMISSION OF POLYCASE IS PROHIBITED.</div> <div>CAD FILE: WA-37*16</div>						PART NO. WA-37*16		<div>polycase</div> <div>1305 CHESTER RD. PARKWAY AVON, OHIO 44011-1083 U.S.A. PH: 1-800-248-1233, 440-934-0444 FAX: 440-934-0088</div>		Product Assembly Drawing		REV -		
						MATERIAL								
						FLAME RATING UL94-HB		SIZE C	SCALE: 1:1				SHEET 1 OF 1	
						<table><tr><td>DRAWN</td><td>NAME</td><td>DATE</td></tr><tr><td>CHECKED</td><td>D.M.F.</td><td>3/27/2013</td></tr><tr><td></td><td>C.C.B.</td><td>4/9/2013</td></tr></table>								
DRAWN	NAME	DATE												
CHECKED	D.M.F.	3/27/2013												
	C.C.B.	4/9/2013												
REV.	DESCRIPTION	ZONE	BY	APPR'D	DATE									
REVISIONS														

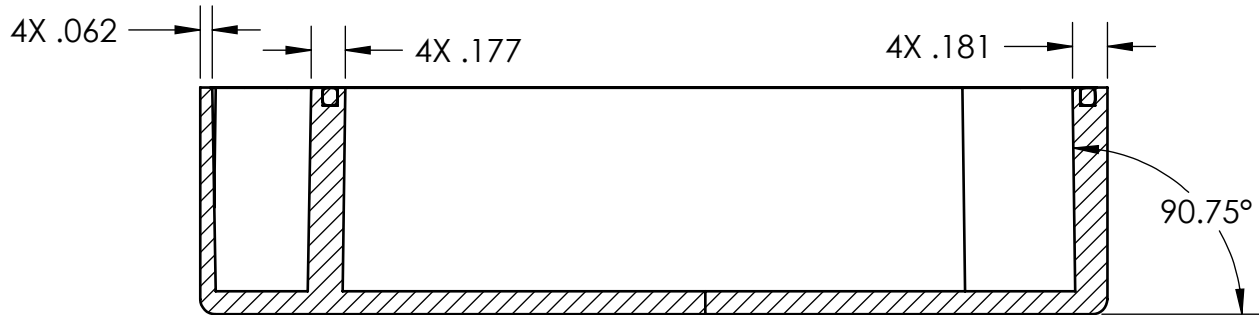
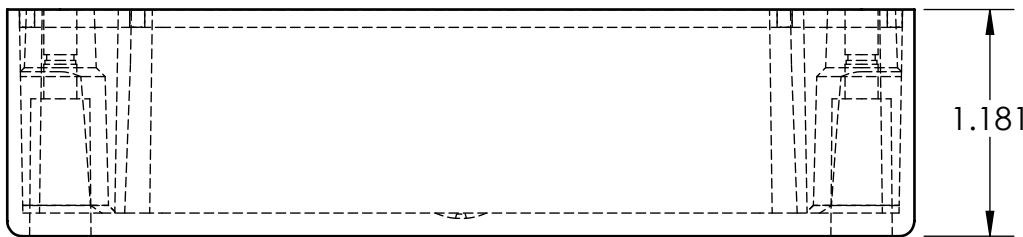
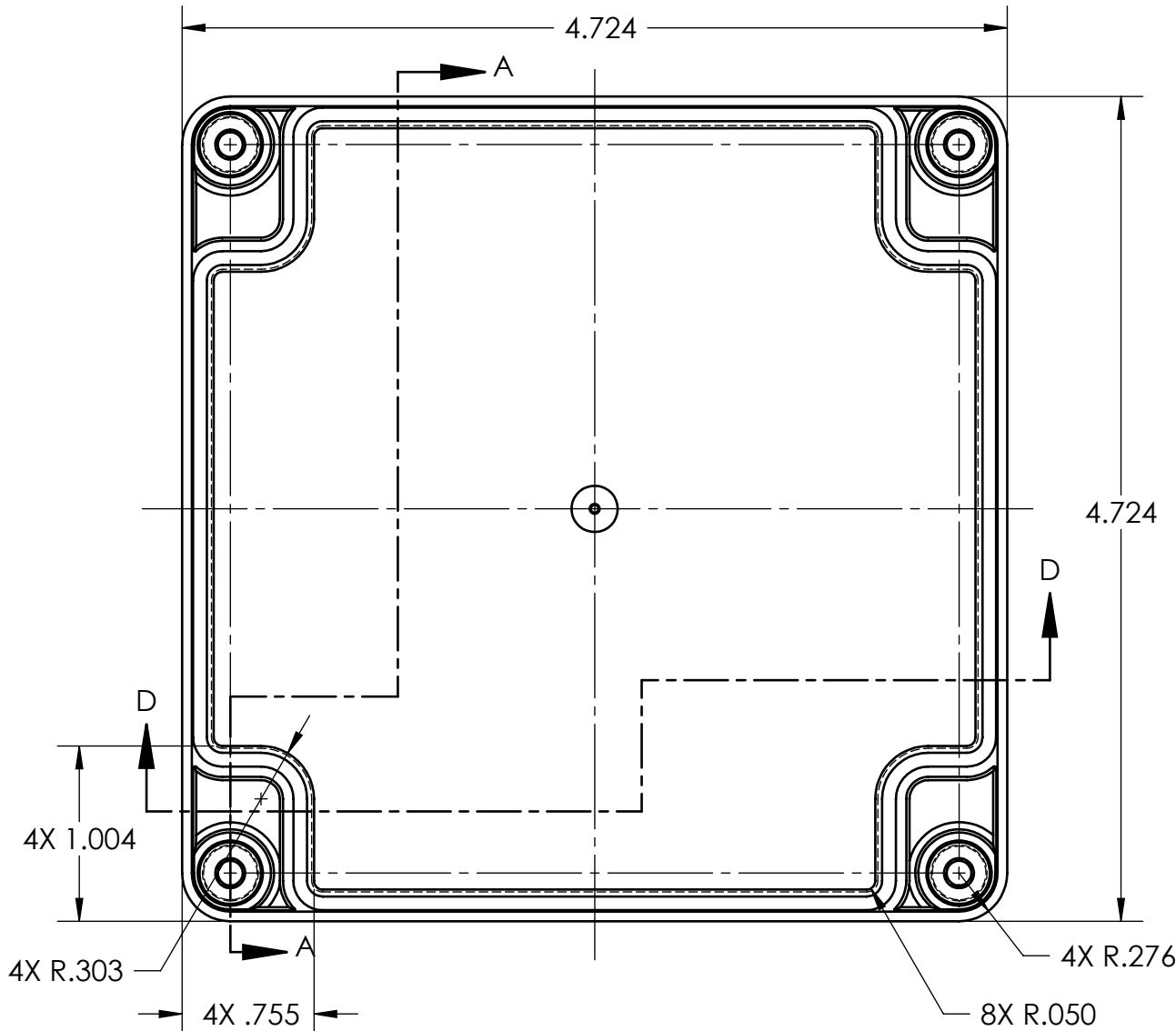


TOLERANCE CHART																			
DIMENSION RANGE	0	.039	.118	.236	.394	.591	.866	1.181	1.575	2.087	2.756	3.543	4.724	6.299	7.874	9.843	12.402	15.748	19.685
TOOL DEPENDENT	.039	.118	.236	.394	.591	.866	1.181	1.575	2.087	2.756	3.543	4.724	6.299	7.874	9.843	12.402	15.748	19.685	24.803
NON-TOOL DEPENDENT	±.007	±.007	±.008	±.008	±.009	±.010	±.011	±.012	±.013	±.015	±.017	±.020	±.024	±.028	±.035	.043	.051	.063	.079
DEPENDENT	±.003	±.004	±.004	±.004	±.005	±.006	±.007	±.008	±.009	±.011	±.013	±.016	±.020	±.024	±.031	.039	.047	.059	.075

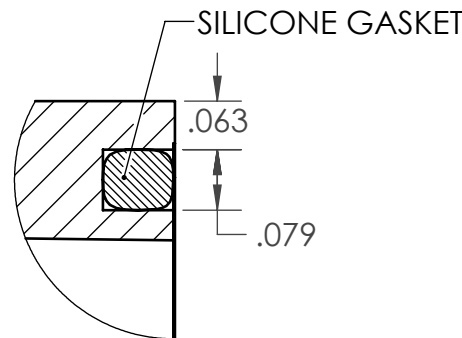
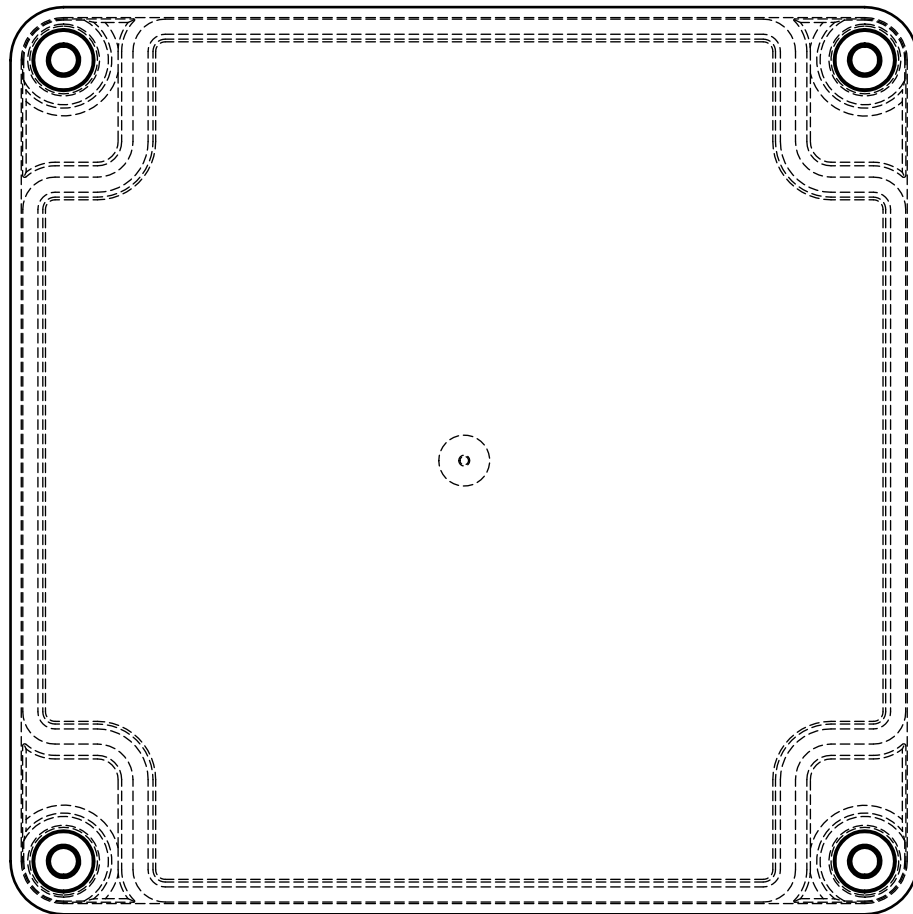
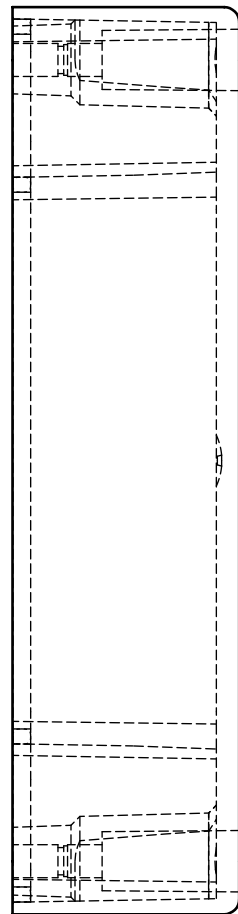
F
E
D
C
B
A



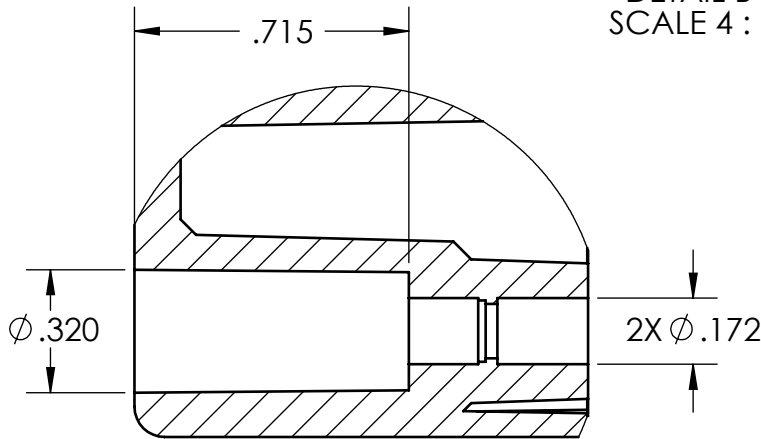
SECTION A-A



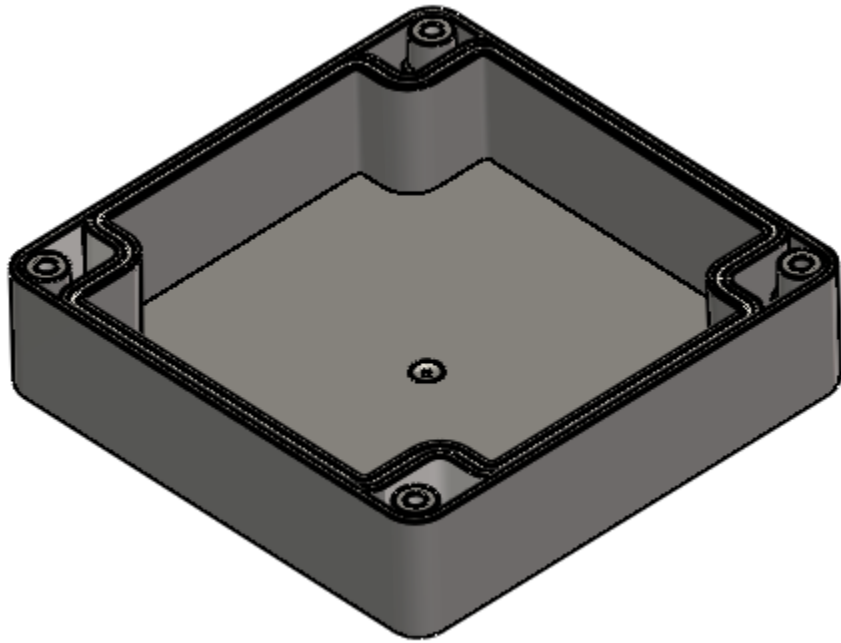
SECTION D-D



DETAIL B
SCALE 4 : 1





DETAIL C
SCALE 2 : 1
(4 PLCS.)



SCALE 1 : 1.5

NOTES:
1. COLOR: DARK GRAY

UNLESS OTHERWISE SPECIFIED: DIMENSIONS ARE IN: INCHES[mm] TOLERANCES: ANGULAR: ±2° TWO PLACE DECIMAL: ±.030 THREE PLACE DECIMAL: ±.015 PRINTED GRAPHICS: ±.010		PART NO. WA-36C*16		 <small>1305 CHESTER RD. PARKWAY AVON, OHIO 44011-1083 U.S.A. PH: 1-800-248-1233, 440-934-0444 FAX: 440-934-0088</small>	
PROPRIETARY AND CONFIDENTIAL THE INFORMATION CONTAINED IN THIS DRAWING IS THE SOLE PROPERTY OF POLYCASE. ANY REPRODUCTION IN PART OR AS A WHOLE WITHOUT THE WRITTEN PERMISSION OF POLYCASE IS PROHIBITED. CAD FILE: WA-36C*16		MATERIAL ABS			
FLAME RATING UL94-HB (UL FILE E56070)		SIZE C		WA COVER, W/GASKET REV -	
DRAWN CHECKED		NAME DATE D.M.F. C.C.B.		3/27/2013 4/9/2013	
SCALE: 1:1				SHEET 1 OF 1	

REV.	DESCRIPTION	ZONE	BY	APPR'D	DATE
REVISIONS					

8 7 6 5 4 3 2 1

