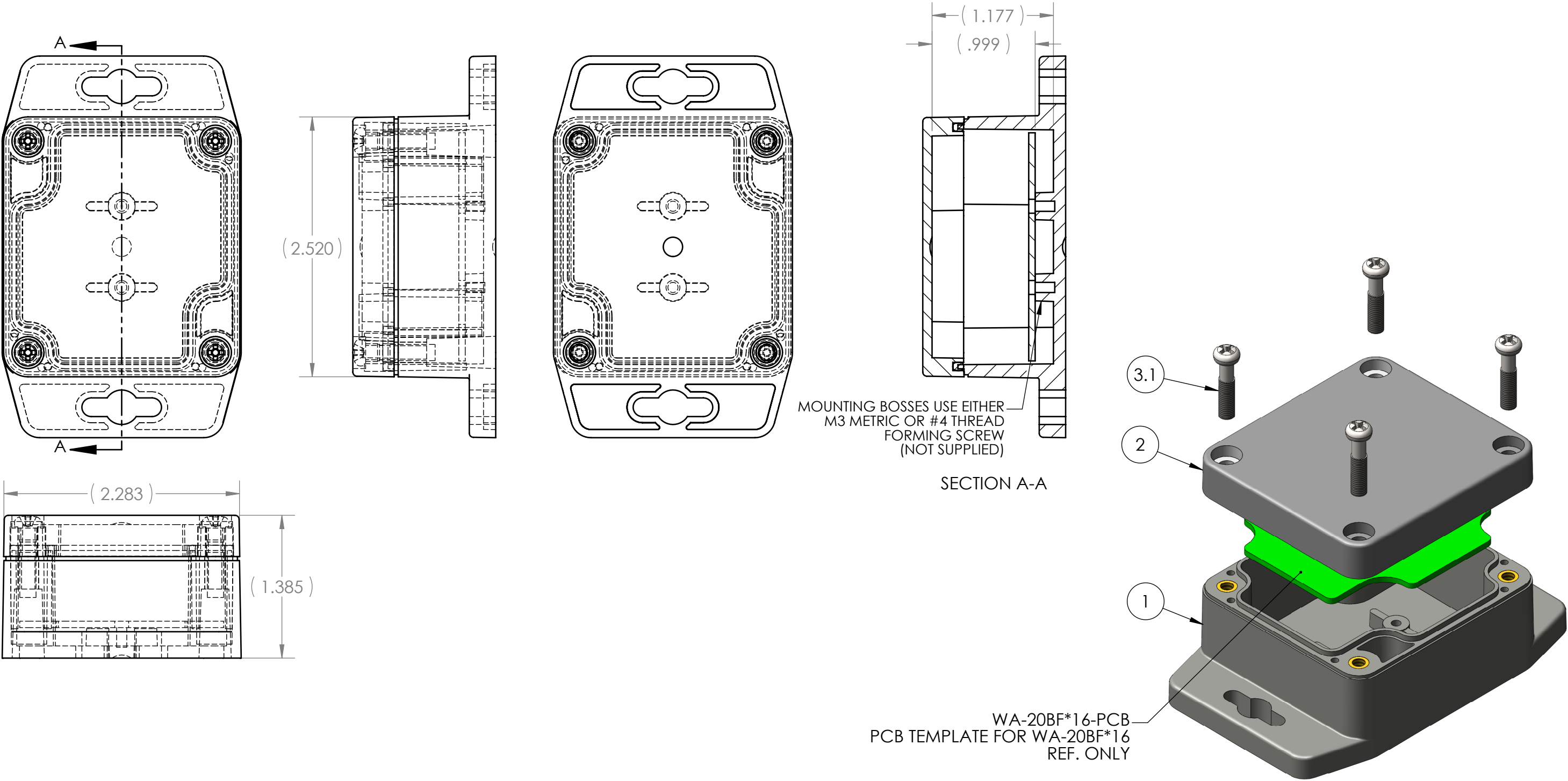



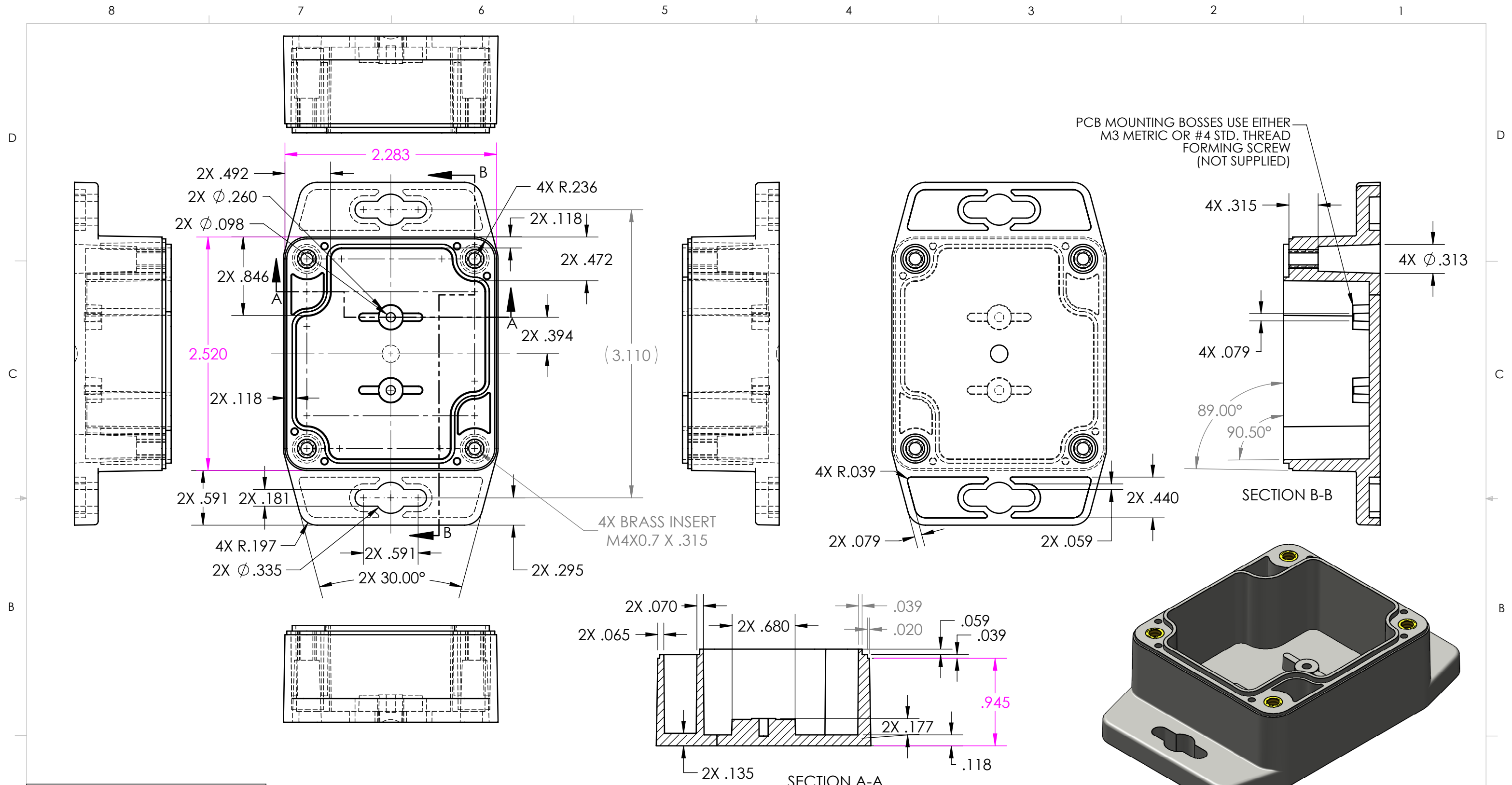
ITEM NO.	PART NUMBER	Rev.	DESCRIPTION	Material	Color	Flame Rating	QTY.
1	WA-20BF*16	-	WA BASE, W/PCB BOSSES, MTG FLANGES	ABS	DARK GRAY	UL94-HB (UL FILE E56070)	1
2	WA-20C*16	-	WA COVER, W/GASKET	ABS	DARK GRAY	UL94-HB (UL FILE E56070)	1
3	SCREWS-SSM4-20-4	-	ASSEMBLY SCREWS, 4 PACK				1
3.1	SCREWS-SSM4-20	-	M4X0.7 X 20mm OAL, PHILLIPS DRIVE MACHINE SCREW	STAINLESS STEEL			4



- NOTES:
- ENCLOSURE DESIGNED TO NEMA 1, 2, 4, 4X, 12, 13.
 - UL LISTED TO UL508-4X SPECIFICATIONS (UL FILE E194432).
 - SERVICE TEMPERATURE: -40°C TO 80°C

REV.	DESCRIPTION	ZONE	BY	APPR'D	DATE
	REVISIONS				



UNLESS OTHERWISE SPECIFIED: DIMENSIONS ARE IN: INCHES[mm] TOLERANCES: ANGULAR: ±2° TWO PLACE DECIMAL: ±.030 THREE PLACE DECIMAL: ±.015 PRINTED GRAPHICS: ±.010	PART NO. WA-20F*16		<div>polycase</div> <div>1305 CHESTER IND. PARKWAY AVON, OHIO 44011-1083 U.S.A. PHF: 1-800-248-1233, 440-934-0444 FAX/F: 440-934-0088</div>			
	MATERIAL					
PROPRIETARY AND CONFIDENTIAL THE INFORMATION CONTAINED IN THIS DRAWING IS THE SOLE PROPERTY OF POLYCASE. ANY REPRODUCTION IN PART OR AS A WHOLE WITHOUT THE WRITTEN PERMISSION OF POLYCASE IS PROHIBITED. CAD FILE: WA-20F+16	FLAME RATING UL94-HB		SIZE B	WA UNIT, W/MOUNTING BOSSES, WITH GASKET, DARK GRAY	REV -	
		NAME				DATE
	DRAWN	D.M.F.	8/12/2011	SCALE: 1:1		SHEET 1 OF 1
	CHECKED	C.C.B.	8/15/2011			

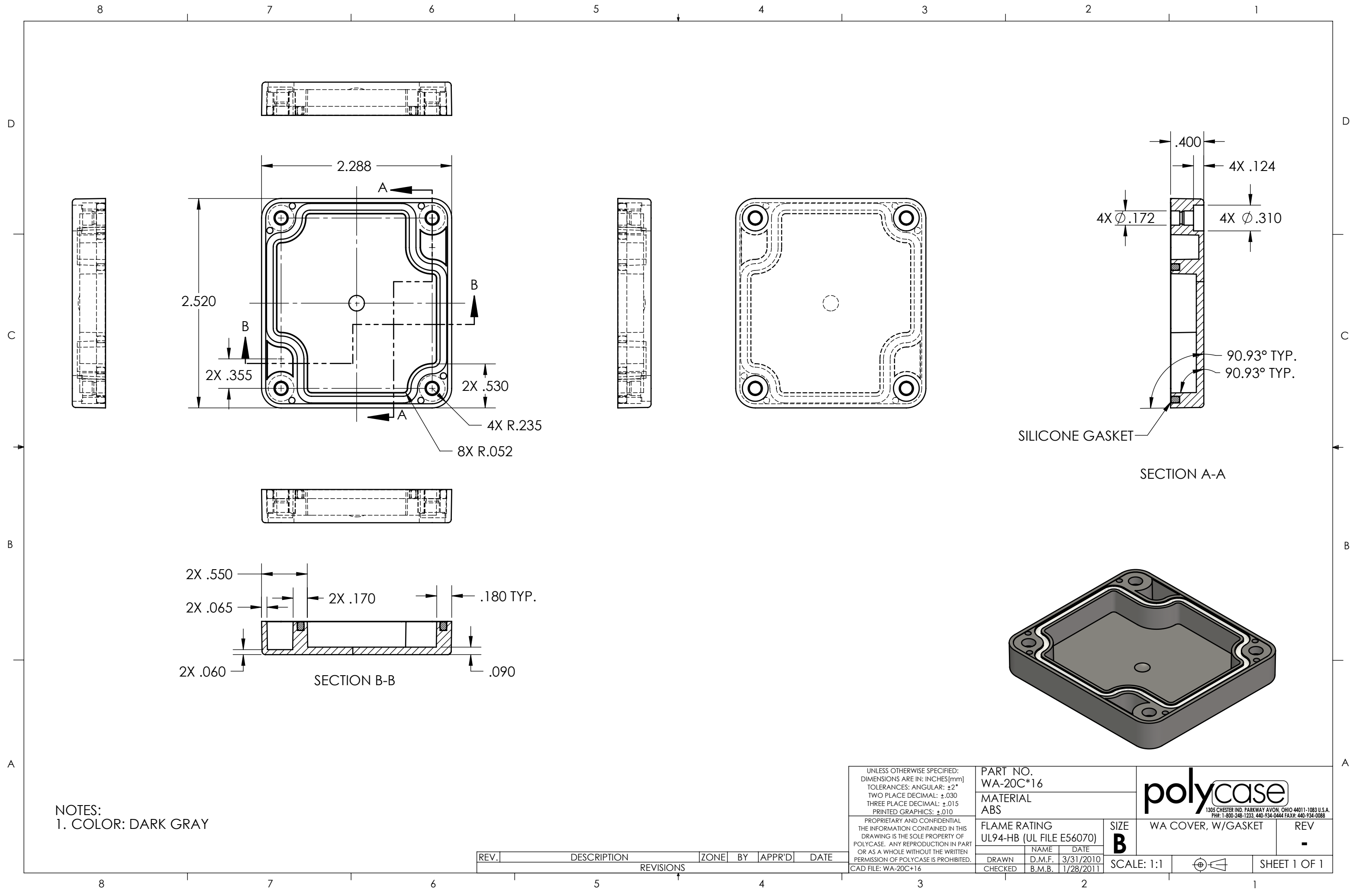


TOLERANCE CHART			
6 SIGMA			
DIMENSION RANGE	TOOL DEPENDENT		NON-TOOL DEPENDENT
.000	.040	±.0018	±.0042
.040	.120	±.0024	±.0054
.120	.240	±.0030	±.0060
.240	.390	±.0036	±.0066
.390	.590	±.0042	±.0072
.590	.870	±.0048	±.0072
.870	1.180	±.0054	±.0078
1.180	1.570	±.0060	±.0084
1.570	2.090	±.0072	±.0096
2.090	2.760	±.0078	±.0108
2.760	3.540	±.0090	±.0120

REV.	DESCRIPTION	ZONE	BY	APPR'D	DATE
REVISIONS					


- NOTES:
1. COLOR: DARK GRAY
2. SEE SOLID MODEL FOR COMPLETE PART DEFINITION.

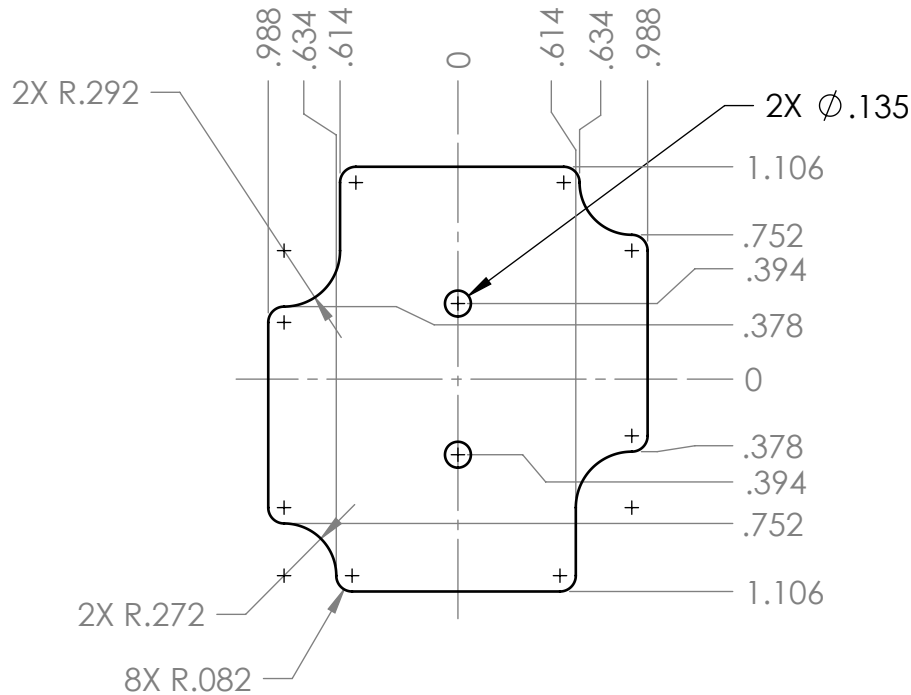
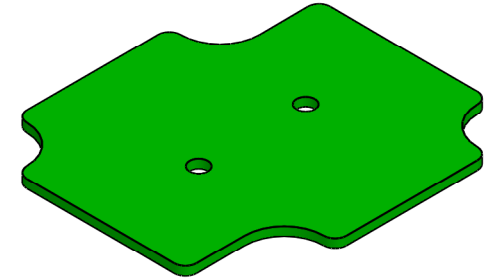
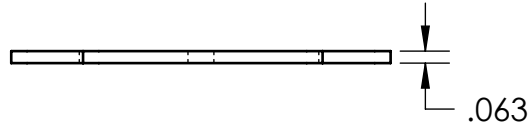
UNLESS OTHERWISE SPECIFIED: DIMENSIONS ARE IN: INCHES [mm] TOLERANCES: ANGULAR: ±2° TWO PLACE DECIMAL: ±.030 THREE PLACE DECIMAL: ±.015 PRINTED GRAPHICS: ±.010	PART NO. WA-20BF*16		<div> 1305 CHESTER IND. PARKWAY AVON, OHIO 44011-1083 U.S.A. PH#: 1-800-248-1233, 440-934-0444 FAX#: 440-934-0088</div>				
	MATERIAL ABS						
PROPRIETARY AND CONFIDENTIAL THE INFORMATION CONTAINED IN THIS DRAWING IS THE SOLE PROPERTY OF POLYCASE. ANY REPRODUCTION IN PART OR AS A WHOLE WITHOUT THE WRITTEN PERMISSION OF POLYCASE IS PROHIBITED. CAD FILE: WA-20BF+16	FLAME RATING UL94-HB (UL FILE E56070)		SIZE B	WA BASE, W/PCB BOSSES, MTG FLANGES	REV -		
		NAME				DATE	
		DRAWN	D.M.F.	8/12/2011	SCALE: 1:1		SHEET 1 OF 1
		CHECKED	C.C.B.	8/15/2011			



NOTES:
1. COLOR: DARK GRAY

REV.	DESCRIPTION	ZONE	BY	APPR'D	DATE
REVISIONS					

UNLESS OTHERWISE SPECIFIED: DIMENSIONS ARE IN: INCHES[mm] TOLERANCES: ANGULAR: ±2° TWO PLACE DECIMAL: ±.030 THREE PLACE DECIMAL: ±.015 PRINTED GRAPHICS: ±.010		PART NO. WA-20C*16		<div><div>polycase</div><div>1305 CHESTER IND. PARKWAY AVON, OHIO 44011-1083 U.S.A. PH#: 1-800-248-1233, 440-934-0444 FAX#: 440-934-0088</div></div>				
		MATERIAL ABS						
PROPRIETARY AND CONFIDENTIAL THE INFORMATION CONTAINED IN THIS DRAWING IS THE SOLE PROPERTY OF POLYCASE. ANY REPRODUCTION IN PART OR AS A WHOLE WITHOUT THE WRITTEN PERMISSION OF POLYCASE IS PROHIBITED. CAD FILE: WA-20C+16		FLAME RATING UL94-HB (UL FILE E56070)		SIZE B	WA COVER, W/GASKET		REV -	
			NAME DATE					
		DRAWN CHECKED	D.M.F. B.M.B.	3/31/2010 1/28/2011	SCALE: 1:1			SHEET 1 OF 1



NOTES:

1. INCLUDES .030 CLEARANCE FROM INTERIOR OF WA-20BF*16

<div>UNLESS OTHERWISE SPECIFIED: DIMENSIONS ARE IN: INCHES[mm] TOLERANCES: ANGULAR: ±2° TWO PLACE DECIMAL: ±.010 THREE PLACE DECIMAL: ±.005 PRINTED GRAPHICS: ±.010</div> <div>PROPRIETARY AND CONFIDENTIAL THE INFORMATION CONTAINED IN THIS DRAWING IS THE SOLE PROPERTY OF POLYCASE. ANY REPRODUCTION IN PART OR AS A WHOLE WITHOUT THE WRITTEN PERMISSION OF POLYCASE IS PROHIBITED. CAD FILE: WA-20BF+16-PCB</div>						PART NO. WA-20BF*16-PCB		<div><div>polycase</div><div>1305 CHESTER IND. PARKWAY AVON, OHIO 44011-1083 U.S.A. PH#: 1-800-248-1233, 440-934-0444 FAX#: 440-934-0088</div></div>						
						MATERIAL								
						FLAME RATING		SIZE A	PCB TEMPLATE FOR WA-20BF*16		REV -			
						DRAWN	D.M.F.	8/12/2011	SCALE: 1:1				SHEET 1 OF 1	
						CHECKED	C.C.B.	8/16/2011						
REV.	DESCRIPTION				ZONE	BY	APPR'D	DATE						
REVISIONS														

5

4

3

2

1

Enable 3D View