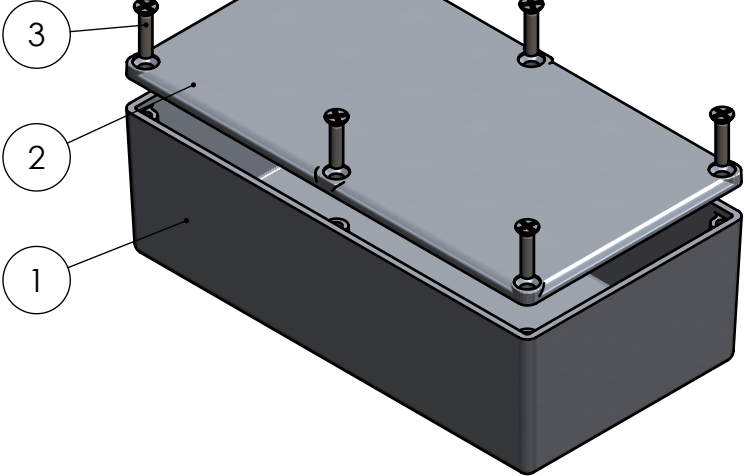


BOM Table						
ITEM NO.	PART NUMBER	Rev.	Description	Material	Color	QTY.
1	AL-76BP-01	-	Die Cast Aluminum Base	ALUMINUM ADC12	NATURAL	1
2	AL-76C-01	-	Die Cast Aluminum Cover	ALUMINUM ADC12	NATURAL	1
3	SCREWS-045		#6-32 X .625 TRILOBE, CROSS, FHMS	ZINC STEEL		6

SECTION A-A



UNLESS OTHERWISE SPECIFIED:
DIMENSIONS ARE IN: INCHES [mm]
TOLERANCES: ANGULAR: \pm °
TWO PLACE DECIMAL: \pm -.
THREE PLACE DECIMAL: \pm -.
PRINTED GRAPHICS: \pm -.
PROPRIETARY AND CONFIDENTIAL
THE INFORMATION CONTAINED IN THIS
DRAWING IS THE SOLE PROPERTY OF
POLYCASE. ANY REPRODUCTION IN PART
OR AS A WHOLE WITHOUT THE WRITTEN
PERMISSION OF POLYCASE IS PROHIBITED.
CAD FILE: AL-76

PART NO.
AL-76P-01

MATERIAL

FLAME RATING

SIZE
B

DRAWN
CHECKED

NAME
C.C.B.

DATE
12/21/2017

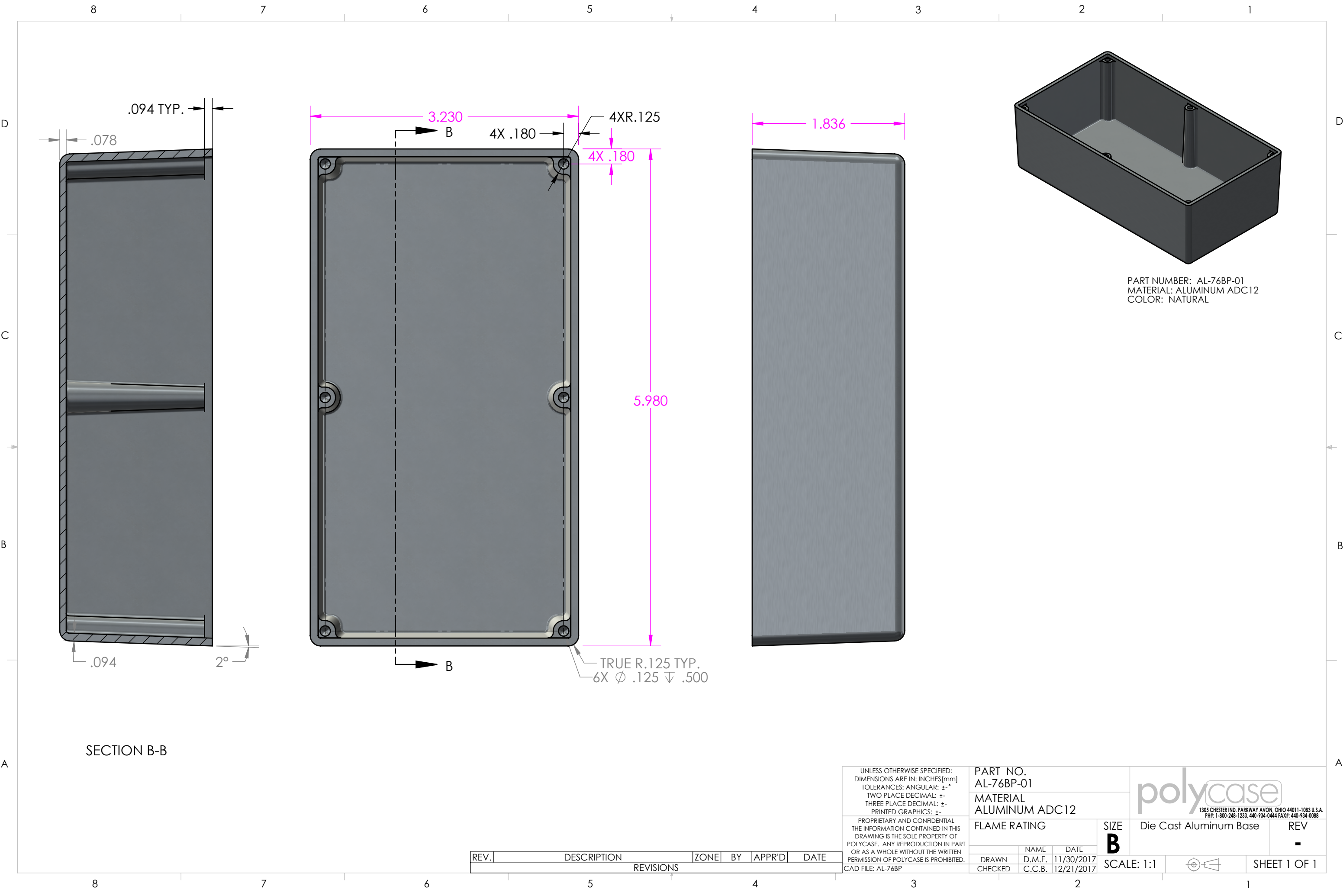
1305 CHESTER IND. PARKWAY AVON, OHIO 44011-1083 U.S.A.
PH#: 1-800-248-1233, 440-934-0444 FAX#: 440-934-0088

Die Cast Aluminum
Enclosure



REV
-

SCALE: 1:1

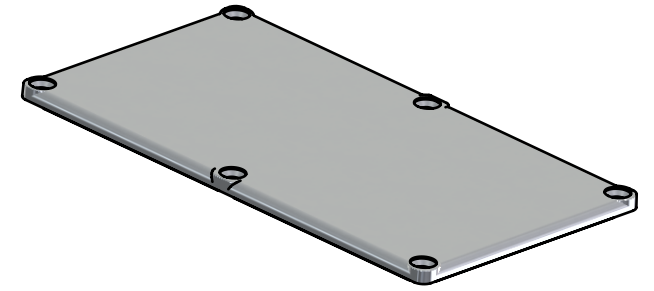
SHEET 1 OF 1



PART NUMBER: AL-76BP-01
MATERIAL: ALUMINUM ADC12
COLOR: NATURAL

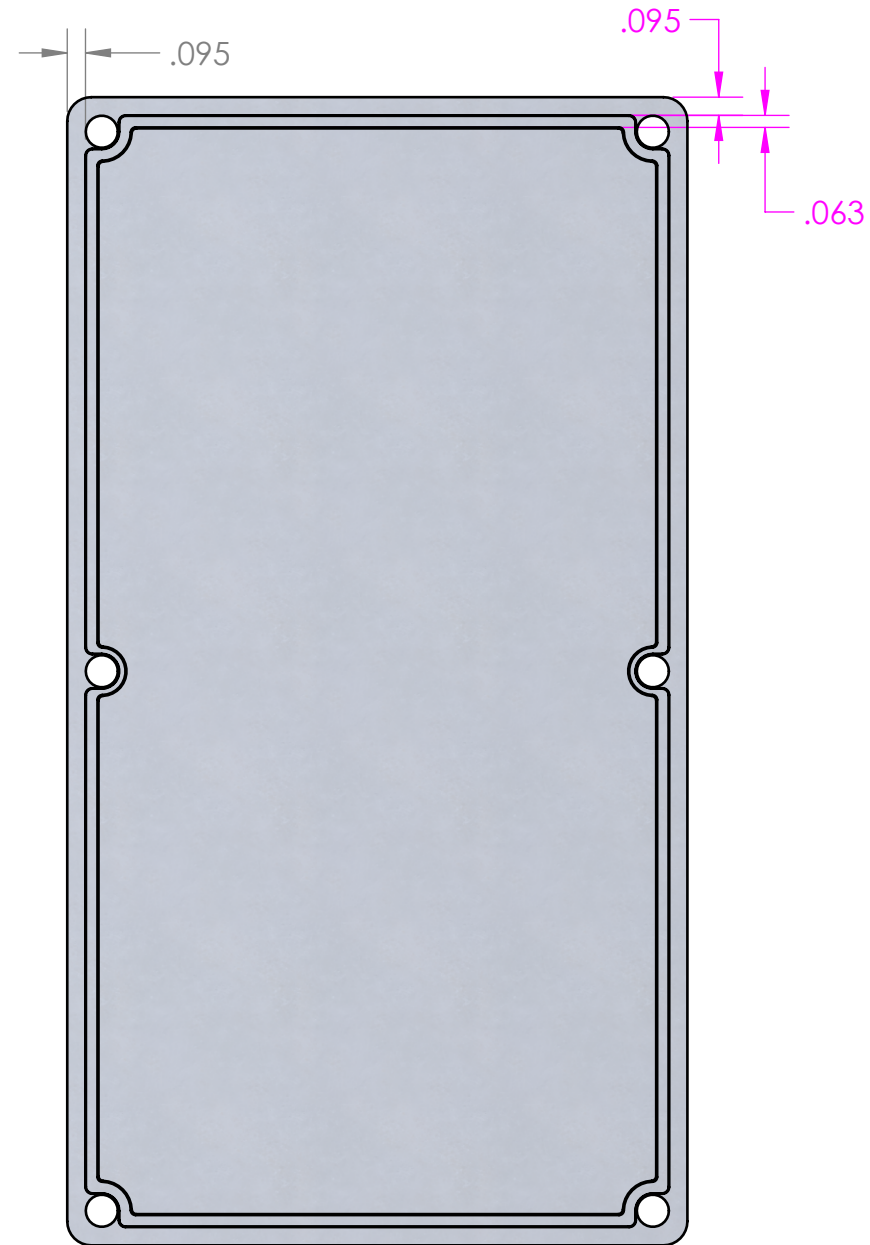
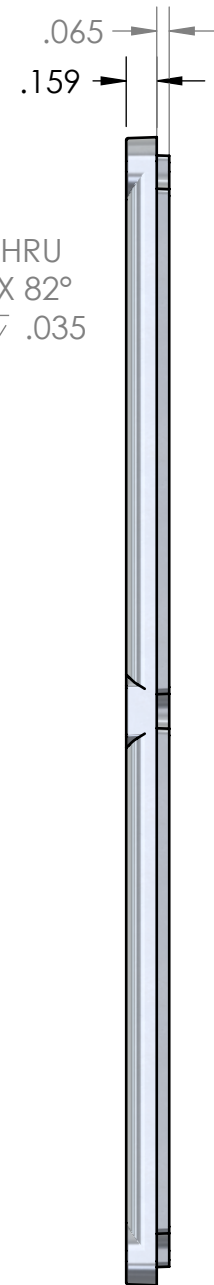
UNLESS OTHERWISE SPECIFIED: DIMENSIONS ARE IN: INCHES [mm] TOLERANCES: ANGULAR: ±° TWO PLACE DECIMAL: ± THREE PLACE DECIMAL: ± PRINTED GRAPHICS: ±		PART NO. AL-76BP-01		<div></div> <div>1305 CHESTER IND. PARKWAY AVON, OHIO 44011-1083 U.S.A. PH#: 1-800-248-1233, 440-934-0444 FAX#: 440-934-0088</div>				
		MATERIAL ALUMINUM ADC12						
		PROPRIETARY AND CONFIDENTIAL THE INFORMATION CONTAINED IN THIS DRAWING IS THE SOLE PROPERTY OF POLYCASE. ANY REPRODUCTION IN PART OR AS A WHOLE WITHOUT THE WRITTEN PERMISSION OF POLYCASE IS PROHIBITED. CAD FILE: AL-76BP		FLAME RATING		SIZE B	Die Cast Aluminum Base	
	NAME			DATE				
DRAWN	D.M.F.			11/30/2017				
CHECKED	C.C.B.			12/21/2017				
				SCALE: 1:1				SHEET 1 OF 1

REV.	DESCRIPTION	ZONE	BY	APPR'D	DATE
REVISIONS					



Technical drawing of a rectangular plate with the following specifications:

- Overall width: 3.230
- Overall height: 5.980
- Top edge thickness: .159
- 6X $\phi .167$ THRU
- $\phi .279 \times 82^\circ$
- $\phi .279 \nabla .035$
- 4X R.125
- Feature A is indicated by a dashed line and an arrow pointing to the bottom edge.



REV.	DESCRIPTION	ZONE	BY	APPR'D	DATE
REVISIONS					

UNLESS OTHERWISE SPECIFIED:
DIMENSIONS ARE IN: INCHES[mm]
TOLERANCES: ANGULAR: \pm°
TWO PLACE DECIMAL: \pm -
THREE PLACE DECIMAL: \pm -
PRINTED GRAPHICS: \pm -

PRINTED GRAPHICS: 2
 PROPRIETARY AND CONFIDENTIAL
 THE INFORMATION CONTAINED IN THIS
 DRAWING IS THE SOLE PROPERTY OF
 POLYCASE. ANY REPRODUCTION IN PART
 OR AS A WHOLE WITHOUT THE WRITTEN
 PERMISSION OF POLYCASE IS PROHIBITED.
 CAD FILE: AL-76C

PART NO.	AL-76C-01
MATERIAL	ALUMINUM ADC12

FLAME RATING
-

		NAME	DATE
	DRAWN	D.M.F.	11/30/2017
	CHECKED	C.C.B.	12/21/2017

SIZE
B

SCALE: 1:1

polycase

1305 CHESTER IND. PARKWAY AVON, OHIO 44010
PH: 1-800-248-1233, 440-934-0444 FAX:

Die Cast Aluminum Cover	
-------------------------	--

REV

SHEET 1 OF 1