

BOM Table					
ITEM NO.	PART NUMBER	Rev.	Description	Material	QTY.
1	WH-14P	-	MOUNTING PANEL	AL 5052-H32	1
2	SCREWS-007	-	M4X0.7 X 8mm, PAN HEAD, POZI, TRILOBULAR DIN 7500C SCREW	STEEL	4

SCALE 1 : 1.5

UNLESS OTHERWISE SPECIFIED:
DIMENSIONS ARE IN: INCHES [mm]
TOLERANCES: ANGULAR: ±2°
TWO PLACE DECIMAL: ±.010
THREE PLACE DECIMAL: ±.005
PRINTED GRAPHICS: ±.010

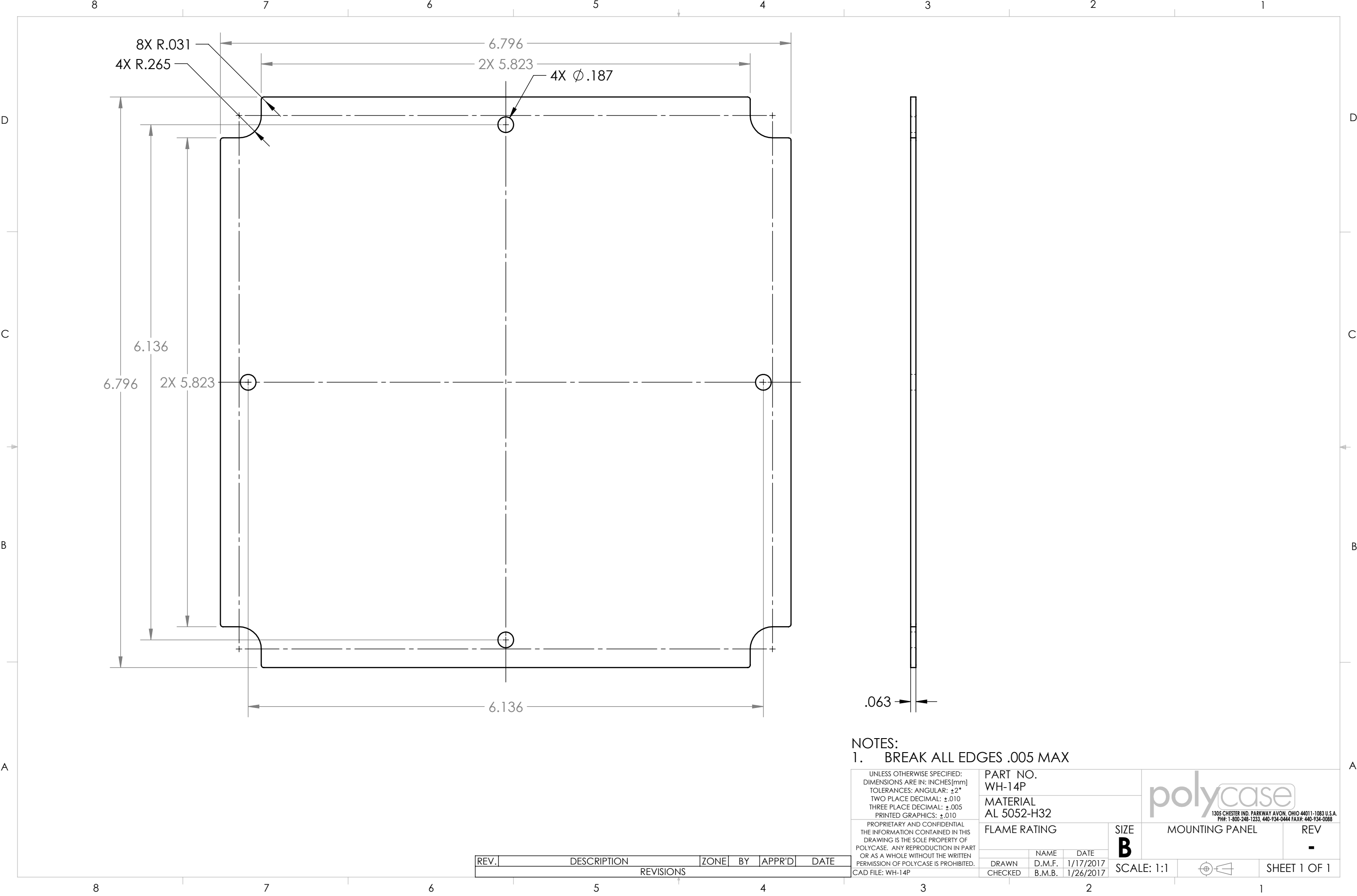
PROPRIETARY AND CONFIDENTIAL
THE INFORMATION CONTAINED IN THIS
DRAWING IS THE SOLE PROPERTY OF
POLYCASE. ANY REPRODUCTION IN PART
OR AS A WHOLE WITHOUT THE WRITTEN
PERMISSION OF POLYCASE IS PROHIBITED.
CAD FILE: WH-14K

PART NO. WH-14K		
MATERIAL		
FLAME RATING		SIZE B
DRAWN	NAME D.M.F.	DATE 1/16/2017
CHECKED	-	1/26/2017



1305 CHESTER IND. PARKWAY AVON, OHIO 44011-1083 U.S.A.
PH#: 1-800-248-1233, 440-934-0444 FAX#: 440-934-0088

MOUNTING PANEL KIT		REV -
SCALE: 1:1		SHEET 1 OF 1

REV.	DESCRIPTION	ZONE	BY	APPR'D	DATE
REVISIONS					



NOTES:
1. BREAK ALL EDGES .005 MAX

UNLESS OTHERWISE SPECIFIED: DIMENSIONS ARE IN: INCHES[mm] TOLERANCES: ANGULAR: $\pm 2^{\circ}$ TWO PLACE DECIMAL: $\pm .010$ THREE PLACE DECIMAL: $\pm .005$ PRINTED GRAPHICS: $\pm .010$				PART NO. WH-14P		<div></div> <div>1305 CHESTER IND. PARKWAY AVON, OHIO 44011-1083 U.S.A. PH#: 1-800-248-1233, 440-934-0444 FAX#: 440-934-0088</div>				
				MATERIAL AL 5052-H32						
PROPRIETARY AND CONFIDENTIAL THE INFORMATION CONTAINED IN THIS DRAWING IS THE SOLE PROPERTY OF POLYCASE. ANY REPRODUCTION IN PART OR AS A WHOLE WITHOUT THE WRITTEN PERMISSION OF POLYCASE IS PROHIBITED. CAD FILE: WH-14P				FLAME RATING		SIZE B	MOUNTING PANEL		REV -	
					NAME	DATE				
				DRAWN	D.M.F.	1/17/2017	SCALE: 1:1			SHEET 1 OF 1
				CHECKED	B.M.B.	1/26/2017				

REV.	DESCRIPTION	ZONE	BY	APPR'D	DATE
REVISIONS					